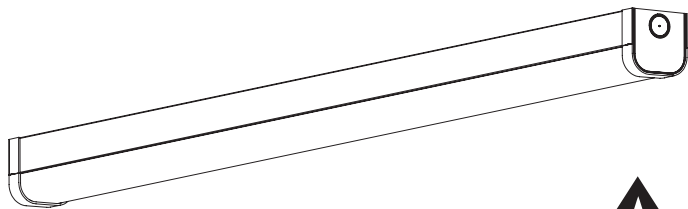


### BEACH LBE545, LBE445 - INTERIOR BATTEN



**IP20**

#### SPECIFICATIONS

Input Voltage	220 - 240V AC
Colour Temperature	Dual Colour - 4000K, 5700K
Wattage (Adjustable)	LBE545: 25 to 50W LBE445: 20 to 40W
IP Rating	IP20
IK Rating	IK06
LED Lifetime Hours	60,000
Material	Steel - Powdercoated and PC

#### LBE545 DIMENSIONS

Length	1500mm
Width	65mm
Depth	66mm

#### LBE445 DIMENSIONS

Length	1200mm
Width	65mm
Depth	66mm

#### SAFETY

Turn off power before installation or before doing any maintenance work. Turn off power before setting or changing CCT colour mode switch. Do not install any luminaire near a heat source.

For indoor use only. Do not install this luminaire in damp or wet locations.

Do not exceed the rated input voltage.

Take care not to pull any electrical wires during unpacking as this may damage the connection.

Lay out all the components on a smooth surface and make sure there are no components missing before assembling.

To avoid injury or damage to the fitting, please ensure that power leads and screws are secure before connecting the power.

This product should be installed by a suitably qualified person in accordance with Australian and New Zealand wiring rules.

#### WARRANTY

This product is covered by the standard Vynco Warranty - proof of purchase is required. Please contact Vynco for details of returns procedure.

**NOTE:** This product contains NO user serviceable parts.

#### VYNCO INDUSTRIES (NZ) LIMITED

##### CHRISTCHURCH

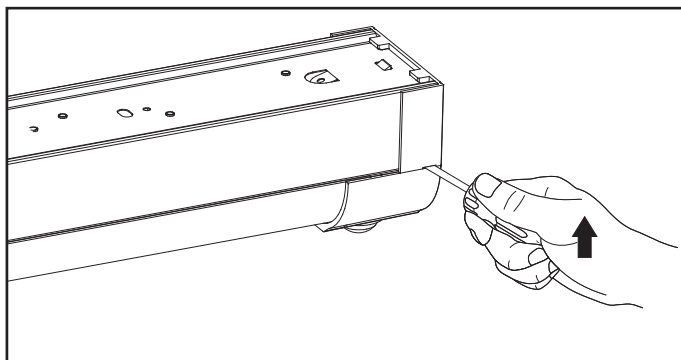
388 Tuam Street, Phillipstown, Christchurch, 8011  
PO Box 9022, Tower Junction, Christchurch 8149  
New Zealand  
P +64 3 379 9283  
E sales@vynco.co.nz

**VYNCO.CO.NZ**

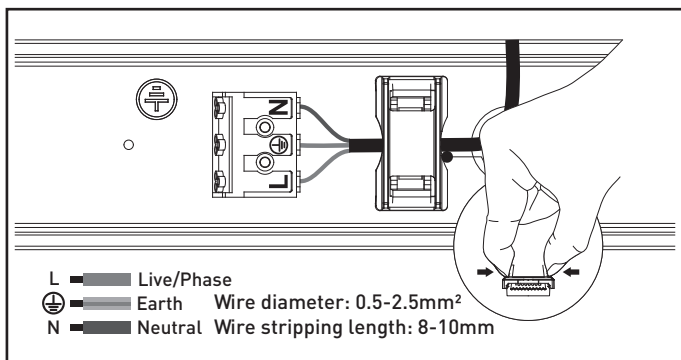
##### AUCKLAND

9 Levene Place, Mount Wellington  
PO Box 12 249, Penrose, Auckland 1061  
New Zealand  
P +64 9 525 6051

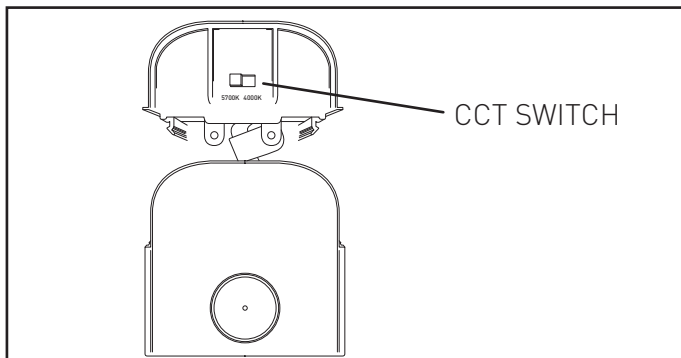
### BEACH LBE545, LBE445 - INTERIOR BATTEN



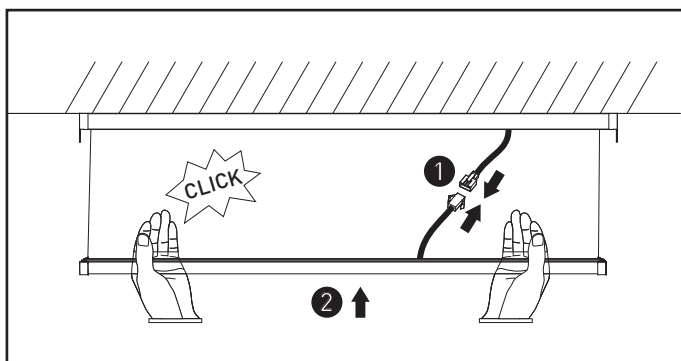
#### STEP 1



#### STEP 2



#### STEP 3



#### STEP 4

### INSTALLATION PROCEDURE

Switch off before installation. Switch on only after complete installation and examination of the circuit. Installation and maintenance should only be completed by a registered electrician.

#### STEP 1

Press the snap-on button at both ends and remove the cover.

#### STEP 2

Knock plastic anchor into ceiling. Connect the cable to terminal block. Fix the base to the ceiling or suspend.

#### STEP 3

Set the Colour - use the Switch on the end of the fitting  
Set the wattage using the DIP Switches on the Driver.

#### DRIVER WATTAGE SETTINGS

BEACH LBE545	1	2
25W	OFF	OFF
35W	ON	OFF
40W	OFF	ON
50W	ON	ON

#### DRIVER WATTAGE SETTINGS

BEACH LBE445	1	2
20W	OFF	OFF
25W	ON	OFF
35W	OFF	ON
40W	ON	ON

#### STEP 4

Connect the DC plug. Press the snap-on button and fix the cover to the base.

#### STEP 5

Installation complete.