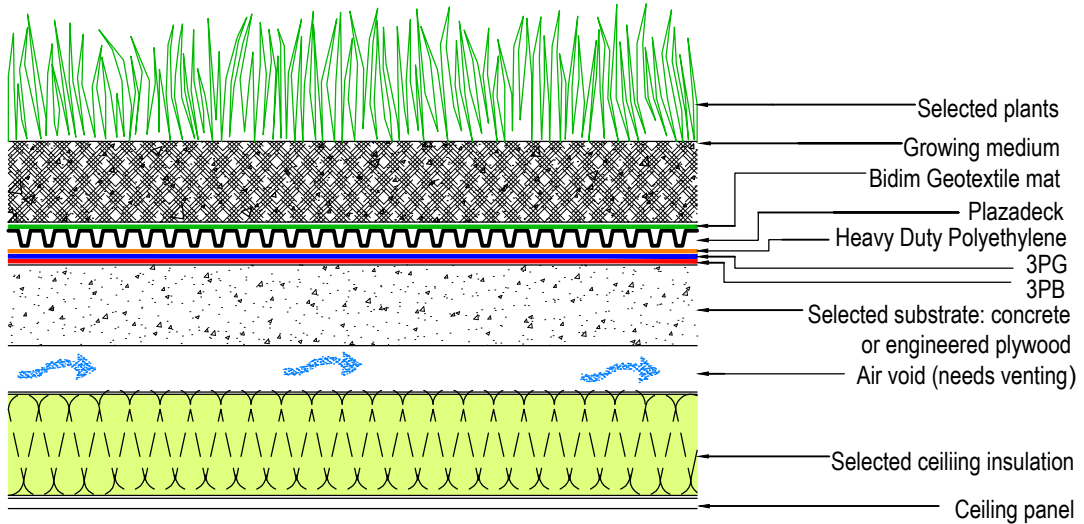
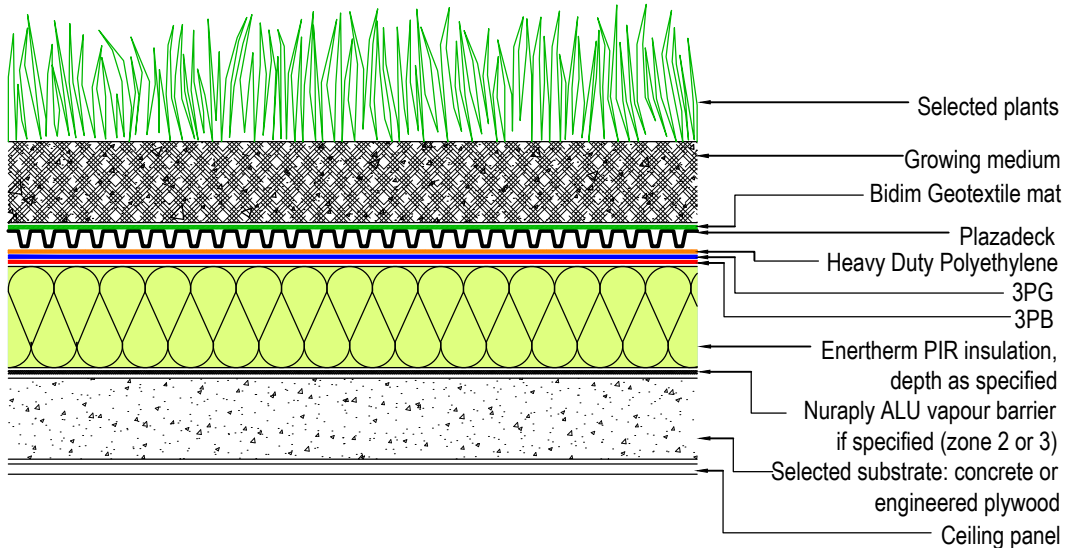


THIS DRAWING IS INDICATIVE ONLY AND BY NO MEANS COMPREHENSIVE

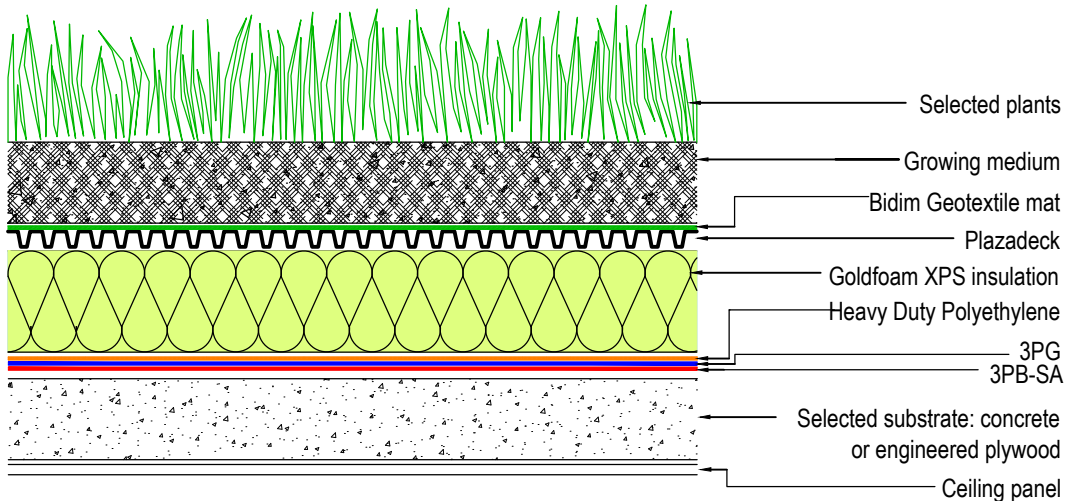
### COLD ROOF SYSTEM



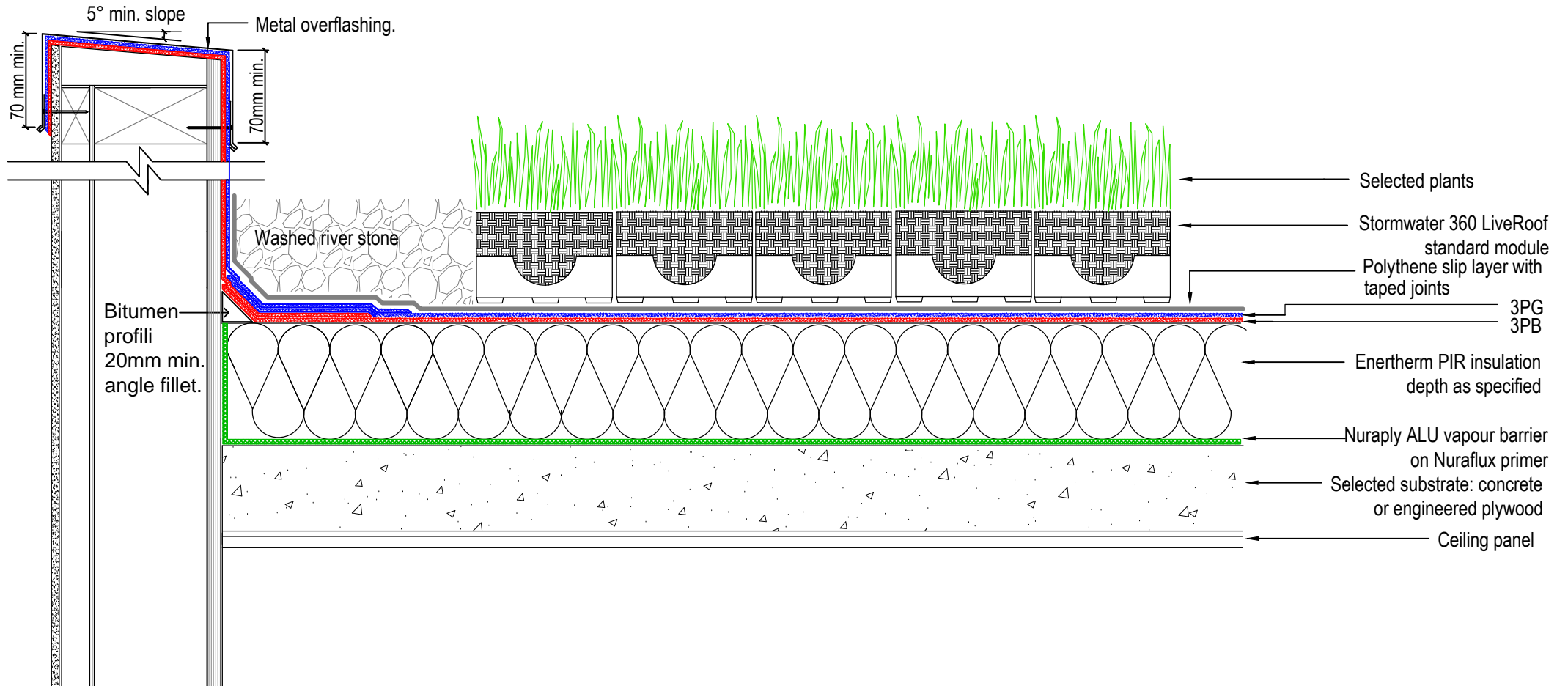
### WARM ROOF SYSTEM



### PROTECTED MEMBRANE ROOF SYSTEM



**THIS DRAWING IS INDICATIVE ONLY AND BY NO MEANS COMPREHENSIVE**



**Nuralite Waterproofing Ltd.**

53A Victoria Street, Onehunga,  
Auckland 1061, New Zealand  
TEL: (64) (9) 579-2046  
FAX: (64) (9) 579-5136  
email: info@nuralite.co.nz  
web: www.nuralite.co.nz

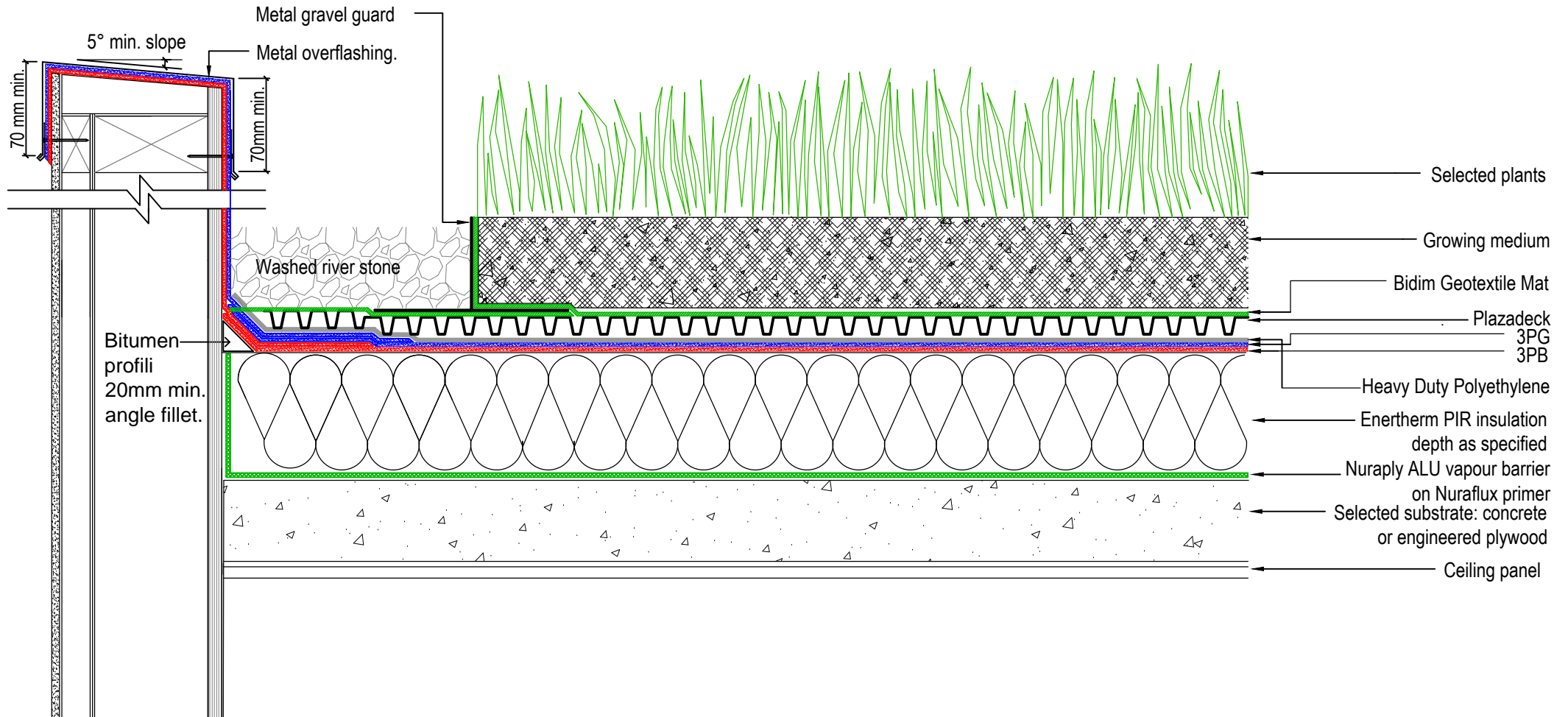
*All applications to be installed by an authorised nuralite applicator. All materials to be applied in accordance with standard published installation instruction and product data sheet should be consulted at all times. This drawing is for comment & approval it must not be used for construction until authorised by the site specifier or other relevant technical expert. This detail drawing is to be used only as a part of the nuralite specification package.*

*All drawings are subject to copyright. Unauthorised use is prohibited*

© NURALITE WATERPROOFING Ltd.

PRODUCT:		<b>GREEN ROOF</b>	
DESCRIPTION:		PROTECTED MEMBRANE ROOF SYSTEM - UPSTAND	
SCALE:	NTS	PREVIOUS DWG No:	New
REVISION:	Rev E	DATE:	NOV 12
		DWG No:	<b>GCP-.C1</b>

**THIS DRAWING IS INDICATIVE ONLY AND BY NO MEANS COMPREHENSIVE**



**Nuralite Waterproofing Ltd.**

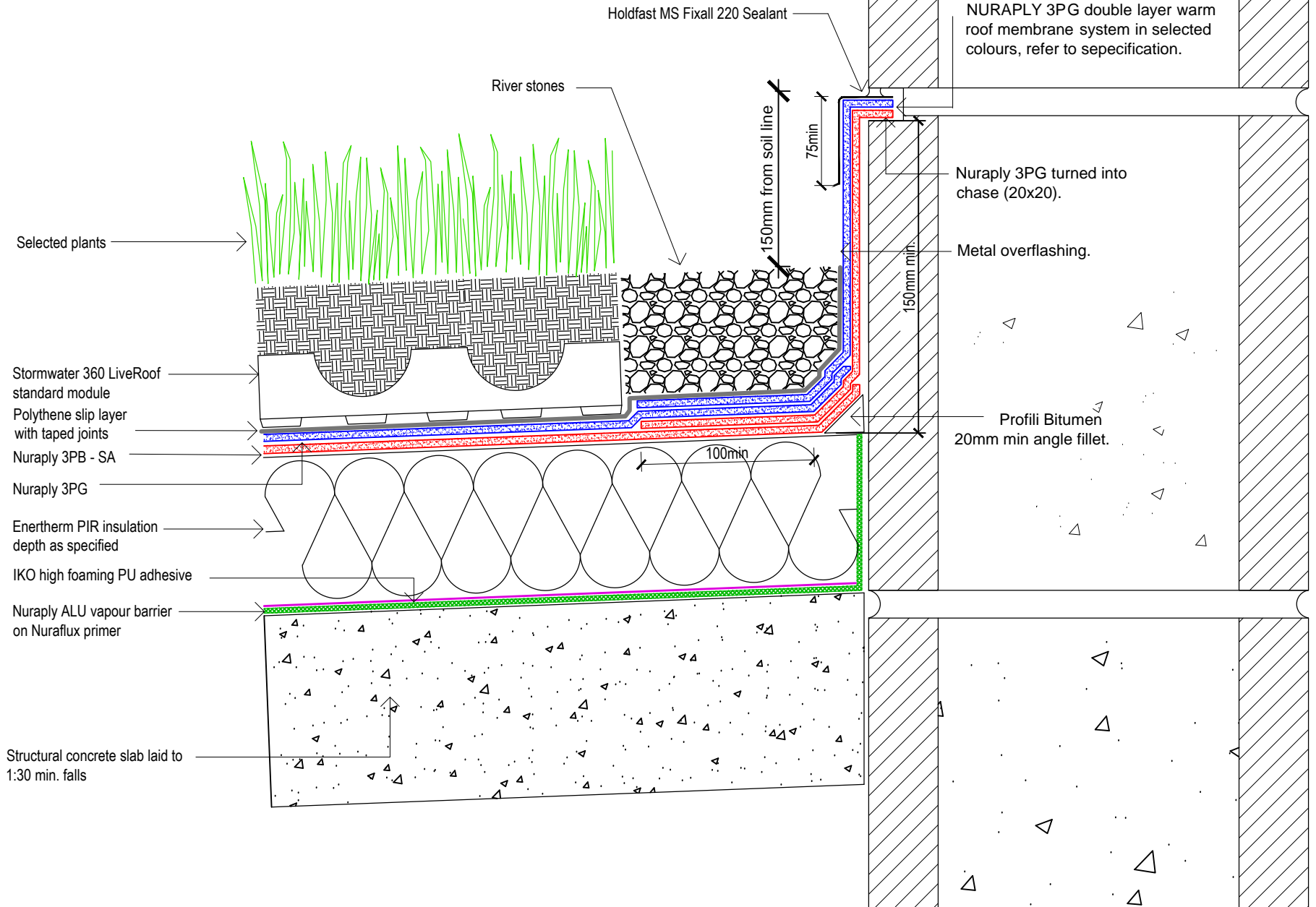
53A Victoria Street, Onehunga,  
Auckland 1061, New Zealand  
TEL: (64) (9) 579-2046  
FAX: (64) (9) 579-5136  
email: info@nuralite.co.nz  
web: www.nuralite.co.nz

*All applications to be installed by an authorised nuralite applicator. All materials to be applied in accordance with standard published installation instruction and product data sheet should be consulted at all times. This drawing is for comment & approval it must not be used for construction until authorised by the site specifier or other relevant technical expert. This detail drawing is to be used only as a part of the nuralite specification package.*

*All drawings are subject to copyright. Unauthorised use is prohibited*  
© NURALITE WATERPROOFING Ltd.

PRODUCT:		<b>GREEN ROOF</b>	
DESCRIPTION:		PROTECTED MEMBRANE ROOF SYSTEM - UPSTAND	
SCALE:	NTS	PREVIOUS DWG No:	New
REVISION:	Rev E	DATE:	NOV 12
		DWG No:	<b>GCP-C2</b>

**THIS DRAWING IS INDICATIVE ONLY AND BY NO MEANS COMPREHENSIVE**

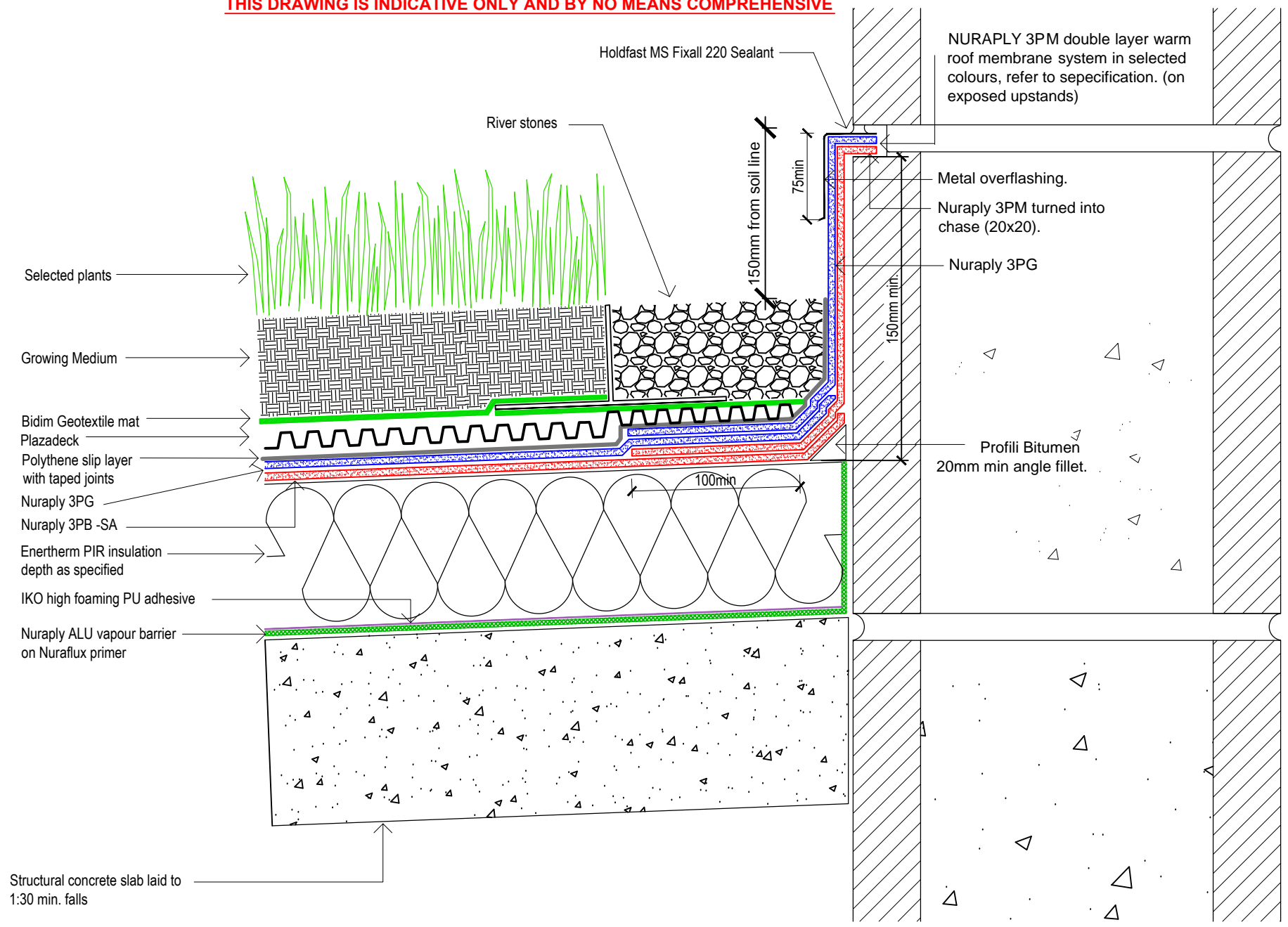


**Nuralite Waterproofing Ltd.**  
 53A Victoria Street, Onehunga,  
 Auckland 1061, New Zealand  
 TEL: (64) (9) 579-2046  
 FAX: (64) (9) 579-5136  
 email: info@nuralite.co.nz  
 web: www.nuralite.co.nz

*All applications to be installed by an authorised nuralite applicator. All materials to be applied in accordance with standard published installation instruction and product data sheet should be consulted at all times. This drawing is for comment & approval it must not be used for construction until authorised by the site specifier or other relevant technical expert. This detail drawing is to be used only as a part of the nuralite specification package.*  
 All drawings are subject to copyright. Unauthorised use is prohibited  
 © NURALITE WATERPROOFING Ltd.

PRODUCT: <b>NURATHERM ON CONCRETE &amp; STORMWATER 360</b>			
DESCRIPTION: <b>WARM/GREEN ROOF - NURAPLY 3P UPSTAND TERMINATION DETAIL</b>			
SCALE: NTS	PREVIOUS DWG No: New	DWG No: <b>GCP.D1</b>	
REVISION: Rev D	DATE: APR 14		

**THIS DRAWING IS INDICATIVE ONLY AND BY NO MEANS COMPREHENSIVE**

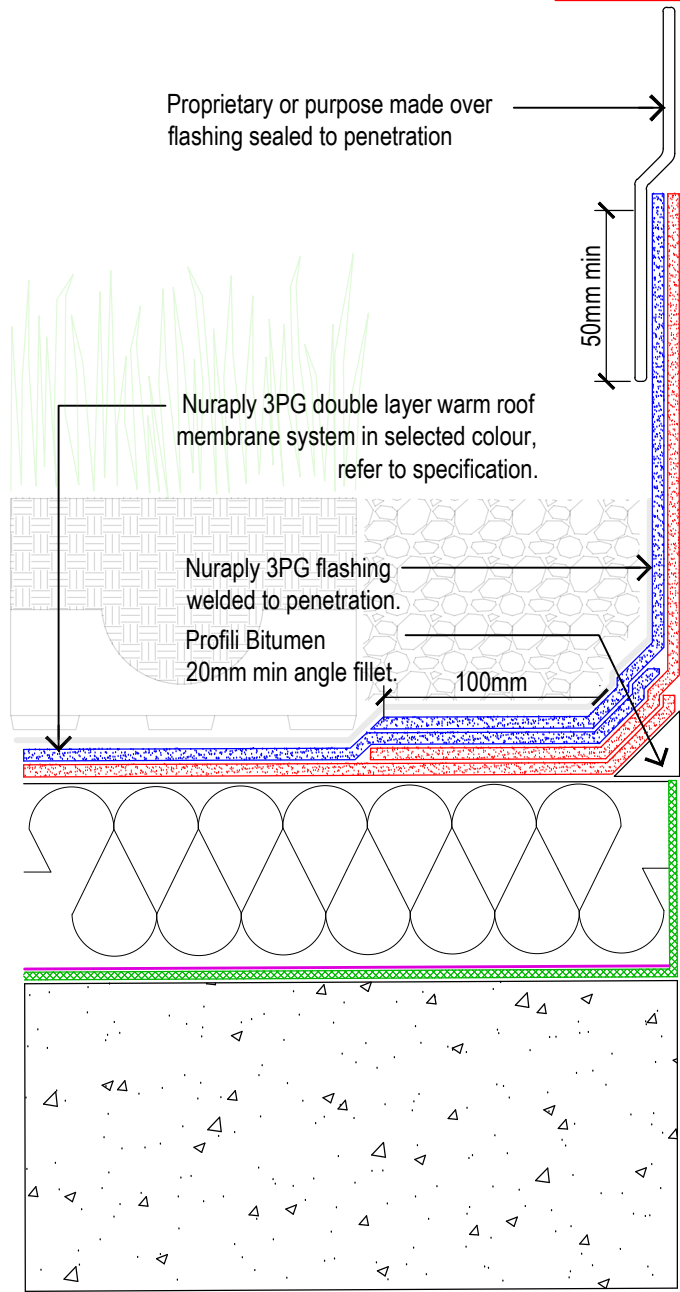


**Nuralite Waterproofing Ltd.**  
 53A Victoria Street, Onehunga,  
 Auckland 1061, New Zealand  
 TEL: (64) (9) 579-2046  
 FAX: (64) (9) 579-5136  
 email: info@nuralite.co.nz  
 web: www.nuralite.co.nz

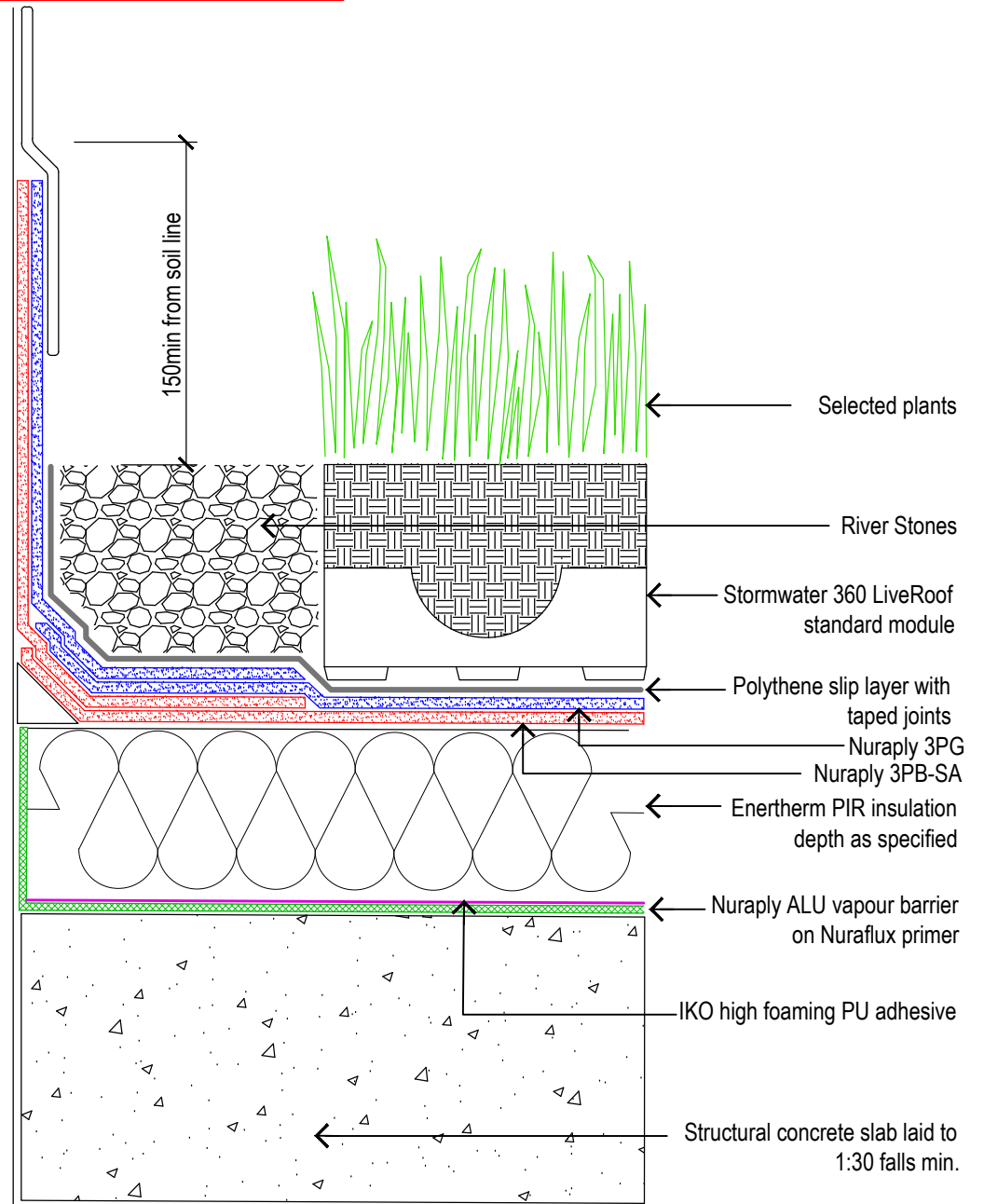
*All applications to be installed by an authorised nuralite applicator. All materials to be applied in accordance with standard published installation instruction and product data sheet should be consulted at all times. This drawing is for comment & approval it must not be used for construction until authorised by the site specifier or other relevant technical expert. This detail drawing is to be used only as a part of the nuralite specification package.*  
 All drawings are subject to copyright. Unauthorised use is prohibited  
 © NURALITE WATERPROOFING Ltd.

PRODUCT: <b>NURAPLY 3PG ON CONCRETE</b>		
DESCRIPTION: <b>WARM/GREEN ROOF - NURAPLY 3PG UPSTAND TERMINATION DETAIL</b>		
SCALE: <b>NTS</b>	PREVIOUS DWG No: <b>New</b>	DWG No: <b>GCP.D2</b>
REVISION: <b>Rev D</b>	DATE: <b>APR 14</b>	

**THIS DRAWING IS INDICATIVE ONLY AND BY NO MEANS COMPREHENSIVE**



Roof Penetration



**Nuralite Waterproofing Ltd.**

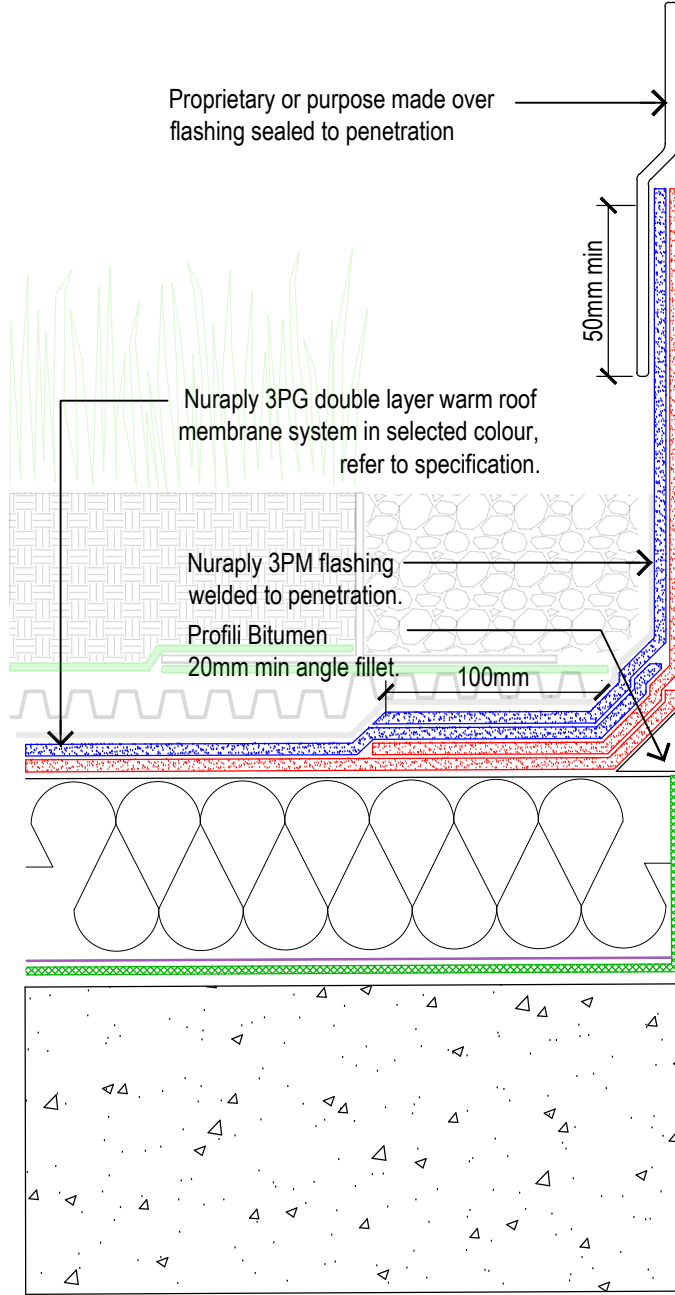
53A Victoria Street, Onehunga,  
Auckland 1061, New Zealand  
TEL: (64) (9) 579-2046  
FAX: (64) (9) 579-5136  
email: info@nuralite.co.nz  
web: www.nuralite.co.nz

*All applications to be installed by an authorised nuralite applicator. All materials to be applied in accordance with standard published installation instruction and product data sheet should be consulted at all times. This drawing is for comment & approval it must not be used for construction until authorised by the site specifier or other relevant technical expert. This detail drawing is to be used only as a part of the nuralite specification package.*

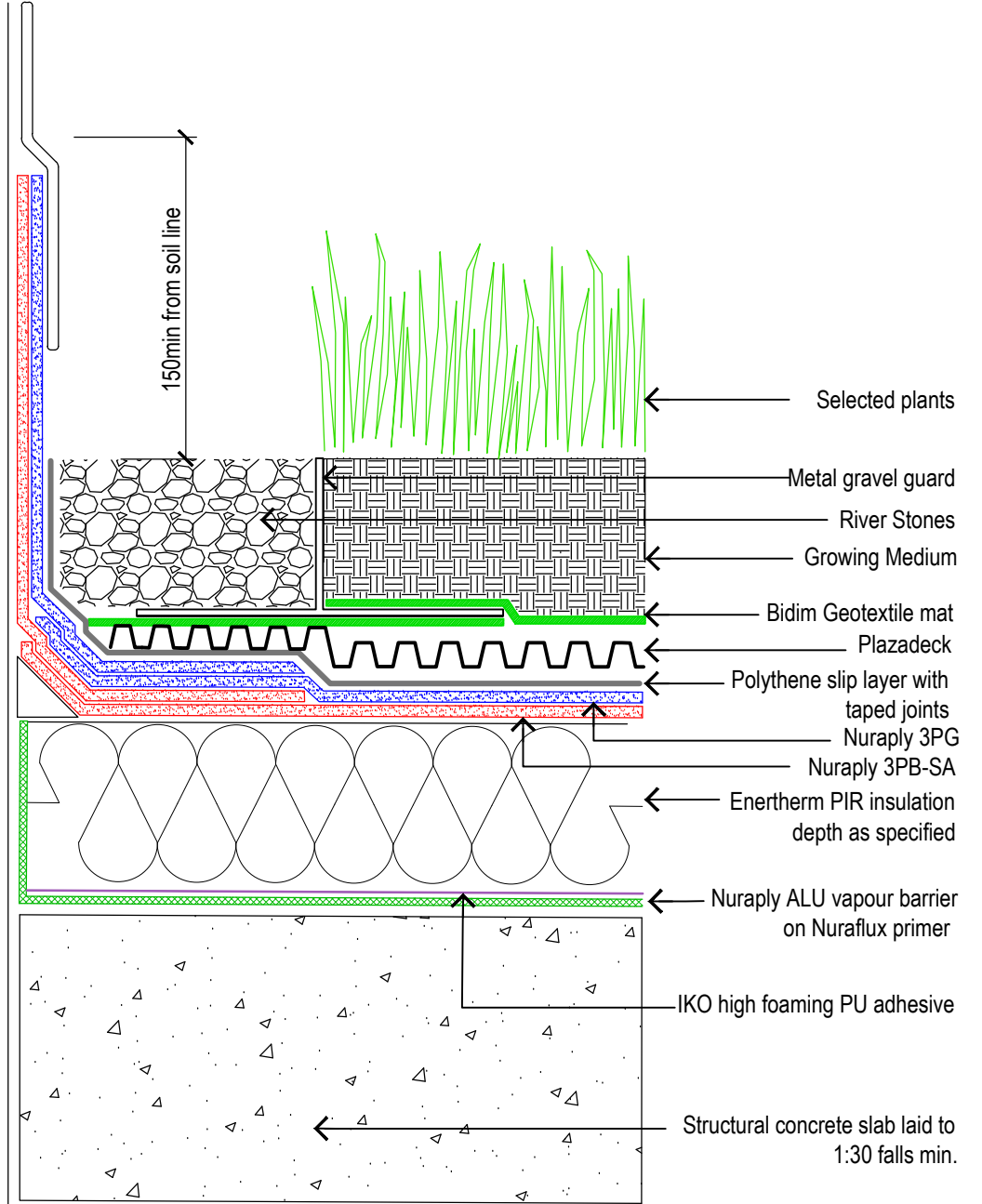
*All drawings are subject to copyright. Unauthorised use is prohibited*  
© NURALITE WATERPROOFING Ltd.

PRODUCT: <b>NURATHERM ON CONCRETE &amp; STORMWATER 360</b>		
DESCRIPTION: <b>WARM/GREEN ROOF - ROOF PENETRATION WITH INTEGRAL FLASHING</b>		
SCALE: <b>NTS</b>	PREVIOUS DWG No: <b>New</b>	DWG No: <b>GCP.E1</b>
REVISION: <b>Rev D</b>	DATE: <b>APR 14</b>	

**THIS DRAWING IS INDICATIVE ONLY AND BY NO MEANS COMPREHENSIVE**



Roof Penetration

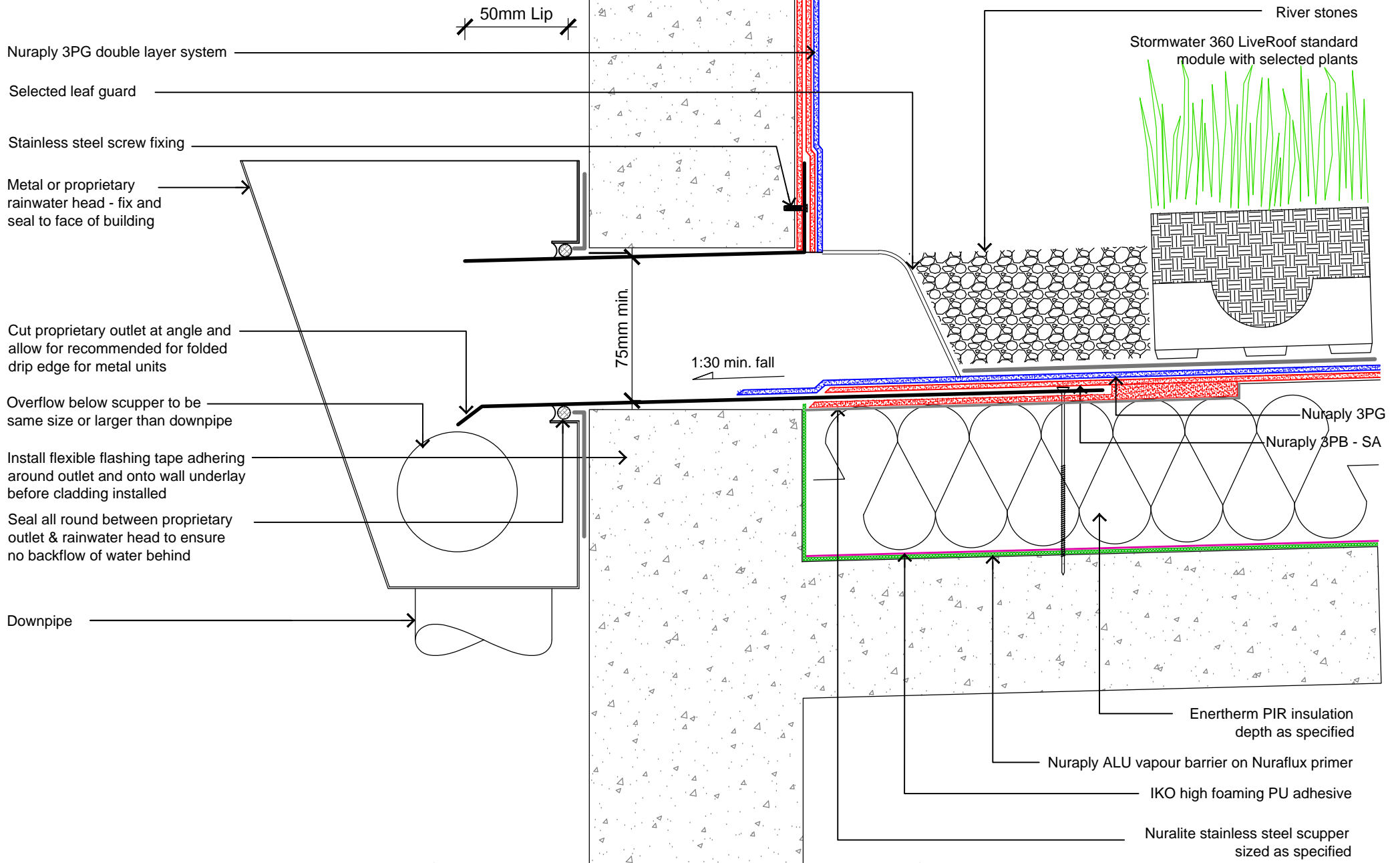


**Nuralite Waterproofing Ltd.**  
 53A Victoria Street, Onehunga,  
 Auckland 1061, New Zealand  
 TEL: (64) (9) 579-2046  
 FAX: (64) (9) 579-5136  
 email: info@nuralite.co.nz  
 web: www.nuralite.co.nz

*All applications to be installed by an authorised nuralite applicator. All materials to be applied in accordance with standard published installation instruction and product data sheet should be consulted at all times. This drawing is for comment & approval it must not be used for construction until authorised by the site specifier or other relevant technical expert. This detail drawing is to be used only as a part of the nuralite specification package.*  
 All drawings are subject to copyright. Unauthorised use is prohibited  
 © NURALITE WATERPROOFING Ltd.

PRODUCT: <b>NURALITE 3PG ON CONCRETE</b>		
DESCRIPTION: <b>WARM/GREEN ROOF - ROOF PENETRATION WITH INTEGRAL FLASHING</b>		
SCALE: <b>NTS</b>	PREVIOUS DWG No: <b>New</b>	DWG No: <b>GCP.E2</b>
REVISION: <b>Rev D</b>	DATE: <b>APR 14</b>	

**THIS DRAWING IS INDICATIVE ONLY AND BY NO MEANS COMPREHENSIVE**



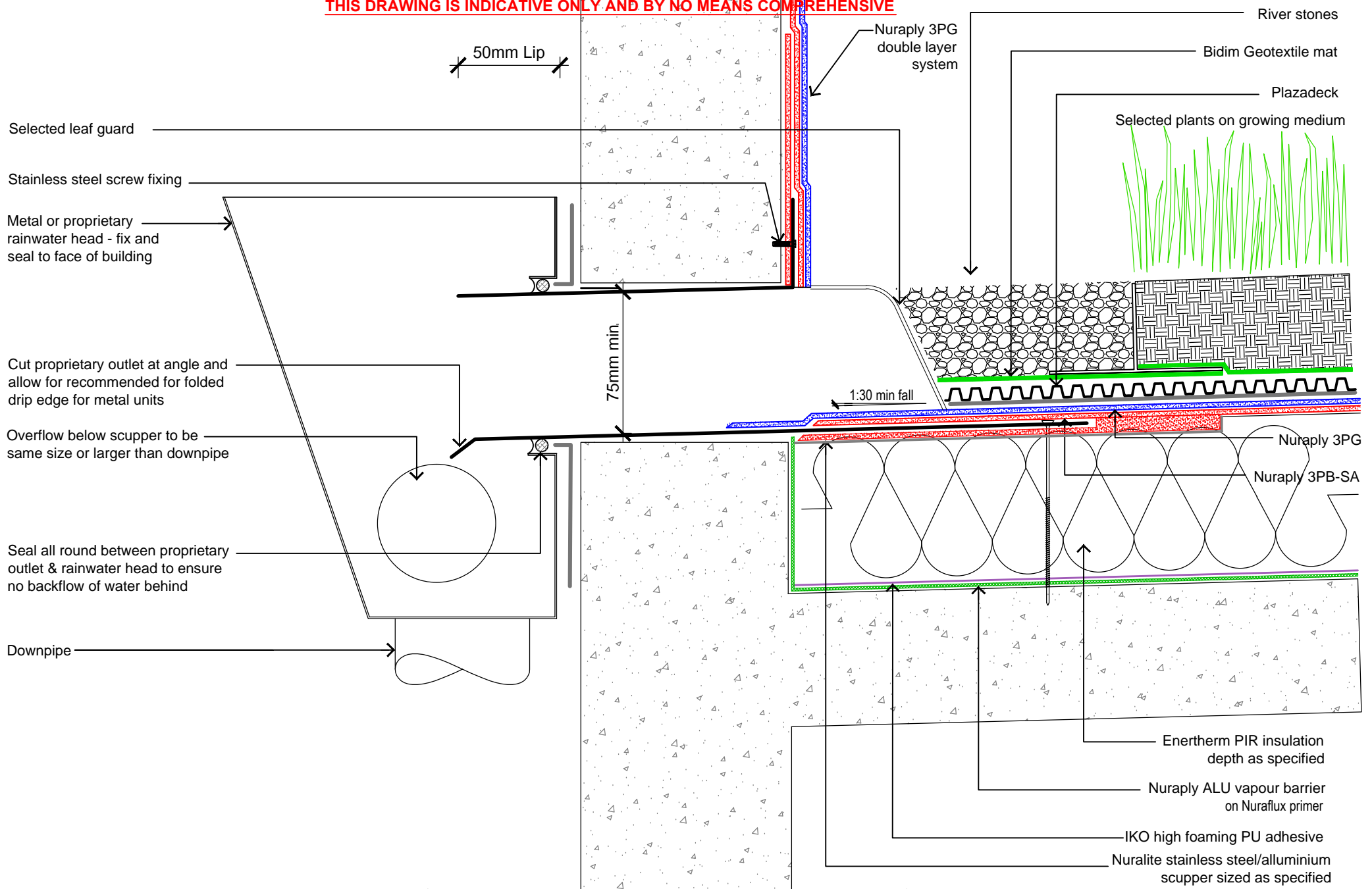
**Nuralite Waterproofing Ltd.**  
 53A Victoria Street, Onehunga,  
 Auckland 1061, New Zealand  
 TEL: (64) (9) 579-2046  
 FAX: (64) (9) 579-5136  
 email: info@nuralite.co.nz  
 web: www.nuralite.co.nz

*All applications to be installed by an authorised nuralite applicator. All materials to be applied in accordance with standard published installation instruction and product data sheet should be consulted at all times. This drawing is for comment & approval it must not be used for construction until authorised by the site specifier or other relevant technical expert. This detail drawing is to be used only as a part of the nuralite specification package.*  
 All drawings are subject to copyright. Unauthorised use is prohibited  
 © NURALITE WATERPROOFING Ltd.

PRODUCT:		<b>NURATHERM ON CONCRETE &amp; STORMWATER 360</b>	
DESCRIPTION:		<b>WARM/GREEN ROOF - SCUPPER DETAIL</b>	
SCALE:	NTS	PREVIOUS DWG No:	New
REVISION:	Rev D	DATE:	APR 14
		DWG No:	<b>STM.F1</b>



**THIS DRAWING IS INDICATIVE ONLY AND BY NO MEANS COMPREHENSIVE**



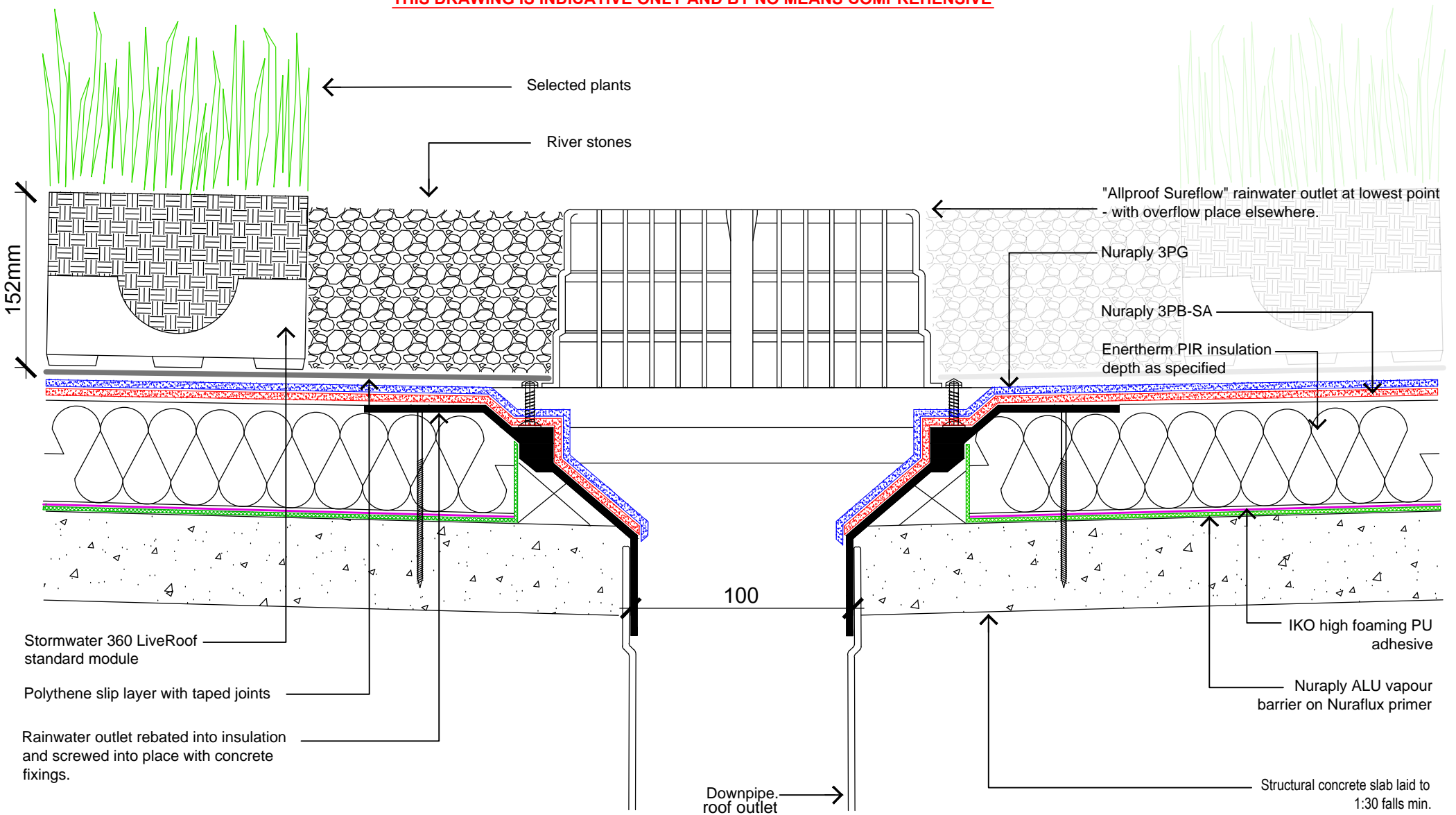
**Nuralite Waterproofing Ltd.**

53A Victoria Street, Onehunga,  
Auckland 1061, New Zealand  
TEL: (64) (9) 579-2046  
FAX: (64) (9) 579-5136  
email: info@nuralite.co.nz  
web: www.nuralite.co.nz

*All applications to be installed by an authorised nuralite applicator. All materials to be applied in accordance with standard published installation instruction and product data sheet should be consulted at all times. This drawing is for comment & approval it must not be used for construction until authorised by the site specifier or other relevant technical expert. This detail drawing is to be used only as a part of the nuralite specification package.*  
All drawings are subject to copyright. Unauthorised use is prohibited  
© NURALITE WATERPROOFING Ltd.

PRODUCT:			<b>NURAPLY 3PM ON CONCRETE</b>		
DESCRIPTION:			WARM/GREEN ROOF - SCUPPER DETAIL		
SCALE:	NTS	PREVIOUS DWG No:	New	DWG No:	<b>GCP.F2</b>
REVISION:	Rev D	DATE:	APR 14		

**THIS DRAWING IS INDICATIVE ONLY AND BY NO MEANS COMPREHENSIVE**

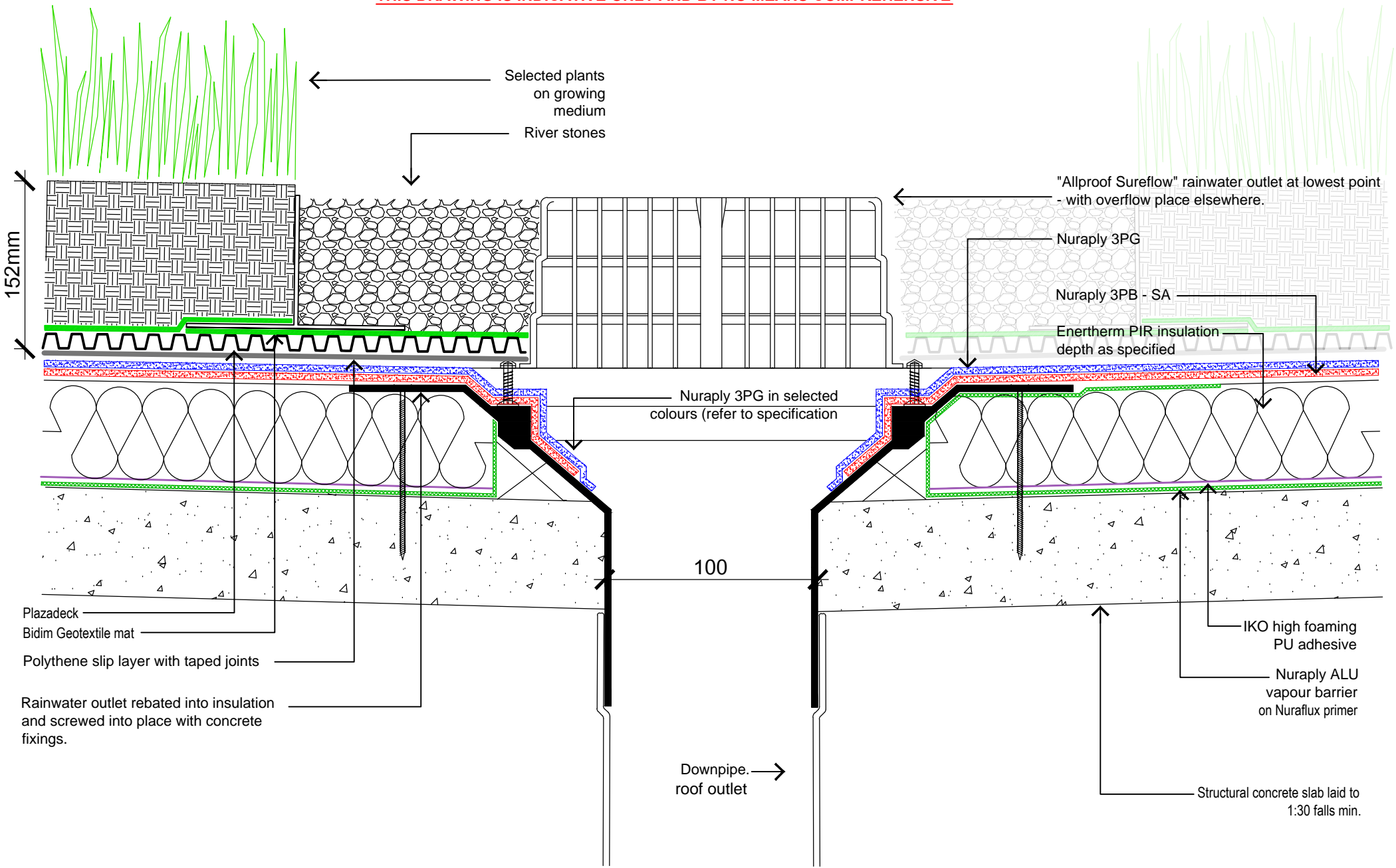


**Nuralite Waterproofing Ltd.**  
 53A Victoria Street, Onehunga,  
 Auckland 1061, New Zealand  
 TEL: (64) (9) 579-2046  
 FAX: (64) (9) 579-5136  
 email: info@nuralite.co.nz  
 web: www.nuralite.co.nz

*All applications to be installed by an authorised nuralite applicator. All materials to be applied in accordance with standard published installation instruction and product data sheet should be consulted at all times. This drawing is for comment & approval it must not be used for construction until authorised by the site specifier or other relevant technical expert. This detail drawing is to be used only as a part of the nuralite specification package.*  
 All drawings are subject to copyright. Unauthorised use is prohibited  
 © NURALITE WATERPROOFING Ltd.

PRODUCT: <b>NURATHERM ON CONCRETE &amp; STORMWATER 360</b>		
DESCRIPTION: <b>WARM/GREEN ROOF - LARGE ALLPROOF RAINWATER OUTLET</b>		
SCALE: NTS	PREVIOUS DWG No: New	DWG No: <b>GCP.G1</b>
REVISION: Rev D	DATE: APR 13	

**THIS DRAWING IS INDICATIVE ONLY AND BY NO MEANS COMPREHENSIVE**



**Nuralite Waterproofing Ltd.**

53A Victoria Street, Onehunga,  
Auckland 1061, New Zealand  
TEL: (64) (9) 579-2046  
FAX: (64) (9) 579-5136  
email: info@nuralite.co.nz  
web: www.nuralite.co.nz

All applications to be installed by an authorised nuralite applicator. All materials to be applied in accordance with standard published installation instruction and product data sheet should be consulted at all times. This drawing is for comment & approval it must not be used for construction until authorised by the site specifier or other relevant technical expert. This detail drawing is to be used only as a part of the nuralite specification package.  
All drawings are subject to copyright. Unauthorised use is prohibited  
© NURALITE WATERPROOFING Ltd.

PRODUCT:

**NURAPLY 3PM ON CONCRETE**

DESCRIPTION:

**WARM/GREEN ROOF - LARGE ALLPROOF RAINWATER OUTLET**

SCALE:

NTS

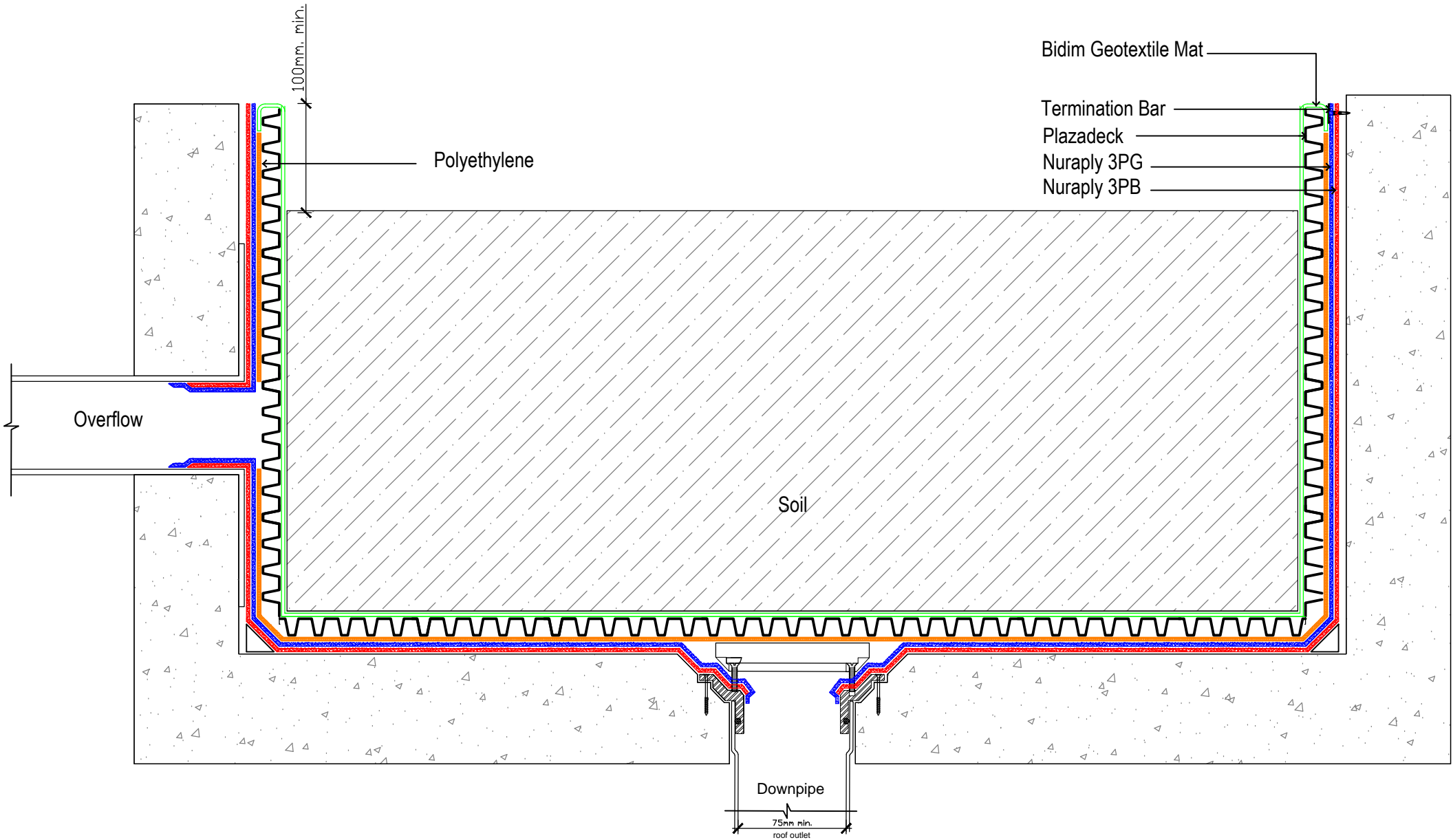
PREVIOUS DWG No: New

DWG No: **GWC.G1**

REVISION: Rev D

DATE: APR 13

**THIS DRAWING IS INDICATIVE ONLY AND BY NO MEANS COMPREHENSIVE**



**Nuralite Waterproofing Ltd.**

53A Victoria Street, Onehunga,  
Auckland 1061, New Zealand  
TEL: (64) (9) 579-2046  
FAX: (64) (9) 579-5136  
email: info@nuralite.co.nz  
web: www.nuralite.co.nz

*All applications to be installed by an authorised nuralite applicator. All materials to be applied in accordance with standard published installation instruction and product data sheet should be consulted at all times. This drawing is for comment & approval it must not be used for construction until authorised by the site specifier or other relevant technical expert. This detail drawing is to be used only as a part of the nuralite specification package.*  
All drawings are subject to copyright. Unauthorised use is prohibited  
© NURALITE WATERPROOFING Ltd.

PRODUCT:		<b>GREEN ROOF</b>	
DESCRIPTION:		PLANTER DETAIL	
SCALE:	NTS	PREVIOUS DWG No:	New
REVISION:	Rev A	DATE:	NOV 12
			DWG No: <b>GCP-H1</b>