

**THIS DRAWING IS INDICATIVE ONLY AND BY NO MEANS COMPREHENSIVE**

**NOTES:-**

All sharp edges/corners to be arrised

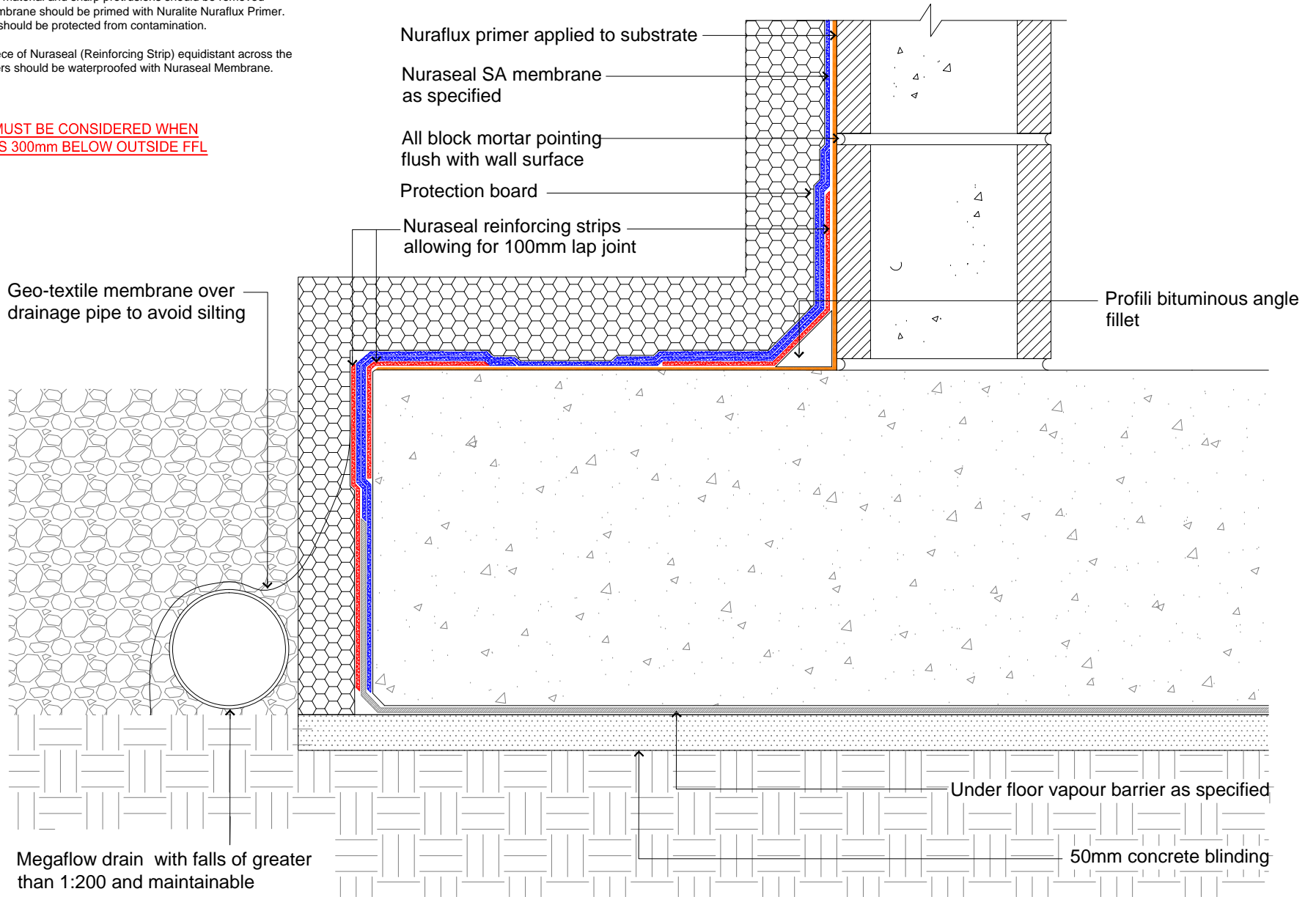
**Preparations**

All surfaces must be smooth, clean and dry. Loose material and sharp protrusions should be removed mechanically. All areas receiving torch applied membrane should be primed with Nuralite Nuraflex Primer. Allow to dry completely. The newly applied primer should be protected from contamination.

**Angles and Corners**

These should be reinforced with a 330mm wide piece of Nuraseal (Reinforcing Strip) equidistant across the previously primed area. Internal and external corners should be waterproofed with Nuraseal Membrane.

**TANKING UNDER THE SLAB MUST BE CONSIDERED WHEN SLAB FFL (finished floor level) IS 300mm BELOW OUTSIDE FFL**



**Nuralite Waterproofing Ltd.**  
 53A Victoria Street, Onehunga,  
 Auckland 1061, New Zealand  
 TEL: (64) (9) 579-2046  
 FAX: (64) (9) 579-5136  
 email: info@nuralite.co.nz  
 web: www.nuralite.co.nz

*All applications to be installed by an authorised nuralite applicator. All materials to be applied in accordance with standard published installation instruction and product data sheet should be consulted at all times. This drawing is for comment & approval it must not be used for construction until authorised by the site specifier or other relevant technical expert. This detail drawing is to be used only as a part of the nuralite specification package.*  
 All drawings are subject to copyright. Unauthorised use is prohibited  
 © NURALITE WATERPROOFING Ltd.

PRODUCT:	<b>NURASEAL</b>		
DESCRIPTION:	TANKING AROUND TOE DETAIL		
SCALE:	NTS	PREVIOUS DWG No:	New
REVISION:	Rev F	DATE:	APR14
		DWG No:	<b>TCS-.A1</b>

**THIS DRAWING IS INDICATIVE ONLY AND BY NO MEANS COMPREHENSIVE**

**NOTES:-**

All sharp edges/corners to be arrised

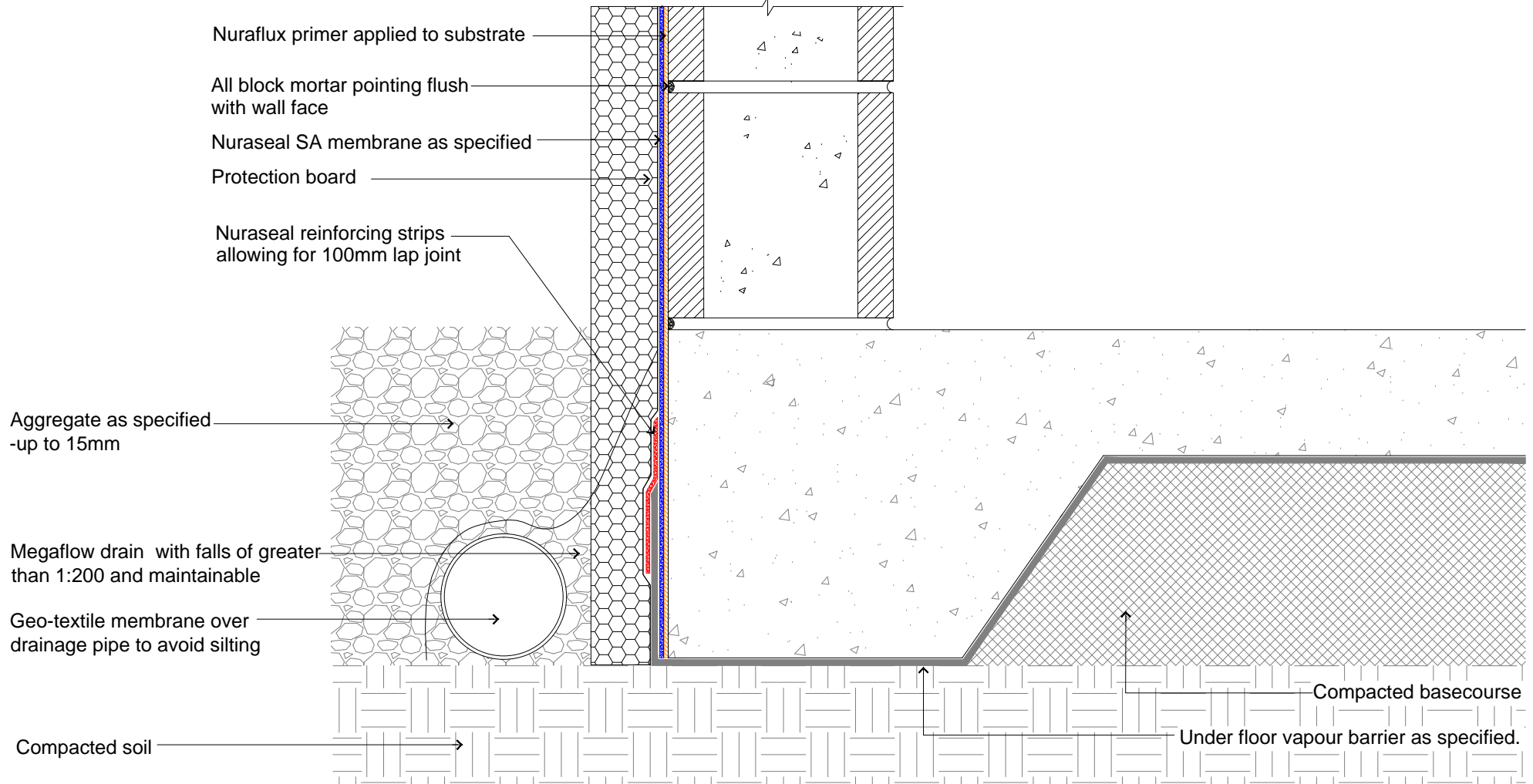
**Preparations**

All surfaces must be smooth, clean and dry. Loose material and sharp protrusions should be removed mechanically. All areas receiving torch applied membrane should be primed with Nuralite Nuraflux Primer. Allow to dry completely. The newly applied primer should be protected from contamination.

**Angles and Corners**

These should be reinforced with a 330mm wide piece of Nuraseal (Reinforcing Strip) equidistant across the previously primed area. Internal and external corners should be waterproofed with Nuraseal Membrane.

**TANKING UNDER THE SLAB MUST BE CONSIDERED WHEN  
SLAB FFL (finished floor level) IS 300mm BELOW OUTSIDE FFL**



**Nuralite Waterproofing Ltd.**  
 53A Victoria Street, Onehunga,  
 Auckland 1061, New Zealand  
 TEL: (64) (9) 579-2046  
 FAX: (64) (9) 579-5136  
 email: info@nuralite.co.nz  
 web: www.nuralite.co.nz

*All applications to be installed by an authorised nuralite applicator. All materials to be applied in accordance with standard published installation instruction and product data sheet should be consulted at all times. This drawing is for comment & approval it must not be used for construction until authorised by the site specifier or other relevant technical expert. This detail drawing is to be used only as a part of the nuralite specification package.*  
 All drawings are subject to copyright. Unauthorised use is prohibited  
 © NURALITE WATERPROOFING Ltd.

PRODUCT:		<b>NURASEAL</b>	
DESCRIPTION:		TANKING AROUND BASEMENT FOOTING	
SCALE:	NTS	PREVIOUS DWG No:	New
REVISION:	Rev F	DATE:	APR 14
			DWG No: <b>TCS-.B1</b>

**THIS DRAWING IS INDICATIVE ONLY AND BY NO MEANS COMPREHENSIVE**

**NOTES:-**

All sharp edges/corners to be arrised

**Preparations**

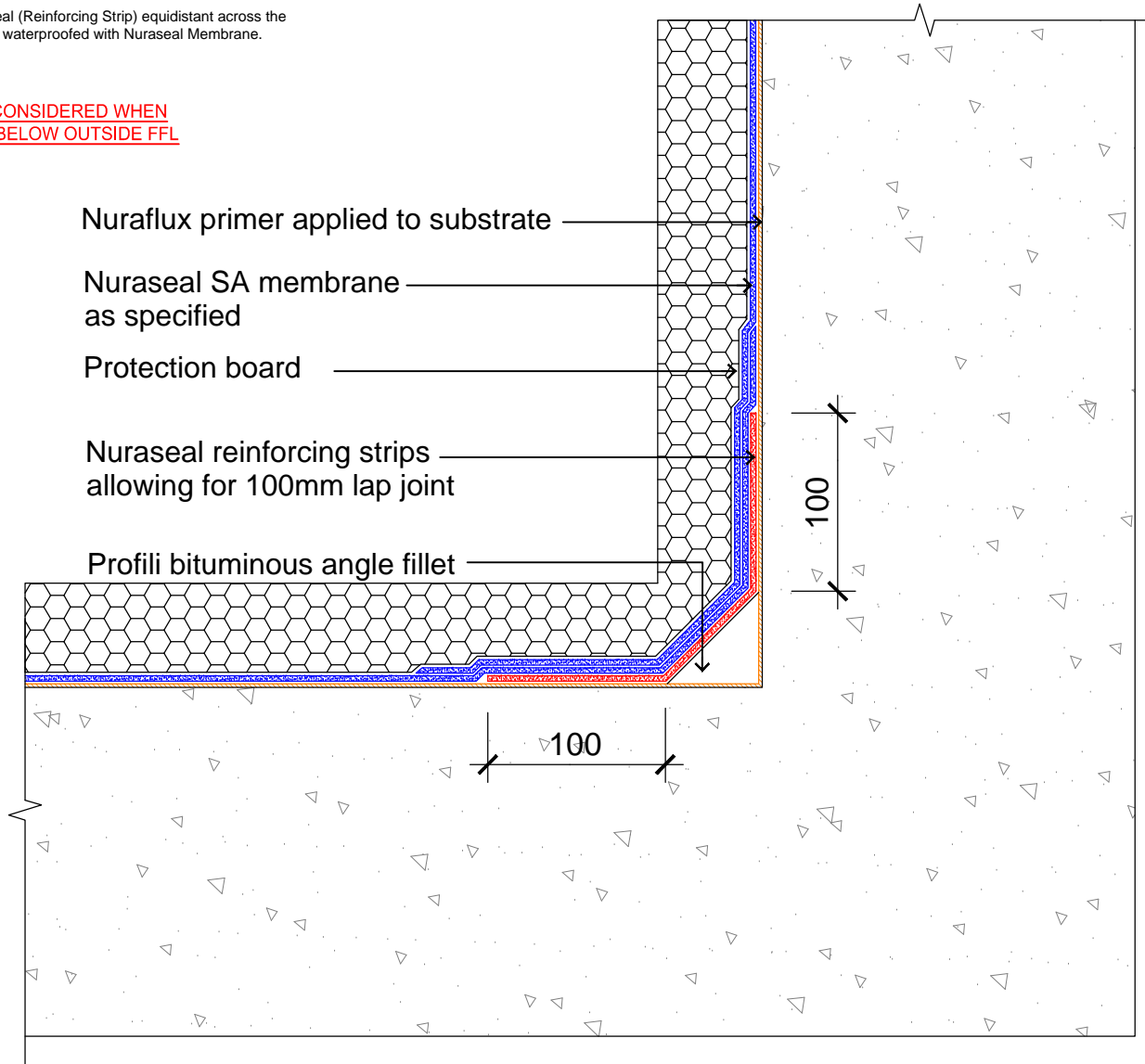
All surfaces must be smooth, clean and dry. Loose material and sharp protrusions should be removed mechanically. All areas receiving torch applied membrane should be primed with Nuralite Nuraflux Primer. Allow to dry completely. The newly applied primer should be protected from contamination.

**Angles and Corners**

These should be reinforced with a 330mm wide piece of Nuraseal (Reinforcing Strip) equidistant across the previously primed area. Internal and external corners should be waterproofed with Nuraseal Membrane.

**PLAN VIEW**

**TANKING UNDER THE SLAB MUST BE CONSIDERED WHEN SLAB FFL (finished floor level) IS 300mm BELOW OUTSIDE FFL**



Nuraflux primer applied to substrate

Nuraseal SA membrane as specified

Protection board

Nuraseal reinforcing strips allowing for 100mm lap joint

Profili bituminous angle fillet



**Nuralite Waterproofing Ltd.**

53A Victoria Street, Onehunga,  
Auckland 1061, New Zealand  
TEL: (64) (9) 579-2046  
FAX: (64) (9) 579-5136  
email: info@nuralite.co.nz  
web: www.nuralite.co.nz

*All applications to be installed by an authorised nuralite applicator. All materials to be applied in accordance with standard published installation instruction and product data sheet should be consulted at all times. This drawing is for comment & approval it must not be used for construction until authorised by the site specifier or other relevant technical expert. This detail drawing is to be used only as a part of the nuralite specification package.*  
*All drawings are subject to copyright. Unauthorised use is prohibited*  
© NURALITE WATERPROOFING Ltd.

PRODUCT:

**NURASEAL**

DESCRIPTION:

**INTERNAL CORNER**

SCALE: NTS  
REVISION: Rev F

PREVIOUS DWG No: New  
DATE: APR 14

DWG No: **TCS-.C1**

**THIS DRAWING IS INDICATIVE ONLY AND BY NO MEANS COMPREHENSIVE**

**NOTES:-**

All sharp edges/corners to be arrised

**Preparations**

All surfaces must be smooth, clean and dry. Loose material and sharp protrusions should be removed mechanically. All areas receiving torch applied membrane should be primed with Nuralite Nuraflux Primer. Allow to dry completely. The newly applied primer should be protected from contamination.

**Angles and Corners**

These should be reinforced with a 330mm wide piece of Nuraseal (Reinforcing Strip) equidistant across the previously primed area. Internal and external corners should be waterproofed with Nuraseal Membrane.

**PLAN VIEW**

**TANKING UNDER THE SLAB MUST BE CONSIDERED WHEN SLAB FFL (finished floor level) IS 300mm BELOW OUTSIDE FFL**

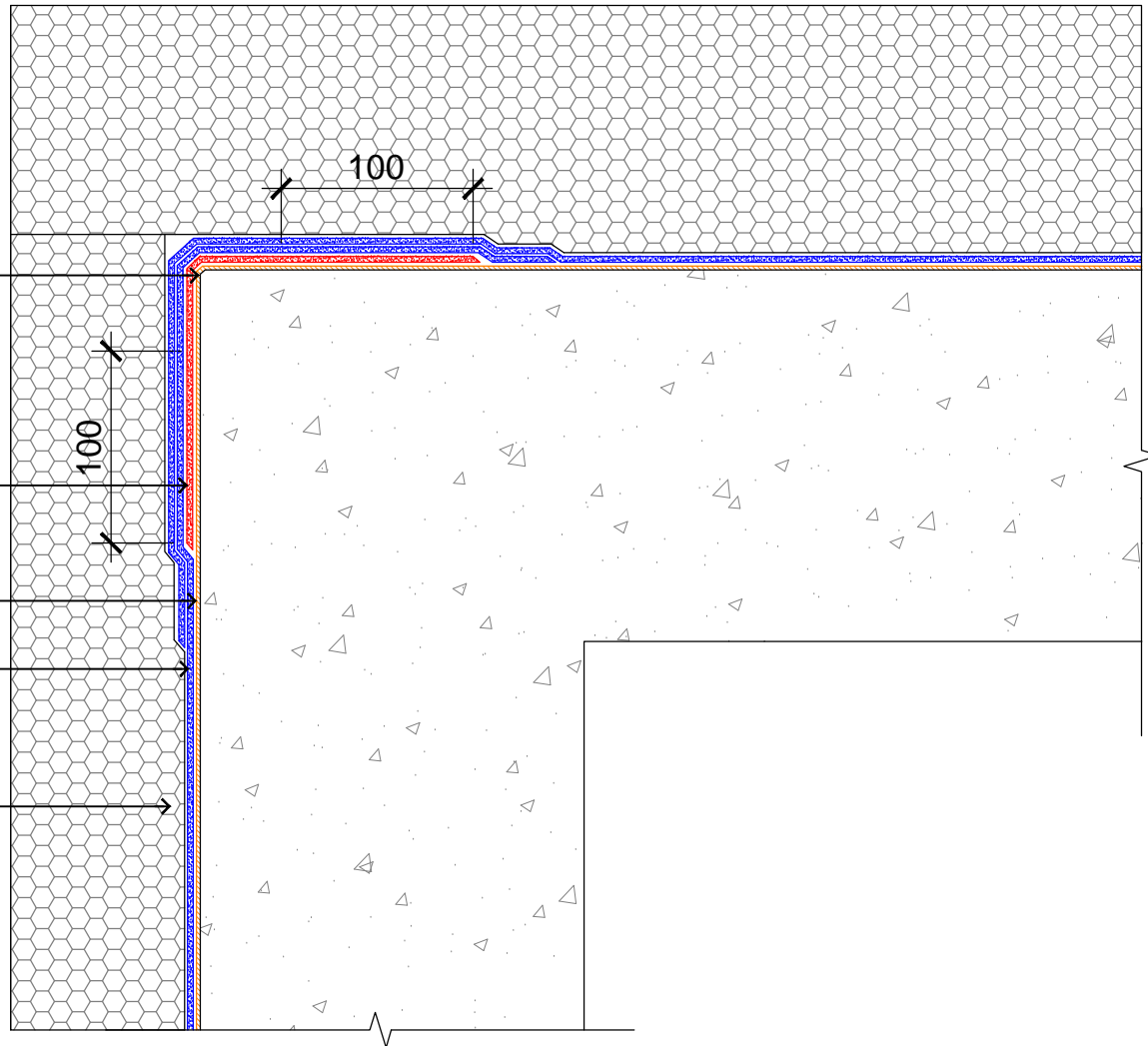
Chamfer

Nuraseal reinforcing strips allowing for 100mm lap joint

Nuraflux primer applied to substrate

Nuraseal SA membrane system as specified

Protection board



**Nuralite Waterproofing Ltd.**

53A Victoria Street, Onehunga,  
Auckland 1061, New Zealand  
TEL: (64) (9) 579-2046  
FAX: (64) (9) 579-5136  
email: info@nuralite.co.nz  
web: www.nuralite.co.nz

*All applications to be installed by an authorised nuralite applicator. All materials to be applied in accordance with standard published installation instruction and product data sheet should be consulted at all times. This drawing is for comment & approval it must not be used for construction until authorised by the site specifier or other relevant technical expert. This detail drawing is to be used only as a part of the nuralite specification package.*  
All drawings are subject to copyright. Unauthorised use is prohibited  
© NURALITE WATERPROOFING Ltd.

PRODUCT:

**NURASEAL**

DESCRIPTION:

**EXTERNAL CORNER**

SCALE: NTS  
REVISION: Rev E

PREVIOUS DWG No: New  
DATE: APR 14

DWG No: **TCS-D1**

**THIS DRAWING IS INDICATIVE ONLY AND BY NO MEANS COMPREHENSIVE**

**NOTES:-**

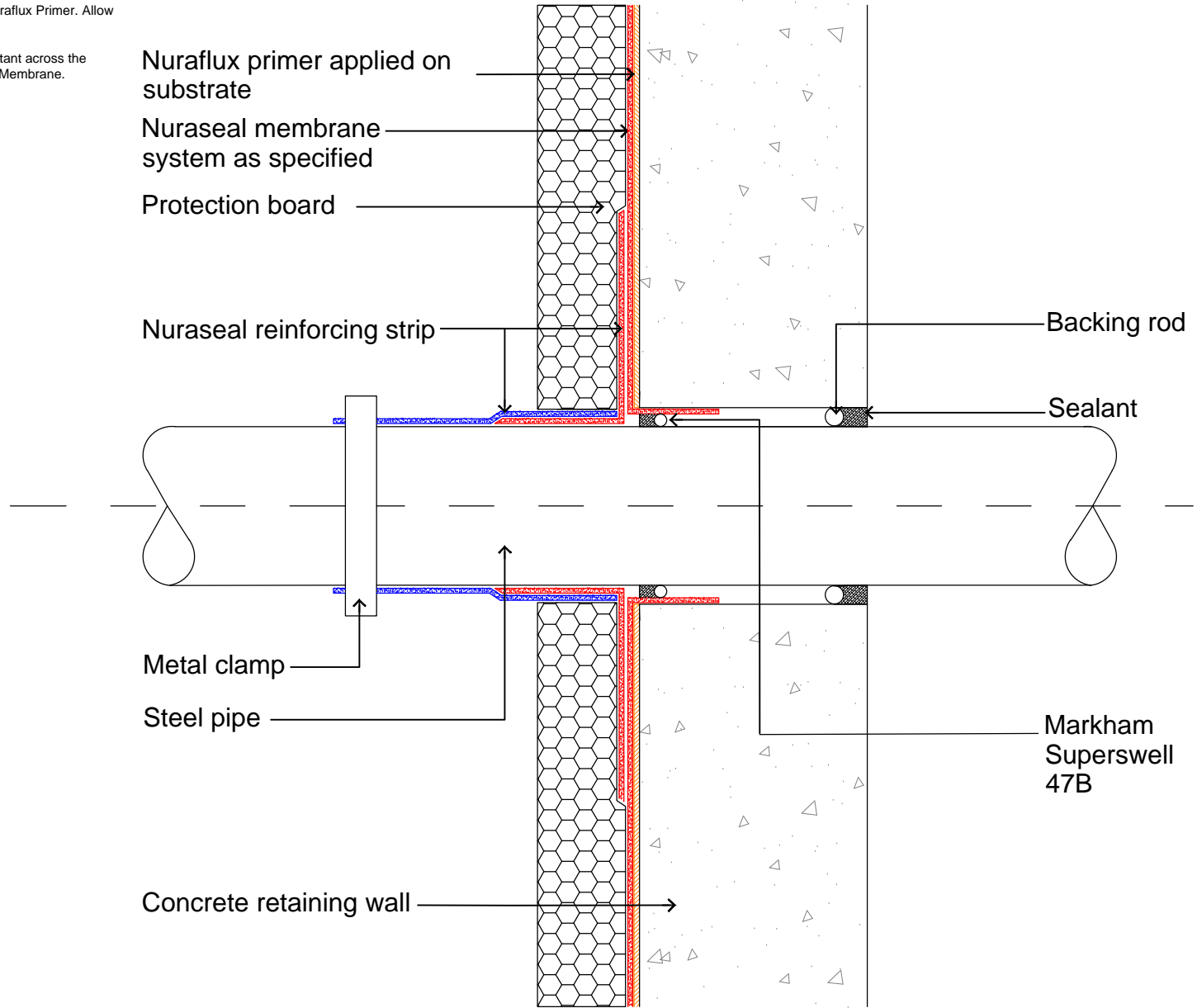
All sharp edges/corners to be arrised

**Preparations**

All surfaces must be smooth, clean and dry. Loose material and sharp protrusions should be removed mechanically. All areas receiving torch applied membrane should be primed with Nuralite Nuraflex Primer. Allow to dry completely. The newly applied primer should be protected from contamination.

**Angles and Corners**

These should be reinforced with a 330mm wide piece of Nuraseal (Reinforcing Strip) equidistant across the previously primed area. Internal and external corners should be waterproofed with Nuraseal Membrane.



**TANKING UNDER THE SLAB MUST BE CONSIDERED WHEN SLAB FFL (finished floor level) IS 300mm BELOW OUTSIDE FFL**



**Nuralite Waterproofing Ltd.**

53A Victoria Street, Onehunga,  
Auckland 1061, New Zealand  
TEL: (64) (9) 579-2046  
FAX: (64) (9) 579-5136  
email: info@nuralite.co.nz  
web: www.nuralite.co.nz

*All applications to be installed by an authorised nuralite applicator. All materials to be applied in accordance with standard published installation instruction and product data sheet should be consulted at all times. This drawing is for comment & approval it must not be used for construction until authorised by the site specifier or other relevant technical expert. This detail drawing is to be used only as a part of the nuralite specification package.*  
*All drawings are subject to copyright. Unauthorised use is prohibited*  
© NURALITE WATERPROOFING Ltd.

PRODUCT:

**NURASEAL**

DESCRIPTION:

**CONCRETE WALL PENETRATION**

SCALE: NTS  
REVISION: Rev F

PREVIOUS DWG No: New  
DATE: APR 14

DWG No: **TCS-.E1**

**THIS DRAWING IS INDICATIVE ONLY AND BY NO MEANS COMPREHENSIVE**

**NOTES:-**

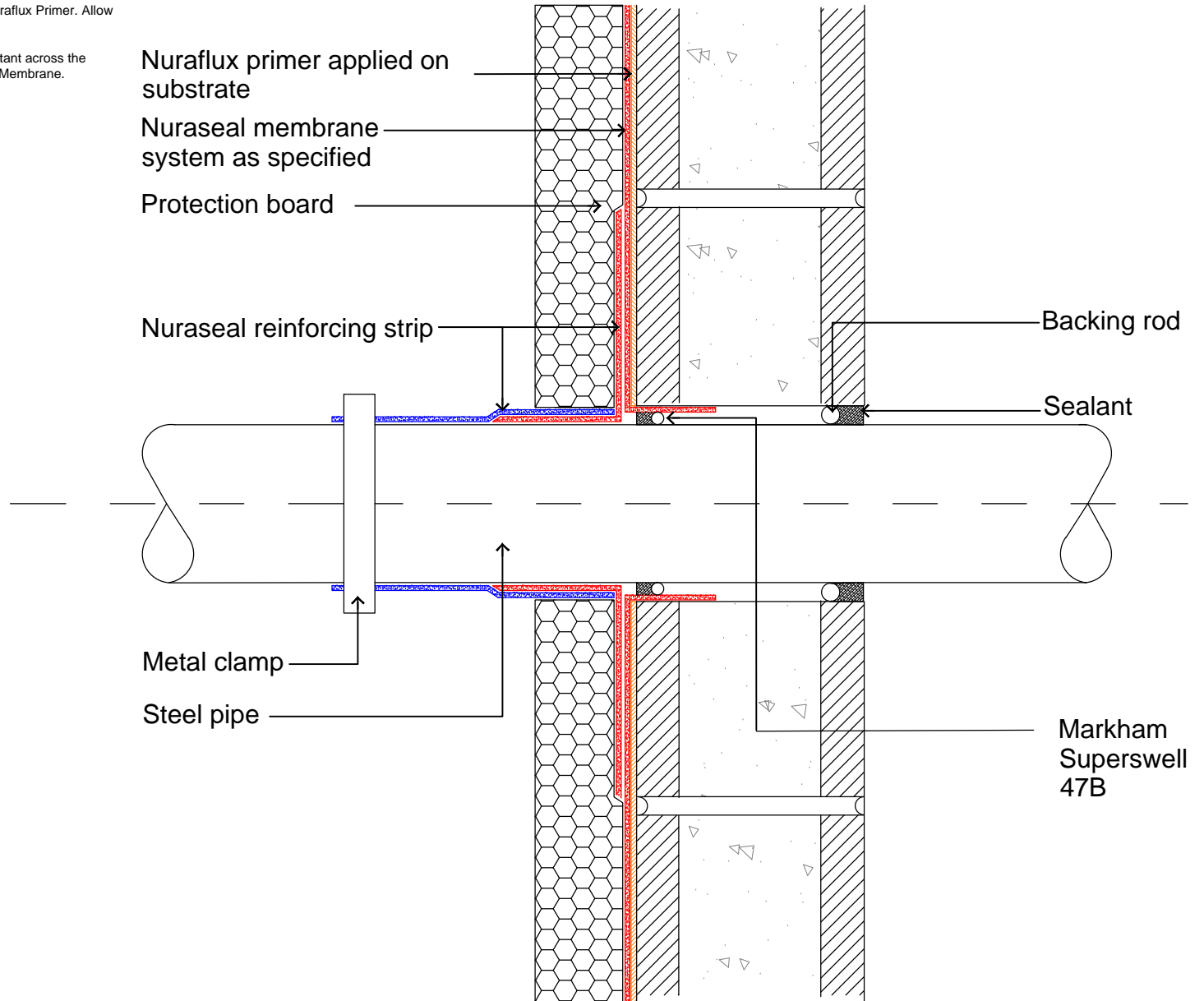
All sharp edges/corners to be arrised

**Preparations**

All surfaces must be smooth, clean and dry. Loose material and sharp protrusions should be removed mechanically. All areas receiving torch applied membrane should be primed with Nuralite Nuraflex Primer. Allow to dry completely. The newly applied primer should be protected from contamination.

**Angles and Corners**

These should be reinforced with a 330mm wide piece of Nuraseal (Reinforcing Strip) equidistant across the previously primed area. Internal and external corners should be waterproofed with Nuraseal Membrane.



**TANKING UNDER THE SLAB MUST BE CONSIDERED WHEN SLAB FFL (finished floor level) IS 300mm BELOW OUTSIDE FFL**



**Nuralite Waterproofing Ltd.**

53A Victoria Street, Onehunga,  
Auckland 1061, New Zealand  
TEL: (64) (9) 579-2046  
FAX: (64) (9) 579-5136  
email: info@nuralite.co.nz  
web: www.nuralite.co.nz

*All applications to be installed by an authorised nuralite applicator. All materials to be applied in accordance with standard published installation instruction and product data sheet should be consulted at all times. This drawing is for comment & approval it must not be used for construction until authorised by the site specifier or other relevant technical expert. This detail drawing is to be used only as a part of the nuralite specification package.*  
*All drawings are subject to copyright. Unauthorised use is prohibited*  
© NURALITE WATERPROOFING Ltd.

PRODUCT:		<b>NURASEAL</b>	
DESCRIPTION:		BLOCK WALL PENETRATION	
SCALE:	NTS	PREVIOUS DWG No:	New
REVISION:	Rev F	DATE:	APR 14
			DWG No: <b>TCS-.E2</b>

**THIS DRAWING IS INDICATIVE ONLY AND BY NO MEANS COMPREHENSIVE**

**NOTES:-**

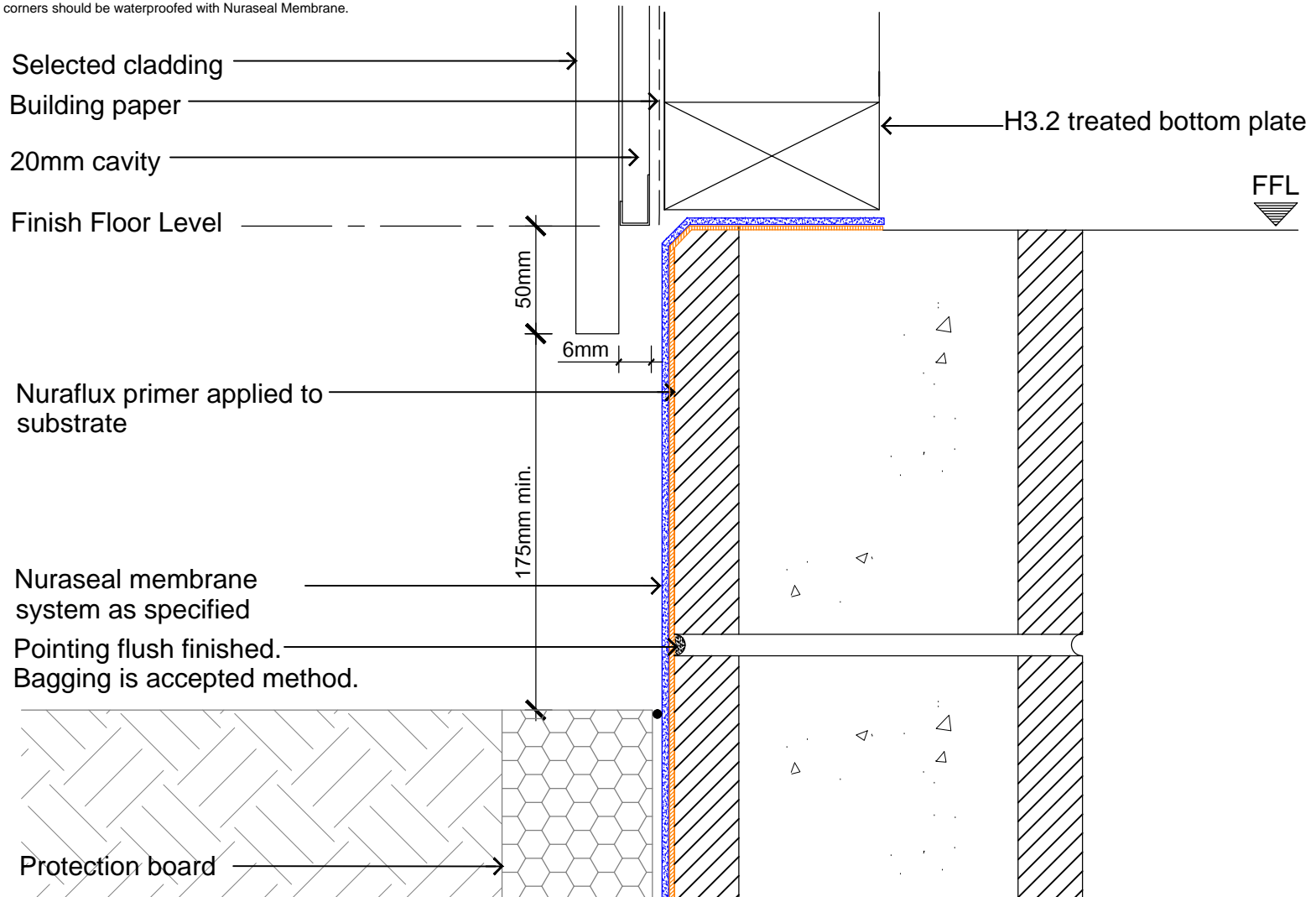
All sharp edges/corners to be arrised

**Preparations**

All surfaces must be smooth, clean and dry. Loose material and sharp protrusions should be removed mechanically. All areas receiving torch applied membrane should be primed with Nuralite Nuraflux Primer. Allow to dry completely. The newly applied primer should be protected from contamination.

**Angles and Corners**

These should be reinforced with a 330mm wide piece of Nuraseal (Reinforcing Strip) equidistant across the previously primed area. Internal and external corners should be waterproofed with Nuraseal Membrane.



**TANKING UNDER THE SLAB MUST BE CONSIDERED WHEN SLAB FFL (finished floor level) IS 300mm BELOW OUTSIDE FFL**

E2/AS1



**Nuralite Waterproofing Ltd.**

53A Victoria Street, Onehunga,  
Auckland 1061, New Zealand  
TEL: (64) (9) 579-2046  
FAX: (64) (9) 579-5136  
email: info@nuralite.co.nz  
web: www.nuralite.co.nz

*All applications to be installed by an authorised nuralite applicator. All materials to be applied in accordance with standard published installation instruction and product data sheet should be consulted at all times. This drawing is for comment & approval it must not be used for construction until authorised by the site specifier or other relevant technical expert. This detail drawing is to be used only as a part of the nuralite specification package.  
All drawings are subject to copyright. Unauthorised use is prohibited  
© NURALITE WATERPROOFING Ltd.*

PRODUCT:

**NURASEAL**

DESCRIPTION:

**TERMINATION UNDER BOTTOM PLATE**

SCALE: NTS  
REVISION: Rev F

PREVIOUS DWG No: New  
DATE: APR 14

DWG No: **TCS-.F1**

**THIS DRAWING IS INDICATIVE ONLY AND BY NO MEANS COMPREHENSIVE**

**NOTES:-**

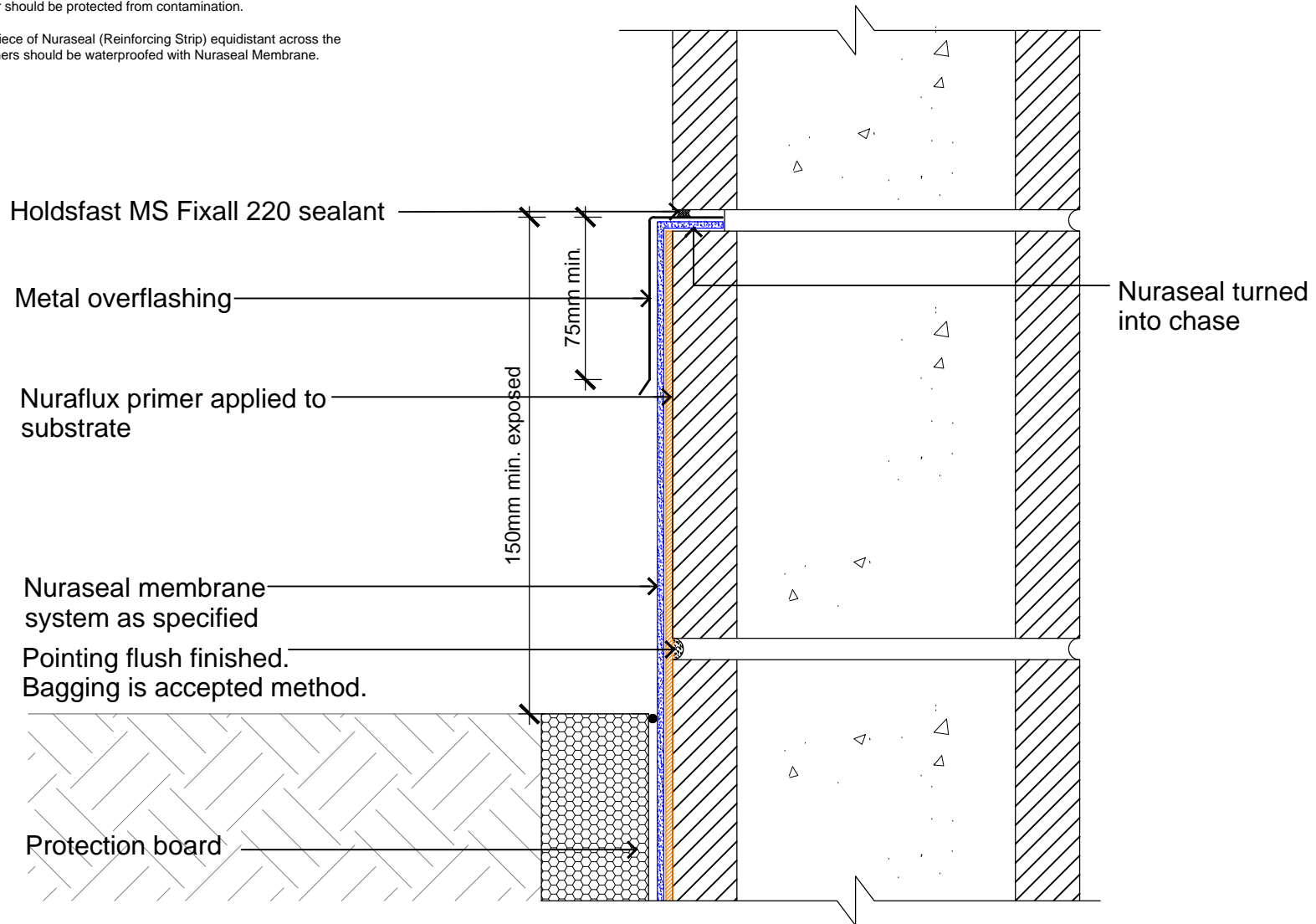
All sharp edges/corners to be arrised

**Preparations**

All surfaces must be smooth, clean and dry. Loose material and sharp protrusions should be removed mechanically. All areas receiving torch applied membrane should be primed with Nuralite Nuraflex Primer. Allow to dry completely. The newly applied primer should be protected from contamination.

**Angles and Corners**

These should be reinforced with a 330mm wide piece of Nuraseal (Reinforcing Strip) equidistant across the previously primed area. Internal and external corners should be waterproofed with Nuraseal Membrane.



**TANKING UNDER THE SLAB MUST BE CONSIDERED WHEN SLAB FFL (finished floor level) IS 300mm BELOW OUTSIDE FFL**



**Nuralite Waterproofing Ltd.**

53A Victoria Street, Onehunga,  
Auckland 1061, New Zealand  
TEL: (64) (9) 579-2046  
FAX: (64) (9) 579-5136  
email: info@nuralite.co.nz  
web: www.nuralite.co.nz

*All applications to be installed by an authorised nuralite applicator. All materials to be applied in accordance with standard published installation instruction and product data sheet should be consulted at all times. This drawing is for comment & approval it must not be used for construction until authorised by the site specifier or other relevant technical expert. This detail drawing is to be used only as a part of the nuralite specification package.*  
*All drawings are subject to copyright. Unauthorised use is prohibited*  
© NURALITE WATERPROOFING Ltd.

PRODUCT:

**NURASEAL**

DESCRIPTION:

TERMINATION INTO CHASE

SCALE: NTS  
REVISION: Rev F

PREVIOUS DWG No: New  
DATE: APR 14

DWG No: TCS-.F2



**THIS DRAWING IS INDICATIVE ONLY AND BY NO MEANS COMPREHENSIVE**

**NOTES:-**

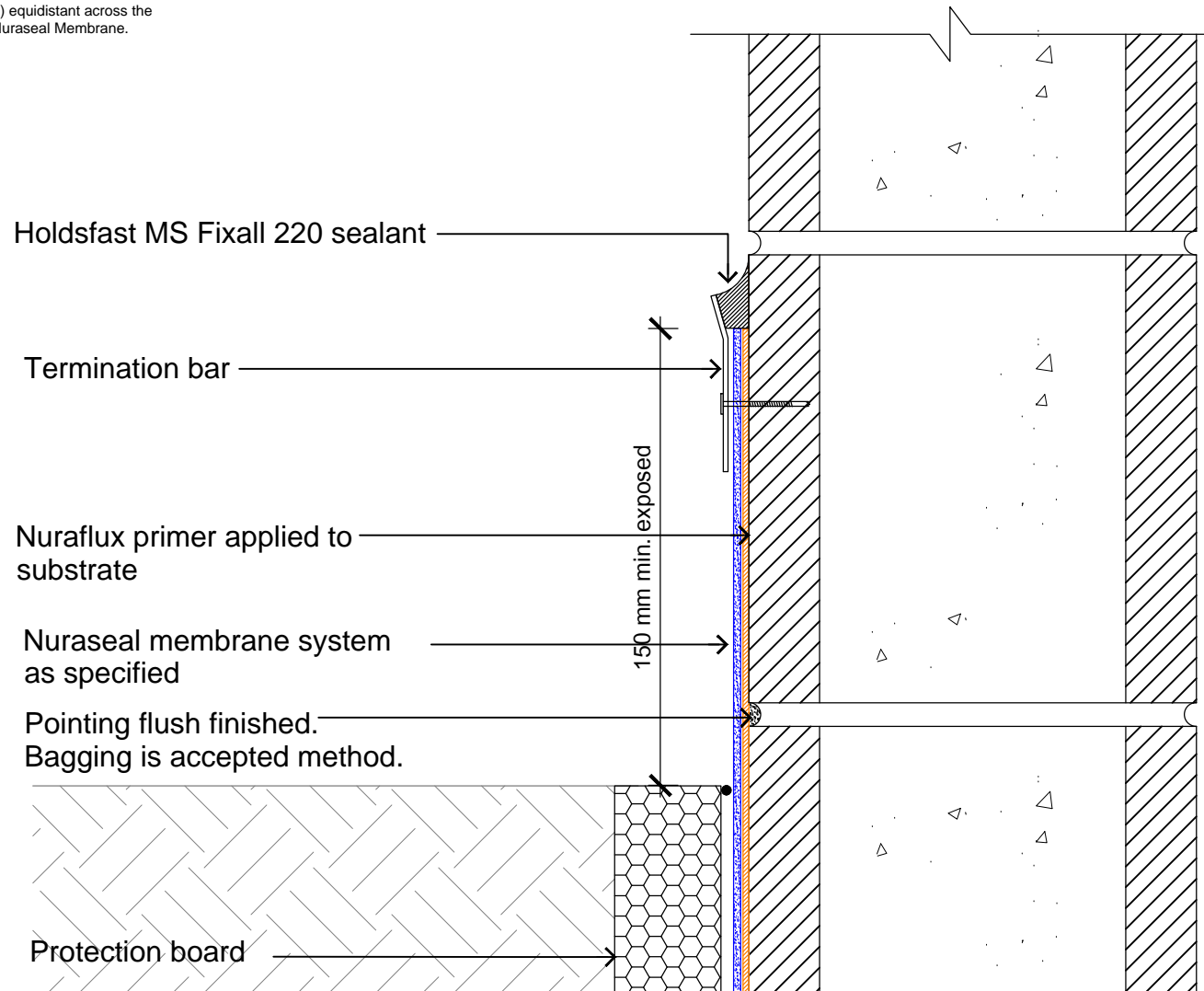
All sharp edges/corners to be arrised

**Preparations**

All surfaces must be smooth, clean and dry. Loose material and sharp protrusions should be removed mechanically. All areas receiving torch applied membrane should be primed with Nuralite Nuraflux Primer. Allow to dry completely. The newly applied primer should be protected from contamination.

**Angles and Corners**

These should be reinforced with a 330mm wide piece of Nuraseal (Reinforcing Strip) equidistant across the previously primed area. Internal and external corners should be waterproofed with Nuraseal Membrane.



**TANKING UNDER THE SLAB MUST BE CONSIDERED WHEN SLAB FFL (finished floor level) IS 300mm BELOW OUTSIDE FFL**



**Nuralite Waterproofing Ltd.**

53A Victoria Street, Onehunga,  
Auckland 1061, New Zealand  
TEL: (64) (9) 579-2046  
FAX: (64) (9) 579-5136  
email: info@nuralite.co.nz  
web: www.nuralite.co.nz

*All applications to be installed by an authorised nuralite applicator. All materials to be applied in accordance with standard published installation instruction and product data sheet should be consulted at all times. This drawing is for comment & approval it must not be used for construction until authorised by the site specifier or other relevant technical expert. This detail drawing is to be used only as a part of the nuralite specification package.*  
*All drawings are subject to copyright. Unauthorised use is prohibited*  
© NURALITE WATERPROOFING Ltd.

PRODUCT:

**NURASEAL**

DESCRIPTION:

**TERMINATION USING TERMINATION BAR**

SCALE: NTS  
REVISION: Rev F

PREVIOUS DWG No: New  
DATE: APR 14

DWG No: **TCS-.F3**

**THIS DRAWING IS INDICATIVE ONLY AND BY NO MEANS COMPREHENSIVE**

**NOTES:-**

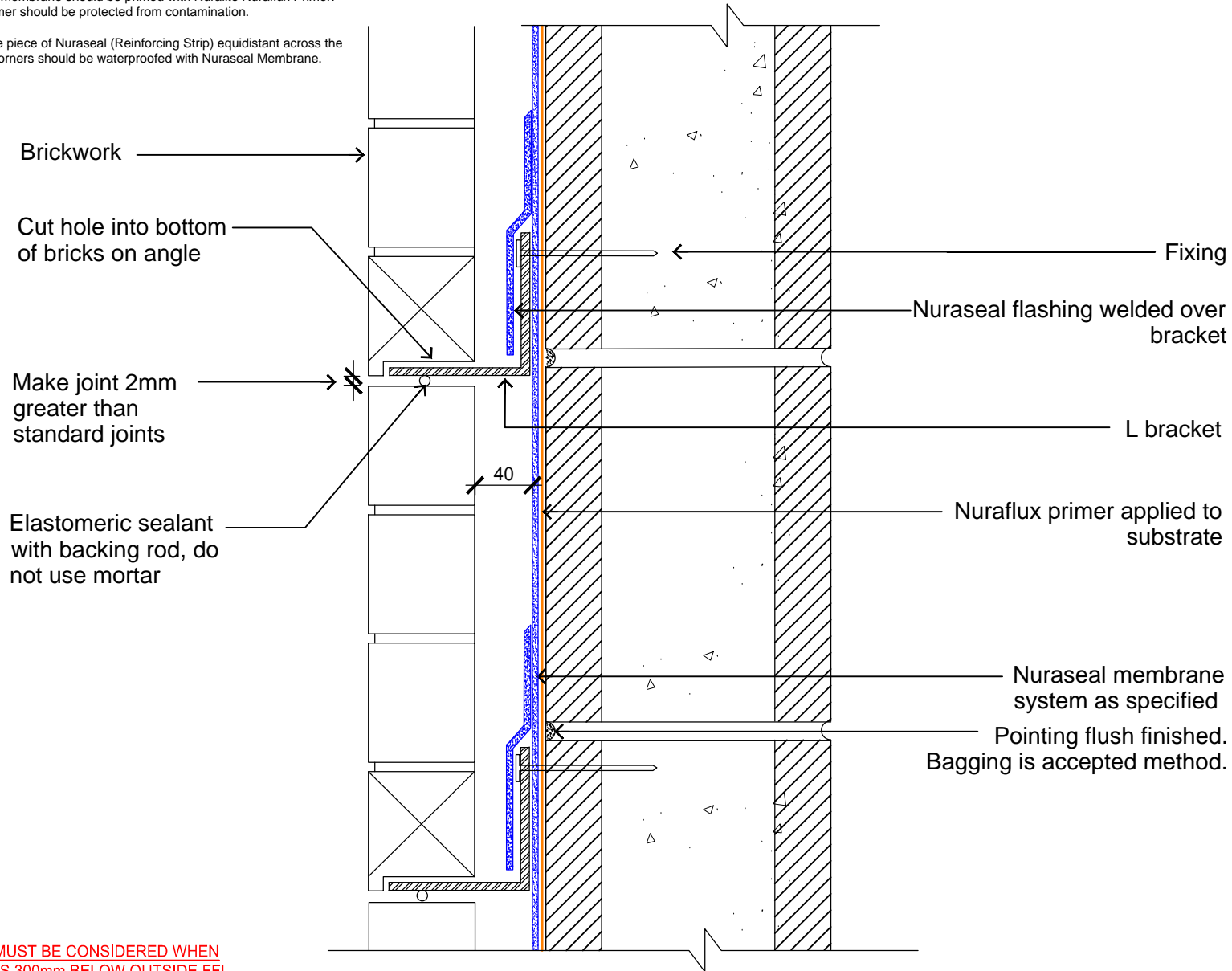
All sharp edges/corners to be arrised

**Preparations**

All surfaces must be smooth, clean and dry. Loose material and sharp protrusions should be removed mechanically. All areas receiving torch applied membrane should be primed with Nuralite Nuraflux Primer. Allow to dry completely. The newly applied primer should be protected from contamination.

**Angles and Corners**

These should be reinforced with a 330mm wide piece of Nuraseal (Reinforcing Strip) equidistant across the previously primed area. Internal and external corners should be waterproofed with Nuraseal Membrane.



**TANKING UNDER THE SLAB MUST BE CONSIDERED WHEN SLAB FFL (finished floor level) IS 300mm BELOW OUTSIDE FFL**



**Nuralite Waterproofing Ltd.**

53A Victoria Street, Onehunga,  
Auckland 1061, New Zealand  
TEL: (64) (9) 579-2046  
FAX: (64) (9) 579-5136  
email: info@nuralite.co.nz  
web: www.nuralite.co.nz

*All applications to be installed by an authorised nuralite applicator. All materials to be applied in accordance with standard published installation instruction and product data sheet should be consulted at all times. This drawing is for comment & approval it must not be used for construction until authorised by the site specifier or other relevant technical expert. This detail drawing is to be used only as a part of the nuralite specification package.*  
All drawings are subject to copyright. Unauthorised use is prohibited  
© NURALITE WATERPROOFING Ltd.

PRODUCT:

**NURASEAL**

DESCRIPTION:

**L BRACKET IN BRICKWORK**

SCALE: NTS

PREVIOUS DWG No: New

DWG No: **TCS-.F4**

REVISION: Rev F

DATE: APR 14

**THIS DRAWING IS INDICATIVE ONLY AND BY NO MEANS COMPREHENSIVE**

Nuraflux Primer applied on substrate

Form Flow Protection Board

Nuraseal membrane system  
as specified

Nuraseal reinforcing strip

100mm

Specified sealant (Width greater than  
depth with concave finish)

Non Adherent Backing Rod

Precast Concrete Panel

20mm gap approx



**Nuralite Waterproofing Ltd.**

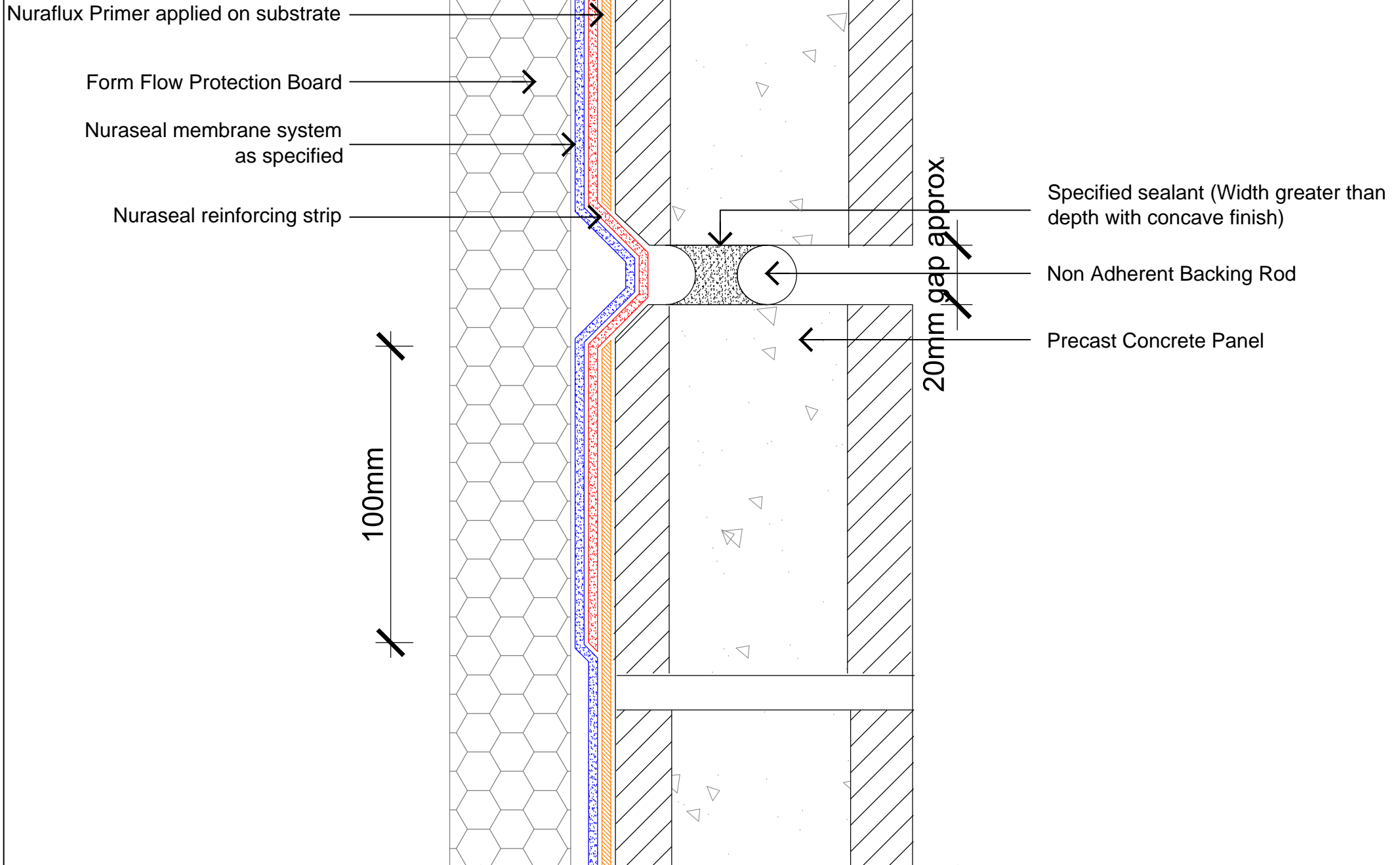
53A Victoria Street, Onehunga,  
Auckland 1061, New Zealand  
TEL: (64) (9) 579-2046  
FAX: (64) (9) 579-5136  
email: info@nuralite.co.nz  
web: www.nuralite.co.nz

*All applications to be installed by an authorised nuralite applicator. All materials to be applied in accordance with standard published installation instruction and product data sheet should be consulted at all times. This drawing is for comment & approval it must not be used for construction until authorised by the site specifier or other relevant technical expert. This detail drawing is to be used only as a part of the nuralite specification package.*

*All drawings are subject to copyright. Unauthorised use is prohibited*  
© NURALITE WATERPROOFING Ltd.

PRODUCT: <b>NURASEAL</b>			
DESCRIPTION: PRECAST PANEL - MINOR EXPANSION JOINT/TANKING			
SCALE: NTS	PREVIOUS DWG No: New	DWG No: <b>TCS-.11</b>	
REVISION: Rev A	DATE: APR 14		

**THIS DRAWING IS INDICATIVE ONLY AND BY NO MEANS COMPREHENSIVE**



**Nuralite Waterproofing Ltd.**

53A Victoria Street, Onehunga,  
Auckland 1061, New Zealand  
TEL: (64) (9) 579-2046  
FAX: (64) (9) 579-5136  
email: info@nuralite.co.nz  
web: www.nuralite.co.nz

*All applications to be installed by an authorised nuralite applicator. All materials to be applied in accordance with standard published installation instruction and product data sheet should be consulted at all times. This drawing is for comment & approval it must not be used for construction until authorised by the site specifier or other relevant technical expert. This detail drawing is to be used only as a part of the nuralite specification package.*

*All drawings are subject to copyright. Unauthorised use is prohibited*  
© NURALITE WATERPROOFING Ltd.

PRODUCT:		<b>NURASEAL</b>	
DESCRIPTION:		PRECAST PANEL - MINOR EXPANSION JOINT/TANKING	
SCALE:	NTS	PREVIOUS DWG No:	New
REVISION:	Rev A	DATE:	APR 14
			DWG No: <b>TCS-.12</b>