

**THIS DRAWING IS INDICATIVE ONLY AND BY NO MEANS COMPREHENSIVE**

**NOTES:-**

All sharp edges/corners to be arrised

**Preparations**

All surfaces must be smooth, clean and dry. Loose material and sharp protrusions should be removed mechanically. All areas receiving torch applied membrane should be primed with Nuralite Nuraflux Primer. Allow to dry completely. The newly applied primer should be protected from contamination.

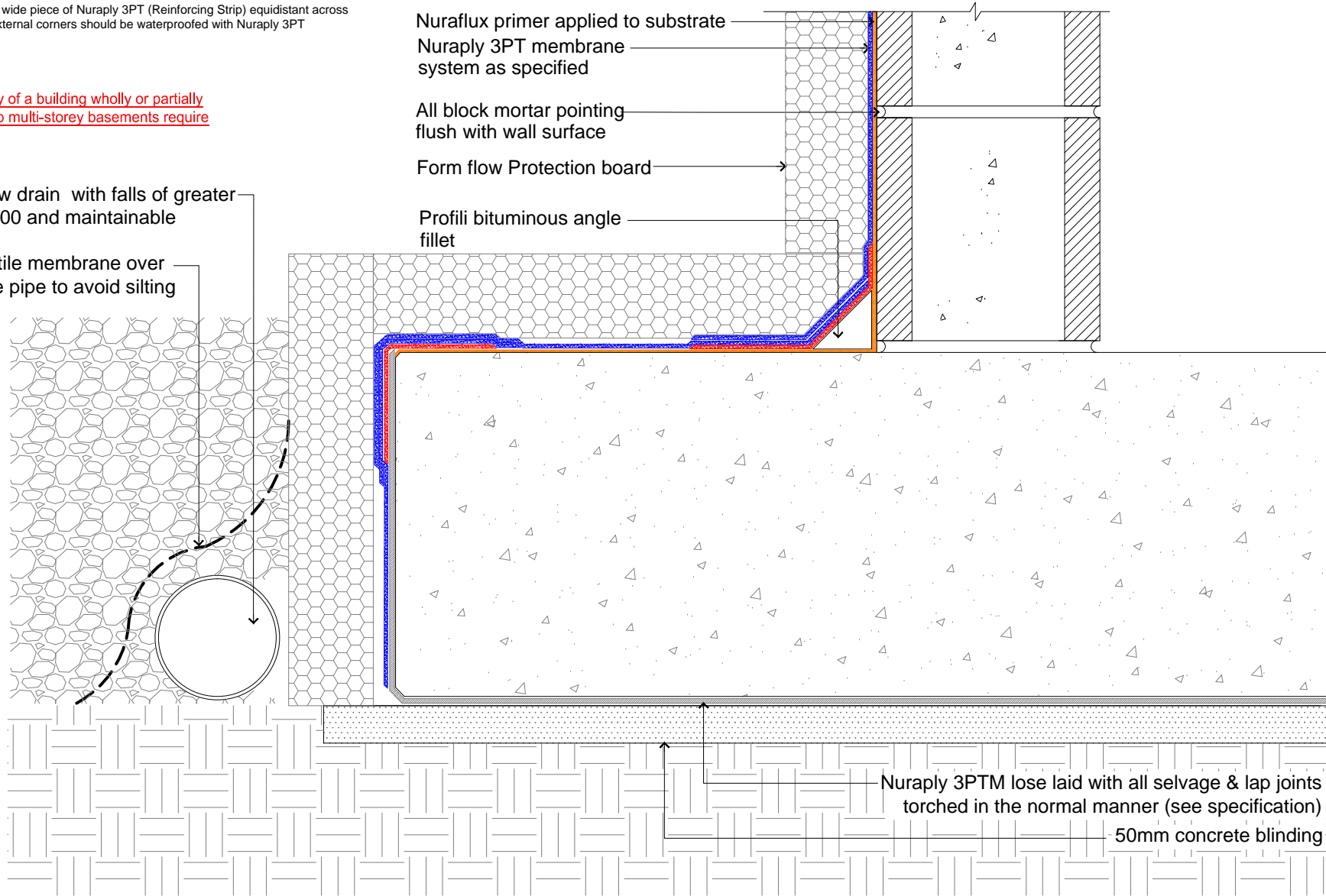
**Angles and Corners**

These should be reinforced with a 330mm wide piece of Nuraply 3PT (Reinforcing Strip) equidistant across the previously primed area. Internal and external corners should be waterproofed with Nuraply 3PT Membrane.

For waterproofing the lower storey of a building wholly or partially below ground. Buildings with deep multi-storey basements require specialized, bespoke, designs.

Megaflow drain with falls of greater than 1:200 and maintainable

Geo-textile membrane over drainage pipe to avoid silting



**Nuralite Waterproofing Ltd.**

53A Victoria Street, Onehunga,  
Auckland 1061, New Zealand  
TEL: (64) (9) 579-2046  
FAX: (64) (9) 579-5136  
email: info@nuralite.co.nz  
web: www.nuralite.co.nz

*All applications to be installed by an authorised nuralite applicator. All materials to be applied in accordance with standard published installation instruction and product data sheet should be consulted at all times. This drawing is for comment & approval it must not be used for construction until authorised by the site specifier or other relevant technical expert. This detail drawing is to be used only as a part of the nuralite specification package.*

*All drawings are subject to copyright. Unauthorised use is prohibited  
© NURALITE WATERPROOFING Ltd.*

PRODUCT:

**NURAPLY 3PT**

DESCRIPTION:

**TANKING AROUND TOE DETAIL**

SCALE: NTS  
REVISION: Rev F

PREVIOUS DWG No: New  
DATE: APR 14

DWG No: **TCP-A1**

**THIS DRAWING IS INDICATIVE ONLY AND BY NO MEANS COMPREHENSIVE**

**NOTES:-**

All sharp edges/corners to be arrised

**Preparations**

All surfaces must be smooth, clean and dry. Loose material and sharp protrusions should be removed mechanically. All areas receiving torch applied membrane should be primed with Nuralite Nuraflux Primer. Allow to dry completely. The newly applied primer should be protected from contamination.

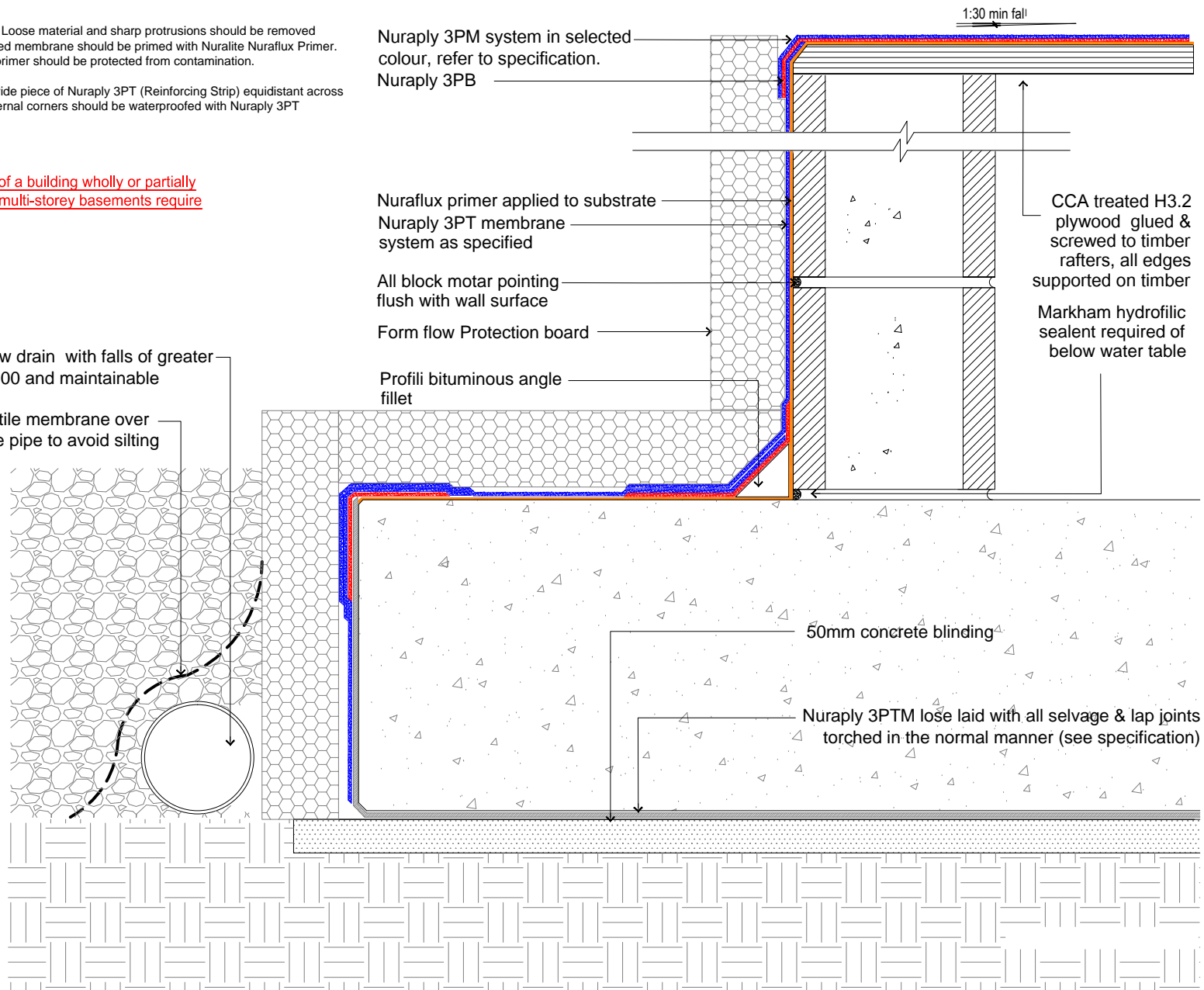
**Angles and Corners**

These should be reinforced with a 330mm wide piece of Nuraply 3PT (Reinforcing Strip) equidistant across the previously primed area. Internal and external corners should be waterproofed with Nuraply 3PT Membrane.

For waterproofing the lower storey of a building wholly or partially below ground. Buildings with deep multi-storey basements require specialized, bespoke, designs.

Megaflow drain with falls of greater than 1:200 and maintainable

Geo-textile membrane over drainage pipe to avoid silting



**Nuralite Waterproofing Ltd.**

53A Victoria Street, Onehunga,  
Auckland 1061, New Zealand  
TEL: (64) (9) 579-2046  
FAX: (64) (9) 579-5136  
email: info@nuralite.co.nz  
web: www.nuralite.co.nz

*All applications to be installed by an authorised nuralite applicator. All materials to be applied in accordance with standard published installation instruction and product data sheet should be consulted at all times. This drawing is for comment & approval it must not be used for construction until authorised by the site specifier or other relevant technical expert. This detail drawing is to be used only as a part of the nuralite specification package.*

*All drawings are subject to copyright. Unauthorised use is prohibited © NURALITE WATERPROOFING Ltd.*

PRODUCT:

**NURAPLY 3PT**

DESCRIPTION:

**TANKING AROUND TOE DETAIL - RETAINING WALL TO ROOF**

SCALE:

NTS

PREVIOUS DWG No: New

DWG No:

**TCP-A2**

REVISION: Rev F

DATE: APR 14

**THIS DRAWING IS INDICATIVE ONLY AND BY NO MEANS COMPREHENSIVE**

**NOTES:-**

All sharp edges/corners to be arrised

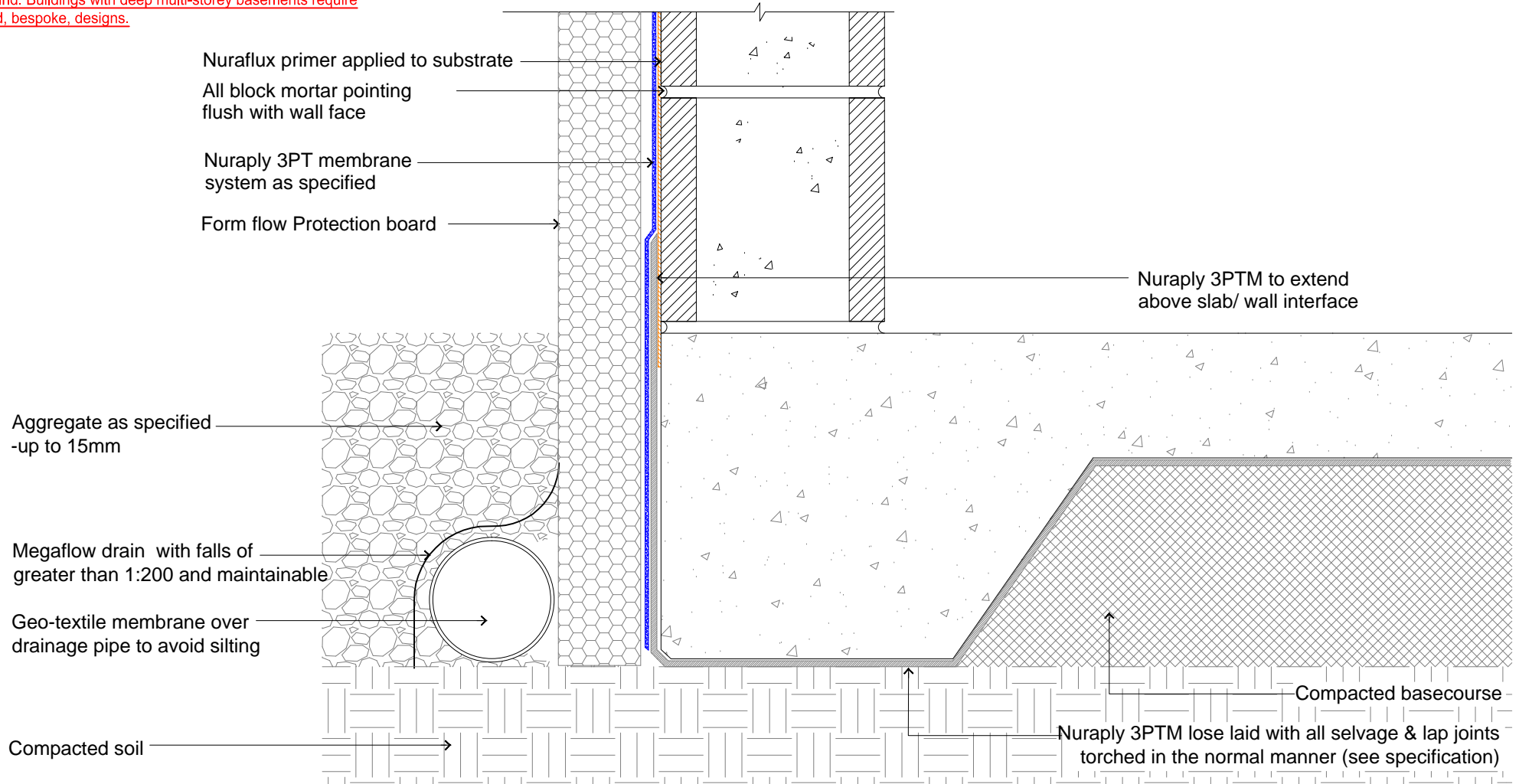
**Preparations**

All surfaces must be smooth, clean and dry. Loose material and sharp protrusions should be removed mechanically. All areas receiving torch applied membrane should be primed with Nuralite Nuraflux Primer. Allow to dry completely. The newly applied primer should be protected from contamination.

**Angles and Corners**

These should be reinforced with a 330mm wide piece of Nuraply 3PT (Reinforcing Strip) equidistant across the previously primed area. Internal and external corners should be waterproofed with Nuraply 3PT Membrane.

For waterproofing the lower storey of a building wholly or partially below ground. Buildings with deep multi-storey basements require specialized, bespoke, designs.



**Nuralite Waterproofing Ltd.**

53A Victoria Street, Onehunga,  
Auckland 1061, New Zealand  
TEL: (64) (9) 579-2046  
FAX: (64) (9) 579-5136  
email: info@nuralite.co.nz  
web: www.nuralite.co.nz

*All applications to be installed by an authorised nuralite applicator. All materials to be applied in accordance with standard published installation instruction and product data sheet should be consulted at all times. This drawing is for comment & approval it must not be used for construction until authorised by the site specifier or other relevant technical expert. This detail drawing is to be used only as a part of the nuralite specification package.*  
All drawings are subject to copyright. Unauthorised use is prohibited  
© NURALITE WATERPROOFING Ltd.

PRODUCT:

**NURAPLY 3PT**

DESCRIPTION:

TANKING AROUND BASEMENT FOOTING

SCALE: NTS

PREVIOUS DWG No: New

DWG No: **TCP-.B1**

REVISION: Rev F

DATE: APR 14

**THIS DRAWING IS INDICATIVE ONLY AND BY NO MEANS COMPREHENSIVE**

**NOTES:-**

All sharp edges/corners to be arrised

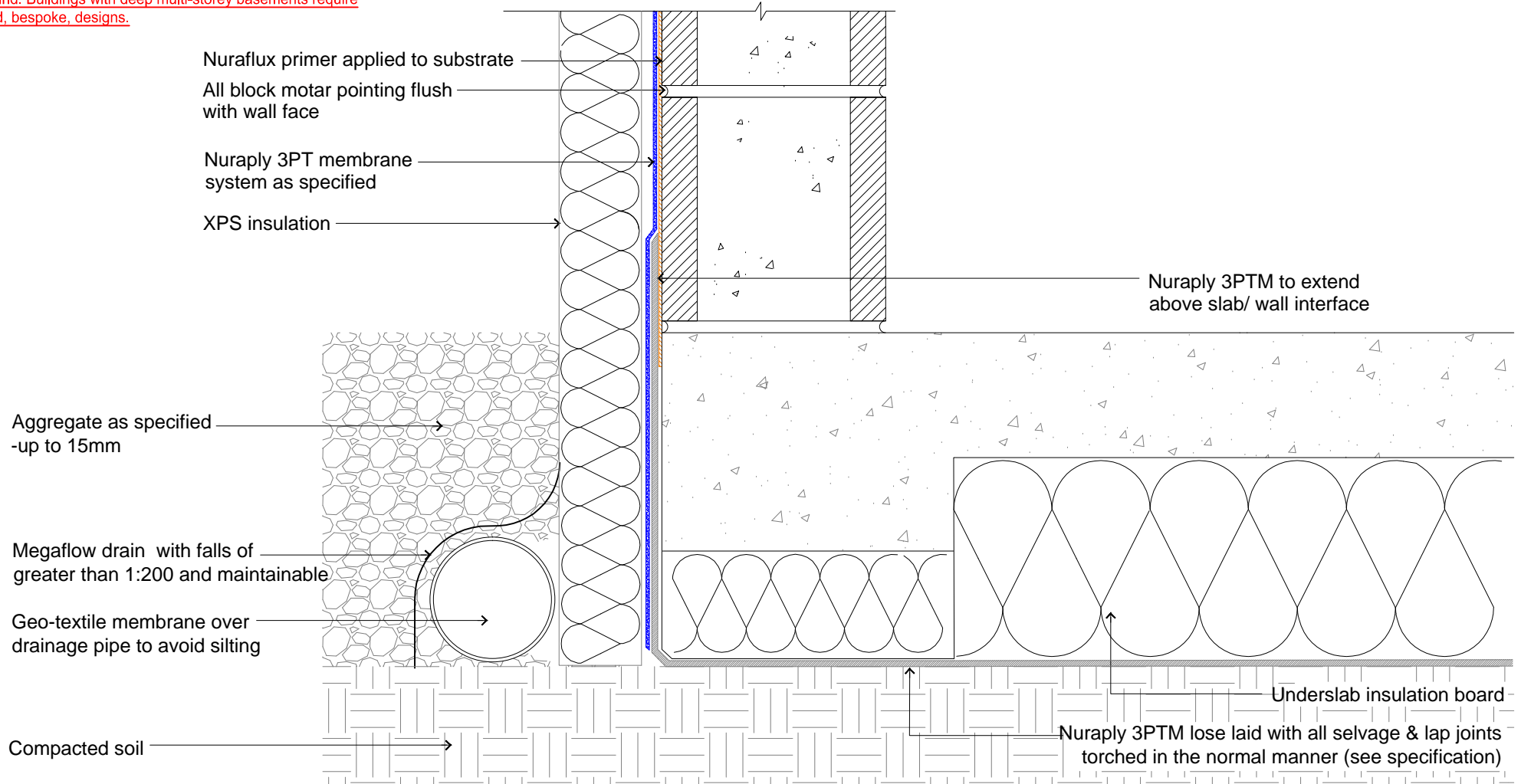
**Preparations**

All surfaces must be smooth, clean and dry. Loose material and sharp protrusions should be removed mechanically. All areas receiving torch applied membrane should be primed with Nuralite Nuraflux Primer. Allow to dry completely. The newly applied primer should be protected from contamination.

**Angles and Corners**

These should be reinforced with a 330mm wide piece of Nuraply 3PT (Reinforcing Strip) equidistant across the previously primed area. Internal and external corners should be waterproofed with Nuraply 3PT Membrane.

For waterproofing the lower storey of a building wholly or partially below ground. Buildings with deep multi-storey basements require specialized, bespoke, designs.



**Nuralite Waterproofing Ltd.**

53A Victoria Street, Onehunga,  
Auckland 1061, New Zealand  
TEL: (64) (9) 579-2046  
FAX: (64) (9) 579-5136  
email: info@nuralite.co.nz  
web: www.nuralite.co.nz

*All applications to be installed by an authorised nuralite applicator. All materials to be applied in accordance with standard published installation instruction and product data sheet should be consulted at all times. This drawing is for comment & approval it must not be used for construction until authorised by the site specifier or other relevant technical expert. This detail drawing is to be used only as a part of the nuralite specification package.*

*All drawings are subject to copyright. Unauthorised use is prohibited*  
© NURALITE WATERPROOFING Ltd.

PRODUCT:

**NURAPLY 3PT**

DESCRIPTION:

**TANKING AROUND BASEMENT FOOTING WITH FULL INSULATION**

SCALE: NTS

PREVIOUS DWG No: New

DWG No: **TCP-.B2**

REVISION: Rev F

DATE: APR 14

**THIS DRAWING IS INDICATIVE ONLY AND BY NO MEANS COMPREHENSIVE**

**NOTES:-**

All sharp edges/corners to be arrised

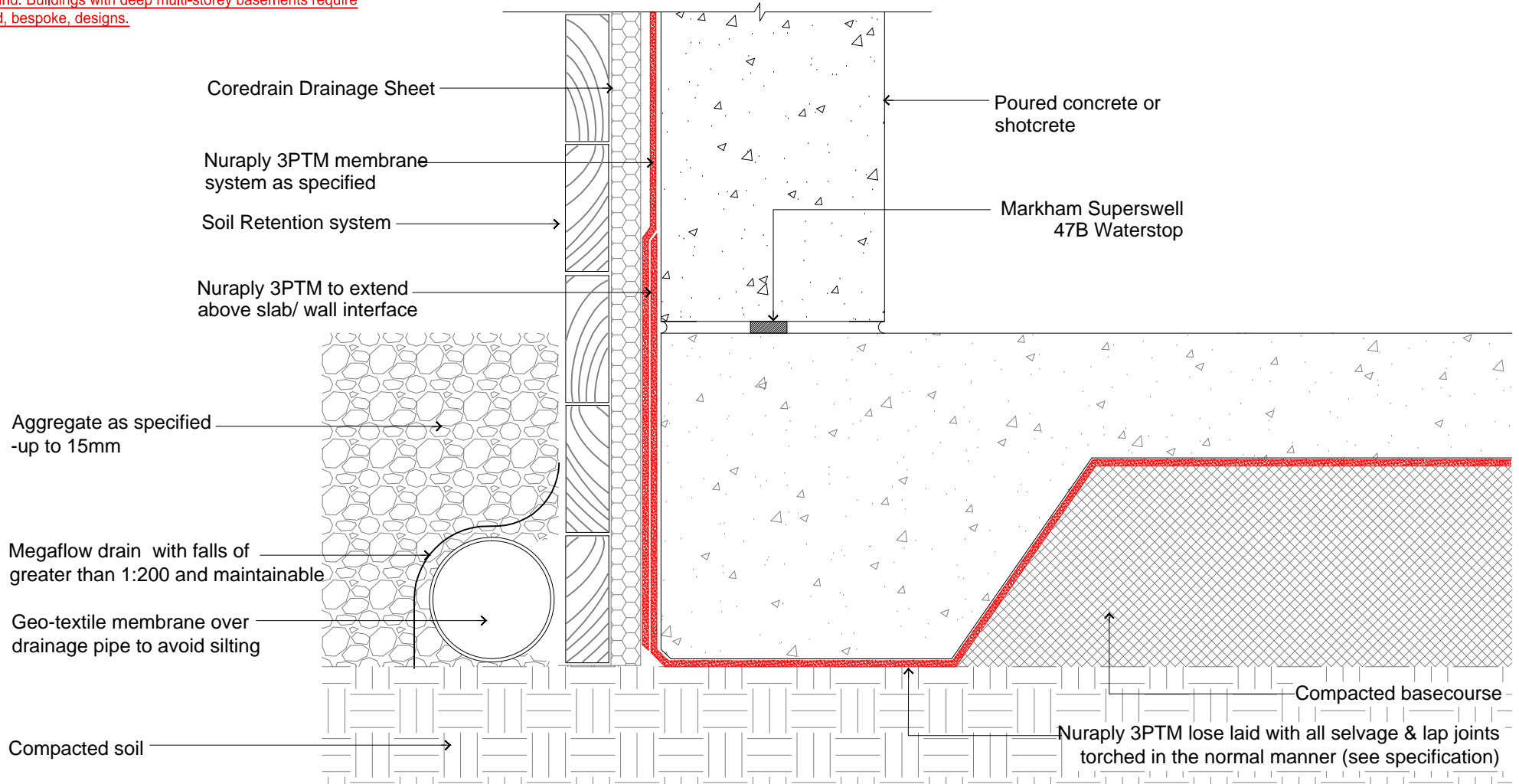
**Preparations**

All surfaces must be smooth, clean and dry. Loose material and sharp protrusions should be removed mechanically. All areas receiving torch applied membrane should be primed with Nuralite Nuraflux Primer. Allow to dry completely. The newly applied primer should be protected from contamination.

**Angles and Corners**

These should be reinforced with a 330mm wide piece of Nuraply 3PT (Reinforcing Strip) equidistant across the previously primed area. Internal and external corners should be waterproofed with Nuraply 3PT Membrane.

For waterproofing the lower storey of a building wholly or partially below ground. Buildings with deep multi-storey basements require specialized, bespoke, designs.



**Nuralite Waterproofing Ltd.**

53A Victoria Street, Onehunga,  
Auckland 1061, New Zealand  
TEL: (64) (9) 579-2046  
FAX: (64) (9) 579-5136  
email: info@nuralite.co.nz  
web: www.nuralite.co.nz

*All applications to be installed by an authorised nuralite applicator. All materials to be applied in accordance with standard published installation instruction and product data sheet should be consulted at all times. This drawing is for comment & approval it must not be used for construction until authorised by the site specifier or other relevant technical expert. This detail drawing is to be used only as a part of the nuralite specification package.*

*All drawings are subject to copyright. Unauthorised use is prohibited*  
© NURALITE WATERPROOFING Ltd.

PRODUCT:

**NURAPLY 3PM**

DESCRIPTION:

**BLINDSIDE WALL TO SLAB TIE IN**

SCALE: NTS

PREVIOUS DWG No: New

DWG No: **TCP-.B4**

REVISION: Rev F

DATE: APR 14

**THIS DRAWING IS INDICATIVE ONLY AND BY NO MEANS COMPREHENSIVE**

**NOTES:-**

All sharp edges/corners to be arrised

**Preparations**

All surfaces must be smooth, clean and dry. Loose material and sharp protrusions should be removed mechanically. All areas receiving torch applied membrane should be primed with Nuralite Nuraflux Primer. Allow to dry completely. The newly applied primer should be protected from contamination.

**Angles and Corners**

These should be reinforced with a 330mm wide piece of Nuraply 3PT (Reinforcing Strip) equidistant across the previously primed area. Internal and external corners should be waterproofed with Nuraply 3PT Membrane.

For waterproofing the lower storey of a building wholly or partially below ground. Buildings with deep multi-storey basements require specialized, bespoke, designs.

Nuraply 3PTM membrane system as specified

Nuraply 3PT

Nuraply 3PTM to extend above slab/ wall interface

Compacted soil

Precast Concrete on to 3PTM

Markham Superswell 47B Waterstop

Compacted basecourse

Nuraply 3PTM lose laid with all selvage & lap joints torched in the normal manner (see specification)



**Nuralite Waterproofing Ltd.**  
 53A Victoria Street, Onehunga,  
 Auckland 1061, New Zealand  
 TEL: (64) (9) 579-2046  
 FAX: (64) (9) 579-5136  
 email: info@nuralite.co.nz  
 web: www.nuralite.co.nz

*All applications to be installed by an authorised nuralite applicator. All materials to be applied in accordance with standard published installation instruction and product data sheet should be consulted at all times. This drawing is for comment & approval it must not be used for construction until authorised by the site specifier or other relevant technical expert. This detail drawing is to be used only as a part of the nuralite specification package.*  
 All drawings are subject to copyright. Unauthorised use is prohibited  
 © NURALITE WATERPROOFING Ltd.

PRODUCT: <b>NURAPLY 3PM</b>			
DESCRIPTION: <b>PRECAST TO TOE DETAIL</b>			
SCALE: <b>NTS</b>	PREVIOUS DWG No: <b>New</b>	DWG No: <b>TCP-.B5</b>	
REVISION: <b>Rev F</b>	DATE: <b>APR 14</b>		

**THIS DRAWING IS INDICATIVE ONLY AND BY NO MEANS COMPREHENSIVE**

**NOTES:-**

All sharp edges/corners to be arrised

**Preparations**

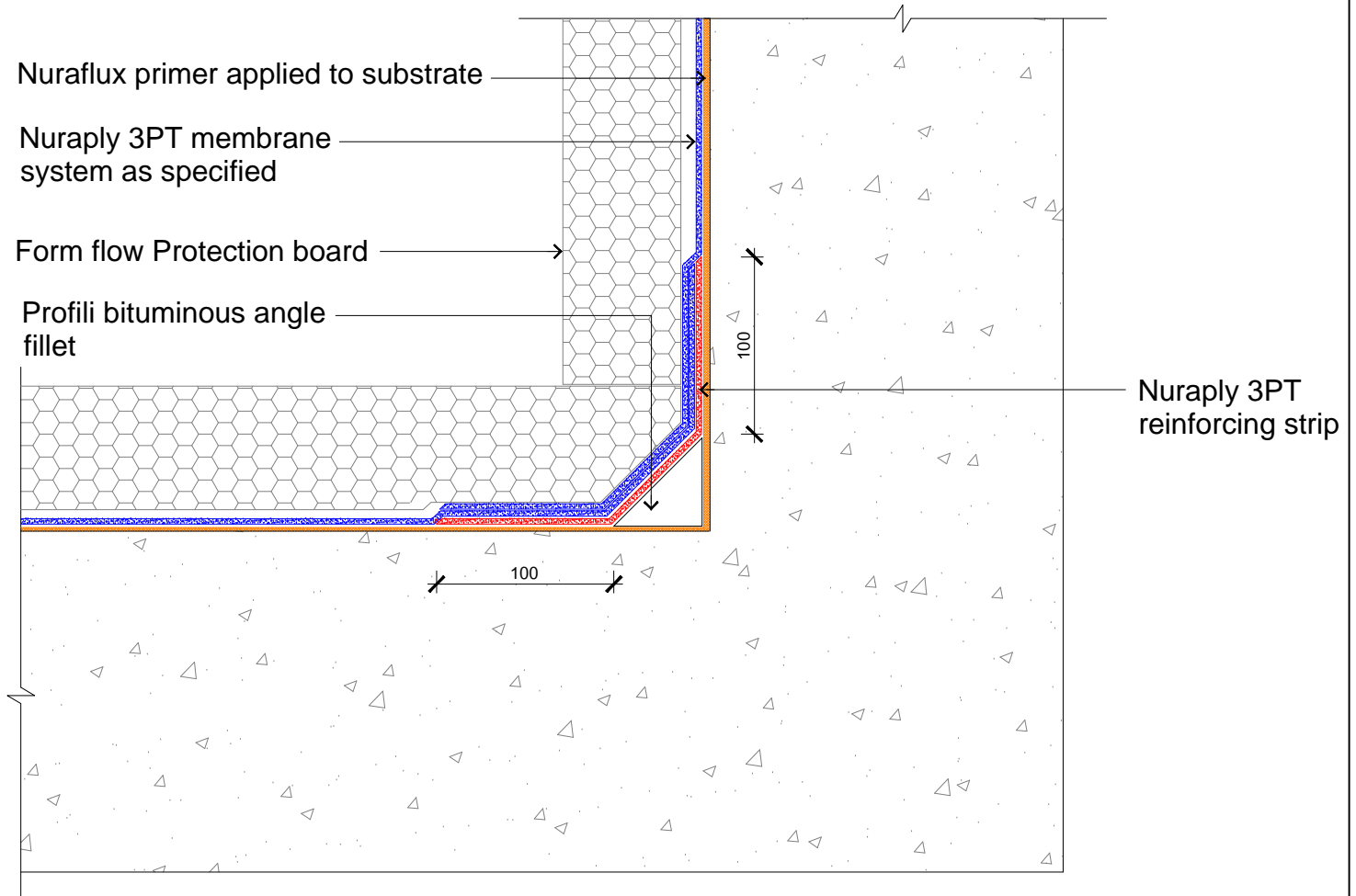
All surfaces must be smooth, clean and dry. Loose material and sharp protrusions should be removed mechanically. All areas receiving torch applied membrane should be primed with Nuralite Nuraflux Primer. Allow to dry completely. The newly applied primer should be protected from contamination.

**Angles and Corners**

These should be reinforced with a 330mm wide piece of NurAply 3PT(Reinforcing Strip) equidistant across the previously primed area. Internal and external corners should be waterproofed with Nuraply 3PT Membrane.

**PLAN VIEW**

For waterproofing the lower storey of a building wholly or partially below ground. Buildings with deep multi-storey basements require specialized, bespoke, designs.



**Nuralite Waterproofing Ltd.**



53A Victoria Street, Onehunga,  
Auckland 1061, New Zealand  
TEL: (64) (9) 579-2046  
FAX: (64) (9) 579-5136  
email: info@nuralite.co.nz  
web: www.nuralite.co.nz

*All applications to be installed by an authorised nuralite applicator. All materials to be applied in accordance with standard published installation instruction and product data sheet should be consulted at all times. This drawing is for comment & approval it must not be used for construction until authorised by the site specifier or other relevant technical expert. This detail drawing is to be used only as a part of the nuralite specification package.*  
All drawings are subject to copyright. Unauthorised use is prohibited  
© NURALITE WATERPROOFING Ltd.

PRODUCT:		<b>NURAPLY 3PT</b>	
DESCRIPTION:		INTERNAL CORNER	
SCALE:	NTS	PREVIOUS DWG No:	New
REVISION:	Rev F	DATE:	APR 14
			DWG No: <b>TCP-.C1</b>

**THIS DRAWING IS INDICATIVE ONLY AND BY NO MEANS COMPREHENSIVE**

**NOTES:-**

All sharp edges/corners to be arrised

**Preparations**

All surfaces must be smooth, clean and dry. Loose material and sharp protrusions should be removed mechanically. All areas receiving torch applied membrane should be primed with Nuralite Nuraflux Primer. Allow to dry completely. The newly applied primer should be protected from contamination.

**Angles and Corners**

These should be reinforced with a 330mm wide piece of Nuraply 3PT (Reinforcing Strip) equidistant across the previously primed area. Internal and external corners should be waterproofed with Nuraply 3PT Membrane.

**PLAN VIEW**

For waterproofing the lower storey of a building wholly or partially below ground. Buildings with deep multi-storey basements require specialized, bespoke, designs.

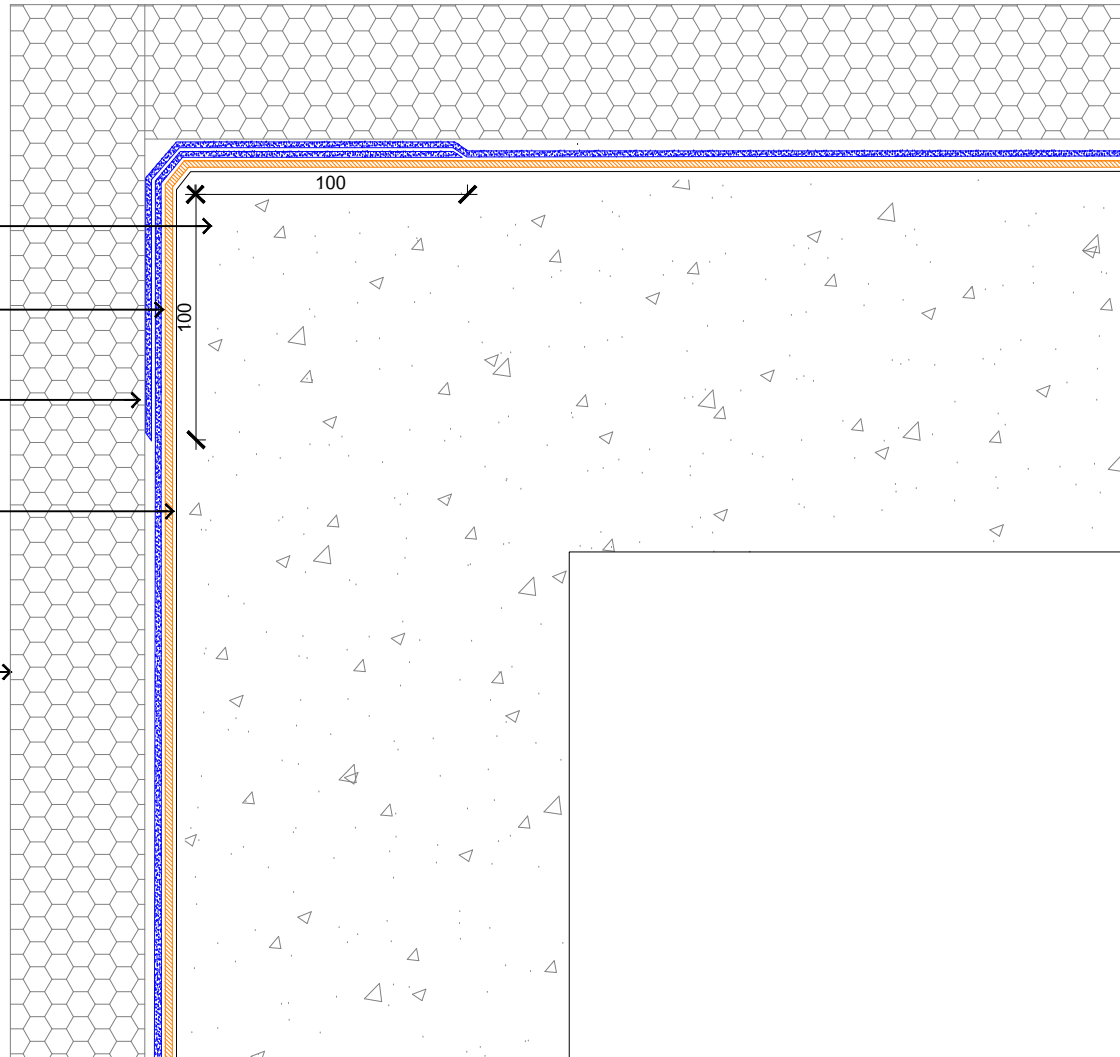
Chamfer

Nuraply 3PT reinforcing strip

Nuraply 3PT membrane system as specified

Nuraflux primer applied to substrate

Form flow Protection board



**Nuralite Waterproofing Ltd.**

53A Victoria Street, Onehunga,  
Auckland 1061, New Zealand  
TEL: (64) (9) 579-2046  
FAX: (64) (9) 579-5136  
email: info@nuralite.co.nz  
web: www.nuralite.co.nz

*All applications to be installed by an authorised nuralite applicator. All materials to be applied in accordance with standard published installation instruction and product data sheet should be consulted at all times. This drawing is for comment & approval it must not be used for construction until authorised by the site specifier or other relevant technical expert. This detail drawing is to be used only as a part of the nuralite specification package.*  
All drawings are subject to copyright. Unauthorised use is prohibited  
© NURALITE WATERPROOFING Ltd.

PRODUCT:

**NURAPLY 3PT**

DESCRIPTION:

**EXTERNAL CORNER**

SCALE: NTS  
REVISION: Rev F

PREVIOUS DWG No: New  
DATE: APR 14

DWG No: **TCP-.D1**



**THIS DRAWING IS INDICATIVE ONLY AND BY NO MEANS COMPREHENSIVE**

**NOTES:-**

All sharp edges/corners to be arrised

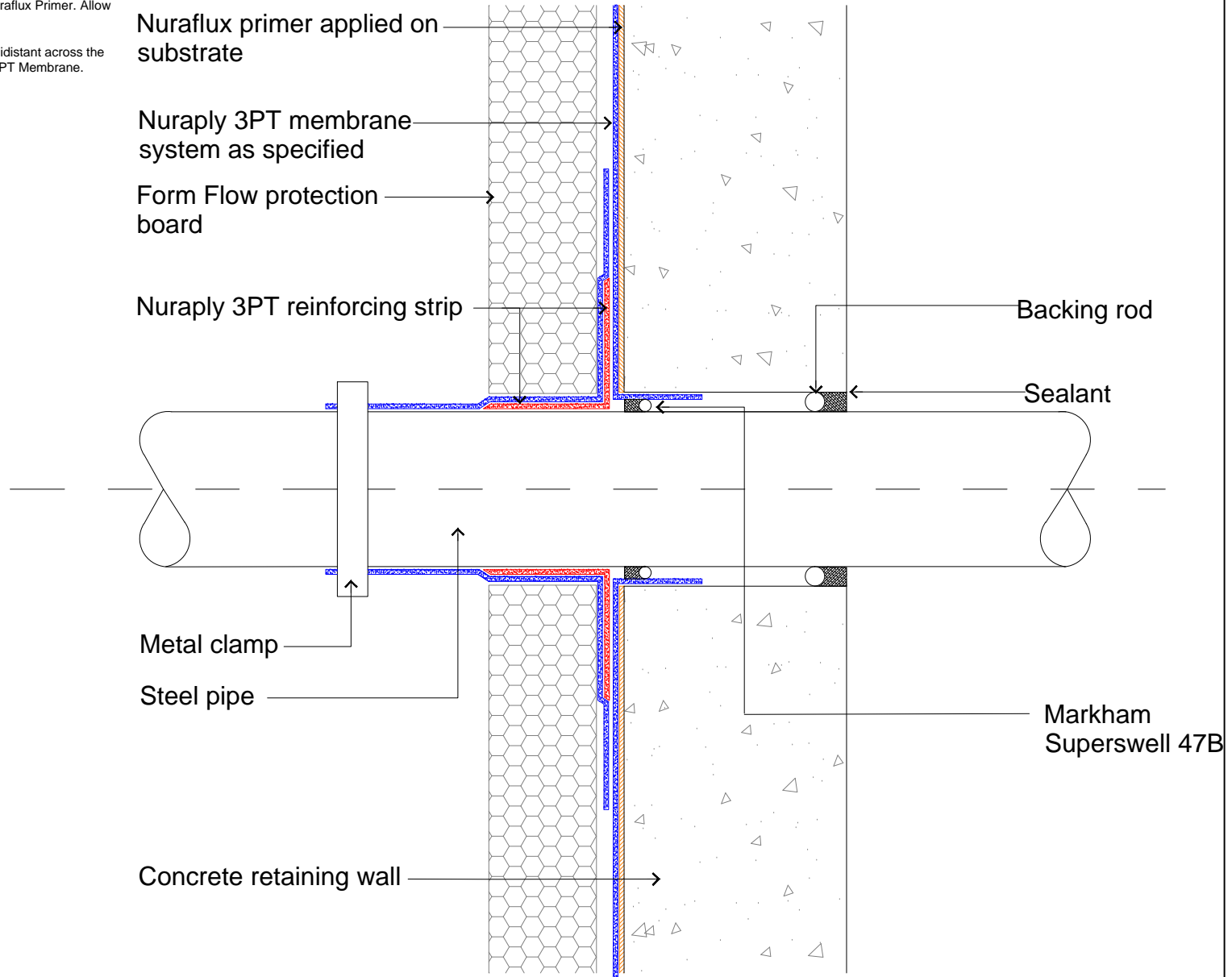
**Preparations**

All surfaces must be smooth, clean and dry. Loose material and sharp protrusions should be removed mechanically. All areas receiving torch applied membrane should be primed with Nuralite Nuraflux Primer. Allow to dry completely. The newly applied primer should be protected from contamination.

**Angles and Corners**

These should be reinforced with a 330mm wide piece of Nuraply 3PT (Reinforcing Strip) equidistant across the previously primed area. Internal and external corners should be waterproofed with Nuraply 3PT Membrane.

For waterproofing the lower storey of a building wholly or partially below ground. Buildings with deep multi-storey basements require specialized, bespoke, designs.



**Nuralite Waterproofing Ltd.**  
 53A Victoria Street, Onehunga,  
 Auckland 1061, New Zealand  
 TEL: (64) (9) 579-2046  
 FAX: (64) (9) 579-5136  
 email: info@nuralite.co.nz  
 web: www.nuralite.co.nz

*All applications to be installed by an authorised nuralite applicator. All materials to be applied in accordance with standard published installation instruction and product data sheet should be consulted at all times. This drawing is for comment & approval it must not be used for construction until authorised by the site specifier or other relevant technical expert. This detail drawing is to be used only as a part of the nuralite specification package.*  
 All drawings are subject to copyright. Unauthorised use is prohibited  
 © NURALITE WATERPROOFING Ltd.

PRODUCT: <b>NURAPLY 3PT</b>			
DESCRIPTION: <b>CONCRETE WALL PENETRATION</b>			
SCALE: <b>NTS</b>	PREVIOUS DWG No: <b>New</b>	DWG No: <b>TCP-.E1</b>	
REVISION: <b>Rev E</b>	DATE: <b>APR 14</b>		

**THIS DRAWING IS INDICATIVE ONLY AND BY NO MEANS COMPREHENSIVE**

**NOTES:-**

All sharp edges/corners to be arrised

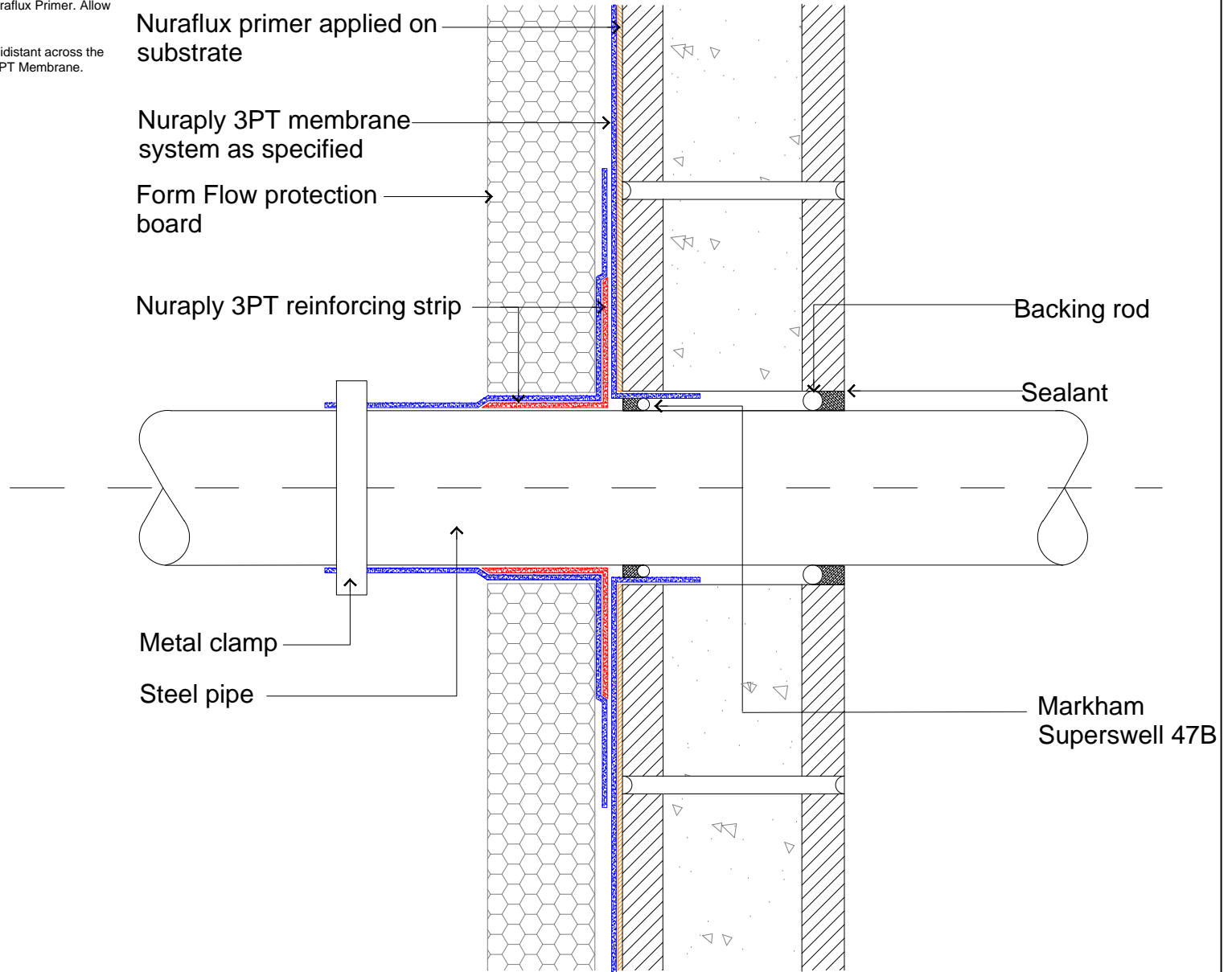
**Preparations**

All surfaces must be smooth, clean and dry. Loose material and sharp protrusions should be removed mechanically. All areas receiving torch applied membrane should be primed with Nuralite Nuraflux Primer. Allow to dry completely. The newly applied primer should be protected from contamination.

**Angles and Corners**

These should be reinforced with a 330mm wide piece of Nuraply 3PT (Reinforcing Strip) equidistant across the previously primed area. Internal and external corners should be waterproofed with Nuraply 3PT Membrane.

For waterproofing the lower storey of a building wholly or partially below ground. Buildings with deep multi-storey basements require specialized, bespoke, designs.



**Nuralite Waterproofing Ltd.**

53A Victoria Street, Onehunga,  
Auckland 1061, New Zealand  
TEL: (64) (9) 579-2046  
FAX: (64) (9) 579-5136  
email: info@nuralite.co.nz  
web: www.nuralite.co.nz

*All applications to be installed by an authorised nuralite applicator. All materials to be applied in accordance with standard published installation instruction and product data sheet should be consulted at all times. This drawing is for comment & approval it must not be used for construction until authorised by the site specifier or other relevant technical expert. This detail drawing is to be used only as a part of the nuralite specification package.*  
*All drawings are subject to copyright. Unauthorised use is prohibited*  
© NURALITE WATERPROOFING Ltd.

PRODUCT:

**NURAPLY 3PT**

DESCRIPTION:

**BLOCK WALL PENETRATION**

SCALE: NTS  
REVISION: Rev E

PREVIOUS DWG No: New  
DATE: APR 14

DWG No: **TCP-.E2**

**THIS DRAWING IS INDICATIVE ONLY AND BY NO MEANS COMPREHENSIVE**

**NOTES:-**

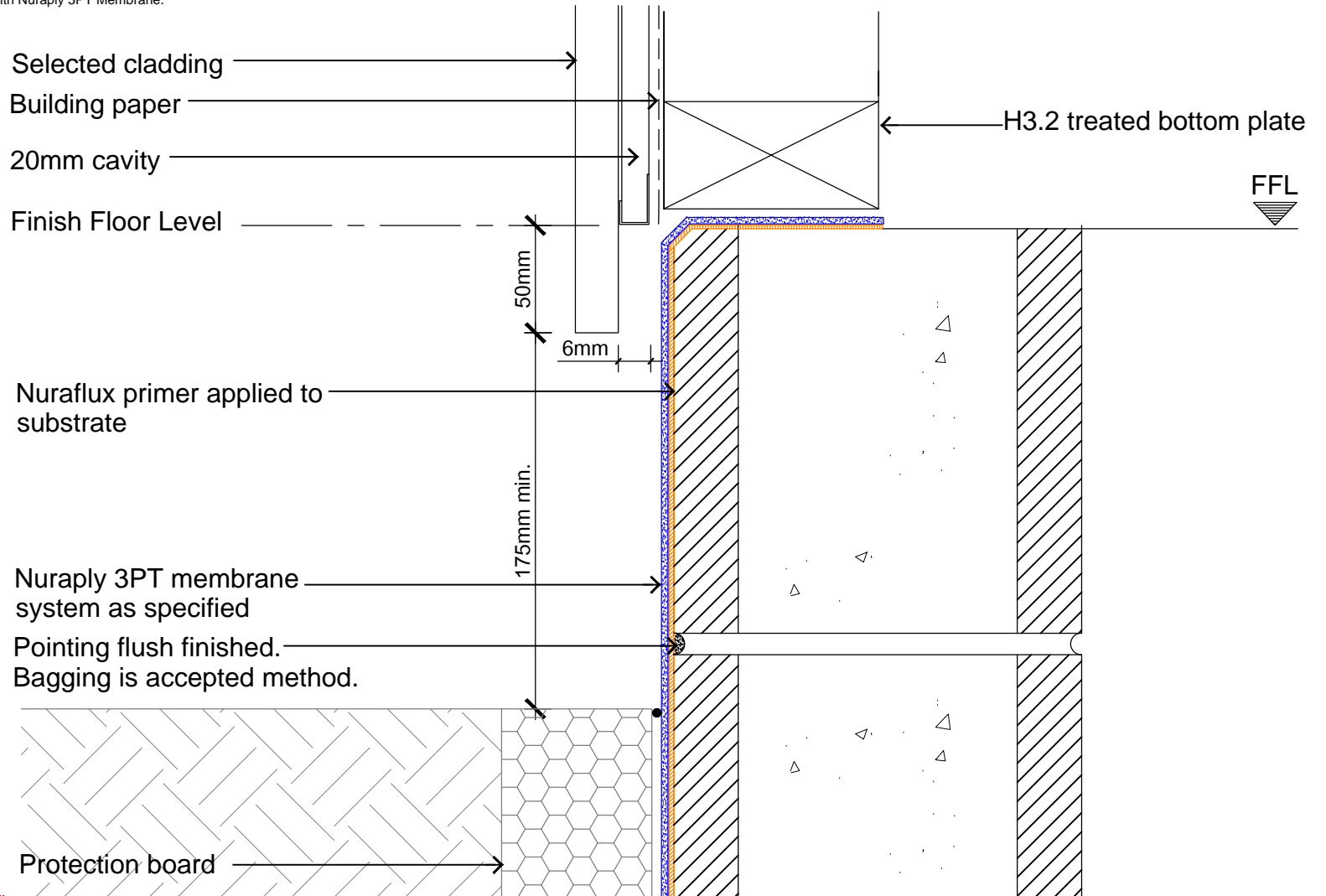
All sharp edges/corners to be arrised

**Preparations**

All surfaces must be smooth, clean and dry. Loose material and sharp protrusions should be removed mechanically. All areas receiving torch applied membrane should be primed with Nuralite Nuraflux Primer. Allow to dry completely. The newly applied primer should be protected from contamination.

**Angles and Corners**

These should be reinforced with a 330mm wide piece of Nuraply 3PT (Reinforcing Strip) equidistant across the previously primed area. Internal and external corners should be waterproofed with Nuraply 3PT Membrane.



Note:  
Nuracolour or an extra layer of 3PM applied to protect membrane from UV exposure.

Ref. figure 65 E2/AS1

For waterproofing the lower storey of a building wholly or partially below ground. Buildings with deep multi-storey basements require specialized, bespoke, designs.



**Nuralite Waterproofing Ltd.**

53A Victoria Street, Onehunga,  
Auckland 1061, New Zealand  
TEL: (64) (9) 579-2046  
FAX: (64) (9) 579-5136  
email: info@nuralite.co.nz  
web: www.nuralite.co.nz

*All applications to be installed by an authorised nuralite applicator. All materials to be applied in accordance with standard published installation instruction and product data sheet should be consulted at all times. This drawing is for comment & approval it must not be used for construction until authorised by the site specifier or other relevant technical expert. This detail drawing is to be used only as a part of the nuralite specification package.  
All drawings are subject to copyright. Unauthorised use is prohibited  
© NURALITE WATERPROOFING Ltd.*

PRODUCT:	<b>NURAPLY 3PT</b>		
DESCRIPTION:	TERMINATION UNDER BOTTOM PLATE		
SCALE:	NTS	PREVIOUS DWG No:	New
REVISION:	Rev F	DATE:	APR 14
		DWG No:	<b>TCP-.F1</b>

**THIS DRAWING IS INDICATIVE ONLY AND BY NO MEANS COMPREHENSIVE**

**NOTES:-**

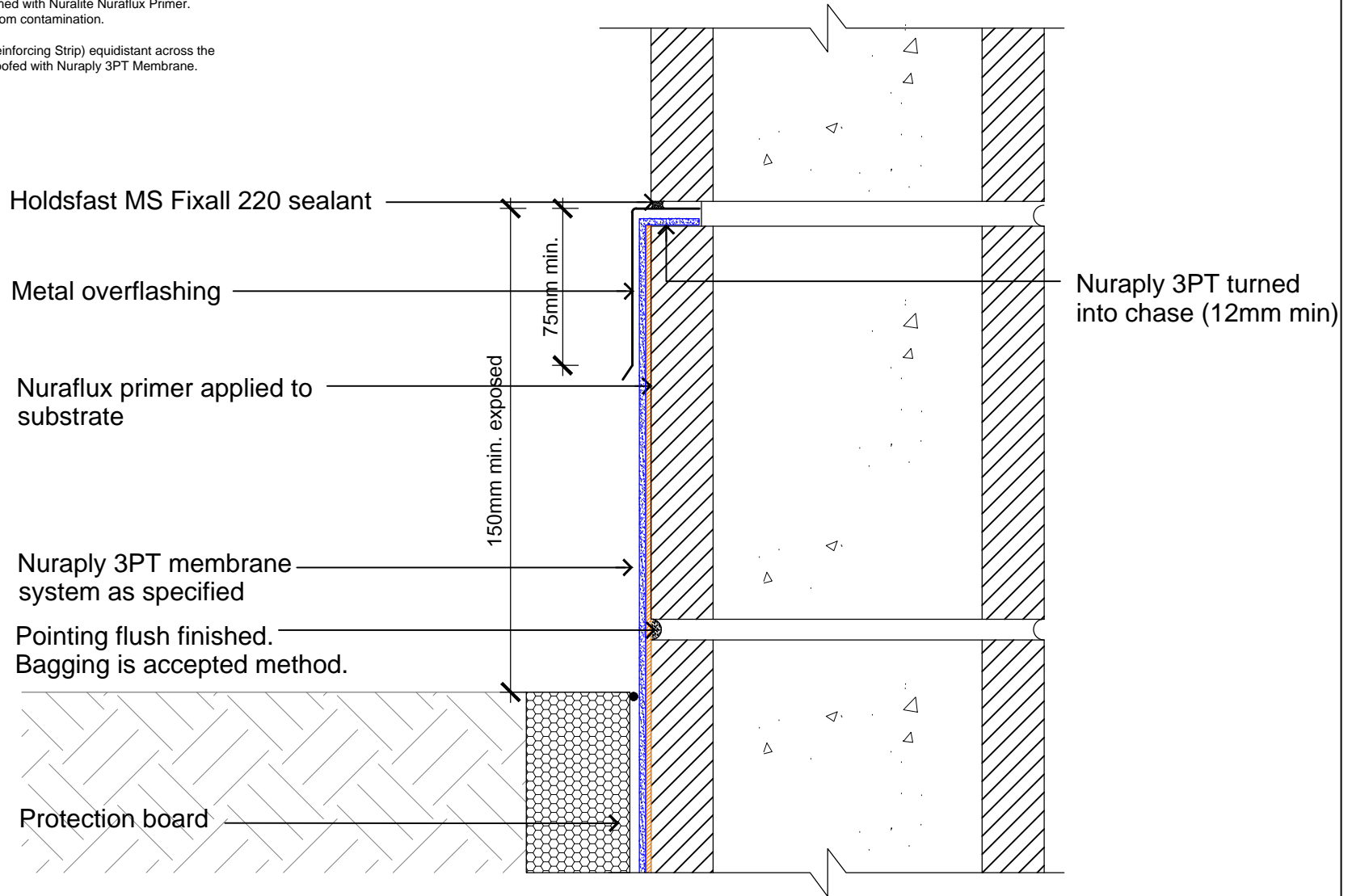
All sharp edges/corners to be arrised

**Preparations**

All surfaces must be smooth, clean and dry. Loose material and sharp protrusions should be removed mechanically. All areas receiving torch applied membrane should be primed with Nuralite Nuraflux Primer. Allow to dry completely. The newly applied primer should be protected from contamination.

**Angles and Corners**

These should be reinforced with a 330mm wide piece of Nuraply 3PT(Reinforcing Strip) equidistant across the previously primed area. Internal and external corners should be waterproofed with Nuraply 3PT Membrane.



Note:  
Nuracolour or an extra layer of 3PM applied to protect membrane from UV exposure.

**TANKING UNDER THE SLAB MUST BE CONSIDERED WHEN SLAB FFL (finished floor level) IS 300mm BELOW OUTSIDE FFL**



**Nuralite Waterproofing Ltd.**

53A Victoria Street, Onehunga,  
Auckland 1061, New Zealand  
TEL: (64) (9) 579-2046  
FAX: (64) (9) 579-5136  
email: info@nuralite.co.nz  
web: www.nuralite.co.nz

*All applications to be installed by an authorised nuralite applicator. All materials to be applied in accordance with standard published installation instruction and product data sheet should be consulted at all times. This drawing is for comment & approval it must not be used for construction until authorised by the site specifier or other relevant technical expert. This detail drawing is to be used only as a part of the nuralite specification package.*  
All drawings are subject to copyright. Unauthorised use is prohibited  
© NURALITE WATERPROOFING Ltd.

PRODUCT:

**NURAPLY 3PT**

DESCRIPTION:

TERMINATION INTO CHASE

SCALE: NTS  
REVISION: Rev F

PREVIOUS DWG No: New  
DATE: APR 14

DWG No: TCP-F2

**THIS DRAWING IS INDICATIVE ONLY AND BY NO MEANS COMPREHENSIVE**

**NOTES:-**

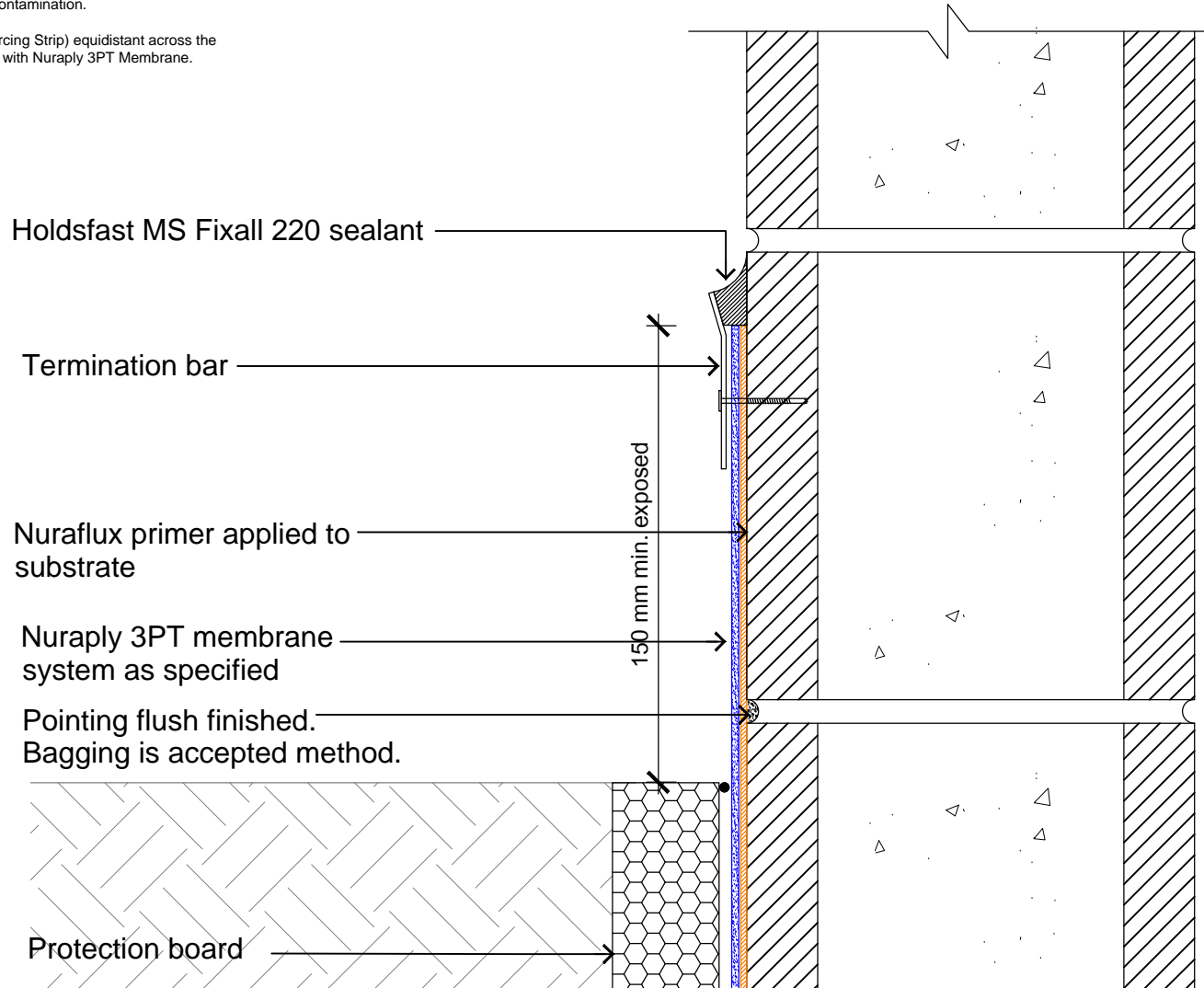
All sharp edges/corners to be arrised

**Preparations**

All surfaces must be smooth, clean and dry. Loose material and sharp protrusions should be removed mechanically. All areas receiving torch applied membrane should be primed with Nuralite Nuraflux Primer. Allow to dry completely. The newly applied primer should be protected from contamination.

**Angles and Corners**

These should be reinforced with a 330mm wide piece of Nuraply 3PT (Reinforcing Strip) equidistant across the previously primed area. Internal and external corners should be waterproofed with Nuraply 3PT Membrane.



**Note:**  
Nuracolour or and extra layer of 3PM applied to protect membrane from UV exposure.

For waterproofing the lower storey of a building wholly or partially below ground. Buildings with deep multi-storey basements require specialized, bespoke, designs.



**Nuralite Waterproofing Ltd.**

53A Victoria Street, Onehunga,  
Auckland 1061, New Zealand  
TEL: (64) (9) 579-2046  
FAX: (64) (9) 579-5136  
email: info@nuralite.co.nz  
web: www.nuralite.co.nz

*All applications to be installed by an authorised nuralite applicator. All materials to be applied in accordance with standard published installation instruction and product data sheet should be consulted at all times. This drawing is for comment & approval it must not be used for construction until authorised by the site specifier or other relevant technical expert. This detail drawing is to be used only as a part of the nuralite specification package.*  
*All drawings are subject to copyright. Unauthorised use is prohibited*  
© NURALITE WATERPROOFING Ltd.

PRODUCT:

**NURAPLY 3PT**

DESCRIPTION:

TERMINATION USING TERMINATION BAR

SCALE: NTS

PREVIOUS DWG No: New

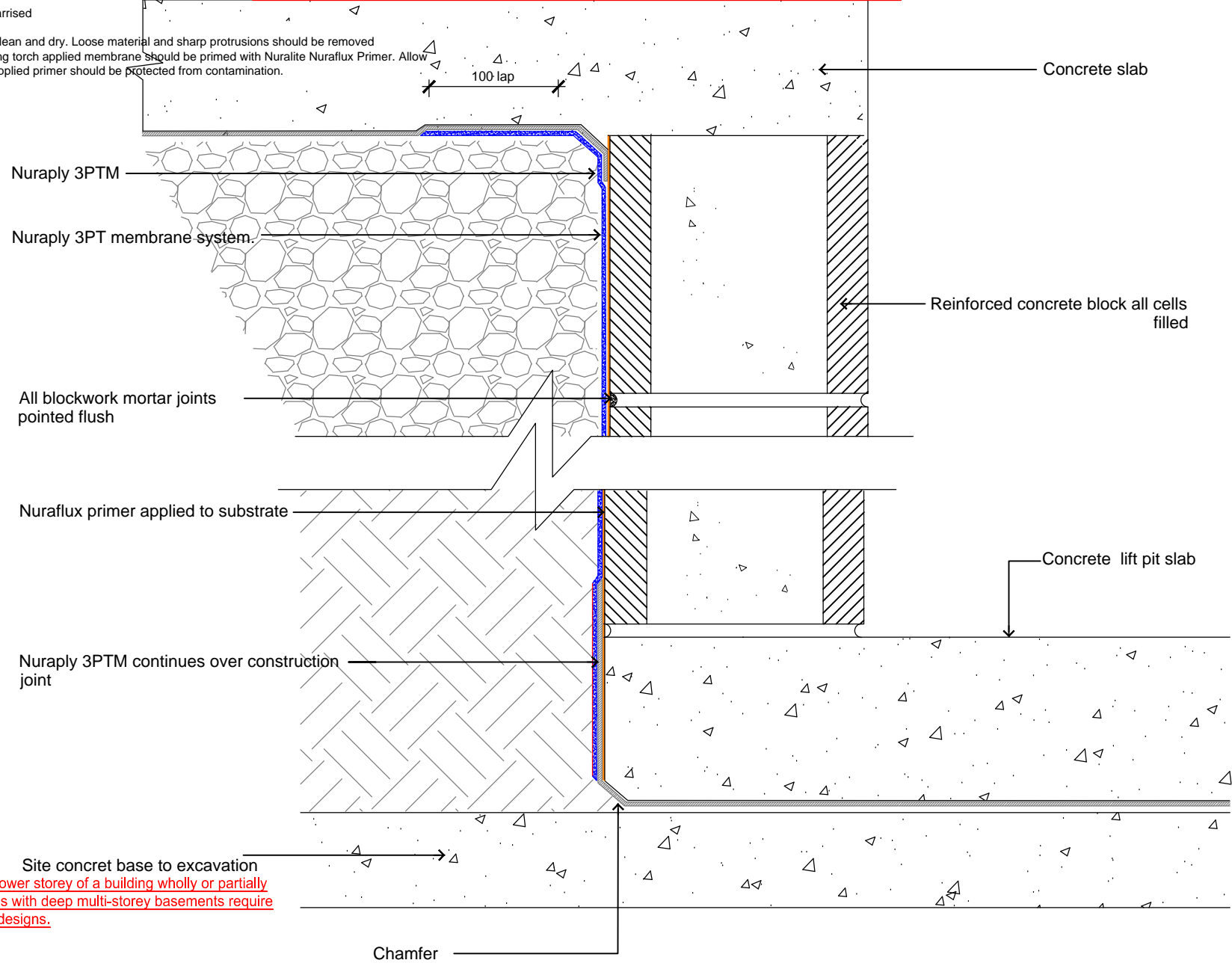
DWG No: **TCP-.F3**

REVISION: Rev F

DATE: APR 14

**THIS DRAWING IS INDICATIVE ONLY AND BY NO MEANS COMPREHENSIVE**

**NOTES:-**  
 All sharp edges/corners to be arrised  
**Preparations**  
 All surfaces must be smooth, clean and dry. Loose material and sharp protrusions should be removed mechanically. All areas receiving torch applied membrane should be primed with Nuralite Nuraflux Primer. Allow to dry completely. The newly applied primer should be protected from contamination.  
**Angles and Corners**



For waterproofing the lower storey of a building wholly or partially below ground. Buildings with deep multi-storey basements require specialized, bespoke, designs.

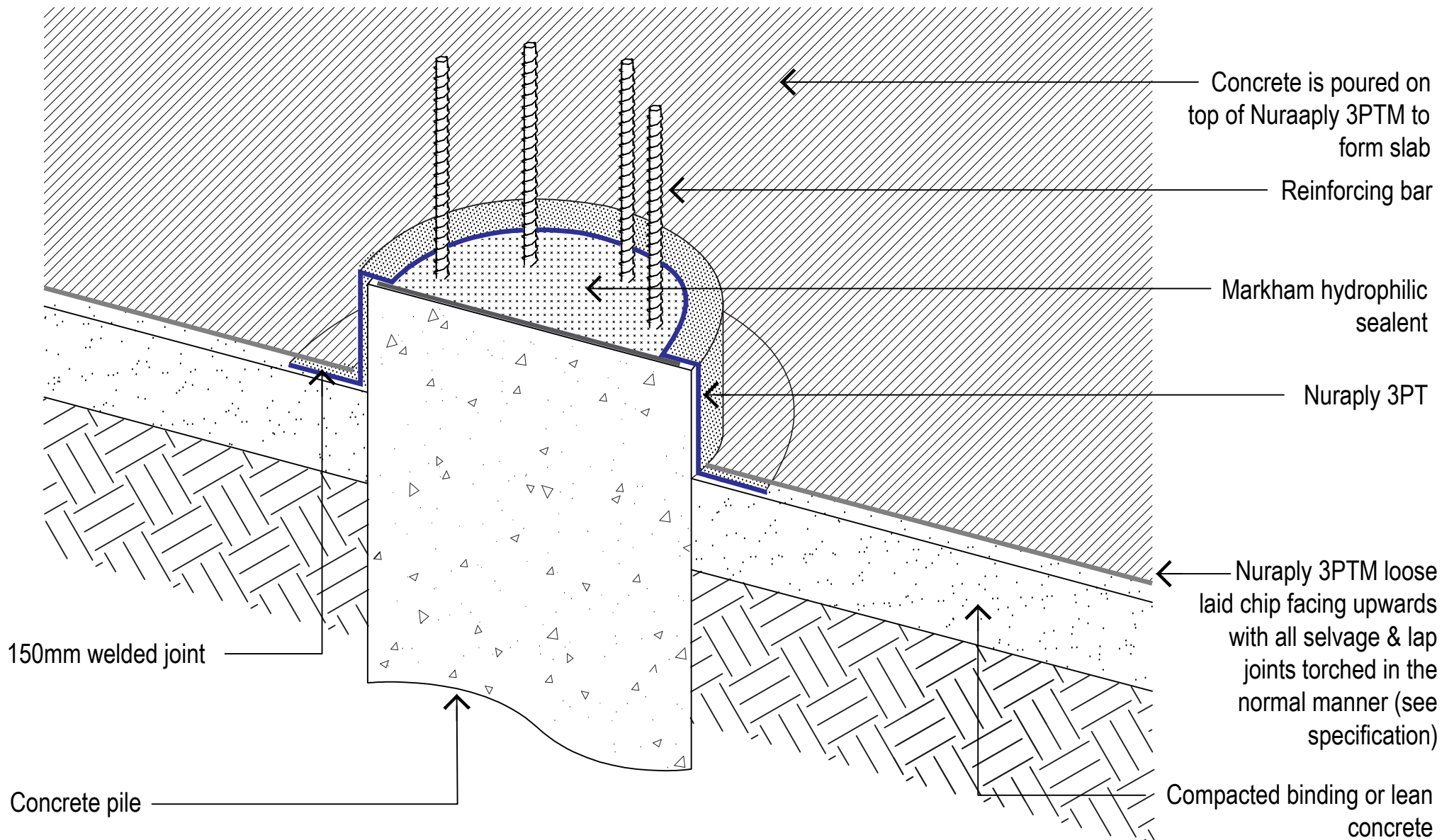


**Nuralite Waterproofing Ltd.**  
 53A Victoria Street, Onehunga,  
 Auckland 1061, New Zealand  
 TEL: (64) (9) 579-2046  
 FAX: (64) (9) 579-5136  
 email: info@nuralite.co.nz  
 web: www.nuralite.co.nz

*All applications to be installed by an authorised nuralite applicator. All materials to be applied in accordance with standard published installation instruction and product data sheet should be consulted at all times. This drawing is for comment & approval it must not be used for construction until authorised by the site specifier or other relevant technical expert. This detail drawing is to be used only as a part of the nuralite specification package.*  
 All drawings are subject to copyright. Unauthorised use is prohibited  
 © NURALITE WATERPROOFING Ltd.

PRODUCT:		<b>NURAPLY 3PTM</b>	
DESCRIPTION:		LIFT PIT	
SCALE:	NTS	PREVIOUS DWG No:	New
REVISION:	Rev E	DATE:	APR 14
			DWG No: <b>TCP-.G1</b>

**THIS DRAWING IS INDICATIVE ONLY AND BY NO MEANS COMPREHENSIVE**



**Nuralite Waterproofing Ltd.**

53A Victoria Street, Onehunga,  
Auckland 1061, New Zealand  
TEL: (64) (9) 579-2046  
FAX: (64) (9) 579-5136  
email: info@nuralite.co.nz  
web: www.nuralite.co.nz

*All applications to be installed by an authorised nuralite applicator. All materials to be applied in accordance with standard published installation instruction and product data sheet should be consulted at all times. This drawing is for comment & approval it must not be used for construction until authorised by the site specifier or other relevant technical expert. This detail drawing is to be used only as a part of the nuralite specification package.*  
All drawings are subject to copyright. Unauthorised use is prohibited  
© NURALITE WATERPROOFING Ltd.

PRODUCT:

**NURAPLY 3PTM**

DESCRIPTION:

PILE HEAD DETAIL

SCALE: NTS

PREVIOUS DWG No: New

REVISION: Rev D

DATE: APR 14

DWG No: **TCP. H1 iso**

**THIS DRAWING IS INDICATIVE ONLY AND BY NO MEANS COMPREHENSIVE**

**NOTES:-**

All sharp edges/corners to be arrised

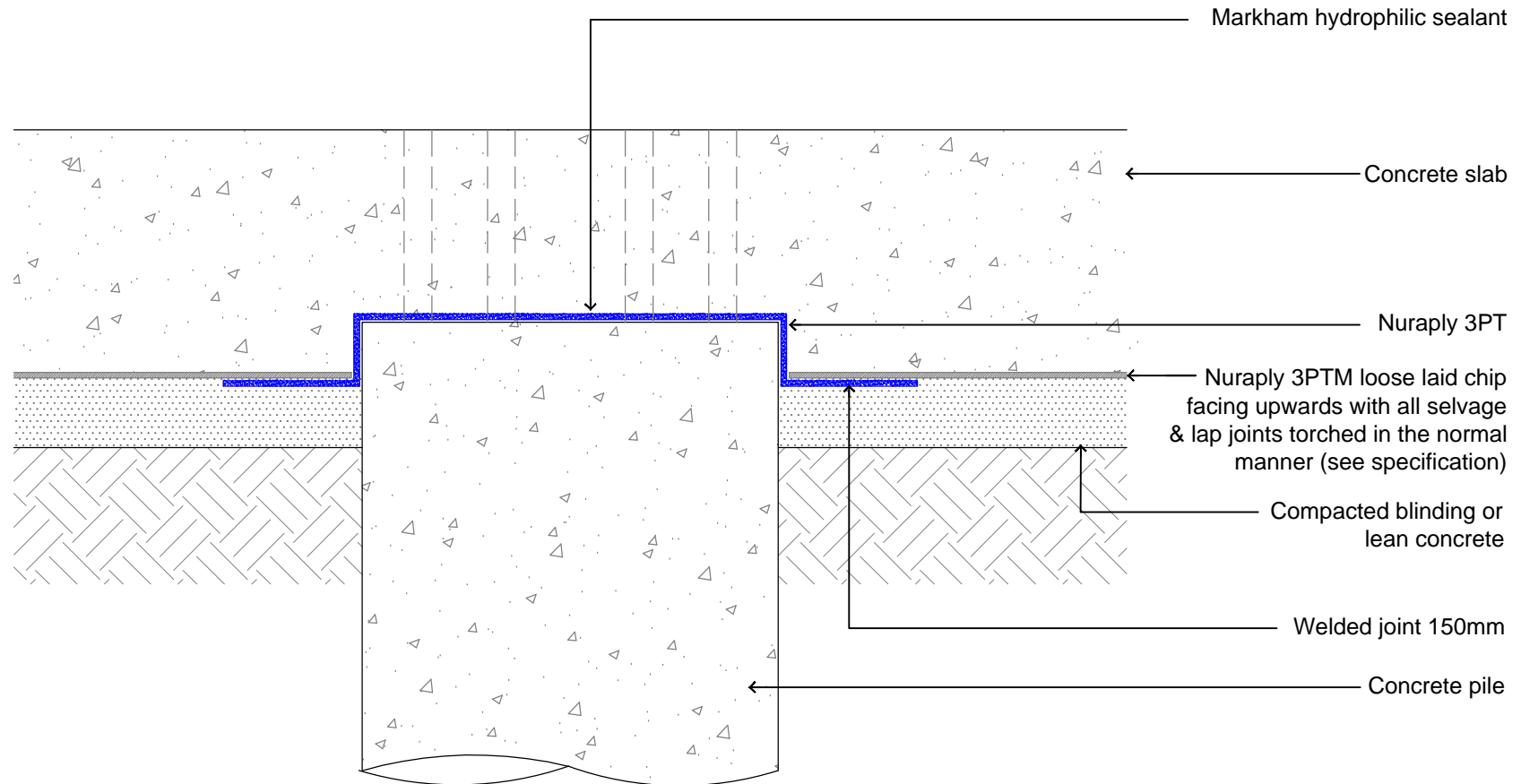
**Preparations**

All surfaces must be smooth, clean and dry. Loose material and sharp protrusions should be removed mechanically. All areas receiving torch applied membrane should be primed with Nuralite Nuraflux Primer. Allow to dry completely. The newly applied primer should be protected from contamination.

**Angles and Corners**

These should be reinforced with a 330mm wide piece of Nuraply 3PT (Reinforcing Strip) equidistant across the previously primed area. Internal and external corners should be waterproofed with Nuraply 3PT Membrane.

**TANKING UNDER THE SLAB MUST BE CONSIDERED WHEN SLAB FFL (finished floor level) IS 300mm BELOW OUTSIDE FFL**



**Nuralite Waterproofing Ltd.**

53A Victoria Street, Onehunga,  
Auckland 1061, New Zealand  
TEL: (64) (9) 579-2046  
FAX: (64) (9) 579-5136  
email: info@nuralite.co.nz  
web: www.nuralite.co.nz

*All applications to be installed by an authorised nuralite applicator. All materials to be applied in accordance with standard published installation instruction and product data sheet should be consulted at all times. This drawing is for comment & approval it must not be used for construction until authorised by the site specifier or other relevant technical expert. This detail drawing is to be used only as a part of the nuralite specification package.*  
*All drawings are subject to copyright. Unauthorised use is prohibited*  
© NURALITE WATERPROOFING Ltd.

PRODUCT:		<b>NURAPLY 3PTM</b>	
DESCRIPTION:		PILE HEAD	
SCALE:	NTS	PREVIOUS DWG No:	New
REVISION:	Rev F	DATE:	APR 14
			DWG No: <b>TCP-.H1</b>



**THIS DRAWING IS INDICATIVE ONLY AND BY NO MEANS COMPREHENSIVE**

Nuraflux Primer applied on substrate

Form Flow Protection Board

Nuraply 3PT membrane system as specified

Nuraply 3PT reinforcing strip

PLAN VIEW

Flameproof Isolating Tape

Holdfast sealant (Width greater than depth with concave finish)

Non Adherent Backing Rod

Precast Concrete Panel

100mm

20mm gap approx



**Nuralite Waterproofing Ltd.**

53A Victoria Street, Onehunga,  
Auckland 1061, New Zealand  
TEL: (64) (9) 579-2046  
FAX: (64) (9) 579-5136  
email: info@nuralite.co.nz  
web: www.nuralite.co.nz

*All applications to be installed by an authorised nuralite applicator. All materials to be applied in accordance with standard published installation instruction and product data sheet should be consulted at all times. This drawing is for comment & approval it must not be used for construction until authorised by the site specifier or other relevant technical expert. This detail drawing is to be used only as a part of the nuralite specification package.*

*All drawings are subject to copyright. Unauthorised use is prohibited*  
© NURALITE WATERPROOFING Ltd.

PRODUCT:

**NURAPLY 3PT**

DESCRIPTION:

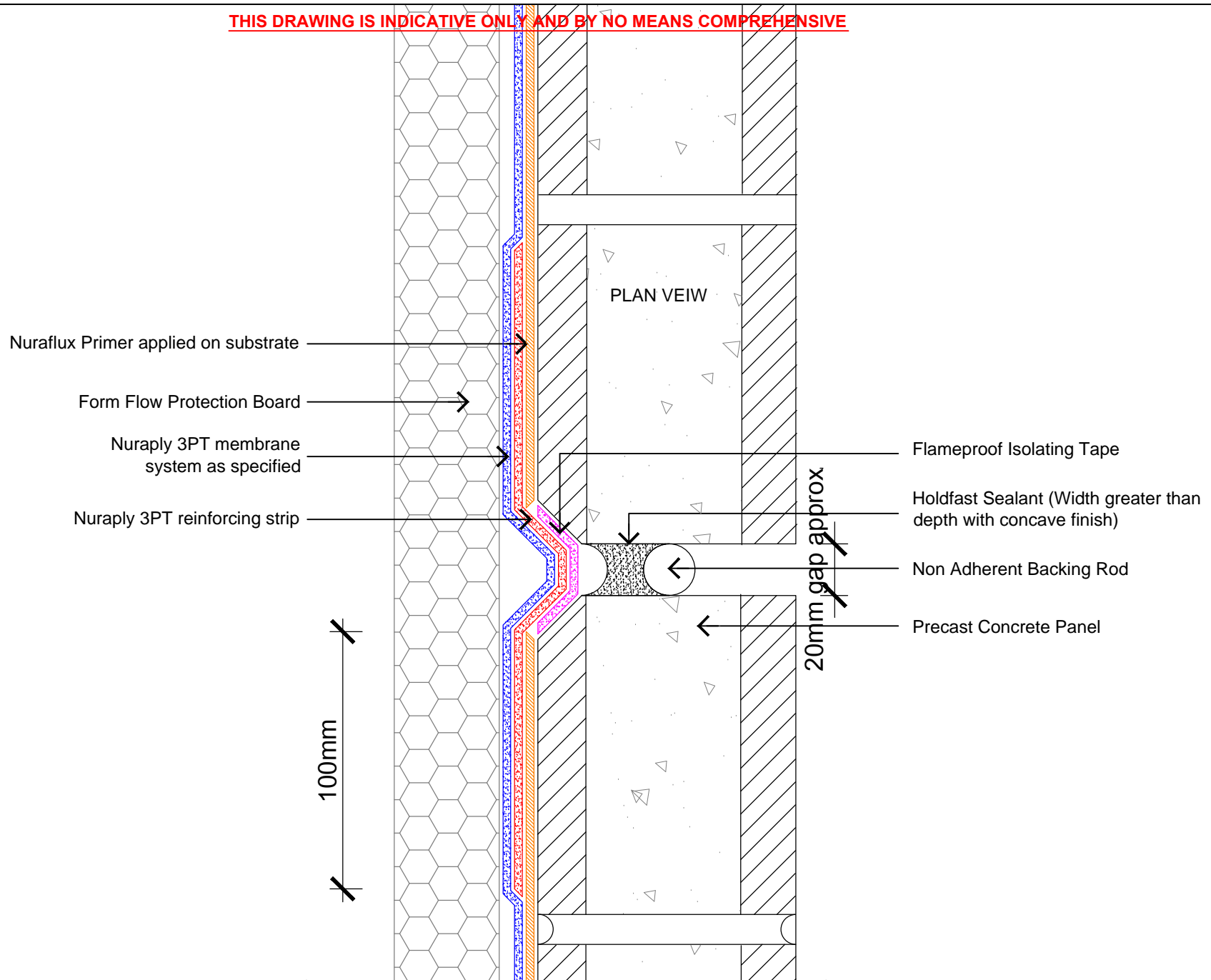
PRECAST PANEL - MINOR EXPANSION JOINT/TANKING

SCALE: NTS  
REVISION: Rev A

PREVIOUS DWG No: New  
DATE: APR 14

DWG No: **TCP-.11**

**THIS DRAWING IS INDICATIVE ONLY AND BY NO MEANS COMPREHENSIVE**



**Nuralite Waterproofing Ltd.**

53A Victoria Street, Onehunga,  
Auckland 1061, New Zealand  
TEL: (64) (9) 579-2046  
FAX: (64) (9) 579-5136  
email: info@nuralite.co.nz  
web: www.nuralite.co.nz

*All applications to be installed by an authorised nuralite applicator. All materials to be applied in accordance with standard published installation instruction and product data sheet should be consulted at all times. This drawing is for comment & approval it must not be used for construction until authorised by the site specifier or other relevant technical expert. This detail drawing is to be used only as a part of the nuralite specification package.*  
All drawings are subject to copyright. Unauthorised use is prohibited  
© NURALITE WATERPROOFING Ltd.

PRODUCT:

**NURAPLY 3PT**

DESCRIPTION:

BLOCK WALL - MINOR EXPANSION JOINT/TANKING

SCALE: NTS

PREVIOUS DWG No: New

DWG No: **TCP-.12**

REVISION: Rev A

DATE: APR 14