

# METRA<sup>®</sup>

PANEL SYSTEM

*walls · ceilings · floors*



- ▶ A ceiling product created to isolate falling-from-height issues in residential construction
- ▶ Simple, quick installation
- ▶ Safe working platform
- ▶ A weatherproof lid
- ▶ Cost effective
- ▶ BRANZ Appraised

## Falling-from-Heights issues are solved



To keep your staff, sub-contractors and tradesmen safe is the most important part of any building company's practice! With finalist placings in industry health and safety awards, the MetraCeiling has been appraised for use as ceilings in timber-framed buildings. In comparison to traditional plasterboard ceilings, the solid 7.35m x 2.45m x 25mm thick engineered wood panels replaces conventional ceiling lining and ceiling battens, and provides a rigid and flat safe working platform for builders to isolate Health and Safety issues on site. The completed ceiling provides a rated 'work platform' brace over the entire footprint with no catchment needed underneath.

Installed by Licensed Metrapanel Installers located throughout New Zealand, the safe working platform system comprises of separate panels supported by pre-certified scaffolding posts (props) along the edge and centre of each panel. Free edges of the panel are attached to existing wall framing to give rigidity to the platform, prior to the installation of roof trusses. Specifically engineered and certified Live Edge Protection Barriers are used with the ceiling system to further enhance safety.

With ceiling panels installed over walls and fixed to top plates, a bracing element is created and the ceiling acts as an effective diaphragm up to 12m long, preventing any twisting or warping. As ceiling fixings are not required from inside the house, nail popping is prevented and stopping reduced, there is no wastage, and large roof cavities can be used as storage space which is safe to walk on.

Primer sealed for moisture resistance up to 28 days, MetraCeiling acts as a weather tight lid to work under in varying conditions – as soon as wrap is installed, the frames can begin the drying process even before the roof is on.



## Metrapanel system trusted for over 25 years

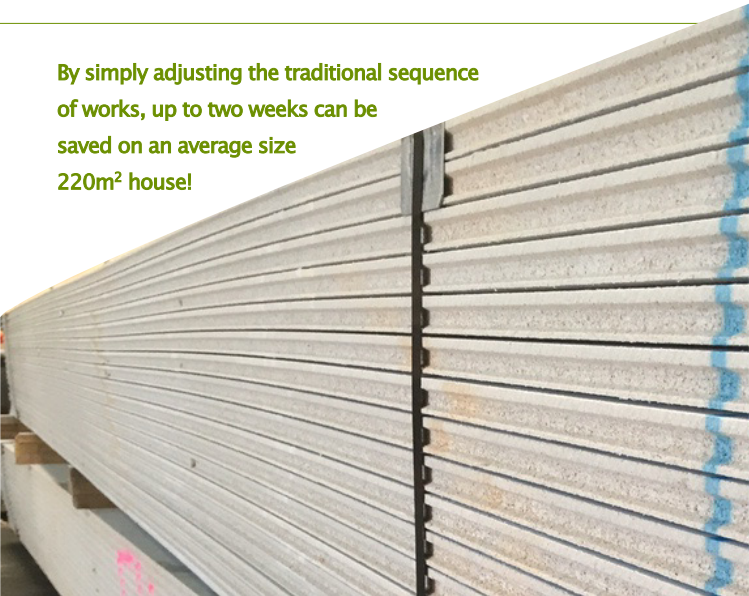
Trusted by kiwi's for over 25 years, Metrapanel has been the preferred modular panel housing system for over 9,000 projects across the residential, commercial and retirement sectors. Pre-cut to simplify and speed up construction, Metrapanel is the robust, durable and energy efficient alternative.

Engineered walls, floors and ceiling panels are pre-cut and constructed onsite by Licensed Installers throughout New Zealand. The 7.35m wood panels means there is less jointing than traditional timber-framing and plasterboard systems, therefore providing smooth, strong and durable walls, and resulting in extensive cost maintenance savings over time. Holding strong relationships with Strategic Partners; LaminexNZ, Resene, BRANZ, PrefabNZ, Lifemark, and NZGBC, the Metrapanel system is the sensible solution for investment properties, multi-unit complexes, classrooms, retirement villages and social housing.

"With the combined expertise of LaminexNZ manufacturing, and the Metrapanel passion and vision for building construction, this provides New Zealand with an innovative panel construction system perfect for modular homes."

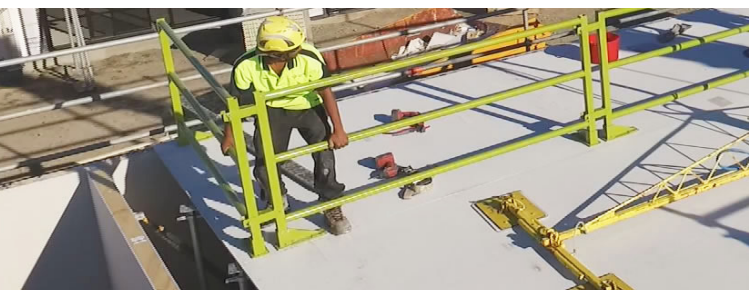
Richard Pollington, previous General Manager, LaminexNZ

**By simply adjusting the traditional sequence of works, up to two weeks can be saved on an average size 220m<sup>2</sup> house!**



## KEY FEATURES

- MetraCeilings are suitable for most ceiling configurations and use in buildings in all Wind Zones up to Very High
- Durability and impact resistance with 640kg/m<sup>3</sup> density
- The panel joints are all tongue and grooved, and are glued along the entire length
- Above all joints a 50mm steel ribbon plate is glued and screwed which provides a remarkably strong joint
- The need for ceiling battens and a second top plate is eliminated
- Roof trusses are fitted and clipped to MetraCeiling from above, no ceiling fixings are required from inside the house
- The ability to have a modern square stopped look, or a more traditional look with the use of scotia
- Aluminium negative detail extrusions can be used to create a plaster free ceiling
- Provides time and cost savings with reduced trade hours and material requirements
- MetraCeiling becomes a component of the building, there are no extra health and safety costs
- Stopping is similar to Gib but approx. 30% less due to the panel size. The panel joints can be tapered to allow plastering using conventional materials before the application of internal finishes
- There are no issues as to where light fittings need to be positioned as a batten does not need to be found to screw into
- At 15kg/m<sup>2</sup>, the weight of Metrapanel does not affect the trusses and standard pre-nail trusses cope with this load
- Install batts from above rather than fighting with them overhead
- Electricians simply drill from below and plumbers have the benefit of being able to walk across the ceiling for their first fix



## METRA CEILINGS IN COMPARISON TO ALTERNATIVES

### Safety nets

A complex system that requires the correct sag and fall height to be calculated correctly makes the product very difficult to install. A timely installation process with individual nets needed for separate rooms and regular inspections are necessary. Safety nets are hired and reused, and are therefore an extra cost to the building structure itself. Delays often occur due to safety nets being installed prior to the roof trusses and then removed on installation of the roof cladding.

### Fall Breakers

Daily inspections are required to ensure drain holes are not blocked which results in a catchment of water becoming heavy and potentially distorting the frame. The product cannot be used as a work surface for resting tools on, let alone walking across. Fall Breakers should be used within six months of receiving and need to be cut off and disposed of afterwards, as they cannot be incorporated into the building structure.

---

### Seamless '5 STEP' process

1. Using the MetraCeiling system couldn't be easier – our ceiling Installer uses your floorplan to provide a fixed price quote within 24 hours of receiving your enquiry.
2. The Installer collaborates with designers and councils to amend plans where necessary and have all technical information required to hand.
3. Once the order is placed and installation dates confirmed, the ceiling will be installed in one working day.
4. Temporary props are left in place until the roof is fixed (standard ten day period after which hire charges apply) at which point the Installer returns to site and removes them, allowing for ease of access throughout the building.





**[metrapanel.co.nz](http://metrapanel.co.nz) 0800 156 100**