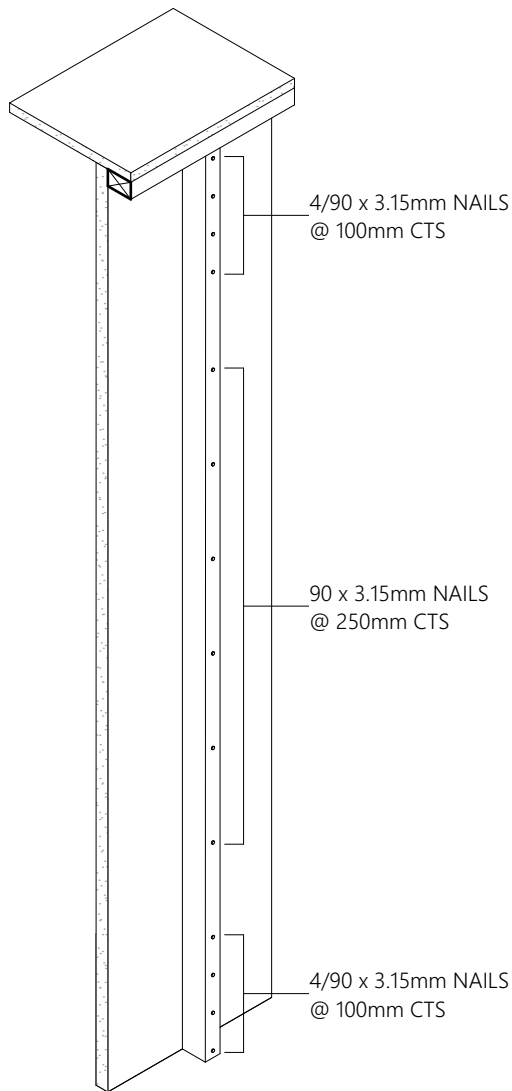
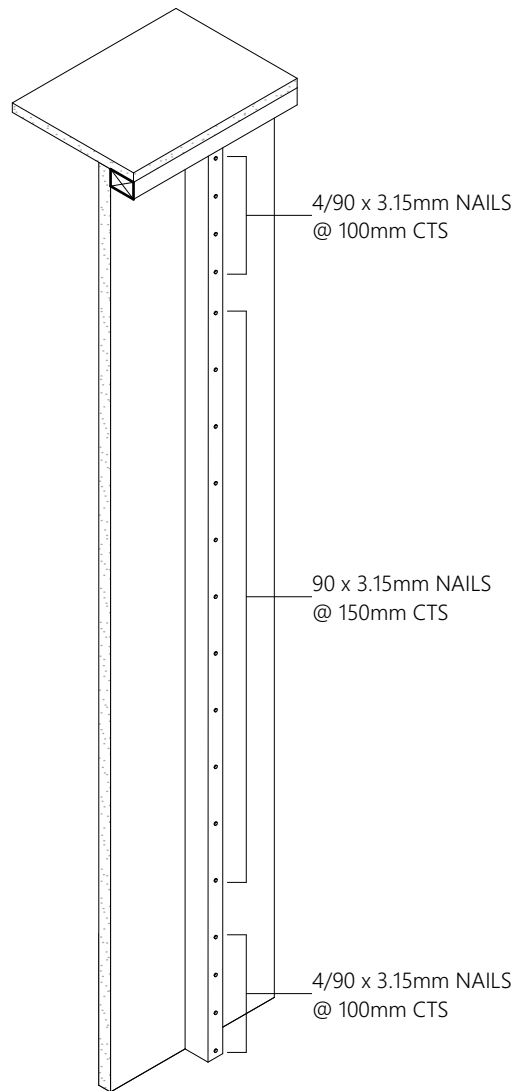
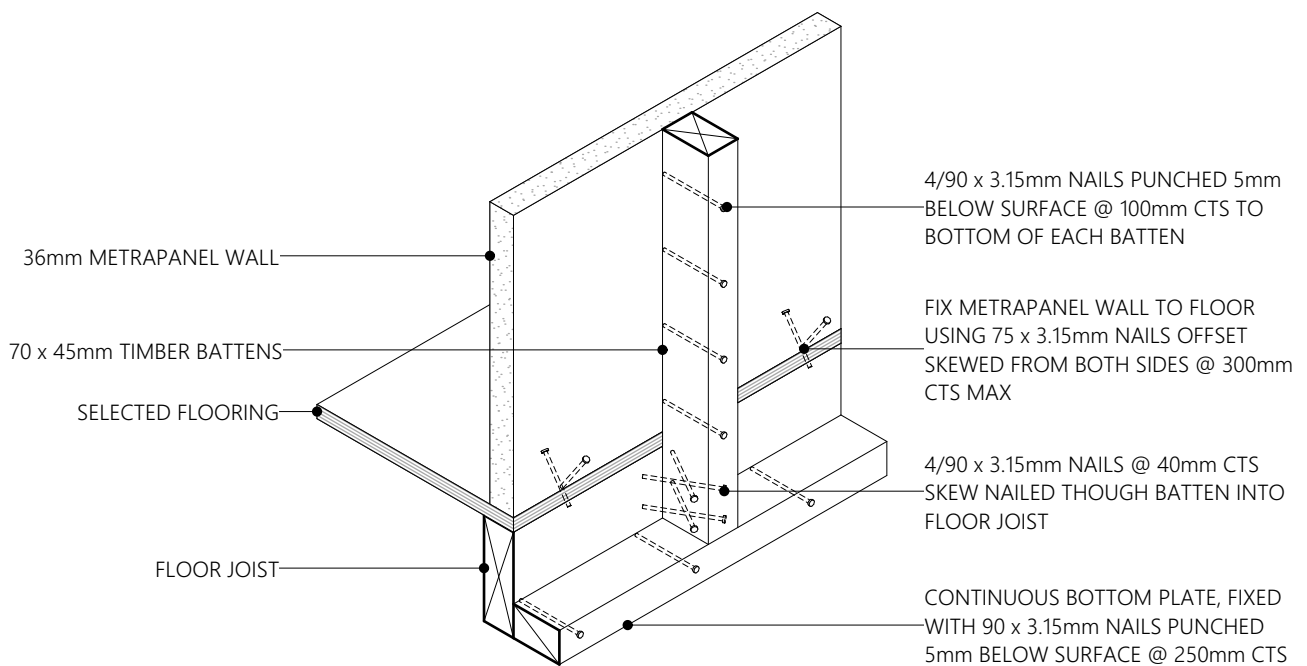


NAIL SPACING FOR LOW & MEDIUM WIND ZONES

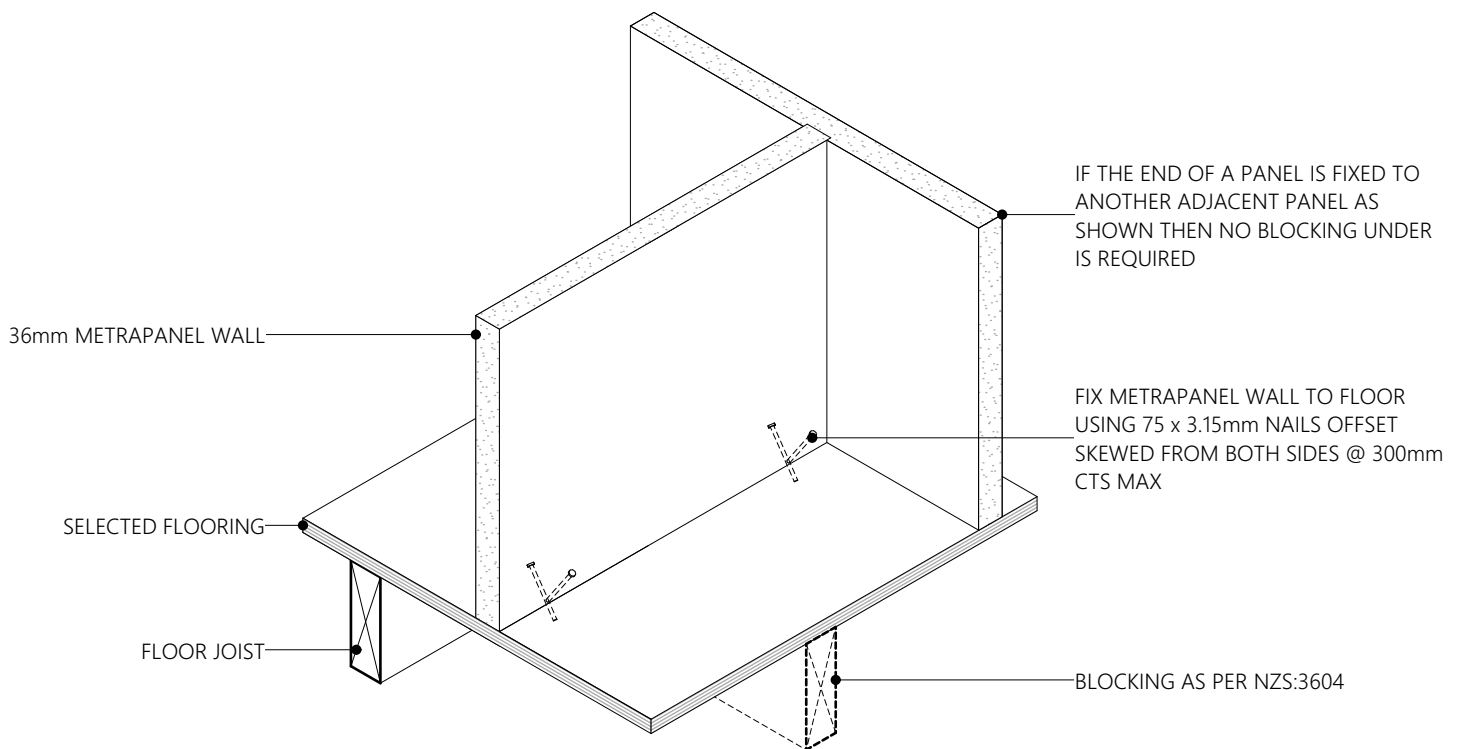


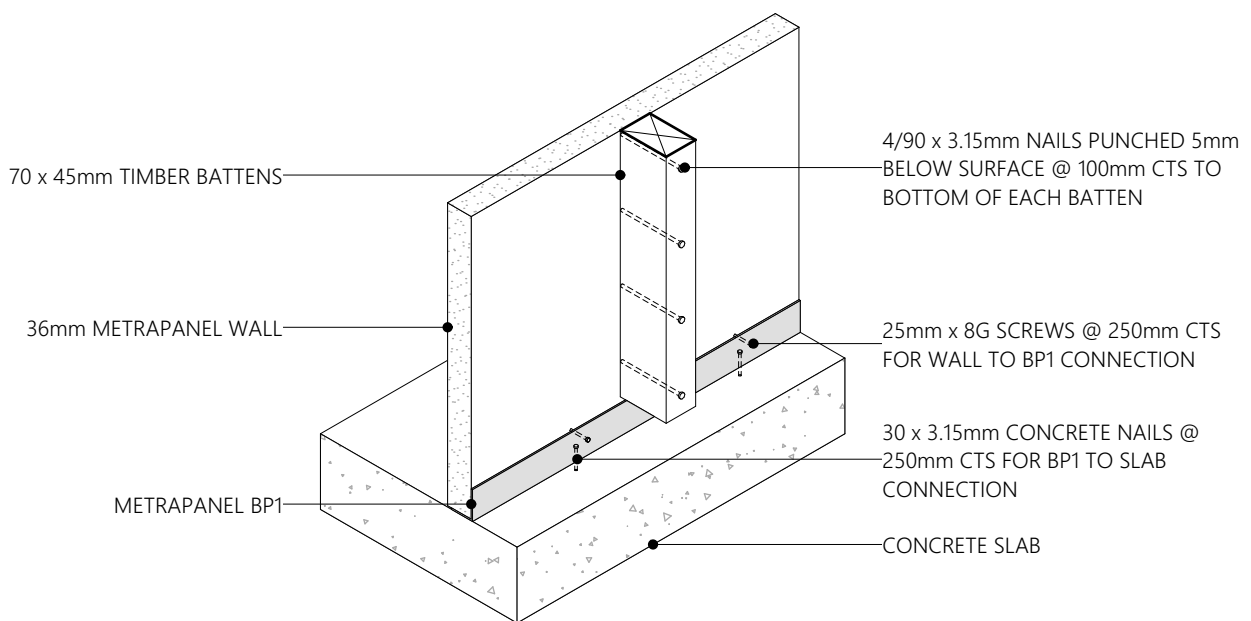
NAIL SPACING FOR HIGH & VERY HIGH WIND ZONES



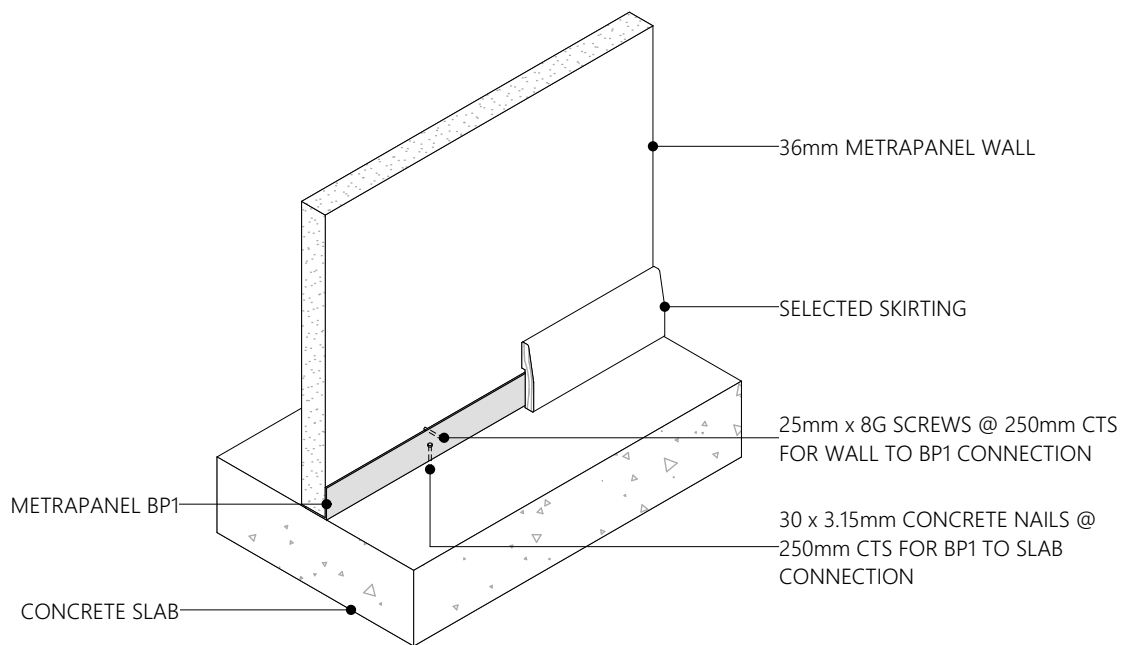


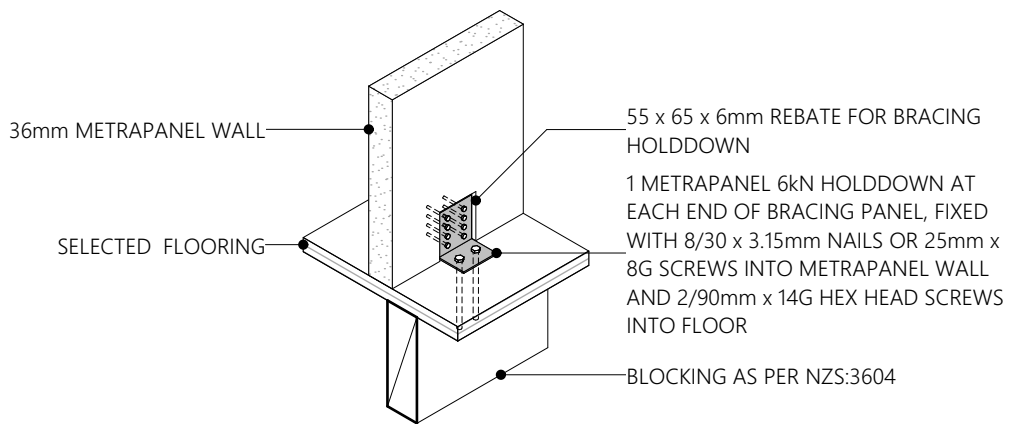
INSULATION, BUILDING WRAP, CAVITY BATTENS
& CLADDING OMITTED FOR CLARITY



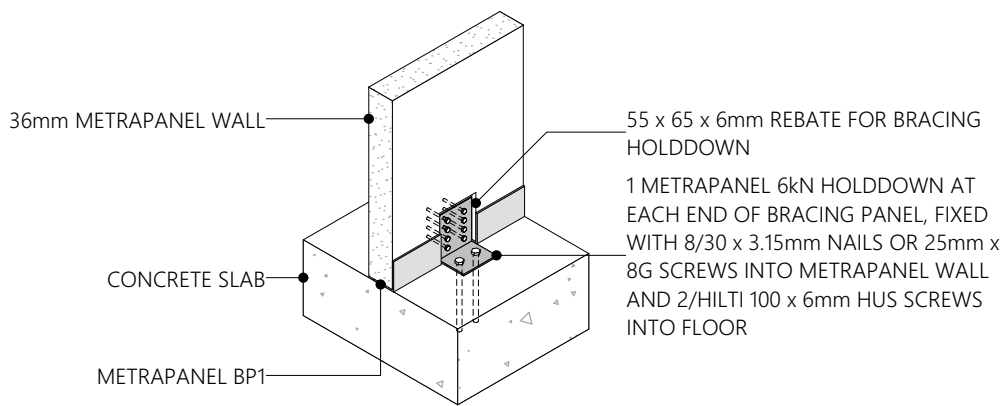


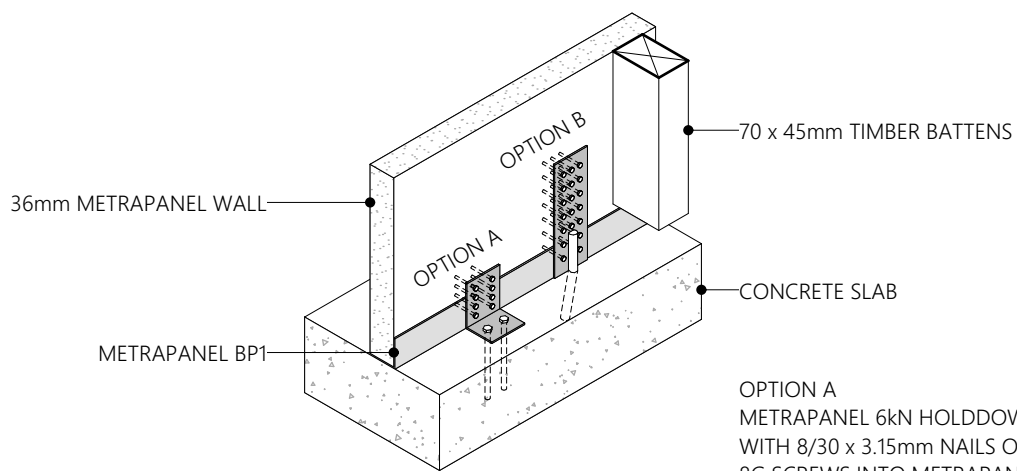
INSULATION, BUILDING WRAP, CAVITY BATTENS
& CLADDING OMITTED FOR CLARITY





SKIRTING AND WALL FIXINGS OMITTED FOR CLARITY

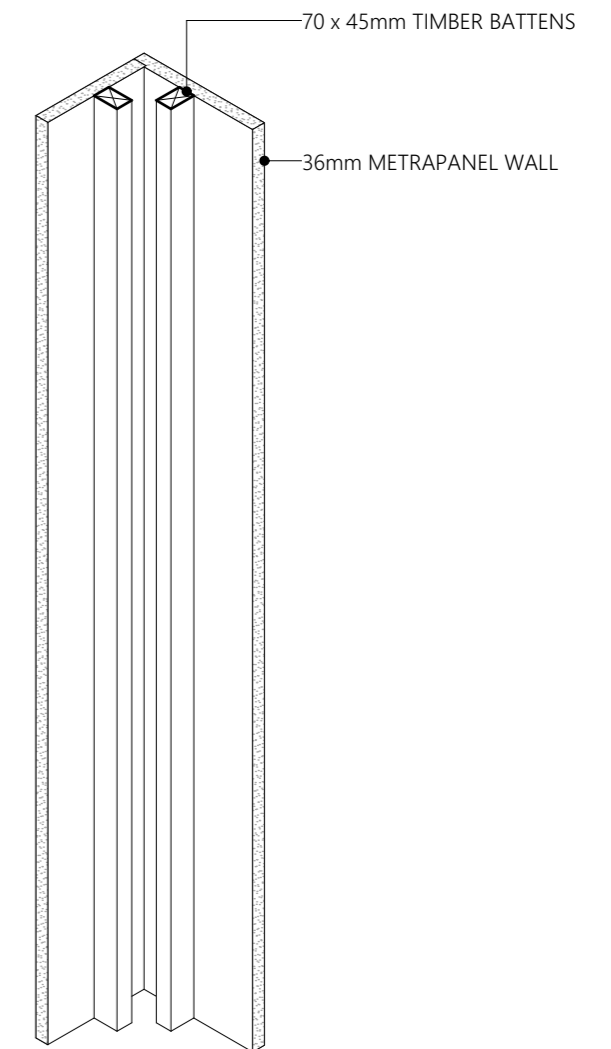
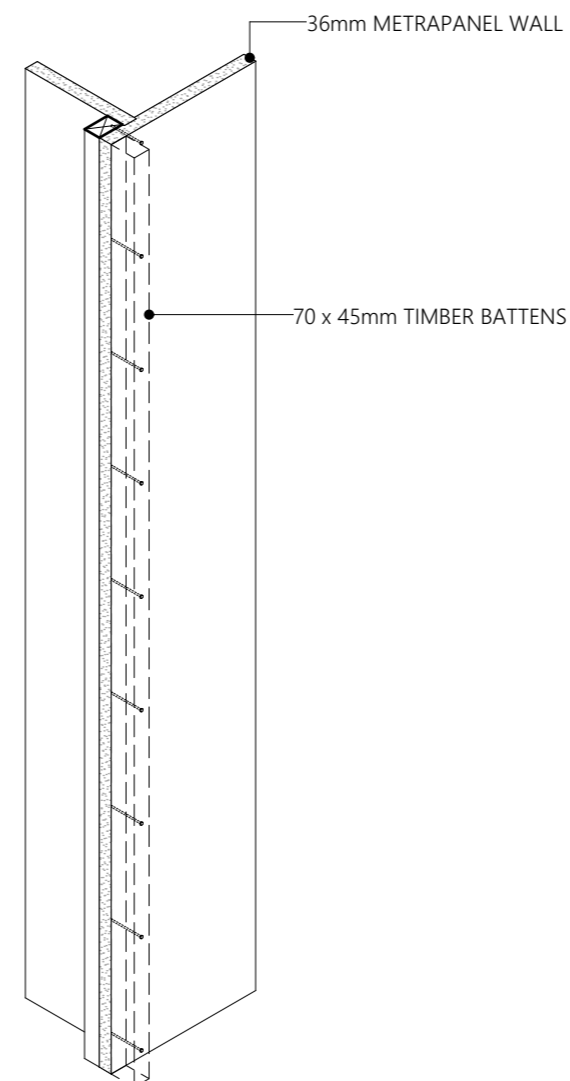
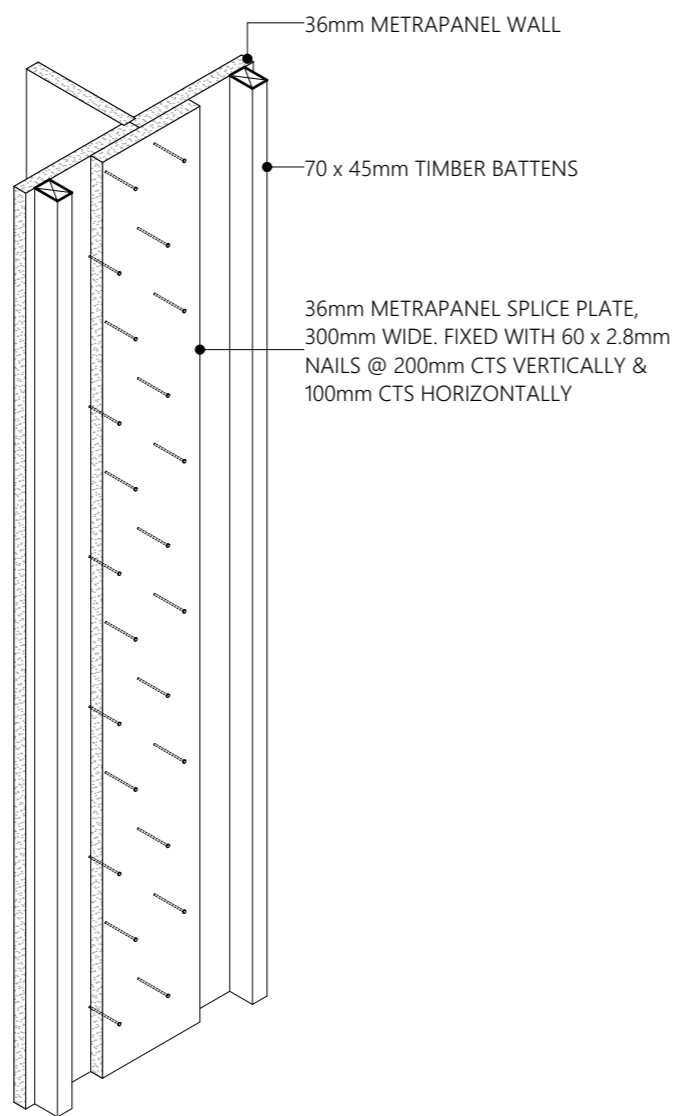
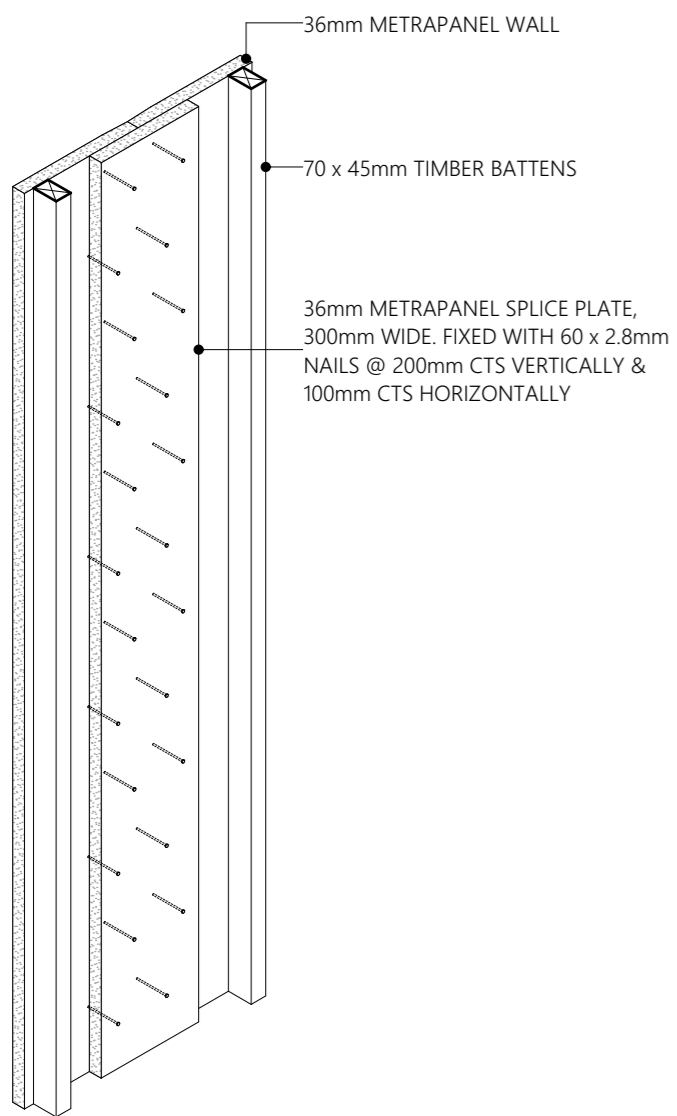
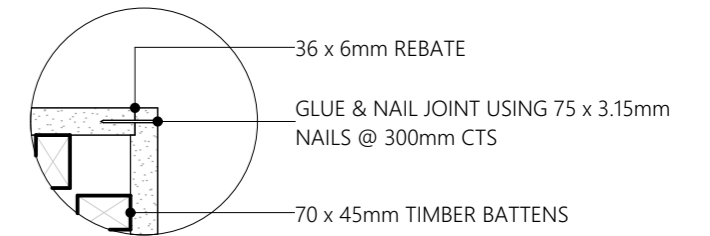
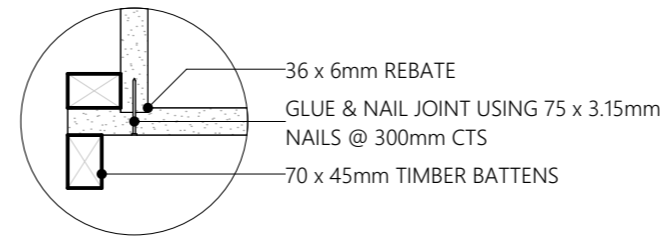
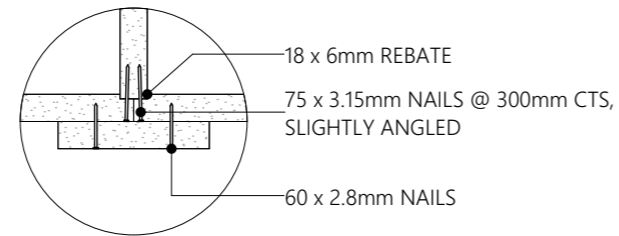
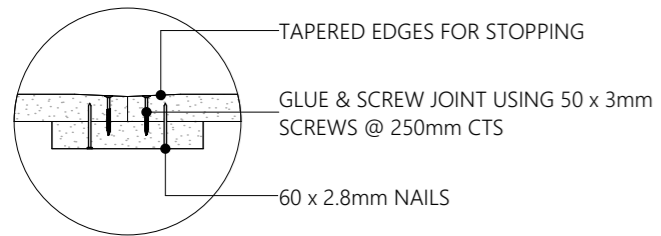


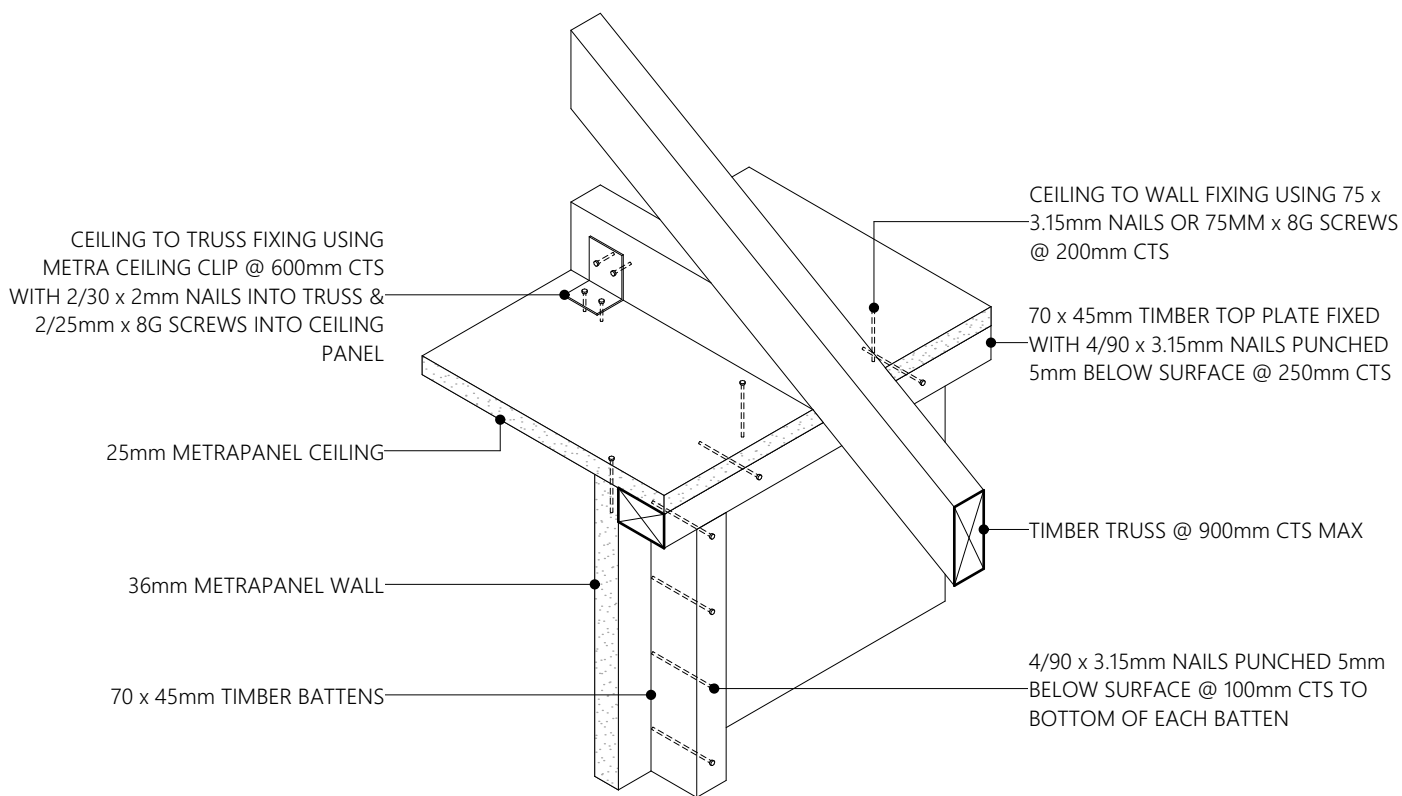


INSULATION, BUILDING WRAP, CAVITY BATTENS
& CLADDING OMITTED FOR CLARITY

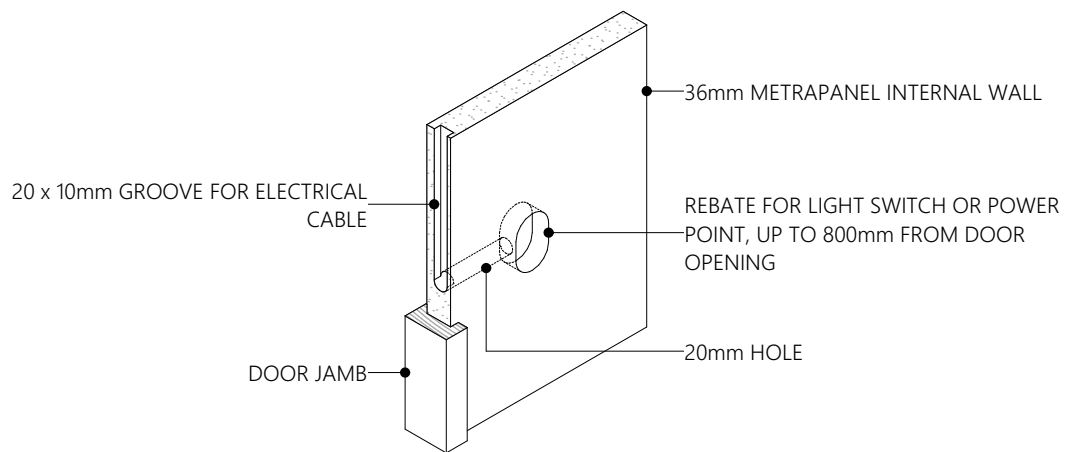
OPTION A
METRAPANEL 6kN HOLDDOWN, FIXED
WITH 8/30 x 3.15mm NAILS OR 25mm x
8G SCREWS INTO METRAPANEL WALL
AND 2/HILTI 100 x 6mm HUS SCREWS
INTO FLOOR

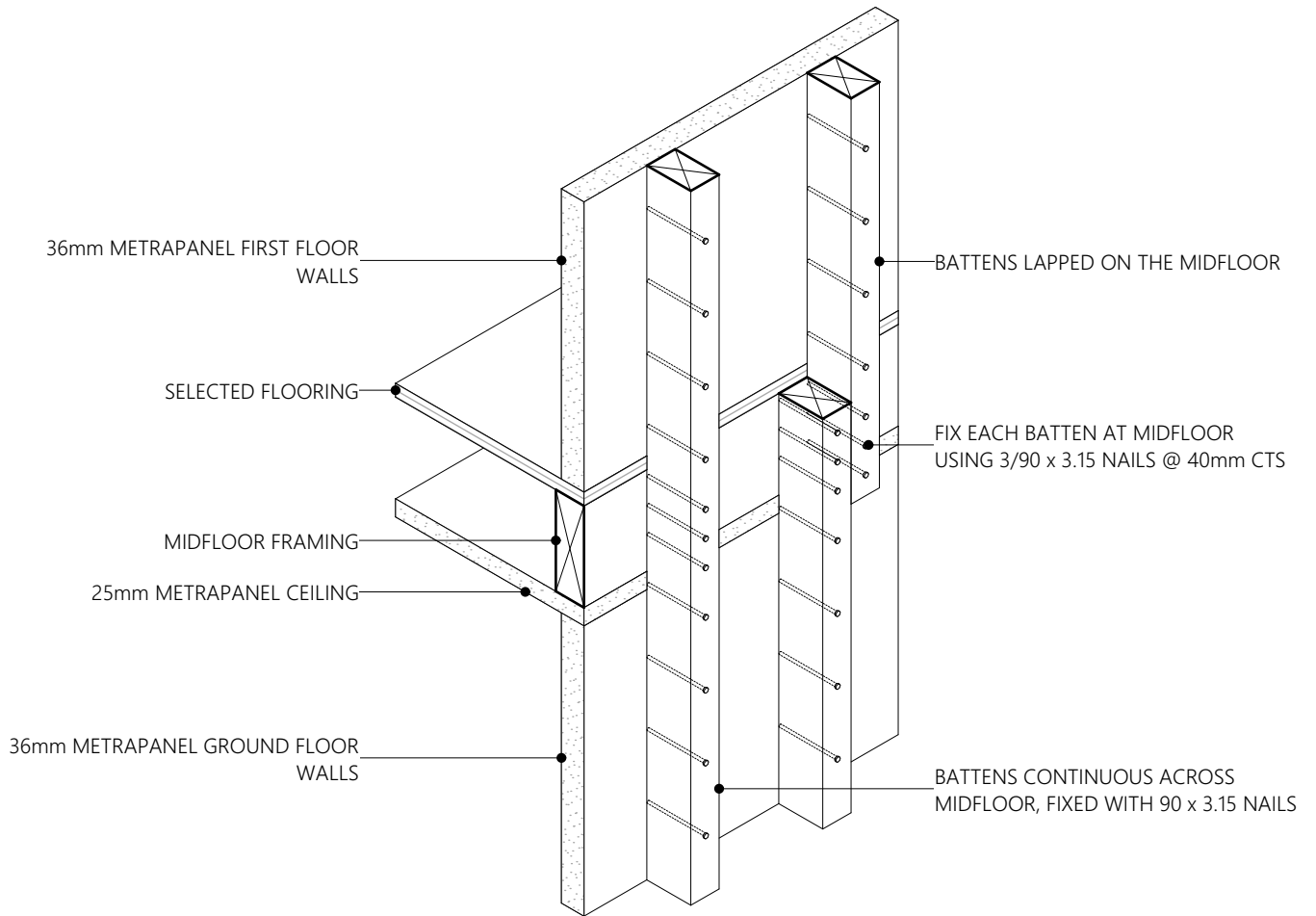
OPTION B
METRAPANEL 6kN HOLDDOWN, FIXED
WITH 8/30 x 3.15mm NAILS OR 25mm x
8G SCREWS INTO METRAPANEL WALL
AND 2/HILTI 100 x 6mm HUS SCREWS
INTO FLOOR



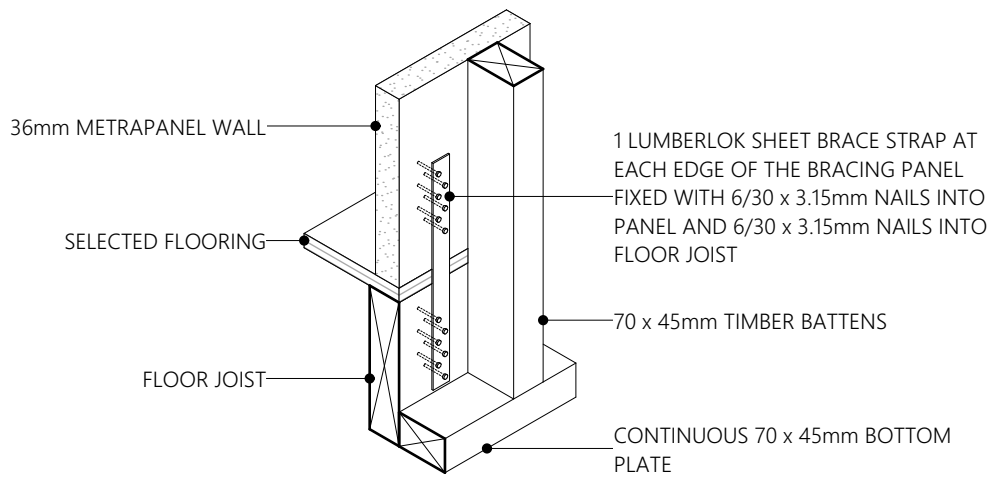


INSULATION, BUILDING WRAP, CAVITY BATTENS & CLADDING OMITTED FOR CLARITY





INSULATION, BUILDING WRAP, CAVITY BATTENS
& CLADDING OMITTED FOR CLARITY



INSULATION, BUILDING WRAP, CAVITY BATTENS
& CLADDING OMITTED FOR CLARITY