

RESIDENTIAL TRUE OAK® DEEP CORRUGATE WALL CLADDING METER BOX SIDE FLASHING FOR VERTICAL CLADDING ON CAVITY

Detail No. RI-RTDWO16A-1

Date drawn: 01/02/2020

Scale: 1 : 5 @ A4

Version: 01

BUILDING WRAP DRESSED INTO OPENING
WITH 50mm RETURN TO INSIDE OF FRAME
WITH WINDOW FLASHING TAPE INSTALLED
OVER WRAP TO CORNERS

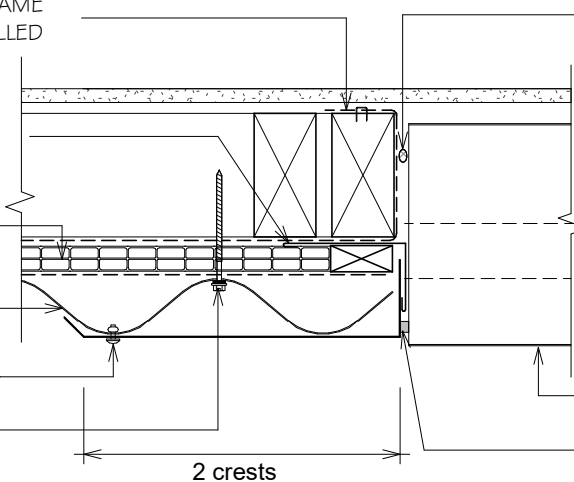
ROOFING INDUSTRIES BACK TRAY*
FLASHING RUN FROM TOP OF HEAD
FLASHING TO GROUND OR EXIT POINT

HORIZ BATTEN BETWEEN
VERTICAL BATTENS

ROOFING INDUSTRIES
'TRUE OAK' DEEP
CORRUGATE

FLASHING RIVET FIXED TO CLADDING

SCREW FIXING



WATERPROOF AIRSEAL
TO PERIMETER OF
TRIM CAVITY

METER BOX

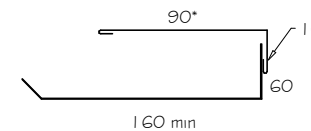
LAP SEAL TAPE OR SEALANT

NOTES:

1. REFER TO E2/AS1 FOR GENERAL METERBOX AND SIMILAR PENETRATIONS / OPENINGS.
2. CAVITY BATTENS CONTAINING CORROSIVE MATERIAL MUST BE SEPARATED FROM METAL CLADDING BY DPC, BUILDING WRAP, PVC OR PAINTING
3. CASTELLATED BATTEN, DRAINAGE PLASTIC BATTEN OR APPROVED DRAINED BATTEN CAN BE USED WITH THIS SYSTEM

NOTES:

- These details are generally in compliance with E2/AS1 and/or the NZ Metal Roof & Wall Cladding Code of Practice and in some cases specific details by 'Roofing Industries'.
- The building designer is ultimately responsible to ensure that details used meet the requirements of the NZ Building Code for the specific project.
- Details of the supporting structure including cavity battens are indicative only and are the responsibility of the building designer. For steel framed buildings thermal break cavity battens may be required.
- Underlay selection and building wrap types are the responsibility of the designer. When rigid wall underlay is required it is the designers responsibility to ensure the correct type is used and follow the manufacturers recommendation for installation.
- These details are for Roofing Industries profile/s as nominated and may not be applicable to other profiles.
- This drawing is the copyright of 'Roofing Industries' and can only be copied or reproduced with their permission.
- Further information can be obtained from the NZ Metal Roof & Wall Cladding Code of Practice: www.metalroofing.org.nz or E2/AS1.



* Back tray size may require to increase to ensure coverage at ends of head flashing. (Dimensions are indicative only) Turn down end of head flashing

Copyright detail © 2020

