

PRODUCT TECHNICAL STATEMENT



DriStud

PROCTOR PASSIVE Wraptite SA



INTRODUCTION

Proctor Passive Wraptite SA consists of triple layer polyolefin textile with a proprietary acrylic moisture vapour permeable adhesive and release liner.

It combines the best properties of a vapour permeable membrane and a self adhesive water and air barrier in one innovative self-adhering product, decreasing installation times in comparison with mechanically fastened membrane systems.

PRODUCT DESCRIPTION

1. Proctor Passive Wraptite SA fully bonds without mechanical attachments to most substrates for ease of installation, requiring minimal use of sealants or tapes.
2. Proctor Passive Wraptite SA utilizes a patented full coverage air permeable adhesive to provide unsurpassed vapour permeability in a commercial quality, self-adhered, water resistant breather membrane.
3. Wraptite SA's high vapour permeability allows damp sheathing to dry quickly and moisture to escape. This ensures good indoor air quality and reduces the likelihood of mould, condensation, timber distortion and metal corrosion.

KEY FEATURES & ADVANTAGES

- NZBC compliance
- No primer required on most clean substrates.
- Tough laminate resists punctures and tears.
- Lightweight and easy to install.
- Multiple substrate compatibility.
- UV stabilized for up to six weeks of UV exposure
- Low Flammability (Flammability Index: 1)
- Wide service temperature range, easily installed in most climates.
- Tear, rip and puncture resistant during and after construction, reducing install costs.

SCOPE

Proctor Passive Wraptite SA can be installed on new and existing buildings and it is suitable for roof and wall applications for residential, commercial and high rise buildings. Proctor Passive Wraptite SA's high vapour permeable peel and stick products used full coverage in pitched roofs and walls allow excellent drying capacity for assemblies wetting during construction and from typical in service leaks over the life-time of the building. Proctor Passive Wraptite SA can be installed over rigid air barrier, replacing tape and flexible underlay. It offers minimal mechanical fixings and provide greater integrity of installation and system.

MULTIPLE SUBSTRATE COMPATIBILITY

Exterior Gypsum Sheathing	Aluminium (painted or mill finish)	OSB	Most rigid insulation
Cast-in place concrete	Rigid vinyl	Pre-painted steel	Galvanized metal
Precast concrete	Steel	Concrete block	Plywood

Proctor Passive Wraptite SA

Distributed by **DriStud** – a division of TCL Hunt
7 Fisher Crescent, Mt. Wellington, Auckland, NZ

Revision 1.0
May 2019

PRODUCT TECHNICAL STATEMENT

NZBC CLAUSES

When specified and installed in accordance with the requirements of this certificate, Proctor Passive Wraptite SA will comply with the following provisions of the NZ Building Code;

- B1.3.1, B1.3.2, B1.3.3 (c, h, q), B1.3.4 (a, b, c, d, e) B2.3.1 (a), B2.3.2 (a)
- C3.4(c)
- E2.3.2, E2.3.7 (a, b, c)
- F2.3.1

Table 1: NZBC E2/AS1 Table 23 Requirements

Property	Test Method	Requirements	Results
Nominal Thickness	Calibrated deadweight micrometre		0.65mm
Weight (excludes release liner)	Electronic weight scale		240 g/m² (±10g/m²)
Installation Temperature			-6°C to 60°C
Service Temperature			-40°C to 100°C
Water Vapour Resistance	ASTM E96 Procedure B	≤ 0.5 MN s/g	0.243 MN s/g
Air Resistance	BS ISO 5636-5:2003	≥ 0.1 MN s/m ³	Pass
Water Resistance	AS/NZS 4201.4:1994	≥ 100mm water head	Pass
Flammability	AS 1530.2*	≤ Index 5	Pass Flammability Index 1
Reaction to Fire	EN 11925-2 BS EN 13501-1		Class B, s1, d0**
Tensile Strength	AS 1301.448		MD: 7.9 KN/m CD: 4.5 KN/m
Edge Tear Resistance	TAPPI T470		MD: 379 N CD: 225 N
UV exposure	ASTM G154		8 weeks

*Tested with release liner removed and adhered to 3m plywood.

** Tested over 12mm Calcium Silicate Board as per BS EN 13238:2010

PRODUCT SIZE

Width	Length	m ² per roll	Weight per roll (including packaging)
1500mm	50m	75m ²	24kg

Proctor Passive Wraptite SA

Distributed by **DriStud** – a division of TCL Hunt
7 Fisher Crescent, Mt. Wellington, Auckland, NZ

Revision 1.0
May 2019



PRODUCT TECHNICAL STATEMENT

CONDITIONS & LIMITATIONS

- Proctor Passive Wraptite SA must not be applied in areas where it will be permanently exposed to UV light e.g. behind open-joint cladding.
- Substrate condition is critical to the adhesive performance of any self-adhered membrane or liquid applied flashing.
- Wraptite SA must be installed in accordance with the Proctor Wraptite SA installation guide for Australia and New Zealand.

INSTALLATION

- Tools required: Utility Knife, Rubber Roller, Stiff Brush, Marker Pen, Measure Tape, and Scissors
- Substrate Preparation: Substrate must be clean, dry and free from all bond-breaking contaminants, sharp protrusions or other matter that may hinder adhesion to the substrate. Clean any loose dust or dirt from the substrate by wiping with a clean dry cloth or brush. Remove and replace any damaged structural wall components.
- Wraptite bonds easily to multiple substrates without the need for a primer.
- Adhesive curing time = approx. 6 hours depending on environmental conditions.
- Keep Wraptite in the original packaging which also functions as a dispenser.
- IMPORTANT: Failure to roller the membrane effectively may result in poor adhesion to the substrate.
- Always install with an overlap, with the upper courses lapped over lower courses. All horizontal and vertical overlaps must be a minimum of 75mm. Vertical overlaps should be staggered from floor-to-floor or separated by a horizontally applied Wraptite strip. Internal and external vertical corners should have a minimum overlap of 150mm.
- At the end of each working day, protect the leading edge of Wraptite with a temporary tarpaulin to ensure liquid water does not seep behind the membrane.
- Wraptite should only be applied in dry weather when air and surface temperatures are above 0°C. Do not install Wraptite in adverse weather conditions.
- Wraptite must be covered with external cladding within 6 weeks during construction. If exceeding this limit is unavoidable protect Wraptite from the elements with a tarpaulin.
- **Windows & Doors**
 1. Pre-fill any joints, gaps and cracks >6mm with a generous bead of Wraptite LF and allow to cure fully.
 2. Fill remaining joints gaps and cracks <6mm with Wraptite LF and smooth across the rough surface with a putty knife.
 3. Finish door and window detailing by using either Wraptite Corners (Figs 7a,b) or a combination of Wraptite Tape and Wraptite LF (Figs 8a-d)

Proctor Passive Wraptite SA

Distributed by **DriStud** – a division of TCL Hunt
7 Fisher Crescent, Mt. Wellington, Auckland, NZ

Revision 1.0
May 2019



PRODUCT TECHNICAL STATEMENT

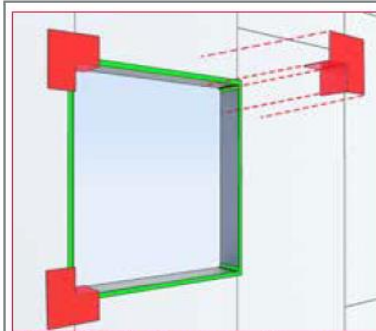


Fig 7a: Wraptite Corners used in corners.

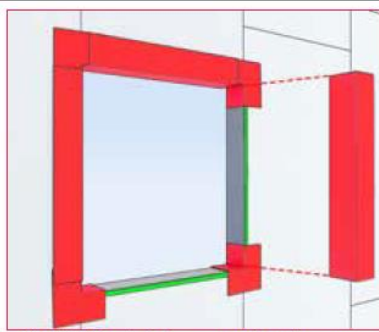


Fig 7b: Wraptite Tape around perimeter.

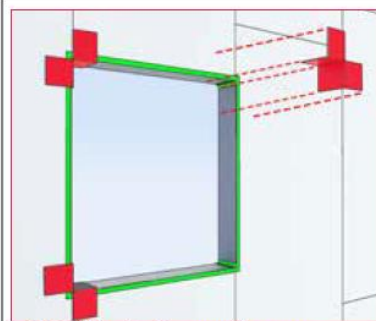


Fig.8a: Wraptite Tape used in corners.

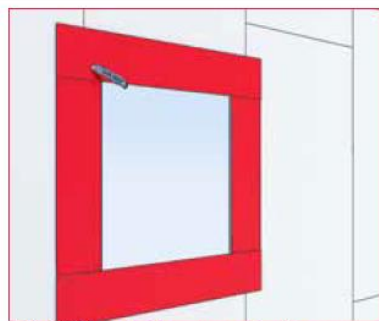


Fig.8b: Wraptite Tape around perimeter.

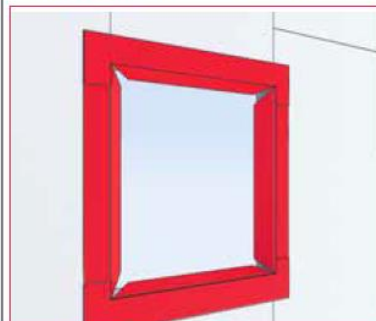


Fig.8c: Wraptite Tape cut at 45deg angles and folded inwards.

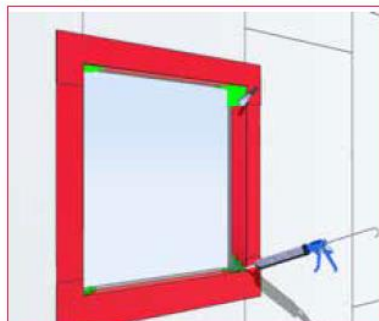


Fig.8d: Apply Wraptite LF and smooth over Tape edges with a putty knife.

Please go to DriStud website (www.dristud.co.nz) or contact DriStud (0800 374 7883, technical@dristud.co.nz) for Proctor Wraptite SA Australia & New Zealand Installation Guide.

MAINTENANCE

Proctor Passive Wraptite SA does not require any maintenance but when exposed through removal of cladding, the wrap must be inspected and any damaged areas repaired or replaced.

STORAGE & TRANSPORTATION

Proctor Passive Wraptite SA rolls must be stored in a clean, dry place and must be protected from damage and UV/weather.

WARRANTY

Please contact DriStud for details of the Proctor Wraptite SA warranty.

Proctor Passive Wraptite SA

Distributed by **DriStud** – a division of TCL Hunt
7 Fisher Crescent, Mt. Wellington, Auckland, NZ

Revision 1.0
May 2019