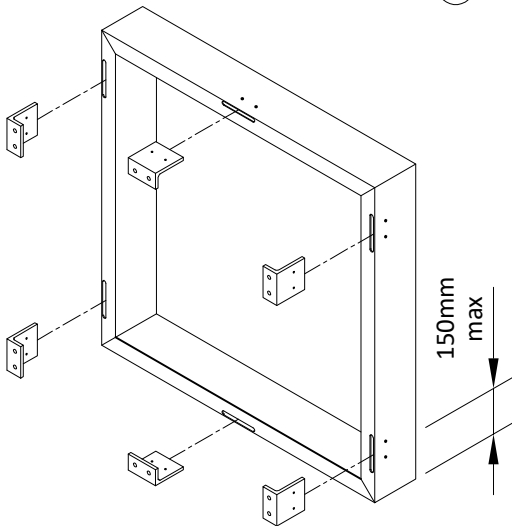
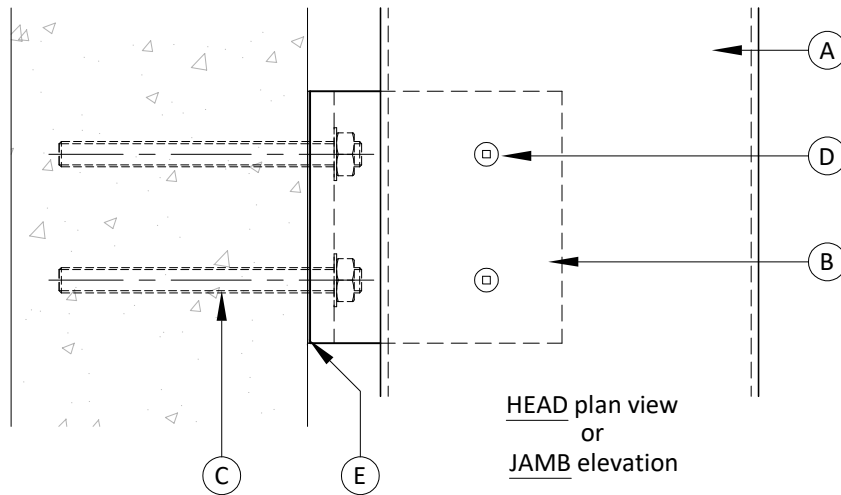
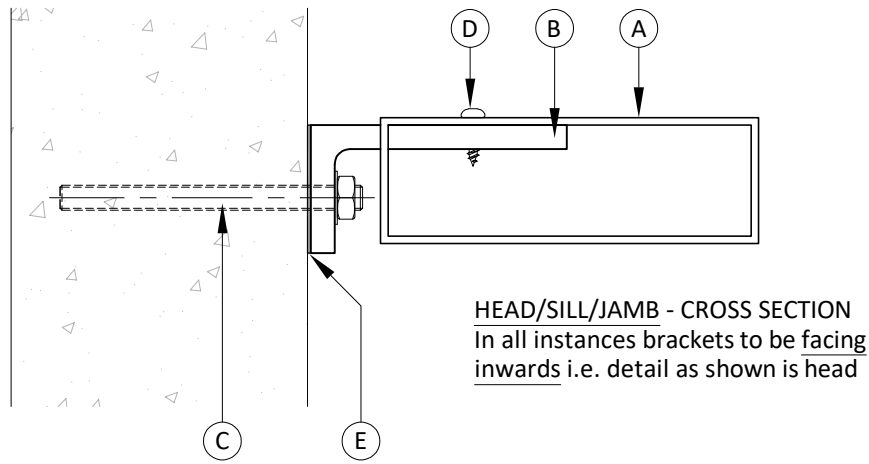


# DIRECT TO CONCRETE



Description	
A	Window shroud (size as specified)
B	101.6 x 50.8 x 9.5 x 100mm aluminium bracket (WS-B4)
C	(2x) M10 316 S/S threaded rod & chemset fixing with 90mm min embedment
D	(2x) 10G x 20 pan screw
E	Plastic separation

All brackets to be facing inwards. Outer edge to centre of corner bracket = 150mm max. Corner brackets to be either vertically or horizontally positioned but not both.

Window Shroud section sizes				
150mm x 40mm	150mm x 50mm	200mm x 50mm	250mm x 50mm	300mm x 50mm

Wind Zones	Window Shroud section sizes					
	150mm x 40mm	150mm x 50mm	200mm x 50mm	250mm x 50mm	300mm x 50mm	
	Low (32m/s)	2.0m	2.0m	2.0m	2.0m	2.0m
	Medium (37m/s)	2.0m	2.0m	2.0m	2.0m	2.0m
	High (44m/s)	2.0m	2.0m	2.0m	1.8m	1.8m
Very High (50m/s)	1.8m	1.8m	1.8m	1.5m	1.5m	
Extra High (55m/s)	1.5m	1.5m	1.5m	1.2m	1.2m	