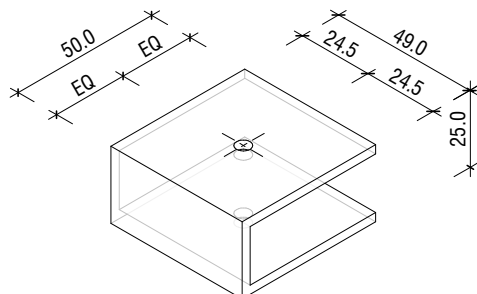


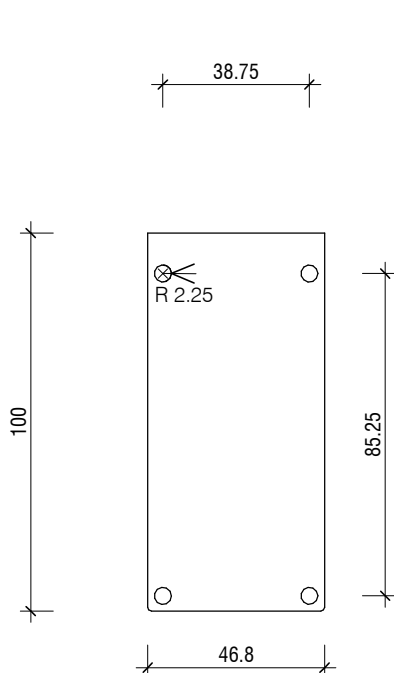
END PLATE FIXINGS

ALL END PLATES SUPPLIED WITH THE REQUIRED END PLATE FIXING SCREWS
ILLUSTRATED ON SHEET CV-06-MECHANICAL FIXINGS

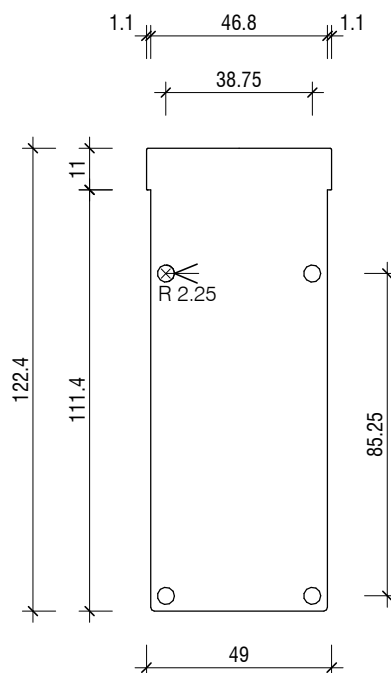
ClearVue



CV-EP6-01
END PLATE



CV-EP-03
END PLATE



CV-EP6-04
END PLATE

NOTE: Recommended roof pitch 5°. Minimum roof pitch of 3°, consult your PSP agent for suitable applications.

NOTE: All dimensions are in millimeters (mm)

ClearVue

END PLATES - 6mm SHEET

320 Rosedale Road, Albany, Auckland, New Zealand
PO Box 101 851 NSMC, New Zealand

Note: Details may be subject to change without notification



T.09 415 2800
F.09 415 2809
www.psp.co.nz

ClearVue roofing system to be installed and fixed to suitable structural support, complying with relevant clauses of the NZBC and the New Zealand Building Act.

Scale: **As** @ A4
indicated

Date: 10/12/2019

Dwg: **CV-04**