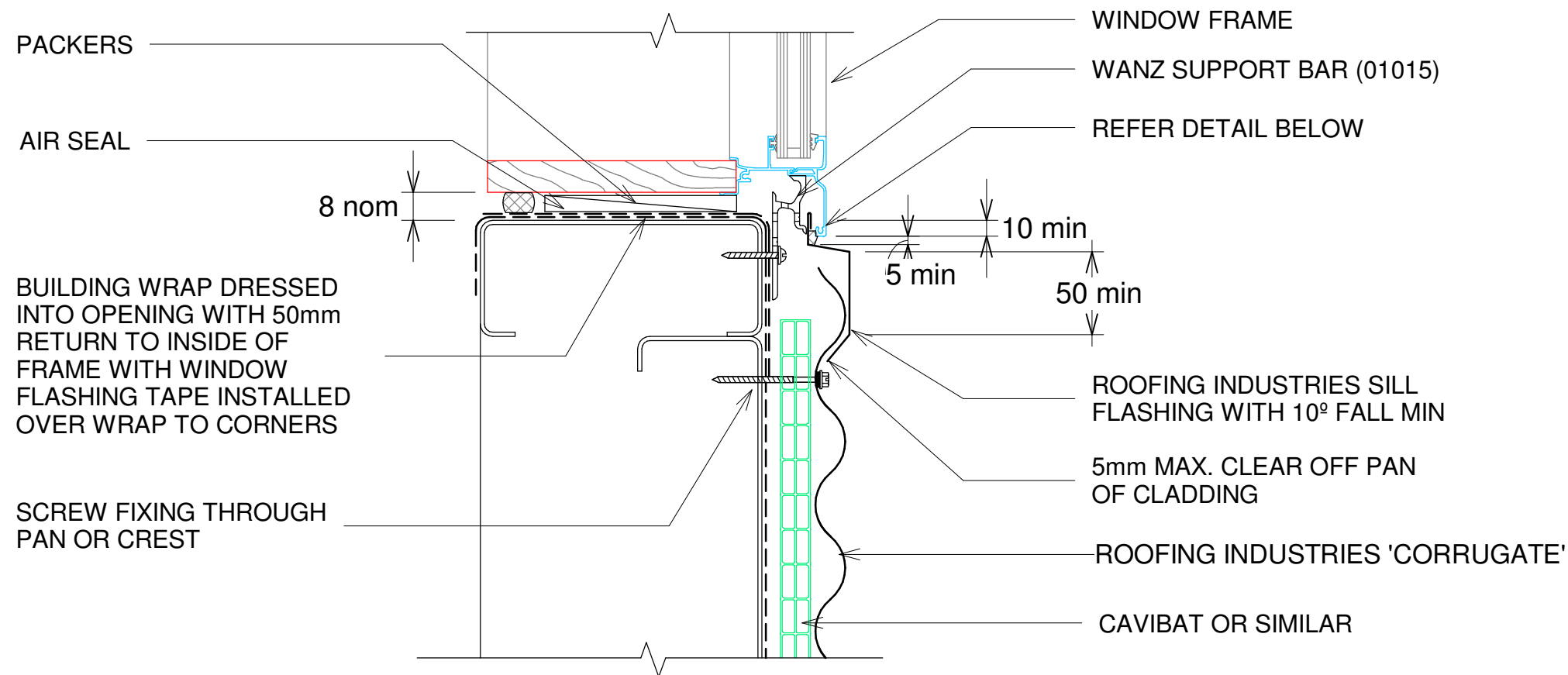


# COMMERCIAL CORRUGATE WALL CLADDING WINDOW / DOOR SILL FLASHING FOR HORIZ CLADDING ON CAVITY (Recessed Window/Door)

Detail Number: RI-CCW032C

Date drawn: 01/08/2019

Scale: 1 : 5@ A4



PACKERS

AIR SEAL

8 nom

BUILDING WRAP DRESSED INTO OPENING WITH 50mm RETURN TO INSIDE OF FRAME WITH WINDOW FLASHING TAPE INSTALLED OVER WRAP TO CORNERS

SCREW FIXING THROUGH PAN OR CREST

WINDOW FRAME

WANZ SUPPORT BAR (01015)

REFER DETAIL BELOW

10 min

5 min

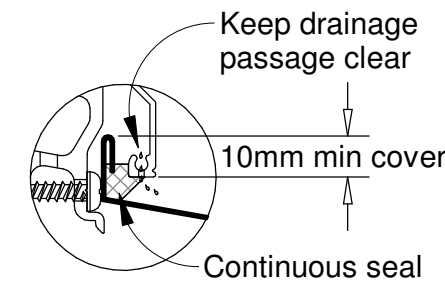
50 min

ROOFING INDUSTRIES SILL FLASHING WITH 10° FALL MIN

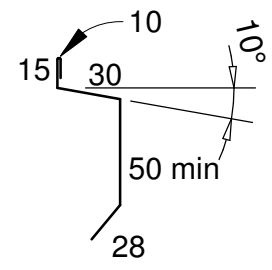
5mm MAX. CLEAR OFF PAN OF CLADDING

ROOFING INDUSTRIES 'CORRUGATE'

CAVIBAT OR SIMILAR



NOTE:  
Sill sealing method for flange end type drainage systems



Sill flashings stop ended to receive jamb flashings  
(Dimensions are indicative only & show minimum lap covers)

## GENERAL NOTES:

1. REFER TO E2/AS1 FOR GENERAL WINDOW OPENING FOR WRAPPING OF FRAMED OPENING PRIOR TO WINDOW INSTALLATION.
2. A MIN. OF 8mm EFFECTIVE COVER AT SILLS SHALL BE PERMITTED WHERE NECESSARY TO ALLOW FOR TOLERANCES.
3. WINDOW PROFILE TO BE SELECTED TO ACHIEVE COVER SHOWN IN DETAILS.
4. WHERE SUPPORT BRACKETS ARE REQUIRED BY THE WINDOW MANUFACTURER TO CARRY THE FRAME AND GLAZING LOADS THEY MUST BE SUPPLIED AS AN INTEGRAL PART OF THE WINDOW MANUFACTURER'S RECOMMENDATIONS.
5. LIAISE WITH WINDOW MANUFACTURER PRIOR TO INSTALLATION.

REFERENCE FLASHINGS:  
NZ METAL ROOF AND WALL CLADDING CODE OF PRACTICE  
NZMRM AND E2/AS1.  
DIMENSIONS ARE INDICATIVE ONLY

## NOTES:

- These details are generally in compliance with E2/AS1, where applicable to profile, and the NZ Metal Roof & Wall Cladding Code of Practice and in some cases specific details by 'Roofing Industries'.
- The building designer is ultimately responsible to ensure that details used meet the requirements of the NZ Building Code for the specific project.
- Details of the supporting structure are indicative only and are the responsibility of the building designer.
- Thermal break or cavity battens may be required in some circumstances.
- Underlay selection and building wrap types are the responsibility of the designer. Alternative support to galvanised netting should be used in severe coastal environments including when aluminium is used.
- These details are for Roofing Industries profile/s as nominated and may not be applicable to other profiles.
- This drawing is the copyright of 'Roofing Industries' and can only be copied or reproduced with their permission.
- Further information can be obtained from the NZ Metal Roof & Wall Cladding Code of Practice: [www.metalroofing.org.nz](http://www.metalroofing.org.nz) or E2/AS1.
- Where necessary, adjust drawings for purlin or cavity battens.
- Details are for steel based materials, other substrate may require some changes.

Copyright detail © 2019

