

# COMMERCIAL CORRUGATE WALL CLADDING WINDOW / DOOR JAMB FLASHING FOR HORIZ CLADDING ON CAVITY (Recessed Window/Door)

Detail Number: RI-CCW032B

Date drawn: 01/08/2019

Scale: 1 : 5@ A4

BUILDING WRAP DRESSED INTO  
OPENING WITH 50mm RETURN  
TO INSIDE OF FRAME WITH  
WINDOW FLASHING TAPE INSTALLED  
OVER WRAP TO CORNERS

ROOFING INDUSTRIES BACK TRAY\*  
FLASHING RUN FROM TOP OF  
HEAD FLASHING TO GROUND OR  
EXIT POINT

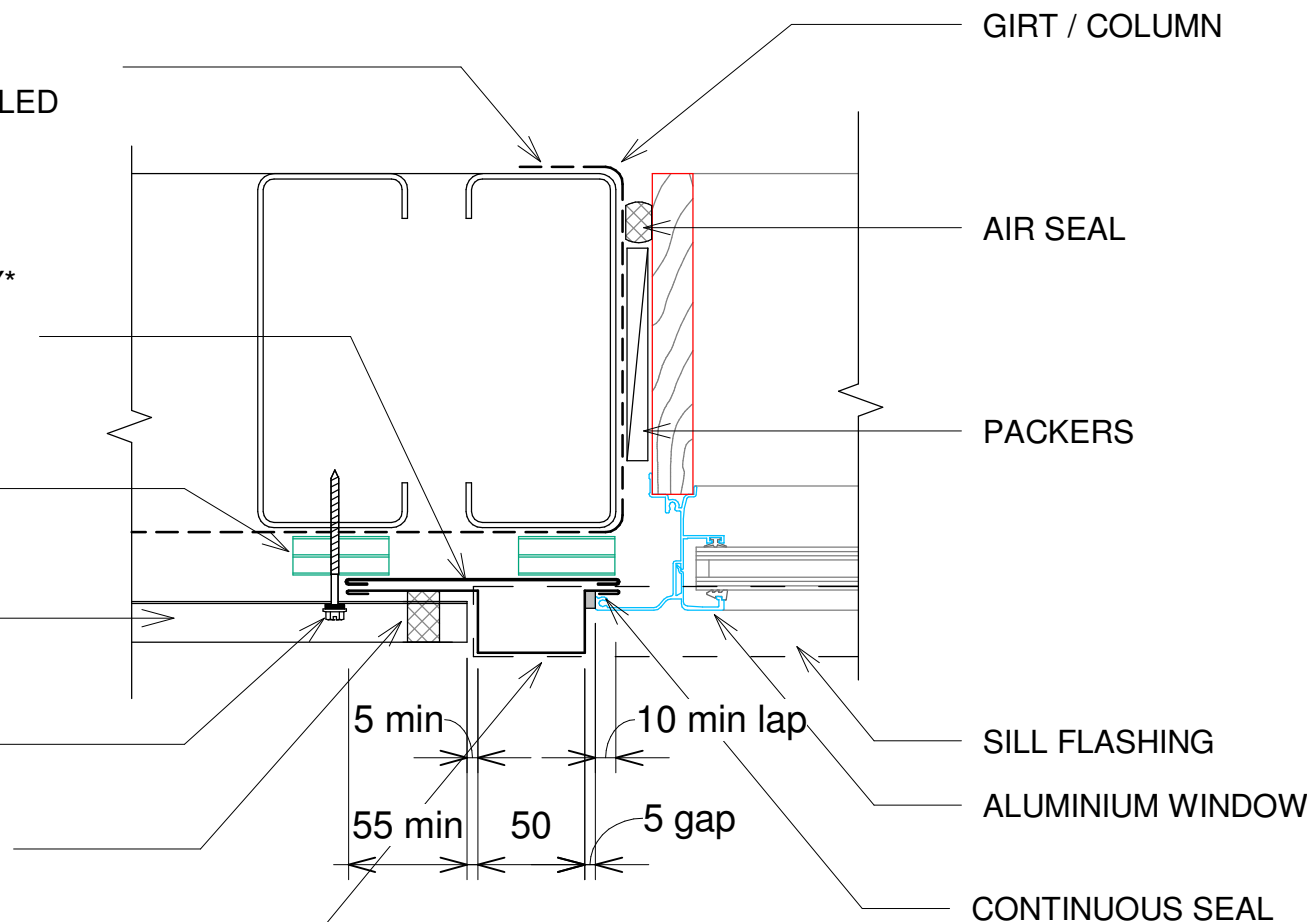
CAVIBAT OR SIMILAR

ROOFING INDUSTRIES  
'CORRUGATE'

SCREW FIXING

CONTINUOUS COMPRESSIBLE  
FOAM SEAL

ROOFING INDUSTRIES JAMB FLASHING

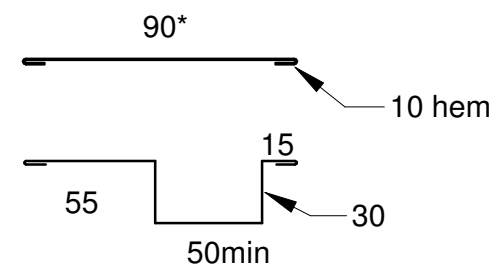


## GENERAL NOTES:

1. REFER TO E2/AS1 FOR GENERAL WINDOW OPENING FOR WRAPPING OF FRAMED OPENING PRIOR TO WINDOW INSTALLATION.
2. A MIN. OF 8mm EFFECTIVE COVER AT SILLS SHALL BE PERMITTED WHERE NECESSARY TO ALLOW FOR TOLERANCES.
3. WINDOW PROFILE TO BE SELECTED TO ACHIEVE COVER SHOWN IN DETAILS.
4. WHERE SUPPORT BRACKETS ARE REQUIRED BY THE WINDOW MANUFACTURER TO CARRY THE FRAME AND GLAZING LOADS THEY MUST BE SUPPLIED AS AN INTEGRAL PART OF THE WINDOW MANUFACTURER'S RECOMMENDATIONS.
5. LIASE WITH WINDOW MANUFACTURER PRIOR TO INSTALLATION.
6. SEAL HEAD FLASHING TO WINDOW IN VERY HIGH & EXTRA HIGH WIND ZONES.
7. REFER TO E2/AS1 FOR ALTERNATIVE.

REFERENCE FLASHINGS:  
NZ METAL ROOF AND WALL CLADDING  
CODE OF PRACTICE NZMRM AND  
E2/AS1.  
DIMENSIONS ARE INDICATIVE ONLY

\* Back tray size may require to increase to ensure coverage at ends of head flashings. (Dimensions are indicative only) Turn down end of head flashing



## NOTES:

- These details are generally in compliance with E2/AS1, where applicable to profile, and the NZ Metal Roof & Wall Cladding Code of Practice and in some cases specific details by 'Roofing Industries'.
- The building designer is ultimately responsible to ensure that details used meet the requirements of the NZ Building Code for the specific project.
- Details of the supporting structure are indicative only and are the responsibility of the building designer.
- Thermal break or cavity battens may be required in some circumstances.
- Underlay selection and building wrap types are the responsibility of the designer. Alternative support to galvanised netting should be used in severe coastal environments including when aluminium is used.
- These details are for Roofing Industries profile/s as nominated and may not be applicable to other profiles.
- This drawing is the copyright of 'Roofing Industries' and can only be copied or reproduced with their permission.
- Further information can be obtained from the NZ Metal Roof & Wall Cladding Code of Practice: [www.metalroofing.org.nz](http://www.metalroofing.org.nz) or E2/AS1.
- Where necessary, adjust drawings for purlin or cavity battens.
- Details are for steel based materials, other substrate may require some changes.

Copyright detail © 2019

