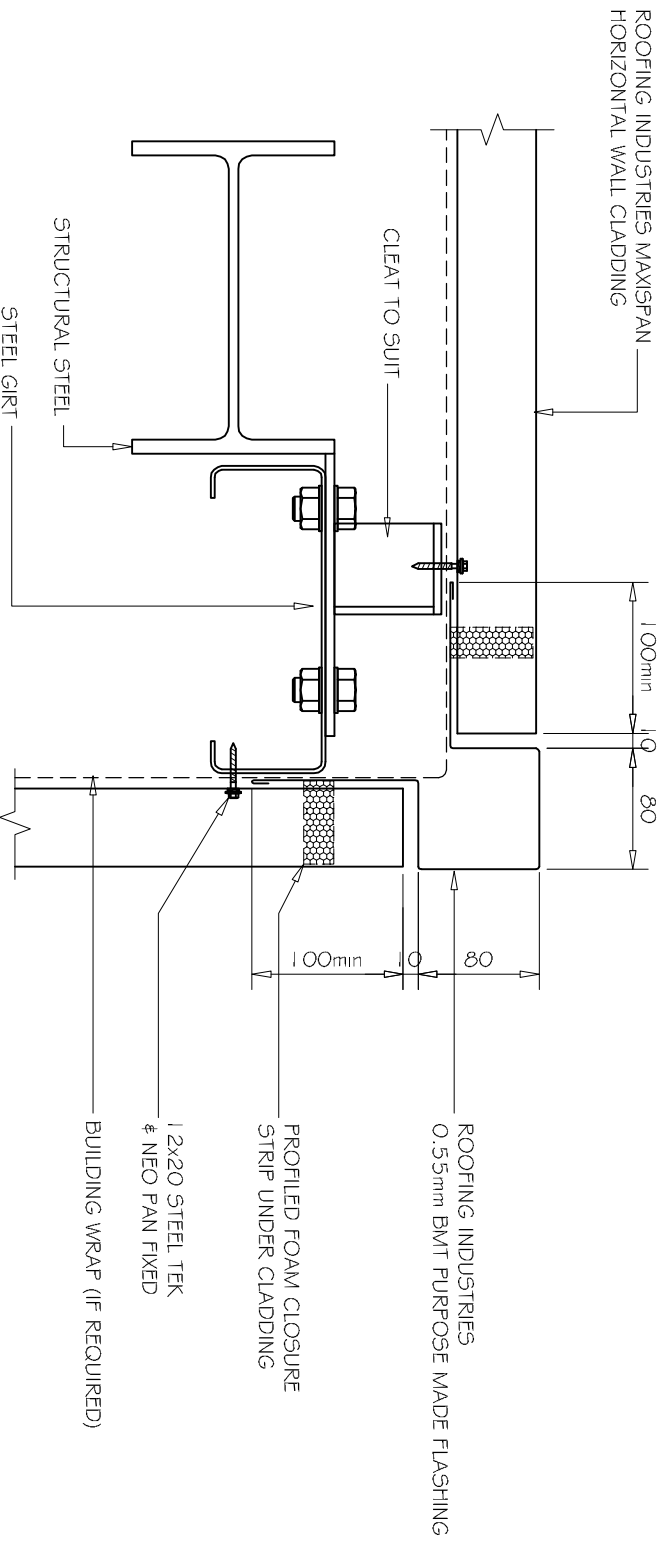
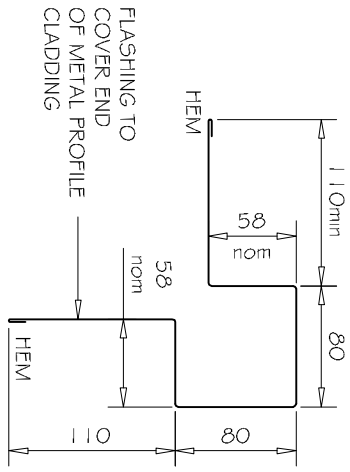


# COMMERCIAL MAXISPAN WALL CLADDING EXTERNAL CORNER HORIZONTAL CLADDING DETAIL

DETAIL NO. CMSW023A  
DATE DRAWN 11/03/12  
FILE REFERENCE R1-CMSW023A.DWG



**A** - **EXTERNAL CORNER - PLAN VIEW**  
1:5



- NOTES:**
- These details are generally in compliance with the NZ Metal Roof & Wall Cladding Code of Practice and in some cases specific details by Roofing Industries.
  - The building designer is ultimately responsible to ensure that details used meet the requirements of the NZ Building Code for the specific project.
  - Details of the supporting structure are indicative only and are the responsibility of the building designer.
  - Thermal break or cavity battens may be required in some circumstances.
  - Underlay selection and building wrap types are the responsibility of the designer, Alternative support to galvanised netting should be used in severe coastal environments including when aluminium is used.
  - These details are for Roofing Industries profiles as nominated and may not be applicable to other profiles.
  - This drawing is the copyright of Roofing Industries and can only be copied or reproduced with their permission.
  - Further information can be obtained from the NZ Metal Roof & Wall Cladding Code of Practice [www.metd.roofer.org.nz](http://www.metd.roofer.org.nz) & [www.roof.co.nz](http://www.roof.co.nz)
  - Where necessary adjust drawings for purlin battens or cavity battens.
  - Details are for steel based materials, other substrate may require some changes.

