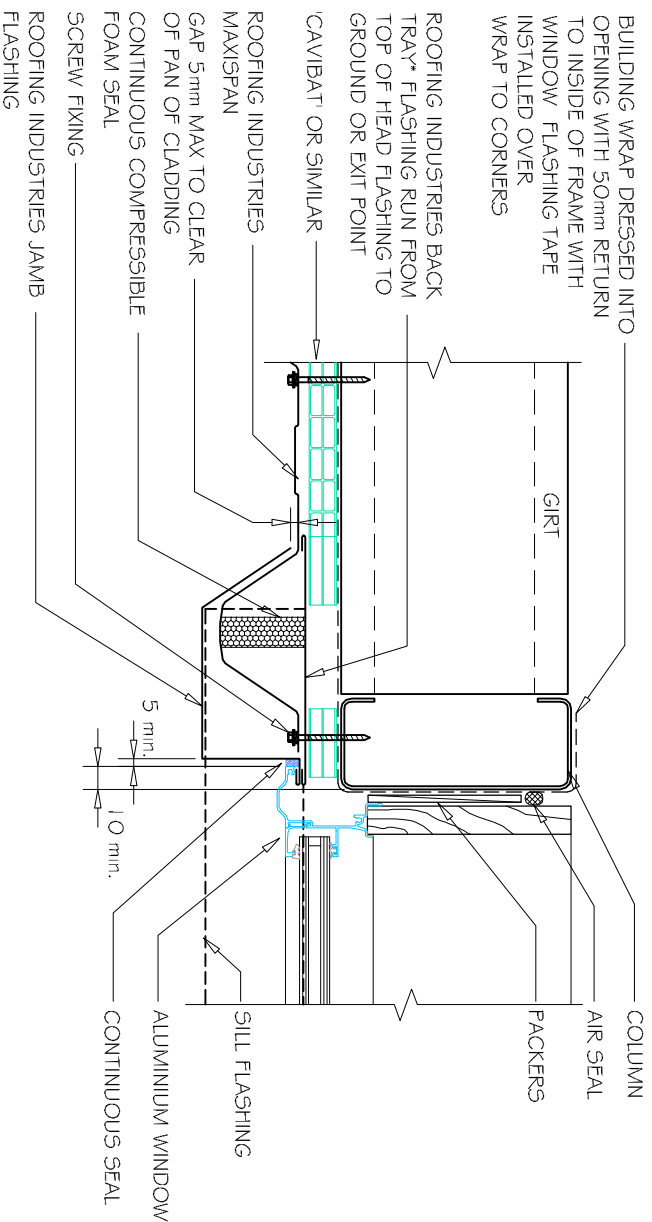


# COMMERCIAL WINDOW / DOOR JAMB FLASHING FOR MAXISPAN VERTICAL CLADDING ON CAVITY. (Recessed Window/Door)



**B** WINDOW JAMB VERTICAL MAXISPAN (with cavity)  
1:5

**NOTES:**

- These details are generally in compliance with the NZ Metal Roof & Wall Cladding Code of Practice and in some cases specific details by Roofing Industries.
- The building designer is ultimately responsible to ensure that details used meet the requirements of the NZ Building Code for the specific project.
- Details of the supporting structure are indicative only and are the responsibility of the building designer.
- Thermal break or cavity battens may be required in some circumstances.
- Underlay selection and building wrap types are the responsibility of the designer, Alternative support to galvanised netting should be used in severe coastal environments including when aluminum is used.
- These details are for Roofing Industries profiles as nominated and may not be applicable to other profiles.
- This drawing is the copyright of Roofing Industries and can only be copied or reproduced with their permission.
- Further information can be obtained from the NZ Metal Roof & Wall Cladding Code of Practice [www.metdroof.co.nz](http://www.metdroof.co.nz) & [www.roof.co.nz](http://www.roof.co.nz)
- Where necessary adjust drawings for purlin battens or cavity battens.
- Details are for steel based materials, other substrate may require some changes.

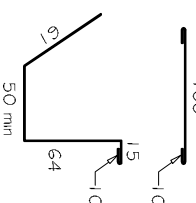
DETAIL NO. CMSW012B-1  
DATE DRAWN 16/08/12  
FILE REFERENCE RI-CMSW012B-1.DWG

**GENERAL NOTES:**

- (1) REFER TO E2/A5 I OR WANZ WIS FOR GENERAL WINDOW OPENING FOR WRAPPING
- (2) WINDOW PROFILE TO BE SELECTED TO ACHIEVE COVER SHOWN IN DETAILS.
- (3) ARCHITRAVES ARE SHOWN FOR CONSISTENCY ONLY, DETAIL MAY BE USED WITH REBATED LINER.
- (4) WHERE SUPPORT BRACKETS ARE REQUIRED BY THE WINDOW MANUFACTURER TO CARRY THE FRAME AND GLAZING LOADS, THEY MUST BE SUPPLIED AS AN INTEGRAL PART OF THE WINDOW MANUFACTURERS RECOMMENDATIONS.
- (5) LASE WITH WINDOW MANUFACTURER PRIOR TO INSTALLATION.

**REFERENCE FLASHINGS:**

NZ METAL ROOF AND WALL CLADDING  
CODE OF PRACTICE NZMRM.  
WANZ WIS.  
DIMENSIONS ARE INDICATIVE ONLY



\* Back tray size may require to increase to ensure coverage at ends of head flashings. (Dimensions are indicative only)  
Turn down end of head flashing

©COPYRIGHT DETAIL 2012

