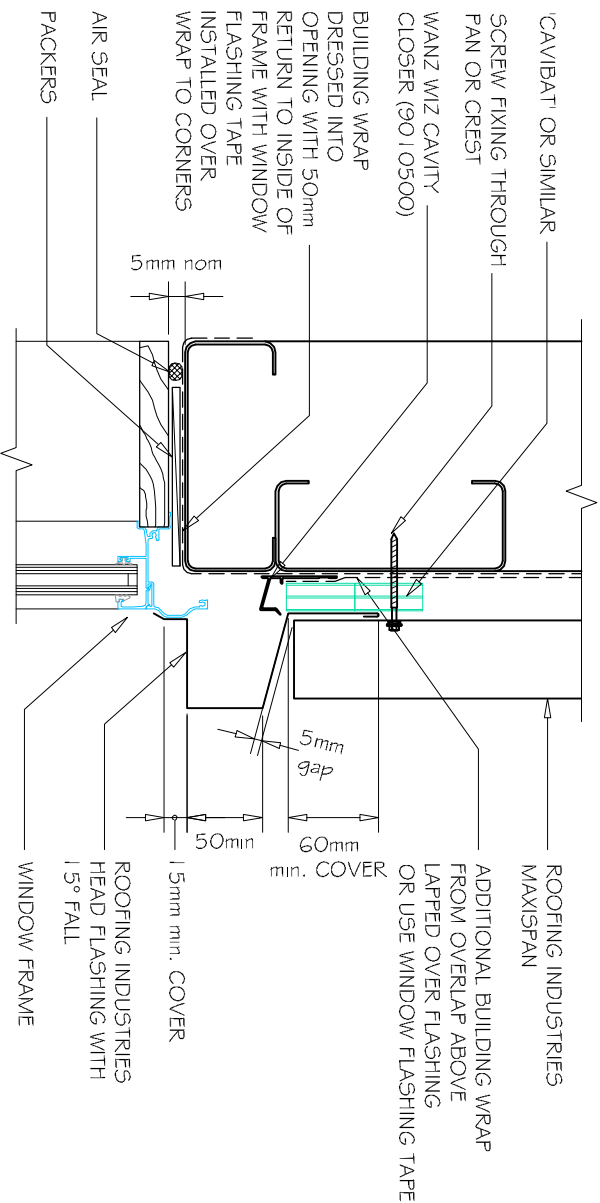


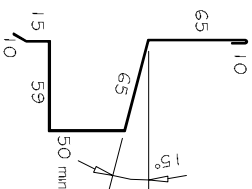
COMMERCIAL WINDOW / DOOR HEAD FLASHING FOR MAXISPAN VERTICAL CLADDING ON CAVITY. (Recessed Window/Door)



A WINDOW HEAD VERTICAL MAXISPAN (with cavity)
1:5

NOTES:

- These details are generally in compliance with the NZ Metal Roof & Wall Cladding Code of Practice and in some cases specific details by Roofing Industries.
- The building designer is ultimately responsible to ensure that details used meet the requirements of the NZ Building Code for the specific project.
- Details of the supporting structure are indicative only and are the responsibility of the building designer.
- Thermal break or cavity battens may be required in some circumstances.
- Underlay selection and building wrap types are the responsibility of the designer, Alternative support to galvanised netting should be used in severe coastal environments including when aluminum is used.
- These details are for Roofing Industries' profiles as nominated and may not be applicable to other profiles.
- This drawing is the copyright of Roofing Industries' and can only be copied or reproduced with their permission.
- Further information can be obtained from the NZ Metal Roof & Wall Cladding Code of Practice www.metdroof.co.nz & www.roof.co.nz
- Where necessary adjust drawings for purlin battens or cavity battens.
- Details are for steel based materials, other substrate may require some changes.



(Dimensions are indicative only)
Turn down end of head flashing

DETAIL NO. CMSWO12A-1
DATE DRAWN 16/08/12
FILE REFERENCE RI-CMSWO12A-1.DWG

GENERAL NOTES:

- (1) REFER TO E2/A5.1 OR WANZ WIZ FOR GENERAL WINDOW OPENING FOR WRAPPING
- (2) WINDOW PROFILE TO BE SELECTED TO ACHIEVE COVER SHOWN IN DETAILS.
- (3) ARCHITRAVES ARE SHOWN FOR CONSISTENCY ONLY, DETAIL MAY BE USED WITH REBATED LINER.
- (4) WHERE SUPPORT BRACKETS ARE REQUIRED BY THE WINDOW MANUFACTURER TO CARRY THE FRAME AND GLAZING LOADS, THEY MUST BE SUPPLIED AS AN INTEGRAL PART OF THE WINDOW MANUFACTURERS RECOMMENDATIONS.
- (5) LASE WITH WINDOW MANUFACTURER PRIOR TO INSTALLATION.

REFERENCE FLASHINGS:
NZ METAL ROOF AND WALL CLADDING
CODE OF PRACTICE NZMRM.
WANZ WIZ.
DIMENSIONS ARE INDICATIVE ONLY

©COPYRIGHT DETAIL 2012

