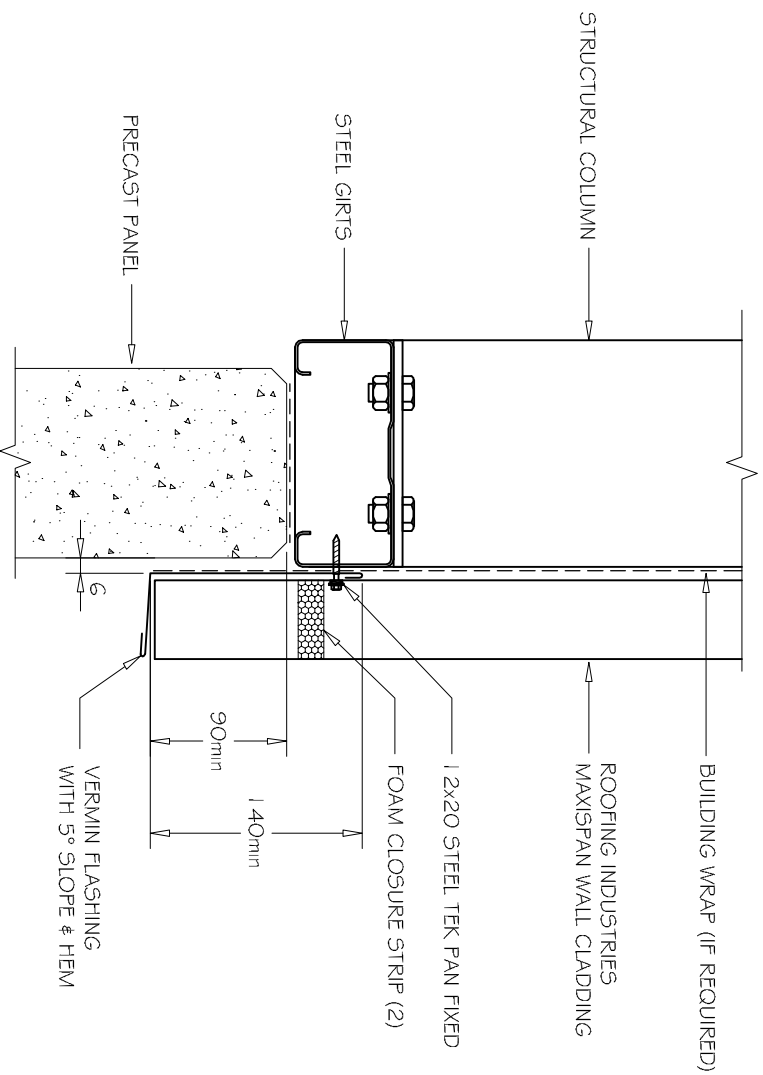


# COMMERCIAL MAXISPAN WALL CLADDING VERTICAL CLADDING OVER PRECAST PANEL



DETAIL NO. CMSW003A  
DATE DRAWN 11/03/12  
FILE REFERENCE R1-CMSW003A.DWG

NOTE:  
(1) DPC MUST BE INSTALLED UNDER ALL SURFACES IN CONTACT WITH A CONCRETE SUBSTRATE.  
(2) FOAM CLOSURE STRIP ONLY REQUIRED IN HIGH RISK SITUATIONS OF WIND BLOWN MOISTURE OR DRAFTS ENTERING OR IF BIRD OR VERMIN PROOFING IS REQUIRED.

## NOTES:

- These details are generally in compliance with the NZ Metal Roof & Wall Cladding Code of Practice and in some cases specific details by Roofing Industries.
- The building designer is ultimately responsible to ensure that details used meet the requirements of the NZ Building Code for the specific project.
- Details of the supporting structure are indicative only and are the responsibility of the building designer.
- Thermal break or cavity battens may be required in some circumstances.
- Underlay selection and building wrap types are the responsibility of the designer, alternative support to galvanised netting should be used in severe coastal environments including when aluminum is used.
- These details are for Roofing Industries' profiles as nominated and may not be applicable to other profiles.
- This drawing is the copyright of Roofing Industries' and can only be copied or reproduced with their permission.
- Further information can be obtained from the NZ Metal Roof & Wall Cladding Code of Practice [www.metd-roofer.org.nz](http://www.metd-roofer.org.nz) & [www.roof.co.nz](http://www.roof.co.nz)
- Where necessary adjust drawings for purlin battens or cavity battens.
- Details are for steel based materials, other substrate may require some changes.



BASE DETAIL VERTICAL MAXISPAN  
1:5

©COPYRIGHT DETAIL 2012

