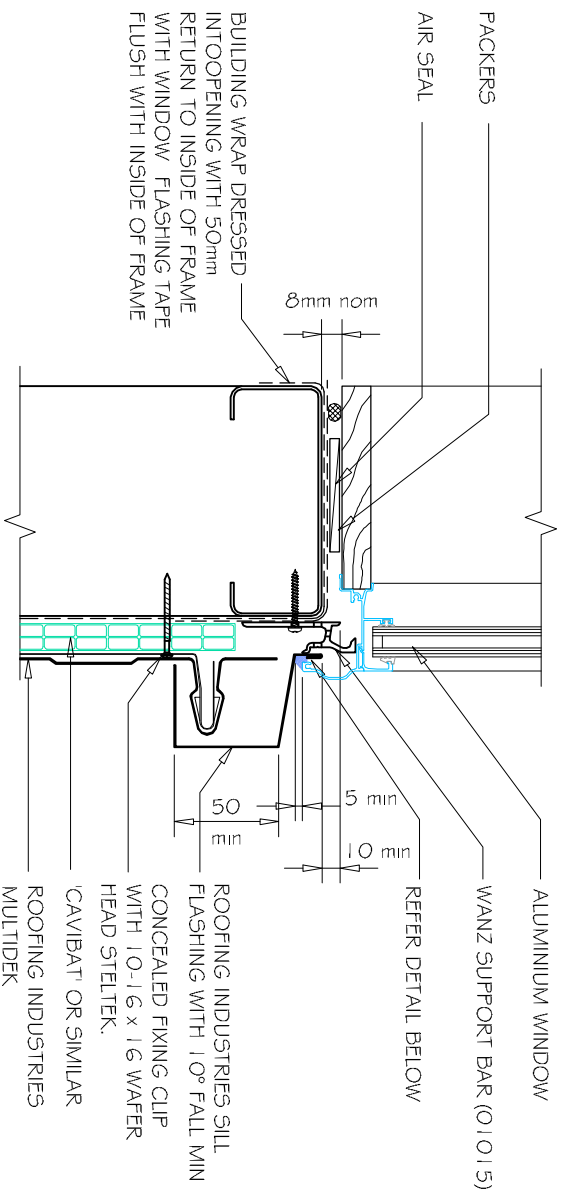
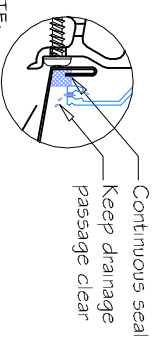
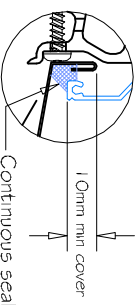


# COMMERCIAL MULTIDEK WINDOW / DOOR SILL FLASHING FOR HORIZONTAL CLADDING ON CAVITY. (Recessed Window/Door)



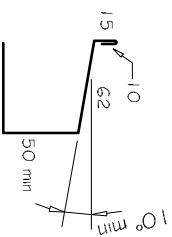
**C** WINDOW SILL HORIZONTAL MULTIDEK  
1:5



NOTE:  
Sill sealing method for flange end type drainage systems

- NOTES:
- These details are generally in compliance with the NZ Metal Roof & Wall Cladding Code of Practice and in some cases specific details by Roofing Industries.
  - The building designer is ultimately responsible to ensure that details used meet the requirements of the NZ Building Code for the specific project.
  - Details of the supporting structure are indicative only and are the responsibility of the building designer.
  - Thermal break or cavity battens may be required in some circumstances.
  - Underlay selection and building wrap types are the responsibility of the designer, alternative support to galvanised netting should be used in severe coastal environments including when aluminum is used.
  - These details are for Roofing Industries profiles as nominated and may not be applicable to other profiles.
  - This drawing is the copyright of Roofing Industries and can only be copied or reproduced with their permission.
  - Further information can be obtained from the NZ Metal Roof & Wall Cladding Code of Practice [www.metaloof.co.nz](http://www.metaloof.co.nz) & [www.roof.co.nz](http://www.roof.co.nz)
  - Where necessary adjust drawings for purlin battens or cavity battens.
  - Details are for steel based materials, other substrate may require some changes.

Sill flashings stop ended to receive jamb flashings (Dimensions are indicative only & show minimum lap covers)



REFERENCE FLASHINGS:  
NZ METAL ROOF AND WALL CLADDING CODE OF PRACTICE NZMRM,  
WANZ WIS.  
DIMENSIONS ARE INDICATIVE ONLY

## GENERAL NOTES:

- (1) REFER TO E2/A5.1 OR WANZ WIS FOR GENERAL WINDOW OPENING FOR WRAPPING OF FRAMED OPENING PRIOR TO WINDOW INSTALLATION.
- (2) WINDOW PROFILE TO BE SELECTED TO ACHIEVE COVER SHOWN IN DETAILS.
- (3) ARCHITRAVES ARE SHOWN FOR CONSISTENCY ONLY, DETAIL MAY BE USED WITH REBATED LINER.
- (4) WHERE SUPPORT BRACKETS ARE REQUIRED BY THE WINDOW MANUFACTURER TO CARRY THE FRAME AND GLAZING LOADS, THEY MUST BE SUPPLIED AS AN INTEGRAL PART OF THE WINDOW MANUFACTURERS RECOMMENDATIONS.
- (5) LASE WITH WINDOW MANUFACTURER PRIOR TO INSTALLATION.

DETAIL NO. CMDW032C

DATE DRAWN 16/08/12

FILE REFERENCE R1-CMDW032C.DWG

©COPYRIGHT DETAIL 2012

