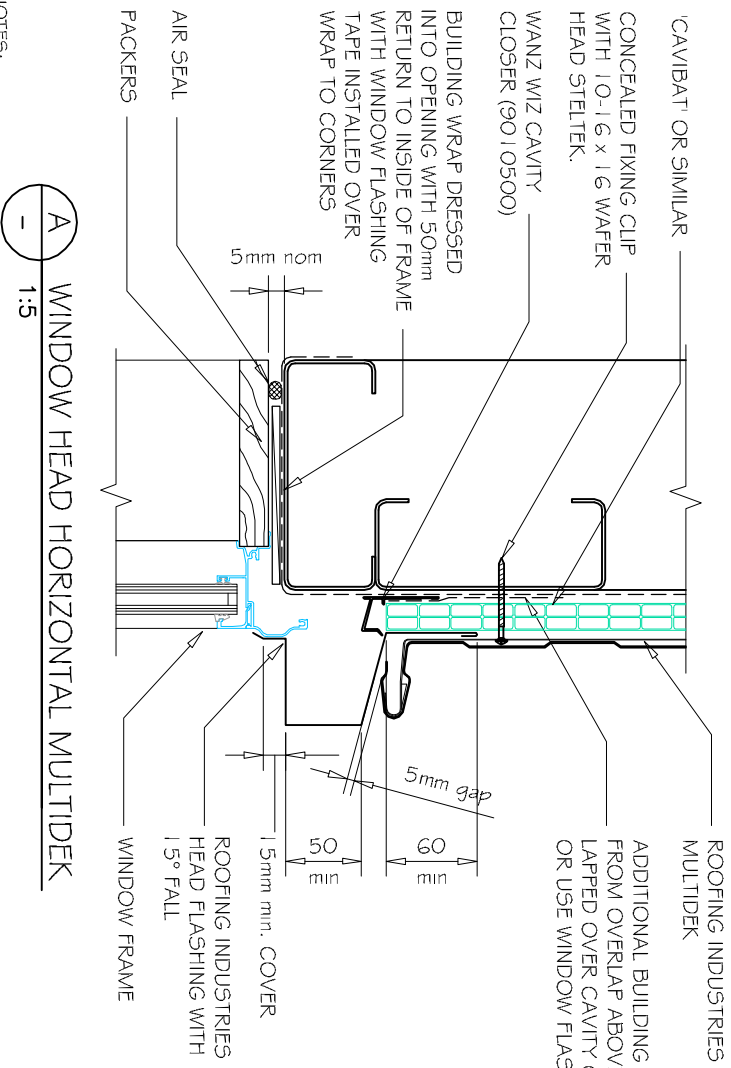


# COMMERCIAL MULTIDEK WINDOW / DOOR HEAD FLASHING FOR HORIZONTAL CLADDING ON CAVITY. (Recessed Window/Door)



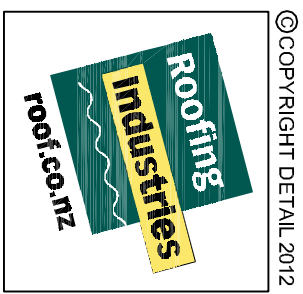
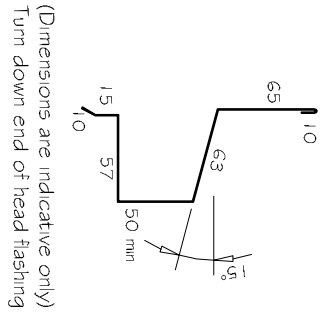
A  
-  
1:5  
WINDOW HEAD HORIZONTAL MULTIDEK

REFERENCE FLASHINGS:  
NZ METAL ROOF AND WALL CLADDING  
CODE OF PRACTICE NZMRM,  
WANZ WIS.  
DIMENSIONS ARE INDICATIVE ONLY

DETAIL NO. CMDW032A  
DATE DRAWN 16/08/12  
FILE REFERENCE RI-CMDW032A.DWG

- GENERAL NOTES:
- (1) REFER TO E2/AS1 OR WANZ WIS FOR GENERAL WINDOW OPENING FOR WRAPPING
  - (2) WINDOW PROFILE TO BE SELECTED TO ACHIEVE COVER SHOWN IN DETAILS.
  - (3) ARCHITRAVES ARE SHOWN FOR CONSISTENCY ONLY, DETAIL MAY BE USED WITH REBATED LINER.
  - (4) WHERE SUPPORT BRACKETS ARE REQUIRED BY THE WINDOW MANUFACTURER TO CARRY THE FRAME AND GLAZING LOADS THEY MUST BE SUPPLIED AS AN INTEGRAL PART OF THE WINDOW MANUFACTURERS RECOMMENDATIONS.
  - (5) LASE WITH WINDOW MANUFACTURER PRIOR TO INSTALLATION.

- NOTES:
- These details are generally in compliance with the NZ Metal Roof & Wall Cladding Code of Practice and in some cases specific details by Roofing Industries!
  - The building designer is ultimately responsible to ensure that details used meet the requirements of the NZ Building Code for the specific project.
  - Details of the supporting structure are indicative only and are the responsibility of the building designer.
  - Thermal break or cavity battens may be required in some circumstances.
  - Underlay selection and building wrap types are the responsibility of the designer.
  - Alternative support to galvanised netting should be used in severe coastal environments including when aluminum is used.
  - These details are for Roofing Industries profiles as nominated and may not be applicable to other profiles.
  - This drawing is the copyright of Roofing Industries and can only be copied or reproduced with their permission.
  - Further information can be obtained from the NZ Metal Roof & Wall Cladding Code of Practice [www.metaldroofer.org.nz](http://www.metaldroofer.org.nz) & [www.roof.co.nz](http://www.roof.co.nz)
  - Where necessary adjust drawings for purlin battens or cavity battens.
  - Details are for steel based materials, other substrate may require some changes.



©COPYRIGHT DETAIL 2012