

COMMERCIAL MULTIDEX WALL CLADDING HORIZONTAL CLADDING BASE

DETAIL NO. CMDW025A

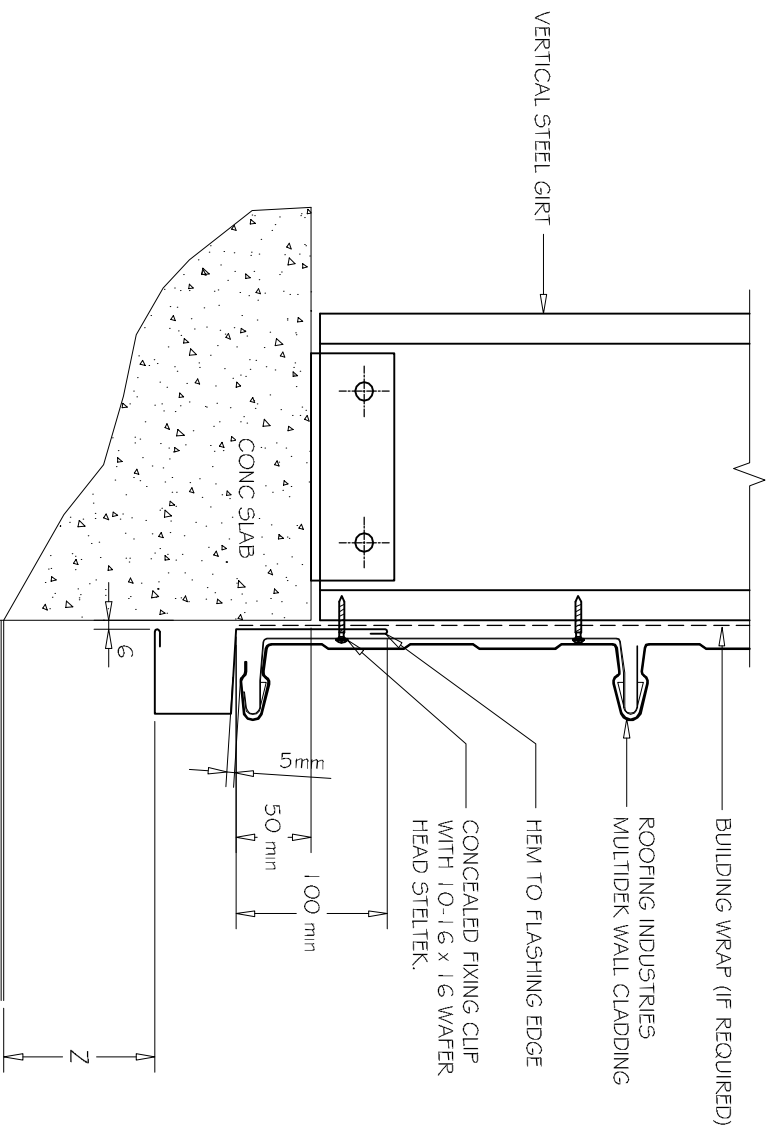
DATE DRAWN 28/02/12

FILE REFERENCE R1-CMDW025A.DWG

SET DOWN	MINIMUM Z
PAVED SURFACE	100mm
UNPAVED SURFACE	175mm

NOTE:

- (1) THE BOTTOM EDGE OF THE CLADDING SHALL OVERLAP THE FOUNDATION WALL
- (2) DFC MUST BE INSTALLED UNDER ALL SURFACES IN CONTACT WITH A CONCRETE SUBSTRATE.



A
—
1:5
BASE DETAIL HORIZONTAL MULTIDEX

NOTES:

- These details are generally in compliance with the NZ Metal Roof & Wall Cladding Code of Practice and in some cases specific details by Roofing Industries.
- The building designer is ultimately responsible to ensure that details used meet the requirements of the NZ Building Code for the specific project.
- Details of the supporting structure are indicative only and are the responsibility of the building designer.
- Thermal break or cavity battens may be required in some circumstances.
- Underlay selection and building wrap types are the responsibility of the designer.
- Alternative supports including galvanised netting should be used in severe coastal environments including when aluminum is used.
- These details are for Roofing Industries profiles as nominated and may not be applicable to other profiles.
- This drawing is the copyright of Roofing Industries and can only be copied or reproduced with their permission.
- Further information can be obtained from the NZ Metal Roof & Wall Cladding Code of Practice www.metalfinish.co.nz & www.roof.co.nz
- Where necessary adjust drawings for purlin battens or cavity battens.
- Details are for steel based materials, other substrate may require some changes.

©COPYRIGHT DETAIL 2012

