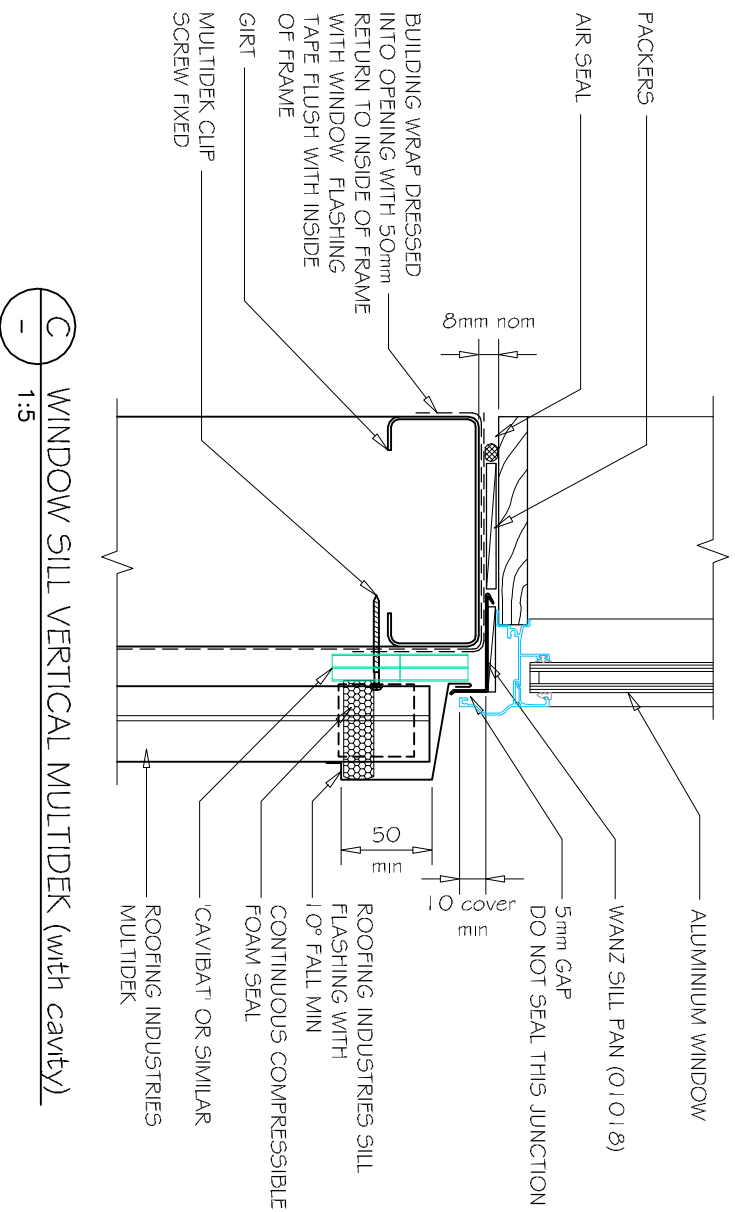


COMMERCIAL WINDOW / DOOR SILL FLASHING FOR MULTIDEK VERTICAL CLADDING ON CAVITY. (Recessed Window / Door)



Ⓢ WINDOW SILL VERTICAL MULTIDEK (with cavity)
1:5

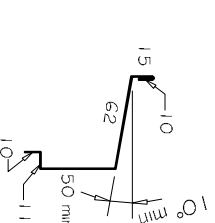
DETAIL NO. CMDW012C-1
DATE DRAWN 16/08/12
FILE REFERENCE RI-CMDW012C-1.DWG

GENERAL NOTES:

- (1) REFER TO E2/A5.1 OR WANZ WIS FOR GENERAL WINDOW OPENING FOR WRAPPING
- (2) WINDOW PROFILE TO BE SELECTED TO ACHIEVE COVER SHOWN IN DETAILS.
- (3) ARCHITRAVES ARE SHOWN FOR CONSISTENCY ONLY, DETAIL MAY BE USED WITH REBATED LINER.
- (4) WHERE SUPPORT BRACKETS ARE REQUIRED BY THE WINDOW MANUFACTURER TO CARRY THE FRAME AND GLAZING LOADS THEY MUST BE SUPPLIED AS AN INTEGRAL PART OF THE WINDOW MANUFACTURERS RECOMMENDATIONS.
- (5) LASE WITH WINDOW MANUFACTURER PRIOR TO INSTALLATION.

REFERENCE FLASHINGS:
NZ METAL ROOF AND WALL CLADDING
CODE OF PRACTICE NZMRM.
WANZ WIS.
DIMENSIONS ARE INDICATIVE ONLY

- NOTES:**
- These details are generally in compliance with the NZ Metal Roof & Wall Cladding Code of Practice and in some cases specific details by Roofing Industries!
 - The building designer is ultimately responsible to ensure that details used meet the requirements of the NZ Building Code for the specific project.
 - Details of the supporting structure are indicative only and are the responsibility of the building designer.
 - Thermal break or cavity battens may be required in some circumstances.
 - Underlay selection and building wrap types are the responsibility of the designer, alternative support to galvanised netting should be used in severe coastal environments including when aluminum is used.
 - These details are for Roofing Industries profiles as nominated and may not be applicable to other profiles.
 - This drawing is the copyright of Roofing Industries and can only be copied or reproduced with their permission.
 - Further information can be obtained from the NZ Metal Roof & Wall Cladding Code of Practice www.metalfloofer.org.nz & www.roof.co.nz
 - Where necessary adjust drawings for purlin battens or cavity battens.
 - Details are for steel based materials, other substrate may require some changes.



Sill flashings stop ended to receive jamb flashings (Dimensions are indicative only & show minimum lap covers)

©COPYRIGHT DETAIL 2012

