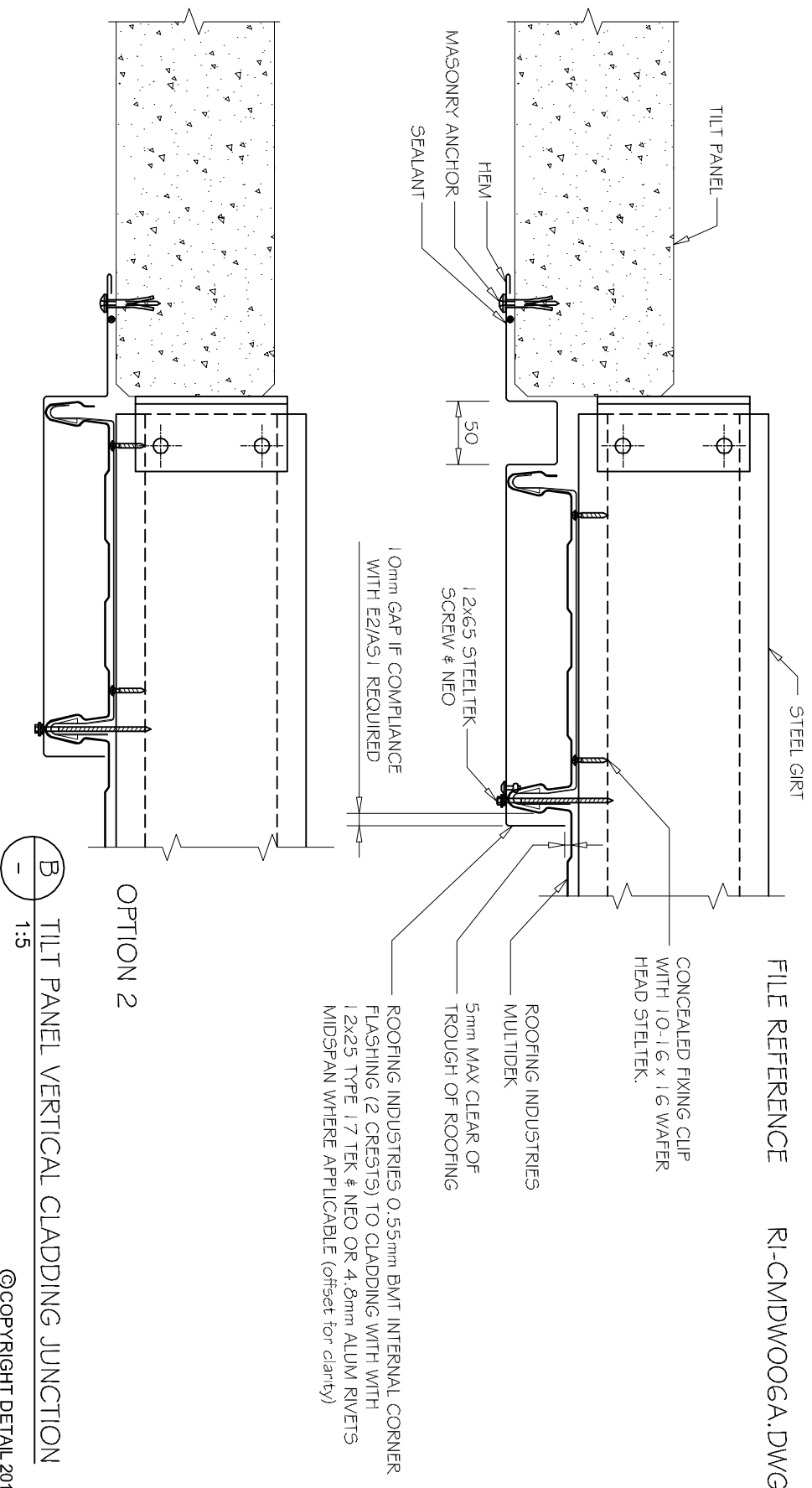


COMMERCIAL MULTIDEK WALL CLADDING TILT PANEL / VERTICAL CLADDING JUNCTION

DETAIL NO. CMDW00GA
 DATE DRAWN 2 / 10 / 21
 FILE REFERENCE R1-CMDW00GA.DWG



B TILT PANEL VERTICAL CLADDING JUNCTION
 1:5

©COPYRIGHT DETAIL 2012

NOTES:

- These details are generally in compliance with the NZ Metal Roof & Wall Cladding Code of Practice and in some cases specific details by Roofing Industries.
- The building designer is ultimately responsible to ensure that details used meet the requirements of the NZ Building Code for the specific project.
- Details of the supporting structure are indicative only and are the responsibility of the building designer.
- Thermal break or cavity battens may be required in some circumstances.
- Underlayment selection and building wrap types are the responsibility of the designer.
- Alternative support to galvanised netting should be used in severe coastal environments including when aluminium is used.
- These details are for Roofing Industries profiles as nominated and may not be applicable to other profiles.
- This drawing is the copyright of Roofing Industries and can only be copied or reproduced with their permission.
- Further information can be obtained from the NZ Metal Roof & Wall Cladding Code of Practice www.metaloofers.org.nz & www.roof.co.nz
- Where necessary adjust drawings for purlin battens or cavity battens.
- Details are for steel based materials, other substrate may require some changes.

