

COMMERCIAL MULTIDEK ROOFING PARAPET HEAD APRON INTERNAL CLADDING

EX 50mm H3. 1 TIMBER CAPPING SUPPORT ON DPC

BUILDING WRAP

ROOFING INDUSTRIES SELECTED CLADDING

ROOFING INDUSTRIES 0.55mm PARAPET FLASHING

TYPE 1 7 12x40 TEK SCREW

MULTIDEK CONCEALED FIXING CLIP

EX 40mm H3. 1 HORIZ BATTENS ON DPC

PROFILED FOAM CLOSURE STRIP (2)

12x65 STEELTEK & NEO WITH SELECTED WASHER SYSTEM FIXED EVERY RIB

R.1. 0.55mm APRON FLASHING NOTCHED TURN-DOWN, GAP 5mm MAX CLEAR OF TROUGH OF ROOFING

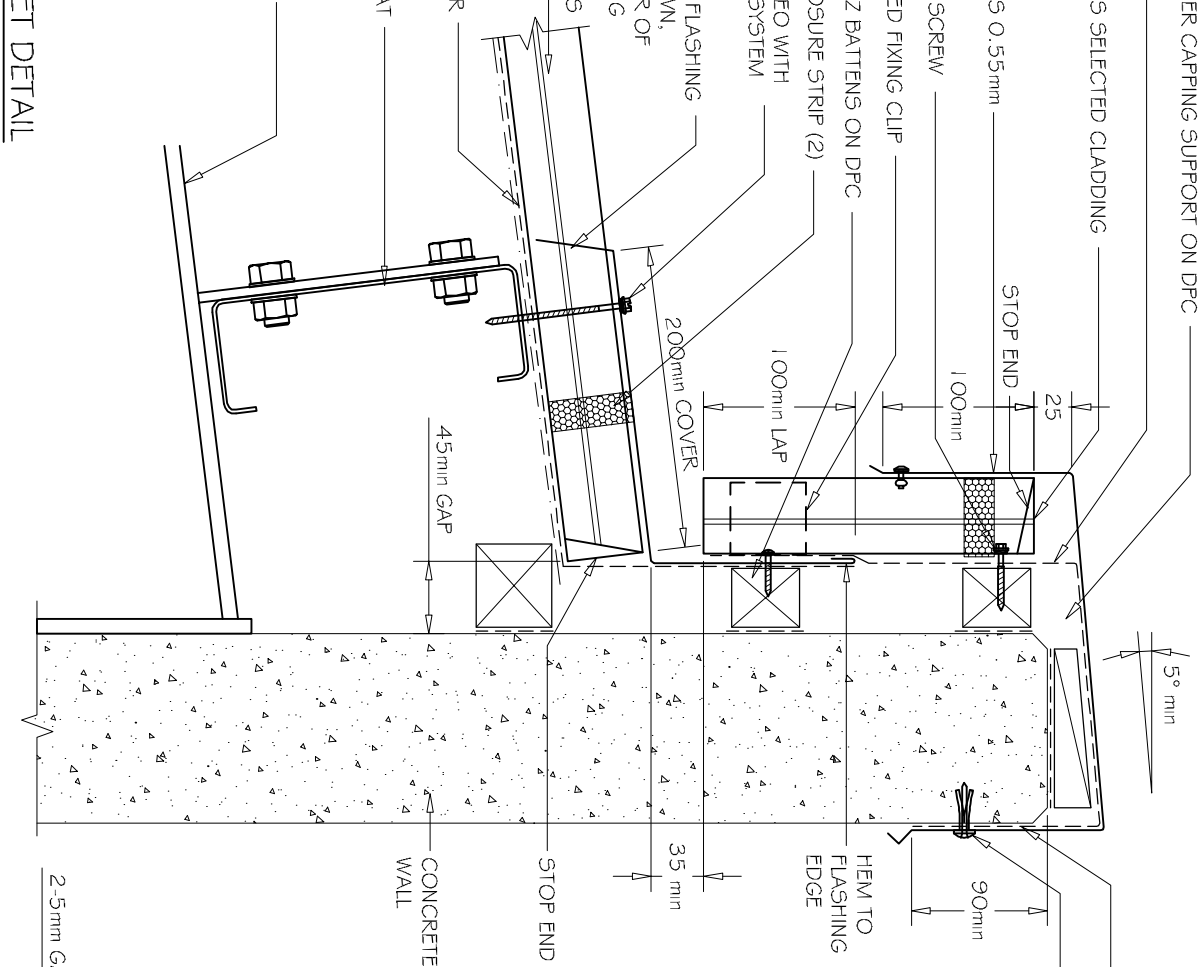
ROOFING INDUSTRIES MULTIDEK

UNDERLAY LAID OVER SAFETY NETTING

STEEL PURLIN & CLEAT

STRUCTURAL STEEL

A PARAPET DETAIL
1:5



DETAIL NO. CMDR008A
DATE DRAWN 21/02/12
FILE REFERENCE RI-CMDR008A.DWG

SEPERATION BARRIER BETWEEN CONCRETE & FLASHING (SELF ADHESIVE TAPE OR SIM)
FIX CAPPING TO CONCRETE WITH MASONRY FASTENERS AT 600mm CRS

NOTE:

- (1) MINIMUM PITCH 3°
- (2) FOAM CLOSURE STRIP ONLY REQUIRED IN HIGH RISK SITUATIONS OF WIND BLOWN MOISTURE ENTERING.
- (3) ALTERNATE FIXING METHOD IS TO USE A MULTIDEK CLIP TO TOP PURLIN & FIX APRON TO SHEET & CLIP WITH 12x25mm TYPE 1 7 SCREW OR 4.8mm min RIVET.

NOTES:

- These details are generally in compliance with the NZ Metal Roof & Wall Cladding Code of Practice and in some cases specific details by Roofing Industries!
- The building designer is ultimately responsible to ensure that details used meet the requirements of the NZ Building Code for the specific project. Details of the supporting structure are indicative only and are the responsibility of the building designer.
- Thermal break or cavity battens may be required in some circumstances. Underlay selection and building wrap types are the responsibility of the designer, Alternative support to galvanised netting should be used in severe coastal environments including when aluminium is used.
- These details are for Roofing Industries profiles as nominated and may not be applicable to other profiles.
- This drawing is the copyright of Roofing Industries and can only be copied or reproduced with their permission.
- Further information can be obtained from the NZ Metal Roof & Wall Cladding Code of Practice www.metaloofers.org.nz & www.roof.co.nz
- Where necessary adjust drawings for purlin battens or cavity battens. Details are for steel based materials, other substrate may require some changes.

