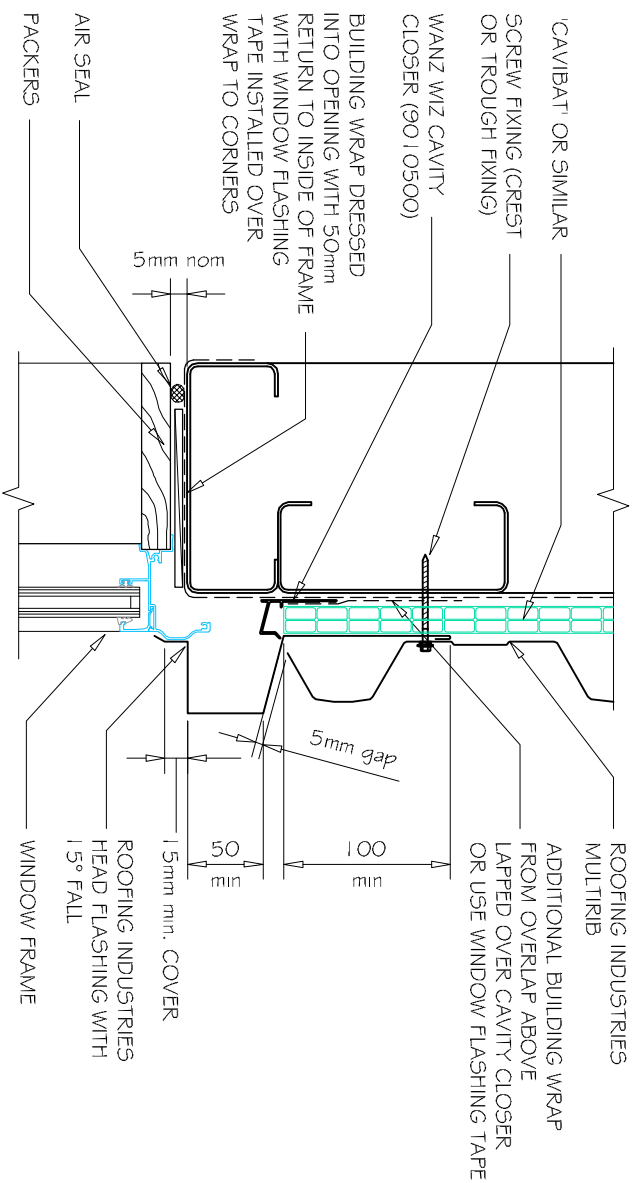


COMMERCIAL MULTIRIB WINDOW / DOOR HEAD FLASHING FOR HORIZONTAL CLADDING ON CAVITY. (Recessed Window/Door)

DETAIL NO. CMRW032A

DATE DRAWN 16/08/12

FILE REFERENCE R1-CMRW032A.DWG



A WINDOW HEAD HORIZONTAL MULTIRIB 1:5

NOTES:

- These details are generally in compliance with the NZ Metal Roof & Wall Cladding Code of Practice and in some cases specific details by Roofing Industries.
- The building designer is ultimately responsible to ensure that details used meet the requirements of the NZ Building Code for the specific project.
- Details of the supporting structure are indicative only and are the responsibility of the building designer.
- Thermal break or cavity battens may be required in some circumstances.
- Underlay selection and building wrap types are the responsibility of the designer, alternative support to galvanised netting should be used in severe coastal environments including when aluminum is used.
- These details are for Roofing Industries' profiles as nominated and may not be applicable to other profiles.
- This drawing is the copyright of Roofing Industries' and can only be copied or reproduced with their permission.
- Further information can be obtained from the NZ Metal Roof & Wall Cladding Code of Practice www.metlroofer.org.nz & www.roof.co.nz
- Where necessary adjust drawings for purlin battens or cavity battens.
- Details are for steel based materials, other substrate may require some changes.

- GENERAL NOTES:**
- (1) REFER TO E2/AS1 OR WANS W12 FOR GENERAL WINDOW OPENING FOR WRAPPING
 - (2) WINDOW PROFILE TO BE SELECTED TO ACHIEVE COVER SHOWN IN DETAILS.
 - (3) ARCHITRAVES ARE SHOWN FOR CONSISTENCY ONLY, DETAIL MAY BE USED WITH REBATED LINER.
 - (4) WHERE SUPPORT BRACKETS ARE REQUIRED BY THE WINDOW MANUFACTURER TO CARRY THE FRAME AND GLAZING LOADS, THEY MUST BE SUPPLIED AS AN INTEGRAL PART OF THE WINDOW MANUFACTURERS RECOMMENDATIONS.
 - (5) LASE WITH WINDOW MANUFACTURER PRIOR TO INSTALLATION.

REFERENCE FLASHINGS:
 NZ METAL ROOF AND WALL CLADDING CODE OF PRACTICE NZMRM.
 WANS W12.
 DIMENSIONS ARE INDICATIVE ONLY

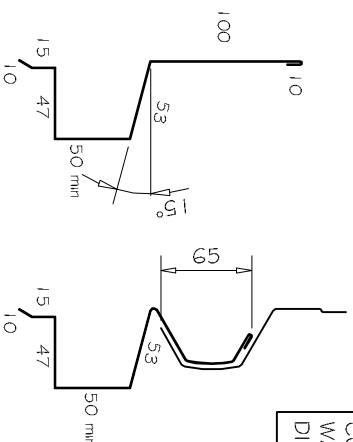


FIG. 1. FIG. 2.

(Dimensions are indicative only)
 Turn down end of head flashing.
 At end of head flashing under sheet may need flattening or carefully silt and seal.
 Alternatively use head flashing to suit profile (Figure 2)

©COPYRIGHT DETAIL 2012

