

# COMMERCIAL MULTIRIB ROOFING 125 BOX GUTTER DETAIL (Internal Bracket)

DETAIL NO.

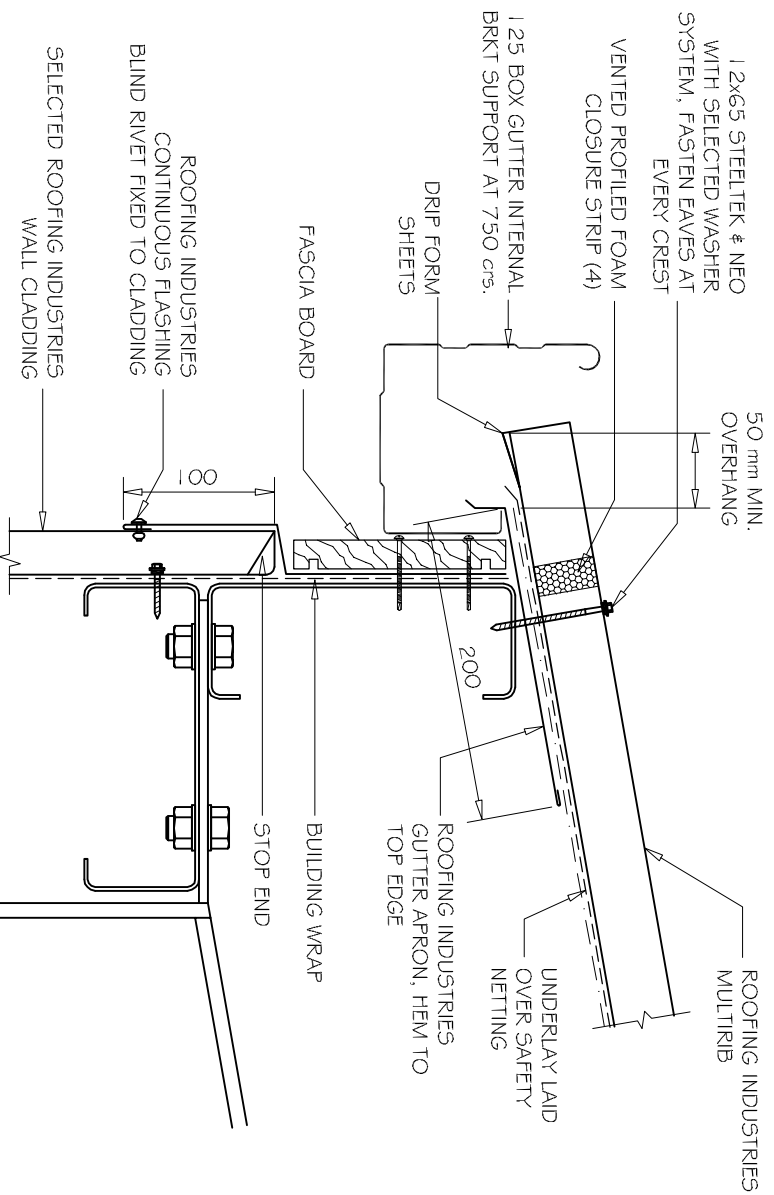
CMRRO30A

DATE DRAWN

01/03/12

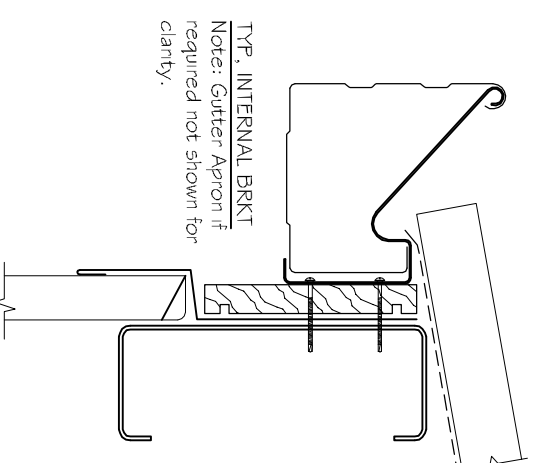
FILE REFERENCE

R1-CMRRO30A.DWG



NOTES:

- (1) MINIMUM PITCH 3°
- (2) FOR CAPACITY CALCULATION REFER TO NZMRM CODE OF PRACTICE.
- (3) EXTERNAL BRACKETS ARE RECOMMENDED TO ALL GUTTERS IN AREAS SUBJECT TO SNOW. REFER DWG CMRRO30B
- (4) FOAM CLOSURE STRIP ONLY REQUIRED IN HIGH RISK SITUATIONS OF WIND BLOWN MOISTURE ENTERING OR IF BIRD OR VERMIN PROOFING IS REQUIRED.



NOTES:

- These details are generally in compliance with the NZ Metal Roof & Wall Cladding Code of Practice and in some cases specific details by Roofing Industries.
- The building designer is ultimately responsible to ensure that details used meet the requirements of the NZ Building Code for the specific project.
- Details of the supporting structure are indicative only and are the responsibility of the building designer.
- Thermal break or cavity battens may be required in some circumstances.
- Underlay selection and building wrap types are the responsibility of the designer, Alternative support to galvanised netting should be used in severe coastal environments including when aluminium is used.
- These details are for Roofing Industries profiles as nominated and may not be applicable to other profiles.
- This drawing is the copyright of 'Roofing Industries' and can only be copied or reproduced with their permission.
- Further information can be obtained from the NZ Metal Roof & Wall Cladding Code of Practice [www.metalofter.org.nz](http://www.metalofter.org.nz) & [www.roof.co.nz](http://www.roof.co.nz)
- Where necessary adjust drawings for purlin battens or cavity battens.
- Details are for steel based materials, other substrate may require some changes.



125 BOX GUTTER MULTIRIB PROFILE  
1:5

©COPYRIGHT DETAIL 2012

