

# COMMERCIAL MULTIRIB ROOFING TYPICAL ROOF (Insulated)

DETAIL NO.

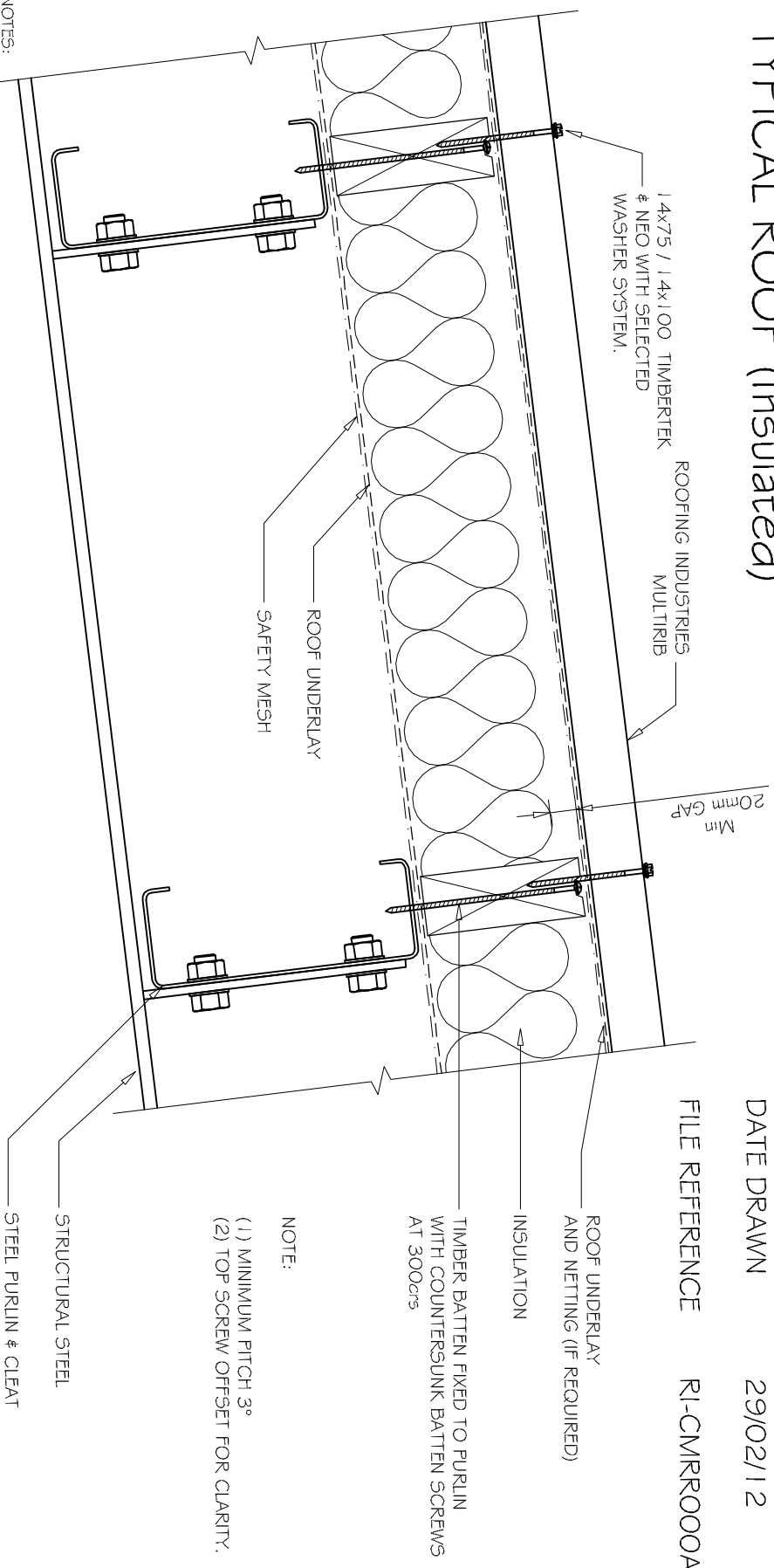
CMR000A-1

DATE DRAWN

29/02/12

FILE REFERENCE

RI-CMR000A-1.DWG



NOTE:

- (1) MINIMUM PITCH 3°
- (2) TOP SCREW OFFSET FOR CLARITY.

**NOTES:**

- These details are generally in compliance with the NZ Metal Roof & Wall Cladding Code of Practice and in some cases specific details by Roofing Industries.
- The building designer is ultimately responsible to ensure that details used meet the requirements of the NZ Building Code for the specific project.
- Details of the supporting structure are indicative only and are the responsibility of the building designer.
- Thermal break or cavity battens may be required in some circumstances.
- Underlay selection and building wrap types are the responsibility of the designer, alternative support to galvanised netting should be used in severe coastal environments including when aluminum is used.
- These details are for Roofing Industries profiles as nominated and may not be applicable to other profiles.
- This drawing is the copyright of 'Roofing Industries' and can only be copied or reproduced with their permission.
- Further information can be obtained from the NZ Metal Roof & Wall Cladding Code of Practice [www.metaloof.co.nz](http://www.metaloof.co.nz) & [www.roof.co.nz](http://www.roof.co.nz)
- Where necessary adjust drawings for purlin battens or cavity battens.
- Details are for steel based materials, other substrate may require some changes.

A  
—  
1:5  
TYPICAL ROOF (Insulated)

©COPYRIGHT DETAIL 2012

