

SOLTIS

86



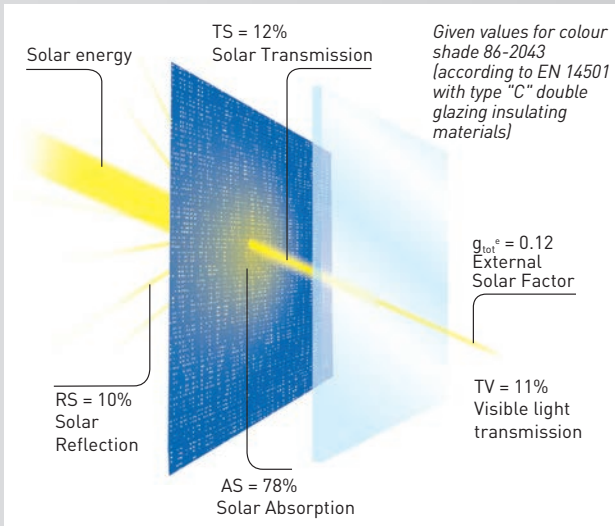
Serge Ferrari 

MAIN FEATURES

- Perfect compromise between thermal protection and visual comfort
- Excellent outward visibility
- Weather and UV resistance
- Lightweight, durable and 100% recyclable

APPLICATIONS

- Facade blinds
- Conservatory and glassroof blinds
- Shadesails



Installed externally, Soltis 86 blocks up to 88% of the solar radiation

Thermal protection and light control

Soltis 86 offers a mesh opening, ideal for combining:

- efficient solar protection,
- sufficient natural light contribution to ensure occupier well-being.

Soltis 86 therefore plays a full part in:

- building thermal control,
- creating pleasant, appropriate light environments.



Seamless large dimensions possible

Matchless transparency

Soltis 86's micro-ventilated texture ensures:

- excellent visual contact with the exterior: the view is not hidden,
- visual comfort appreciated in many architectural situations.

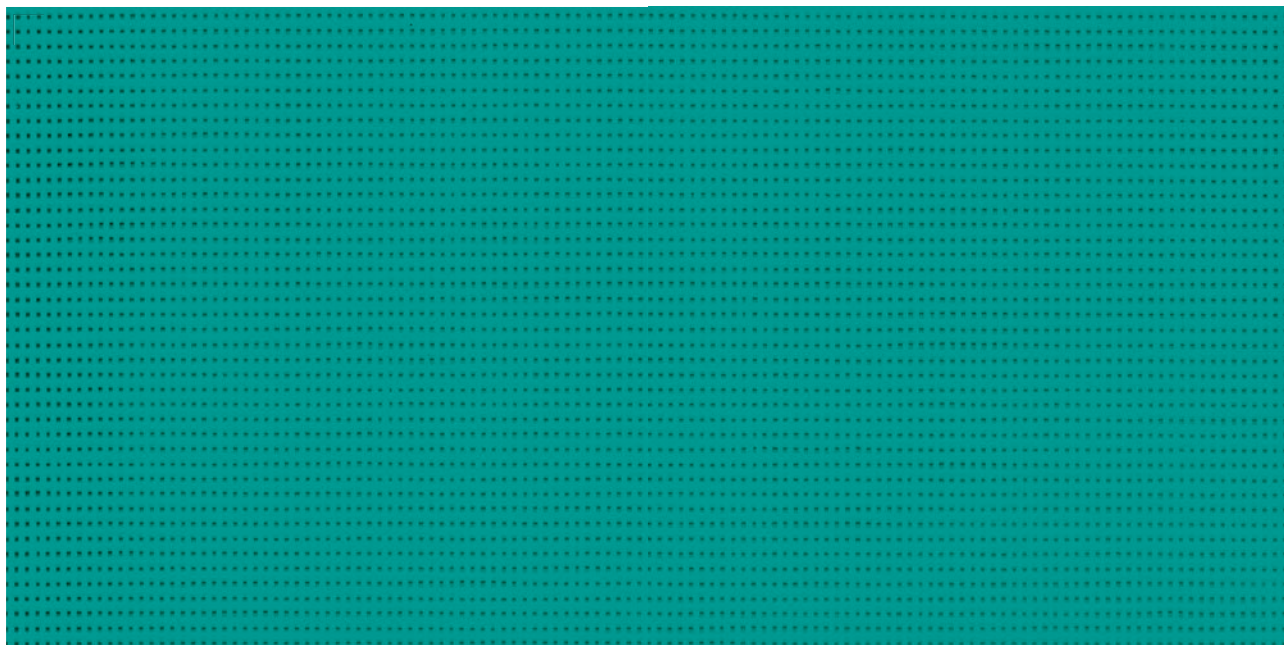


Colour harmony for combining blinds, textile facades and permanent awnings

Harmonised ranges

All Soltis 86 colours are coordinated with Soltis 92 to:

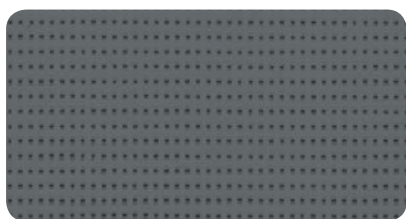
- coordinate all facades of a building,
- satisfy visual comfort requirements for each facade orientation,
- regulate thermal protection to provide energy savings.



Intense turquoise

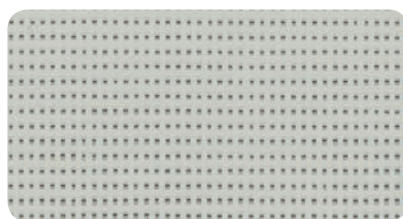
86-50271

Emerging colours



Concrete

86-2167



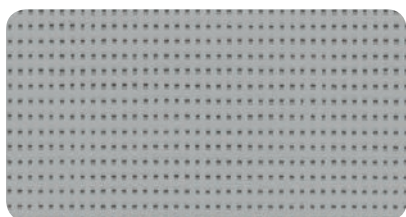
Boulder

86-2171*




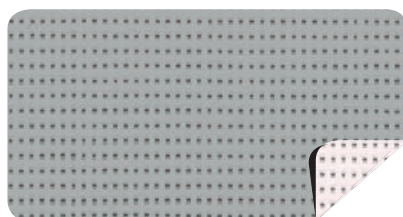
White

 86-2044*




Alu/Alu

 86-2048



Alu/Oat

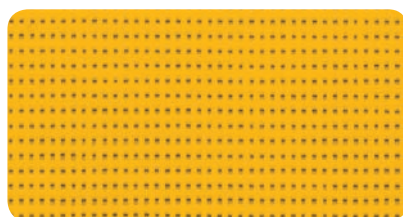
 86-2046*

Design illusion



Bamboo

86-50333



Buttercup

86-2166



Orange

86-8204

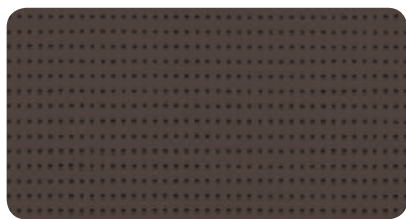


Plum

86-50336

* Also available in 267 cm width

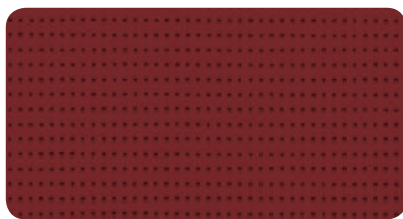
Evolving with time



Bronze

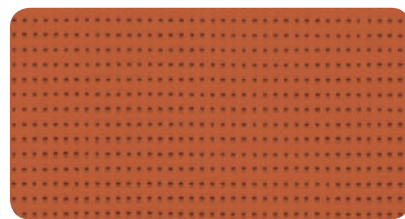


86-2043*



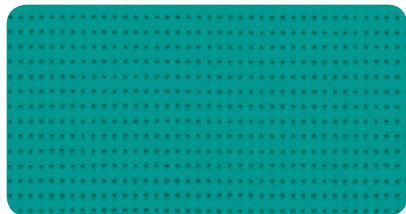
Muscat

86-50260



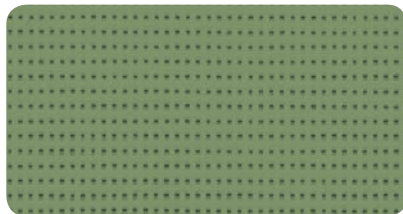
Caramel

86-50261



Intense turquoise

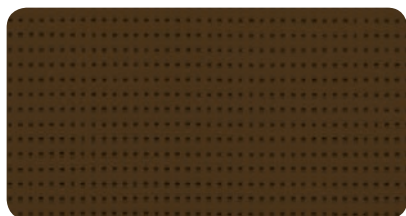
86-50271



Moss green

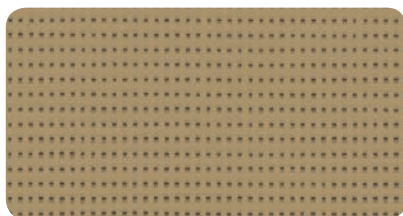
86-2158

Body language



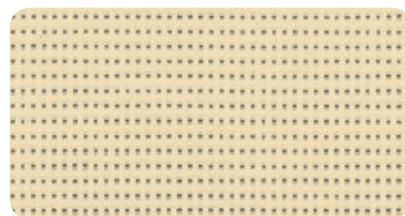
Cocoa

86-2148



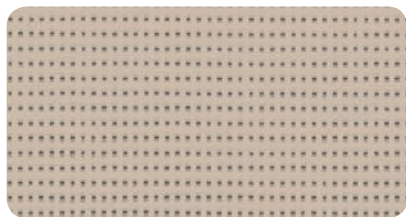
Pepper

86-2012*



Champagne

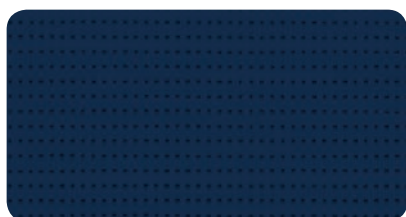
86-2175



Sandy beige

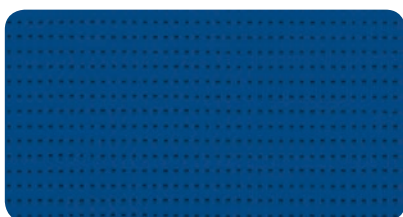
86-2135*

Distinction



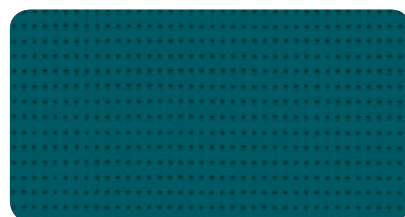
Navy

86-50342



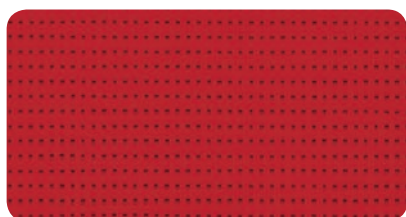
Midnight blue

86-2161



Dark teal

86-50264



Red

86-8255



Black



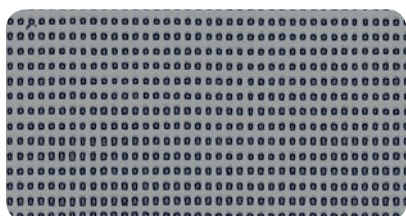
86-2053*



Anthracite



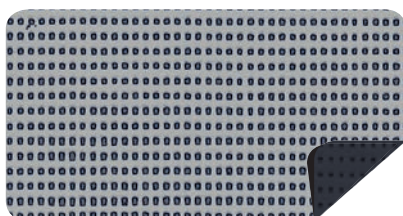
86-2047*



Beaten-metal



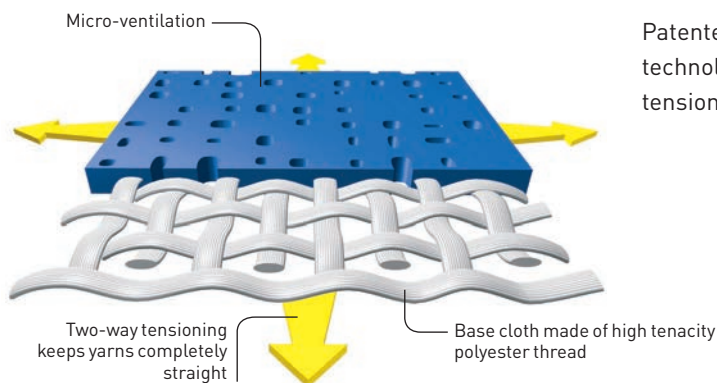
86-2045*



Alu/Anthracite

86-2068

Exclusive Précontraint Serge Ferrari® technology



Patented worldwide, Précontraint Serge Ferrari® technology involves keeping the composite under tension throughout the manufacturing cycle.

Strength characteristics

- Exceptional dimensional stability
- Long-term strength
- Greater coating thickness at the top of the yarns
- Exceptional flatness

Benefits

- **No material deformation during installation or usage**
- **No elongation, tear resistant**
- **Long-term strength and aesthetic quality**
- **Thinness**
- **Smooth finish, easy maintenance**
- **Compactness, easy rolling**

NF Toiles certification

- The French "NF Toiles" label guarantees that Soltis 86 maintain a high level of quality and homogeneity.
- Certified references meet thermo-optical, strength and durability requirements stipulated for the "NF Toiles" label.
- Certification application pending for new colours (solar and light properties quoted provisionally).



Solar and light properties (EN 14501)

References	TS	RS	AS	TV n-h	TV n-n	g _{tot} ^e	g _{tot} ⁱ	NCS Codification
86-2012	18	27	55	17	16	0.15	0.48	S 4010 Y 30 R
86-2043	12	10	78	11	13	0.12	0.53	-
86-2044	32	59	9	30	14	0.21	0.38	S 0500 N
86-2045	14	29	57	14	13	0.12	0.47	-
86-2046 A	21	43	36	20	14	0.16	0.43	-
86-2046 B	19	58	23	19	14	0.14	0.38	-
86-2047	16	7	77	16	15	0.14	0.54	-
86-2048	22	42	36	22	16	0.17	0.43	-
86-2053	15	5	80	15	13	0.14	0.54	S 8500 N
86-2068 A	16	35	49	15	15	0.13	0.45	-
86-2068 B	16	7	77	15	15	0.14	0.54	-
86-2135	20	41	39	20	16	0.15	0.43	S 2005 Y 50 R
86-2148	14	13	73	14	13	0.13	0.52	S 7010 Y 30 R
86-2158	15	25	60	14	12	0.13	0.48	S 4020 G 30 Y
86-2161	16	17	67	14	14	0.14	0.51	S 5040 R 80 B
86-2166	30	45	25	26	15	0.21	0.42	S 0570 Y 10 R
86-2167	15	17	68	14	13	0.13	0.51	S 6005 R 80 B
86-2171	19	39	42	17	14	0.15	0.44	S 2502 B
86-2175	28	57	15	26	14	0.19	0.39	S 0505 Y 20 R
86-8204	27	41	32	19	14	0.19	0.44	S 0585 Y 40 R
86-8255	23	24	53	17	16	0.18	0.49	S 1580 Y 90 R
86-50260	15	13	72	14	13	0.14	0.52	S 5040 R
86-50261	21	35	44	15	14	0.16	0.45	S 3050 Y 60 R
86-50264	17	11	72	16	16	0.15	0.52	S 6030 B 30 G
86-50271	21	34	45	15	14	0.16	0.46	-
86-50333	22	32	46	19	15	0.17	0.46	S 2070 G 70 Y
86-50336	19	15	66	15	14	0.16	0.51	S 7020 R 30 B
86-50342	16	9	75	14	14	0.14	0.53	S 2020 R 80 B

A: Aluminium face exposed to the sun
B: Coloured face exposed to the sun

TS: Solar Transmission (%)
RS: Solar Reflection (%)
AS: Solar Absorption (%)
TS + RS + AS = 100% of incident energy
g_{tot}^e: External solar factor
g_{tot}ⁱ: Internal Solar Factor
Type "C" glazing: insulating, slightly emissive double glazing in position 3 (4 + 16 + 4; argon-filled).

TV n-h: Normal-hemispherical visible light transmission (%)
TV n-n: Normal-normal visible light transmission (%)

Technical properties	Soltis 86	Standards
Weight	380 g/m ²	EN ISO 2286-2
Thickness	0.43 mm	
Width	177 cm - 267 cm	
Length of rolls		
Standard format length in 177 cm	50 lm	
Standard format length in 267 cm	40 lm	
Physical properties		
Tensile strength (warp/weft)	230/160 daN/ 5 cm	EN ISO 1421
Tear strength (warp/weft)	45/20 daN	DIN 53.363
Fungistatic treatment	Degree 0, excellent	EN ISO 846-A
Flame retardancy		
Rating	B1/DIN 4102-1 • BS 7837 • BS 5867 • SCHWERBRENNBAR-Q1-Tr1/ONORM A 3800-1 • CLASSE 1/UNI 9177-87 • M1/UNE 23.727-90 • VKF 5.2/SN 198898 • 1530.3/AS/NZS • G1/GOST 30244-94 • METHOD 1/NFPA 701 • CSFM T19 • CLASS A/ASTM E84	
Euroclass	B-s2,d0/EN 13501-1	
Management systems		
for Quality	ISO 9001	
for the Environment	ISO 14001	
Certifications, labels, guarantees, recycling		



The technical data above are averaged values with a +/- 5% tolerance.

The buyer of our products is fully responsible for their application and their transformation with regard to any possible third party. The buyer of our products is responsible for their implementation and installation according to the standards, workmanship and safety regulations in force in destination countries. For information on our contractual warranty, please refer to the relevant terms and conditions.

The values quoted above represent results of tests performed in compliance with common design practices and are provided for information only to enable customers to make the best use of our products. Our products are subject to changes based on technical advances and we reserve the right to modify their characteristics at any time. The buyer of our products is responsible for checking the validity of the above data.

TOOLS AND SERVICES

- ACV and FDES (Health and Environmental Datasheet) available on request
- Personalised service for simulating your project's thermal performance and related Soltis solar protection systems: please contact your Serge Ferrari representative
- Tool for evaluating energy savings generated by Soltis solar protection systems: www.textnergie.org
- Document and photo libraries: www.sergeferrari.com

→ Contact

- Headquarters:
+ 33 (0)4 74 97 41 33
- Your local representative:
www.sergeferrari.com

→ TEXYLOOP®

- The Serge Ferrari operational recycling chain
- Secondary raw materials of high intrinsic value compatible with multiple processes
- A quantified response to combat depletion of natural resources

www.texyloop.com