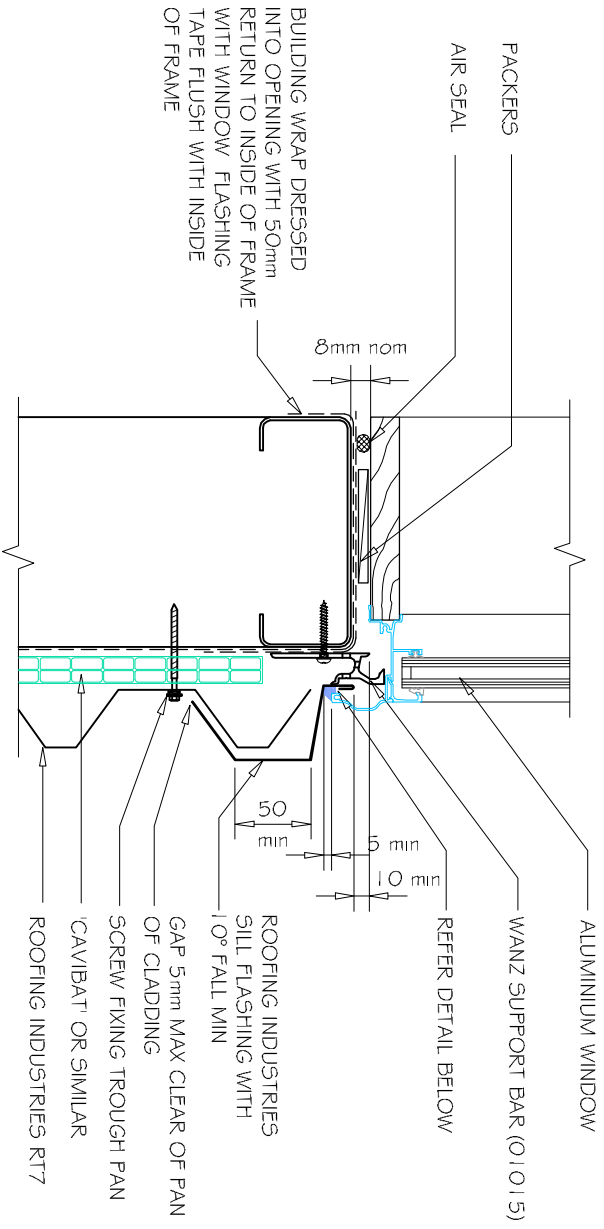
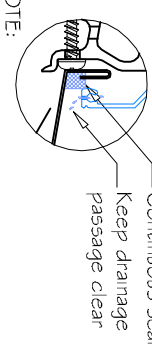
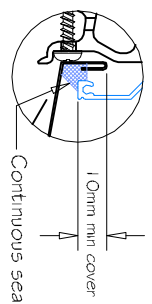
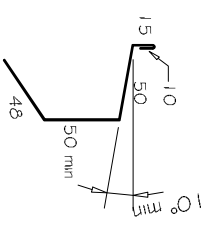


COMMERCIAL RT7 WINDOW / DOOR SILL FLASHING FOR HORIZONTAL CLADDING ON CAVITY. (Recessed Window/Door - Cavity)



C
WINDOW SILL HORIZONTAL RT7
1:5



- GENERAL NOTES:
- (1) REFER TO E2/A5.1 OR WANSZ WIS FOR GENERAL WINDOW OPENING FOR WRAPPING
 - (2) WINDOW PROFILE TO BE SELECTED TO ACHIEVE COVER SHOWN IN DETAILS.
 - (3) ARCHITRAVES ARE SHOWN FOR CONSISTENCY ONLY, DETAIL MAY BE USED WITH REBATED LINER.
 - (4) WHERE SUPPORT BRACKETS ARE REQUIRED BY THE WINDOW MANUFACTURER TO CARRY THE FRAME AND GLAZING LOADS, THEY MUST BE SUPPLIED AS AN INTEGRAL PART OF THE WINDOW MANUFACTURERS RECOMMENDATIONS.
 - (5) LASE WITH WINDOW MANUFACTURER PRIOR TO INSTALLATION.

NOTE:
Sill sealing method for flange end type drainage systems

Sill flashings stop ended to receive jamb flashings (Dimensions are indicative only & show minimum lap covers)

REFERENCE FLASHINGS:
NZ METAL ROOF AND WALL CLADDING
CODE OF PRACTICE NZMRM.
WANSZ WIS.
DIMENSIONS ARE INDICATIVE ONLY

- NOTES:
- These details are generally in compliance with the NZ Metal Roof & Wall Cladding Code of Practice and in some cases specific details by Roofing Industries.
 - The building designer is ultimately responsible to ensure that details used meet the requirements of the NZ Building Code for the specific project.
 - Details of the supporting structure are indicative only and are the responsibility of the building designer.
 - Thermal break or cavity battens may be required in some circumstances.
 - Underlayment selection and building wrap types are the responsibility of the designer, Alternative support to galvanised netting should be used in severe coastal environments including when aluminum is used.
 - These details are for Roofing Industries profile/s as nominated and may not be applicable to other profiles.
 - This drawing is the copyright of Roofing Industries and can only be copied or reproduced with their permission.
 - Further information can be obtained from the NZ Metal Roof & Wall Cladding Code of Practice www.metlroofer.org.nz & www.roof.co.nz
 - Where necessary adjust drawings for purlin battens or cavity battens.
 - Details are for steel based materials, other substrate may require some changes.

©COPYRIGHT DETAIL 2012

