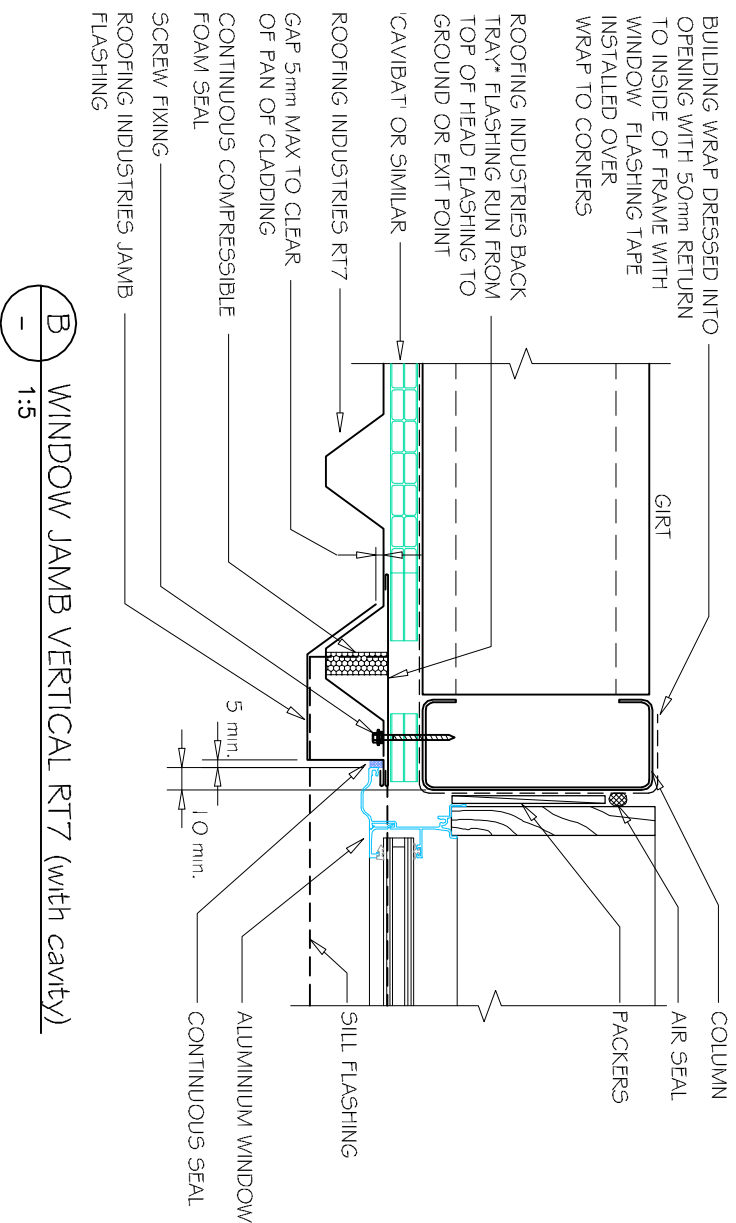


# COMMERCIAL WINDOW / DOOR JAMB FLASHING FOR RT7 VERTICAL CLADDING ON CAVITY. (Recessed Window/Door)



## NOTES:

- These details are generally in compliance with the NZ Metal Roof & Wall Cladding Code of Practice and in some cases specific details by Roofing Industries.
- The building designer is ultimately responsible to ensure that details used meet the requirements of the NZ Building Code for the specific project.
- Details of the supporting structure are indicative only and are the responsibility of the building designer.
- Thermal break or cavity battens may be required in some circumstances.
- Underlay selection and building wrap types are the responsibility of the designer, Alternative support to galvanised netting should be used in severe coastal environments including when aluminum is used.
- These details are for Roofing Industries profiles as nominated and may not be applicable to other profiles.
- This drawing is the copyright of Roofing Industries and can only be copied or reproduced with their permission.
- Further information can be obtained from the NZ Metal Roof & Wall Cladding Code of Practice [www.metlroofer.org.nz](http://www.metlroofer.org.nz) & [www.roof.co.nz](http://www.roof.co.nz)
- Where necessary adjust drawings for purlin battens or cavity battens.
- Details are for steel based materials, other substrate may require some changes.

DETAIL NO. CRT7W012B-1

DATE DRAWN 16/08/12

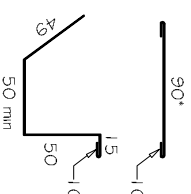
FILE REFERENCE RI-CRT7W012B-1.DWG

## GENERAL NOTES:

- (1) REFER TO E2/A5 I OR WANZ WIS FOR GENERAL WINDOW OPENING FOR WRAPPING
- (2) WINDOW PROFILE TO BE SELECTED TO ACHIEVE COVER SHOWN IN DETAILS.
- (3) ARCHITRAVES ARE SHOWN FOR CONSISTENCY ONLY, DETAIL MAY BE USED WITH REBATED LINER.
- (4) WHERE SUPPORT BRACKETS ARE REQUIRED BY THE WINDOW MANUFACTURER TO CARRY THE FRAME AND GLAZING LOADS THEY MUST BE SUPPLIED AS AN INTEGRAL PART OF THE WINDOW MANUFACTURERS RECOMMENDATIONS.
- (5) LASE WITH WINDOW MANUFACTURER PRIOR TO INSTALLATION.

## REFERENCE FLASHINGS:

NZ METAL ROOF AND WALL CLADDING  
CODE OF PRACTICE NZMRM.  
WANZ WIS.  
DIMENSIONS ARE INDICATIVE ONLY



\* Back tray size may require to increase to ensure coverage at ends of head flashings.  
(Dimensions are indicative only)  
Turn down end of head flashing

©COPYRIGHT DETAIL 2012

