

COMMERCIAL RT7 WALL CLADDING VERTICAL CLADDING OVER PRECAST PANEL

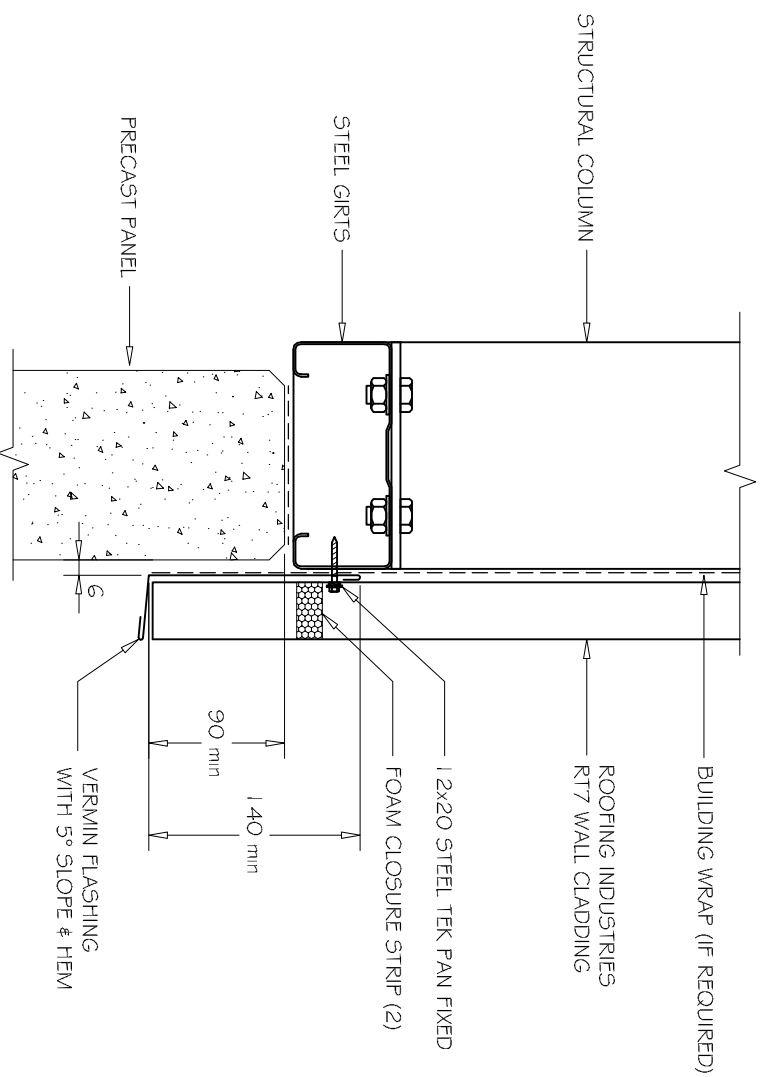
DETAIL NO. CRT7W003A

DATE DRAWN 28/03/12

FILE REFERENCE R1-CRT7W003A.DWG

NOTE:

- (1) DPC MUST BE INSTALLED UNDER ALL SURFACES IN CONTACT WITH A CONCRETE SUBSTRATE.
- (2) FOAM CLOSURE STRIP ONLY REQUIRED IN HIGH RISK SITUATIONS OF WIND BLOWN MOISTURE OR DRAFTS ENTERING OR IF BIRD OR VERMIN PROOFING IS REQUIRED.



A
—
1:5

BASE DETAIL VERTICAL RT7

NOTES:

- These details are generally in compliance with the NZ Metal Roof & Wall Cladding Code of Practice and in some cases specific details by Roofing Industries.
- The building designer is ultimately responsible to ensure that details used meet the requirements of the NZ Building Code for the specific project.
- Details of the supporting structure are indicative only and are the responsibility of the building designer.
- Thermal break or cavity battens may be required in some circumstances.
- Underlay selection and building wrap types are the responsibility of the designer, alternative support to galvanised netting should be used in severe coastal environments including when aluminum is used.
- These details are for Roofing Industries profiles as nominated and may not be applicable to other profiles.
- This drawing is the copyright of Roofing Industries and can only be copied or reproduced with their permission.
- Further information can be obtained from the NZ Metal Roof & Wall Cladding Code of Practice www.metlroofer.org.nz & www.roof.co.nz
- Where necessary adjust drawings for purlin battens or cavity battens.
- Details are for steel based materials, other substrate may require some changes.

©COPYRIGHT DETAIL 2012

