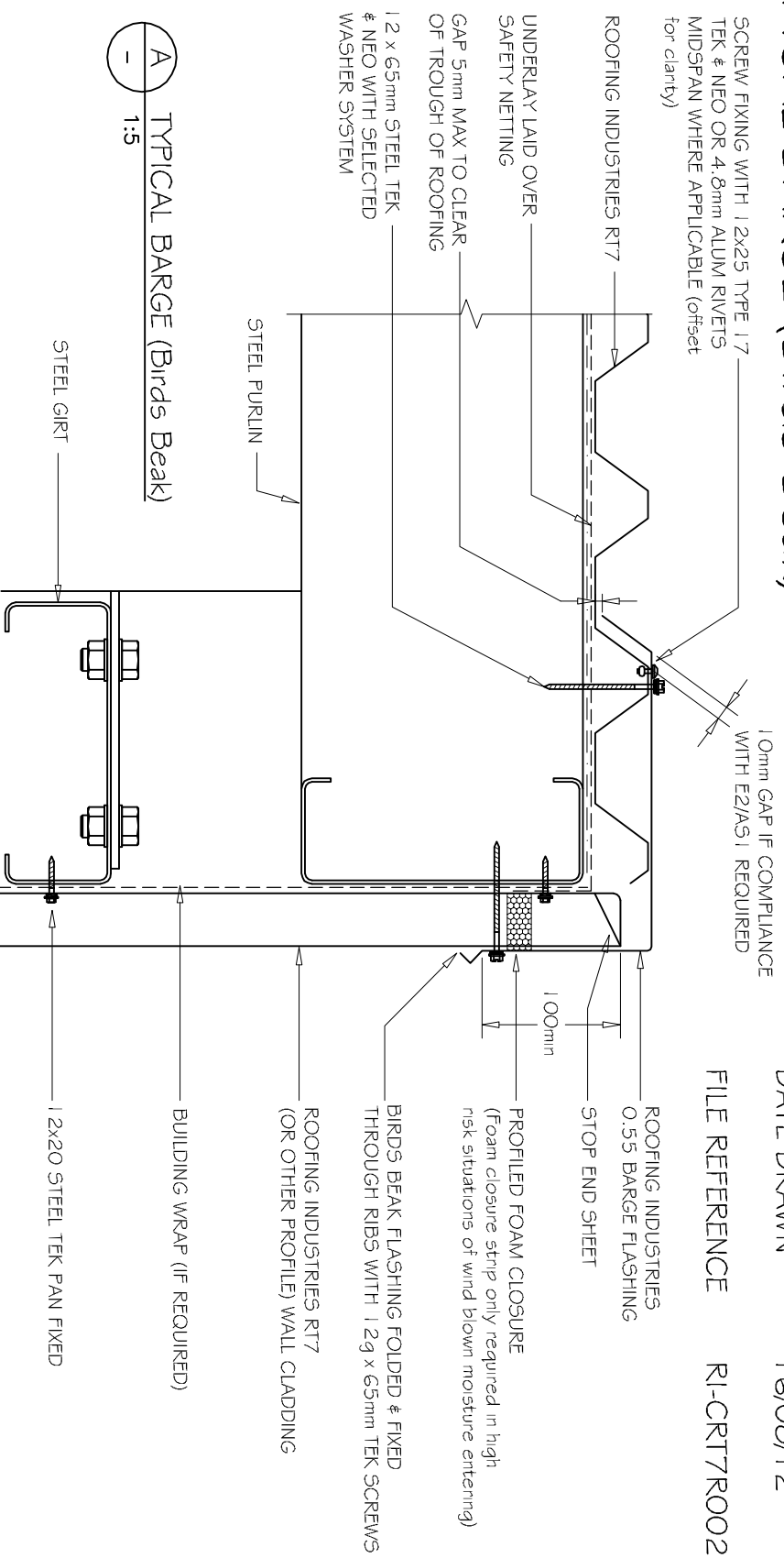


COMMERCIAL RT7 ROOFING TYPICAL BARGE (Birds Beak)

DETAIL NO. CRT7002B

DATE DRAWN 16/08/12

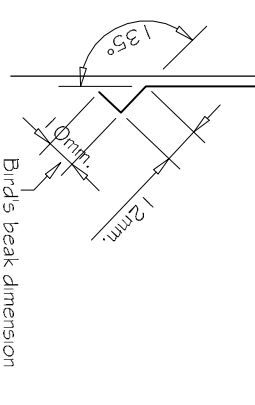
FILE REFERENCE R1-CRT7R002B.DWG



(A) TYPICAL BARGE (Birds Beak)
1:5

NOTES:

- These details are generally in compliance with the NZ Metal Roof & Wall Cladding Code of Practice and in some cases specific details by Roofing Industries.
- The building designer is ultimately responsible to ensure that details used meet the requirements of the NZ Building Code for the specific project.
- Details of the supporting structure are indicative only and are the responsibility of the building designer.
- Thermal break or cavity battens may be required in some circumstances.
- Underlay selection and building wrap types are the responsibility of the designer, Alternatives including galvanized netting should be used in severe coastal environments including when aluminum is used.
- These details are for Roofing Industries profiles as nominated and may not be applicable to other profiles.
- This drawing is the copyright of Roofing Industries and can only be copied or reproduced with their permission.
- Further information can be obtained from the NZ Metal Roof & Wall Cladding Code of Practice www.metaloof.co.nz & www.roof.co.nz
- Where necessary adjust drawings for purlin battens or cavity battens.
- Details are for steel based materials, other substrate may require some changes.



BIRDS BEAK at bottom edge of vertical flashing

Birds beak dimension may vary between manufacturing locations.

