

CONQUEROR ARCHITECTURAL WALL PANEL

TECHNICAL SPECIFICATIONS AND PROFILES



Conqueror NZ Ltd has a policy of continuous product improvement; we reserve the right to change design or specifications without prior notice.



CONQUEROR

Conqueror NZ Ltd is New Zealand's only manufacturer of PIR foam core panel products on a continuous line.

From our state-of-the art 7500m² manufacturing plant in Christchurch we can manufacture a diverse range of panel products from a single production line, making it one of the most adaptable plants of its type anywhere in the world. This facility also has the unique ability to manufacture panels in lengths of up to 24m, enabling significantly more flexibility in building design.

Quality and Durability

Conqueror panels are manufactured and tested to BS EN 14509 standards from the highest quality materials, using state of the art production equipment to rigorous quality control standards, ensuring long term reliability and service life.

Warranty

In business, your reputation is everything and minimising risk makes sound business sense. Conqueror's range for thermal insulated cladding will give you the peace of mind you've chosen a quality material that conforms to relevant Australian and New Zealand standards and backed by a warranty you can count on.

Packaging and Delivery

Protective film is applied to the steel facing during the production process. Conqueror PIR panels are stacked flat. The number of panels in each pack depends on panel thickness.

Handling guidelines are available from Conqueror NZ Ltd Technical Services.

Lead times are typically 2-3 weeks for stocked coatings and colours. Non stocked coatings/colours require extra lead time.

WHY PIR CORE?

ECONOMIC ADVANTAGES

Accelerated construction reduces site time and energy efficiency of PIR core, which can reduce operating costs by up to 50%.

INSULATION PROPERTIES

Due to the low heat conductivity of its fully formed closed cell structure, PIR is thermally efficient. This superb thermal performance allows buildings to achieve premium levels of energy efficiency, with some of the thinnest available solutions.

DURABILITY

As PIR does not sag or absorb moisture you can be confident of consistent performance which will last the full lifetime of the building.

MOISTURE RESISTANCE

Water absorption through exposure to moisture or in exceptional circumstances through floods, is a significant factor with any modern insulation product. Due to having a closed cell structure, PIR is a hydrophobic product, meaning it does not absorb water. This allows the thermal performance and integrity of the product to be retained regardless of water exposure.

STEEL FACING

COLOURS

Our standard colour is Titania. Other colours are available on request. However, please note that the colour chart shown here is indicative only and is as close as the printing process allows. If in doubt before ordering, please refer to your Conqueror NZ Ltd agent's colour chart.

COATING

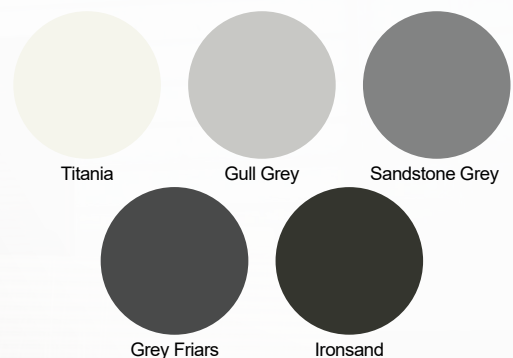
The Zinc/Aluminium alloy coated steel has been formulated to give a significantly longer service life than a galvanized coating. This is of particular value in New Zealand where the prevailing winds carry corrosive salt-laden air many kilometers inland.

FIRE RESISTANCE

PIR will self-extinguish as soon as the cause of fire is removed. PIR foam is a thermosetting material. It does not melt, flow or drip when exposed to fire and it will form a strong char that helps protect the foam core and prevent flame spread within the panels.

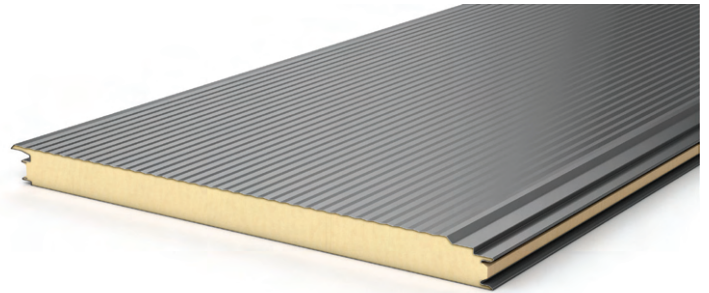
OCCUPANT ADVANTAGES

- Passive temperature control for a more stable environment.
- Superior water, condensation and moisture proofing.
- Low allergenic qualities.
- Superior seismic performance.
- High fire rating for maximum inhabitant safety.
- Paint and steel finish option.
- Lifetime performance, with no deterioration of airtightness or insulation values.



PRODUCT INFORMATION

Conqueror NZ Ltd architectural wall panels are designed to be used for an external facade element and can be installed horizontally or vertically. They are suitable across a broad range of applications and environments adding strength, thermal and fire performance, as well as texture and depth to the building envelope.



PANEL PERFORMANCE

Thickness (mm)	50	75	100
R Value at 15°C (mK/W)	2.4	3.7	4.9
R Value at 23°C (mK/W)	2.3	3.5	4.7
Weight (kg/m ²)	10.8	11.8	12.8
Unsupported Span (m)	3.0	4.3	5.0

Weight for 0.5/0.5 facings

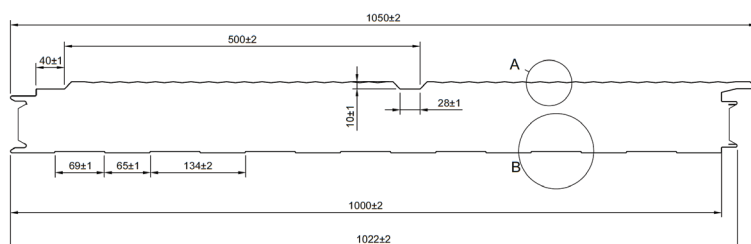
ACOUSTIC PROPERTIES

Freq	125	250	500	1000	2000	4000	STC	RW
Hz	17.2	18.2	19.1	24.8	37.3	39.5	21	24

Tested to ISO 10140-2 on 100mm triple rib wall panel

FIRE PERFORMANCE

AS1530.3 - Group 1-S	
Ignitability Index	0
Spread of Flame Index	0
Heat Evolved Index	0
Smoke Index	1
Fire Resistance Test: AS1530.4	--/120/30
Foam Plastic Core	
Core meets the requirements of AS1366.2	
External Radiation(ISO 5660-1:2015)	
Total Heat THRR	Peak Heat PHRR
34.7 MJ/m ²	83.5 kW/m ²



PRODUCT PROPERTIES

Core	Fire-retardant (PIR) foam
External facing	0.55mm thick Zinc/Aluminium G300S AZ150 coated steel to AS 1397
Internal Facing	0.55mm thick Zinc/Aluminium G300S AZ150 coated steel to AS 1397
Width	1000mm cover width
Length	As required, 2m - 24m
Thickness	50mm, 75mm, 100mm

Other steel thicknesses and coatings upon request.

PROFILE OPTIONS

Wave - Triple Rib



Wave - Single Rib



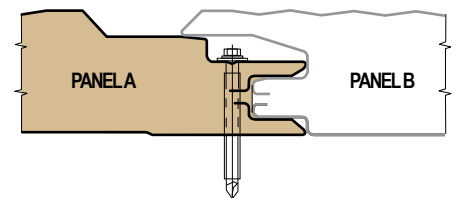
Wave



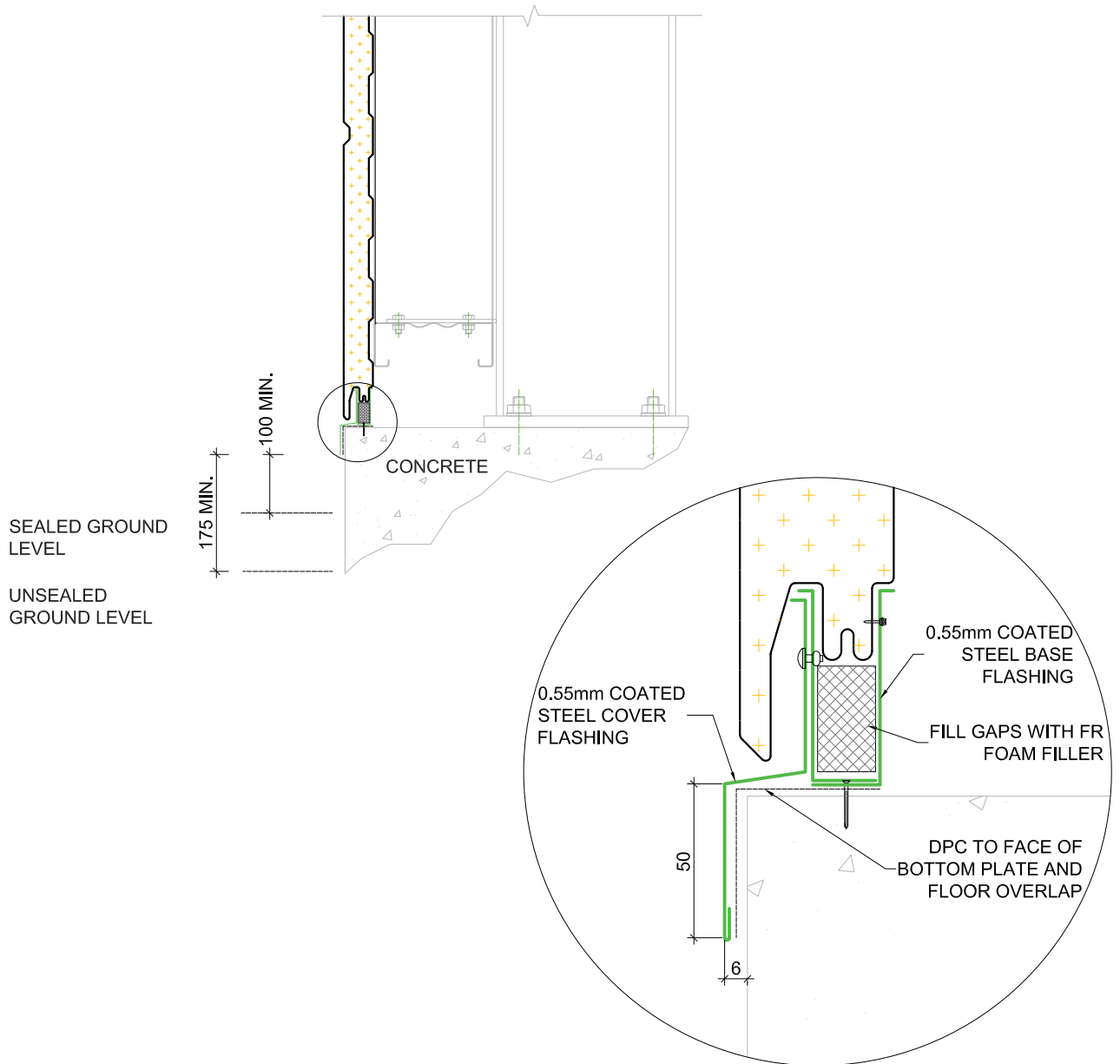
Flat - Single Rib



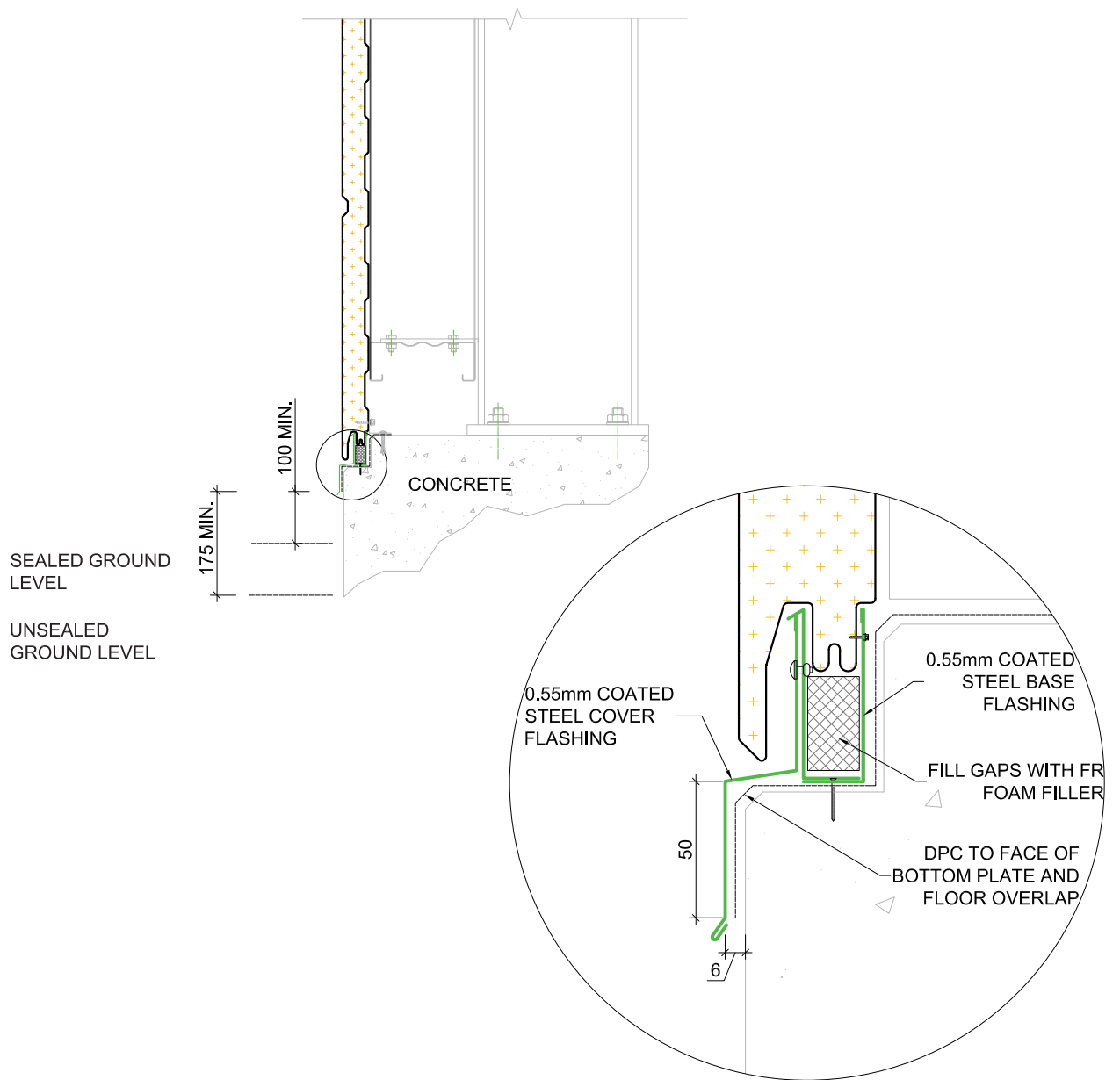
Flat - Triple Rib



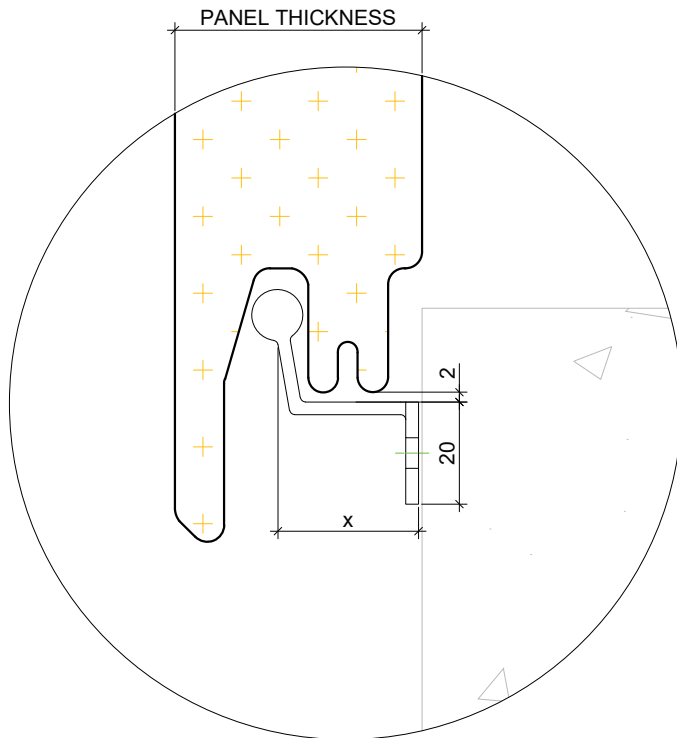
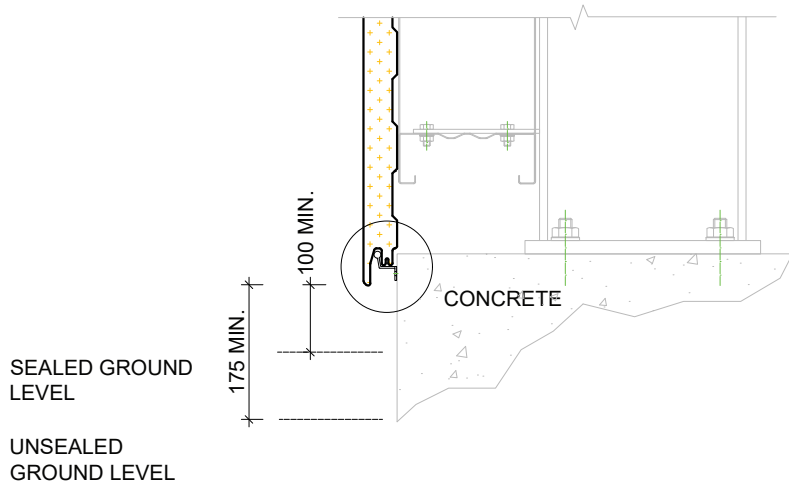
WD01 HORIZONTAL WALL BASE ON SLAB



WD02 HORIZONTAL WALL BASE ON REBATED SLAB



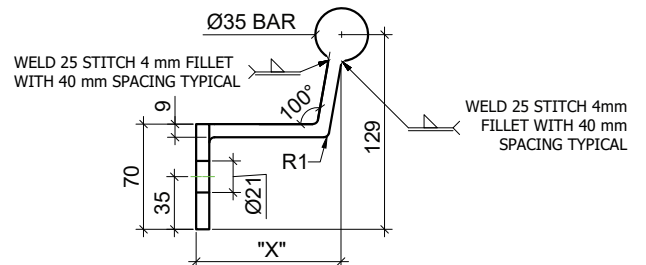
WD03 HORIZONTAL PANEL EXTERNAL MOUNT BASE BRACKET



BRACKET DETAIL TOP VIEW



BRACKET DETAIL FRONT VIEW

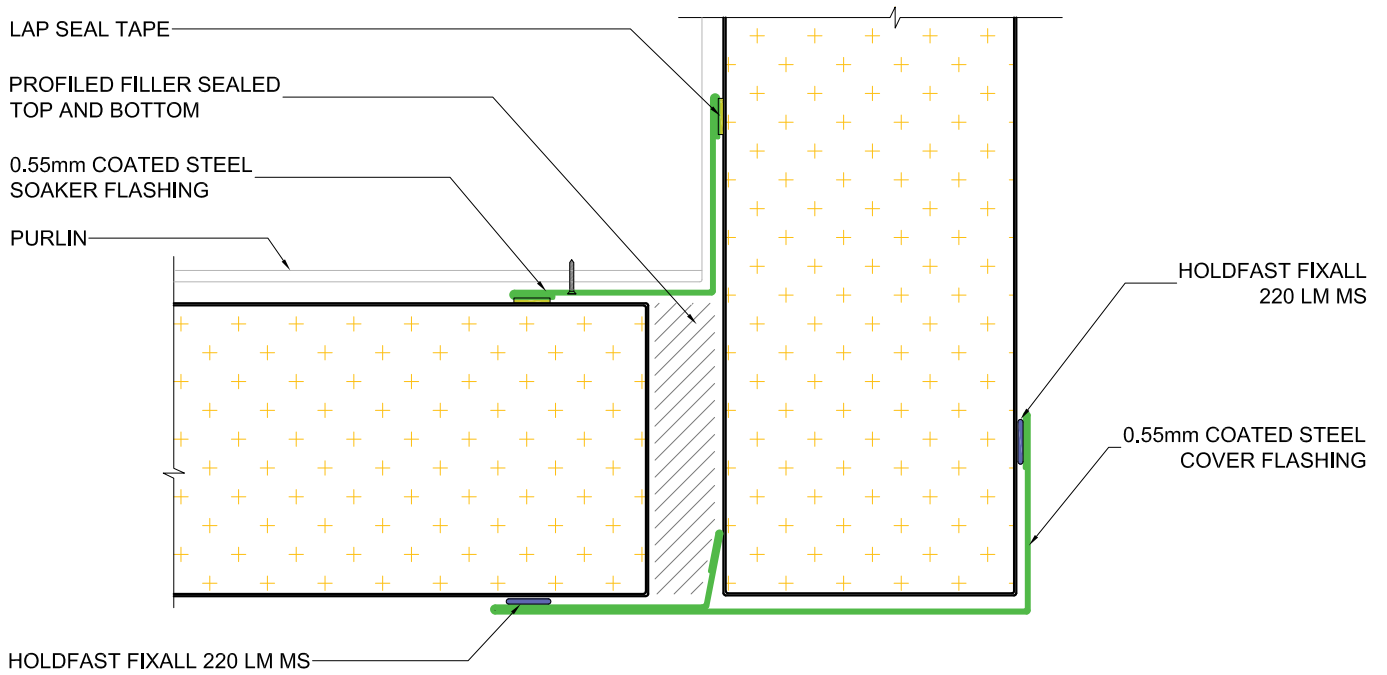


NOTE:

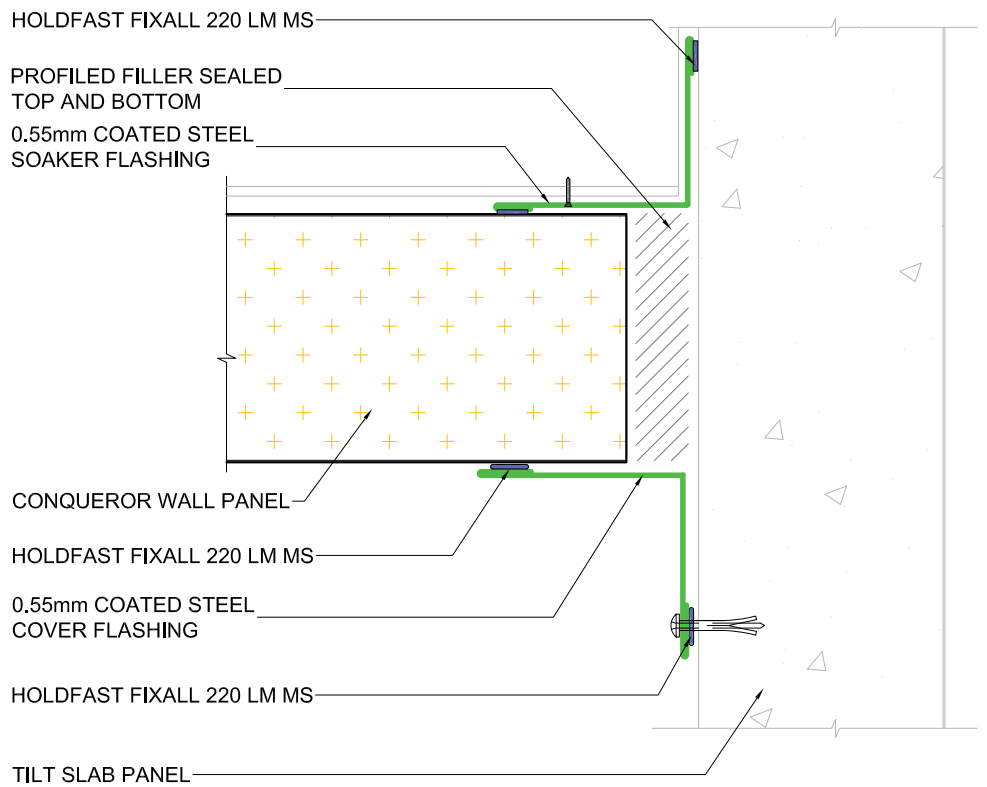
- PANEL BEARER FIXING CENTRES 1500 mm MAXIMUM
- MATERIAL: 2.5 mm THICK MILD STEEL
- FINISH: BNZ AND CLEAR, BS 1706 1990 Ff ZN 51A OR HOT DIP GALVANIZED

PANEL THICKNESS	DIMENSION "X"
50mm	28mm
75mm	52mm
100mm	79mm

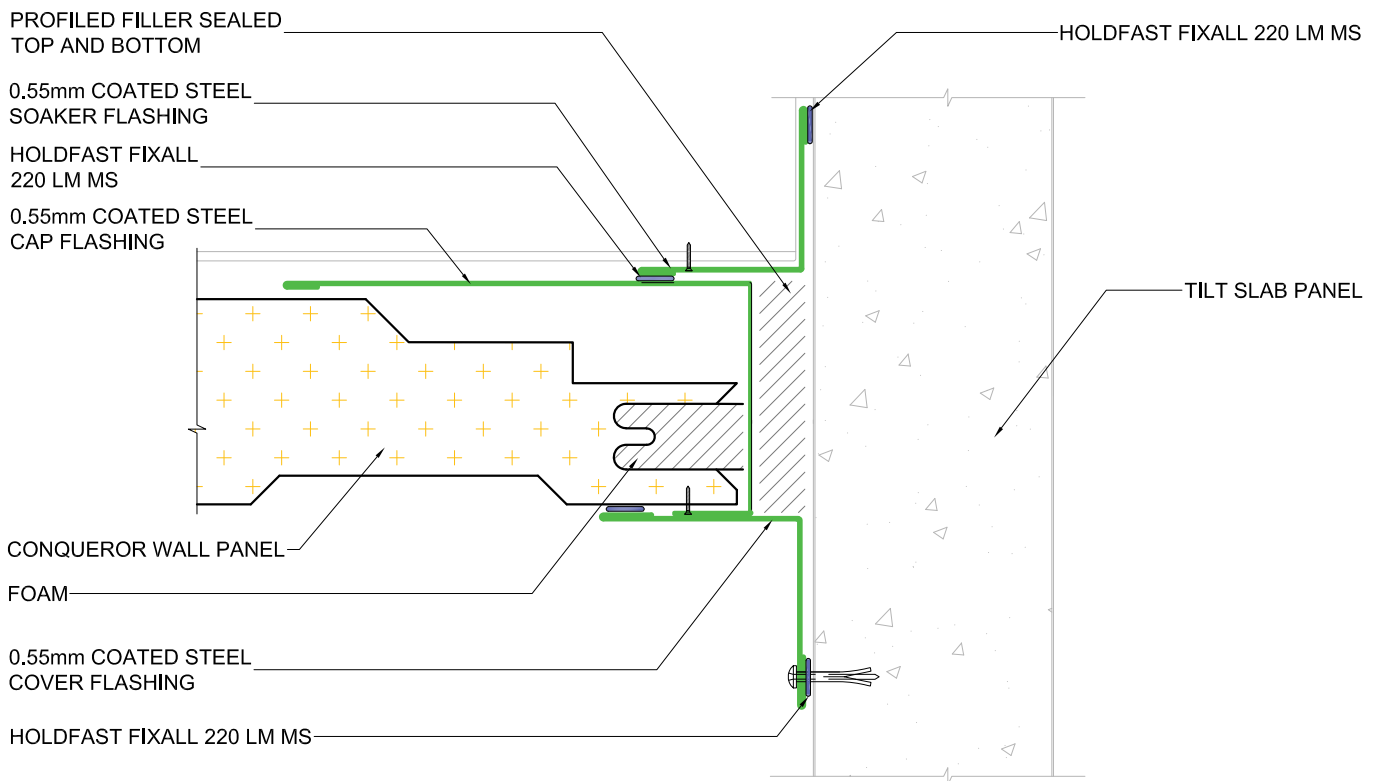
WD04 HORIZONTAL PANEL -
EXTERNAL CORNER DETAIL



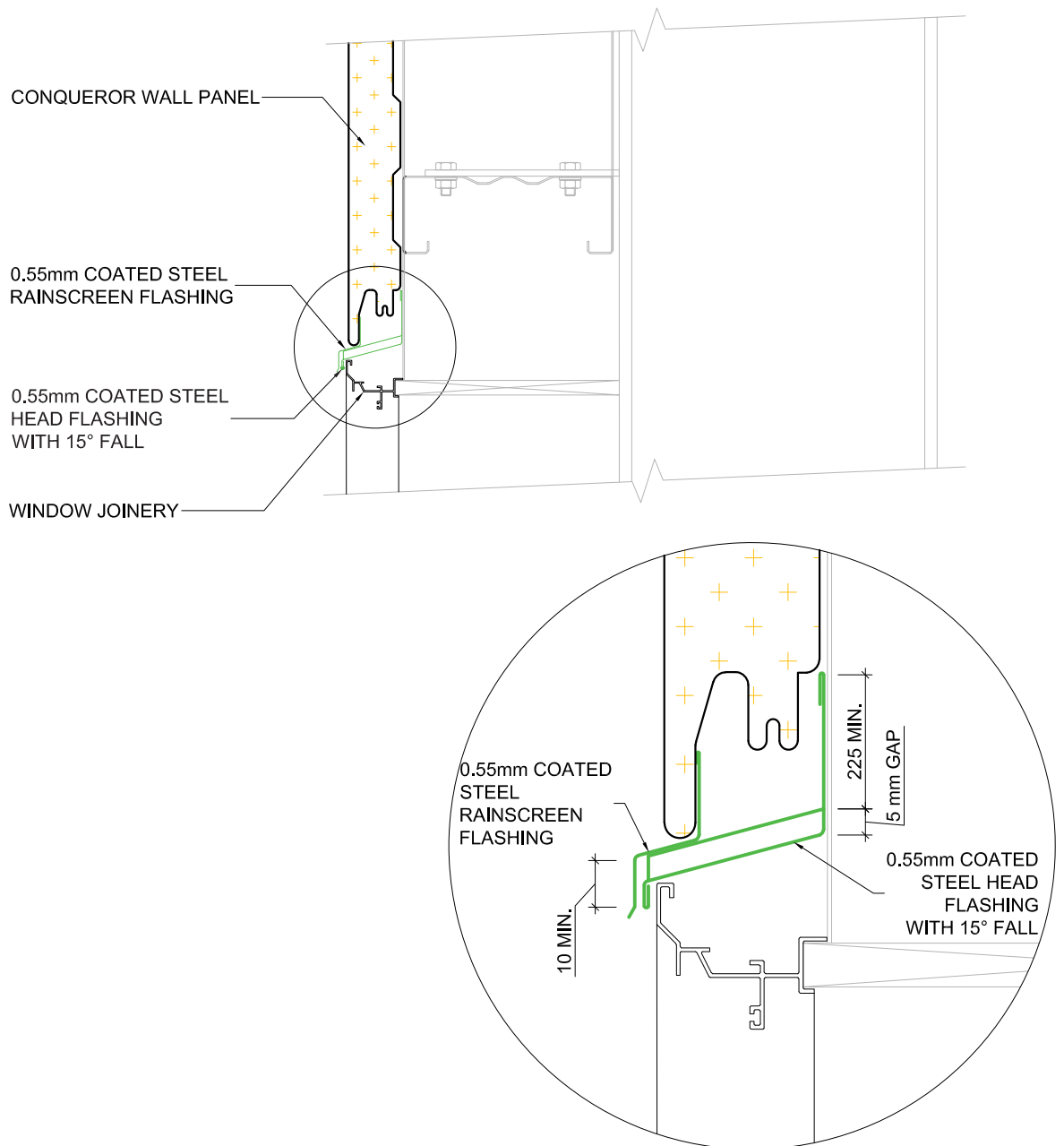
WD05 HORIZONTAL PANEL - TILT SLAB PANEL JUNCTION DETAIL



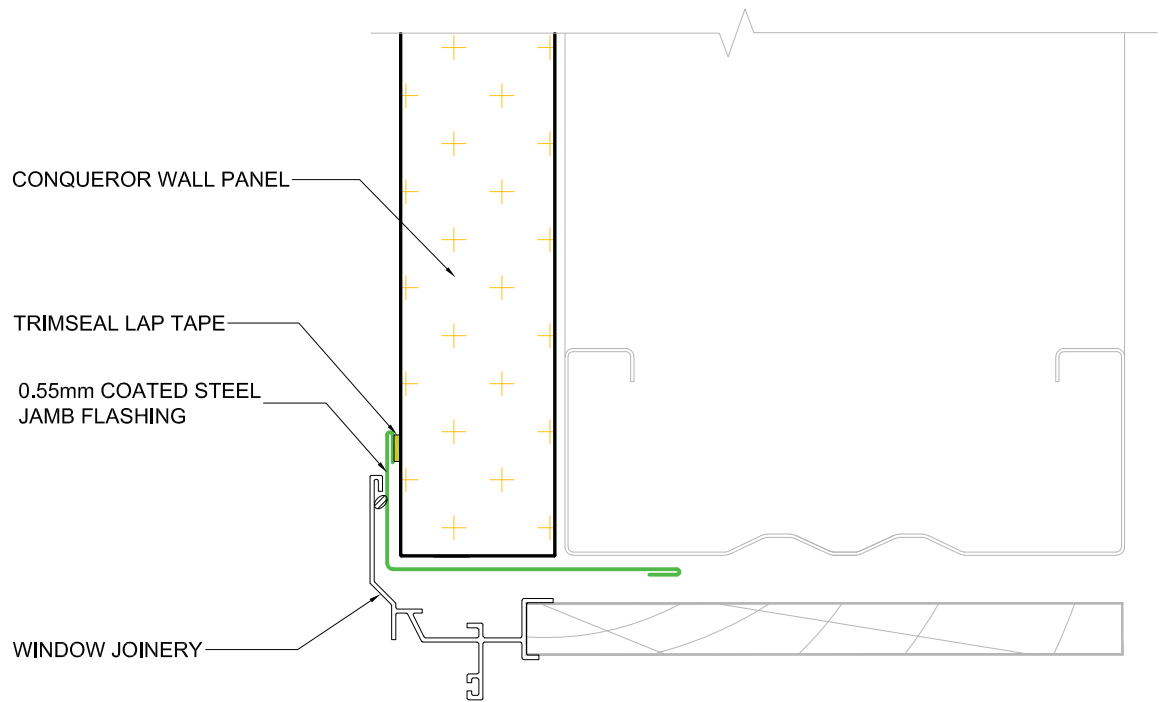
WD06 VERTICAL PANEL - TILT SLAB PANEL JUNCTION DETAIL



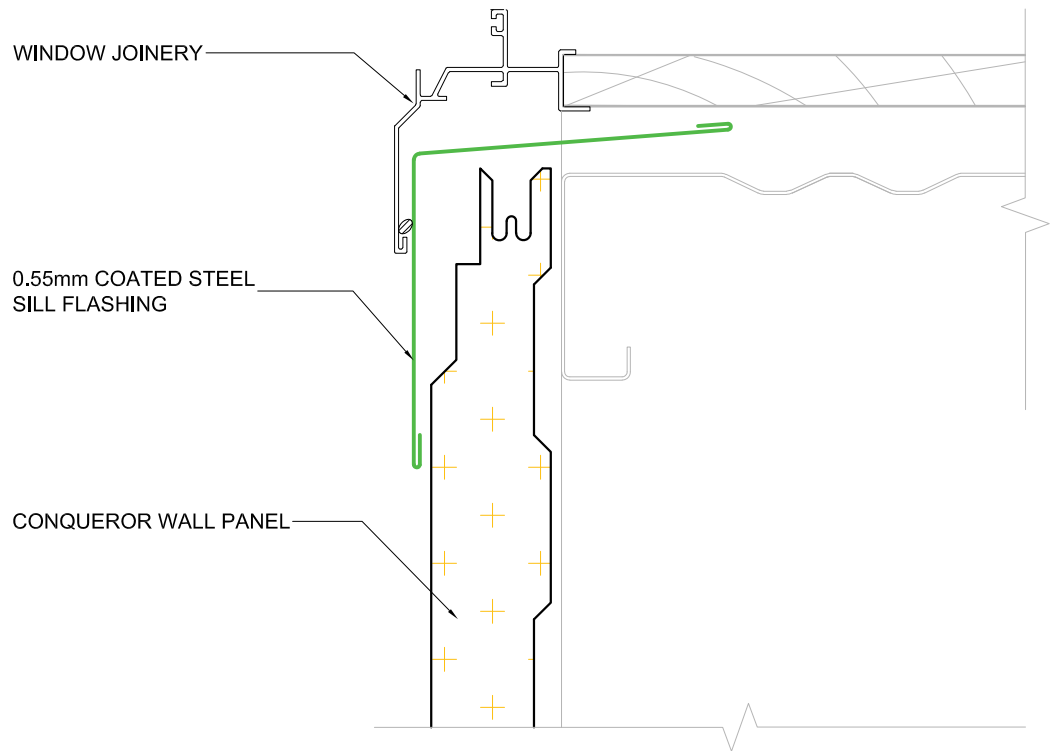
WD07 HORIZONTAL PANEL - RESIDENTIAL WINDOW HEAD DETAIL COLUMN



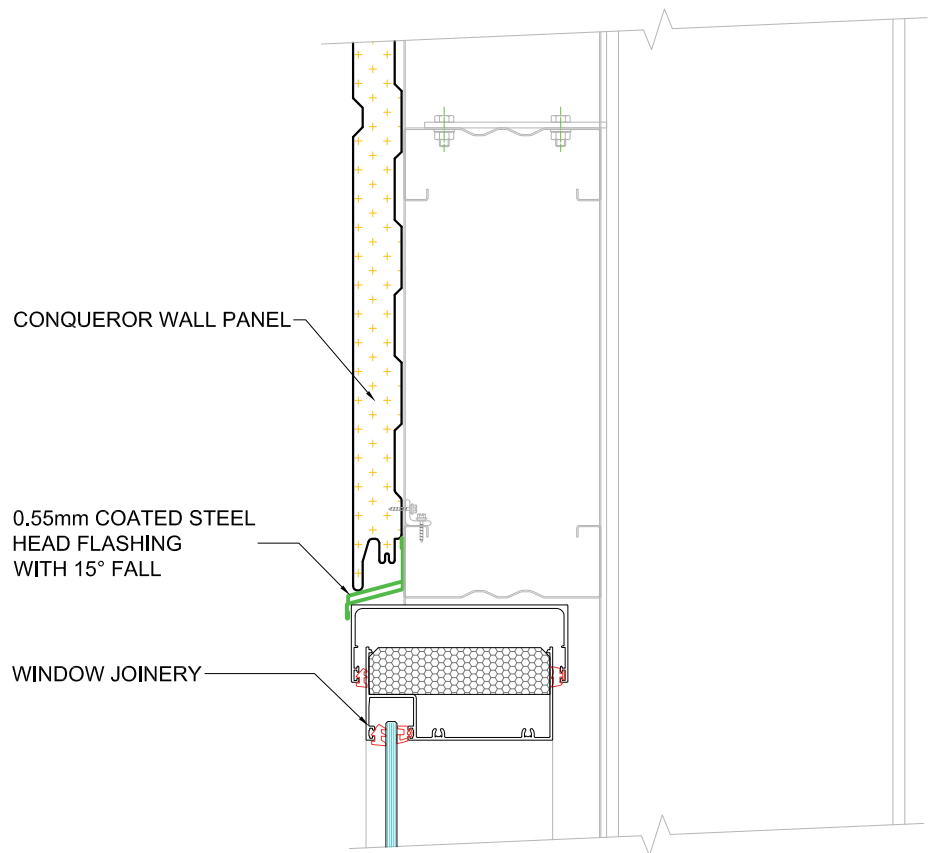
WD08 HORIZONTAL PANEL - RESIDENTIAL WINDOW JAMB DETAIL



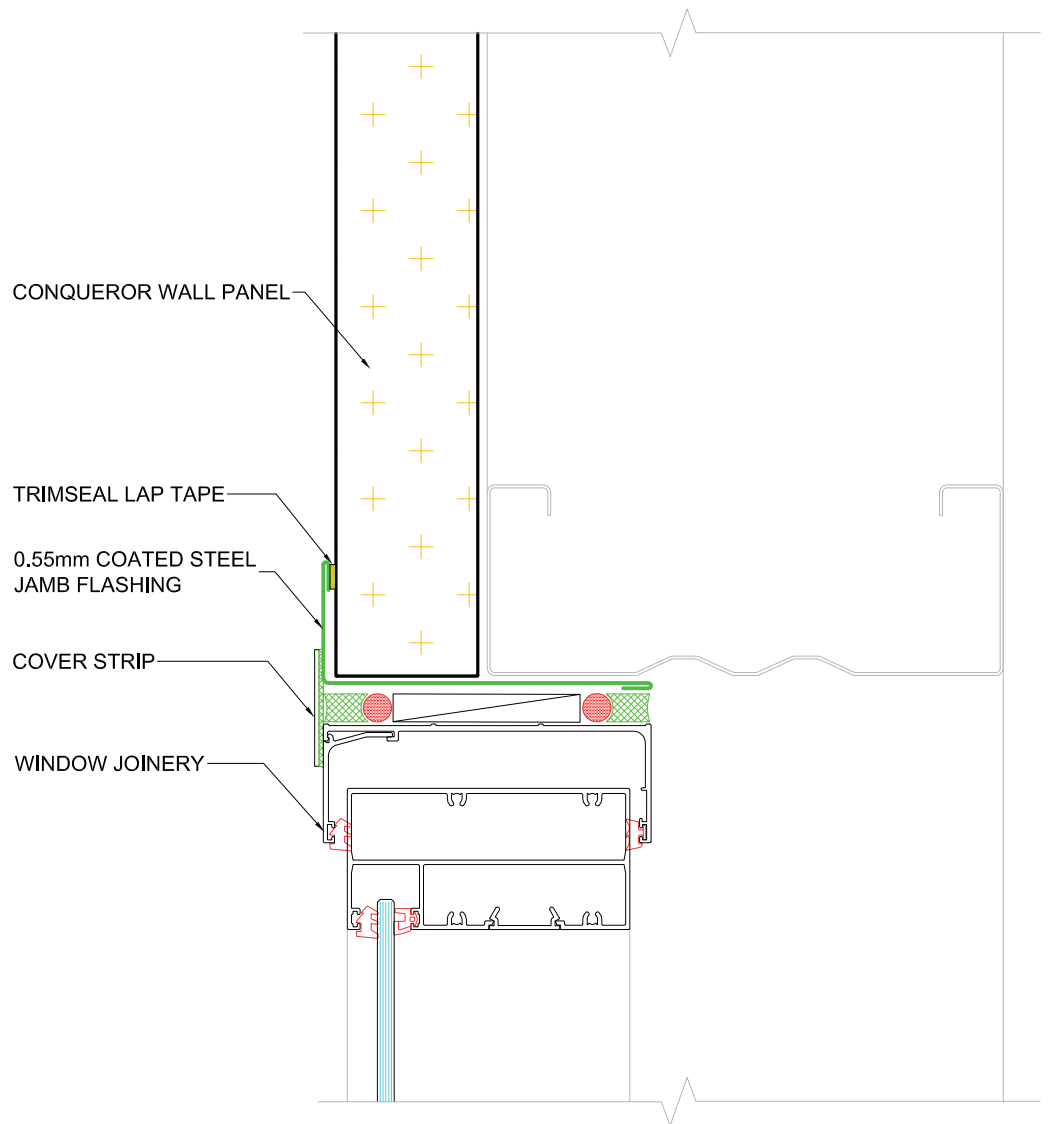
WD09 HORIZONTAL PANEL -
RESIDENTIAL WINDOW SILL DETAIL



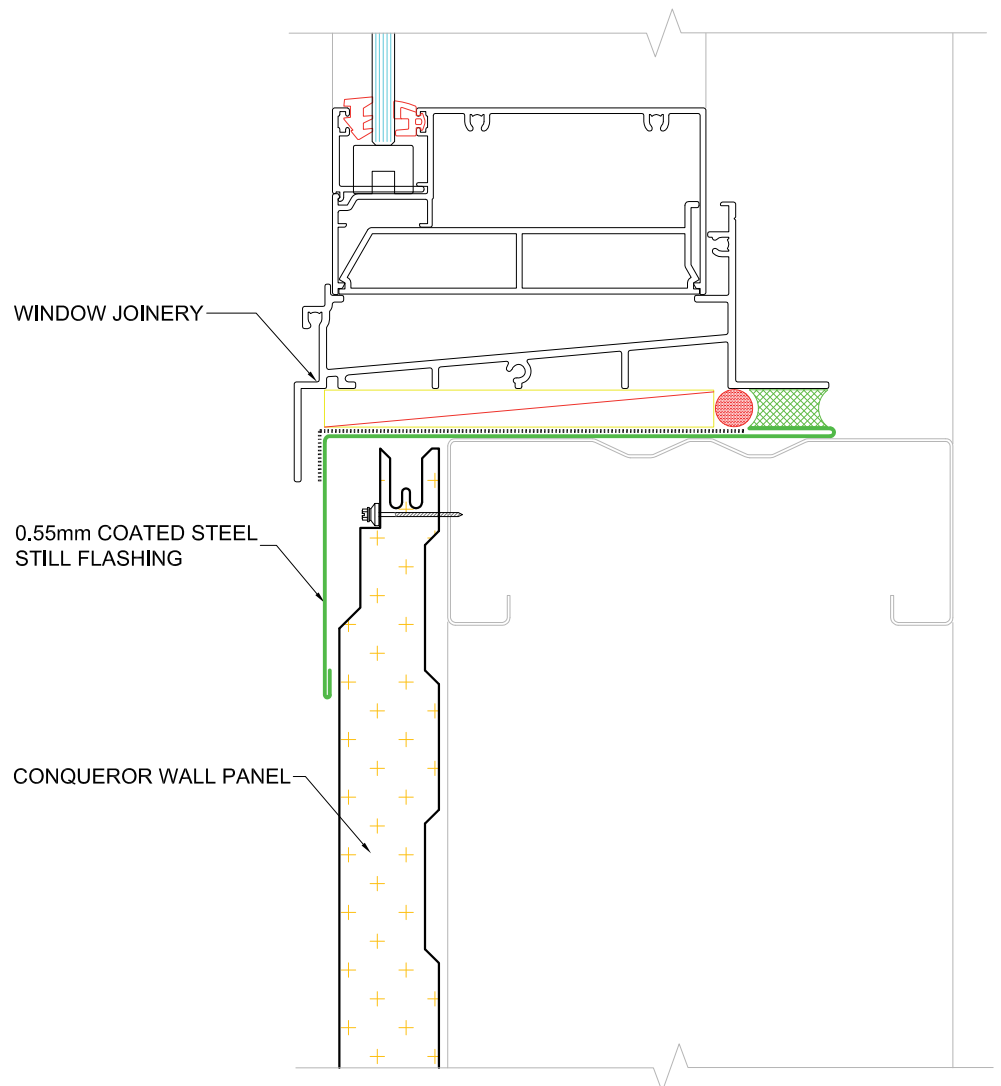
WD10 HORIZONTAL PANEL -
COMMERCIAL JOINERY HEAD DETAIL



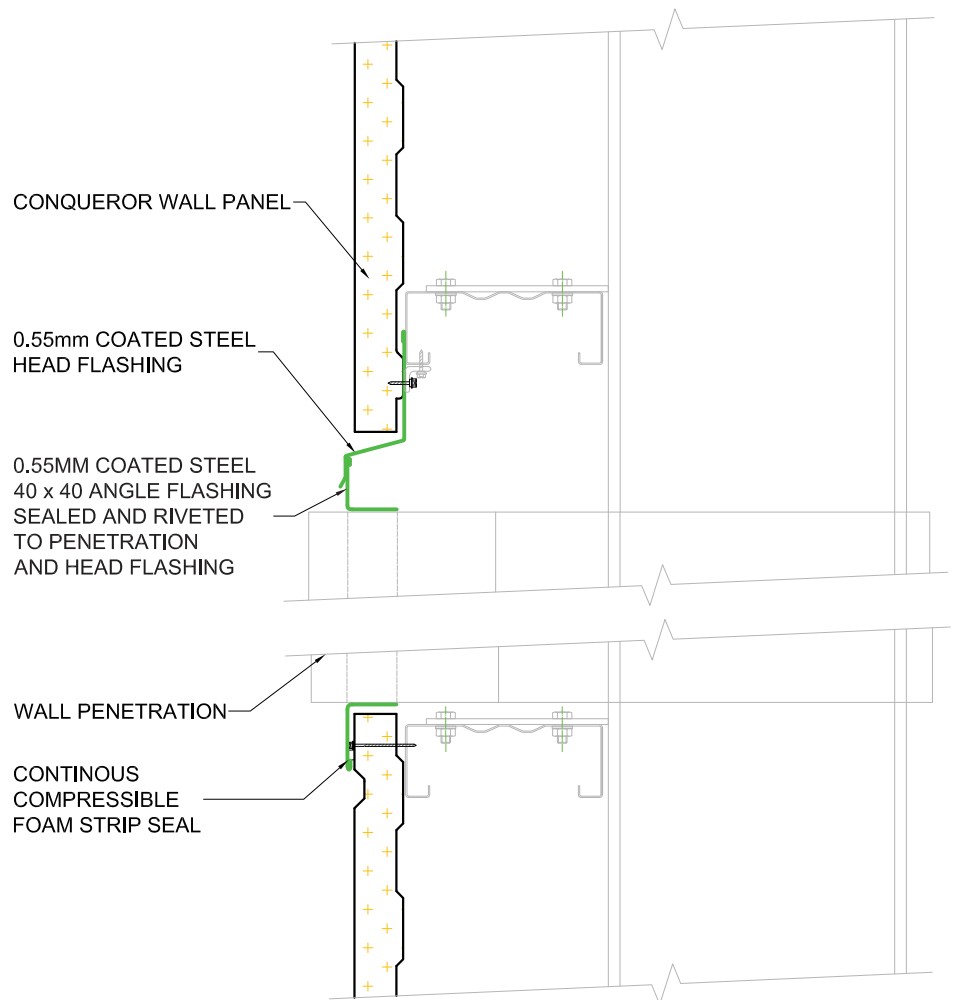
WD11 HORIZONTAL PANEL -
COMMERCIAL JOINERY JAMB DETAIL



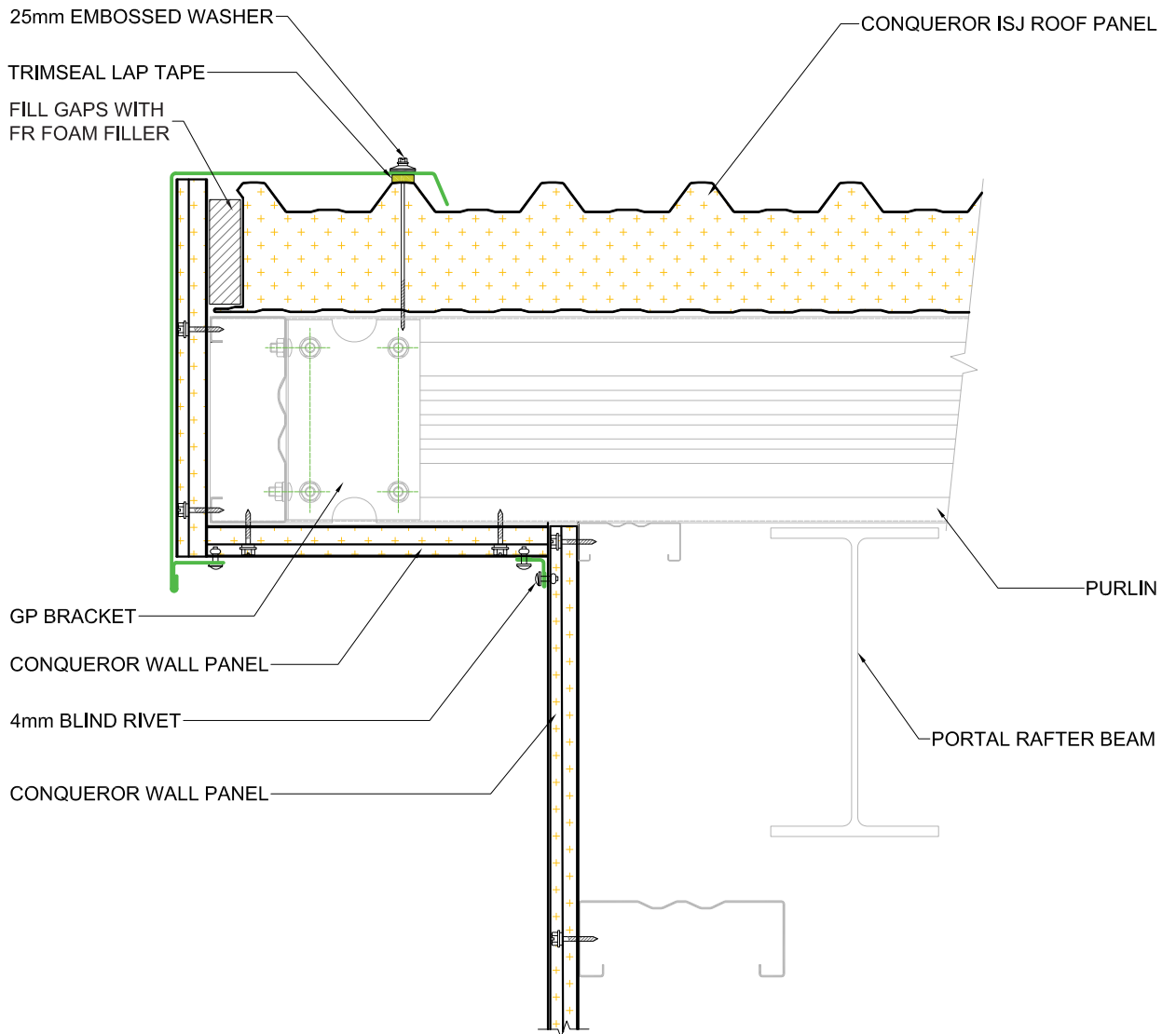
WD12 HORIZONTAL PANEL -
COMMERCIAL JOINERY SILL DETAIL



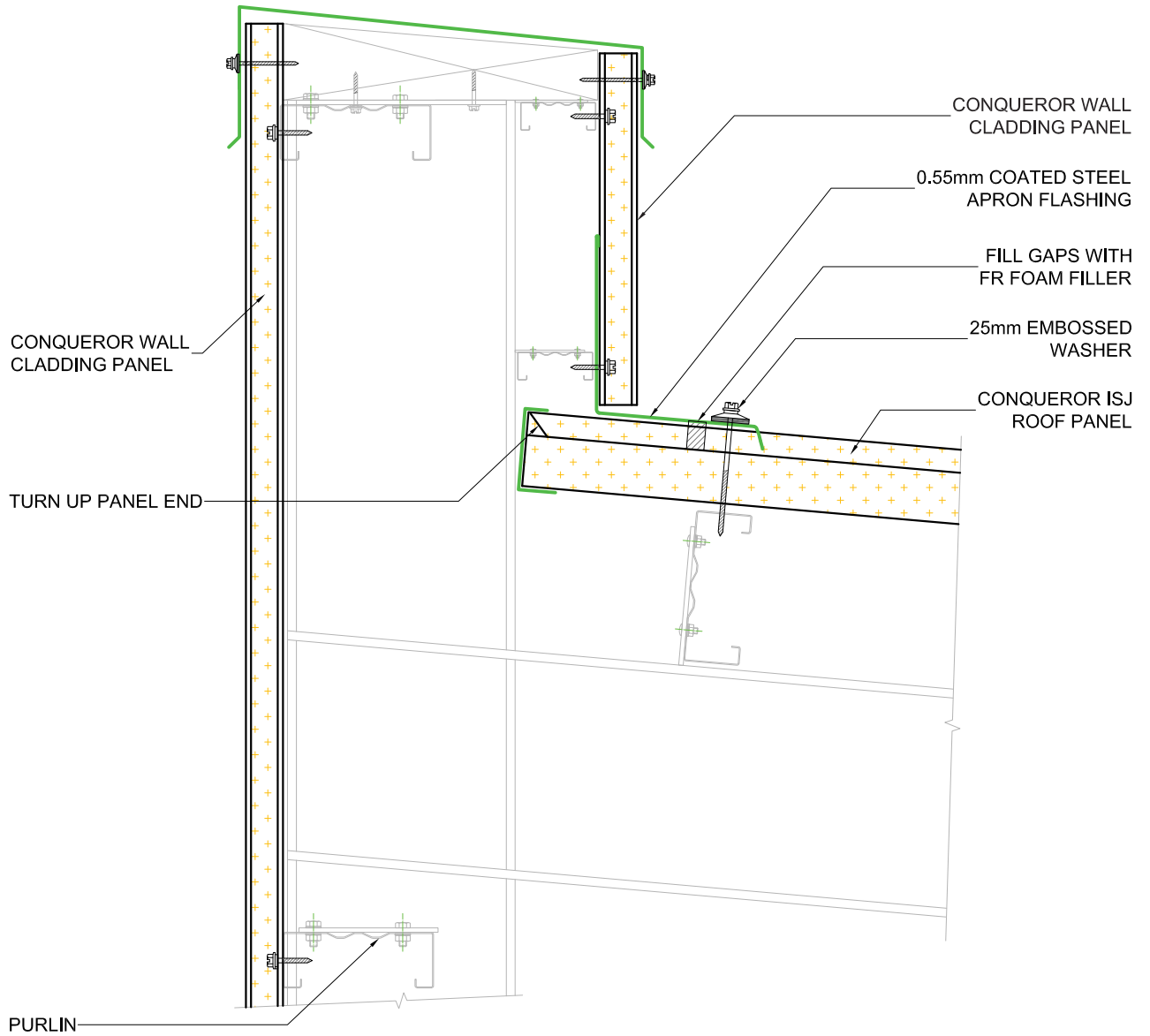
WD13 HORIZONTAL PANEL -
WALL PENETRATION DETAIL



WD14 EAVE DETAIL



WD15 PARAPET DETAIL



CONTACT



57 West Coast Road
Yaldhurst, Christchurch 7676



0800 799 923



info@cnzltd.co.nz



www.conquerornz.co.nz



www.facebook.com/conquerornz



www.linkedin.com/company/conqueror-nz

CONQUEROR