



Base Plate with Cover (optional)
Product Code: BP105 & CP110

Base plate for fixing post to floor

To fit 50.8mm tube 1.5mm wall

3 fixing holes

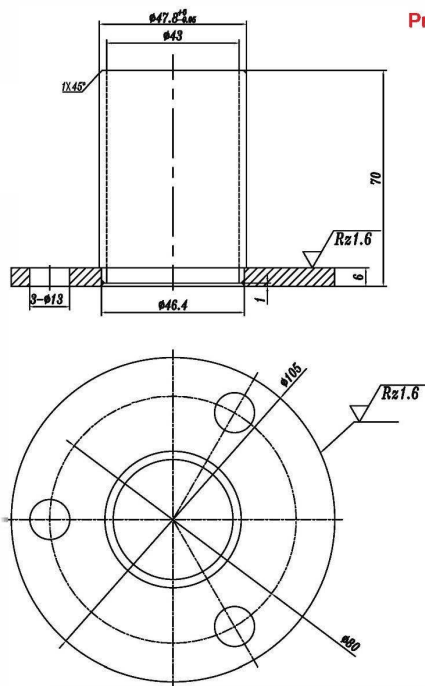
AISI304 and AISI316 stainless steel options

Corrosion resistant - manufactured from high quality stainless steel

Available in satin finish

Base Plate BP105 AISI304

Base Plate with post
105mm diameter
Fits 50.8mm tube
3 fixing holes

**Product Code: BP105**

Optional Cover Plate CP110
AISI 316

Product Code: CP110

To Fit Base Plate BP105
AISI316 Satin

