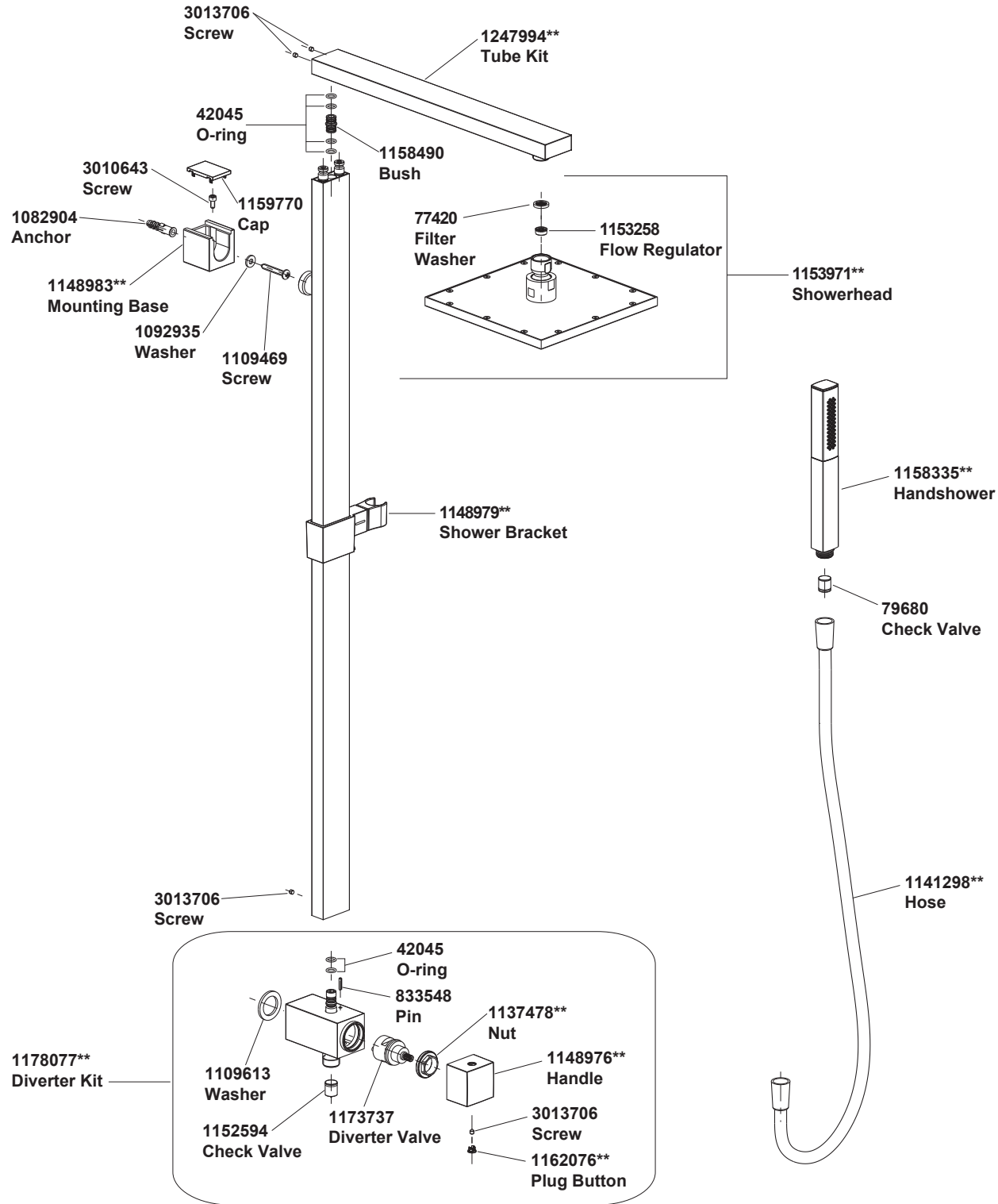


Shower Column: 6219A



**Color code must be specified when ordering

Shower Column: 6219A

BEFORE YOU BEGIN

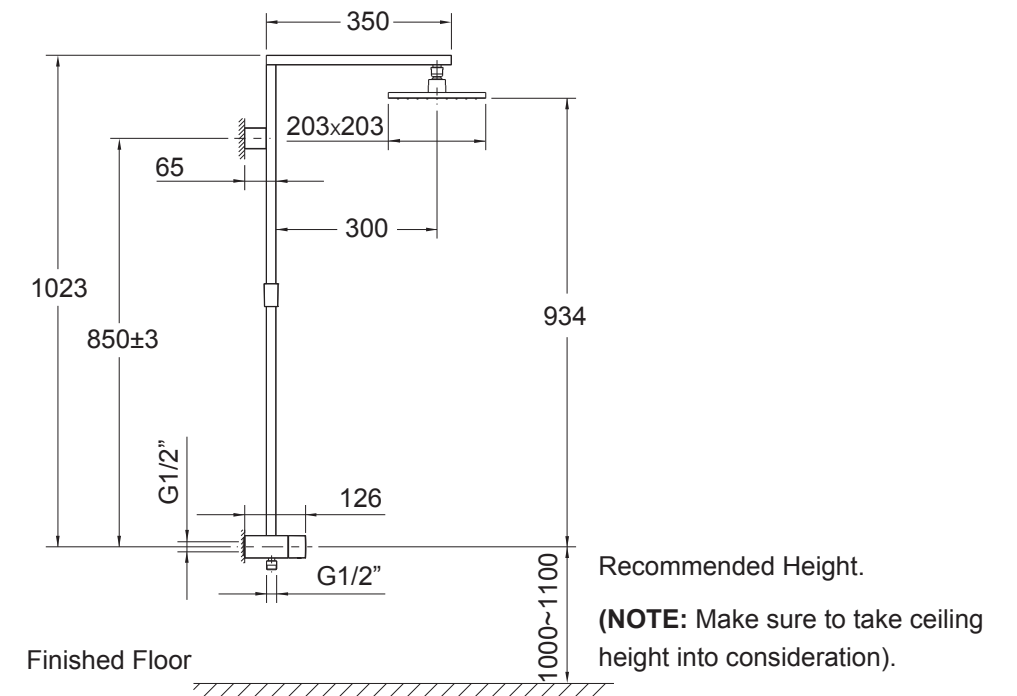
All information is based on the latest product information available at the time of publication. Kohler Co. reserves the right to make changes in product characteristics, packaging, or availability at any time without notice.

Please leave these instructions for the consumer. They contain important information.

NOTES:

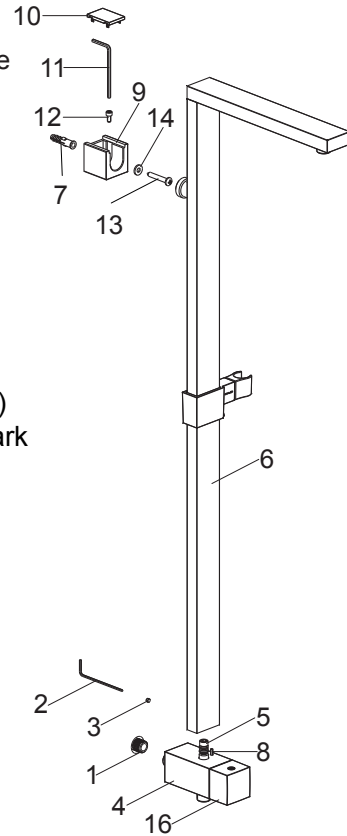
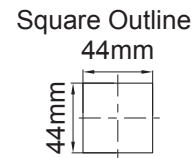
1. Flush the water supply pipes thoroughly to remove any debris.
2. An in line water filter must be used with this product.
3. Inspect the supply pipes for damage. Replace as necessary.
4. Observe local plumbing codes.
5. The recommended working pressure for the hand spray / shower head is 100KPa to 500KPa. If the pressure exceeds 500KPa a pressure reducer is required.
6. Maximum water and environmental temperature for the hand spray is 60°C. Note: If a heater is present, make sure to keep it away from the hand spray or shower head as otherwise the environmental temperature may exceed 60°C.
7. All installations should comply with the relevant requirements of AS/NZS 3500 and AS/NZS 6400.

ROUGH-IN DIMENSIONS



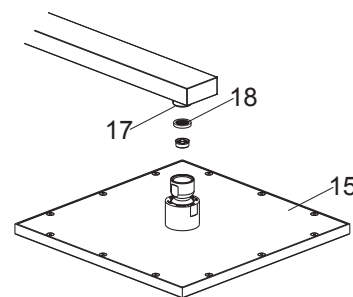
INSTALLATION - Slide bar

- 1.) This shower column is designed to be fitted to a G1/2" male supply fitting(1) located in a hole no bigger than 32mm beyond the finished wall 10~15mm.
- 2.) Loosen the screw(3) with the hex wrench(2) and remove the diverter kit(4). Apply tape or thread sealant to the diverter threads.
- 3.) Thread the diverter kit onto the G1/2" supply fitting until it's against the finished wall, adjust the diverter kit and make sure the connector(5) is facing upwards.
- 4.) To determine the top mounting location place the slide bar kit onto the pin(8) located in the diverter kit. Place the base(9) against the finished wall and mark the square footprint of the base with a pencil.
- 5.) Remove the cap(10). Unscrew the screw(12) with the hex wrench(11) (NOTE: Don't lose the screw.) and remove the base. Mark the center point of the square outline with a pencil.
- 6.) Drill the appropriate hole in the center point and press the anchor into the hole. Secure the base using the self-tapping screw(13) with the washer(14). Make sure the slot of the base faces upwards.
- 7.) Slide the slide bar kit onto the base and the diverter kit's pin. Tighten the screw(3) with the hex wrench(2). Install the screw(12) with the hex wrench(11) and tighten it to secure the slide bar kit. If needed, adjust the base vertically to install the screw. Install the cap.



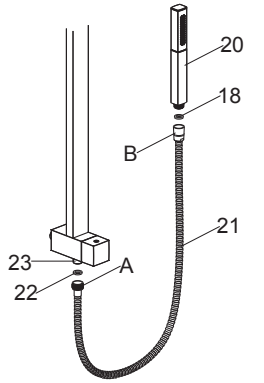
INSTALLATION - Shower head

- 1.) To remove any debris, turn the diverter handle(16) upwards to the side of the showerhead logo and run hot and cold water for about one minute.
- 2.) Assemble end A of the hose (21) with the filter washer (22) and thread to the G 1/2" outlet (23). Assemble end B of the hose with the filter washer (19) and thread to the spray head (20).



INSTALLATION - Handspray and hose

- 1.) To remove any debris, turn the diverter handle(16) upwards to the side of the handspray and run hot and cold water for one minute.
- 2.) Connect end A of the hose(21) with the filter washer(22) to the connector (23). Connect end B of the hose with the filter washer(24) to the handspray.

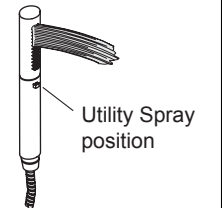
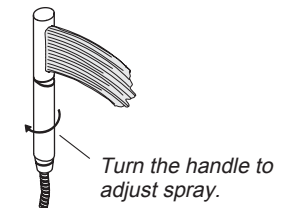
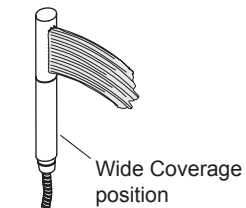


INSTALLATION CHECK

- 1.) Ensure that all coupling nuts are fastened securely.
- 2.) Ensure that the handle is in the off position.
- 3.) Open the drain and turn on the main water supply and check for leaks. Repair as needed.

OPERATION - Hand shower

- 1.) Your handshower has two spray options, wide-coverage and utility spray. To change spray type turn the handle until the spray face aligns with the nub.



CLEANING INSTRUCTIONS

All Finishes: Clean the finish with mild soap and warm water. Wipe entire surface completely dry with a clean soft cloth. Many cleaners may contain such chemicals as ammonia, chlorine, toilet chemicals etc. which could adversely affect the finish and are not recommended for cleaning.

Do not use abrasive cleaners or solvents on Kohler fittings.