

Product

- Reach compact back to wall toilet suite

NZ Code

686184

Kohler Code

5233A-0



Included Components

- Reach compact toilet pan
- Reach compact toilet cistern 4.5/3L
- Reach compact quiet close toilet seat with metal hinge
- Vario pan connector
- Fill valve
- Floor fixing bolts, anchors and chrome covers



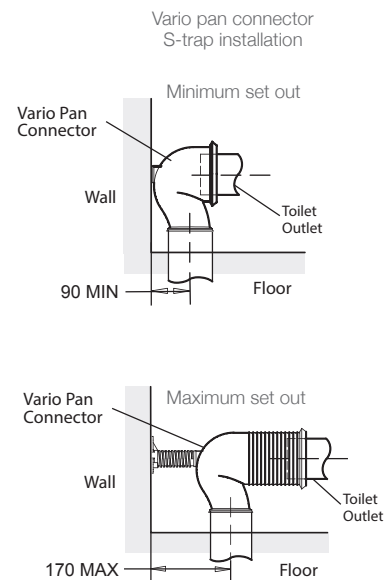
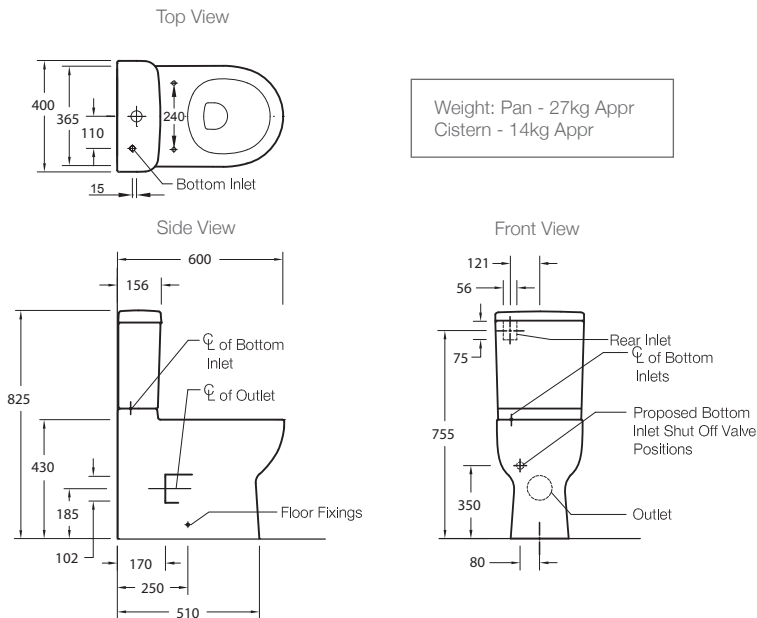
Features

- Dual flush (4.5/3L)
- Rear left inlet (standard)
- Bottom left inlet (optional: additional hose required)
- P-trap set out: 185mm
- S-trap set out (with vario pan connector): 90mm - 170mm
- Concealed trapway
- Box rim
- Vitreous china

Related Products

- Reach basins (page 1.0.1)
- Reach toilets (page 2.0.1)

Technical Details



Installation Notes:

- Water supply pressure range: 20 psi (137 kPa) - 80 psi (551 kPa).
- Can be installed as a P-trap using a straight connector (not supplied) or as an S-trap using the vario connector (supplied).
- The installation of a remotely located inlet shut-off valve (not supplied) is required.