

SENTRY PERMANENT GUARDRAIL SYSTEM

The Sentry Permanent Guardrail System provides the highest level of safety for maintenance personnel when working at heights and other fall risk areas. Sentry ensures controlled access within these areas protected by the permanent guardrail system. Sentry componentry is fully adjustable and adaptable to suit any location, complemented by a complete range of prefabricated fixtures and fittings.

- > Prefabricated, modular guardrail system ensures rapid installation
- > Lightweight, high strength construction
- > Neat appearance, can be powdercoated to suit surrounds
- > Adaptable to suit any application
- > No need for ongoing assessment and recertification
- > Highest level of fall protection safety

**"NEVER HAS SAFETY
IN THE WORKPLACE
HAD A HIGHER
PRIORITY"**





Handrail



Kneerail



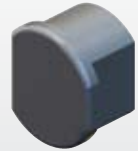
Post kit



Adjustable corner



Handrail end cap



Kneerail end cap

THE SAYFA WAY

SAYFA Systems is an Australian owned company which leads the market in design, production, supply and installation of quality and standards compliant Height Safety, Access and Fall Protection systems and solutions.

Our extensive range of products and services are well suited to industrial, commercial and domestic applications, providing a high level of safety and confidence for all personnel involved in the workplace. Having gained first hand experience and understanding of product requirements, being actively involved in the day to day industry activities, we are able to incorporate that vital 'know how' into the design and development of innovative, easy to install and user friendly systems.

Sayfa is committed to excellent customer support at all levels - **client, installer and user.**

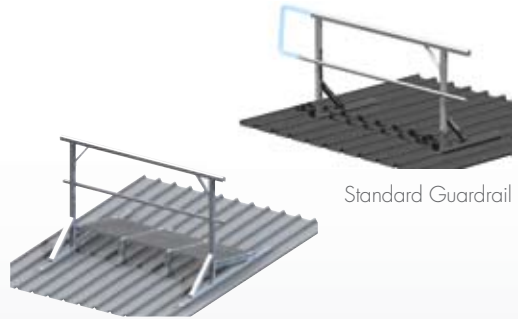
FEATURES & BENEFITS

The Sentry Guardrail System ensures controlled access within specific areas protected by the permanent guardrail system:

- > Prefabricated modular system – ensures simple, rapid installation.
- > Fully adjustable/adaptable fixtures & fittings – no on site welding required
- > Suits varied mounting applications
- > Minimal componentry – cost effective, reduced on site labour
- > High strength aluminium construction – lightweight and user friendly
- > Unobtrusive appearance – with option for powdercoating to blend in with surroundings

ACCESS THE SAYFA® WAY

INNOVATIVE, MODULAR ROOF ACCESS AND FALL PROTECTION SYSTEMS



Standard Guardrail

Levelled Walkway with
Guardrail one side



Walkway System with
Guardrail two sides

APPLICATIONS

The Sentry Guardrail System is ideally suited to areas requiring frequent access by maintenance personnel.

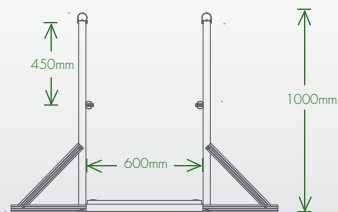
The System provides:

- > Fall protection to plant and machinery requiring periodic access
- > Safe access to gutters and other unprotected fall edges
- > A positive barrier system - ideal for fire escape and general roof walkway systems
- > Can be installed in conjunction with the On-Trak Walkway system
- > Easy retrofitting to existing stairways, platform systems, metal roof deck, concrete and steel structure

INSTALLATION

The Sentry Guardrail System is designed for rapid installation making use of simple modular componentry. Standard componentry used in the system includes:

- > Handrail section
- > Kneerail section
- > Post assembly
- > Universal elbows
- > Accessories - end caps, closure bends, swing gates, etc.



CALL \ 1300 301 755

SENTRY SPECIFICATION GUIDE

Supply and install the proprietary Sentry Guardrail System as per manufacturer, Sayfa Systems, recommendations. Sentry Guardrail to incorporate high strength profiled aluminium with fully modular and adjustable system componentry to suit attachment to metal roof deck, steel structure and concrete surfaces.
(Refer instruction manual.)

PRODUCT & SPECIFICATION CODE

Sentry Guardrail System (GW300)

MATERIAL

Post Assemblies, Hand & Kneerails – Extruded high grade structural (6106/T6) aluminium with options for powdercoating
Universal Elbows & End Caps – Die cast aluminium

DIMENSIONS

Handrail Component – 50mm diameter section mounted 1000mm to 1100mm above floor surface
Kneerail Component – 40mm diameter section mounted 450mm below handrail
Post Component – 60mm x 40mm RHS section, post length 950mm to 1100mm above floor surface
Post Spacing – Max 2.0m intervals

WEIGHT

2kg / m (approximate)

FIXINGS

Metal fixing – M12 bolt set
Concrete fixing (min 25 MPA) – M12 / 85mm mechanical concrete anchor
Metal roof deck fixing (min 0.42 BMT) – 5mm construction grade Bulbrite rivets
Handrail to post fixing – 12-14 / 20mm Tek screw
Kneerail to post fixing – 12-14 / 50mm Tek screw
(Refer instruction manual.)

WORKING LOAD LIMIT

1200N applied horizontally mid span between posts of 2.0m spacing.

COMPLIANCE

Sentry Guardrail is designed and manufactured generally in accordance with requirements of Australian Standards AS1657:1992 / AS/NZS1892:1996 and relevant statutory OHS Codes of Practice/Guidelines.

TESTING

Testing and performance based on requirements of Australian Standard AS1657:1992.

> Static load tested – 1.2kN applied horizontally on handrail component mid span between posts at 2.0m spacing

PRODUCT WARRANTY

3 years from date of purchase subject to correct installation, use and maintenance in accordance with manufacturer's specifications and recommendations.

INSPECTION AND MAINTENANCE

Visual inspection for any damage or loose fixings must be done periodically and prior to use. No certified maintenance is required. Basic wear and tear preventative maintenance is recommended, as per manufacturer's specifications and recommendations.
(Refer instruction manual.)

Designed and manufactured by Sayfa Systems

44 Kalman Drive,
Boronia VIC 3155
T \ 1300 301 755
F \ 1300 881 092
E \ info@sayfa.com.au
W \ www.sayfa.com.au



SENTRY® PERMANENT GUARDRAIL SYSTEM

The Sentry Permanent Guardrail System provides the highest level of safety for maintenance personnel when working at heights and other fall risk areas. Sentry ensures controlled access within these areas protected by the permanent guardrail system. Sentry Guardrail is fully adjustable and adaptable to suit any location, complemented by a complete range of prefabricated fixtures and fittings.

- > Prefabricated, modular guardrail system ensures rapid installation
- > Lightweight, high strength construction
- > Neat appearance, can be powdercoated to suit surrounds
- > Adaptable to suit any application
- > No need for ongoing assessment and recertification
- > Highest level of fall protection safety

SPECIFICATION CODE

Sentry Guardrail System (GW300)

Specification Summary

Supply and install the proprietary Sentry Guardrail System as per manufacturer, Sayfa Systems, recommendations. Sentry Guardrail to incorporate high strength profiled aluminium with fully modular and adjustable system componentry to suit attachment to metal roof deck, steel structure and concrete surfaces. (Refer instruction manual.)

System Applications

- > Ideally suited to areas requiring frequent access by maintenance personnel
- > The positive barrier system provides fall protection to plant and machinery requiring periodic access
- > Ensures safe access to gutters and other unprotected fall edges
- > Can be installed in conjunction with the On-Trak Walkway System – ideal for general roof walkway systems and fire escape
- > Easily retrofitted to existing stairways, platform systems, metal roof deck, concrete and steel structure

Technical Data

Material

Post Assemblies, Hand & Kneerails – profiled structural aluminium with option for powdercoating
 Universal Elbows & End Caps – Die cast aluminium

Dimensions

Handrail Component – 50mm diameter section mounted 1000mm to 1100mm above floor surface
 Kneerail Component – 40mm diameter section mounted 450mm below handrail
 Post Component – 60mm x 40mm RHS section, post length 950mm to 1100mm above floor surface
 Post Spacing – Max 2.0m intervals

Weight

2kg / m (approximate)

Fixings

Metal fixing – M12 bolt set
 Concrete fixing (min 25 MPA) –
 M12 / 85mm mechanical concrete anchor
 Metal roof deck fixing (min 0.42 BMT) –
 5mm construction grade Bulbrite rivets
 Handrail to post fixing – 12-14 / 20mm Tek screw
 Kneerail to post fixing – 12-14 / 50mm Tek screw
 (Refer instruction manual.)

Working Load Limit

1.2kN applied horizontally mid span between posts at 2.0m spacing.

- > Support structure integrity, suitability and fixing method to be assessed and determined by a competent person prior to installation

Compliance

Sentry Guardrail is designed and manufactured to comply with Australian Standard AS1657:1992 and relevant statutory OHS Codes of Practice/Guidelines.

Testing

Testing and performance based on requirements of Australian Standard AS1657:1992.

- > Static load tested – 1.2kN applied horizontally on handrail component mid span between posts at 2.0m spacing

Product Warranty

3 years from date of purchase subject to correct installation, use and maintenance in accordance with manufacturer's specifications and recommendations (Refer instruction manual.)

Inspection and Maintenance

Visual inspection for any damage or loose fixings must be done periodically and prior to use. No certified maintenance is required. Basic wear and tear preventative maintenance is recommended, as per manufacturer's specifications and recommendations. (Refer instruction manual.)

Important Note

Failure to supply and/or install proprietary product in accordance with above standards and codes, specifications and instructions voids complete system certification and/or warranty.

Technical Support

Sayfa Systems

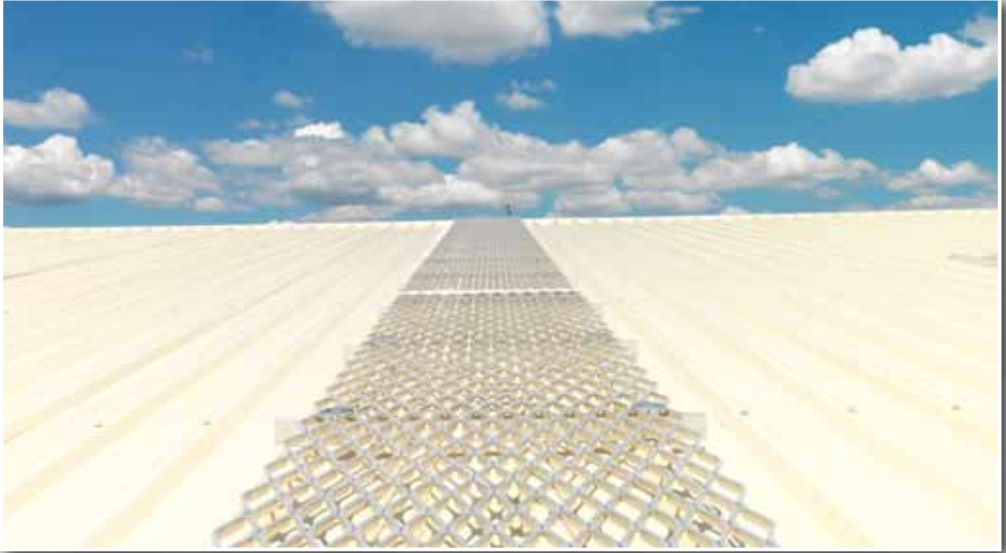
T \ 1300 301 755

F \ 1300 881 092

E \ technical@sayfa.com.au

W \ www.sayfa.com.au

*Designed and manufactured by Sayfa Systems
 20.04.2011*



PACE 600® ALUMINIUM WALKWAY SYSTEM

The Pace 600 Aluminium Walkway System is a lightweight, non corrosive walkway which provides safe designated access to roof mounted plant and equipment. Well suited to providing safe access over brittle and other fall risk surfaces, such as roof lights and asbestos roof decking. Extended lifespan of roof deck and walkway system.

- > Lightweight panels ensure simple and quick installation
- > Cost effective, non corrosive and maintenance free roof deck protection
- > Non slip surface formation improves workmen safety

SPECIFICATION CODE

- Pace 600 Walkway System (GW4) – with Guardrail one side
- Pace 600 Walkway System (GW5) – with Guardrail one side (levelled 7°+)
- Pace 600 Walkway System (GW6) – with Guardrail both sides
- Pace 600 Walkway System (GW7) – with Guardrail both sides (levelled 7°+)
- Pace 600 Walkway System (GW8) – Walkway only
- Pace 600 Walkway System (GW9) – Walkway only (levelled 7°+)

Specification Summary

Supply and install the proprietary Pace 600 Walkway System as per manufacturer, Sayfa Systems, recommendations. This lightweight alloy roof walkway system incorporates a non-slip surface formation suitable for use in exposed outdoor weather conditions. Pace 600 is to be fixed to spacer battens, allowing the walkway to stand clear of the roofdeck at all times while preventing any galvanic reaction between dissimilar metals. (Refer instruction manual.)

System Applications

- > Non-slip walkway system for safe access to roof mounted plant and equipment
- > Designated walkways ensure controlled access in hazard areas, limiting unauthorised access to 'No Go' zones
- > Safe and simplified roof access encourages regular maintenance of roof mounted plant and equipment without costly roof damage
- > Superior walkway decking can be used for lightweight domestic or existing plant platforms
- > Walkway can be utilised for skylight and roof light protection

Technical Data

Material

Walkway – mill finish, expanded aluminium grating
Roof battens – mill finish profiled aluminium

Dimensions

Panel size – 6000mm (L) x 600mm (W)
Panel thickness – 13mm
Walkway spacer batten – 700mm (L) x 30mm (H)

Weight

4.5kg/per linear metre (6.4kg per m²)

Fixings

Walkway to batten – 4.5mm SD Class 3 Tek screw
Batten to roofdeck – 5mm construction grade Bulbrite rivet
Note: Max. batten increments – 670mm
(Refer instruction manual.)

Roof Pitch Installation

- > Can be installed up a slope to max 20°
- > To be levelled across a slope when greater than 7°

Working Load Limit*

Span (mm)	Max Load Capacity	Max Deflection
500mm	4.8 kPa	2.5mm
670mm	2.5 kPa	3.2mm
700mm	1.8 kPa	3.5mm

*NOTE: All deflection and/or load data is based on standard 13mm x 600mm walkway panel

Compliance

Pace 600 Walkway System is designed to comply with Australian Standard AS1657:1992 and relevant statutory OHS Codes of Practice/Guidelines.

Testing

Testing and performance based on requirements of Australian Standard AS1657:1992.

Product Warranty

10 years from date of purchase subject to correct installation, use and maintenance in accordance with manufacturer's specifications and recommendations. (Refer instruction manual.)

Inspection and Maintenance

Visual inspection for any damage or loose fixings must be done periodically and prior to use. No certified maintenance is required. Basic wear and tear preventative maintenance is recommended, as per manufacturer's specifications and recommendations. (Refer instruction manual.)

Important Note

Failure to supply and/or install proprietary product in accordance with above specification and installation/usage guidelines voids complete system certification and/or warranty.

Technical Support

Sayfa Systems

T \ 1300 301 755
F \ 1300 881 092
E \ technical@sayfa.com.au
W \ www.sayfa.com.au

Designed and manufactured by Sayfa Systems
22.03.2011