



Rigid Rail Systems

Manufactured with high-grade aluminium and stainless steel components, the RAPTOR rail system delivers rope access and effective fall protection for commercial and industrial applications.

A permanently mounted profile track system provides smooth, continuous and protected access for the user to the required area. Advanced proprietary engineering techniques enable multiple users per rail system at any one time.

RAPTOR'S retractable lanyard system allows total freedom of movement and will effectively arrest in the event of a fall. A trolley system supported inside a concealed track delivers a neat and unobtrusive design that simultaneously protects the track from surface grime. Sayfa's rigid rail system can be extended with ease and powder coated to blend in with building surrounds.

Compliance

Sayfa's range of horizontal rail systems complies with Australian Standards AS/NZS 1891.2.2001, AS/NZS 1891.4.2009 and AS/NZS4488.2.1997.

Applications

- Rope access requirement providing lateral mobility for the inspection and maintenance of building facades
- Maintenance for elevated lighting and equipment in difficult to access locations
- Fall protection for indoor maintenance and work at height
- Truck and transport maintenance fall protection.

Product Range

RAPTOR / RAPTOR GROOVE / EDGE



OH 250

RIGID RAIL SYSTEMS

OH250 RAPTOR CONFIGURATION SUMMARY PAGE

OH1 PURLIN MOUNT - IN-LINE



OH2 PURLIN MOUNT - ACROSS



OH3 FLUSH MOUNT



OH4 SUSPENDED MOUNT



OH5 CONCRETE CEILING MOUNT



OH6 METAL DECK MOUNT



OH7 SIDE/FLOOR MOUNT - 100mm



OH8 SIDE/FLOOR MOUNT - 200mm



OH1 RAPTOR RIGID RAIL, PURLIN MOUNT - IN-LINE

RAPTOR		OH255.6000 Rigid Rail - 6.0M	OH262 Splice Joiner Bar Kit (Set of 2),	OH265 End-Stop Bracket Kit	OH277.1000 3.0M Purlin Spreader with 1.0M Suspension Kit	OH281.1000 Lateral Support Brace, to suit 1.0M Suspension Kit	OH282.1000 In-Line Support Brace, to suit 1.0M Suspension Kit	OH260 Trolley - Standard	OH280 Signboard - System Information	TOTAL (ex GST)
		\$810.00 (RRP ex GST)	\$178.00 (RRP ex GST)	\$83.00 (RRP ex GST)	\$974.00 (RRP ex GST)	\$165.00 (RRP ex GST)	\$186.00 (RRP ex GST)	\$420.00 (RRP ex GST)	\$46.00 (RRP ex GST)	
CODE	LENGTH (METRES)									
OH1.006	6.0 M	1	0	2	3	3	2	2	1	\$ 5,651.00
OH1.012	12.0 M	2	1	2	5	5	2	2	1	\$8,917.00
OH1.018	18.0 M	3	2	2	7	7	2	2	1	\$12,183.00
OH1.024	24.0 M	4	3	2	9	9	2	2	1	\$15,449.00
OH1.030	30.0 M	5	4	2	11	11	2	2	1	\$18,715.00
OH1.036	36.0 M	6	5	2	13	13	2	2	1	\$21,981.00
OH1.042	42.0 M	7	6	2	15	15	2	2	1	\$25,247.00
OH1.048	48.0 M	8	7	2	17	17	2	2	1	\$28,513.00
OH1.054	54.0 M	9	8	2	19	19	2	2	1	\$31,779.00
OH1.060	60.0 M	10	9	2	21	21	2	2	1	\$35,045.00
OH1.066	66.0 M	11	10	2	23	23	2	2	1	\$38,311.00
OH1.072	72.0 M	12	11	2	25	25	2	2	1	\$41,577.00
OH1.078	78.0 M	13	12	2	27	27	2	2	1	\$44,843.00
OH1.084	84.0 M	14	13	2	29	29	2	2	1	\$48,109.00
OH1.090	90.0 M	15	14	2	31	31	2	2	1	\$51,375.00
OH1.096	96.0 M	16	15	2	33	33	2	2	1	\$54,641.00
OH1.102	102.0 M	17	16	2	35	35	2	2	1	\$57,907.00



SPAN TABLE

RAIL SUPPORT SPAN	USERS PER SPAN
3000mm	2

 2 x OH260 trolleys included. Select alternative trolley option if required.



OH2 RAPTOR RIGID RAIL, PURLIN MOUNT - ACROSS

		OH255.6000 Rigid Rail - 6.0M	OH262 Splice Joiner Bar Kit (Set of 2),	OH265 End-Stop Bracket Kit	OH279.1000 Purlin Mount Suspension Kit - 1.0M	OH281.1000 Lateral Support Brace, to suit 1.0M Suspension Kit	OH282.1000 In-Line Support Brace, to suit 1.0M Suspension Kit	OH260 Trolley - Standard	OH280 Signboard - System Information	TOTAL (ex GST)
		\$810.00 (RRP ex GST)	\$178.00 (RRP ex GST)	\$83.00 (RRP ex GST)	\$165.00 (RRP ex GST)	\$165.00 (RRP ex GST)	\$186.00 (RRP ex GST)	\$420.00 (RRP ex GST)	\$46.00 (RRP ex GST)	
CODE	LENGTH (METRES)									
OH2.006	6.0 M	1	0	2	6	3	2	2	1	\$3,905.00
OH2.012	12.0 M	2	1	2	11	5	2	2	1	\$6,203.00
OH2.018	18.0 M	3	2	2	16	7	2	2	1	\$8,501.00
OH2.024	24.0 M	4	3	2	21	9	2	2	1	\$10,799.00
OH2.030	30.0 M	5	4	2	26	11	2	2	1	\$13,097.00
OH2.036	36.0 M	6	5	2	31	13	2	2	1	\$15,395.00
OH2.042	42.0 M	7	6	2	36	15	2	2	1	\$17,693.00
OH2.048	48.0 M	8	7	2	41	17	2	2	1	\$19,991.00
OH2.054	54.0 M	9	8	2	46	19	2	2	1	\$22,289.00
OH2.060	60.0 M	10	9	2	51	21	2	2	1	\$24,587.00
OH2.066	66.0 M	11	10	2	56	23	2	2	1	\$26,885.00
OH2.072	72.0 M	12	11	2	61	25	2	2	1	\$29,183.00
OH2.078	78.0 M	13	12	2	66	27	2	2	1	\$31,481.00
OH2.084	84.0 M	14	13	2	71	29	2	2	1	\$33,779.00
OH2.090	90.0 M	15	14	2	76	31	2	2	1	\$36,077.00
OH2.096	96.0 M	16	15	2	81	33	2	2	1	\$38,375.00
OH2.102	102.0 M	17	16	2	86	35	2	2	1	\$40,673.00

Note: Configurations based on maximum purlin spacings of 1200mm



SPAN TABLE

RAIL SUPPORT SPAN	USERS PER SPAN
1200mm	2

2 x OH260 trolleys included. Select alternative trolley option if required.

OH3 RAPTOR RIGID RAIL, FLUSH MOUNT

RAPTOR		OH255.6000 Rigid Rail - 6.0M	OH262 Splice Joiner Bar Kit (Set of 2), Includes Fixings	OH265 End-Stop Bracket Kit	OH272.16 U Bracket Kit, to suit M16 Threaded Rod	OH260 Trolley - Standard	OH280 Signboard - System Information	TOTAL (ex GST)
		\$810.00 (RRP ex GST)	\$178.00 (RRP ex GST)	\$83.00 (RRP ex GST)	\$60.00 (RRP ex GST)	\$420.00 (RRP ex GST)	\$46.00 (RRP ex GST)	
CODE	LENGTH (METRES)							
OH3.006	6.0 M	1	0	2	4	2	1	\$2,102.00
OH3.012	12.0 M	2	1	2	7	2	1	\$3,270.00
OH3.018	18.0 M	3	2	2	10	2	1	\$4,438.00
OH3.024	24.0 M	4	3	2	13	2	1	\$5,606.00
OH3.030	30.0 M	5	4	2	16	2	1	\$6,774.00
OH3.036	36.0 M	6	5	2	19	2	1	\$7,942.00
OH3.042	42.0 M	7	6	2	22	2	1	\$9,110.00
OH3.048	48.0 M	8	7	2	25	2	1	\$10,278.00
OH3.054	54.0 M	9	8	2	28	2	1	\$11,446.00
OH3.060	60.0 M	10	9	2	31	2	1	\$12,614.00
OH3.066	66.0 M	11	10	2	34	2	1	\$13,782.00
OH3.072	72.0 M	12	11	2	37	2	1	\$14,950.00
OH3.078	78.0 M	13	12	2	40	2	1	\$16,118.00
OH3.084	84.0 M	14	13	2	43	2	1	\$17,286.00
OH3.090	90.0 M	15	14	2	46	2	1	\$18,454.00
OH3.096	96.0 M	16	15	2	49	2	1	\$19,622.00
OH3.102	102.0 M	17	16	2	52	2	1	\$20,790.00



SPAN TABLE

RAIL SUPPORT SPAN	USERS PER SPAN
2000mm	2

⚠ Fixings to structure not included. Select option from SD900 product selection. 2 x OH260 trolleys included. Select alternative trolley option if required.

ℹ - See OH259 RAPTOR Groove extrusion for suspended ceiling mount options.



OH4 RAPTOR RIGID RAIL, SUSPENDED MOUNT

		OH255.6000 Rigid Rail - 6.0M	OH262 Splice Joiner Bar Kit (Set of 2), Includes Fixings	OH265 End-Stop Bracket Kit	OH271.1000 Threaded Rod Suspension Kit, M16 S/S - 1.0M	OH272.16 U Bracket Kit, to suit M16 Threaded Rod	OH282.1000 In-Line Support Brace, to suit - 1.0M Suspension Kit	OH260 Trolley - Standard	OH280 Signboard - System Information	TOTAL (ex GST)
		\$810.00 (RRP ex GST)	\$178.00 (RRP ex GST)	\$83.00 (RRP ex GST)	\$90.00 (RRP ex GST)	\$60.00 (RRP ex GST)	\$186.00 (RRP ex GST)	\$420.00 (RRP ex GST)	\$46.00 (RRP ex GST)	
CODE	LENGTH (METRES)									
OH4.006	6.0 M	1	0	2	4	4	5	2	1	\$3,392.00
OH4.012	12.0 M	2	1	2	7	7	7	2	1	\$5,202.00
OH4.018	18.0 M	3	2	2	10	10	9	2	1	\$7,012.00
OH4.024	24.0 M	4	3	2	13	13	11	2	1	\$8,822.00
OH4.030	30.0 M	5	4	2	16	16	13	2	1	\$10,632.00
OH4.036	36.0 M	6	5	2	19	19	15	2	1	\$12,442.00
OH4.042	42.0 M	7	6	2	22	22	17	2	1	\$14,252.00
OH4.048	48.0 M	8	7	2	25	25	19	2	1	\$16,062.00
OH4.054	54.0 M	9	8	2	28	28	21	2	1	\$17,872.00
OH4.060	60.0 M	10	9	2	31	31	23	2	1	\$19,682.00
OH4.066	66.0 M	11	10	2	34	34	25	2	1	\$21,492.00
OH4.072	72.0 M	12	11	2	37	37	27	2	1	\$23,302.00
OH4.078	78.0 M	13	12	2	40	40	29	2	1	\$25,112.00
OH4.084	84.0 M	14	13	2	43	43	31	2	1	\$26,922.00
OH4.090	90.0 M	15	14	2	46	46	33	2	1	\$28,732.00
OH4.096	96.0 M	16	15	2	49	49	35	2	1	\$30,542.00
OH4.102	102.0 M	17	16	2	52	52	37	2	1	\$32,352.00



SPAN TABLE

RAIL SUPPORT SPAN	USERS PER SPAN
2000mm	2

⚠ Fixings to structure not included. Select option from SD900 product selection. 2 x OH260 trolleys included. Select alternative trolley option if required.

ℹ - See OH259 RAPTOR Groove extrusion for suspended ceiling mount options.

OH5 RAPTOR RIGID RAIL, CONCRETE CEILING MOUNT

RAPTOR		OH255.6000 Rigid Rail - 6.0M	OH262 Splice Joiner Bar Kit (Set of 2), Includes Fixings	OH265 End-Stop Bracket Kit	OH274 Rigid Rail Concrete Mount Fixing Bracket (Excl Fixings)	OH272.16 U Bracket Kit, to suit M16 Threaded Rod	SD985 M16 x 40mm Bolt, Washer (2), Spring Washer, Nut - S/S	OH260 Trolley - Standard	OH280 Signboard - System Information	TOTAL (ex GST)
		\$810.00 (RRP ex GST)	\$178.00 (RRP ex GST)	\$83.00 (RRP ex GST)	\$140.00 (RRP ex GST)	\$60.00 (RRP ex GST)	\$13.00 (RRP ex GST)	\$420.00 (RRP ex GST)	\$46.00 (RRP ex GST)	
CODE	LENGTH (METRES)									
OH5.006	6.0 M	1	0	2	4	4	4	2	1	\$2,714.00
OH5.012	12.0 M	2	1	2	7	7	7	2	1	\$4,341.00
OH5.018	18.0 M	3	2	2	10	10	10	2	1	\$5,968.00
OH5.024	24.0 M	4	3	2	13	13	13	2	1	\$7,595.00
OH5.030	30.0 M	5	4	2	16	16	16	2	1	\$9,222.00
OH5.036	36.0 M	6	5	2	19	19	19	2	1	\$10,849.00
OH5.042	42.0 M	7	6	2	22	22	22	2	1	\$12,476.00
OH5.048	48.0 M	8	7	2	25	25	25	2	1	\$14,103.00
OH5.054	54.0 M	9	8	2	28	28	28	2	1	\$15,730.00
OH5.060	60.0 M	10	9	2	31	31	31	2	1	\$17,357.00
OH5.066	66.0 M	11	10	2	34	34	34	2	1	\$18,984.00
OH5.072	72.0 M	12	11	2	37	37	37	2	1	\$20,611.00
OH5.078	78.0 M	13	12	2	40	40	40	2	1	\$22,238.00
OH5.084	84.0 M	14	13	2	43	43	43	2	1	\$23,865.00
OH5.090	90.0 M	15	14	2	46	46	46	2	1	\$25,492.00
OH5.096	96.0 M	16	15	2	49	49	49	2	1	\$27,119.00
OH5.102	102.0 M	17	16	2	52	52	52	2	1	\$28,746.00



SPAN TABLE

RAIL SUPPORT SPAN	USERS PER SPAN
2000mm	2

⚠ Fixings to structure not included. Select option from SD900 product selection. 2 x OH260 trolleys included. Select alternative trolley option if required.

ℹ - See OH259 RAPTOR Groove extrusion for suspended ceiling mount options.



OH 250

RIGID RAIL SYSTEMS

OH6 RAPTOR RIGID RAIL, METAL DECK MOUNT

RAPTOR		OH255.6000 Rigid Rail - 6.0M	OH262 Splice Joiner Bar Kit (Set of 2), Incl Fixings	OH263 T-Joiner Kit - 200mm	OH265 End-Stop Bracket Kit	OH253 Deck Mount Bracket and Plate Kit	OH260 Trolley - Standard	OH280 Signboard - System Information	TOTAL (ex GST)
		\$810.00 (RRP ex GST)	\$178.00 (RRP ex GST)	\$147.00 (RRP ex GST)	\$83.00 (RRP ex GST)	\$348.00 (RRP ex GST)	\$420.00 (RRP ex GST)	\$46.00 (RRP ex GST)	
CODE	LENGTH (METRES)								
OH6.006	6.0 M	1	0	0	2	3	2	1	\$2,906.00
OH6.012	12.0 M	2	1	1	2	5	2	1	\$4,737.00
OH6.018	18.0 M	3	2	2	2	7	2	1	\$6,568.00
OH6.024	24.0 M	4	3	3	2	9	2	1	\$8,399.00
OH6.030	30.0 M	5	4	4	2	11	2	1	\$10,230.00
OH6.036	36.0 M	6	5	5	2	13	2	1	\$12,061.00
OH6.042	42.0 M	7	6	6	2	15	2	1	\$13,892.00
OH6.048	48.0 M	8	7	7	2	17	2	1	\$15,723.00
OH6.054	54.0 M	9	8	8	2	19	2	1	\$17,554.00
OH6.060	60.0 M	10	9	9	2	21	2	1	\$19,385.00
OH6.066	66.0 M	11	10	10	2	23	2	1	\$21,216.00
OH6.072	72.0 M	12	11	11	2	25	2	1	\$23,047.00
OH6.078	78.0 M	13	12	12	2	27	2	1	\$24,878.00
OH6.084	84.0 M	14	13	13	2	29	2	1	\$26,709.00
OH6.090	90.0 M	15	14	14	2	31	2	1	\$28,540.00
OH6.096	96.0 M	16	15	15	2	33	2	1	\$30,371.00
OH6.102	102.0 M	17	16	16	2	35	2	1	\$32,202.00



THE OH261 TROLLEY IS USED WHEN ACCESS TO BOTH SIDES OF THE RAIL IS REQUIRED.



SPAN TABLE

RAIL SUPPORT SPAN	USERS PER SPAN
3000mm	2

2 x OH260 trolleys included. Select alternative trolley option if required.

OH7 RAPTOR RIGID RAIL, SIDE/FLOOR MOUNT - 100MM

		OH255.6000	OH262	OH265	OH263	OH266.100	OH260	OH280	TOTAL (ex GST)
		Rigid Rail - 6.0M	Splice Joiner Bar Kit (Set of 2), Includes Fixings	End-Stop Bracket Kit	T-Joiner Kit - 200mm	Side Mount Bracket and T-Nut Kit (2) - 100mm	Trolley - Standard	Signboard - System Information - 300 x 225mm	
		\$810.00 (RRP ex GST)	\$178.00 (RRP ex GST)	\$83.00 (RRP ex GST)	\$147.00 (RRP ex GST)	\$150.00 (RRP ex GST)	\$420.00 (RRP ex GST)	\$46.00 (RRP ex GST)	
CODE	LENGTH (METRES)								
OH7.006	6.0 M	1	0	2	0	4	2	1	\$2,462.00
OH7.012	12.0 M	2	1	2	1	7	2	1	\$5,433.00
OH7.018	18.0 M	3	2	2	2	10	2	1	\$7,612.00
OH7.024	24.0 M	4	3	2	3	13	2	1	\$9,791.00
OH7.030	30.0 M	5	4	2	4	16	2	1	\$11,970.00
OH7.036	36.0 M	6	5	2	5	19	2	1	\$14,149.00
OH7.042	42.0 M	7	6	2	6	22	2	1	\$16,328.00
OH7.048	48.0 M	8	7	2	7	25	2	1	\$18,507.00
OH7.054	54.0 M	9	8	2	8	28	2	1	\$20,686.00
OH7.060	60.0 M	10	9	2	9	31	2	1	\$22,865.00
OH7.066	66.0 M	11	10	2	10	34	2	1	\$25,044.00
OH7.072	72.0 M	12	11	2	11	37	2	1	\$27,223.00
OH7.078	78.0 M	13	12	2	12	40	2	1	\$29,402.00
OH7.084	84.0 M	14	13	2	13	43	2	1	\$31,581.00
OH7.090	90.0 M	15	14	2	14	46	2	1	\$33,760.00
OH7.096	96.0 M	16	15	2	15	49	2	1	\$35,939.00
OH7.102	102.0 M	17	16	2	16	52	2	1	\$38,118.00



SPAN TABLE

RAIL SUPPORT SPAN	USERS PER SPAN
2000mm	2

Fixings to structure not included. Select option from SD900 product selection.
2 x OH260 trolleys included. Select alternative trolley option if required.



OH8 RAPTOR RIGID RAIL, SIDE/FLOOR MOUNT - 200MM

		OH255.6000 Rigid Rail - 6.0M	OH262 Splice Joiner Bar Kit (Set of 2), Includes Fixings	OH265 End-Stop Bracket Kit	OH263 T-Joiner Kit - 200mm	OH266.200 Side Mount Bracket and T-Nut Kit (2) - 200mm	OH260 Trolley - Standard	OH280 Signboard - System Information	
		\$810.00 (RRP ex GST)	\$178.00 (RRP ex GST)	\$83.00 (RRP ex GST)	\$147.00 (RRP ex GST)	\$198.00 (RRP ex GST)	\$420.00 (RRP ex GST)	\$46.00 (RRP ex GST)	TOTAL (ex GST)
CODE	LENGTH (METRES)								
OH8.006	6.0 M	1	0	2	0	4	2	1	\$2,462.00
OH8.012	12.0 M	2	1	2	1	7	2	1	\$5,433.00
OH8.018	18.0 M	3	2	2	2	10	2	1	\$7,612.00
OH8.024	24.0 M	4	3	2	3	13	2	1	\$9,791.00
OH8.030	30.0 M	5	4	2	4	16	2	1	\$11,970.00
OH8.036	36.0 M	6	5	2	5	19	2	1	\$14,149.00
OH8.042	42.0 M	7	6	2	6	22	2	1	\$16,328.00
OH8.048	48.0 M	8	7	2	7	25	2	1	\$18,507.00
OH8.054	54.0 M	9	8	2	8	28	2	1	\$20,686.00
OH8.060	60.0 M	10	9	2	9	31	2	1	\$22,865.00
OH8.066	66.0 M	11	10	2	10	34	2	1	\$25,044.00
OH8.072	72.0 M	12	11	2	11	37	2	1	\$27,223.00
OH8.078	78.0 M	13	12	2	12	40	2	1	\$29,402.00
OH8.084	84.0 M	14	13	2	13	43	2	1	\$31,581.00
OH8.090	90.0 M	15	14	2	14	46	2	1	\$33,760.00
OH8.096	96.0 M	16	15	2	15	49	2	1	\$35,939.00
OH8.102	102.0 M	17	16	2	16	52	2	1	\$38,118.00



SPAN TABLE

RAIL SUPPORT SPAN	USERS PER SPAN
2000mm	2

Fixings to structure not included. Select option from SD900 product selection.
2 x OH260 trolleys included. Select alternative trolley option if required.

OH 255



OH 255.3000

Rigid Rail

- 3.0M

- 17.0kg

RRP (ex GST)

\$405.00

OH 255.4000

Rigid Rail

- 4.0M

- 23.0kg

RRP (ex GST)

\$540.00

OH 255.6000

Rigid Rail

- 6.0M

- 36.0kg

RRP (ex GST)

\$810.00

OH 255.8000

Rigid Rail

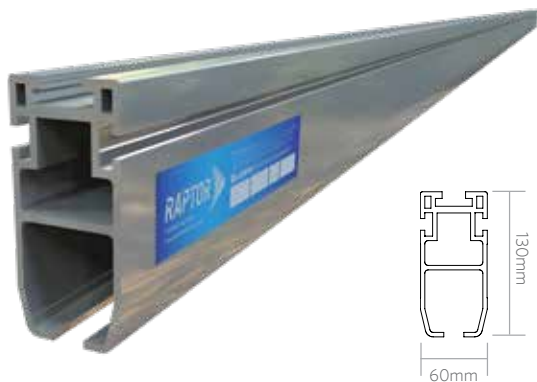
- 8.0M

- 46.0kg

RRP (ex GST)

\$1,077.00

i Please consult the sales team for supply lead times.



OH 256



OH 256C.3000

Rigid Rail, Curved
(Varying Radius)

- 3.0M

- 17.0kg

RRP (ex GST)

\$1,288.00

OH 256C.4000

Rigid Rail, Curved
(Varying Radius)

- 4.0M

- 23.0kg

RRP (ex GST)

\$1,473.00

OH 256C.6000

Rigid Rail, Curved
(Varying Radius)

- 6.0M

- 36.0kg

RRP (ex GST)

\$1,803.00

i Please consult the sales team for supply lead times.
Radius to be advised.



OH 256,90



OH 256.90

Rigid Rail Corner

- 90 degrees with

1.0M radius

- 3.0M length

- 90° x 1.0M radius

- 17.0kg

RRP (ex GST)

\$1,339.00

i Please consult the sales team for supply lead times.



OH 256V



OH 256V

Rigid Rail Corner

with 1.0M radius

- 3.0M length

- Varying degree x

1.0M radius

- 17.0kg

RRP (ex GST)

\$1,288.00

i Please consult the sales team for supply lead times.

i Degree of angle to be advised.





OH 250

RIGID RAIL SYSTEMS

OH 258C



OH 258C.3000

Rigid Rail with Groove Extrusion, Curved (Varying Radius)

- 3.0M
- 22.0kg

RRP (ex GST)
\$1,803.00

OH 258C.4000

Rigid Rail with Groove Extrusion, Curved (Varying Radius)

- 4.0M
- 28.0kg

RRP (ex GST)
\$1,906.00

OH 258.6000

Rigid Rail with Groove Extrusion, Curved (Varying Radius)

- 6.0M
- 41.0kg

RRP (ex GST)
\$2,040.00

i Please consult the sales team for supply lead times. Radius to be advised.



OH 257



OH 257.6000

Longspan Section
150 x 60 x 3.5m

- 6.0M
- 27.0kg

RRP (ex GST)
\$526.00

OH 257.8000

Longspan Section
150 x 60 x 3.5mm

- 8.0M
- 36.0kg

RRP (ex GST)
\$711.00

i Please consult the sales team for supply lead times.



i Excludes fixings. Requires SD929 M10 X 90 bolt set at 1000mm spacing

OH 258.90



OH 258.90

Rigid Rail with Groove Extrusion, Corner Kit

- 90 degrees x 1.0M Radius
- 22.0kg

RRP (ex GST)
\$1,803.00



i Please consult the sales team for supply lead times.

OH 258V



OH 258V

Rigid Rail with Groove Extrusion Corner Kit

- Varying degree x 1.0M Radius
- 22.0kg

RRP (ex GST)
\$1,545.00



i Please consult the sales team for supply lead times. Degree of angle to be advised.

OH 259



OH 259
Suspended Ceiling
Extrusion
- 3.0M
- 2.3kg
RRP (ex GST)
\$54.00



- i** For integration with suspended ceiling. Required both sides of rail. Fixings not included. Connecting to a curved rail less than 22M Radius requires OH258V.
- !** Fixings not included. Use SD907.20, 20mm self-drillers spaced at 500mm centers.

OH 262



OH 262
Splice Joiner Bar Kit
- Set of 2
- Includes Fixings
- 0.6kg
RRP (ex GST)
\$178.00



OH 260 / 261



OH 260
Trolley - Standard
- 15kN rated
- 1.5kg
RRP (ex GST) **\$420.00**



- i** For fall arrest applications

OH 261A
Trolley Dual Attachment
- Standard
- 15kN rated
- Dual attachment
- 2.6kg
RRP (ex GST) **\$498.00**



- i** For overhead rope access application.

OH 261F
Trolley Dual Attachment
- Offset
- 15kN rated
- Dual attachment
- 2.6kg
RRP (ex GST) **\$505.00**



- i** For side mounted overhead rope access application.

OH 261M
Trolley Dual Attachment
- Multi Direction
- 15kN rated
- Dual attachment
- 2.6kg
RRP (ex GST) **\$525.00**

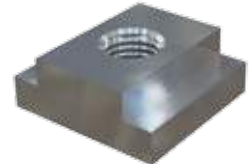


- i** For side mount to parapet and metal deck applications.

OH 264



OH 264.10
M12 Stainless Steel
T-Nut only
- 0.1kg
RRP (ex GST) **\$26.00**



OH 264.20
T-Nut Fixing Kit
- Includes 20mm bolt & spring washer
- Fixing thickness 4-7mm
- 0.1kg
RRP (ex GST) **\$29.00**



OH 264.25
T-Nut Fixing Kit
- Includes 25mm bolt, washers (4) & spring washer (1)
- Fixing thickness 7-13mm
- 0.1kg
RRP (ex GST) **\$30.00**



OH 264.30
T-Nut Fixing Kit
- Includes 30mm bolt, washers (4) & spring washer (1)
- Fixing thickness 13-18mm
- 0.1kg
RRP (ex GST) **\$30.00**





OH 250

RIGID RAIL SYSTEMS

OH 253

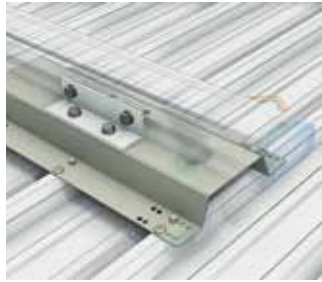


OH 253

Deck Mount Bracket & Plate Kit

- Includes fixings
- 4.0kg

RRP (ex GST)
\$348.00



See OH6 Raptor configuration table

OH 266



OH 266.100

Side Mount Bracket

- 100mm
- 100 x 100 x 10mm
- Stainless steel
- Includes T-nut fixing kit (2)
- 1.5kg

RRP (ex GST)
\$150.00



Wall mount or floor mount applications. See OH7 RAPTOR configuration table.

Minimum fixing size M16 x 150 stainless studs, chemical fixed - See SD932

OH 266.200

Side Mount Bracket

- 200mm
- 200 x 300mm
- Galvanised steel
- Includes T-nut fixing kit (2)

RRP (ex GST)
\$198.00



Wall mount or floor mount applications. Degree of angle to be advised. See OH8 RAPTOR configuration table.

Minimum fixing size M16 x 150 stainless studs, chemical fixed - See SD932

OH 263



OH 263

T-Joiner Kit

- 200mm
- Includes fixings
- 0.45kg

RRP (ex GST)
\$147.00



Additional splice used in side or metal deck mount applications.

OH 265



OH 265

End Stop Bracket Kit

- Includes fixings
- 0.5kg

RRP (ex GST)
\$83.00



OH 272



OH 272.12

U Bracket Kit to suit M12 Threaded Rod

RRP (ex GST) \$60.00

For M12 threaded rod suspension kits

OH 272.16

U Bracket Kit to suit M16 Threaded Rod

RRP (ex GST) \$60.00

For M16 threaded rod suspension kits



OH 274



OH 274

Rigid Rail Concrete Mount Fixing Bracket (Excl Fixings)
- For retrofit concrete installations

RRP (ex GST)
\$140.00



! Fixings not included. Only cast-in, through bolt or undercut fixings to be used when in tension. Fixing centres 200mm apart.

OH 275



OH 275

Fixing Bracket
- 100 x 50 x 6mm
- General mounting / bracing angle

RRP (ex GST)
\$37.00



i Connection angle used for bracing.

! Not to be used for structural static loading requirements.

OH 290



OH 290.12

M12 Tapered Gal Washer
- 6°

RRP (ex GST)
\$5.15

OH 290.16

M16 Tapered Gal Washer
- 6°

RRP (ex GST)
\$5.40



i Two required per connection. To level threaded rod droppers.

OH 270 / 271



OH 270.1000

Threaded Rod Suspension Kit
- M12 S/S - 1000mm

RRP (ex GST)
\$34.00

OH 270.2000

- M12 S/S - 2000mm

RRP (ex GST)
\$45.00

OH 270.3000

- M12 S/S - 3000mm

RRP (ex GST)
\$55.00

OH 271.1000

Threaded Rod Suspension Kit
- M16 S/S - 1000mm

RRP (ex GST)
\$90.00

OH 271.2000

- M16 S/S - 2000mm

RRP (ex GST)
\$102.00

OH 271.3000

- M16 S/S - 3000mm

RRP (ex GST)
\$116.00



i M16 required for rope access applications



OH 277 / 278



OH 277.1000
 3.0M Purlin Spreader
 with Suspension Kit
 - 1000mm
 RRP (ex GST)
 \$974.00

OH 277.2000
 3.0M Purlin Spreader
 with Suspension Kit
 - 2000mm
 RRP (ex GST)
 \$1,020.00

OH 277.3000
 3.0M Purlin Spreader
 with Suspension Kit
 - 3000mm
 RRP (ex GST)
 \$1,067.00

OH 278.1000
 4.0M Purlin Spreader
 with Suspension Kit
 - 1000mm
 RRP (ex GST)
 \$1,097.00

OH 278.2000
 4.0M Purlin Spreader
 with Suspension Kit
 - 2000mm
 RRP (ex GST)
 \$1,144.00

OH 278.3000
 4.0M Purlin Spreader
 with Suspension Kit
 - 3000mm
 RRP (ex GST)
 \$1,190.00

OH 1 RAPTOR RAIL, PURLIN MOUNT



i Used when Raptor rail mounted in-line with purlins.

OH 279



OH 279.1000
 Purlin Mount
 Suspension Kit
 - 1000mm
 RRP (ex GST)
 \$165.00

OH 279.2000
 Purlin Mount
 Suspension Kit
 - 2000mm
 RRP (ex GST)
 \$182.00

OH 279.3000
 Purlin Mount
 Suspension Kit
 - 3000mm
 RRP (ex GST)
 \$209.00

OH 2 RAPTOR RAIL, PURLIN MOUNT



i Used when Raptor rail is mounted across purlins.



TEKTIP

WHEN THE RAPTOR RAIL SUSPENSION HANGERS ARE **NOT** AT 2.0 METRE INTERVALS IT IS LIKELY THE 6.0 METRE RAIL SECTIONS WILL NEED TO BE CUT IN ORDER TO ENSURE A MAXIMUM OF 400MM CANTILEVER OFF THE SUPPORT. ADDITIONAL RAIL SECTION AS A RESULT OF THE OFFCUTS MUST BE TAKEN INTO ACCOUNT WHEN COSTING AND ORDERING RAIL SECTIONS.

OH 280



OH 280
System Information
Signboard
- Metal
- 0.1kg
RRP (ex GST)
\$29.00

RAPTOR		FOR MORE INFORMATION VISIT SAYFA.COM.AU	
INSTALL COMPANY	ID NO.	MAX USERS PER SPAN	
TEL/EMAIL		MAX USERS PER PITCH	
INSTALL DATE	DATE	LAST INSPECTED BY	DATE
	///		///
	///		///
	///		///
	///		///

NOTES

1. RAPTORS ARE DESIGNED TO BE USED WITH RAPTORS & RAPTORS.
2. RAPTORS ARE DESIGNED TO BE USED WITH RAPTORS & RAPTORS.
3. RAPTORS ARE DESIGNED TO BE USED WITH RAPTORS & RAPTORS.
4. RAPTORS ARE DESIGNED TO BE USED WITH RAPTORS & RAPTORS.
5. RAPTORS ARE DESIGNED TO BE USED WITH RAPTORS & RAPTORS.
6. RAPTORS ARE DESIGNED TO BE USED WITH RAPTORS & RAPTORS.
7. RAPTORS ARE DESIGNED TO BE USED WITH RAPTORS & RAPTORS.
8. RAPTORS ARE DESIGNED TO BE USED WITH RAPTORS & RAPTORS.
9. RAPTORS ARE DESIGNED TO BE USED WITH RAPTORS & RAPTORS.
10. RAPTORS ARE DESIGNED TO BE USED WITH RAPTORS & RAPTORS.

SAFETY: ALWAYS CONSULT TO ALL APPLICABLE STANDARDS AND REGULATIONS FOR DESIGN, INSTALLATION AND MAINTENANCE OF THIS RAILING SYSTEM.

SD 927



SD 927
M12 x 35mm Bolt,
Nut & 3 x Washer Set
- General fixing bolt
- 0.1kg
RRP (ex GST)
\$3.20



i General structure fixing for Raptor rail bracing

OH 281



OH 281.1000
Lateral Support Brace
- For 1000mm suspension kit
RRP (ex GST)
\$165.00

OH 281.2000
Lateral Support Brace
- For 2000mm suspension kit
RRP (ex GST)
\$212.00

OH 281.3000
Lateral Support Brace
- For 3000mm suspension kit
RRP (ex GST)
\$258.00



i OH281 support brace used with Raptor rail mounted across purlins only. Includes OH275 fixing bracket and T Nut.

OH 282



OH 282.1000
In-Line Support Brace
- For 1000mm suspension kit
RRP (ex GST)
\$186.00

OH 282.2000
In-Line Support Brace
- For 2000mm suspension kit
RRP (ex GST)
\$232.00

OH 282.3000
In-Line Support Brace
- For 3000mm suspension kit
RRP (ex GST)
\$382.00



i Used for 'in-line' and 'across' purlin bracing. Includes 2 x OH 275 fixing brackets and T-nut.

Testimonial

“All in all you guys are amazing and the support is really appreciated. Keep up the good work.”

