



# Contents

Knowing your timber	3
Interior Timber Preparation and Maintenance	4
Flooring Products	5
How to complete a Flooring Project	6-7
Furniture and Trim Products	8
How to complete an Interior Clears Project	9
Interior Stains	10
How to complete an Interior Stain Project	11-13
Product Guide	14-15

---

## About Cabot's

Since 1877 Samuel Cabot has manufactured a range of superior timber finishes. Cabot's timber finishes are made with pride and offer a comprehensive range of stains, varnishes, clear finishes, oil and polishes for the preservation and beautification of timber around your home. Cabot's will help you to achieve a premium finish from an easy to choose range of products and provide you with step by step information on how to do the job properly.

For more information call our customer service team on 0800 222 687 or visit [www.cabots.co.nz](http://www.cabots.co.nz)

---

# Knowing your timber

Before you begin to coat your timber, it is important to know exactly what it is. Taking this into consideration will help enhance your overall result.

Timber type	Description	Common uses
 Radiata Pine	Radiata Pine is a versatile and readily available New Zealand softwood plantation timber. It is ideal for staining.	Interior furniture, wall or ceiling lining boards, plywood, particleboard and general construction
 Western Red Cedar	Western Red Cedar is a pale to dark brown North American wood that is easy to work with. It is an extremely durable though very soft timber.	Weatherboards, fascias, windows and doors
 Rimu	Rimu is one of New Zealand's most popular native timbers. It is a versatile and exceptionally beautiful timber. It was used extensively in older character homes as both a structural and finishing timber.	Interior finishing applications, interior furniture, mouldings and trims
 Matai*	Matai is a reddish-brown, durable hardwood. It can be highly polished to a gloss sheen. The timber has excellent wearability and hardness.	Flooring timber and window sills
 Macrocarpa	Macrocarpa is a low to medium density softwood that looks and works like Kauri. It is grown in New Zealand as an exotic tree.	Flooring, wall panelling, framing, furniture, solid wood bench tops, architraves and skirtings. It can be used outside for weatherboard, soffit, facia, pergolas, decking and outdoor furniture
 Tasmanian Oak	Tasmanian Oak is a hard timber that has a uniform light beige to light pink colour and readily accepts stains and coatings.	Flooring, kitchen cupboards, wall panelling and some interior furniture
 Teak	Teak ranges in colour from golden to dark brown. It is rich in oils that help impart moderate durability and its characteristic waxy feel.	Interior and outdoor furniture
 Kwila*	Kwila is an extremely durable hardwood and is most commonly used for timber decking and outdoor furniture. A rich-brown timber, it is resistant to termites and decay, but it is susceptible to tannin bleed, which appears as a red-brown colour as water runs off the timber. It may require repeat applications of Cabot's Deck Clean.	Decking, fences, flooring and panelling

\*These woods are naturally high in extractives (gum, oil, resins and tannins).

# Interior Timber Preparation and Maintenance

## Timber Floor Cleaning

### Cabot's Floor Clean



<b>Product description:</b>	Cabot's Floor Clean is an all purpose cleaner formulated especially for use on coated interior timber and tiles. It is designed to effectively clean coated interior timber prior to recoat. It is also ideal as an everyday cleaning solution for timber floors.
<b>Features:</b>	<ul style="list-style-type: none"> <li>• Everyday cleaning solution</li> <li>• Easy to use</li> <li>• Prepares timber for recoat</li> <li>• Pleasant citrus fragrance</li> </ul>
<b>Coverage:</b>	Up to 60m <sup>2</sup> per litre
<b>Apply with:</b>	Floor mop
<b>Clean up:</b>	Water
<b>Use on:</b>	All timber finishes, tiles and painted walls

#### What is Floor Clean

An everyday timber floor cleaning solution.

#### When to use Floor Clean

1. For everyday timber floor cleaning.
2. For cleaning interior timber prior to recoat.

## Timber Floor Maintenance

### Cabot's Floor Polish



<b>Product description:</b>	Cabot's Floor Polish is a maintenance solution for rejuvenating timber floors. It prolongs the life of timber floor coatings.
<b>Features:</b>	<ul style="list-style-type: none"> <li>• Rejuvenates and protects</li> <li>• Easy-to-apply</li> <li>• Adds shine</li> <li>• Fast-drying - 1 hour</li> </ul>
<b>Coverage:</b>	Up to 60m <sup>2</sup> per litre
<b>Apply with:</b>	Floor mop
<b>Number of coats:</b>	1 coat
<b>Dry time:</b>	1 hour
<b>Clean up:</b>	Water
<b>Use on:</b>	Previously coated timber, parquetry or cork floors

#### What is Floor Polish

A sacrificial layer that resists knocks and scratches, protecting the timber floor coating below.

#### When to use Floor Polish

Periodically when the appearance of the timber floor coating needs rejuvenating (eg. every 6 months), this will prolong the life of your timber floor coating.

## Interior Timber Preparation

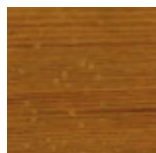
### Cabot's Wood Tone Putty



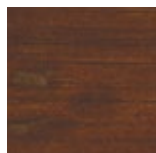
<b>Product description:</b>	Cabot's Wood Tone Putty is an interior putty for use on all interior timber. It fills holes, cracks and blemishes without shrinking.
<b>Features:</b>	<ul style="list-style-type: none"> <li>• Easy-to-use</li> <li>• Grain &amp; hole filler</li> <li>• Fast-drying</li> </ul>
<b>Apply with:</b>	Putty knife
<b>Clean up:</b>	Water
<b>Use on:</b>	All interior timber



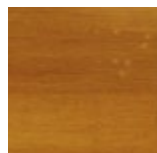
Pine



Heart Rimu



Walnut



Rimu



# Flooring Products

## Flooring Clears

Finish: natural/transparent.

### Cabot's CFP Floor Water Based



<b>Product description:</b>	Cabot's CFP Floor Water Based is a clear flooring polyurethane for all interior timber parquet and cork flooring. It is a highly durable, hard-wearing and fast-drying finish.	
<b>Features:</b>	<ul style="list-style-type: none"> <li>• No sanding required*</li> <li>• High durability</li> <li>• Resists stains and scratches</li> </ul>	<ul style="list-style-type: none"> <li>• Fast recoat - 3 hours</li> <li>• Low odour</li> <li>• Non yellowing</li> </ul>
<b>Sheen levels available:</b>	Satin or Gloss	
<b>Coverage:</b>	Up to 16m <sup>2</sup> per litre	
<b>Apply with:</b>	Brush, 6-10mm nap roller or pad applicator	
<b>Number of coats:</b>	2-3 coats	
<b>Recoat:</b>	3 hours	
<b>Clean up:</b>	Water	
<b>Use on:</b>	Timber, parquet, cork, MDF flooring and timber floating floors	

### No sanding required

- No sanding is required for pre-coated timber floors.
- Saves preparation time, cost of sanding and mess.
- See next page for 'How to' instructions.



\*No sanding required – refer to back of product for detailed instructions.

### Cabot's CFP Floor Oil Based



<b>Product description:</b>	Cabot's CFP Floor Oil Based is a clear flooring polyurethane for all timber, parquet and cork flooring. It is highly durable and has a hard-wearing finish.	
<b>Features:</b>	<ul style="list-style-type: none"> <li>• High durability</li> <li>• Resists stains &amp; scratches</li> </ul>	<ul style="list-style-type: none"> <li>• Enhances timber grain</li> <li>• Oil enriched</li> </ul>
<b>Sheen levels available:</b>	Satin or Gloss	
<b>Coverage:</b>	Up to 16m <sup>2</sup> per litre	
<b>Apply with:</b>	Brush, 6-10mm nap roller or pad applicator	
<b>Number of coats:</b>	2-3 coats	
<b>Recoat:</b>	12 hours	
<b>Clean up:</b>	Mineral Turpentine	
<b>Use on:</b>	Solid timber, parquet, cork & MDF interior flooring	

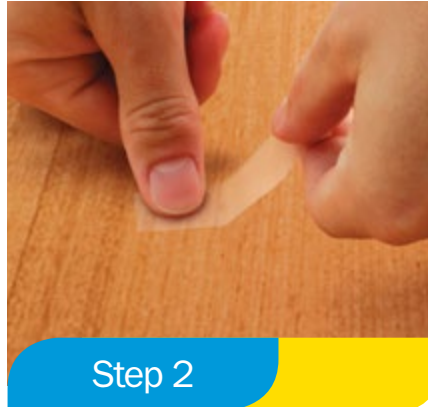
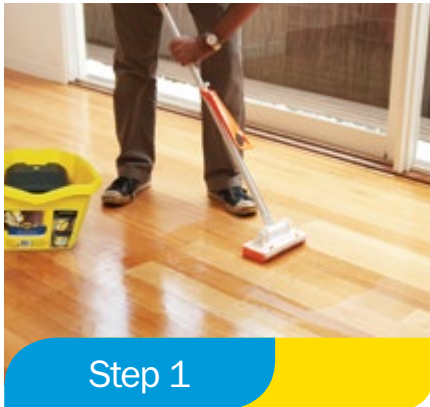
### Cabot's Laminate Floor Restore



<b>Product description:</b>	Cabot's Laminate Floor Restore is a maintenance coating for use on interior laminate floors. It is designed to rejuvenate and protect from daily wear and brings shine back to worn laminate flooring.	
<b>Features:</b>	<ul style="list-style-type: none"> <li>• Rejuvenates and provides protection to laminated floor surfaces</li> </ul>	<ul style="list-style-type: none"> <li>• 1 hour recoat</li> <li>• Water wash-up</li> </ul>
<b>Sheen levels available:</b>	Satin	
<b>Coverage:</b>	Up to 60m <sup>2</sup> per litre	
<b>Apply with:</b>	Sponge mop or Cabot's Deck Coat lambswool applicator	
<b>Number of coats:</b>	2	
<b>Recoat:</b>	1 hour	
<b>Clean up:</b>	Water	
<b>Use on:</b>	Interior laminate flooring	

# How to complete a Flooring Project

## How to coat your floors with Cabot's CFP Floor Water Based – No sanding required



### New bare timber floors

- Sand the surface smooth using 180-240 grit sandpaper, ensure that you remove all sanding dust before the first coat is applied.
- Fill any holes or cracks with Cabot's Wood Tone putty after applying your first coat of Cabot's CFP Floor Water Based for accurate colour matching.

### Previously coated timber floors

- For previously polished floors, all residual polish must be removed using a suitable floor polish remover.
- Fill any holes or cracks with Cabot's Wood Tone Putty after applying the first coat of Cabot's CFP Floor Water Based for accurate colour matching.
- Thoroughly clean the surface with Cabot's Floor Clean: Mix 2 capfuls of Floor Clean into 4 litres of water. For stubborn marks, such as black heel marks caused by shoes: Use Cabot's Floor Clean neat with a cloth. Allow to dry.
- Floors with highly visible scratches and imperfections must be sanded smooth using 180-240 grit sandpaper, ensure that you remove all traces of sanding dust before the first coat is applied.

### Previously coated timber floors, test for adhesion

- Apply one coat of CFP Floor Water Based to a small test area.
- Allow to dry for 3 hours.
- Press sticky tape firmly to the surface and pull off quickly.
- If no coating comes off, proceed to step 3.
- If some coating is removed, sand back to clean bare timber.

### Apply CFP Floor Water Based

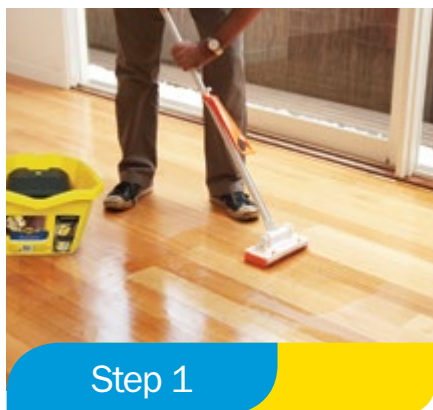
- Apply CFP Floor Water Based
- Stir can thoroughly with a broad flat paddle.
- Cut in around the edges of the floor, one section at a time with a good quality synthetic brush.
- Apply along the length of 3-4 boards with a pad applicator or 6-10mm nap roller, keeping a wet edge.
- Allow to dry for 3 hours.
- Apply 2nd/3rd coat as above.

### Note – to stain a floor

- Previously coated floors must be sanded first.
- Apply chosen colour of Cabot's Stain & Varnish Water Based as the first coat with a 6-10mm nap roller.
- Top coat with Cabot's CFP Floor Water Based as above.



## How to coat your floors with Cabot's CFP Floor Oil Based – Sanding required



### New bare timber floors

- Sand the surface smooth using 180-240 grit sandpaper, ensure that you remove all sanding dust before the first coat is applied.
- Fill any holes or cracks with Cabot's Wood Tone putty after applying your first coat of Cabot's CFP Floor Oil Based for accurate colour matching.

### Previously coated timber floors

- For previously polished floors, all residual polish must be removed using a suitable floor polish remover.
- Fill any holes or cracks with Cabot's Wood Tone Putty after applying the first coat of Cabot's CFP Floor Oil Based for accurate colour matching.
- Thoroughly clean the surface with Cabot's Floor Clean: Mix 2 capfuls of Floor Clean into 4 litres of water. For stubborn marks, such as black heel marks caused by shoes: Use Cabot's Floor Clean neat with a cloth. Allow to dry.
- Floors with highly visible scratches and imperfections must be sanded smooth using 180-240 grit sandpaper, ensure that you remove all traces of sanding dust before the first coat is applied.

### Note – to stain a floor

- Previously coated floors must be sanded first.
- Apply chosen colour of Cabot's Stain & Varnish Oil Based as the first coat with a 6-10mm nap roller.
- Top coat with Cabot's CFP Floor Oil Based as above.



### Previously coated timber floors, test for adhesion

- Sand the surface smooth using 180-240 grit sandpaper, ensure that you remove all sanding dust before the first coat is applied.
- Apply one coat of CFP Floor Oil Based to a small test area.
- Allow to dry for 12 hours.
- Press sticky tape firmly to the surface and pull off quickly.
- If no coating comes off, proceed to step 3.
- If some coating is removed, sand back to clean bare timber.



### Apply CFP Floor Oil Based

- Stir can thoroughly with a broad flat paddle.
- Cut in around the edges of the floor, one section at a time with a good quality synthetic brush.
- Apply along the length of 3-4 boards with a pad applicator or 6-10mm nap roller, keeping a wet edge.
- Allow to dry for 12 hours.
- Sand with 240 grit sand paper, ensure that you remove all traces of sanding dust before the first coat is applied.
- Apply 2nd/3rd coats as above.



# Furniture and Trim Products

## Interior clears – doors, windows, trim and furniture

Finish: natural/transparent.

### Cabot's Cabothane Clear Water Based



<b>Product description:</b>	Cabot's Cabothane Clear Water Based is a clear varnish for doors, windows, trim and furniture. It is a highly durable, hard-wearing and fast-drying varnish.
<b>Features:</b>	<ul style="list-style-type: none"> <li>• No sanding required*</li> <li>• High durability</li> <li>• Fast recoat - 2 hours</li> <li>• UV resistant</li> <li>• Low odour</li> <li>• Non-yellowing</li> </ul>
<b>Sheen levels available:</b>	Matt, Satin or Gloss
<b>Coverage:</b>	Up to 16m <sup>2</sup> per litre
<b>Apply with:</b>	Brush or spray gun
<b>Number of coats:</b>	3 coats
<b>Recoat:</b>	2 hours
<b>Clean up:</b>	Water
<b>Use on:</b>	All interior timber excluding flooring

**\*No sanding required** – Cabothane Clear Water Based eliminates the need to sand prior to coating pre-coated interior timber. Simply clean timber with Cabot's Floor Clean and re-coat, see page 5 for detailed how to instructions.

### Cabot's Cabothane Clear Oil Based



<b>Product description:</b>	Cabot's Cabothane Clear Oil Based is a clear polyurethane for doors, windows, trim and furniture. It is a highly durable, hard-wearing varnish. Now also available in easy-to-use 300g Spraypack Satin or Gloss.*
<b>Features:</b>	<ul style="list-style-type: none"> <li>• High durability</li> <li>• Resists stains &amp; scratches</li> <li>• Enhances timber grain</li> <li>• Reduced odour</li> <li>• 6 hour recoat</li> <li>• UV Resistant</li> </ul>
<b>Sheen levels available:</b>	Matt, Satin or Gloss
<b>Coverage:</b>	Up to 16m <sup>2</sup> per litre
<b>Apply with:</b>	Brush or spray gun
<b>Number of coats:</b>	3 coats
<b>Recoat:</b>	6 hours
<b>Clean up:</b>	Mineral Turpentine
<b>Use on:</b>	All interior timber excluding flooring

\*See product details for spraypacks in the Product Guide p. 14 & 15

### Cabot's Danish Oil



<b>Product description:</b>	Cabot's Danish Oil is a penetrating oil for all interior furniture, doors, windows and trim. It penetrates to provide a protective natural matt finish.
<b>Features:</b>	<ul style="list-style-type: none"> <li>• Protects timber</li> <li>• Abrasion resistant</li> <li>• Enhances natural grain</li> <li>• Easy-to-apply</li> </ul>
<b>Coverage:</b>	Up to 10m <sup>2</sup> per litre
<b>Apply with:</b>	Brush, roller or rag
<b>Number of coats:</b>	2 coats
<b>Recoat:</b>	8 hours
<b>Clean up:</b>	Mineral Turpentine
<b>Use on:</b>	All interior timber excluding flooring

### Cabot's Benchtop Clear



<b>Product description:</b>	Cabot's Benchtop Clear Water Based is a highly durable, heat and stain resistant, fast drying varnish that is safe for use on kitchen timber benchtops when the surface is fully cured.
<b>Features:</b>	<ul style="list-style-type: none"> <li>• Heat resistant*</li> <li>• High durability</li> <li>• Fast recoat - 2 hours</li> <li>• Stain resistant</li> <li>• Low odour</li> <li>• Non-yellowing</li> </ul>
<b>Sheen levels available:</b>	Clear
<b>Coverage:</b>	Up to 16m <sup>2</sup> per litre
<b>Apply with:</b>	Brush
<b>Number of coats:</b>	3 coats
<b>Recoat:</b>	2 hours
<b>Clean up:</b>	Water
<b>Use on:</b>	Timber/bamboo kitchen bench tops, tables and coffee tables

\*Heat resistant – refer to back of product for detailed instructions.



# How to complete an Interior Clears Project

## How to apply Cabothane Clear Water Based



### For bare interior timber:

Sand the surface smooth using 180-240 grit sandpaper.

### For previously coated interior timber:

1. Thoroughly clean the surface with Cabot's Floor Clean and allow to dry.
2. Apply one coat of Cabothane Clear Water Based to a small test area.
3. Allow test area to dry for 2 hours, press sticky tape firmly to the surface and pull off quickly. If any coating comes off, the surface must be sanded.



1. Stir can thoroughly with a broad flat paddle.
2. Apply with a good quality brush or spray gun.
3. Allow to dry for a minimum of 2 hours.
4. Apply 2nd and 3rd coats as above.

**Note:** For staining interior timber refer to Cabot's Stain & Varnish Water Based or Cabot's Interior Stain Water Based.

## How to apply Cabothane Clear Oil Based



### For bare interior timber:

Sand the surface smooth using 180-240 grit sandpaper.

### For previously coated interior timber:

Thoroughly clean the surface with Cabot's Floor Clean and allow to dry. Sand with 180-240 grit sandpaper.



1. Stir can thoroughly with a broad flat paddle.
2. Apply with a good quality brush or spray gun.
3. Allow to dry for a minimum of 6 hours.
4. Apply 2nd and 3rd coats as above.

**Note:** For staining interior timber refer to Cabot's Stain & Varnish Oil Based or Cabot's Interior Stain Oil Based.

# Interior Stains

## Stain & Varnishes

### Cabot's Stain & Varnish Water Based



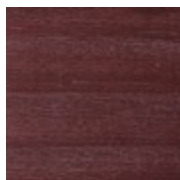
<b>Product description:</b>	Cabot's Stain & Varnish Water Based is a combined stain and varnish for all interior timber. It is easy-to-use and has a durable finish that protects the natural timber grain.	
<b>Features:</b>	<ul style="list-style-type: none"> <li>• Resists stains &amp; scratches</li> <li>• Enhances timber grain</li> </ul>	<ul style="list-style-type: none"> <li>• Fast recoat - 2 hours</li> <li>• Low odour</li> <li>• No top coat required</li> </ul>
<b>Sheen levels available:</b>	Satin or Gloss	
<b>Coverage:</b>	Up to 16m <sup>2</sup> per litre	
<b>Apply with:</b>	Brush or roller	
<b>Number of coats:</b>	3 coats	
<b>Recoat:</b>	2 hours	
<b>Top coat required:</b>	No top coat required	
<b>Clean up:</b>	Water	
<b>Use on:</b>	All interior timber	

### Cabot's Stain & Varnish Oil Based

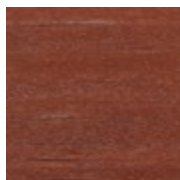


<b>Product description:</b>	Cabot's Stain & Varnish Oil Based is a combined stain and varnish for all interior timber. It provides colour and shine without hiding the grain.	
<b>Features:</b>	<ul style="list-style-type: none"> <li>• Resists stains &amp; scratches</li> <li>• Enhances timber grain</li> </ul>	<ul style="list-style-type: none"> <li>• Oil enriched</li> <li>• No top coat required</li> </ul>
<b>Sheen levels available:</b>	Satin or Gloss	
<b>Coverage:</b>	Up to 16m <sup>2</sup> per litre	
<b>Apply with:</b>	Brush or roller	
<b>Number of coats:</b>	3 coats	
<b>Recoat:</b>	8 hours	
<b>Top coat required:</b>	No top coat required	
<b>Clean up:</b>	Mineral Turpentine	
<b>Use on:</b>	All interior timber	

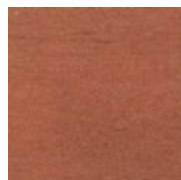
## Cabot's Interior Stain & Varnish (Water Based)



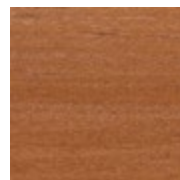
Deep Mahogany T



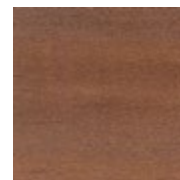
Crabwood T



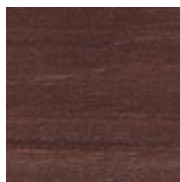
Jarrah ●



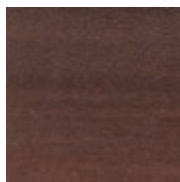
Walnut ●



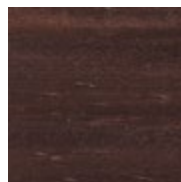
Sutherland Teak T



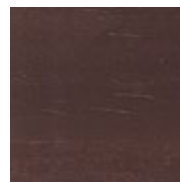
Dark Chocolate T



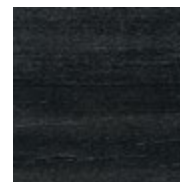
Burnt Gum T



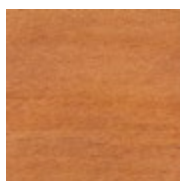
Indian Tea T



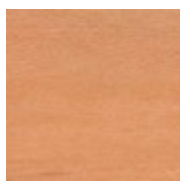
Coal T



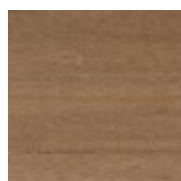
Black T



Maple ●



Vladic Pine T



Hickory T



Liming White T



● – Pre-packaged colours  
T – Tinted from Tint Base

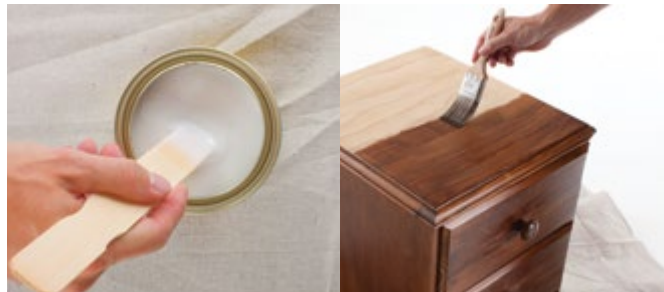
\*All colours shown are Cabot's Stain and Varnish Water Based Satin on Pine.  
Due to limitations of the printing process, photographic and printed images may not represent the true colour.

# How to Complete an Interior Stain Project

## How to apply Cabot's Stain & Varnish



**Step 1**  
Surface preparation

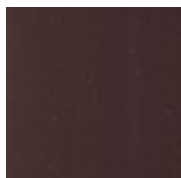


**Step 2**  
Apply the coating

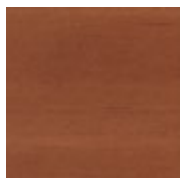
**For bare and previously coated interior timber:**  
Sand the surface smooth using 180-240 grit sandpaper.

1. Stir can thoroughly with a broad flat paddle.
2. Apply Stain & Varnish with a good quality brush or roller.
3. Allow to dry and lightly sand between coats.
4. Apply 2nd and 3rd coats as above.

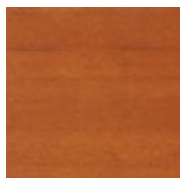
## Cabot's Interior Stain & Varnish (Oil Based)



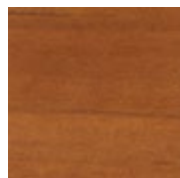
Deep Mahogany T



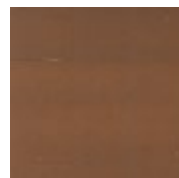
Crabwood T



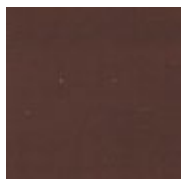
Jarrah ●



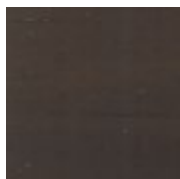
Walnut ●



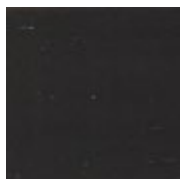
Sutherland Teak T



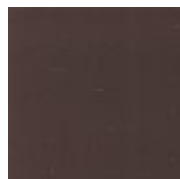
Dark Chocolate T



Burnt Gum T



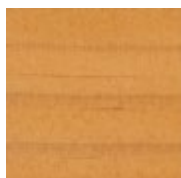
Indian Tea T



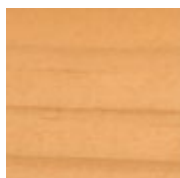
Coal T



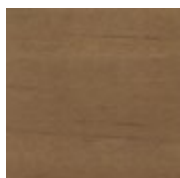
Black T



Maple ●



Vladic Pine T



Hickory T



Liming White T




● – Pre-packaged colours  
T – Tinted from Tint Base

\*All colours shown are Cabot's Stain and Varnish Oil Based Satin on Pine.

Due to limitations of the printing process, photographic and printed images may not represent the true colour.


# Interior Stains

## Interior Stains



**Cabot's Interior Stain Water Based**

<b>Product description:</b>	Cabot's Interior Stain Water Based is a penetrating stain for interior doors, windows, trim and furniture. It is easy to use and transforms the colour of interior timber.
<b>Features:</b>	<ul style="list-style-type: none"> <li>Enhances timber grain</li> <li>Easy to apply</li> <li>Fast recoat - 2 hours</li> <li>Low odour</li> <li>Clear top coat required</li> </ul>
<b>Coverage:</b>	Up to 12m <sup>2</sup> per litre
<b>Apply with:</b>	Brush, roller or rag
<b>Recoat:</b>	2 hours before applying a top coat
<b>Top coat required:</b>	Yes - use Cabot's Cabothane Clear Water Based as a top coat
<b>Clean up:</b>	Water
<b>Use on:</b>	Interior timber doors, windows, trim and furniture



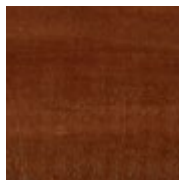
**Cabot's Interior Stain Oil Based**

<b>Product description:</b>	Cabot's Interior Stain Oil Based is a penetrating stain for interior doors, windows, trim and furniture. It rejuvenates and transforms interior timber.
<b>Features:</b>	<ul style="list-style-type: none"> <li>Enhances timber grain</li> <li>Easy-to-apply</li> <li>Penetrates timber</li> <li>Clear top coat required</li> </ul>
<b>Coverage:</b>	Up to 12m <sup>2</sup> per litre
<b>Apply with:</b>	Brush, roller or rag
<b>Recoat:</b>	8 hours before applying a top coat
<b>Top coat required:</b>	Yes - use Cabot's Cabothane Clear Oil Based as a top coat
<b>Clean up:</b>	Mineral Turpentine
<b>Use on:</b>	Interior timber doors, windows, trim and furniture

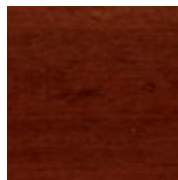
## Cabot's Interior Stain (Water Based)



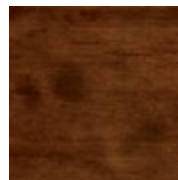
Deep Mahogany T



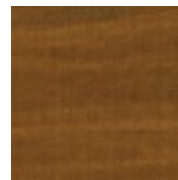
Crabwood T



Jarrah ●



Walnut ●



Sutherland Teak T



Dark Chocolate T



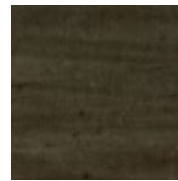
Burnt Gum T



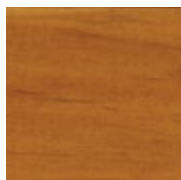
Indian Tea T



Coal T



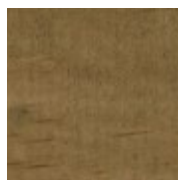
Black T



Maple ●



Vladic Pine T



Hickory T



Liming White T



● – Pre-packaged colours  
T – Tinted from Tint Base

\*All colours shown are Cabot's Interior Stain Oil Based on Pine, top coat is Cabothane Clear Satin.  
Due to limitations of the printing process, photographic and printed images may not represent the true colour.

# How to Complete an Interior Stain Project

## How to apply Cabot's Interior Stain



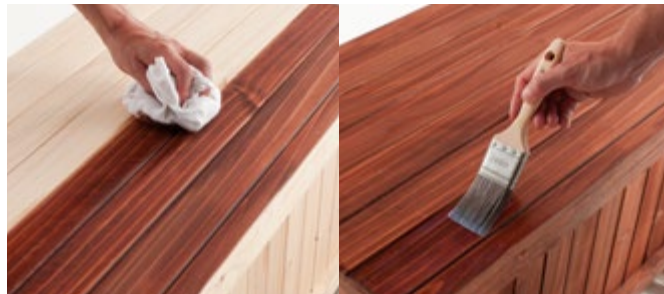
**Step 1**  
Surface preparation

**For bare interior timber:**

Sand the surface smooth using 180-240 grit sandpaper.

**For previously coated interior timber:**

Completely remove the previous coating using a paint stripper or by sanding.



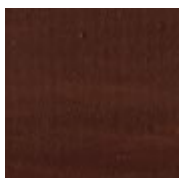
**Step 2**  
Apply the coating

1. Stir can thoroughly with a broad flat paddle.
2. Apply Interior Stain with a good quality brush, roller or rag.
3. Allow to dry.
4. Apply Cabot's Cabothane Clear as a top coat.

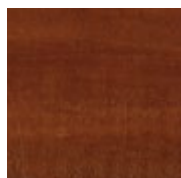


Clear Top Coats

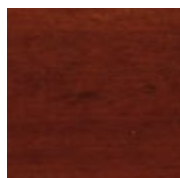
## Cabot's Interior Stain (Oil Based)



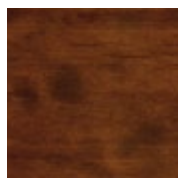
Deep Mahogany T



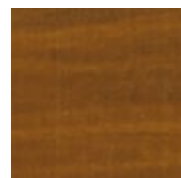
Crabwood T



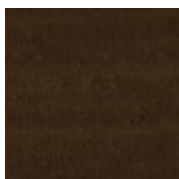
Jarrah ●



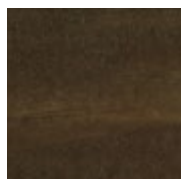
Walnut ●



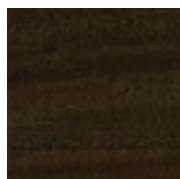
Sutherland Teak T



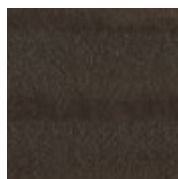
Dark Chocolate T



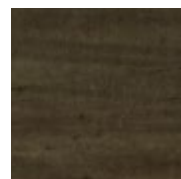
Burnt Gum T



Indian Tea T



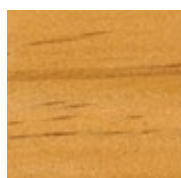
Coal T



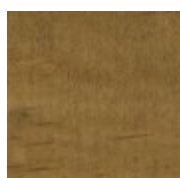
Black T



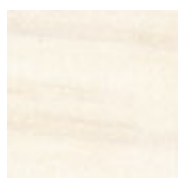
Maple ●



Vlado Pine T



Hickory T







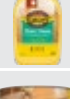

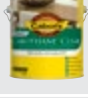




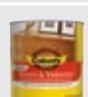

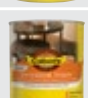
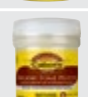
Liming White T



● – Pre-packaged colours  
T – Tinted from Tint Base

\*All colours shown are Cabot's Interior Stain Oil Based on Pine, top coat is Cabothane Clear Satin.

Due to limitations of the printing process, photographic and printed images may not represent the true colour.

PRODUCT TYPE	PRODUCT	DESCRIPTION	WHERE TO USE	PREPARATION PRODUCTS
FLOORING	 <b>CFP FLOOR WATER BASED</b>	Cabot's CFP Floor Water Based is a clear flooring polyurethane for all interior timber parquetry and cork flooring. It is a highly durable, hard wearing and fast drying finish	Solid timber, parquetry, cork, MDF interior flooring & floating floors	Cabot's Floor Clean. Fill defects & nail holes with Cabot's Wood Tone Putty
	 <b>CFP FLOOR OIL BASED</b>	Cabot's CFP Floor Oil Based is a clear flooring polyurethane for all timber, parquetry and cork flooring. It is highly durable and has a hard wearing finish	Solid timber, parquetry, cork & MDF interior flooring	Cabot's Floor Clean. Fill defects & nail holes with Cabot's Wood Tone Putty
	 <b>LAMINATE FLOOR RESTORE</b>	Cabot's Laminate Floor Restore is a maintenance coating for use on interior laminate floors. It is designed to rejuvenate and protect from daily wear and brings shine back to worn laminate flooring	Interior Laminate Flooring	Cabot's Floor Clean
	 <b>FLOOR POLISH</b>	Cabot's Floor Polish is a maintenance solution for rejuvenating timber floors. It prolongs the life of timber floor coatings	Previously coated timber, parquetry or cork floors	—
	 <b>FLOOR CLEAN</b>	Cabot's Floor Clean is an all purpose interior timber cleaner that is fast acting on grease and grime	All floor finishes including timber floors, tiles & painted walls	—
INTERIOR CLEARS	 <b>CABOTHANE CLEAR WATER BASED</b>	Cabot's Cabothane Clear Water Based is a clear polyurethane for doors, windows, trim and furniture. It is a highly durable, hard-wearing and fast-drying varnish	All interior timber excluding flooring	Cabot's Floor Clean. Fill defects & nail holes with Cabot's Wood Tone Putty
	 <b>CABOTHANE CLEAR OIL BASED</b>	Cabot's Cabothane Clear Oil Based is a clear polyurethane for doors, windows, trim and furniture. It is a highly durable, hard-wearing varnish	All interior timber excluding flooring	Fill defects & nail holes with Cabot's Wood Tone Putty
	 <b>CABOTHANE CLEAR OIL SPRAYPACK</b>	Cabot's Cabothane Clear Spray Pack is a hard-wearing varnish suitable for use on timber doors, windows, trim and furniture. It also contains UV absorbers, meaning it protects surfaces that are exposed to sunlight. Now available in a convenient spraypack, it is easier to use than ever before.	Doors, furniture, trim, windows	—
	 <b>BENCHTOP CLEAR</b>	Cabot's Benchtop Clear Water Based is a highly durable, heat* and stain resistant, fast drying varnish that is safe for use on kitchen timber benchtops when the surface is fully cured	Timber/bamboo kitchen bench tops, tables and coffee tables	Fill defects & nail holes with Cabot's Wood Tone Putty. Remove polish with a suitable polish remover.
	 <b>DANISH OIL</b>	Cabot's Danish Oil based is a penetrating oil for all interior furniture, doors, windows and trim. It penetrates to provide a protective natural matt finish	Panelling, furniture, doors & trim	Fill defects & nail holes with Cabot's Wood Tone Putty
INTERIOR STAINS	 <b>STAIN &amp; VARNISH WATER BASED</b>	Cabot's Stain & Varnish Water Based is a combined stain and varnish for all interior timber. It is easy to use and has a durable finish that protects the natural timber grain	All interior timber excluding flooring	Fill defects & nail holes with Cabot's Wood Tone Putty
	 <b>STAIN &amp; VARNISH OIL BASED</b>	Cabot's Stain & Varnish Oil Based is a penetrating stain for interior doors, windows, trim and furniture. It rejuvenates and transforms interior timber	All interior timber excluding flooring	Fill defects & nail holes with Cabot's Wood Tone Putty
	 <b>INTERIOR STAIN WATER BASED</b>	Cabot's Interior Stain Water Based is a penetrating stain for interior doors, windows, trim and furniture. It is easy to use and transforms the colour of interior timber	Interior timber doors, windows, trim and furniture	Fill defects & nail holes with Cabot's Wood Tone Putty.
	 <b>INTERIOR STAIN OIL BASED</b>	Cabot's Interior Stain Oil Based is a penetrating stain for interior doors, windows, trim and furniture. It rejuvenates and transforms interior timber	Interior timber doors, windows, trim and furniture	Fill defects & nail holes with Cabot's Wood Tone Putty
PREPARATION & MAINTENANCE	 <b>WOOD TONE PUTTY</b>	Cabot's Wood Tone Putty is an interior putty for use on all interior timber. It fills holes, cracks and blemishes without shrinking	All interior timber	—

\*Heat Resistance

FINISH/APPEARANCE	APPLY WITH	APPROX. COVERAGE RATE	NUMBER OF COATS	RE-COAT TIME	TOUCH DRY	WALK ON	CLEAN UP WITH	SIZES AVAILABLE
Clear natural finish. Available in Gloss or Satin	Brush, 6-10mm nap roller or pad applicator	Up to 16m <sup>2</sup> per litre	2-3	3 hours	30 mins	16 hours	Water	1L, 4L, 10L
Clear natural finish. Available in Gloss or Satin	Brush, 6-10mm nap roller or pad applicator	Up to 16m <sup>2</sup> per litre	2-3	12 hours	3 hours	24 hours	Mineral Turpentine	1L, 4L, 10L
Clear natural finish. Available in Satin	Sponge mop or Cabot's Deck Coat lambswool applicator	Up to 60m <sup>2</sup> per litre	2	1 hour	1 hour	4 hours	Water	1L
Natural protective sheen	Household mop	Up to 60m <sup>2</sup> per litre	1 coat	1 hour	30 mins	1 hour	Water	1L
—	Sponge mop	Up to 60m <sup>2</sup> per litre	1 coat	—	—	—	Water	1L
Clear finish. Available in Gloss, Satin or Matt	Brush or spray gun	Up to 16m <sup>2</sup> per litre	3	2 hours	30 mins	—	Water	250mL, 500mL, 1L, 4L
Clear finish. Available in Gloss, Satin or Matt	Brush or spray gun	Up to 16m <sup>2</sup> per litre	3	6 hours	2 hours	—	Mineral Turpentine	250mL, 500mL, 1L, 4L
Clear finish. Available in Satin & Gloss	—	Up to 3m <sup>2</sup> per litre	2	6 hours	—	—	Mineral Turpentine	300g
Clear finish. Available in Satin & Gloss	Brush	Up to 16m <sup>2</sup> per litre	3	2 hours	30 minutes	—	Water	1L
Matt-low sheen lustre	Brush, roller or rag	Up to 10m <sup>2</sup> per litre	2	8 hours	3 hours	—	Mineral Turpentine	500mL, 1L, 4L
Adds colour & sheen to timber in one step. Available in Gloss or Satin	Brush or roller	Up to 16m <sup>2</sup> per litre	3	2 hours	30 mins	—	Water	250mL, 1L
Adds colour & sheen to timber in one step. Available in Gloss or Satin	Brush or roller	Up to 16m <sup>2</sup> per litre	3	8 hours	2 hours	—	Mineral Turpentine	250mL, 1L
Apply a water based clear top coat	Brush, roller or rag	Up to 12m <sup>2</sup> per litre	1 (or more)	2 hours before applying a top coat	—	—	Water	250ml, 1L
Apply an oil based clear top coat	Brush, roller or rag	Up to 12m <sup>2</sup> per litre	1 (or more)	8 hours before applying a top coat	—	—	Mineral Turpentine	250mL, 1L
—	Putty knife	—	As required	Approx 2 hours. Deep holes may require longer	—	—	Water	90g

# There's always so much to do around your home!

Why not pick up the Cabot's Exterior Project Guide. It's a great thought-starter – you can probably tackle more around your home than you realise!

Alternatively you can visit our website for some great product advice and step by step project footage.

For more information please visit [www.cabots.co.nz](http://www.cabots.co.nz) or contact our Customer Service team on 0800 222 687

**[cabots.co.nz](http://cabots.co.nz)**

**@cabotsanz**  



## Scan here for instant advice

Simply hover your smartphone camera over the QR code and enter 'Hi' to get started (no QR code app needed).

# Cabot's®

Colours shown in this guide are as close as possible to actual paint colours. Due to limitations of the printing process, photographic and printed images may not represent the true colour. Printed on FSC® Certified Paper.

© Cabot's and Aquadeck are registered trade marks.  
Cabot's New Zealand, 150 Hutt Park Road, Lower Hutt, New Zealand.

