

IBS KALSIFLOOR FIBRE CEMENT BOARD

PURPOSE

IBS supplies KalsiFloor fibre cement board (KalsiFloor) or use as an internal flooring substrate or a substrate for balconies or verandahs. The boards can be finished with carpeting or vinyl for residential or office/commercial applications, or finished with a mortar screed coating for industrial and heavy duty applications. The boards can also be used as a high impact wall lining.

EXPLANATION

KalsiFloor is a fibre cement board manufactured from Portland cement, silica and organic reinforcing fibres, cured in a high-pressure steam autoclave. The boards are manufactured in accordance with AS/NZS 2908.2:2000 Cellulose-cement products – Flat sheets.

The boards are lightweight, dimensionally stable, impact resistant and moisture and mould resistant.

The boards are available in (width x length x thickness, mm):

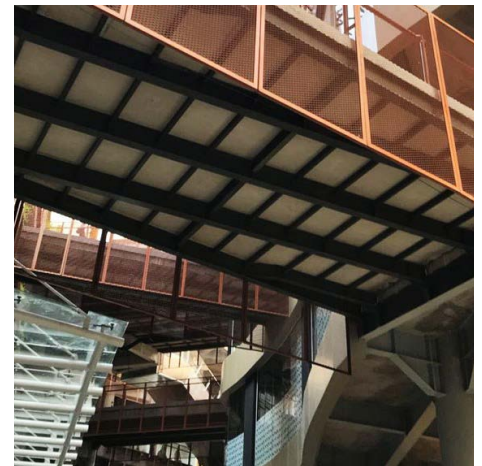
- 1200 x 2400 x 20
- 1200 x 1800 x 20.

SCOPE AND LIMITATIONS OF USE

Scope	Limitations
Building	
In conjunction with a primary structure that complies with the NZ Building Code or where the designer or installer have satisfied themselves that the existing structure is suitable for the intended building work.	
In conjunction with a structural support system of timber or lightweight steel.	<ul style="list-style-type: none"> ➤ Suitable up to a specific ULS to 6.6 kPa. ➤ Where used with steel framing, a thermal break may be required. ➤ Maximum span spacing between joists is 600 mm in accordance with AS/NZS 1170.0 to ULS 4.9 kPa.
As an internal flooring.	<ul style="list-style-type: none"> ➤ Over a structural frame with a moisture content >18% moisture content. ➤ KalsiFloor must be covered with a suitable finishing material such as a vinyl or carpet floor covering or a mortar screed coating. ➤ In wet areas, KalsiFloor must be coated with a layer that is impervious to moisture.
As a substrate for a balcony or verandah.	<ul style="list-style-type: none"> ➤ KalsiFloor must be sealed with a coating that is impervious to moisture.
As a high impact factory wall lining.	

CONDITIONS OF USE

Ensure that health and safety precautions are taken when cutting and working with KalsiFloor. Refer to the installation guide for more information.



For further assistance please contact:

- ☎ 0800 367 759
- ✉ info@ibs.co.nz
- 🌐 www.ibs.co.nz



USEFUL INFORMATION

For information on the design, installation and maintenance of KalsiFloor and for our warranty, refer to name www.ibs.co.nz.

PERFORMANCE CLAIMS

If designed, installed and maintained in accordance with all IBS requirements, the KalsiFloor will comply with or contribute to compliance with the following performance claims:

NZ Building Code clauses	BASIS OF COMPLIANCE	
	Compliance statement	Demonstrated by
B1 Structure B1.3.1, B1.3.2, B1.3.3 (a), (b), (c), (e), (f), (i), (j), (m) & (q)	ALTERNATIVE SOLUTION	<ul style="list-style-type: none"> Manufactured in accordance with AS/NZS 2908.2:2000. WOOD.BE Laboratory Span Tables in accordance with BS EN 12871:2013.
B2 Durability B2.3.1 (a), B2.3.2 (a)	ALTERNATIVE SOLUTION	<ul style="list-style-type: none"> Manufactured in accordance with AS/NZS 2908.2:2000.
C3 Fire affecting areas beyond the fire source C3.4 (a), (b), C3.7 (a)	ALTERNATIVE SOLUTION	<ul style="list-style-type: none"> Classified as Class A1, tested to EN 13501-1:2007 +A1:2009, achieves ignitability index 0, spread of flame index 0, heat evolved index 0 and smoke development index 1; tested to AS 1530.3:1999; tested to ISO 5660-1:2015 Part 1 and achieves Group 1 for heat release, smoke production and mass loss [Etex, 08/07/2021].
F2 Hazardous Building Materials F2.3.1	ALTERNATIVE SOLUTION	<ul style="list-style-type: none"> Use in accordance with manufacturer’s safety instruction [Etex, 08/07/2021].

SOURCES OF INFORMATION

➤ Etex Building Performance Indonesia. [08/07/2021] *KalsiFloor Technical Data Sheet*.

- Where a standard is referenced it is to be read as amended by the acceptable solution or verification method as applicable.
- Sources of information also include the Building Act 2004 and its regulations, including the Building Code (Schedule 1 of the Building Regulations 1992), Acceptable Solutions and Verification Methods, and relevant cited standards.
- The quality and assurance that the supplied products meet the performance claims stated in this pass™ are the responsibility of the company that is the holder of this pass™.
- Where E2/AS1 is referenced it is to be read as including E2/AS4.

Scan or click this QR code for a full download of Compliance Documentation for this pass™.
www.ibs.co.nz/products/kalsifloor/



IBS confirms that if IBS KalsiFloor fibre cement board is used in accordance with the requirements of this pass™ the product will comply with the NZ Building Code and other performance claims set out in this pass™ and the company has met all of its obligations under s14 G of the Building Act.

Date of first issue: 24/05/2022

Date of current issue: 24/05/2022

NZBN: 9429000097253

Kevin Brunton

Kevin Brunton, Technical Director, TBB confirms that this pass has been prepared on behalf of IBS and in accordance with MBIE PTS guidelines and in accordance with the TBB pass™ process which is within the scope of TBB’s ISO 9001 certification.

9606D66ADE51EA6CCC25850D00239F99