



RAUTITAN - WATER, GAS & HEATING

PRODUCT BOOK

RAUTITAN – THE NEW GENERATION

RELIABLE. VERSATILE. SECURE.



The RAUTITAN system has been developed in collaboration with our industry partners across the globe; installers, designers, builders and developers. A complete and comprehensive building technology solution for Water Services, Gas Services and Hydronic Heating, complemented by the RAUTOOL range; the RAUTITAN system is reliable, versatile and secure.

QUALITY

Developed in collaboration with designers, installers, builders and developers across the globe RAUTITAN represents the result of over 60 years experience in polymer processing and industrial manufacturing.

Produced in state-of-the-art manufacturing facilities with advance quality management processes ensure that all system components combine seamlessly delivering a reliable and robust system. Online laser monitoring of our RAUTITAN PX fittings ensure a 100% check of each fitting before it is released.

As a global supplier of materials for a diverse range of industries REHAU understands what is required to get the job done. From the world renowned PE-Xa and multi-layer (PE-X – Al – PE) pipe systems or the German engineered dezincification resistant brass and now the RAUTITAN PX PPSU fittings and easy-slide reversible PVDF sleeves.

INNOVATION

As a partner of the global construction industry for over 40 years REHAU is dedicated to meeting industry challenges such as sustainability, efficiency and reliability. With significant investment in R&D REHAU has delivered countless patents and innovations such as the new RAUTITAN PX polymer fitting. RAUTITAN PX not only provides for an easier installation with the easy-slide reversible sleeve but also provides improvements with regard to hygiene.

We continue to invest and develop new materials, designs and technology to meet the future requirements of our industry.

SERVICE

For more than 20 years REHAU has been supporting and servicing the Australia and New Zealand plumbing industry. Dedicated to ensuring our customers enjoy the best quality and service we are committed to having a qualified and local contact. With a team of **qualified technical sales managers** located across the region supported by our **central design and engineering team** in Sydney and central **customer service**.

The quality of our system is only as good as its design, installation and operation. **REHAU training academies** are available to ensure that the best of the system is realized.

25 Year
Warranty

One TOOL,
All
Applications

NEW
RAUTITAN
PX

SYSTEM OVERVIEW



	Page
RAUTITAN WATER SERVICES	5
RAUTITAN GAS SERVICES	31
RAUTITAN HYDRONIC HEATING SERVICES	43
RAUTOOL AND ACCESSORIES	75
REHAU SERVICES	87



RAUTITAN WATER SERVICES

PRODUCT LIST

RAUTITAN WATER SERVICES

RAUTITAN water service system was developed in collaboration with industry professionals in order to meet the needs of builders and the plumbing trade. Its quick and easy installation process has proven to be equally reliable. More importantly, savings can be made in time, labour and material costs.

The strength and flexibility of cross-linked high-density polyethylene (PE-Xa) pipes and PE-X/AL/PE composite pipes used together with a complete range of **RAUTITAN MX** (DZR brass) **MX** and **RAUTITAN PX** (polymer PPSU) **PX** fittings makes RAUTITAN a superior system that can be used in both residential and commercial applications.

Advantages

- Hot and cold water applications (PN20)
- Simple and fast installation
- Permanent leak-proof joint
- Inhibit corrosion and incrustation
- Colour differentiation between hot and cold water lines
- Suitable for concealed installation
- Joint integrity verified by visual inspection
- Reduces water hammer
- Maintenance free

RAUTITAN PX

Combining more than 60 years of world class expertise in polymer engineering and over 40 years of plumbing installations across the globe, REHAU is proud to announce the arrival of the RAUTITAN next generation piping system - RAUTITAN PX: a revolutionary new polymer fitting system.

RAUTITAN fittings are protected by Australian Design Registration No. 327395, 327396, 327397.

The RAUTITAN Water Services system is now Easier, Faster and More Secure.



EASIER

- REHAU's simple and secure compression sleeve joint is now even simpler. Forget about checking the sleeve end before making the joint and get the job done even quicker with the assurance that it is 100% secure.

FASTER

- The RAUTITAN PX easy-slide reversible compression joint can be completed up to 20% faster and requires 30% less effort to make a joint. By reducing the compression force, we've extended the RAUTOOL battery life by up to 45%.


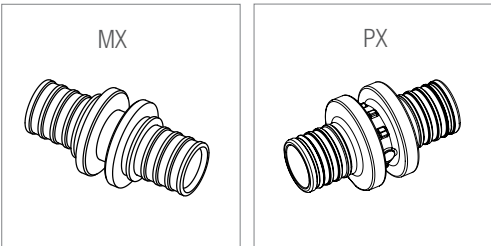
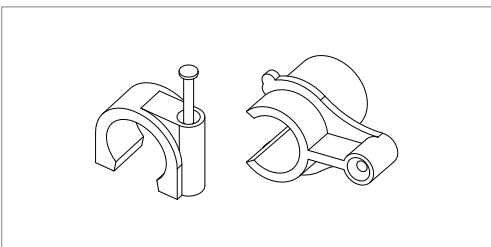


MORE SECURE

- The advanced polymer materials of RAUTITAN PX have been engineered to the highest REHAU quality standards. Tough and durable enough for any site condition, these fittings offer 100% corrosion protection and peace of mind against scrap-value theft.

MX DZR Brass material

PX Polymer PPSU / PVDF material

TABLE OF CONTENTS

	Page
	1 PIPES 8
	2 FITTINGS 12
	3 ACCESSORIES 22
	4 ASSEMBLIES 24
	5 ORDER CHECKLIST 26

In locations with known problems of fitting corrosion or where the water is or is suspected to be highly corrosive (e.g. in volcanic areas, in installations using bore/well water or in applications using water with high sulphur content, etc), there is a danger that fittings corrode quickly. The suitability and warranty coverage of the RAUTITAN pipe system in such installations require a prior independent consultation with REHAU. In some cases, the accessible or nearby water quality may also void the REHAU warranty unless appropriate water treatment is provided.

1. PIPES

RAUTITAN his 311 pipe for drinking water - black

PN 20  PE-Xa

Article	Size	m/Coil	m/Length	Package (m)	
				Coil	Straight Length
139140-005	16 x 2.2	-	5	-	50 / 250
139140-100	16 x 2.2	100	-	100	-
139150-005	20 x 2.8	-	5	-	50 / 200
139150-100	20 x 2.8	100	-	100	-
139160-005	25 x 3.5	-	5	-	25 / 100
139160-050	25 x 3.5	50	-	50	-
139170-005	32 x 4.4	-	5	-	25 / 100
139170-050	32 x 4.4	50	-	50	-
136521-005	40 x 5.5	-	5	-	10 / 50
136531-005	50 x 6.9	-	5	-	5 / 25
136541-005	63 x 8.6	-	5	-	5 / 20



Available from January 2012 - Will replace black pipe

RAUTITAN platinum for drinking water

PN 20  PE-Xa

Article	Size	m/Coil	m/Length	Package (m)	
				Coil	Straight Length
132300-005	16 x 2.2	-	5	-	100 / 250
132300-100	16 x 2.2	100	-	100	-
132310-005	20 x 2.8	-	5	-	100 / 200
132310-100	20 x 2.8	100	-	100	-
132320-005	25 x 3.5	-	5	-	25 / 100
132320-050	25 x 3.5	50	-	50	-
132330-005	32 x 4.4	-	5	-	25 / 100
132330-050	32 x 4.4	50	-	50	-
132340-005	40 x 5.5	-	5	-	10 / 50
132350-005	50 x 6.9	-	5	-	5 / 25
132360-005	63 x 8.6	-	5	-	5 / 20



Available from January 2012

RAUTITAN red for hot drinking water

PN 20  PE-Xa

Article	Size	m/Coil	m/Length	Package (m)	
				Coil	Straight Length
132520-005	16 x 2.2	-	5	-	100 / 250
132520-100	16 x 2.2	100	-	100	-
132530-005	20 x 2.8	-	5	-	100 / 200
132530-100	20 x 2.8	100	-	100	-
132540-005	25 x 3.5	-	5	-	25 / 100
132540-050	25 x 3.5	50	-	50	-



RAUTITAN lilac pipe for recycled water

PN 20  PE-Xa



Article	Size	m/Coil	Package (m)	
			Coil	Straight Length
139400-050	16 x 2.2	50	-	50
139410-050	20 x 2.8	50	-	50
139420-050 ¹⁾	25 x 3.5	50	-	50

Available from December 2011 - Will replace previously used article numbers

RAUTITAN lilac pipe for recycled water

PN 20  PE-Xa



Article	Size	m/Coil	m/Length	Package (m)	
				Coil	Straight Length
122200-050	16 x 2.2	50	-	50	-
122210-050	20 x 2.8	50	-	50	-
122220-050	25 x 3.5	50	-	50	-
122910-005	32 x 4.4	-	5	-	25 / 100
122920-005	40 x 5.5	-	5	-	10 / 50
122930-005	50 x 6.9	-	5	-	5 / 25
122940-005	63 x 8.6	-	5	-	5 / 20

Full range Available

RAUTITAN green pipe for rainwater

PN 20  PE-Xa



Article	Size	m/Coil	Package (m)	
			Coil	Straight Length
139520-050	16 x 2.2	50	-	50
139530-050	20 x 2.8	50	-	50

Available from December 2011 - Will replace previously used article numbers

RAUTITAN green pipe for rainwater

PN 20  PE-Xa



Article	Size	m/Coil	m/Length	Package (m)	
				Coil	Straight Length
104200-050	16 x 2.2	50	-	50	-
104210-050	20 x 2.8	50	-	50	-
104220-050	25 x 3.5	50	-	50	-
104230-050	32 x 4.4	50	-	50	-
104240-005	40 x 5.5	-	5	-	10 / 50
104250-005	50 x 6.9	-	5	-	5 / 25
104360-005	63 x 8.6	-	5	-	5 / 20

Full range Available

 Excellent long term pressure resistance

 Superior temperature performance (-10°C to 100°C)

 German engineered PE-Xa pipe

 Multi-layer: PE-XA/PE

¹⁾ Not standard stock

RAUTITAN stabil pipe for drinking water and radiator heating - silver

PN 20  MULTI LAYER

Article	Size	m/Coil	m/Length	Package (m)	
				Coil	Straight Length
130071-005	16.2 x 2.6	-	5	-	100
130121-100	16.2 x 2.6	100	-	100	-
130081-005	20 x 2.9	-	5	-	50
130131-100	20 x 2.9	100	-	100	-
130141-050	25 x 3.7	50	-	50	-
130091-005	25 x 3.7	-	5	-	40
130101-005	32 x 4.7	-	5	-	25
130111-005	40 x 6.0	-	5	-	15



RAUTITAN his 311 pipe in conduit for drinking water - black

PN 20  PE-Xa

Article	Size	m/Coil	Package (m)
135802-050	16 x 2.2	50	50
135812-050	20 x 2.8	50	50



Available from January 2012 - Will replace black pipe in conduit

RAUTITAN platinum pipe in conduit for drinking water

PN 20  PE-Xa

Article	Size	m/Coil	Package (m)
132280-050	16 x 2.2	50	50
132290-050	20 x 2.8	50	50



Conduit only for RAUTITAN - black

Article	Size	m/Coil	OD (mm)	ID (mm)	Package (m)
137160-025	25	25	35	28	25



 Excellent long term pressure resistance

 Superior temperature performance (-10°C to 100°C)

 German engineered PE-Xa pipe

 Multi-layer: PE-X/Al/PE

RAUTITAN his 311 pipe (black) with 13 mm concentric insulation (silver) for drinking water

 PN 20  PE-Xa



Article	Size	m/Coil	Package (m)
139610-050	16 x 2.2	50	50
139620-050	20 x 2.8	50	50

Available from January 2012 - Will replace black pipe with insulation

RAUTITAN platinum pipe with 13 mm concentric insulation (silver) for drinking water

 PN 20  PE-Xa



Article	Size	m/Coil	Package (m)
132370-050	16 x 2.2	50	50
132380-050	20 x 2.8	50	50

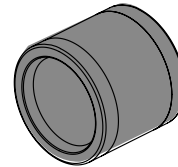
 Pre-assembled

2. FITTINGS

RAUTITAN PX compression sleeve - polymer



Article	Size	Package Piece
160001	16	100
160002	20	100
160003	25	100
160004	32	50
160005	40	25

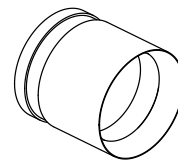


Easily-slide reversible sleeve

RAUTITAN MX compression sleeve - brass



Article	Size	Package Piece
139771	50	25
139781	63	25



RAUTITAN MX connection barb - male - brass



Article	Size	OD DN	ID DN	Package Piece
268781	16	15	-	10 / 50
268791	20	20	-	10 / 50
137007	25	25	20	10 / 50
137003	32	32	25	3 / 30
237982 ¹⁾	40	40	32	1



*OD of connection barb = copper type A or B. Copper pipe has to be expanded before brasing.
ID of connection barb = size of copper pipe to fit inside of connection barb.

RAUTITAN MX connection barb - female - brass



Article	Size	OD DN	ID DN	Package Piece
200736	16	-	15	10 / 100
200733	20	-	20	10 / 100

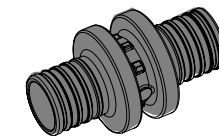
DN = Australian Copper Size type A or B.



¹⁾ Not standard stock

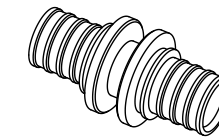


RAUTITAN PX no. 1 straight coupling - polymer



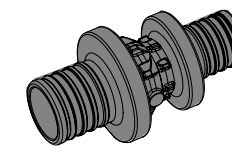
Article	Size	Package Piece/Box
160011	16	10 / 50
160012	20	10 / 50
160013	25	10 / 50
160014	32	10 / 30
160015	40	4

RAUTITAN MX no. 1 straight coupling - brass



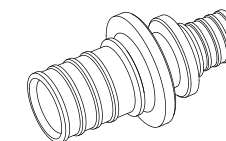
Article	Size	Package Piece/Box
139741	50	1
139751	63	1

RAUTITAN PX no. 1R reducing coupling - polymer

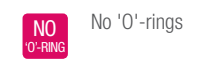
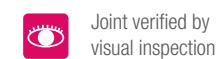


Article	Size	Package Piece/Box
160041	20 - 16	10 / 50
160042	25 - 16	10 / 50
160043	25 - 20	10 / 50
160044	32 - 25	10 / 30
160047	40 - 32	4

RAUTITAN MX no. 1R reducing coupling - brass



Article	Size	Package Piece/Box
137582	40 - 20	5 / 25
138018 ¹⁾	40 - 25	5 / 25
137863	50 - 32	1
137843	50 - 40	1
138019 ¹⁾	63 - 40	1
137853	63 - 50	1

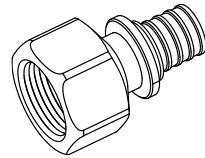


2. FITTINGS

RAUTITAN MX no. 2 straight connector - female thread - brass



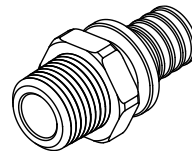
Article	Size	Package Piece/Box
259515	16 - Rp $\frac{1}{2}$ " FI	10 / 50
259525	20 - Rp $\frac{1}{2}$ " FI	10 / 50
138253	20 - Rp $\frac{3}{4}$ " FI	10 / 50
139281 ¹⁾	25 - Rp $\frac{1}{2}$ " FI	10 / 50
259535	25 - Rp $\frac{3}{4}$ " FI	10 / 50
139101	32 - Rp $\frac{3}{4}$ " FI	10 / 30
139091	32 - Rp1" FI	10 / 30



RAUTITAN MX no. 3 straight connector - male thread - brass



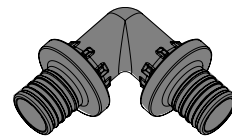
Article	Size	Package Piece/Box
137955	16 - R $\frac{1}{2}$ " MI	10 / 50
137965	16 - R $\frac{3}{4}$ " MI (Cu DN15)	10 / 50
139892	16 - R1" MI	5 / 25
137975	20 - R $\frac{1}{2}$ " MI	10 / 50
137985	20 - R $\frac{3}{4}$ " MI	10 / 50
137995	20 - R1" MI	5 / 25
139181	25 - R $\frac{1}{2}$ " MI	10 / 50
259505	25 - R $\frac{3}{4}$ " MI	10 / 50
257336	25 - R1" MI	10 / 50
139081	32 - R $\frac{3}{4}$ " MI	10 / 30
139051	32 - R1" MI	10 / 30
139691	40 - R1 $\frac{1}{4}$ " MI	5 / 25
139701	50 - R1 $\frac{1}{4}$ " MI	5 / 25
139711	50 - R1 $\frac{1}{2}$ " MI	1
139721	63 - R2" MI	1



RAUTITAN PX no. 12 elbow 90° - polymer



Article	Size	Package Piece/Box
160021	16	10 / 50
160022	20	10 / 50
160023	25	10 / 50
160024	32	3 / 30
160025	40	2



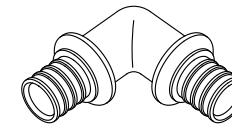
¹⁾ Not standard stock



RAUTITAN MX no. 12 elbow 90° - brass



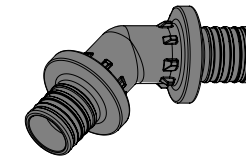
Article	Size	Package Piece/Box
139882	50	1
137873	63	1



RAUTITAN PX elbow 45° - polymer



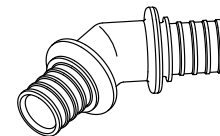
Article	Size	Package Piece
160055	40	2



RAUTITAN MX elbow 45° - brass



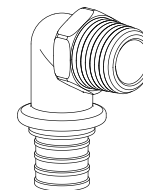
Article	Size	Package Piece
137094	50	1
137104	63	1



RAUTITAN MX no. 13 elbow - male thread - brass



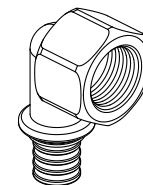
Article	Size	Package Piece/Box
139491	16 - R $\frac{1}{2}$ " MI	10 / 50
139501	20 - R $\frac{1}{2}$ " MI	10 / 50
268831	20 - R $\frac{3}{4}$ " MI	10 / 50
139511	25 - R $\frac{3}{4}$ " MI	10 / 50
137423	32 - R $\frac{3}{4}$ " MI	3 / 30
137433	32 - R1" MI	3 / 30



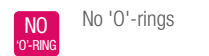
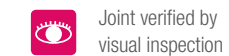
RAUTITAN MX no. 14 elbow - female thread - brass



Article	Size	Package Piece/Box
137295	16 - Rp $\frac{1}{2}$ " FI	10 / 50
137124 ¹⁾	16 - Rp $\frac{3}{4}$ " FI	10 / 50
137305	20 - Rp $\frac{1}{2}$ " FI	10 / 50
137134	20 - Rp $\frac{3}{4}$ " FI	10 / 50



¹⁾ Not standard stock



2. FITTINGS

RAUTITAN MX no. 15 BP elbow - female thread - brass



Article	Size	Package Piece/Box
137083	16 - Rp½" FI (square plate)	10 / 50
225321	16 - Rp¾" FI	25 / 100
246017	20 - Rp¾" FI	25 / 50



RAUTITAN MX no. 19 BP elbow - male thread - brass



Article	Size	Thread Length	Package Piece/Box
268841	16 - G½" B MI ext. 65 mm	32mm	25 / 50
261975	16 - G½" B MI ext. 90 mm	50mm	25 / 50
246027	16 - G½" B MI ext. 150 mm	50mm	10 / 30
235458	16 - G½" B MI ext. 170 mm	50mm	10 / 30
246037	16 - G½" B MI ext. 200 mm	50mm	10 / 30
245937	20 - G½" B MI ext. 95 mm	50mm	25 / 50
222581	20 - G½" B MI ext. 200 mm	50mm	10 / 30
235468	20 - G¾" B MI ext. 95 mm	50mm	10 / 30
222251	20 - G¾" B MI ext. 150 mm	50mm	10 / 30



RAUTITAN MX no. 19 BP elbow - with 100 mm tail - brass



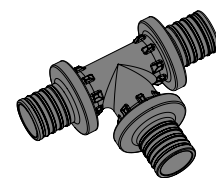
Article	Size	Package Piece
246067	16 - G½" B MI ext. 95 mm	1



RAUTITAN PX no. 24 T-piece - polymer



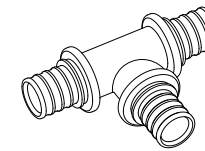
Article	Size	Package Piece/Box
160031	16	10 / 50
160032	20	10 / 50
160033	25	10 / 50
160034	32	3 / 15
160035	40	1



RAUTITAN MX no. 24 T-piece - brass



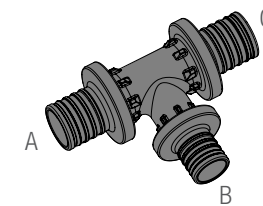
Article	Size	Package Piece/Box	Available Until
137155	50	1	
137165	63	1	



RAUTITAN PX no. 25 T-piece - reduced centre - polymer



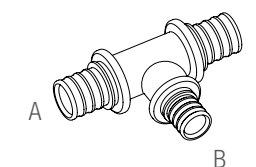
Article	Size			Package Piece/Box
	A	B	C	
160061	20	16	20	10 / 50
160062	25	16	25	10 / 50
160063	25	20	25	10 / 50
160064	32	16	32	3 / 15
160065	32	20	32	3 / 15
160066	32	25	32	3 / 15
160067	40	20	40	1
160068	40	25	40	1
160069	40	32	40	1



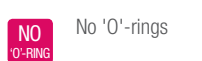
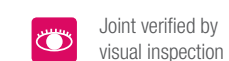
RAUTITAN MX no. 25 T-piece - reduced centre - brass



Article	Size			Package Piece/Box
	A	B	C	
230348	50	20	50	1
230358	50	25	50	1
139792	50	32	50	1
137089 ¹⁾	50	40	50	1
230328	63	20	63	1
230338	63	25	63	1
137175	63	32	63	1
137074	63	40	63	1
137084	63	50	63	1



¹⁾ Not standard stock

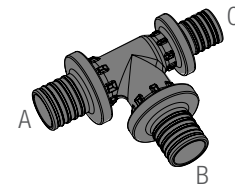


2. FITTINGS

RAUTITAN PX no. 26 T-piece - reduced end - polymer



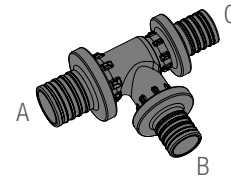
Article	Size			Package Piece/Box
	A	B	C	
160071	20	20	16	10 / 50
160072	25	25	16	10 / 50
160073	25	25	20	10 / 50
160074	32	32	20	3 / 15
160075	32	32	25	3 / 15



RAUTITAN PX no. 27 T-piece - reduced centre and end - polymer



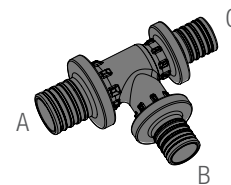
Article	Size			Package Piece/Box
	A	B	C	
160081	20	16	16	10 / 50
160082	25	16	16	10 / 50
160085	25	20	20	10 / 50
160086	32	20	20	3 / 15
160091	32	25	25	3 / 15
160092	40	32	32	1



RAUTITAN PX no. 27 T-piece - unequal reduced centre and end - polymer



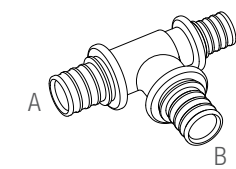
Article	Size			Package Piece/Box
	A	B	C	
160083	25	16	20	10 / 50
160084	25	20	16	10 / 50
160087	32	20	25	3 / 15
160089	32	25	20	3 / 15



RAUTITAN MX no. 27 T-piece - unequal reduced centre and end - brass



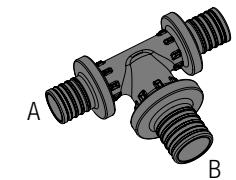
Article	Size			Package Piece/Box
	A	B	C	
137195	50	32	40	1
137205	63	32	50	1



RAUTITAN PX no. 28 T-piece - reduced ends - polymer



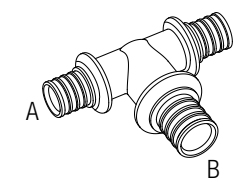
Article	Size			Package Piece/Box
	A	B	C	
160101	16	20	16	10 / 50
160102	16	25	16	10 / 50
160103	20	25	16	10 / 50
160104	20	25	20	10 / 50
160106	25	32	25	3 / 15



RAUTITAN MX no. 28 T-piece - reduced ends - brass



Article	Size			Package Piece/Box
	A	B	C	
139962	20	32	20	3 / 30



PX Polymer PPSU / PVDF material

MX DZR Brass material

DZR BRASS German engineered DZR brass

Permanent leak proof joint

All fittings suitable for concealed installation

Joint verified by visual inspection

25 years warranty (conditions apply)

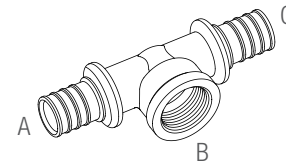
No 'O'-rings

2. FITTINGS

RAUTITAN MX no. 30 T-piece - female threaded centre - brass



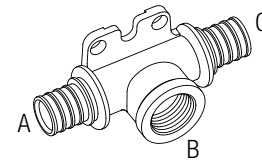
Article	Size			Package Piece/Box
	A	B	C	
258206 ¹⁾	25	Rp $\frac{3}{4}$ "	FI 25	10 / 50
139011	32	Rp $\frac{3}{4}$ "	FI 25	3 / 30
138991	32	Rp $\frac{3}{4}$ "	FI 32	3 / 30
139001	32	Rp1"	FI 25	3 / 30
138981	32	Rp1"	FI 32	3 / 30
139842	40	Rp1"	FI 32	1
139802	40	Rp1"	FI 40	1
137145	40	Rp1 $\frac{1}{4}$ "	FI 32	1
137135	40	Rp1 $\frac{1}{4}$ "	FI 40	1
139812	50	Rp1"	FI 50	1
139822	50	Rp1 $\frac{1}{4}$ "	FI 50	1
139832	63	Rp1"	FI 63	1



RAUTITAN MX no. 30 BP T-piece, wall mounted - female threaded centre - brass



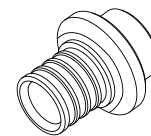
Article	Size			Package Piece/Box
	A	B	C	
138841	16	Rp $\frac{1}{2}$ "	FI 16	10 / 50
138851	20	Rp $\frac{1}{2}$ "	FI 20	10 / 50



RAUTITAN MX no. 61 stopper - brass



Article	Size	Package Piece
137793	16	10 / 50
243253	20	10 / 50



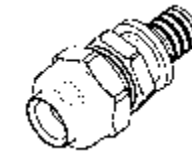
RAUTITAN MX no. 62 straight tap connector - brass



Article	Size		Package Piece/Box
	FI Nut	FI Nut	
268851	16 x G $\frac{1}{2}$ "	FI Nut (AUS)	25 / 50
228724	16 x G $\frac{1}{2}$ "	FI Nut (NZ)	25 / 50
245947	20 x G $\frac{3}{4}$ "	FI Nut (AUS)	25 / 50
228718	20 x G $\frac{3}{4}$ "	FI Nut (NZ)	25 / 50

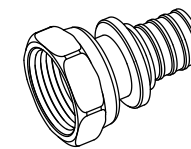


RAUTITAN MX compression union - brass



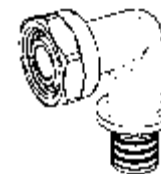
Article	Size	Package Piece/Box
226231	16 x $\frac{1}{2}$ "	25 / 100
225331	20 x $\frac{3}{4}$ "	25 / 100

RAUTITAN MX no. 62 straight tap connector with gasket - brass



Article	Size		Package Piece/Box
	FI Nut	FI Nut	
139551	16 x G $\frac{1}{2}$ "	FI Nut	10 / 50
139561	20 x G $\frac{1}{2}$ "	FI Nut	10 / 50
139571	20 x G $\frac{3}{4}$ "	FI Nut	10 / 50
139912	25 x G $\frac{3}{4}$ "	FI Nut	10 / 50
139922	25 x G1"	FI Nut	10 / 50
139932	32 x G1"	FI Nut	10 / 50
137154	32 x G1 $\frac{1}{2}$ "	FI Nut	5 / 25
137265	40 x G1 $\frac{1}{2}$ "	FI Nut	1
137164	40 x G2"	FI Nut	5 / 25
137275	50 x G1 $\frac{3}{4}$ "	FI Nut	1
137285	63 x G2 $\frac{3}{8}$ "	FI Nut	1

RAUTITAN MX no. 63 bent tap connector - brass



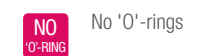
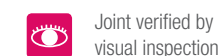
Article	Size		Package Piece/Box
	FI Nut	FI Nut	
245957	16 x G $\frac{1}{2}$ "	FI Nut (AUS)	25 / 100
228719	16 x G $\frac{1}{2}$ "	FI Nut (NZ)	25 / 100
268861	20 x G $\frac{3}{4}$ "	FI Nut (AUS)	25 / 100
228720	20 x G $\frac{3}{4}$ "	FI Nut (NZ)	25 / 100

RAUTITAN MX no. 5 lugged nipple - brass



Article	Size		Package Piece/Box
	FI Nut	FI Nut	
233814	16 x G $\frac{1}{2}$ "	B MI	25 / 100

¹⁾ Not standard stock



3. ACCESSORIES

Profile bend bracket 90° x 3D

Article	Size	Package Piece/Box
138881	16	10 / 100
138891	20	10 / 100
138351	25	10 / 50



Profile bend bracket 90° x 5D

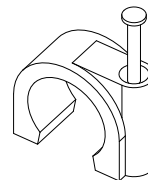
Article	Size	Package Piece/Box
258408	16	10 / 50
258798	20	10 / 50
257249	25	10 / 50
261153	32 ²⁾	5 / 50



²⁾ with spring

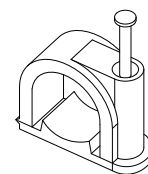
Open clip

Article	Size	Package Piece
235695	16 (masonry nail)	100
235705	20 (masonry nail)	100
235715	25 (masonry nail)	100
235725	16 (metal screw)	100
235735	20 (metal screw)	100
235745	25 (metal screw)	100

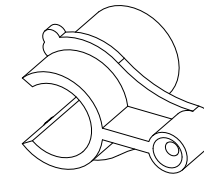


Closed clip

Article	Size	Package Piece
235605	16 (masonry nail)	100
235615	20 (masonry nail)	100
235625	25 (masonry nail)	100
235635	16 (with metal screw)	100
235645	20 (with metal screw)	100
235655	25 (with metal screw)	100
235665	16 (with timber nail)	100
235675	20 (with timber nail)	100
235685	25 (with timber nail)	100

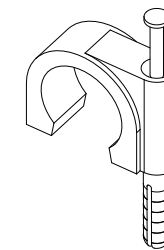


Stud clip



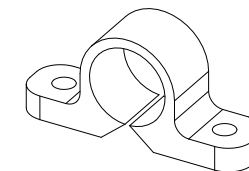
Article	Size	Package Piece
235755	16 (metal screw)	100
235765	20 (metal screw)	100
235775	25 (metal screw)	100

Anchor clip



Article	Size	Package Piece
235585	16 (with pre-drill nail)	100
235595	20 (with pre-drill nail)	100

Saddle clip



Article	Size	Package Piece
235785	16 (fixing not provided)	100
235795	20 (fixing not provided)	100
235805	25 (fixing not provided)	100

Clip-on support channel

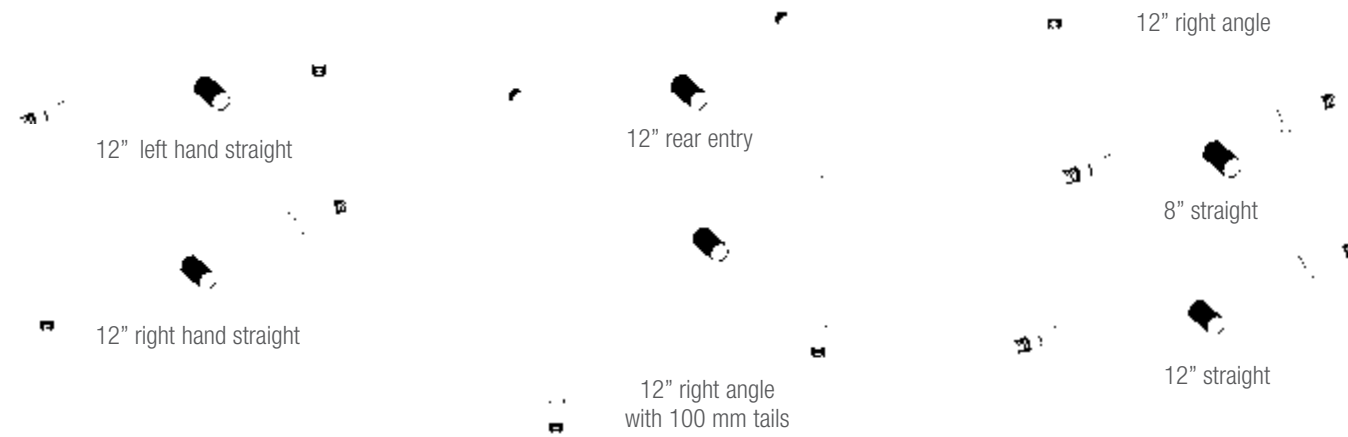


Article	Size	m/length	Package (m) Pack
138033	16	3	30
138043	20	3	30
138053	25	3	30
138063	32	3	30
138073	40	3	15
138083	50	3	15
138093	63	3	15

4. ASSEMBLIES³⁾

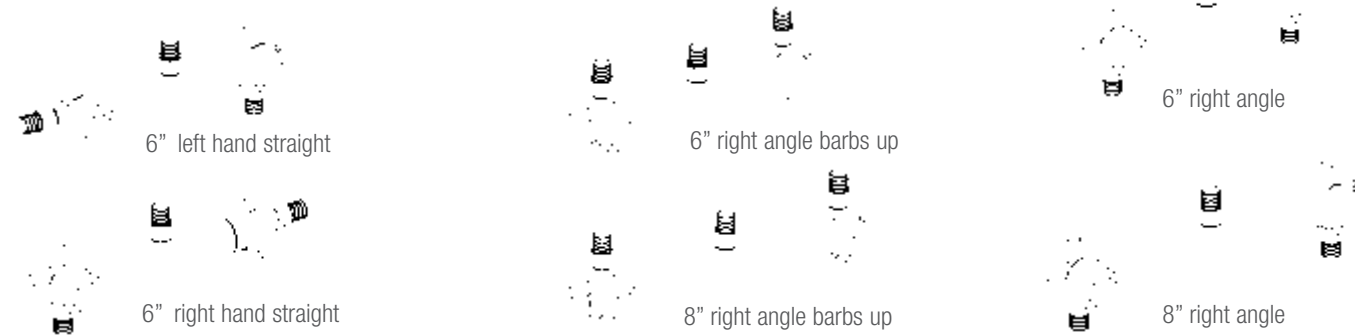
Bath/laundry assemblies

Article	Size	Package Piece/Box
261955	8" right angle	1 / 35
268881	12" right angle	1 / 30
261945	8" straight	1 / 35
268871	12" straight	1 / 30
245997	12" rear entry	1 / 30
246087	12" right angle with 100 mm tails	1 / 20
245987	12" left hand straight	1 / 30
245977	12" right hand straight	1 / 30



Shower assemblies

Article	Size	Package Piece/Box
261995	6" straight	1 / 40
268891	6" right angle	1 / 40
261965	8" right angle	1 / 35
246007	6" right angle barbs up	1 / 40
245967	8" right angle barbs up	1 / 35
246117	6" left hand straight	1 / 40
246127	6" right hand straight	1 / 40



Shower/riser and bath/shower combination

Article	Size	Package Piece/Box
246047	8" barbs up with 27" riser	1 / 5
268901	8" right angle with 27" riser	1 / 5



Hot water entry

Article	Size	Package Piece/Box
235488	16 x 900	1 / 5
235498	20 x 900	1 / 5



Copper extension - 3/4" hose tap attachment

Article	Size	Package Piece/Box
260068	20	1 / 80



³⁾ Assemblies are available in Australia only.

5. ORDER CHECKLIST

Article	Product	Quantity	Price	Article	Product	Quantity	Price
RAUTITAN PX no. 26 T-piece - reduced end - polymer				RAUTITAN MX no. 62 straight tap connector - brass			
160071	20 - 20 - 16	268851	16 x G½" FI Nut (AUS)
160072	25 - 25 - 16	228724	16 x G½" FI Nut (NZ)
160073	25 - 25 - 20	245947	20 x G¾" FI Nut (AUS)
160074	32 - 32 - 20	228718	20 x G¾" FI Nut (NZ)
160075	32 - 32 - 25	RAUTITAN MX compression union - brass			
RAUTITAN PX no. 27 T-piece - reduced centre and end - polymer				226231	16 x ½"
160081	20 - 16 - 16	225331	20 x ¾"
160082	25 - 16 - 16	RAUTITAN MX no. 62 straight tap connector with gasket - brass			
160085	25 - 20 - 20	139551	16 x G½" FI Nut
160086	32 - 20 - 20	139561	20 x G½" FI Nut
160091	32 - 25 - 25	139571	20 x G¾" FI Nut
160092	40 - 32 - 32	139912	25 x G¾" FI Nut
RAUTITAN PX no. 27 T-piece - unequal reduced centre and end - polymer				139922	25 x G1" FI Nut
160083	25 - 16 - 20	139932	32 x G1" FI Nut
160084	25 - 20 - 16	137154	32 x G1½" FI Nut
160087	32 - 20 - 25	137265	40 x G1½" FI Nut
160089	32 - 25 - 20	137164	40 x G2" FI Nut
RAUTITAN MX no. 27 T-piece - unequal reduced centre and end - brass				137275	50 x G1¾" FI Nut
137195	50 - 32 - 40	137285	63 x G2¾" FI Nut
137205	63 - 32 - 50	RAUTITAN MX no. 63 bent tap connector - brass			
RAUTITAN PX no. 28 T-piece - reduced ends - polymer				245957	16 x G½" FI Nut (AUS)
160101	16 - 20 - 16	228719	16 x G½" FI Nut (NZ)
160102	16 - 25 - 16	268861	20 x G¾" FI Nut (AUS)
160103	20 - 25 - 16	228720	20 x G¾" FI Nut (NZ)
160104	20 - 25 - 20	RAUTITAN MX no. 5 lugged nipple - brass			
160106	25 - 32 - 25	233814	16 x G½" B MI
RAUTITAN MX no. 28 T-piece - reduced ends - brass				RAUTITAN MX no. 30 T-piece - female threaded centre - brass			
139962	20 - 32 - 20	258206	25 - Rp¾" - FI 25
RAUTITAN MX no. 30 T-piece - female threaded centre - brass				139011	32 - Rp¾" - FI 25
139962	20 - 32 - 20	138991	32 - Rp¾" - FI 32
RAUTITAN MX no. 30 BP T-piece, wall mounted - female threaded centre - brass				139001	32 - Rp1" - FI 25
138841	16 - Rp½" - FI 16	138981	32 - Rp1" - FI 32
138851	20 - Rp½" - FI 20	139842	40 - Rp1" - FI 32
RAUTITAN MX no. 61 stopper - brass				139802	40 - Rp1" - FI 40
137793	16	137145	40 - Rp1¼" - FI 32
243253	20	137135	40 - Rp1¼" - FI 40

Article	Product	Quantity	Price	Article	Product	Quantity	Price
ACCESSORIES				ASSEMBLIES			
Profile bend bracket 90° x 3D				Bath/laundry assemblies			
138881	16	261955	8" right angle
138891	20	268881	12" right angle
138351	25	261945	8" straight
Profile bend bracket 90° x 5D				268871	12" straight
258408	16	245997	12" rear entry
258798	20	246087	12" right angle with 100 mm tails
257249	25	245987	12" left hand straight
261153	32 with spring	245977	12" right hand straight
Open clip				Shower assemblies			
235695	16 (masonry nail)	261995	6" straight
235705	20 (masonry nail)	268891	6" right angle
235715	25 (masonry nail)	261965	8" right angle
235725	16 (metal screw)	246007	6" right angle barbs up
235735	20 (metal screw)	245967	8" right angle barbs up
235745	25 (metal screw)	246117	6" left hand straight
Closed clip				246127	6" right hand straight
235605	16 (masonry nail)	Shower/riser and bath/shower combination			
235615	20 (masonry nail)	246047	8" barbs up with 27" riser
235625	25 (masonry nail)	268901	8" right angle with 27" riser
235635	16 (with metal screw)	Hot water entry			
235645	20 (with metal screw)	235488	16 x 900
235655	25 (with metal screw)	235498	20 x 900
235665	16 (with timber nail)	Copper extension 3/4" - hose tap attachment			
235675	20 (with timber nail)	260068	20
235685	25 (with timber nail)	Clip-on support channel			
Stud clip				138033	16
235755	16 (metal screw)	138043	20
235765	20 (metal screw)	138053	25
235775	25 (metal screw)	138063	32
Anchor clip				138073	40
235585	16 (with pre-drill nail)	138083	50
235595	20 (with pre-drill nail)	138093	63
Saddle clip				Clip-on support channel			
235785	16 (fixing not provided)	138033	16
235795	20 (fixing not provided)	138043	20
235805	25 (fixing not provided)	138053	25



RAUTITAN GAS SERVICES

PRODUCT LIST

RAUTITAN GAS SERVICES

RAUTITAN gas system was developed in collaboration with industry professionals in order to meet the needs of builders and the gas services trade. Its quick and easy installation process has proven to be equally reliable. More importantly, savings can be made in time, labour and material costs.


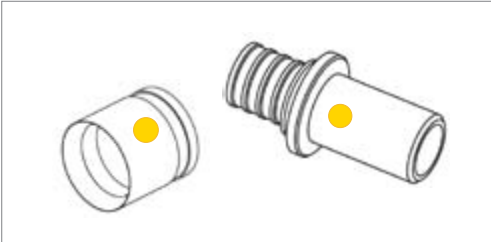
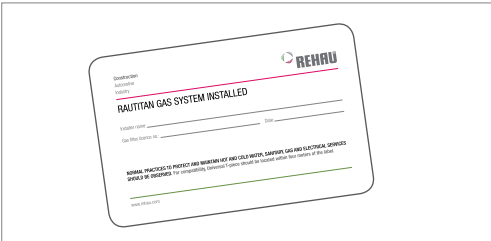

The strength and flexibility of cross-linked high-density polyethylene (PE-Xa) pipes and PE-X/AL/PE composite pipes used together with a complete range of DZR brass compression fittings makes RAUTITAN a superior system that can be used in both residential and commercial applications.

Advantages

- One Fitting, One Tool, One Connection...all applications!
- Local support and warranty
- Economic installation
- Permanent Compression Sleeve Jointing Technology
- Simple and fast installation
- Highest standards of safety and quality
- Complete range
- Independent certification
- No O-rings
- High temperature resistant
- Excellent hydraulic performance
- RAUGUARD protective conduit
- Easy identification



TABLE OF CONTENTS

	Page
	1 PIPES 34
	2 FITTINGS 35
	3. ACCESSORY 39
	4. ORDER CHECKLIST 40

In locations with known problems of fitting corrosion or where the water is or is suspected to be highly corrosive (e.g. in volcanic areas, in installations using bore/well water or in applications using water with high sulphur content, etc), there is a danger that fittings corrode quickly. The suitability and warranty coverage of the RAUTITAN pipe system in such installations require a prior independent consultation with REHAU. In some cases, the accessible or nearby water quality may also void the REHAU warranty unless appropriate water treatment is provided.

1. PIPES

RAUTITAN gas stabil pipes for gas application

Article	Size	m/Coil	m/Length	Package (m) Coil	Straight Length	New Article # Starting Dec'11
166006-005	16.2 x 2.6	-	5	-	100	
166016-005	20 x 2.9	-	5	-	50	166016 - 505
166026-005	25 x 3.7	-	5	-	40	
166036-005	32 x 4.7	-	5	-	25	166036 - 505
166046-005	40 x 6.0	-	5	-	15	
166006-100	16.2 x 2.6	100	-	100	-	166006 - 105
166016-100	20 x 2.9	100	-	100	-	166016 - 105
166026-025	25 x 3.7	25	-	25	-	
166036-525	32 x 4.7	25	-	25	-	



MOST FLEXIBLE
pipe in the market

RAUGUARD for pipe protection

Flexible metal conduit (zinc plated steel)

Article	Size	OD mm	ID mm	Package (m) Coil
166076-001	16/20	26	30	30
166086-001	25	34	38	30
166096-001	32	39	43	30
166097-001	40	50	54	10
166098-001	40+	53	56	10



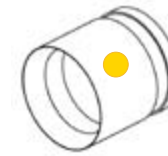
Protective conduit (PE) for pipe protection

Article	Size	OD mm	ID mm	Package (m) Coil
180252-050	16	24	19	50
180262-050	20	28	23	50
180282-025	25/32	42	36	25



2. FITTINGS

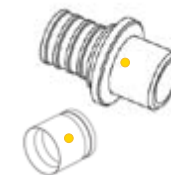
Compression sleeve



Article	Size	Package Piece/Box
166106	16	5 / 10
166116	20	5 / 10
166126	25	5 / 10
166136	32	5 / 10
166146	40	2 / 4

Separate compression sleeves are meant for spare only. All fittings come with compression sleeves in set.

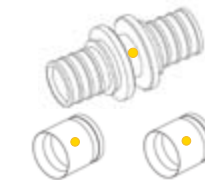
Connecting barb set



Article	Size	OD mm	ID mm	Package Piece/Box
167006	16	15	-	1 / 10
167016	20	20	-	1 / 20
167026	25	25	20	1 / 20
167036	32	32	25	1 / 10
167046	40	40	32	1

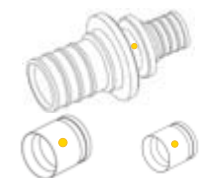
Note: DN = Australian copper size type A or B

No. 1 straight coupling set



Article	Size	Package Piece/Box
166206	16	1 / 10
166216	20	1 / 20
166226	25	1 / 20
166236	32	1 / 10
166246	40	1

No. 1R reducing coupling set



Article	Size	Package Piece/Box
166506	20 - 16	1 / 10
166009	25 - 16	1 / 10
166516	25 - 20	1 / 10
166526	32 - 25	1 / 20
166536	40 - 32	1
166546	40 - 25	1



No 'O'-rings



Each fitting has been 100% tested



German engineered DZR brass



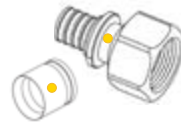
Joint verified by visual inspection

2. FITTINGS

No. 2 straight connector set, female thread



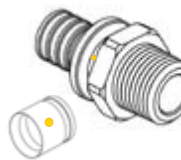
Article	Size	Package Piece/Box
166806	16 - Rp½" FI	1 / 10
166826	20 - Rp¾" FI	1 / 20
166836	25 - Rp1" FI	1 / 20
166846	25 - Rp1" FI	1 / 20
166866	32 - Rp1" FI	1 / 10
166876	40 - Rp1¼" FI	1



No. 3 straight connector set, male thread



Article	Size	Package Piece/Box
167206	16 - R½" MI	1 / 10
167216	20 - R½" MI	1 / 20
167226	20 - R¾" - L 15 MI	1 / 20
167256	25 - R¾" - L 18 MI	1 / 20
167286	32 - R1" - L 22 MI	1 / 10
167296	40 - R1¼" MI	1



No. 12 elbow 90° set



Article	Size	Package Piece/Box
166306	16	1 / 10
166316	20	1 / 20
166326	25	1 / 20
166336	32	1 / 10
166346	40	1



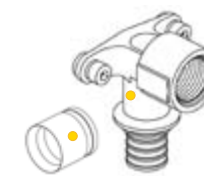
No. 13 elbow adaptor set, male thread



Article	Size	Package Piece/Box
167406	20 - R½" MI	1 / 20
167416	20 - R¾" MI	1 / 20
167176	25 - R¾" MI	1 / 20
167426	25 - R1" MI	1 / 20
167186	32 - R1" MI	1 / 10
167196	40 - R1¼" MI	1



No. 15 BP wall mounted elbow set, female thread



Article	Size	Package Piece/Box
166906	16 - Rp½" short FI	1 / 10
166926	20 - Rp¾" short FI	1 / 20
166946	25 - Rp1" short FI	1 / 20
166956	32 - Rp1" short FI	1 / 10
166966	32 - Rp1¼" short FI	1 / 10
166976	40 - Rp1¼" short FI	1 / 1

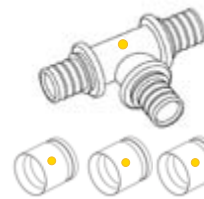
Article nos. 166956, 166966 and 166976 come with 3 lugs for fastening.

No. 19 BP wall mounted elbow set, male thread



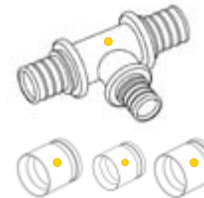
Article	Size	Package Piece/Box
167106	16 - R½" ext. 90 mm MI	1 / 10
167116	16 - R½" ext. 200 mm MI	1 / 10
167126	20 - R½" ext. 95 mm MI	1 / 20
167136	20 - R½" ext. 200 mm MI	1 / 20

No. 24 T-piece set



Article	Size	Package Piece/Box
166406	16	1 / 10
166416	20	1 / 20
166426	25	1 / 20
166436	32	1 / 10
166446	40	1 / 1

No. 25 T-piece set, reduced centre



Article	Size			Package Piece/Box
	A	B	C	
166606	20	16	20	1 / 10
166616	25	16	25	1 / 10
166626	25	20	25	1 / 20
166636	32	16	32	1 / 10
166646	32	20	32	1 / 20
166656	32	25	32	1 / 10



No 'O'-rings



Each fitting has been 100% tested



German engineered DZR brass



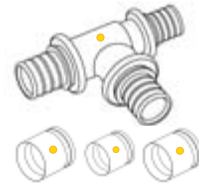
Joint verified by visual inspection

2. FITTINGS

No. 26 T-piece set, reduced end



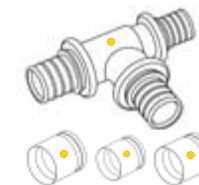
Article	Size			Package Piece/Box
	A	B	C	
167386	20	20	16	1 / 10
166666	25	25	20	1 / 20
166676	32	32	25	1 / 10



No. 27 T-piece set, reduced centre and end



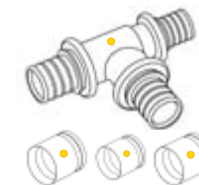
Article	Size			Package Piece/Box
	A	B	C	
167396	20	16	16	1 / 10
166686	25	20	20	1 / 20
166716*	32	25	25	1 / 10



No. 27 T-piece set, unequal reduced centre and end



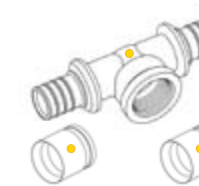
Article	Size			Package Piece/Box
	A	B	C	
166008*	25	16	20	1 / 20
167436*	25	20	16	1 / 20
166696	32	25	20	1 / 10



No. 30 T-piece set, female threaded centre



Article	Size			Package Piece/Box
	A	B	C	
166736	25	Rp $\frac{3}{4}$ " FI	25	1 / 20
166766	32	Rp1" FI	32	1 / 10
166786	40	Rp1 $\frac{1}{4}$ " FI	40	1



No. 61 stopper set



Article	Size	Package Piece/Box
167456*	20	10 / 10



* Please contact your local REHAU Sales Office for availability.



No 'O'-rings



Each fitting has been 100% tested



German engineered DZR brass



Joint verified by visual inspection

3. ACCESSORY

Gas ID label for system identification at installation site

<p> <small>Customer</small> <small>Address</small> <small>City</small> <small>Country</small> <small>Postcode</small> <small>Phone</small> <small>E-mail</small> <small>Gas ID label no.</small> </p> <p>RAUTITAN GAS SYSTEM INSTALLED</p> <p> <small>Installation date</small> <small>By</small> <small>Gas ID label no.</small> </p> <p> <small>MINIMUM PRACTICES TO PROTECT AND MAINTAIN HOT AND COLD WATER, SANITARY GAS AND ISOTHERMAL SERVICES SHOULD BE OBSERVED. For compatibility, external pipes should be located within four metres of the tank.</small> <small>www.rehau.com</small> </p>	
---	--

Article	Size	Package Piece/Box
166099	90 x 40 mm	50 / 500



RAUTITAN HYDRONIC HEATING SERVICES

PRODUCT LIST

New!

Modular polymer manifold

Universal flow temp.

RAUTITAN HYDRONIC HEATING SERVICES

THE SYSTEM



Fonterra - Hamilton, New Zealand

Drawing on over 50 years experience in the plumbing and heating industry across the globe, REHAU has developed a comprehensive hydronic heating solution that systematically addresses the needs of designers, installers, builders and homeowners alike.

RAUTITAN Hydronic Heating is an integrated system consisting of the world class RAUTITAN PE-Xa piping system or RAUTITAN stabil composite pipe, solid brass and modular polymer manifolds, numerous floor systems to meet almost any installation challenge, and a flexible and sophisticated control system to maximise the complete system performance.

The system consists of:

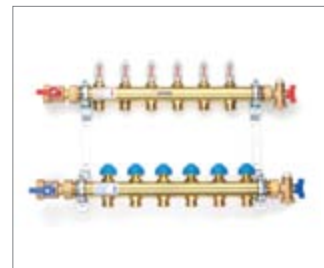
- Pipe
- Manifold
- Floor system
- Controls
- Accessories



PIPE

- Secure and robust piping (PE-Xa) system and RAUTITAN stabil composite
- Complete piping solution (sizes 16 - 40 mm)
- Maximum protection against corrosion with EVOH oxygen barrier
- More than 50 years of expected service life
- Up to 90°C or 10 bar (1,000 kpa) operating conditions

25 year warranty*



MANIFOLD

- Flexible solution for all installations - pre-assembled or modular system
- Slim line design for fixing in narrow wall spaces
- In-built flow meter for easy balancing and commissioning

NEW polymer modular manifold available



FLOOR SYSTEM

- Tacker Sheet EPS insulation board is a fast and simple clipping system, which provides superior performance for the user
- Heat Diffusion plates provide the perfect solution for suspended timber joist construction
- Floating Floor pre-routed insulation board system ensures the perfect pipe installation and excellent response time
- Suitable for new built or renovation projects

Maximise system response

* conditions apply



CONTROL

- Low voltage and simple set-up ensure each job is completed safely and with minimal time
- Plug-in modular components ensure the system is scalable to any project big or small
- Comprehensive range of modern design room thermostats with a variety of functionality specifically designed for underfloor heating!
- Comprehensive range of thermostatic and motorized zone valves
- Universal Flow Temperature Control plus optimal outdoor sensor for optimised efficiency



ACCESSORIES

- Simple, secure and reliable compression sleeve jointing technology
- RAUTOOL – professional range of manual, battery and electric hydraulic tool kits to suit every installer's needs.
- New – RAUTOOL A3, RAUTOOL A-Light 2

NEW weather compensation

1 Tool, 1 Fitting, 1 Connection... all applications

NEW – REHAU PROJECT DESIGN SERVICE

for assistance with your next project.

Australia contact : 1300 768 033

New Zealand contact : +64 9 272 2264

Email : designassist.anz@rehau.com

REHAU Hydronic Heating Service is suitable for residential as well as commercial and industrial projects, such as:



Cold stores



Churches



Car dealer showrooms

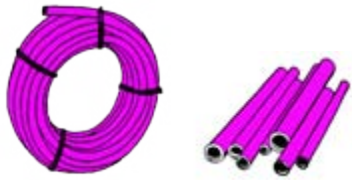
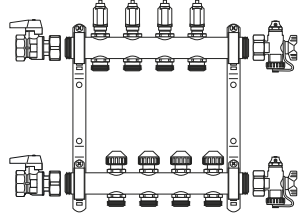
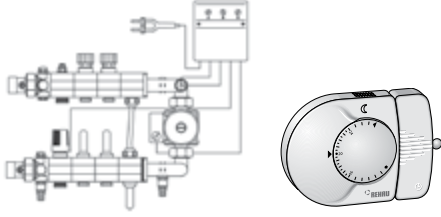
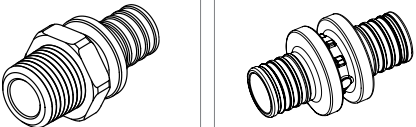



Residential buildings



Universities

TABLE OF CONTENTS

    	<p>1. FLOOR SYSTEMS</p> <p>Pipe 47</p> <p>Brass Manifold 48</p> <p>Polymer Manifold..... 49</p> <p>Manifold Accessories 53</p> <p>Wet System..... 54</p> <p>Dry System 57</p> <p>2. CONTROLS</p> <p>Zone Control 60</p> <p>Flow Temperature Control..... 62</p> <p>3. ACCESSORIES</p> <p>Conduit and Fittings..... 66</p> <p>4. ORDER CHECKLIST 70</p>	<p>Page</p>
--	--	-------------

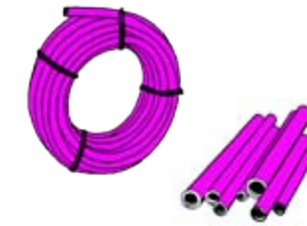
In locations with known problems of fitting corrosion or where the water is or is suspected to be highly corrosive (e.g. in volcanic areas, in installations using bore/well water or in applications using water with high sulphur content, etc), there is a danger that fittings corrode quickly. The suitability and warranty coverage of the RAUTITAN pipe system in such installations require a prior independent consultation with REHAU. In some cases, the accessible or nearby water quality may also void the REHAU warranty unless appropriate water treatment is provided.

1. FLOOR SYSTEMS PIPE

RAUTITAN pink pipe



RAUTITAN pink pipe is made from peroxide-crosslinked polyethylene (PE-Xa) with an oxygen barrier.



Article	Size	m/Coil	m/Length	Package (m)	
				Coil	Straight Length
136042-006	16 x 2.2	-	6	-	60 / 600
136042-200	16 x 2.2	200	-	200	-
136052-006	20 x 2.8	-	6	-	60 / 360
136052-120	20 x 2.8	120	-	120	-
136062-006	25 x 3.5	-	6	-	30 / 240
136062-050	25 x 3.5	50	-	50	-
136072-005	32 x 4.4	-	6	-	30 / 150
136072-050	32 x 4.4	50	-	50	-
136082-006	40 x 5.5	-	6	-	12 / 108

**TOUGHEST
PIPE on
the market!**

RAUTITAN stabil pipe



Multi-layer pipe consisting of self-supporting pressure resistant inner layer of cross-linked polyethylene; middle layer of butt welded aluminum and polyethylene outer coating. Durable heat resistant primer provides superior adhesion performance ensuring the three layers behave as one over the service life.



Article	Size	m/Coil	m/Length	Package (m)	
				Coil	Straight Length
130071-005	16.2 x 2.6	-	5	-	100
130121-100	16.2 x 2.6	100	-	100	-
130081-005	20 x 2.9	-	5	-	50
130131-100	20 x 2.9	100	-	100	-
130141-050	25 x 3.7	50	-	50	-
130091-005	25 x 3.7	-	5	-	40
130101-005	32 x 4.7	-	5	-	25
130111-005	40 x 6.0	-	5	-	15

**UNIVERSAL PIPE
for plumbing and
heating applications**

Note: Other pipe lengths are available for projects. Please check with your local REHAU Sales Office for availability.

1) Non-standard item in Australia and New Zealand, please check with your local REHAU Sales Office for availability.

PN 20 Excellent long term pressure resistance

Superior temperature performance (-10°C to 100°C)

PE-Xa German engineered PE-Xa pipe

Oxygen barrier for corrosion protection

MULTI LAYER Multi-layer: PE-X/Al/PE

1. FLOOR SYSTEMS

BRASS MANIFOLD

Brass flow meter manifold system



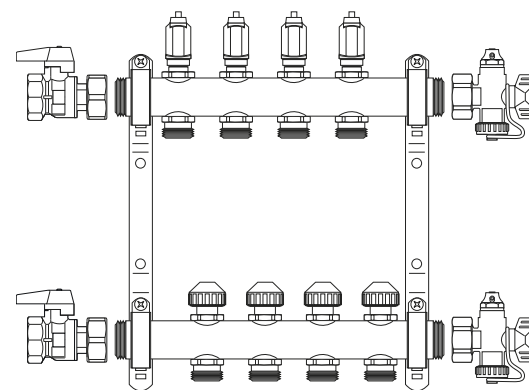
Solid brass manifolds delivered pre-assembled and ready to install. Comprising 2 x 1" flow and return sections mounted on galvanised brackets. Well engineered robust construction and slim dimensions facilitate fixing in narrow wall spaces. (For connection to pipe, see manifold unions on page 51). Circuit screw connections 3/4" external thread euro-cone for polymer or multi-layer pipes.

In the context of constantly improving our products, REHAU have been able to improve the flow meter manifolds. Individual circuits can now be closed off by turning the heads of the flow meters.

Each manifold set includes:

- Combined flow meter and quick-stop
- 2x 1" isolating ball valves with washers
- 2x combination isolating / venting and drain valves with washers
- Galvanised brackets with sound insulation inserts
- Labels for identifying circuits
- 1x balancing key
- 1x set of fixing screws

Article	Description	Package Piece
240021	Brass flow meter manifold system - HKV - D 2 (2 port)	1
240031	Brass flow meter manifold system - HKV - D 3 (3 port)	1
240041	Brass flow meter manifold system - HKV - D 4 (4 port)	1
240051	Brass flow meter manifold system - HKV - D 5 (5 port)	1
240061	Brass flow meter manifold system - HKV - D 6 (6 port)	1
240071 ¹⁾	Brass flow meter manifold system - HKV - D 7 (7 port)	1
240081	Brass flow meter manifold system - HKV - D 8 (8 port)	1
240091 ¹⁾	Brass flow meter manifold system - HKV - D 9 (9 port)	1
240101	Brass flow meter manifold system - HKV - D 10 (10 port)	1
240111 ¹⁾	Brass flow meter manifold system - HKV - D 11 (11 port)	1
240121	Brass flow meter manifold system - HKV - D 12 (12 port)	1



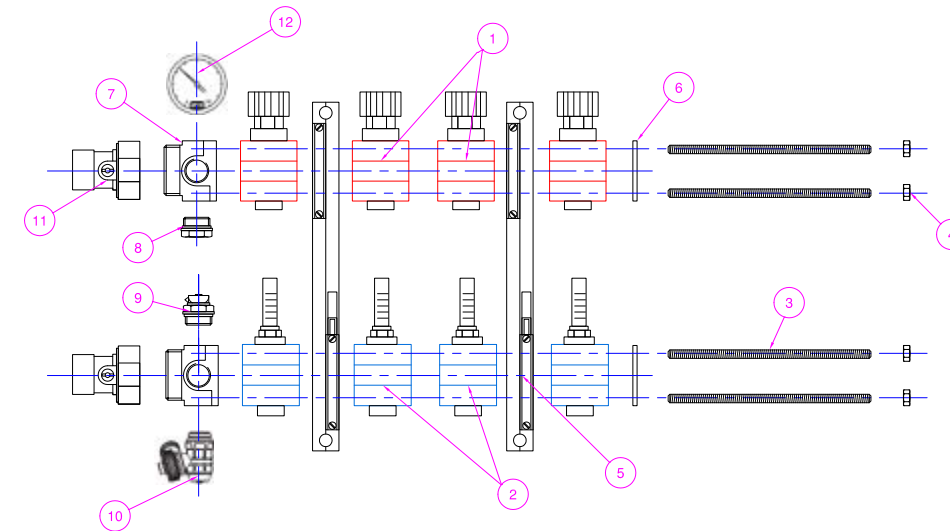
¹⁾ Non-standard item in Australia and New Zealand. Please check with your local REHAU Sales Office for availability.



1. FLOOR SYSTEMS

POLYMER MANIFOLD

Polymer manifold system²⁾



REHAU introduces a NEW modular polymer manifold for the ultimate on-site flexibility. Arrange any combination of blocks to achieve the desired number of ports.

Individual modules are made of reinforced fibreglass and thermal resistant polymer material with integrated air chambers. To differentiate between inlet and outlet, modules are available in red and blue. Operating temperature from -20°C to +90°C. Supply module with integrated shut-off, change over to actuator possible. Return module with integrated, adjustable flowmeter, lead-sealable cap.

Connection block with 1 1/2" external thread, 1" internal thread, 4 additional 1/2" holes for air vent, fill and drain valve, thermometer. Service connection right or left possible. Circuit screw connections 3/4" male thread euro-cone for polymer or multi-layered compound pipes.

Polymer Manifold Component Matrix

No.	Description	Article	Minimum Quantity
1.	Polymer inlet block - red	302036-001	1x per loop
2.	Polymer return block - blue	302037-001	1x per loop
3.	Threaded rod M8 x 1,000 mm	302045-001	4x per manifold
4.	M8 nuts *	only supplied in set	4x per manifold
5.	Universal wall holder *	299856-115	1x per manifold
6.	End plates *	only supplied in set	2x per manifold
7.	Connection blocks *	only supplied in set	2x per manifold
8.	Plug 1/2" male thread *	299856-114	4x per manifold
9.	Manual air vent 1/2" male thread *	299856-113	2x per manifold
10.	Fill and Drain valve G1/2" with hose connection 3/4" *	299856-111	2x per manifold
11.	Ball valve 1 1/2" union nut x 1" female thread *	299856-112	2x per manifold
	Identification plate with plastic holder set, 20 pcs *	299856-117	1x per manifold
12.	Temperature gauges *	only supplied in set	
	Ball valve 3/4" union nut x 3/4" male thread (euro-cone)	299856-110	
	Hexagon key SW5 (to operate 1 1/2" and 3/4" ball valves)	299856-116	1x per 299856-112
	* Available in Connection set 4	302433-001	

²⁾ Non-standard system in New Zealand. Please check with your local REHAU Sales Office for availability.



NEW
modular
manifold

1. FLOOR SYSTEMS

POLYMER MANIFOLD

Manifold inlet block - red

Single module with shut-off, manual regulation, O-ring seal and pressure tested.

Article	Description	Package Piece
302036-001	Manifold inlet block - red with O-ring seal	1

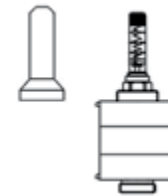
Suitable for
cooling
application



Manifold return block - blue

Single module with flowmeter, lead-sealable cap, O-ring seal and pressure tested.

Article	Description	Package Piece
302037-001	Manifold return block - blue with red indicator	1



Threaded rod

Threaded bar M8 x 1,000 mm galvanized for manifolds up to 17 circuits.

Article	Description	Package Piece
302045-001	Threaded rod - M8 (Dia) x 1,000 mm (L)	1



Connection set 4 for polymer manifold modules

Includes:

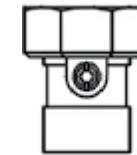
- 2x Connection blocks
- 2x End plates
- 4x Nuts M8
- 1x set Universal holder (without installation kit)
- 2x Manual air vents 1/2"
- 2x Plugs 1/2"
- 2x Fill and Drain valve G1/2" with hose connection 3/4"
- 2x Ball valves 1 1/2" union nut x 1" female thread
- 2x Temperature gauges
- 20x Identification plates



Article	Description	Package Piece
302433-001	Connection set 4 for polymer manifold modules	1

Ball valve with 3/4" union nut x 3/4" male thread (euro-cone)

To manually shut off individual manifold circuits.



Article	Description	Package Piece
299856-110	Ball valve with G3/4" union nut x G3/4" B male thread (euro-cone)	1

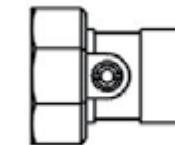
Fill and Drain valve with hose connection 3/4"



Article	Description	Package Piece
299856-111	Fill and Drain valve G1/2" B with hose connection 3/4"	1

Ball valve 1 1/2" union nut x 1" female thread

To shut off the service connection.



Article	Description	Package Piece
299856-112	Ball valve G1 1/2" union nut x G1" female thread	1

Manual air vent 1/2" male thread



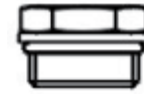
Article	Description	Package Piece
299856-113	Manual air vent G1/2" B male thread	1

1. FLOOR SYSTEMS

POLYMER MANIFOLD

Plug 1/2" male thread

Article	Description	Package Piece
299856-114	Plug G1/2" B male thread	2



Universal wall holder

Article	Description	Package Piece
299856-115	Universal wall holder - 103 to 115 mm (H) 1 set of 2x brackets	1



Hexagon key SW5

To open or close the ball valve 1 1/2" and 3/4" union nut, see page 49.

Article	Description	Package Piece
299856-116	Hexagon key SW5	1



Circuit identification plate set

20x printed tags (kitchen, bathroom, etc.).

Article	Description	Package Piece
299856-117	Circuit identification plate set - set of 20 pcs	1 / 10

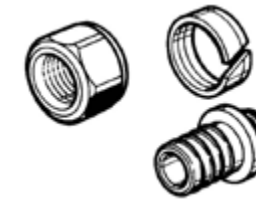


1. FLOOR SYSTEMS

MANIFOLD ACCESSORIES

Manifold unions for RAUTITAN pink

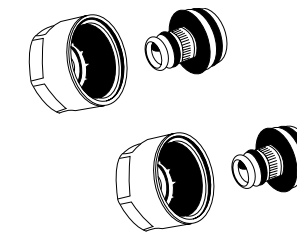
Brass manifold union to connect RAUTITAN pink pipe to manifold systems, include split brass ring and compression nut. Integral fitting/insert design provides positive clamping and sealing action with split compression ring.



Article	Description	Package Bag/Box
266352	Manifold unions for RAUTITAN pink - 16 x 2.2 mm	10 / 100
266362	Manifold unions for RAUTITAN pink - 20 x 2.8 mm	10 / 100

Manifold unions for RAUTITAN stabil

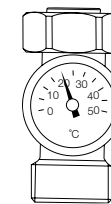
Brass manifold union to connect RAUTITAN stabil pipe to manifold systems, include insert with O-ring, polymer olive, polymer separator and compression nut.



Article	Description	Package Piece
266452	Manifold unions for RAUTITAN stabil - 16.2 x 2.6 mm	2 / 100
266462	Manifold unions for RAUTITAN stabil - 20 x 2.9 mm	2 / 100

In-line thermometer

3/4" euro-cone connection.



Article	Description	Package Piece
240001	In-line thermometer - 0° to 50°	1

Pressure gauge G1/4"



Article	Description	Package Piece
246879	Pressure gauge G1/4" - 0 bar to 10 bar	1

1. FLOOR SYSTEMS

WET SYSTEM

Tacker floor system²⁾

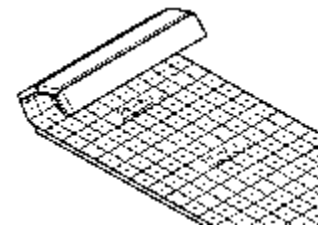
The Tacker Floor System consists of a pipe fixing Tacker sheet, edge insulation strip, staples, a staple gun and an expansion joint. Due to its robust features it is suitable for use with liquid screed.

Maximise
system
response

Tacker sheet

The printed laying grid allows for greater flexibility and accuracy during installation.

Article	Description	Package (m ²) Roll
210829	Tacker sheet - 25 mm (H) EPS SL-R - SL-grade (70 kpa compressive stress acc. AS 1366.3)	12 m (L) x 1 m (W) x 25 mm (H)



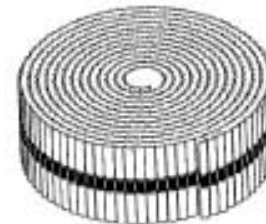
Note: Other grades and thicknesses are available on request.
* dependent on local conditions

Reduce downward
losses up to 50%*

Edge insulation strip

Made from closed cell PE foam, with a self-adhesive strip on back and foil flap, prevents moisture and water from the screed reaching the EPS floor insulation.

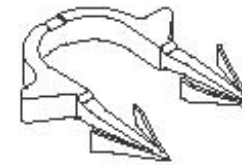
Article	Description	Package (m) Roll
264411	Edge insulation strip - 10 (W) x 180 (H) mm	25 / 100



²⁾ Non-standard system in New Zealand. Please contact your local REHAU Sales Office for availability.

Pipe fixing staple

Pipe fixing staples fasten the pipe firmly to the panel. Their optimum retaining force prevents the pipes from floating.



Article	Description	Package Piece
240221	Pipe fixing staple - for 16/17 mm pipe, grey	300
262373	Pipe fixing staple - for 20 mm pipe, black	300

Tacker staple gun MULTI

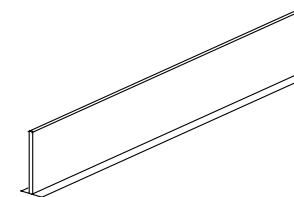
The staple gun allows quick and easy fastening of the pipe to the panel. Holds up to 90 staples.



Article	Description	Package Piece
227835	Tacker staple gun MULTI - for 16/17 + 20 mm staples	1

Expansion joint profile

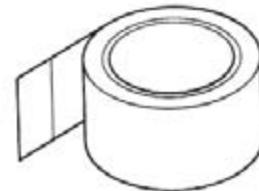
Expansion joint is utilised to provide a thermal break between adjoining heated screeds and/or controlled zones.



Article	Description	Package Metre
239243	Expansion joint profile - 100 (H) x 10 (W) x 1,200 (L) mm	1.2 / 24

Maximum
zone control

Tape for Floor System Tacker



REHAU Tacker sheets.

Article	Tape for Floor System	Package Piece
261949	- 50mm (W) x 66m (L)	1 / 6

1. FLOOR SYSTEMS

WET SYSTEM

RAUFIX system¹⁾

NO TOOLS

The RAUFIX system consists of RAUFIX rails, made from Polypropylene with a pipe lift of 5mm and the RAUFIX staples to ensure firm seating of the RAUFIX rail in the floor. Pipe can be installed in either single or double meander style.

RAUFIX rail

The RAUFIX rail is available without barbs, for pipe securing on concrete parts and also with barbs to ensure exact securing in insulation panels. Both rails feature connectors which are moulded into the RAUFIX rail enabling connection of the pipe bracket without tools. Hooks on the top retaining clips of the rail guarantee firm clipping of the pipe. Securing at the connector enables reliable and quick connection of the 1m RAUFIX rail. An installation spacing of 5cm and multiples is possible.

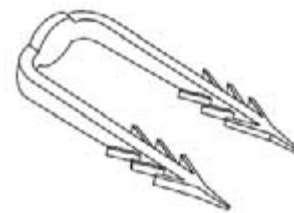
Article	Description	Package/ metre
240241	RAUFIX rail 16/17 (without barbs) -1,000mm (L) x 50mm (W)	10 / 900
244248	RAUFIX rail 16/17 (with barbs) -1,000mm (L) x 50mm (W)	10 / 900



RAUFIX staple

The specially formed barbs of the RAUFIX staple ensure firm seating of the RAUFIX rail in the floor.

Article	Description	Package/ piece
259268	RAUFIX staple 50mm (L) x 20mm (Tip Spacing)	500



¹⁾ Non-standard item in Australia and New Zealand. Please check with your local REHAU Sales Office for availability.

1. FLOOR SYSTEMS

DRY SYSTEM

Diffusion plate system



NO TOOLS

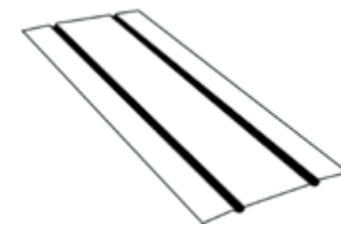


LOW HEIGHT

The Diffusion Plate system consists of aluminium heat transfer plates with pipe guide grooves for clip-in attachment of the pipe and integrated break points, which ensures rapid laying and saves installation time. This system is a perfect solution for new build and for refurbishments, due to its low weight suitable for suspended timber floors on joists. Suitable for pipe outer diameters 16mm.

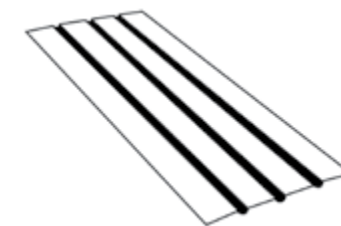
Suitable for new build & refurbishment

Double heat diffusion plate



Article	Description	Pipe Spacing	Package Piece
249075	Double heat diffusion plate - 1,000 x 390 mm	200 mm centre	1 / 10
249085 ¹⁾	Double heat diffusion plate - 500 x 390 mm	200 mm centre	1 / 10

Triple heat diffusion plate



Article	Description	Pipe Spacing	Package Piece
249095 ¹⁾	Triple heat diffusion plate - 1,000 x 390 mm	130 mm centre	1 / 10

¹⁾ Non-standard item in Australia and New Zealand. Please check with your local REHAU Sales Office for availability.

Lightweight

No tools required

Lateral heat distribution across entire area

Low height

1. FLOOR SYSTEMS

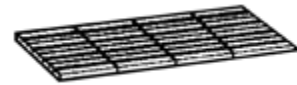
DRY SYSTEM

Floating floor system³⁾

The Floating Floor system is intended for use with dry screed elements. The panels are made from expanded polystyrene EPS and are CFC-free. They feature factory-laminated heat diffusion aluminium profiles on the top side for inserting RAUTITAN pink pipe and maximising the transverse heat distribution. Each panel includes interlocking edges for secure and quick installation. Suitable for pipe outer diameters 16mm.

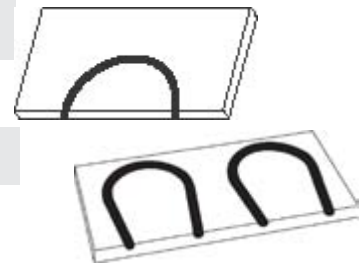
Straight panel (1,000 x 500 x 30 mm)

Article	Description Size /	Pipe Spacing	Package Piece
243994 ³⁾	Straight panel - 1,000 x 500 x 30 mm	125 mm centre	1 / 10
246004 ³⁾	Straight panel - 1,000 x 500 x 30 mm	250 mm centre	1 / 10



End panel (250 x 500 x 30 mm)

Article	Description	Pipe Spacing	Package Piece
246134 ³⁾	End panel - 250 x 500 x 30 mm	125 mm centre	1 / 20
246144 ³⁾	End panel - 250 x 500 x 30 mm	250 mm centre	1 / 20



Transition panel (250 x 375 x 30 mm)

Transition panels are used for redirection of the heating pipes near bordering walls.

Article	Description	Pipe Spacing	Package Piece
240501 ³⁾	Transition panel - 250 x 375 x 30 mm	125 - 250 mm centre	1 / 20

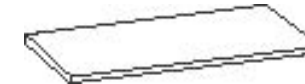


³⁾ Non-standard. Extended lead-time. Please contact your local REHAU Sales Office.

Fill panel (1,000 x 500 x 30 mm)



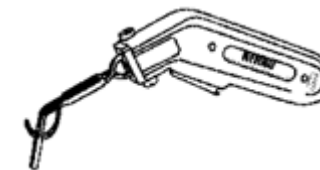
Fill panels are intended for the following areas: before the manifold; near projections, columns, ventilation outputs; empty areas with a non-squared ground plot.



Article	Description	Package Piece
249642 ³⁾	Fill panel (1,000 x 500 x 30 mm) - blank, no grooves	1 / 16

Groove cutter

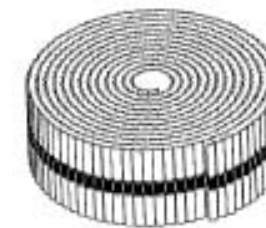
The groove cutter is used to cut individual pipe guides into the fill panels on construction site.



Article	Description	Package Piece
249682 ³⁾	Groove cutter - 230 V	1

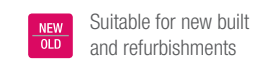
Edge insulation strip

Made from closed cell PE foam, with a self-adhesive strip on back and foil flap, prevents moisture and water from the screed reaching the EPS floor insulation.



Article	Description	Package (m) Roll
264411	Edge insulation strip - 10 (W) x 180 (H) mm	25 / 100

³⁾ Non-standard. Extended lead-time. Please contact your local REHAU Sales Office.



2. CONTROLS

ZONE CONTROL

RAUMATIC M - zone control system

The RAUMATIC M zone control system is a sophisticated electronic control system which has been specifically designed to give optimum and accurate control of underfloor heating systems.

Specifically designed
for underfloor heating

RAUMATIC M terminal plate

This universal terminal plate must be used with all REHAU RAUMATIC M room thermostats. For easier installation, all cable connections can be made prior to sliding on the thermostat body.

Article	Description	Package (Piece)
200296	RAUMATIC M terminal plate - backplate	1

Note: Terminal plate is not included with thermostats. Please order separately.



RAUMATIC M thermostat: Standard

The RAUMATIC M Standard is a room thermostat to control actuators using pulse width modulation. This type of control offers excellent and precise control response. Temperature can be selected in steps equivalent to 1/4 of a degree Celsius. Installation and connection is done using the pre-installed RAUMATIC M terminal plate to which the thermostat can be plugged at any time. Fixed set-back temperature of 4°C. Can control up to 5 actuators.

Article	Description	Package (Piece)
269114	RAUMATIC M thermostat: Standard - 24 V	1



RAUMATIC M thermostat: Comfort

As standard, additionally adjustable set-back temperature (e.g. at night) of 2°C to 6°C. Local override of operating mode dictated by master thermostat. Available settings:

- Slave mode (operates dictated by master)
- Permanent set-back
- Permanent day mode

Article	Description	Package (Piece)
241323	RAUMATIC M thermostat: Comfort - 24 V	1



RAUMATIC M thermostat: Comfort with external sensor

As comfort. Fixed set-back level for room temperature of 2°C. Additionally 3m long external floor temperature sensor. Two operating modes:

- Combi Mode: Control of room temperature and simultaneous independent control of minimum floor temperature
- Single Mode: Control of minimum floor temperature ONLY

Article	Description	Package (Piece)
299954	RAUMATIC M thermostat: Comfort with ext. sensor 24V, incl. 3m sensor and terminal back plate	1

Note: Minimum floor temperature can be set between 15°C and 28°C. In Combi Mode selected minimum floor temperature will be maintained even if pre-set room temperature is reached.

RAUMATIC M thermostat: Control



As comfort, additionally detachable and fully programmable time clock with up to 6 individual 'ON' / Set-back time settings. Can be used as a master for Standard or Comfort thermostats.

Article	Description	Package (Piece)
241333	RAUMATIC M thermostat: Control - 24 V	1

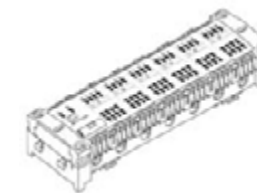
RAUMATIC actuator



The actuator allows individual control of circuits by opening and closing the corresponding isolating valve on the manifold. The actuator is controlled by room thermostat Standard / Comfort / Control.

Article	Description	Package Piece
241293	RAUMATIC actuator - 24 V, for brass manifolds	1
240131	RAUMATIC actuator - 24 V, for polymer manifolds	1

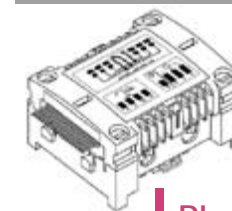
RAUMATIC distribution controller



The RAUMATIC distribution controller is the centre of the RAUMATIC M zone control system. All thermostats and actuator connections terminate here. Furthermore, it provides the operating voltage for the connected devices. The entire 24 V control system is marked for easy installation, enormous system security and high control comfort. It allows a precise and comfortable temperature control in different heating zones within a building.

Article	Description	Package Piece
249147	RAUMATIC distribution controller - 24 V, incl. Transformer 230 V/24 V	1

RAUMATIC pump module



The RAUMATIC pump module is a plug-in extension module for the distribution controller, and allows in conjunction with the distribution controller for the circulation pump or other electric consumers to be switched on and off. The plug-in/clamping connections minimise installation time.

Plug & play
installation

Article	Description	Package Piece
249167	RAUMATIC pump module - 24 V	1

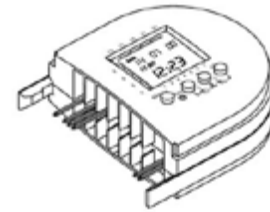
2. CONTROLS

FLOW TEMPERATURE CONTROL

RAUMATIC time control module

The RAUMATIC time control module is a plug-in extension module for the distribution controller. Together with this extension, the complete control system comprising distribution controller, actuators and thermostats becomes a comfortable, energy-saving individual room temperature control system with individually programmable heating times.

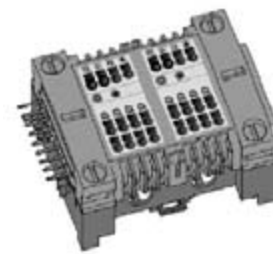
LCD display



Article	Description	Package Piece
249177	RAUMATIC time control module - 24 V	1

RAUMATIC M thermostat module

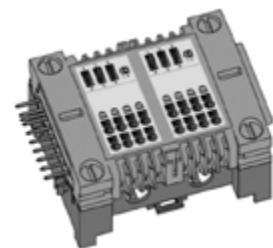
The RAUMATIC M thermostat module is a plug-in extension module for the distribution controller. It allows for extension of the control system by 2 additional room thermostats, with a maximum of 4 actuators each. The spring/clamp terminal connections minimise installation time.



Article	Description	Package Piece
244550	RAUMATIC M thermostat module - 24 V	1

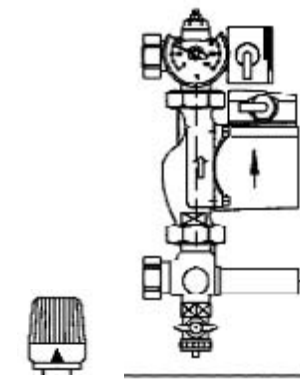
RAUMATIC actuator module

The RAUMATIC actuator module is a plug-in extension module for the distribution controller. It allows for extension of an existing control system by a maximum of 8 actuators. The actuators are assigned to 1 or 2 room thermostats already connected to the distribution controller. This allows the control of up to 12 actuators with only 1 thermostat. The spring/clamp terminal connections minimise installation time.



Article	Description	Package Piece
244560	RAUMATIC actuator module - 24 V	1

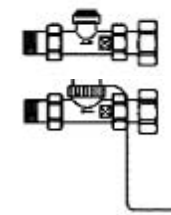
Fixed flow temperature compact mixer unit (for brass manifolds)



The compact mixer unit is used to supply a preselected set temperature to the REHAU brass flow meter manifold. Components are supplied ready to fit REHAU flow meter manifolds. All joints are flat sealed. It can be assembled to be connected to the supply tubings on either side and is suitable for outputs up to 18 KW.

Article	Description	Package Piece
237092	Fixed flow temperature compact mixer unit (for brass manifolds) - without valves	1

Fixed flow temperature valve set



Valve set for fixed flow temperature compact mixer unit. Output up to 12 KW - 18 KW.

Article	Description	Package Piece
245130	Fixed flow temperature valve set - 3/4"	1

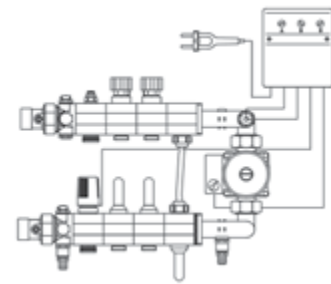
2. CONTROLS

FLOW TEMPERATURE CONTROL

Universal flow temperature control (for polymer manifolds)²⁾

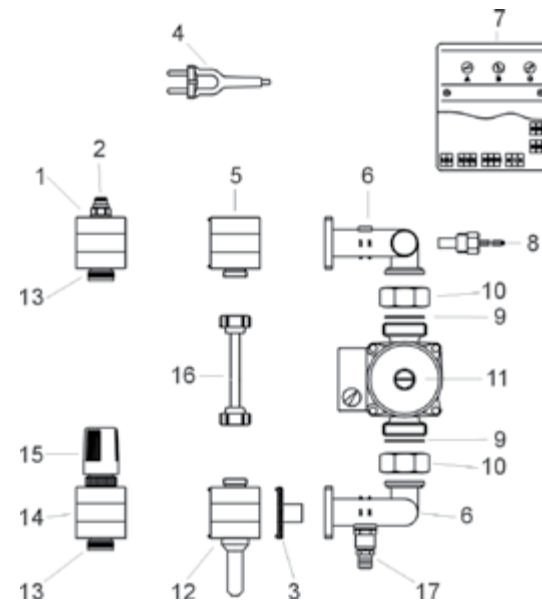
The Universal Flow Temperature Control is a modern digital controller which combines the simple operation known from normal analogue devices with the precision and wide-ranging functions of a digital device. It can work in 3 different modes:

1. Outside temperature controlled flow temperature with automatic limitation of the maximum flow temperature (outdoor sensor required, see page 62).
2. Constant flow temperature.
3. Boiler controlled flow temperature.



New!
3 operating modes available

No.	Components	Quantity included
1.	Throttle valve.....	1
2.	Adjust spindle.....	1
3.	Separating plate with return valve.....	1
4.	Mains plug 230 V~	1
5.	Inlet flow segment	1
6.	Connecting arm for pump	2
7.	Electronic control.....	1
8.	Immersion sleeve with flow temperature sensor and safety temperature limiter	1
9.	Flat packing.....	2
10.	Union nut	2
11.	Pump.....	1
12.	Return flow segment DFM 177	1
13.	Locking cap 3/4"	2
14.	Control valve	1
15.	Actuator 230 V~.....	1
16.	Bypass pipe 16 x 2 MSV-pipe with connections.....	1
17.	Filling and drain valve.....	1



Article	Description	Package Piece
302069	Universal flow temperature control (for polymer manifolds) - 230 V	1

²⁾ Non-standard item in New Zealand. Please check with your local REHAU Sales Office for availability.

Outdoor sensor (for polymer manifolds)²⁾

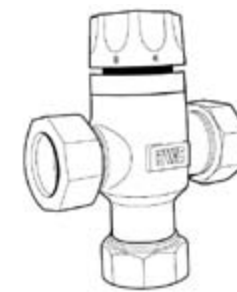


The outdoor sensor is required to operate the Universal Flow Temperature Control in variable flow temperature mode.

Article	Description	Package Piece
210972	Outdoor sensor (for polymer manifolds) - 230 V	1

NEW
Weather Compensation

3 port mixing valve



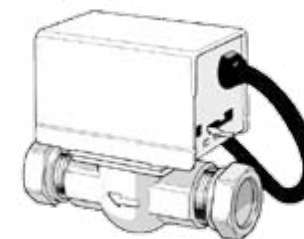
Thermostatic blending valve with compression connections. Wax capsule technology ensures stable mixed water temperature. Suitable for blending the flow and return to achieve a stable system temperature in underfloor heating systems up to 200 m² / 300 m².

Article	Description	Package Piece
298618	3 port mixing valve - 22 mm (20 KW / 200 m ²)	1
298608	3 port mixing valve - 28 mm (30 KW / 300 m ²)	1

Optimised for underfloor heating system

High flow rates

Motorised zone valve (230 V)



Accessory for fixed and universal flow temperature units. It allows for the integration of the UFH system with the domestic hot water radiator system.

Article	Description	Package Piece
230462	Motorised zone valve (230 V) - 22 mm	1
230472	Motorised zone valve (230 V) - 28 mm	1

²⁾ Non-standard item in New Zealand. Please check with your local REHAU Sales Office for availability.

PX Polymer PPSU material

MX DZR brass material

U Permanent leak proof joint

Concealed application All fittings suitable for concealed installation

3. ACCESSORIES CONDUIT AND FITTINGS

RAUTITAN conduit

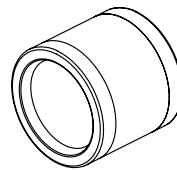
Article	Description	Package Coil (m)
137140-050 ¹⁾	RAUTITAN conduit - 16	50
137150-050 ¹⁾	RAUTITAN conduit - 20	50
137160-025	RAUTITAN conduit - 25	25



RAUTITAN PX sleeve - polymer

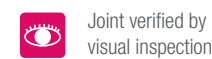


Article	Description	Package Piece
160001	RAUTITAN PX sleeve - polymer, 16	100
160002	RAUTITAN PX sleeve - polymer, 20	100
160003	RAUTITAN PX sleeve - polymer, 25	100
160004	RAUTITAN PX sleeve - polymer, 32	50
160005	RAUTITAN PX sleeve - polymer, 40	25

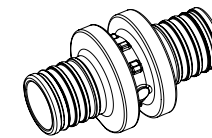


Note: If used with screed (wet system), protect against corrosion.

¹⁾ Non-standard item in Australia and New Zealand. Please check with your local REHAU Sales Office for availability.

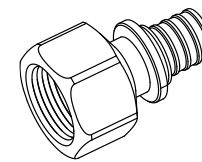


RAUTITAN PX no. 1 straight coupling - polymer



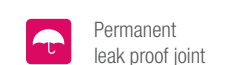
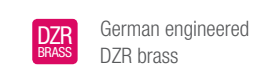
Article	Description	Package Piece/Box
160011	RAUTITAN PX no. 1 straight coupling - polymer, 16	10 / 50
160012	RAUTITAN PX no. 1 straight coupling - polymer, 20	10 / 50
160013	RAUTITAN PX no. 1 straight coupling - polymer, 25	10 / 50
160014	RAUTITAN PX no. 1 straight coupling - polymer, 32	10 / 30
160015	RAUTITAN PX no. 1 straight coupling - polymer, 40	4

RAUTITAN MX no. 2 straight connector - female thread - brass



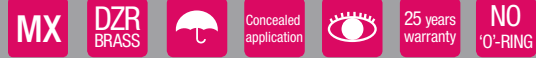
Article	Description	Package Piece
139281 ¹⁾	RAUTITAN MX no. 2 straight connector - 25 - Rp $\frac{1}{2}$ " FI female thread, brass	10 / 50
259535	RAUTITAN MX no. 2 straight connector - 25 - Rp $\frac{3}{4}$ " FI female thread, brass	10 / 50
139101	RAUTITAN MX no. 2 straight connector - 32 - Rp $\frac{3}{4}$ " FI female thread, brass	10 / 30
139091	RAUTITAN MX no. 2 straight connector - 32 - Rp1" FI female thread, brass	10 / 30

¹⁾ Non-standard item in Australia and New Zealand. Please check with your local REHAU Sales Office for availability.

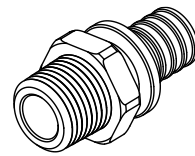


3. ACCESSORIES CONDUIT AND FITTINGS

RAUTITAN MX no. 3 straight connector - male thread - brass



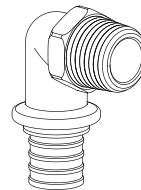
Article	Description	Package Piece
139181	RAUTITAN MX no. 3 straight connector - 25 - R1½" MI male thread, brass	10 / 50
259505	RAUTITAN MX no. 3 straight connector - 25 - R¾" MI male thread, brass	10 / 50
257336	RAUTITAN MX no. 3 straight connector - 25 - R1" MI male thread, brass	10 / 50
139081	RAUTITAN MX no. 3 straight connector - 32 - R¾" MI male thread, brass	10 / 30
139051	RAUTITAN MX no. 3 straight connector - 32 - R1" MI male thread, brass	10 / 30



RAUTITAN MX no. 13 elbow - male thread - brass



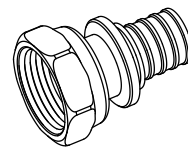
Article	Description	Package Piece
139511	RAUTITAN MX no. 13 elbow 25 - R¾" MI male thread, brass	10 / 50
137423	RAUTITAN MX no. 13 elbow 32 - R¾" MI male thread, brass	3 / 30
137433	RAUTITAN MX no. 13 elbow 32 - R1" MI male thread, brass	3 / 30



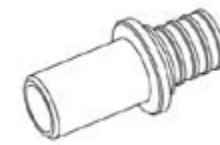
RAUTITAN MX no. 62 tap connector with gasket - brass



Article	Description	Package Piece
139922	RAUTITAN MX no. 62 tap connector with gasket - brass 25 - G1" FI	10 / 50
139932	RAUTITAN MX no. 62 tap connector with gasket - brass 32 - G1" FI	3 / 30



RAUTITAN RX - Connection Barb - gunmetal



Article	Description	Package Piece
137226	Connection Barb 25 x 3.5-L22 RX	2 / 30
287196	Connection Barb 25 x 3.5-L28 RX	2 / 30

Polymer profile bend brackets 90° x 5D



Article	Description	Package Piece
297891	Polymer profile bent brackets 90° x 5D - 16	10 / 50
297892	Polymer profile bent brackets 90° x 5D - 20	10 / 50
299894-098	Polymer profile bent brackets 90° x 5D - 25	10 / 50

Pipe unwinder¹⁾



Galvanised steel pipe unwinder suitable for RAUTITAN pipe, RAUTITAN stabil and RAUTHERM S pipes in nominal width up to 20mm and pipe coils up to 600m.

Article	Description	Package Piece
286151	Pipe unwinder	1

¹⁾ Non-standard item in Australia and New Zealand. Please check with your local REHAU Sales Office for availability.

4. ORDER CHECKLIST

Article	Product	Quantity	Price	Article	Product	Quantity	Price
FLOOR SYSTEMS - PIPE				Hexagon key SW5			
RAUTITAN pink pipe				299856-116 -			
136042-006	16 x 2.2 straight			Circuit identification plate set			
136042-200	16 x 2.2 coil			299856-117 set of 20 pcs			
136052-006	20 x 2.8 straight			FLOOR SYSTEMS - MANIFOLD ACCESSORIES			
136052-120	20 x 2.8 coil			Manifold unions for RAUTITAN pink			
136062-006	25 x 3.5 straight			266352	16 x 2.2 mm		
136062-050	25 x 3.5 coil			266362	20 x 2.8 mm		
136072-006	32 x 4.4 straight			Manifold unions for RAUTITAN stabil			
136072-050	32 x 4.4 coil			266452	16.2 x 2.6 mm		
136082-006	40 x 5.5 straight			266462	20 x 2.9 mm		
RAUTITAN stabil pipe				In-line thermometer			
130071-005	16.2 x 2.6 straight			240001	0° - 50°		
130121-100	16.2 x 2.6 coil			Pressure gauge G1/4"			
130081-005	20 x 2.9 straight			246879	0 bar - 10 bar		
130131-100	20 x 2.9 coil			FLOOR SYSTEMS - WET SYSTEM			
130141-050	25 x 3.7 coil			Tacker sheet			
130091-005	25 x 3.7 straight			210829	25 mm EPS SL-R		
130101-005	32 x 4.7 straight			Edge insulation strip			
130111-005	40 x 6.0 straight			264411	10 x 180 mm		
FLOOR SYSTEMS - BRASS MANIFOLD				Pipe fixing staple			
Brass flow meter manifold system				240221	for 16 mm pipe, grey		
240021	HKV - D 2 (2 port)			262373	for 20 mm pipe, black		
240031	HKV - D 3 (3 port)			Tacker staple gun MULTI			
240041	HKV - D 4 (4 port)			227835	for 16 + 20 staples		
240051	HKV - D 5 (5 port)			Expansion joint profile			
240061	HKV - D 6 (6 port)			239243	100 x 10 x 1,200 mm		
240071	HKV - D 7 (7 port)			RAUFIX rail 16/17			
240081	HKV - D 8 (8 port)			240241	1000 x 50 mm		
240091	HKV - D 9 (9 port)			RAUFIX rail 16/17 with barbs			
240101	HKV - D 10 (10 port)			244248	1000 x 50 mm		
240111	HKV - D 11 (11 port)			RAUFIX staple			
240121	HKV - D 12 (12 port)			259268	50 x 20 mm		
FLOOR SYSTEMS - POLYMER MANIFOLD				FLOOR SYSTEMS - DRY SYSTEM			
Manifold inlet block - red				Double heat diffusion plate			
302036	red with O-ring seal			249075	1,000 x 390 mm, 200 mm centre		
Manifold return block - blue				249085	500 x 390 mm, 200 mm centre		
302037	blue with red indicator			Triple heat diffusion plate			
Threaded rod				249095	1,000 x 390 mm, 130 mm centre		
302045	M8 x 1,000 mm			Straight panel (1,000 x 500 x 30 mm)			
Connection set 4 for polymer manifold modules				243994	125 mm centre		
302433	-			246004	250 mm centre		
Ball valve with 3/4" union nut x 3/4" male thread (euro-cone)				End panel (250 x 500 x 30 mm)			
299856-110	G3/4" x G3/4" B			246134	125 mm centre		
Fill and drain valve with hose connection 3/4"				246144	250 mm centre		
299856-111	G1/2" B x 3/4"			Transition panel (250 x 375 x 30 mm)			
Ball valve 1 1/2" union nut x 1" female thread				240501	125 - 250 mm centre		
299856-112	G1 1/2" x G1"			Universal wall holder			
Manual air vent 1/2" male thread				299856-115 103 - 115 mm, 1 set of 2x brackets			
299856-113	G1/2" B						
Plug 1/2" male thread							
299856-114	G1/2" B						

Article	Product	Quantity	Price	Article	Product	Quantity	Price
Fill panel (1,000 x 500 x 30 mm)				ACCESSORIES - CONDUIT			
249642	blank, no grooves			RAUTITAN conduit			
Groove cutter				137140	16		
249682	230 V			137150	20		
Edge insulation strip				137160	25		
264411	10 x 180 mm			ACCESSORIES - FITTINGS			
Tape				RAUTITAN PX sleeve - polymer			
261945	50 x 66 mm			160001	16		
CONTROLS - ZONE CONTROL				160002	20		
RAUMATIC M terminal plate				160003	25		
200296	backplate			160004	32		
RAUMATIC M thermostat: Standard				160005	40		
269114	24 V			RAUTITAN PX no. 1 straight coupling - polymer			
RAUMATIC M thermostat: Comfort				160011	16		
241323	24 V			160012	20		
RAUMATIC M thermostat: Comfort (with ext. sensor)				160013	25		
299954	24 V			160014	32		
RAUMATIC M thermostat: Control				160015	40		
241333	24 V			RAUTITAN MX no. 2 straight connector - female thread - brass			
RAUMATIC actuator				139281	25 - Rp1/2" FI		
241293	24 V - for brass manifolds			259535	25 - Rp3/4" FI		
240131	24 V - for polymer manifolds			139101	32 - Rp3/4" FI		
RAUMATIC distributor controller				139091	32 - Rp1" FI		
249147	24 V, incl. Transformer 230 V/24 V			RAUTITAN MX no. 3 straight connector - male thread - brass			
RAUMATIC pump module				139181	25 - R1/2" MI		
249167	24 V			259505	25 - R3/4" MI		
RAUMATIC time control module				257336	25 - R1" MI		
249177	24 V			139081	32 - R3/4" MI		
RAUMATIC M thermostat module				139051	32 - R1" MI		
244550	24 V			RAUTITAN MX no. 13 elbow - male thread - brass			
RAUMATIC actuator module				139511	25 - R3/4" MI		
244560	24 V			137423	32 - R3/4" MI		
CONTROLS - FLOW TEMPERATURE CONTROL				137433	32 - R1" MI		
Fixed flow temperature compact mixer unit (for brass manifolds)				RAUTITAN MX no. 62 tap connector with gasket - brass			
237092	without valves			139922	25 - G1" FI		
Fixed flow temperature valve set				139932	32 - G1" FI		
245130	3/4"			RAUTITAN RX - Connection barb - gunmetal			
Universal flow temperature control (for polymer manifolds)				137226	25 x 3.5 - L22		
302069	230 V			287196	25 x 3.5 - L28		
Outdoor sensor (for polymer manifolds)				Polymer profile bent brackets 90° x 5D			
210972	230 V			297891	16		
3 port mixing valve				297892	20		
298618	22 mm (20 KW / 200m²)			299894	25		
298608	28 mm (30 KW / 300m²)			Pipe unwinder			
Motorised zone valve (230 V)				286151			
230462	22 mm						
230472	28 mm						



RAUTOOL AND ACCESSORIES

PRODUCT LIST

RAUTOOL AND ACCESSORIES



REHAU's comprehensive range of tools and accessories allows quick and reliable installation that suits all kinds of site conditions.

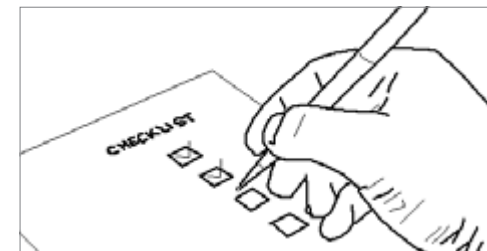
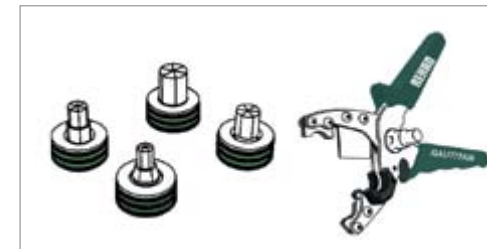
Choose the different operational tools with all necessary accessories from the wide range of RAUTOOL kits available.

Complete with the right tools and accessories that are available for all kinds of site conditions, RAUTITAN system installation is one of the most efficient and economical plumbing installations around.

DURABLE, RELIABLE AND EASY TO INSTALL!

Plumbers can rely on REHAU technology as a solution for all their piping needs. Pipe installation has become faster, easier and safer.

TABLE OF CONTENTS



	Page
1. RAUTOOL	78
2. ACCESSORIES	80
3. ORDER CHECKLIST	84

In locations with known problems of fitting corrosion or where the water is or is suspected to be highly corrosive (e.g. in volcanic areas, in installations using bore/well water or in applications using water with high sulphur content, etc), there is a danger that fittings corrode quickly. The suitability and warranty coverage of the RAUTITAN pipe system in such installations require a prior independent consultation with REHAU. In some cases, the accessible or nearby water quality may also void the REHAU warranty unless appropriate water treatment is provided.

1. RAUTOOL

RAUTOOL M1 / Gas / Heating / Water

Article	Description	Package Set
137764	RAUTOOL M1 kit, manual	1

Content of RAUTOOL M1 kit

137304	Compression tool inclusive of holding pins set
137744	Compression jaws, manual: 16 / 20
139592	Expander tool RO inclusive of cleaning brush and lubricant gel
204219	Dual Expander head 16 x 2.2 RO / 20 x 2.8 RO
247474	Pipe cutter 16-20 stabil
138062	Pipe cutter 40 stabil
137415	Transport case
850.625	Operating instructions

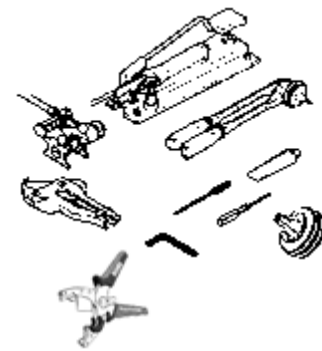


RAUTOOL H2 / Gas / Heating / Water

Article	Description	Package Set
202484	RAUTOOL H2 kit, mechanical hydraulic	1

Content of RAUTOOL H2 kit

-	Compression tool inclusive of holding pins set, foot pump HFP 12 and hydraulic hose 3.5 m
139361	Compression jaws, hydraulic: 16 / 20
139592	Expander tool RO inclusive of cleaning brush and lubricant gel
204219	Dual Expander head 16 x 2.2 RO / 20 x 2.8 RO
247474	Pipe cutter 16-20 stabil
138062	Pipe cutter 40 stabil
297500	Transport case
850.646	Operating instructions



RAUTOOL A3 / Gas / Heating / Water

Article	Description	Package Set
200000	RAUTOOL A3 kit, battery operated	1

Content of RAUTOOL A3 kit

-	Compression tool inclusive of holding pins set, Li-ion battery (1 pcs) and battery charger (1 pc)
139361	Compression jaws, hydraulic: 16 / 20
139592	Expander tool RO inclusive of cleaning brush and lubricant gel
204219	Dual Expander head 16 x 2.2 RO / 20 x 2.8 RO
247474	Pipe cutter 16-20 stabil
138062	Pipe cutter 40 stabil
-	Transport case
856.613	Operating instructions



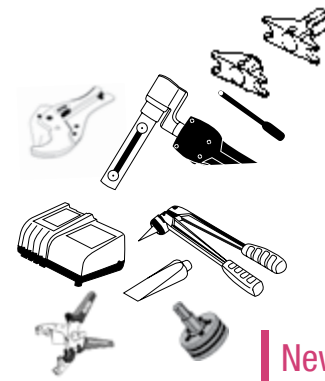
New!

RAUTOOL A-Light2 / Gas / Heating / Water

Article	Description	Package Set
203915	RAUTOOL A-Light2 kit, battery operated	1

Content of RAUTOOL A-Light2 kit

-	Basic tool inclusive of holding pins set, Li-ion battery (1 pc) and battery charger (1 pc)
139361	Compression Jaws, hydraulic: 16/20
139592	Expander tool RO with cleaning brush and lubricant gel
204219	Dual Expander head 16 x 2.2 RO / 20 x 2.8 RO
247474	Pipe cutter 16-20 stabil
138062	Pipe cutter 40 stabil
-	Transport case
-	Guarantee card
856.609	Operating instructions



New!

RAUTOOL E3 / Gas / Heating / Water

Article	Description	Package Set
203917	RAUTOOL E3 kit, electro hydraulic	1

Content of RAUTOOL E3 kit

-	Compression tool inclusive of holding pins set, electric pump HMP 1 and hydraulic hose 4 m, Li-ion battery (1pc) and battery charger (1pc)
139361	Compression jaws, hydraulic: 16 / 20
139592	Expander tool RO inclusive of cleaning brush and lubricant gel
204219	Dual Expander head 16 x 2.2 RO / 20 x 2.8 RO
247474	Pipe cutter 16-20 stabil
138062	Pipe cutter 40 stabil
248441	Transport case
850.651	Operating instructions



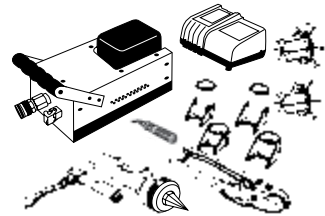
New!

RAUTOOL G2 / Gas / Heating / Water

Article	Description	Package Set
203599	RAUTOOL G2 kit, electro hydraulic	1

Content of RAUTOOL G2 kit

-	Compression tool inclusive of holding pins set, electric pump HMP 1 and hydraulic hose 4 m, Li-ion battery (1pc) and battery charger (1pc)
137624	Compression jaws, G1: 50
137634	Compression jaws, G1: 63
139891	Expander head G1: 50 x 6.9
139901	Expander head G1: 63 x 8.6
138220	Deburrer
139092	Pipe cutter 63
137724	Transport case
856.695	Operating instructions



New!

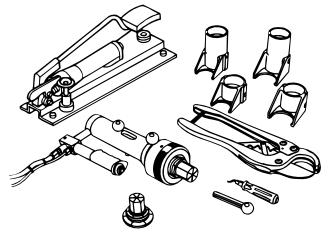
1) Not suitable for RAUTITAN stabil

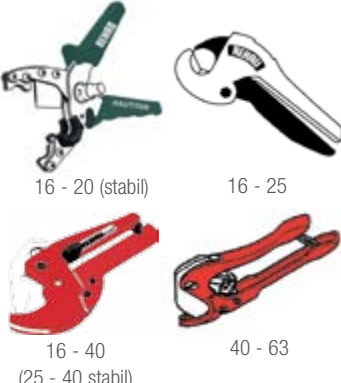


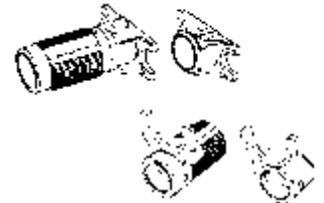
Compression tools are suitable for water, gas and heating applications

1. RAUTOOL - COMPRESSION TOOL

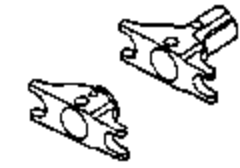
2. ACCESSORIES


RAUTOOL HG1			✓ Gas ✓ Heating ✓ Water
Article	Description	Package Set	
137425	RAUTOOL HG1 kit, mechanical hydraulic	1	
Content of RAUTOOL HG1 kit			
856.690	Operating instructions		
137724	Transport case		
139092	Pipe cutter 63		
137904	Cylinder 50 - 110 with handle		
138132	HG1 foot pump: HFP 14/22		
139382	Hydraulic hose 4 m		
137624	Compression jaws, G1: 50		
137634	Compression jaws, G1: 63		
137914	Expander set inclusive of locking nut and holding pins set		
139891	Expander head G1: 50 x 6.9 R0		
139901	Expander head G1: 63 x 8.6 R0		
138990	Deburrer		


Pipe cutter			✓ Gas ✓ Heating ✓ Water
Article	Size	Package Piece	
247474	16 - 20 (stabil)	1	
247464	Spare blade for 16 - 20 (stabil) [article no. 247474-001]	1	
137495 1)	16 - 25	1	
138062	16 - 40 (25 - 40 stabil)	1	
138072	Spare blade for 16 - 40 (25 - 40 stabil) [article no. 138062]		
139092	40 - 63	1	
137435	Spare blade for 40-63 [article no. 139092]	1	


Compression jaws for RAUTOOL M1			✓ Gas ✓ Heating ✓ Water
Article	Size	Package Piece/Box	
137744	16 / 20	1	
137364	25 / 32	1	
201798	40	1	


2. ACCESSORIES

Compression jaws for RAUTOOL H2, A3, A-Light2, E3			✓ Gas ✓ Heating ✓ Water
Article	Size	Package Piece/Box	
139361	16 / 20	1	
257259	25 / 32	1	
201801	40	1	

Compression jaws for RAUTOOL G2, HG1			✓ Gas ✓ Heating ✓ Water
Article	Size	Package Piece	
201802	40	1	
137624	50	1	
137634	63	1	

Supplementary kit for RAUTOOL M1			✓ Gas ✓ Heating ✓ Water
Article	Size	Package Set	
201804	40	1	
Content of Supplementary kit for RAUTOOL M1			
201798	Compression jaws, manual: 40		
137344 1)	Expander bit, 40 x 5.5		

Supplementary kit for RAUTOOL H2, A3, A-Light2, E3			✓ Gas ✓ Heating ✓ Water
Article	Size	Package Set	
201803	40	1	
Content of Supplementary kit for RAUTOOL H2, A3, E3, A-Light2			
201801	Compression jaws, hydraulic: 40		
244611 1)	Expander bit, 40 x 5.5		

Expander tool (to suit expander heads 16 - 32)			✓ Gas ✓ Heating ✓ Water
Article	Description	Package Piece	
139592	Expander tool R0 inclusive of cleaning brush and lubricant gel	1	

1) Not suitable for RAUTITAN stabil



Compression tools are suitable for water, gas and heating applications

2. ACCESSORIES

Expander head



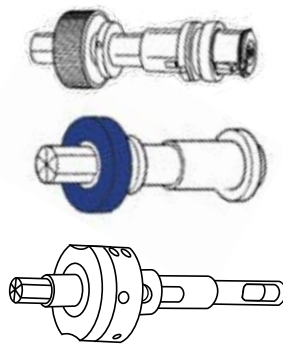
Article	Size Piece	Package
204219	Dual 16 x 2.2 / 20 x 2.8 RO (NEW)	1
139602 ¹⁾	16 x 2.2 RO	1
139612 ¹⁾	20 x 2.8 RO	1
139622 ¹⁾	25 x 3.5 RO	1
139632 ¹⁾	32 x 4.4 RO	1
244571	16.2 x 2.6 RO stabil	1
244581	20 x 2.9 RO stabil	1
244591	25 x 3.7 RO stabil	1
244601	32 x 4.7 RO stabil	1



Expander bit



Article	Size	Package Piece/Box
137344 ¹⁾	40 x 5.5 (M1)	1
244611 ¹⁾	40 x 5.5 (H2, A3, E3, A-Light2)	1
248401	Dual 16 x 2.2 / 20 x 2.8 (A3, E3, A-Light2)	1



Expander bit (stabil)



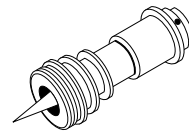
Article	Size	Package Piece/Box
247644	40 x 6.0 RO stabil	1



Universal expander



Article	Size	Package Piece/Box
247504	25 / 32 RO	1



¹⁾ Not suitable for RAUTITAN stabil

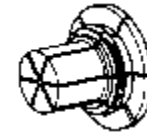


Compression tools are suitable for water, gas and heating applications

Expander head for RAUTOOL G2, HG1



Article	Size	Package Piece
139881 ¹⁾	G2: 40 x 5.5	1
139891	G2: 50 x 6.9	1
139901	G2: 63 x 8.6	1



Supplementary expander kit (stabil)



Article	Size	Package Set
247524	16 - 32 stabil	1



Content of supplementary expander kit (stabil)

244571 Expander head 16.2 x 2.6 RO stabil
 244581 Expander head 20 x 2.9 RO stabil
 244591 Expander head 25 x 3.7 RO stabil
 244601 Expander head 32 x 4.7 RO stabil
 247474 Pipe cutter 16 - 20 stabil



REHAU SERVICES
ONE-STOP SUPPLIER OF QUALITY SOLUTIONS

REHAU SERVICES

REHAU AUTHORISED INSTALLER NETWORK (RAIN)

Not only is the quality and design of REHAU piping systems exceptional, the company's commitment to the people who sell and install them is just as outstanding. Consequently, REHAU plumbers worldwide enjoy an array of benefits second to none.



Stay on top of your trade

REHAU is much more than your supplier of piping and fittings. We aim to provide a standard of after-sales service to match the world-class quality of our products.

To assist you and your team to utilise the full capabilities of our products and services we have developed the REHAU Authorised Installer Network (RAIN). Our vision is to grow and support our customers as they mature across the marketplace. The RAIN network is an exclusive group of installation experts who are trained and authorised by REHAU to install the RAUTITAN product range.



RAIN MEMBER BENEFITS

In addition to comprehensive training and technical support, RAIN members will enjoy:

- Special project design assistance
- Project assistants with plumbing/gas regulators
- Advanced training seminars
- Priority access to sales promotions
- Regular product updates and information
- Invitations to special RAIN promotional events
- Joint advertising and marketing opportunities with REHAU
- Regulatory updates
- And much more

To register with RAIN, contact your local REHAU sales office or visit www.rehau.com.

PROJECT DESIGN SUPPORT



Whether your project is a family home or a 40-storey high rise development, REHAU is your design partner. Our central design office and experienced engineers can provide advice regarding energy sources, hydraulic consideration, pipe layout, floor structure and much more.

Submit your project details (description or CAD drawing) to our central design office. We can provide a detailed design to take your project from concept to installation and commissioning.

Email: designassist.anz@rehau.com

YOUR PERFECT LONG-TERM PARTNER

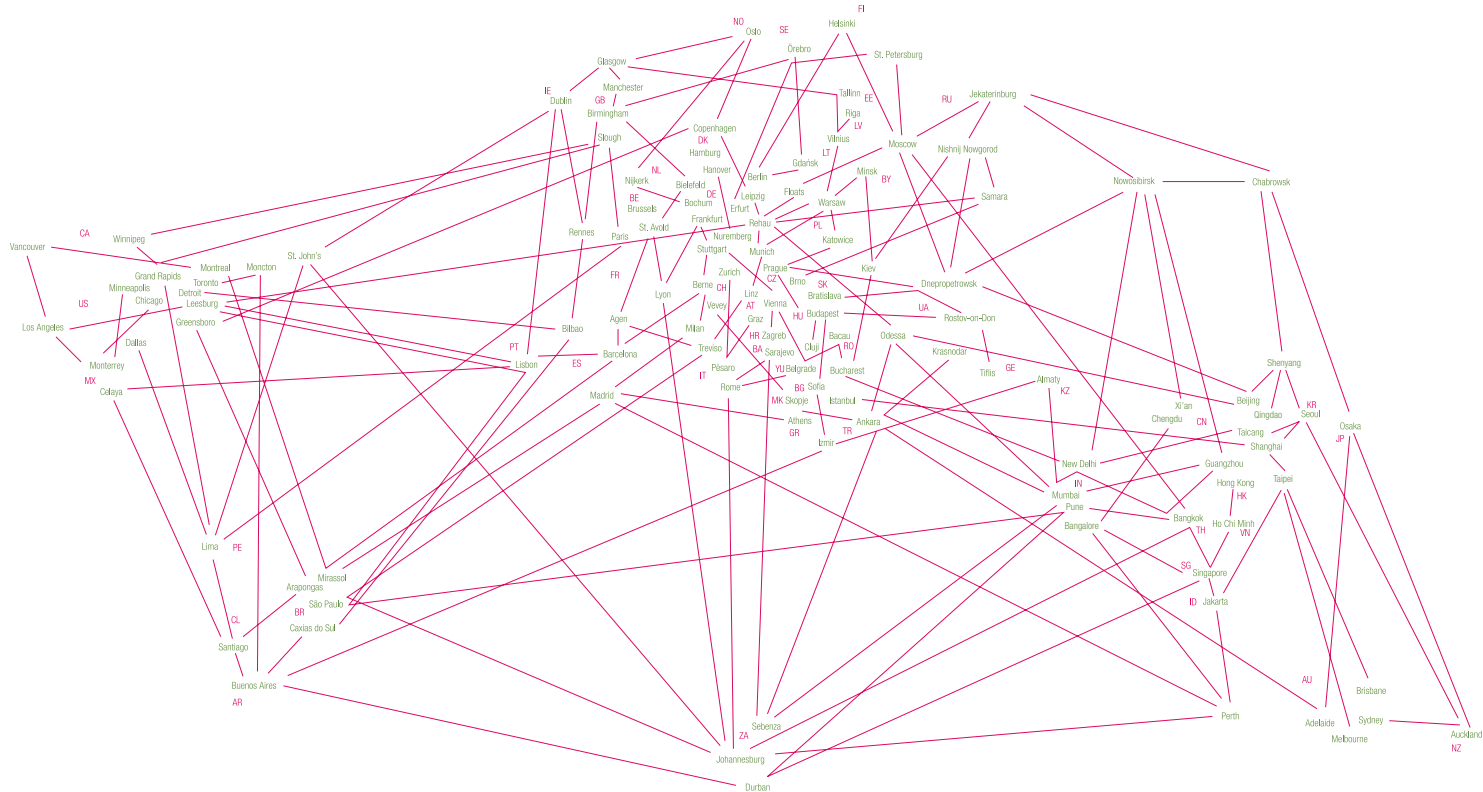


We offer you the strength of a world-leading brand of polymer-based solutions. One that is backed by **outstanding innovations, the most modern manufacturing technologies and flexible logistics**. You'll find in REHAU a future-oriented and reliable partner with a width and depth of expertise second to none.

Support & service where it counts

NOTES

Lined area for notes, consisting of 25 horizontal gray lines.



Our verbal and written advice relating to technical applications is based on experience and is to the best of our knowledge correct but is given without obligation. The use of REHAU products in conditions that are beyond our control or for applications other than those specified releases us from any obligation in regard to claims made in respect of the products. We recommend that the suitability of any REHAU product for the intended application should be checked. Utilization and processing of our products are beyond our control and are therefore exclusively your responsibility. In the event that a liability is nevertheless considered, any compensation will be limited to the value of the goods supplied by us and used by you. Our warranty assumes consistent quality of our products in accordance with our specification and in accordance with our general conditions of sale. This document is protected by copyright. All rights based on this are reserved. No part of this publication may be translated, reproduced or transmitted in any form or by any similar means, electronic or mechanical, photocopying, recording or otherwise, or stored in a data retrieval system.

REHAU Branches in Asia/Australia

Regional Office for Asia/Australia

SINGAPORE

1 King George's Avenue, REHAU Building, Singapore 208557 Tel: +65 6392-6006 Fax: +65 6392-6116

AUSTRALIA National Customer Centre Tel: 1300 768 033 Adelaide Tel: +61 8 8100-3500 Brisbane Tel: +61 7 5527-1833 Melbourne Tel: +61 3 9586-3100 Perth Tel: +61 8 9456-0700 Sydney Tel: +61 2 8741-4500 **GREATER CHINA** Beijing Tel: +86 10 6428-2956 Chengdu Tel: +86 28 8628-3218 Guangzhou Tel: +86 20 8776-0343 / 3646 Hong Kong Tel: +852 2898-7080 Taicang Tel: +86 512 5337-2815 Taipei Tel: +886 2 8780-3899 **INDIA** Bangalore Tel: +91 93 4295-2748 / 4104-6605 / 7901-6295 Mumbai Tel: +91 22 6792-2929 / 2930 New Delhi Tel: +91 11 4504-4700 ~ 4710 **INDONESIA** Jakarta Tel: +62 21 5275-177 **JAPAN** Tokyo Tel: +81 3 5796-2102 **KOREA** Seoul Tel: +82 2 5011-656 **MALAYSIA** Kuala Lumpur Tel: +6 16 7080-384 **NEW ZEALAND** Auckland Tel: +64 9 2722-264 **THAILAND** Bangkok Tel: +66 2 7443-155 **VIETNAM** Ho Chi Minh City Tel: +84 8 6255-6730