

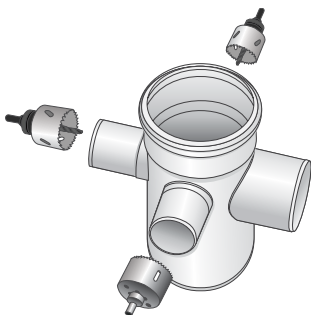
RAUPIANO PLUS

FLOOR WASTE GULLY - INSTALLATION

RAUPIANO PLUS Floor waste gully includes:

- 3-way riser (DN 110 floor inlet, 3 x DN50 inlets, DN75 outlet).
- Removable insert that creates a water sealing column for the “trap”.
- The same push-fit joining method applies for all the inlets and outlet.

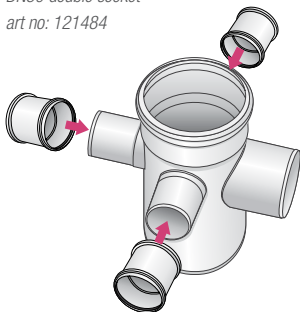
**1. Drill hole for required inlets
using 45mm hole saw**



Floor waste gully art. no. 100391-001

**2. Assemble double socket
over DN50 inlets**

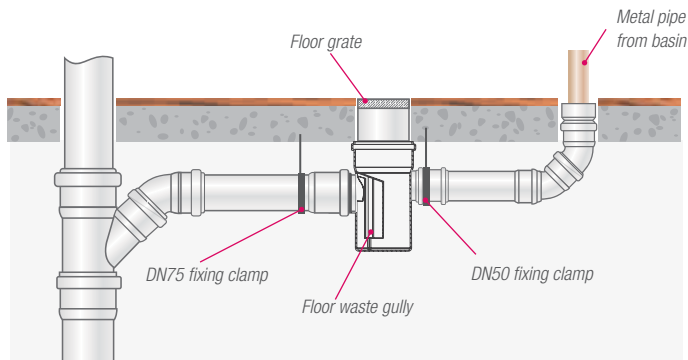
*DN50 double socket
art no: 121484*



*Floor waste gully with double sockets
on inlets*

RAUPIANO PLUS

FLOOR WASTE GULLY - INSTALLATION



3. Install floor waste gully beneath slab by inserting over DN110 penetration
4. Install socket of DN75 pipe over outlet
5. Install DN50 pipe into socket of inlets
6. Secure floor gully by installing fixed brackets on DN75 outlet and opposite DN50 inlet.



This schematic shows a general example and is not intended to satisfy the installation requirements for any particular project. For the installation of the Floor Waste Gully and RAUPIANO PLUS waste water piping system, national and local codes, rules and regulations, as well as local conditions and the demands of the end use customer, and REHAU's **RAUPIANO PLUS Technical Information** available on www.rehau.com.au need to be considered.