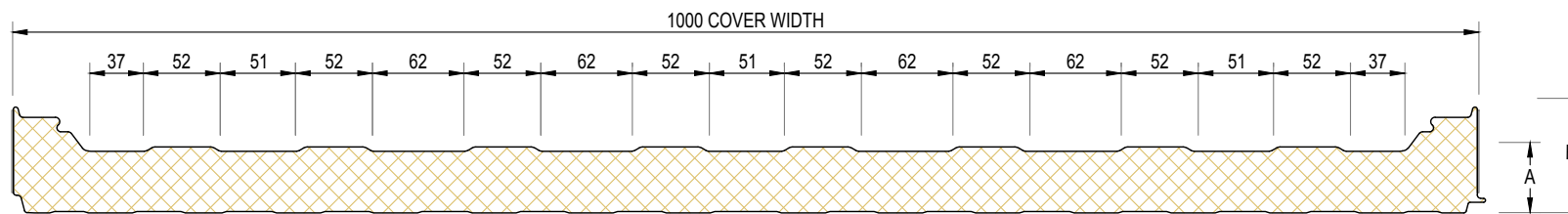
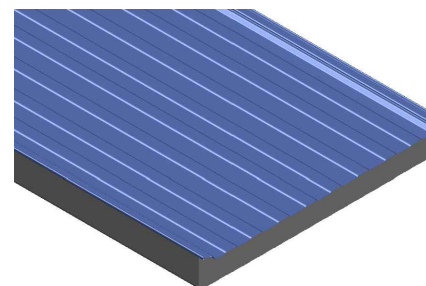
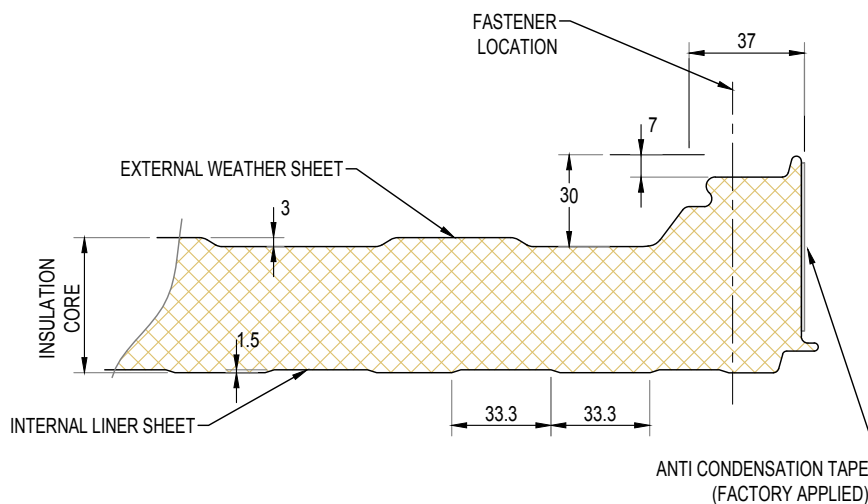
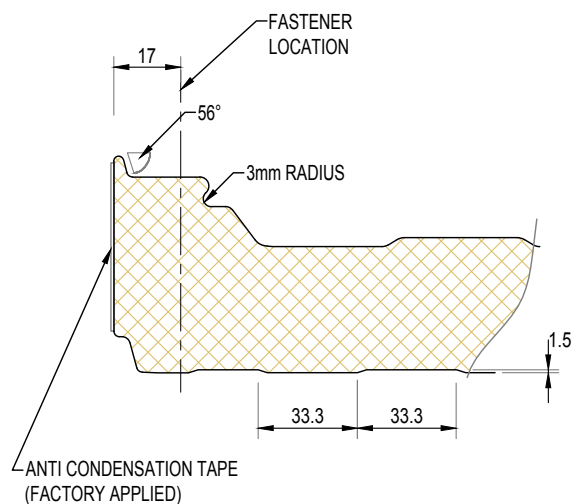


KS1000 LP ROOF PANEL DIMENSIONS



AVAILABLE PANEL THICKNESSES

| INSULATION CORE (A) | OVERALL PANEL THICKNESS (B) |
|---------------------|-----------------------------|
| 45 | 75 |
| 60 | 90 |
| 80 | 110 |
| 100 | 130 |



NOTE: ABOVE DIMENSIONS ARE THEORETICAL, ACTUAL DIMENSIONS WILL VARY DUE TO MANUFACTURING TOLERANCES. PRECISE DIMENSIONS MUST ALWAYS BE MEASURED FROM ACTUAL SAMPLES. ALL DIMENSIONS IN MILLIMETRES.

| | | | |
|--|------------------|-----------------|------------------|
| SYSTEM KS1000 LP ROOF_STD Q1 2016.DWG | | | |
| DESCRIPTION KS1000 LP ROOF PANEL DIMENSIONS | | | |
| APPROVED BY APPR | DATE 11.02.16 | REVISION 1 | |
| DRG REF: LP_RS_01 | SCALE 1:5 | SHEET 1 of 1 | PAPER SIZE A4 |

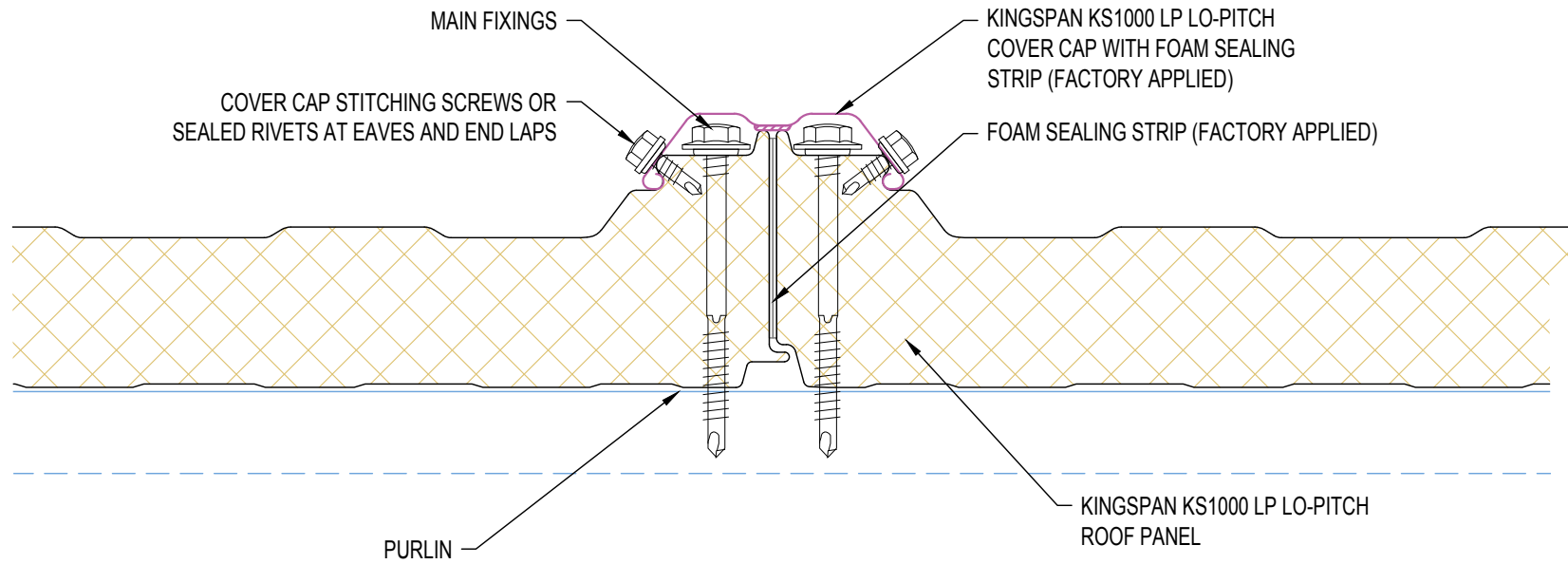
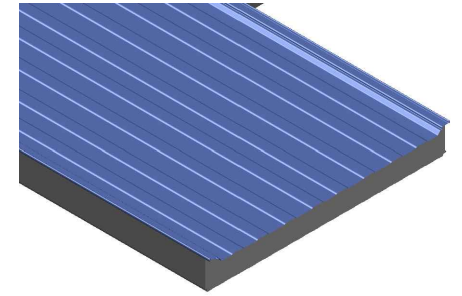
This document remains the property of Kingspan Ltd under copyright laws. Licence is granted to use this document and its contents in connection with Kingspan Ltd products only.
©Kingspan Ltd

DO NOT SCALE. IF IN DOUBT ASK

New Zealand: Kingspan Ltd
97 Montreal St
Christchurch
Tel: +64 (3) 260 5530
Fax: +64 (3) 260 5539
Freephone: 0800 121280
email: info@kingspanpanels.co.nz
www.kingspanpanels.co.nz



KS1000 LP SIDE JOIN & COVER CAP FIXING LOCATIONS



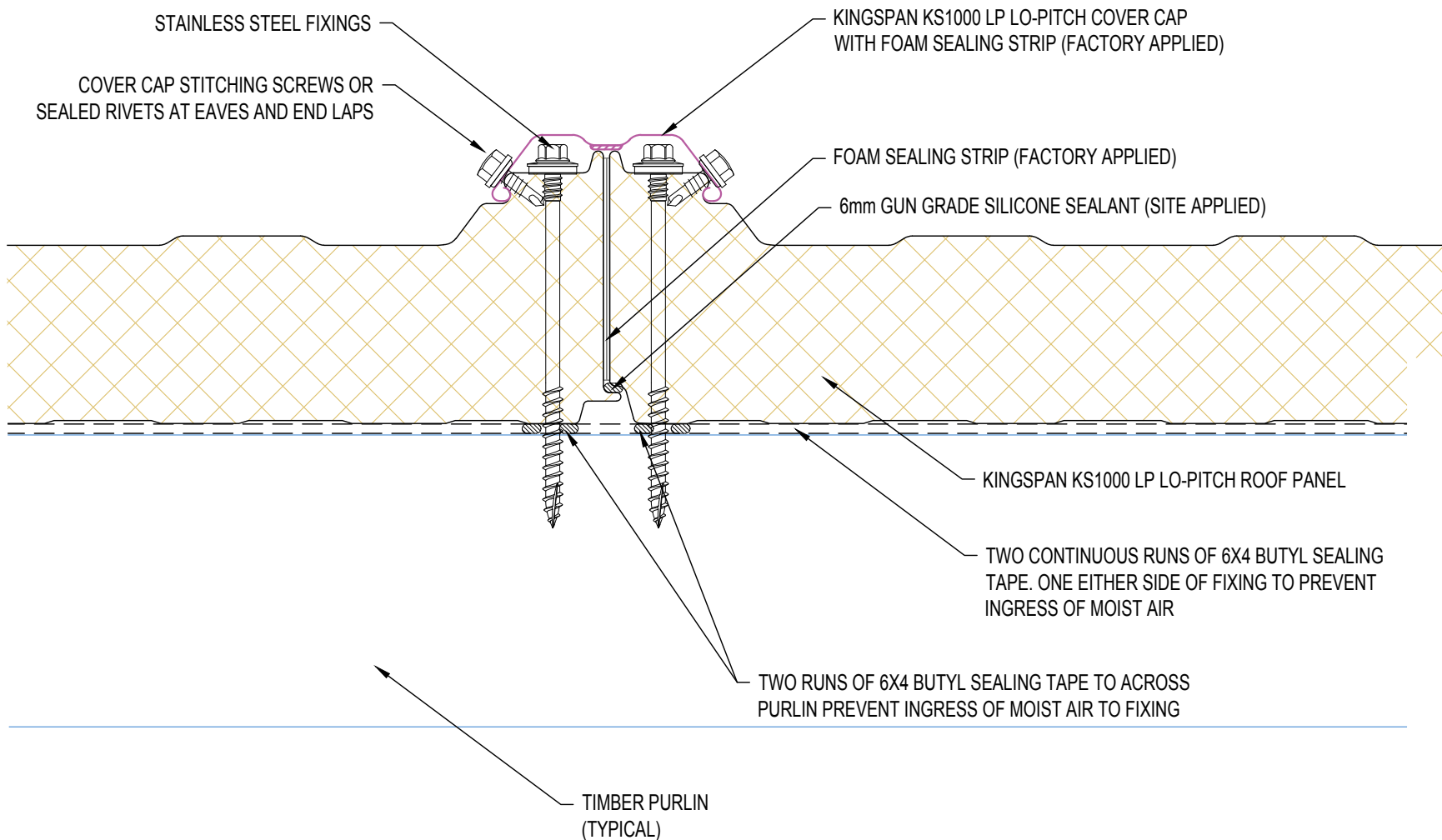
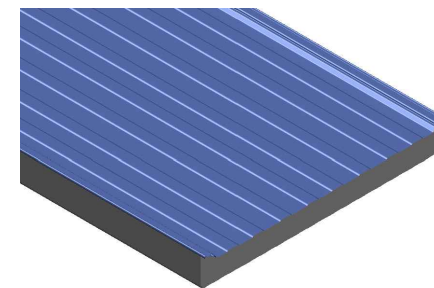
| | | | |
|--|------------------|-----------------|------------------|
| SYSTEM KS1000 LP ROOF_STD Q1 2016.DWG | | | |
| DESCRIPTION KS1000 LP SIDE JOIN & COVER CAP FIXING LOCATIONS | | | |
| APPROVED BY APPR | DATE 11.02.16 | REVISION 1 | |
| DRG REF: LP_RS_02 | SCALE 1:5 | SHEET 1 OF 1 | PAPER SIZE A4 |

This document remains the property of Kingspan Ltd under copyright laws. Licence is granted to use this document and its contents in connection with Kingspan Ltd products only.
©Kingspan Ltd

DO NOT SCALE. IF IN DOUBT ASK

New Zealand: Kingspan Ltd
97 Montreal St
Christchurch
Tel: +64 (3) 260 5530
Fax: +64 (3) 260 5539
Freephone: 0800 121280
email: info@kingspanpanels.co.nz
www.kingspanpanels.co.nz

KS1000 LP SIDE JOIN & COVER CAP FIXING LOCATIONS (HIGH HUMIDITY)



| | | |
|--------------------------------|--|--|
| SYSTEM | | |
| KS1000 LP ROOF_STD Q1 2016.DWG | | |

| | | |
|--|--|--|
| DESCRIPTION | | |
| KS1000 LP SIDE JOIN & COVER CAP FIXING LOCATIONS (HIGH HUMIDITY) | | |

| | | |
|-------------|----------|------------|
| APPROVED BY | DATE | REVISION |
| APPR | 11.02.16 | 1 |
| DRG REF: | SCALE | SHEET |
| LP_RS_03 | 1:5 | 1 OF 1 |
| | | PAPER SIZE |
| | | A4 |

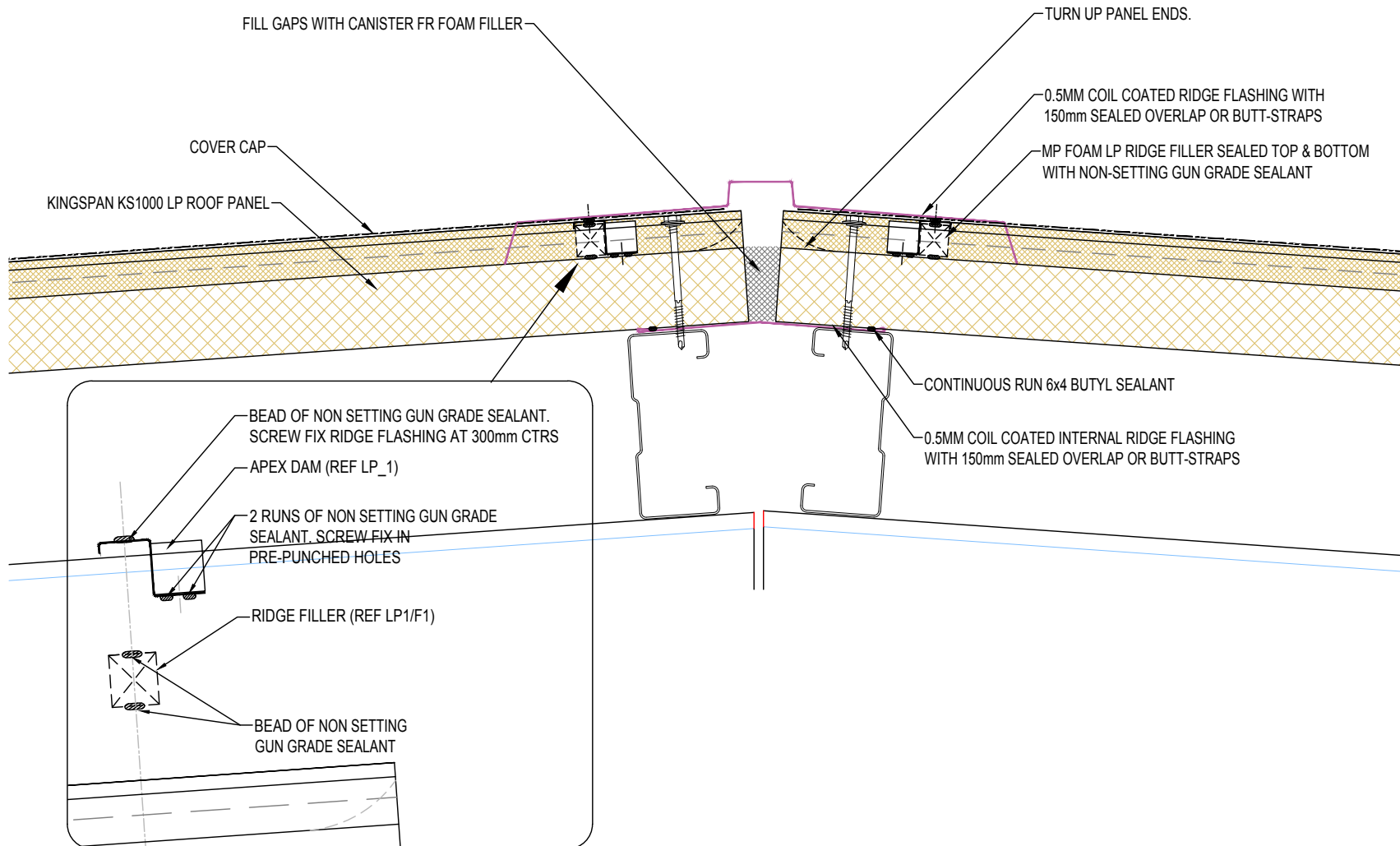
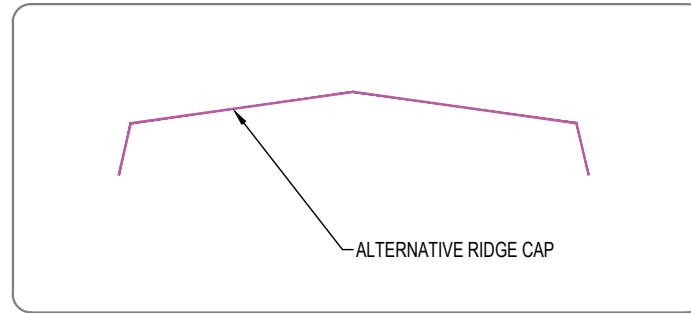
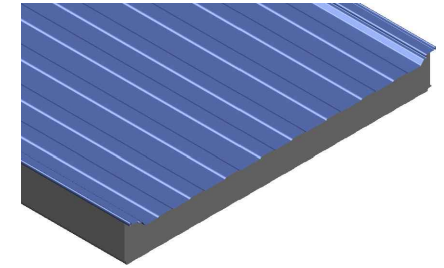
This document remains the property of Kingspan Ltd under copyright laws. Licence is granted to use this document and its contents in connection with Kingspan Ltd products only.
©Kingspan Ltd

DO NOT SCALE. IF IN DOUBT ASK

New Zealand: Kingspan Ltd
97 Montreal St
Christchurch
Tel: +64 (3) 260 5530
Fax: +64 (3) 260 5539
Freephone: 0800 121280
email: info@kingspanpanels.co.nz
www.kingspanpanels.co.nz

G:\Technical\current\Drawings\current\2013 Q1\lo_pitch\Facit\KS1000 LP ROOF_STD Q1 2016.dwg, LP_RS_03, 8/12/2016 12:39:52 p.m.

KS1000 LP RIDGE DETAIL



| | | | |
|--|------------------|-----------------|------------------|
| SYSTEM KS1000 LP ROOF_STD Q1 2016.DWG | | | |
| DESCRIPTION KS1000 LP RIDGE DETAIL | | | |
| APPROVED BY APPR | DATE 11.02.16 | REVISION 1 | |
| DRG REF: LP_RS_04 | SCALE 1:5 | SHEET 1 OF 1 | PAPER SIZE A4 |

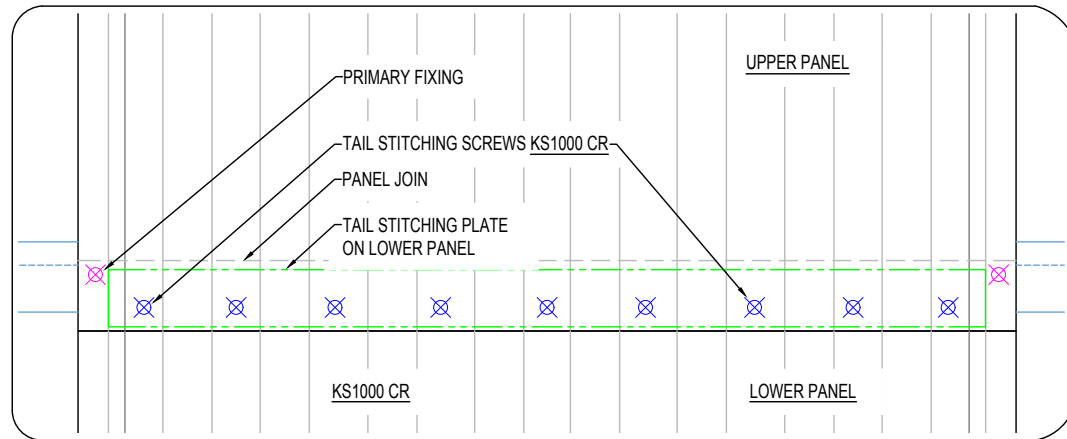
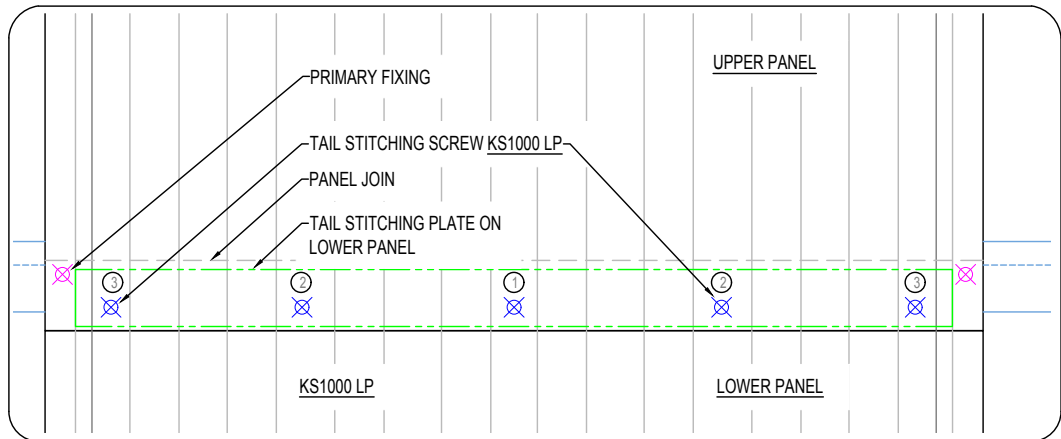
This document remains the property of Kingspan Ltd under copyright laws. Licence is granted to use this document and its contents in connection with Kingspan Ltd products only.
©Kingspan Ltd

DO NOT SCALE. IF IN DOUBT ASK

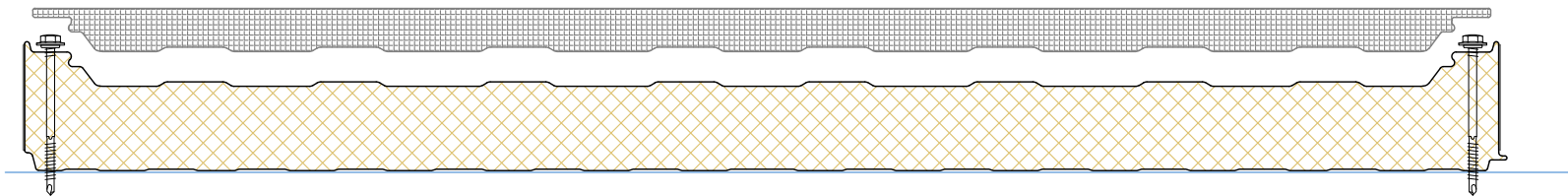
New Zealand: Kingspan Ltd
97 Montreal St
Christchurch
Tel: +64 (3) 260 5530
Fax: +64 (3) 260 5539
Freephone: 0800 121280
email: info@kingspanpanels.co.nz
www.kingspanpanels.co.nz

Kingspan.
Insulated Panels

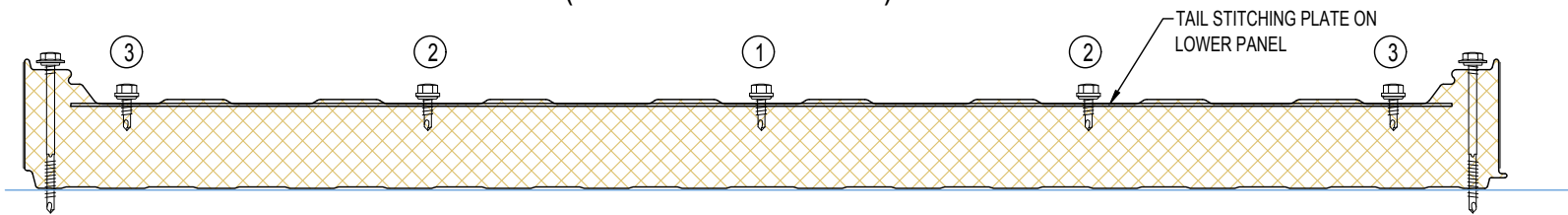
KS1000 LP END LAP FIXING LOCATIONS



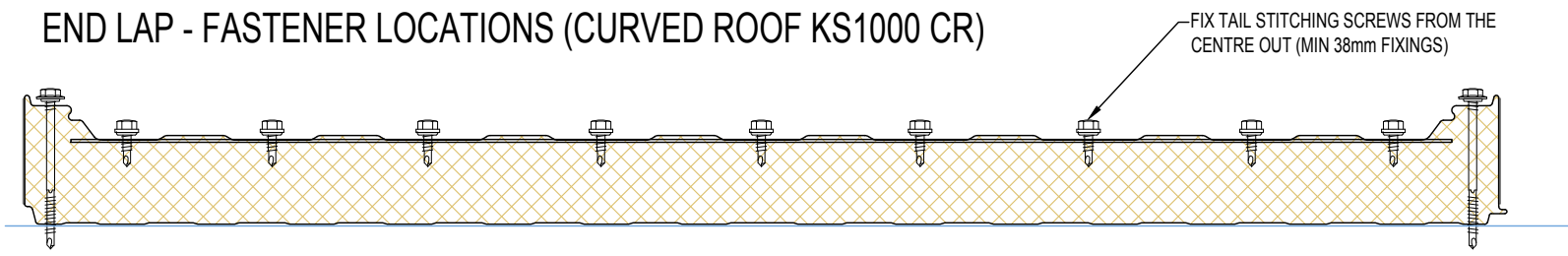
PROFILED FILLER AT RIDGE



END LAP - FASTENER LOCATIONS (LO-PITCH KS1000 LP)



END LAP - FASTENER LOCATIONS (CURVED ROOF KS1000 CR)



| | | | |
|---|------------------|-----------------|------------------|
| SYSTEM KS1000 LP ROOF_STD Q1 2016.DWG | | | |
| DESCRIPTION KS1000 LP END LAP FIXING LOCATIONS | | | |
| APPROVED BY APPR | DATE 11.02.16 | REVISION 1 | |
| DRG REF: LP_RS_05 | SCALE 1:5 | SHEET 1 OF 1 | PAPER SIZE A4 |

This document remains the property of Kingspan Ltd under copyright laws. Licence is granted to use this document and its contents in connection with Kingspan Ltd products only.
©Kingspan Ltd

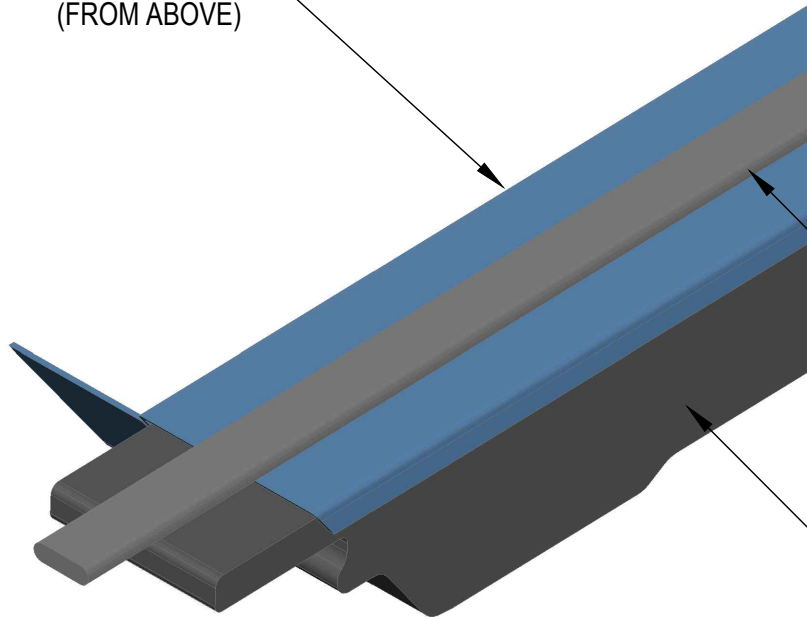
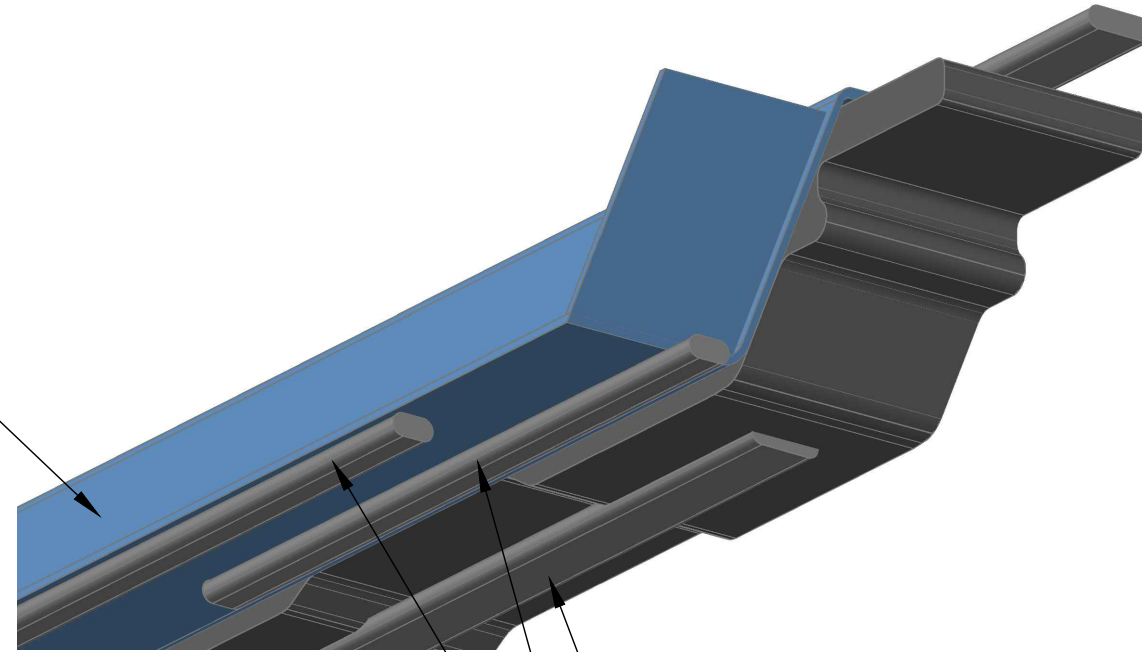
DO NOT SCALE. IF IN DOUBT ASK

New Zealand: Kingspan Ltd
97 Montreal St
Christchurch
Tel: +64 (3) 260 5530
Fax: +64 (3) 260 5539
Freephone: 0800 121280
email: info@kingspanpanels.co.nz
www.kingspanpanels.co.nz

KS1000 LP APEX DAM

FOLDED STEEL RIDGE DAM
(FROM BELOW)

FOLDED STEEL RIDGE DAM
(FROM ABOVE)



10mm RUN NON-SETTING GUN GRADE SEALANT TO TOP & BOTTOM OF FOAM FILLER TO FOLLOW PROFILE

2X6mm RUNS NON-SETTING GUN GRADE SEALANT TO FOLLOW PROFILE

CONTINUOUS 10mm RUN NON-SETTING GUN GRADE BUTYL SEALANT

MP FOAM RIDGE FILLER SEALED TOP & BOTTOM WITH BEAD OF NON-SETTING GUN GRADE SEALANT

| | | | |
|--|------------------|-----------------|------------------|
| SYSTEM KS1000 LP ROOF_STD Q1 2016.DWG | | | |
| DESCRIPTION KS1000 LP APEX DAM | | | |
| APPROVED BY APPR | DATE 11.02.16 | REVISION 1 | |
| DRG REF: LP_RS_06 | SCALE 1:1 | SHEET 1 OF 1 | PAPER SIZE A4 |

This document remains the property of Kingspan Ltd under copyright laws. Licence is granted to use this document and its contents in connection with Kingspan Ltd products only.
©Kingspan Ltd

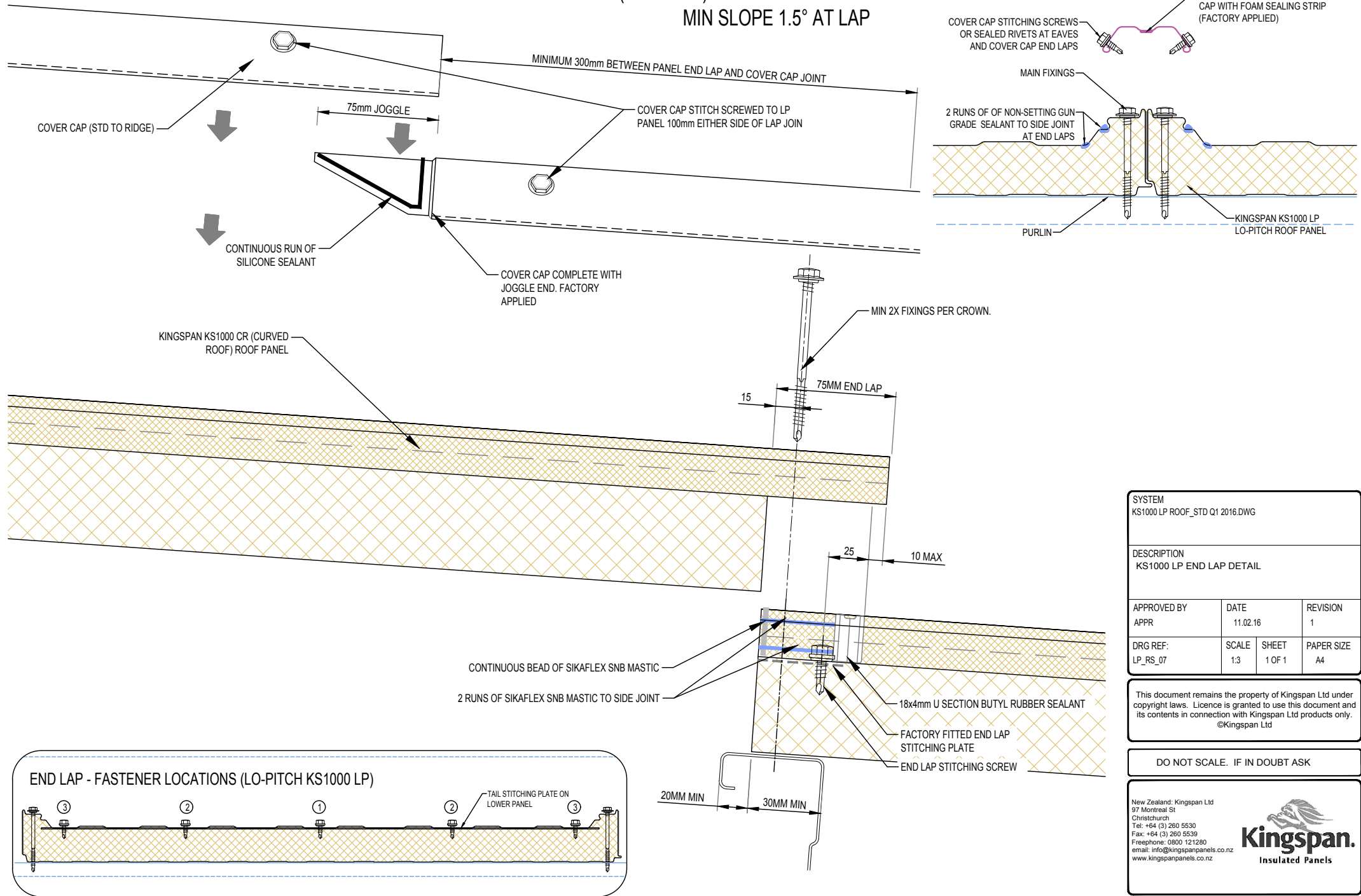
DO NOT SCALE. IF IN DOUBT ASK

New Zealand: Kingspan Ltd
97 Montreal St
Christchurch
Tel: +64 (3) 260 5530
Fax: +64 (3) 260 5539
Freephone: 0800 121280
email: info@kingspanpanels.co.nz
www.kingspanpanels.co.nz



KS1000 LP END LAP DETAIL

KS1000 LP (LO-PITCH) PANEL LAP DETAIL. MIN SLOPE 1.5° AT LAP



| | | | |
|--|------------------|-----------------|------------------|
| SYSTEM KS1000 LP ROOF_STD Q1 2016.DWG | | | |
| DESCRIPTION KS1000 LP END LAP DETAIL | | | |
| APPROVED BY APPR | DATE 11.02.16 | REVISION 1 | |
| DRG REF: LP_RS_07 | SCALE 1:3 | SHEET 1 OF 1 | PAPER SIZE A4 |

This document remains the property of Kingspan Ltd under copyright laws. Licence is granted to use this document and its contents in connection with Kingspan Ltd products only.
©Kingspan Ltd

DO NOT SCALE. IF IN DOUBT ASK

New Zealand: Kingspan Ltd
97 Montreal St
Christchurch
Tel: +64 (3) 260 5530
Fax: +64 (3) 260 5539
Freephone: 0800 121280
email: info@kingspanpanels.co.nz
www.kingspanpanels.co.nz

G:\Technical\current\Drawings\current\2013 Q1\lo_pitch_Roof\KS1000 LP ROOF_STD Q1 2016.dwg, LP_RS_07, 8/12/2016 12:39:55 p.m.

KS1000 LP EAVES DETAIL

75mm EAVES OVERHANG. TURN DOWN PAN AT EAVES

COVER CAP STITCH SCREWED TO LP PANEL 100mm UP FROM EAVES

SITE APPLIED NON-SETTING GUN GRADE EAVES SEAL

KINGSPAN KS1000 LP ROOF PANEL

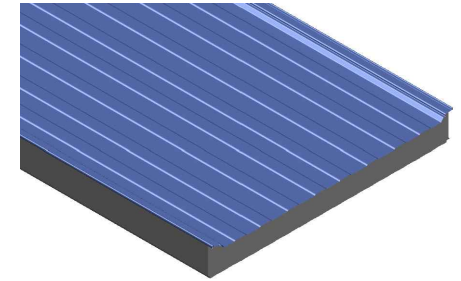
INTERNAL FLASHING SEALED WITH 6x4 BUTYL SEALANT. LAP AND SEAL JOINS TO MAINTAIN CONTINUITY OF SEALANT

FILL GAPS WITH FR FOAM FILLER

PRESSED STEEL GUTTER

GUTTER BRACKET ATTACHED TO FASCIA BOARD FIXED TO EAVES PURLIN.
CUT PANEL. FIXINGS AT 1.0M CTRS

KINGSPAN KS1000 AWP PANEL HORIZONTALLY LAID



| | | | |
|--|------------------|-----------------|------------------|
| SYSTEM KS1000 LP ROOF_STD Q1 2016.DWG | | | |
| DESCRIPTION KS1000 LP EAVES DETAIL | | | |
| APPROVED BY APPR | DATE 11.02.16 | REVISION 1 | |
| DRG REF: LP_RS_08 | SCALE 1:5 | SHEET 1 OF 1 | PAPER SIZE A4 |

This document remains the property of Kingspan Ltd under copyright laws. Licence is granted to use this document and its contents in connection with Kingspan Ltd products only.
©Kingspan Ltd

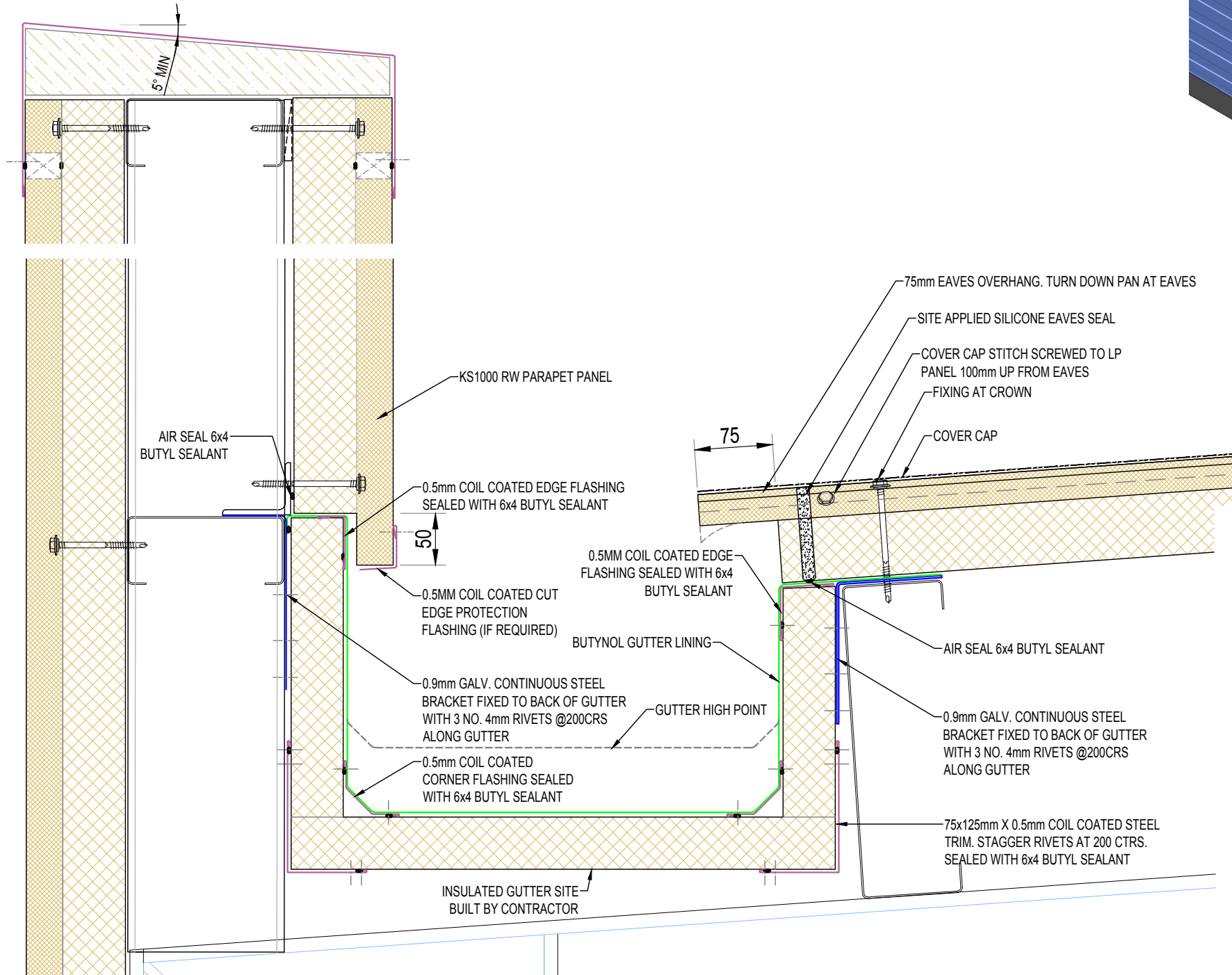
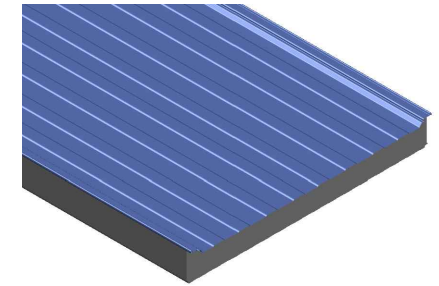
DO NOT SCALE. IF IN DOUBT ASK

New Zealand: Kingspan Ltd
97 Montreal St
Christchurch
Tel: +64 (3) 260 5530
Fax: +64 (3) 260 5539
Freephone: 0800 121280
email: info@kingspanpanels.co.nz
www.kingspanpanels.co.nz

Kingspan.
Insulated Panels

G:\Technical\current\Drawings\current\2013 Q1\No_gitch Rev\KS1000 LP ROOF_STD Q1 2016.dwg, LP_RS_08, 8/12/2016 12:39:56 p.m.

KS1000 LP INTERNAL GUTTER DETAIL



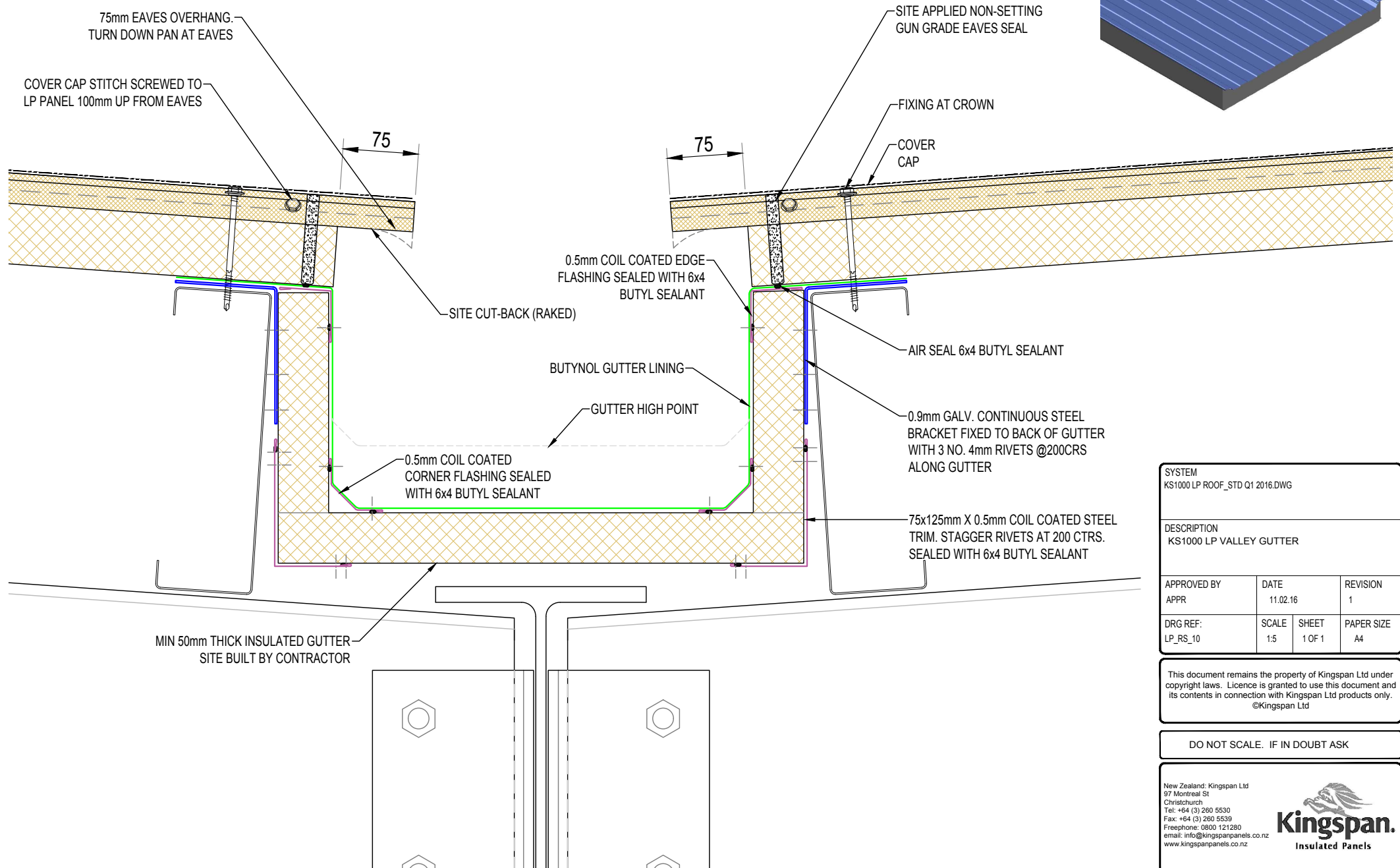
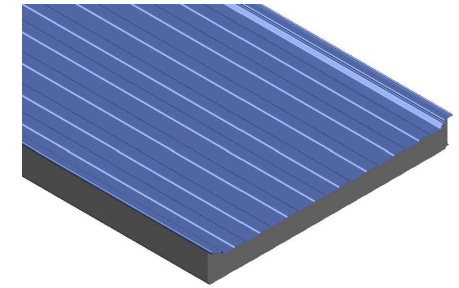
| | | | |
|---|------------------|-----------------|------------------|
| SYSTEM KS1000 LP ROOF_STD Q1 2016.DWG | | | |
| DESCRIPTION KS1000 LP INTERNAL GUTTER DETAIL | | | |
| APPROVED BY APPR | DATE 11.02.16 | REVISION 1 | |
| DRG REF: LP_RS_09 | SCALE 1:5 | SHEET 1 of 1 | PAPER SIZE A4 |
| This document remains the property of Kingspan Ltd under copyright laws. Licence is granted to use this document and its contents in connection with Kingspan Ltd products only. ©Kingspan Ltd | | | |

DO NOT SCALE. IF IN DOUBT ASK

New Zealand: Kingspan Ltd
97 Montreal St
Christchurch
Tel: +64 (3) 260 5530
Fax: +64 (3) 260 5539
Freephone: 0800 121280
email: info@kingspanpanels.co.nz
www.kingspanpanels.co.nz

G:\Technical\current\Drawings\current\2013 Q1\lp_roof\KS1000 LP ROOF_STD Q1 2016.dwg, LP_RS_09, 8/12/2016 12:39:56 p.m.

KS1000 LP VALLEY GUTTER



| | | | |
|--|------------------|-----------------|------------------|
| SYSTEM KS1000 LP ROOF_STD Q1 2016.DWG | | | |
| DESCRIPTION KS1000 LP VALLEY GUTTER | | | |
| APPROVED BY APPR | DATE 11.02.16 | REVISION 1 | |
| DRG REF: LP_RS_10 | SCALE 1:5 | SHEET 1 OF 1 | PAPER SIZE A4 |

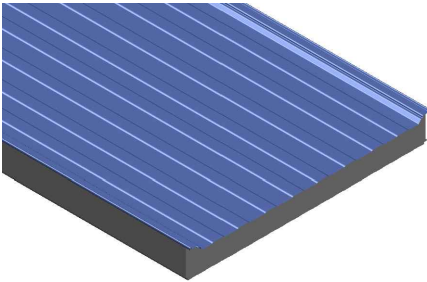
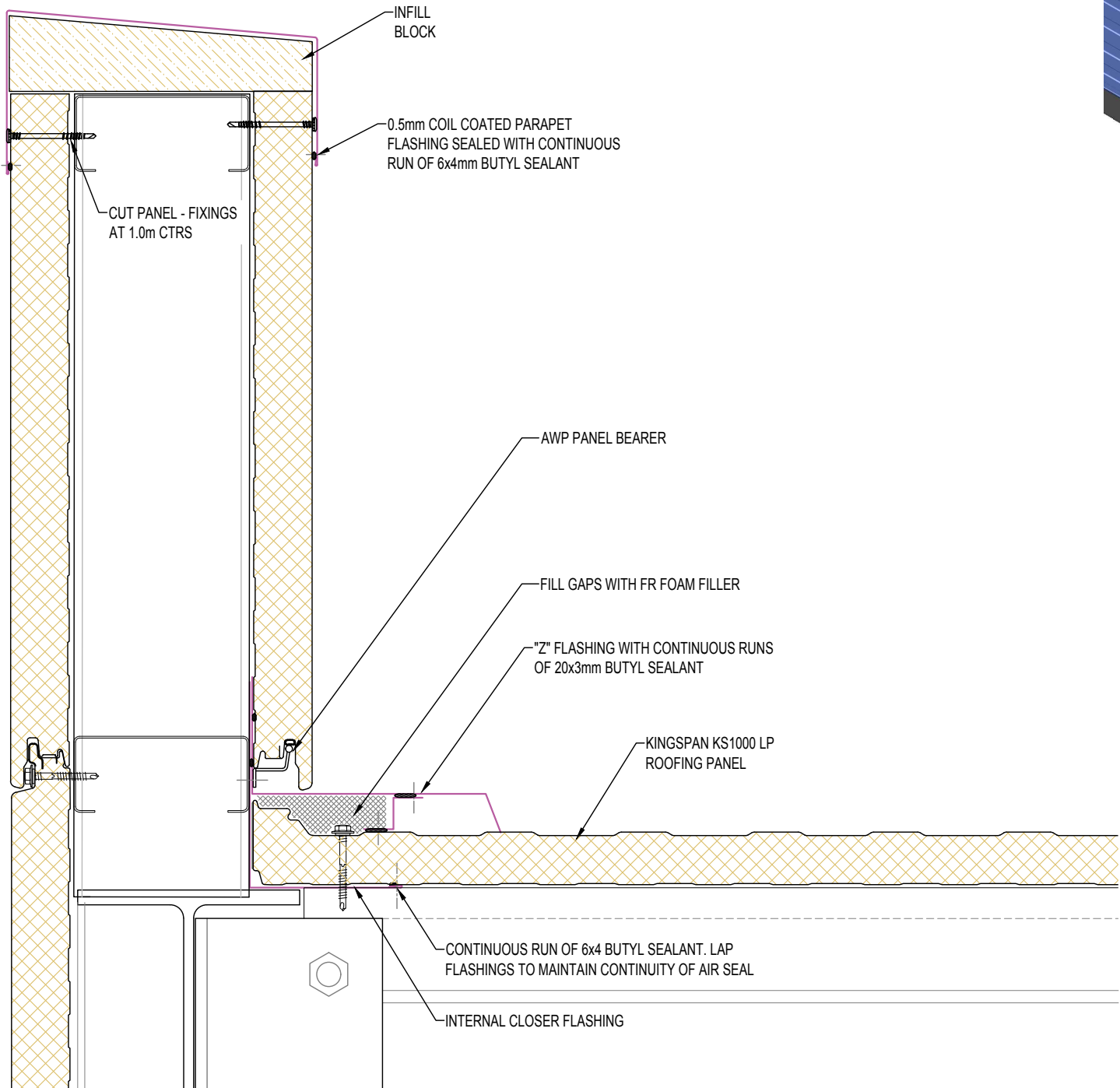
This document remains the property of Kingspan Ltd under copyright laws. Licence is granted to use this document and its contents in connection with Kingspan Ltd products only.
©Kingspan Ltd

DO NOT SCALE. IF IN DOUBT ASK

New Zealand: Kingspan Ltd
97 Montreal St
Christchurch
Tel: +64 (3) 260 5530
Fax: +64 (3) 260 5539
Freephone: 0800 121280
email: info@kingspanpanels.co.nz
www.kingspanpanels.co.nz

G:\Technical\current\Drawings\current\2013 Q1\lp_roof_std\KS1000 LP ROOF_STD Q1 2016.dwg, LP_RS_10, 8/12/2016 12:39:57 p.m.

KS1000 LP VERGE PARAPET



| | | | |
|--|------------------|-----------------|------------------|
| SYSTEM KS1000 LP ROOF_STD Q1 2016.DWG | | | |
| DESCRIPTION KS1000 LP VERGE PARAPET | | | |
| APPROVED BY APPR | DATE 11.02.16 | REVISION 1 | |
| DRG REF: LP_RS_12 | SCALE 1:5 | SHEET 1 OF 1 | PAPER SIZE A4 |

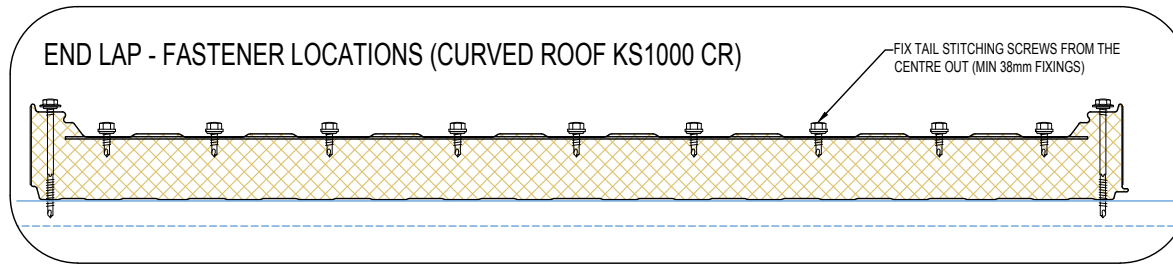
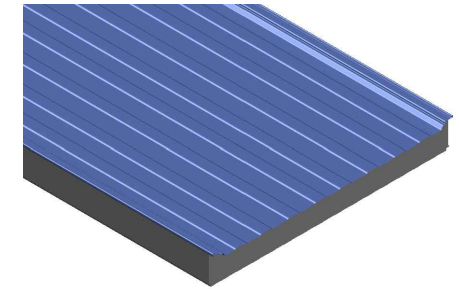
This document remains the property of Kingspan Ltd under copyright laws. Licence is granted to use this document and its contents in connection with Kingspan Ltd products only.
©Kingspan Ltd

DO NOT SCALE. IF IN DOUBT ASK

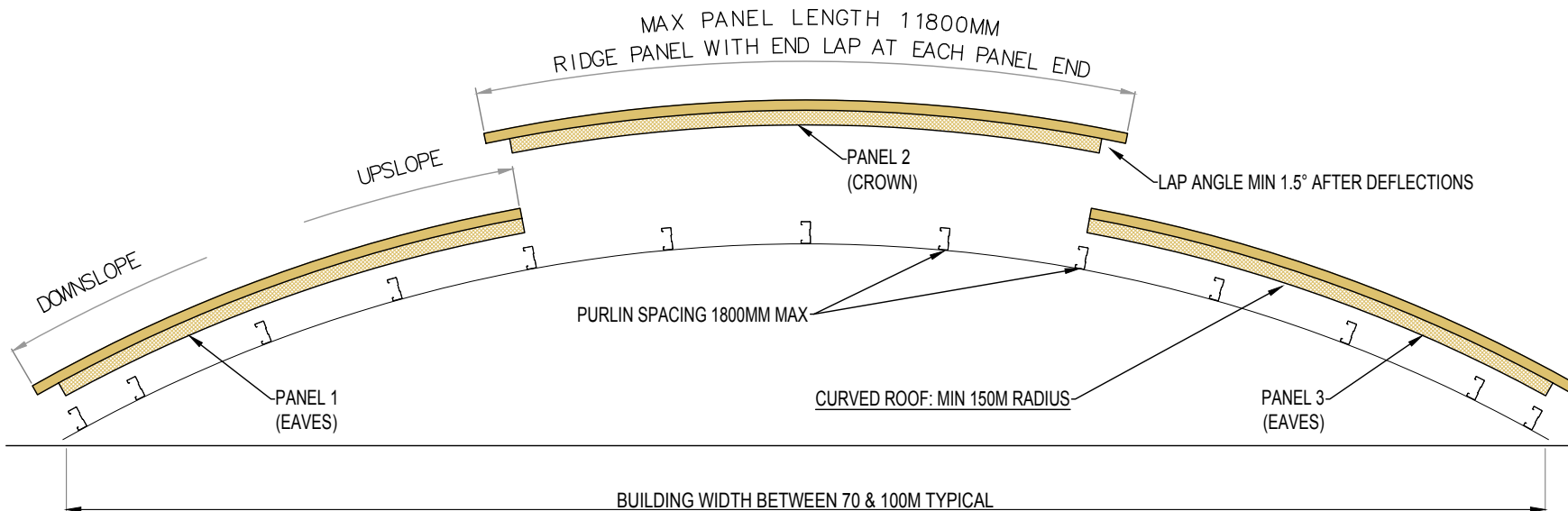
New Zealand: Kingspan Ltd
97 Montreal St
Christchurch
Tel: +64 (3) 260 5530
Fax: +64 (3) 260 5539
Freephone: 0800 121280
email: info@kingspanpanels.co.nz
www.kingspanpanels.co.nz

G:\Technical\current\Drawings\current\2013 Q1\lo_gj\ch Rev\KS1000 LP ROOF_STD Q1 2016.dwg, LP_RS_12, 8/12/2016 12:39:56 p.m.

KS1000 CR CURVED ROOF SETOUT



KS1000 CR - CURVED ROOF PANEL LAYOUT SEQUENCE



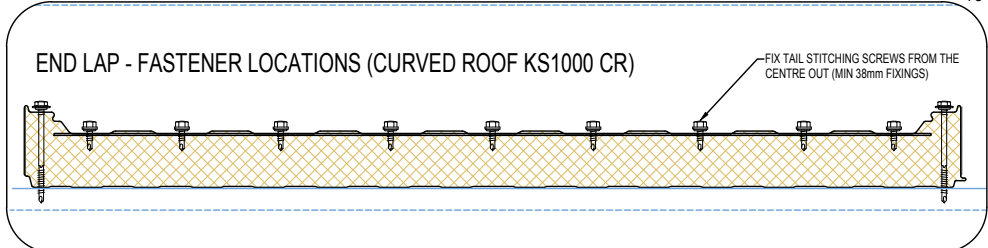
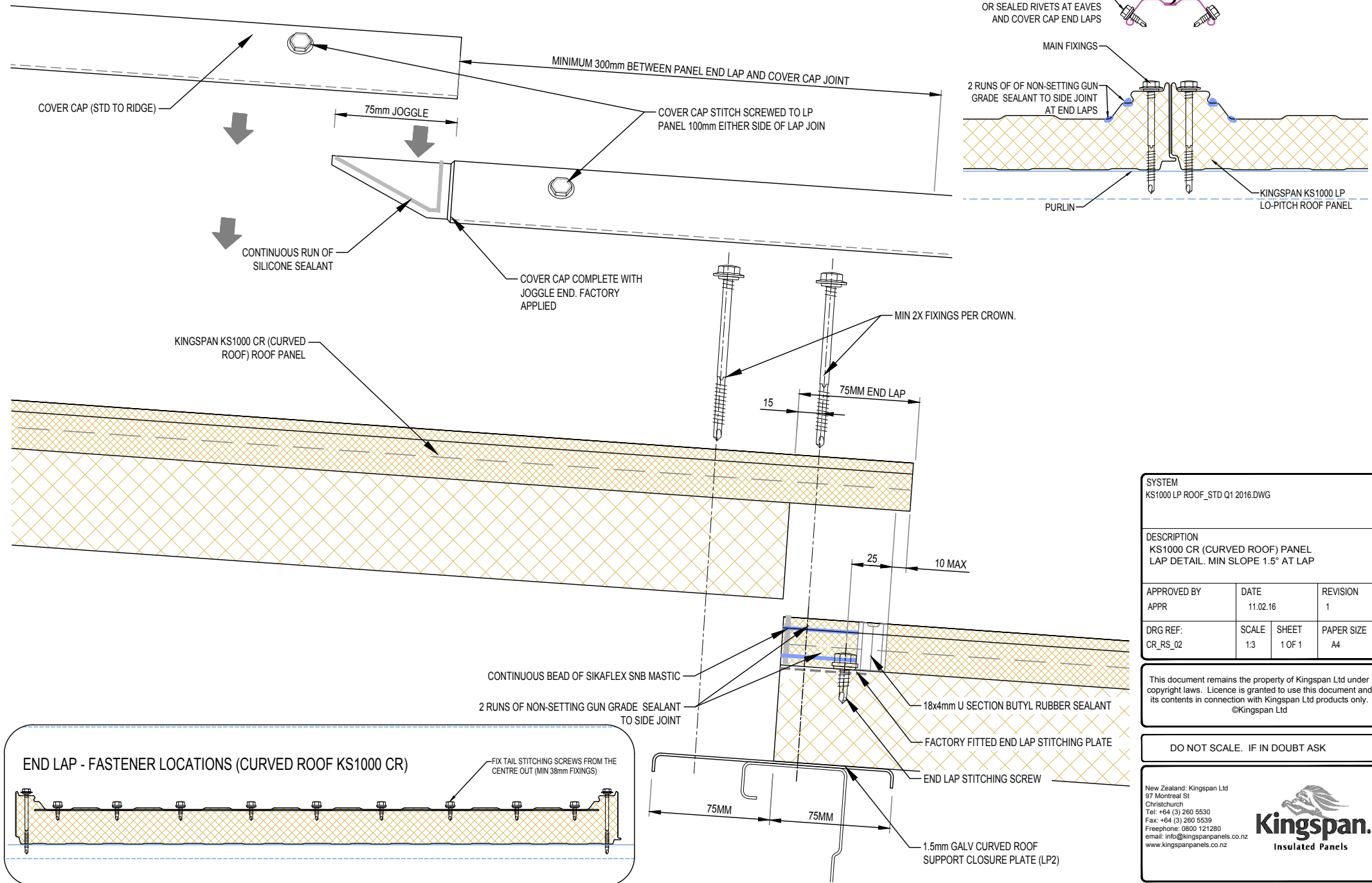
| | | | |
|---|------------------|-----------------|------------------|
| SYSTEM KS1000 LP ROOF_STD Q1 2016.DWG | | | |
| DESCRIPTION KS1000 CR CURVED ROOF SETOUT | | | |
| APPROVED BY APPR | DATE 11.02.16 | REVISION 1 | |
| DRG REF: CR_RS_01 | SCALE NTS | SHEET 1 OF 1 | PAPER SIZE A4 |
| This document remains the property of Kingspan Ltd under copyright laws. Licence is granted to use this document and its contents in connection with Kingspan Ltd products only. ©Kingspan Ltd | | | |

DO NOT SCALE. IF IN DOUBT ASK

New Zealand: Kingspan Ltd
97 Montreal St
Christchurch
Tel: +64 (3) 260 5530
Fax: +64 (3) 260 5539
Freephone: 0800 121280
email: info@kingspanpanels.co.nz
www.kingspanpanels.co.nz



KS1000 CR (CURVED ROOF) PANEL LAP DETAIL. MIN SLOPE 1.5° AT LAP



| | | | |
|---|------------------|-----------------|------------------|
| SYSTEM KS1000 LP ROOF_STD Q1 2016.DWG | | | |
| DESCRIPTION KS1000 CR (CURVED ROOF) PANEL LAP DETAIL. MIN SLOPE 1.5° AT LAP | | | |
| APPROVED BY APPR | DATE 11.02.16 | REVISION 1 | |
| DRG REF: CR_RS_02 | SCALE 1:3 | SHEET 1 OF 1 | PAPER SIZE A4 |
| This document remains the property of Kingspan Ltd under copyright laws. Licence is granted to use this document and its contents in connection with Kingspan Ltd products only. ©Kingspan Ltd | | | |
| DO NOT SCALE. IF IN DOUBT ASK | | | |
| New Zealand: Kingspan Ltd 97 Montreal St Christchurch Tel: +64 (3) 260 5530 Fax: +64 (3) 260 5539 Freephone: 0800 121280 email: info@kingspanpanels.co.nz www.kingspanpanels.co.nz | | | |
| | | | |

G:\Technical\current\Drawings\current 2013 Q1\lp_roof_std_q1_2016.dwg, CR_RS_02, 8/12/2016 12:39:59 p.m.