

StyleLite[®]

Superior gloss and matte panels

StyleLite®

Create luxury kitchen and bathroom cabinets, bespoke furniture, and feature panels.



Above: Kitchen featuring StyleLite Carbon TruMatte cabinetry and Zenolite Glacier splashback.



Above: Kitchen featuring StyleLite Wired Zinc and Arctic TruMatte cabinetry.

StyleLite panels are available in both TruMatte and TruGloss. It is an ideal solution for cabinetmakers, builders, architects and discerning homeowners.



No Fingerprints
(TruMatte)



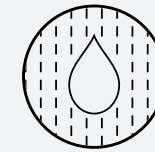
Easy to Clean



Easy to Work



Quick to Install



Water Resistant



UV Protected



10 yr warranty



Vertical Application



Environmental



Recyclable

Applications



Kitchens, vanity and bathroom cabinets

Kitchen featuring StyleLite Carbon TruMatte cabinetry with Lustralite Calacatta panels.



Office furniture and partitions

Reception featuring StyleLite Arctic TruGloss and Wired Mercury TruMatte cabinetry.



Laundry, wardrobes and doors

Wardrobe featuring StyleLite Ash TruGloss cabinetry.



Retail displays

Shop featuring StyleLite Shell TruMatte cabinetry.



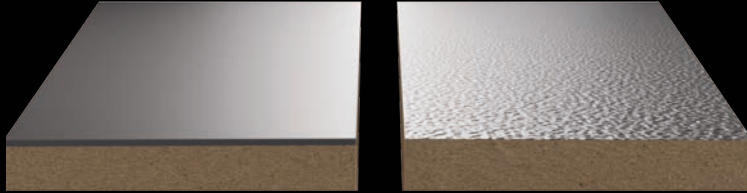
Caravan and RV joinery

Caravan interior featuring StyleLite Arctic TruGloss and Arctic TruMatte cabinetry.

StyleLite vs 2 Pack Comparison

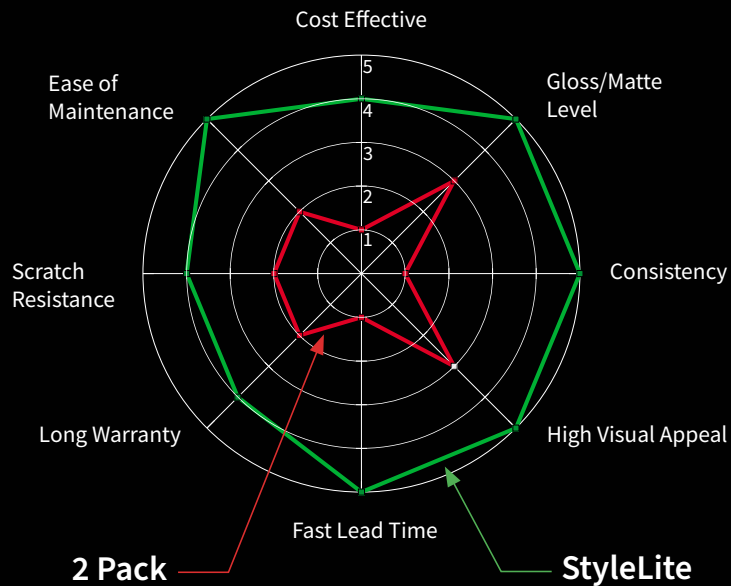
StyleLite flawless finish

2 Pack orange peel finish



Finally...Perfect looking kitchen panels!

Look closely. You'll see most painted kitchen panels are rippled. StyleLite acrylic panels are flawless. And your new kitchen looks better!



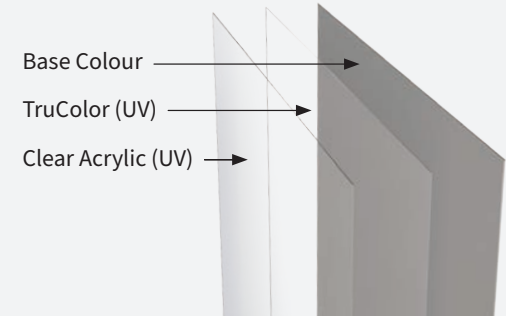
TruColor Technology

TruColor is the latest and most advanced StyleLite sheet technology.

TruColor features a unique combination of clear and coloured layers that are fused together during manufacture using a sophisticated multilayer die and triple extrusion process.



The StyleLite Promise



Why StyleLite panels last longer

Trucolor technology protects against UV. It's why we guarantee StyleLite resists fading. Feel confident your kitchen will look great for years to come.



Kitchen featuring StyleLite Arctic TruGloss and Carbon TruMatte cabinetry.

Design Guidelines

This product is designed for use in vertical surface applications only. StyleLite is not designed for structural applications. Heat assisted forming/bending of the sheet must be performed in accordance with the StyleLite Install and Specifications Guide.

Guaranteed Quality

StyleLite Panels are created by laminating StyleLite Acrylic Sheet front and back to a variety of substrates using our premier polyurethane (PUR) hot melt bonding system. This system produces a ripple-free finish that is highly resistant to heat, moisture and environmental change over time.

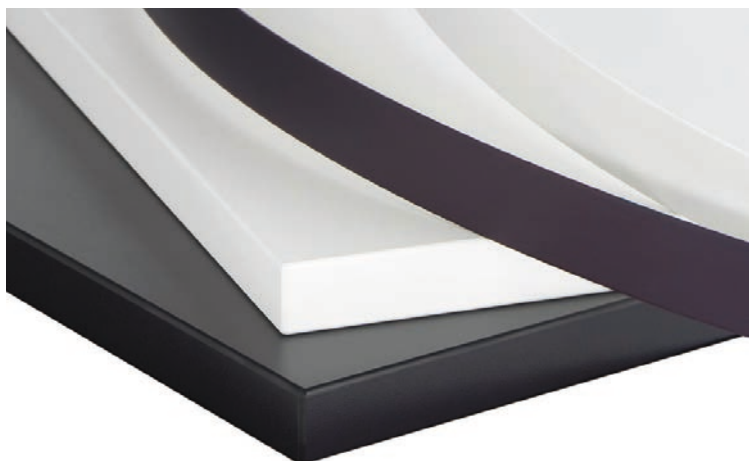
EGR Decor production facilities are recognised for achieving ISO9001 Quality Management certification for their consistent performance and quality systems.



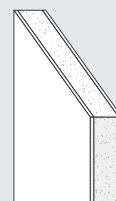
Edge Finishing

All StyleLite compatible Edge Band is of premium quality and offer high resistance to heat, abrasion, impact and colour fade. StyleLite Edge Band is available in two options – Pre-primed and Fusion.

For full details, refer to the **Installation and Specifications Guide**, available on www.stylelite.net, or talk to your local distributor.

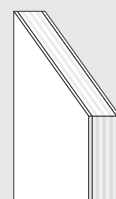


Technical



StyleLite MDF Panels

Regular StyleLite panels, suitable for a range of general purpose applications. Uses premium quality moisture-resistant MDF. Perfect for kitchen and vanity doors and panels, furniture, hinged wardrobe doors, and general cabinetry. Double sided and single sided (with colour matched backer) options available in both TruGloss and TruMatte.



StyleLite Lightweight Plywood Panels

Lightweight panels, perfect for when weight is a consideration. Uses high quality lightweight plywood. Great for interior fit out for caravans and RVs – from furniture and kitchen cabinetry, to vanity doors and panels. Available in both TruGloss and TruMatte.

Product	MDF Panels*	Lightweight Plywood Panels†
Substrate	MR MDF E0	Lightweight Plywood
Sheet Size (nom)	2440 × 1220 × 18mm	2440 × 1220 × 14mm
	3060 × 1230 × 18mm	2440 × 1220 × 17mm
Region	Global	Global
Weight	13.5kg/m ²	7kg/m ² (14mm)
		8kg/m ² (17mm)
Finish	TruGloss and TruMatte	TruGloss and TruMatte

* Other Substrates available on request. Optional White Textured Backing Sheet also available on all products except MR MDF E0 3000 x 1200 x 18mm.

† Optional White Textured Backing Sheet also available.

The Environment

No Volatile Organic Compounds (VOCs) are produced in the manufacturing process. StyleLite panels are an inert material, and don't release any emissions to the environment during manufacture or use.

None of the colour pigments used in StyleLite contain heavy metals, such as lead or cadmium. StyleLite is also highly recyclable – making it the best choice for modern, eco-friendly interiors.



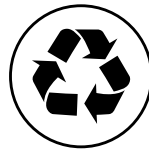
Environmental



Environmental Management System, ISO 14001



Does not harbour bacterial growth



Recyclable



Should we care about “VOCs”?

Yes...We all care about our planet. And “VOCs” are nasty chemicals. Choose a kitchen panel that’s environmentally friendly. Like StyleLite that can’t release any chemicals.

Care and Maintenance

StyleLite products can be cleaned simply using wet microfibre cloth or chamois with non-abrasive soap.

TruGloss’s ultra high gloss finish provides a mirror like appearance which can be refinished using a good quality liquid polish such Vuplex® or Matte Maxx®.

TruMatte’s smooth, untextured finish provides increase scratch resistance over the gloss surfaces and is highly fingerprint resistant. Matte Maxx® is also recommended as a good quality liquid polish for StyleLite TruMatte.

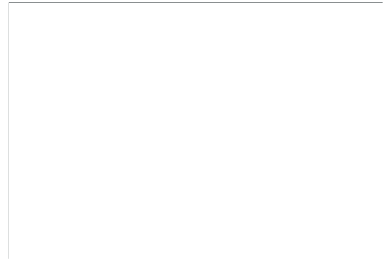


Clean kitchen surfaces in seconds

We know - cleaning is such a chore. StyleLite kitchen panels clean in seconds. Just wipe with a wet cloth. And you're done.

TruGloss - Solid Colour Range

Due to the nature of the printing process, the colours and images depicted throughout this brochure may vary compared to the actual finished products' colour. Images and colours are to be used as a guide only.



Arctic



Alabaster



Ash



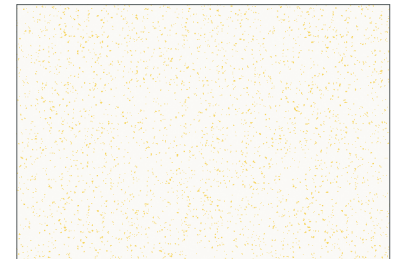
Dove



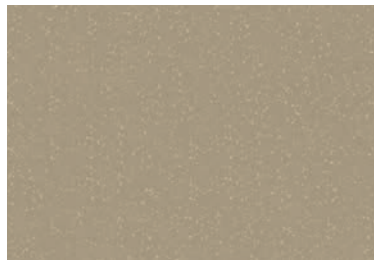
Charcoal



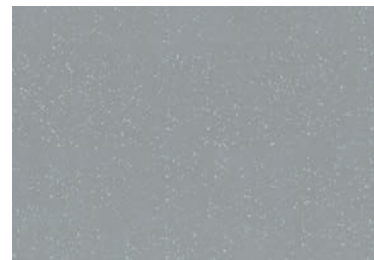
Slate



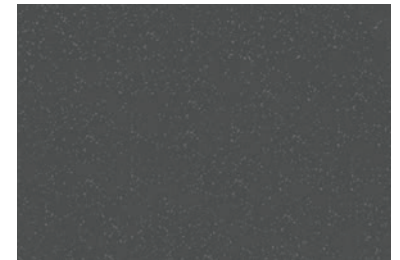
Brilliant Pearl (Metallic)



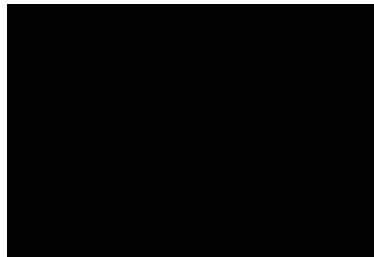
Champagne (Metallic)



Silver (Metallic)



Graphite (Metallic)



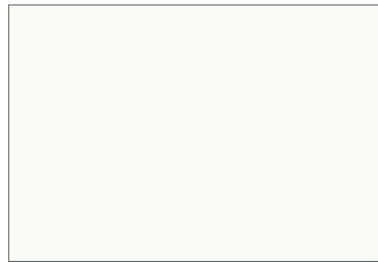
Carbon

Above: Kitchen draws featuring StyleLite Arctic TruGloss cabinetry.

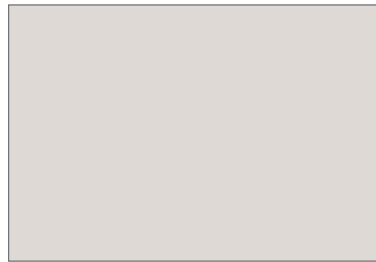
TruMatte - Solid Colour Range



Arctic



Alabaster



Shell



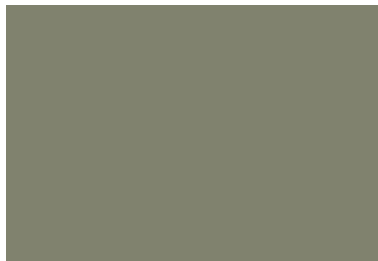
Ash



Mountain



Dove



Rainforest



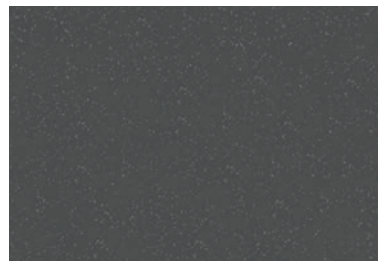
Oceanic



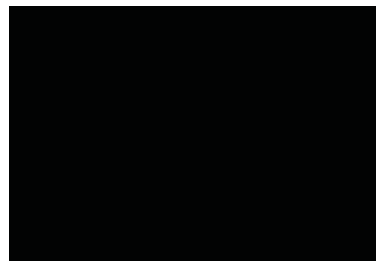
Slate



Charcoal



Graphite (Metallic)



Carbon



Above: kitchen draws featuring StyleLite Carbon TruMatte cabinetry.

Decor Range

Redefining Decorative Solutions

Drawing on a rich and diverse 49-year heritage in the design, manufacture, and marketing of leading-edge products for Australian and international markets, our Decor Range offers designers, fabricators and homeowners a stunning collection of wall and cabinet materials.



Manufactured by:

EGR
DECOR



**Made in
Australia**

PROUDLY DISTRIBUTED BY:



Specialty Range

A specialty range of colours that can be ordered in. Available in both TruGloss and TruMatte, as below. Subject to MOQs.

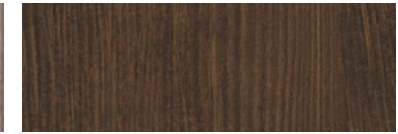
TruGloss



Lavato Oak (Woodgrain)

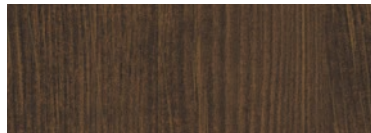


Sienna Teak (Woodgrain)



Tierra Elm (Woodgrain)

TruMatte



Tierra Elm (Woodgrain)



Rustic (Woodgrain)



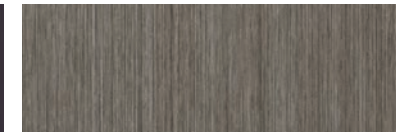
Misty Mira



Wired Mercury






Wired Zinc






Pewter



Calacatta

 Auckland North +64 9 442 4051
 Auckland South +64 9 573 0145
 Hamilton +64 7 850 4900

 Christchurch +64 3 365 7557
 Wellington +64 4 589 0221
 Dunedin +64 3 471 9233

mulfordplastics.co.nz

1. EGR expressly disclaims any representations or warranties of any kind, whether express or implied, as to the accuracy, currency, completeness and/or the merchantability or fitness for a particular purpose of any information contained in or provided via this documentation and/or any service or product described or promoted in this document. 2. It is the customer's responsibility to thoroughly examine the product using a qualified person, to determine whether it is suitable for the application it was purchased for. 3. The receiver of our products is fully responsible to check and to take into account possible third party's patent rights, as well as the existing laws in the country of installation prior to installing our product. 4. No liability may be derived from these images or statements nor from our free technical advice. 5. EGR reserves the right to change, add or remove colours or product without notice. 6. EGR Decor and EGR are registered trademarks. 7. Images and colours should be used as a guide only.

8. 10 Year Indoor Warranty: The EGR Decor warranties cover faulty materials for the periods specified on the relevant product warranty documents. The EGR Decor warranties commence from the date of sale by EGR, they are not transferable and are subject to the terms, conditions and exclusions contained within those warranties.