

# Wall & Door Protection

July 2013



Right to site.

# 10 Complementary Building Products

Nystrom is a global supplier of miscellaneous and specialty construction products.

We partner with our customers to simplify specifying and procurement, minimizing cost and time in the construction project workflow. Our representatives take responsibility for guiding you through the process from beginning to end.

Nystrom is committed to delivering you the right products at the right time. *Right to site.*

## Stair Treads & Nosings

05 55 00



## Roof Hatches

07 72 33



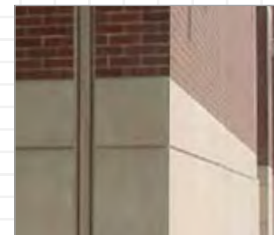
## Smoke Vents

07 72 36



## Expansion Joint Systems

07 95 13



## Access Doors

08 31 00



## Floor Doors

08 31 00



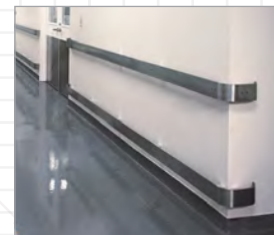
## Louvers

08 91 00



## Wall & Door Protection

10 26 00



## Fire Safety

10 44 13



## Entrance Flooring Systems

12 48 13





Right to site.

*A full line of Wall and Door  
Protection. Right to site.*



Wall & Door Protection is an essential component in any commercial project for preventing damage and safeguarding your building investment. Choose from Nystrom's complete product offering of corner guards, crash rails, handrails, bumper guards, and wall coverings.

## Corner Guards *pg 5-7*

- Stainless Steel
- Vinyl Surface Mount
- Vinyl Recess Mount
- Extruded Vinyl
- Lexan®
- Vinyl Door Frame Guards



## Crash Rails, Bumper Guards *pg 8-10*

- Stainless Steel and Aluminum Crash Rails
- Vinyl Crash Rails
- EnvironWOOD Chair & Crash Rails
- Vinyl Bumper Guards



## Handrails *pg 12*

- Vinyl
- EnvironWOOD



## Wall Coverings *pg 13*

- Stainless Steel
- Vinyl

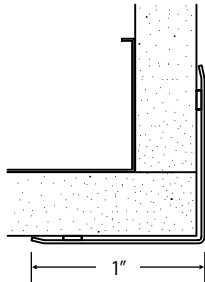
## Color Chart *pg 14-15*

- 50 premium vinyl colors
- 12 EnvironWOOD finishes
- 12 Stainless steel patterns



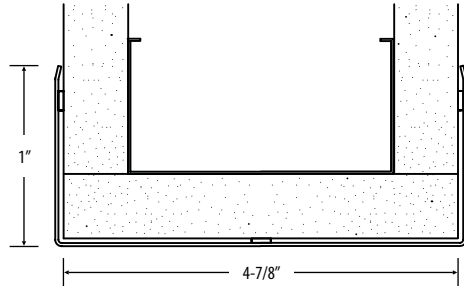
# Stainless Steel Corner Guards

- Modern and attractive appearance
- Surface and recess mount applications
- Mount with either mastic or oval head screws
- Satin finish or one of 11 embossed patterns
- Options include wing size, height, angle, and stainless steel type (#304 or #430)



**Corner Guard**

*CGSS1SA: 1" surface mounted wing, 16 gauge type #304 stainless steel. Also available in type #430 and in a variety of wing sizes*

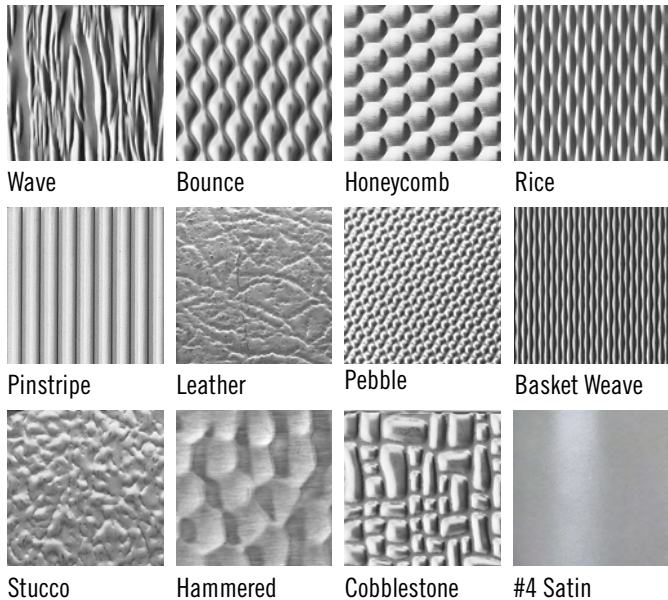


**End Wall**

*CGSS1SA-EW4875: 1" 16 gauge type #304 stainless steel surface mounted wing with 4-7/8" wall width. Also available in type #430 and in wing sizes larger than 1"*

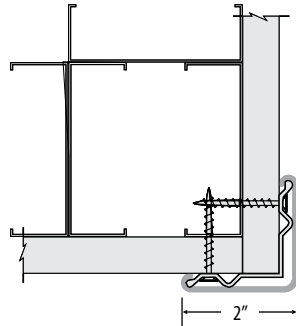
## Patterns

Standard finish corner guards are #4 satin in 16 gauge thickness in either type #304 or #430 stainless steel. Embossed stainless steel is available in type #304 stainless. Thickness varies depending on the pattern.



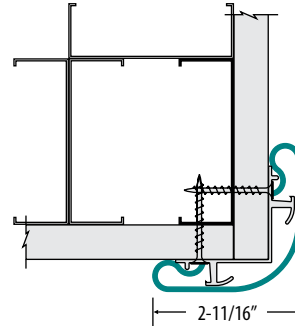
# Vinyl Surface Mount Corner Guards

- Easily installed on new or existing walls
- Class A fire-rated
- Options include 135° radius (3" only), recycled PVC retainers, and end walls



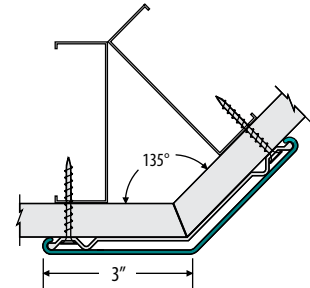
### Standard

*CGVS2S: 2" wing 1/4" radius vinyl cover mounted over continuous retainer. Also available in 3"*



### Bullnose

*CGVS26875B: 2-11/16" wing 1-1/4" radius vinyl bullnose cover for high impact areas*

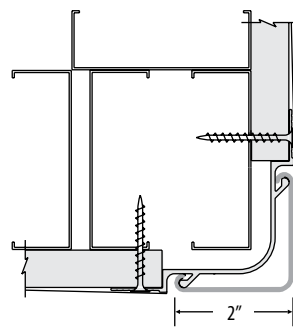


### 135°

*CGVS3S-D135: 3" vinyl 1/4" radius 135° cover mounted over continuous retainer*

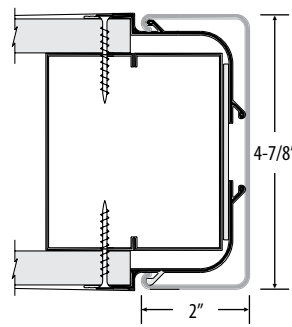
# Vinyl Recess Mount Corner Guards

- Used in new wall construction
- Easily installed from floor to ceiling
- Class A fire-rated
- Aluminum cover base, 4" standard height
- Options include 135° radius (3" only), 2 hr fire barrier (UL listed), and end walls



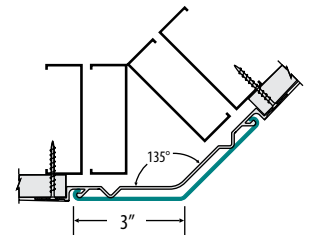
### Standard (2")

*CGVR2S: 2" wing 1/4" radius vinyl cover mounted over continuous retainer. Also available in 3"*



### End Wall

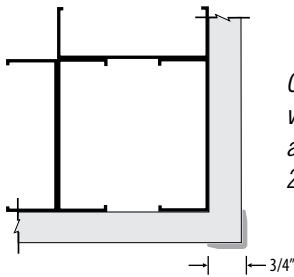
*CGVR2S-EW4875: 2" wing 1/4" radius end wall vinyl cover mounted over continuous retainer*



### 135°

*CGVR3S-D135: 3" wing 1/4" radius 135° cover mounted over continuous retainer*

# Extruded Vinyl Corner Guards

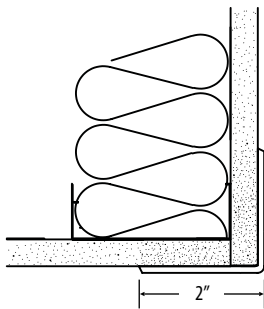


*CGVE75S: .078" thick vinyl with 3/4" wing. Also available in 1-1/2" and 2-1/2" wings*

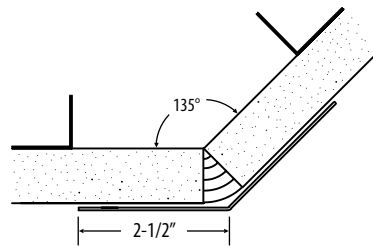
- Economical option for corner protection
- Adhered with tape or glue directly to the wall
- Wings are tapered back for a finished appearance
- Class A fire-rated

# Lexan® Corner Guards

- Clear polycarbonate corner guards
- Economical option for corner protection
- Options include 135° radius (2-1/2" only)

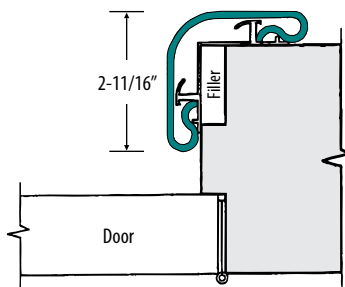


**Standard**  
*CGLS2S: 2" Lexan® wing. Also available in up to 2-1/2"*



**135°**  
*CGLS25S-D135: 2" Lexan® wing with 135° angle. Also available in up to 2-1/2"*

# Vinyl Door Frame Guards

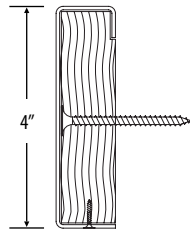


*DGV26875: 2-11/16" wing 1-1/4" radius vinyl cover mounted over continuous aluminum retainer*

- High impact resistance
- Class A fire-rated

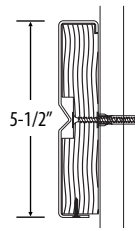
# Stainless Steel and Aluminum Crash Rails

- Modern and attractive appearance
- Satin finish or one of 11 embossed patterns
- Options include material (type #304 stainless steel, #430 stainless steel, or 6063-T5 aluminum alloy)



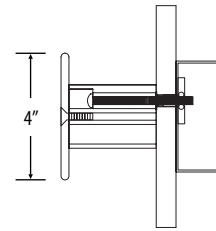
### Standard

*CRSS4: 4" surface mount, type #304 stainless steel. Also available in type #430, 6063-T5 aluminum*



### V-Groove

*CRSE55-BS: 5-1/2" surface mount with V-groove, type #304 stainless steel. Also available in type #430, 6063-T5 aluminum*

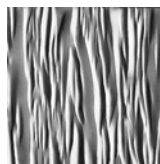


### Extended Mount

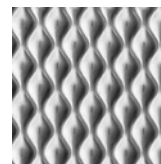
*CRSE4-BS: 4" extended mount, type #304 stainless steel. Also available in type #430, 6063-T5 aluminum*

## Patterns

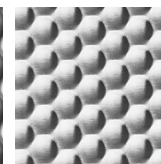
Standard finish crash rails are #4 satin in 16 gauge thickness in either type #430 or #304 stainless steel. Embossed stainless steel is available in type #304 stainless. Thickness varies depending on the pattern.



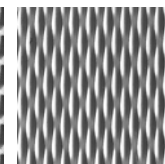
Wave



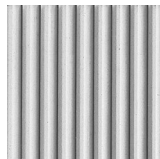
Bounce



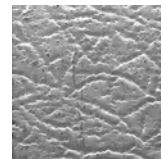
Honeycomb



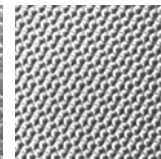
Rice



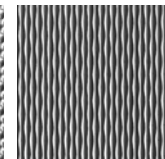
Pinstripe



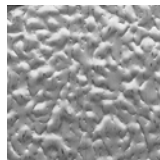
Leather



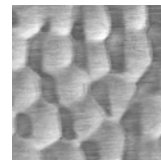
Pebble



Basket Weave



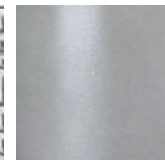
Stucco



Hammered



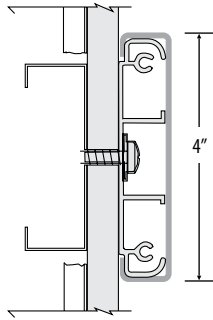
Cobblestone



#4 Satin

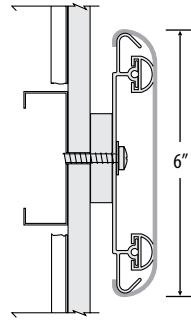


- Versatile horizontal wall protection
- Surface and extended mount applications
- Class A fire-rated
- Options include cushions, extended mount brackets, and accent strip (4", 6", and 8" only)



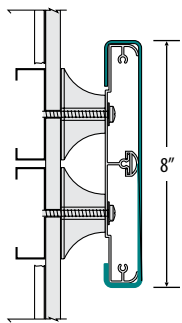
**Standard**

*CRVS4C: 4" vinyl cover over continuous aluminum retainer. Also available in 6" and 8"*



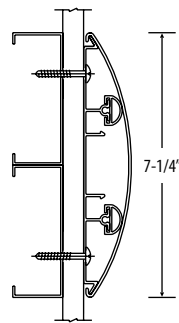
**Cushion**

*CRVS6C-C05: 6" vinyl cover over continuous aluminum retainer, 1/2" cushion. Also available in 4" and 8" cover, 1/8" cushion*



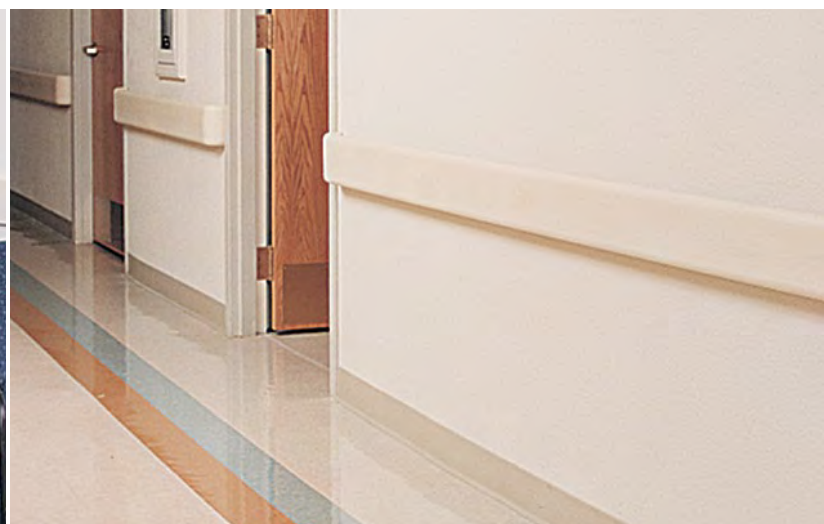
**Extended Mount**

*CRVE8C-B15: 8" vinyl extended mount cover over continuous aluminum retainer, 1-1/2" bracket. Also available in 4" and 6" vinyl, 2" bracket*



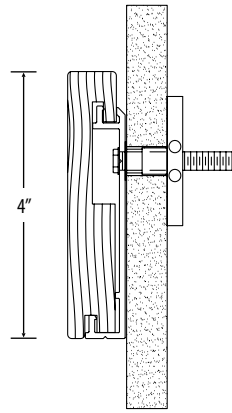
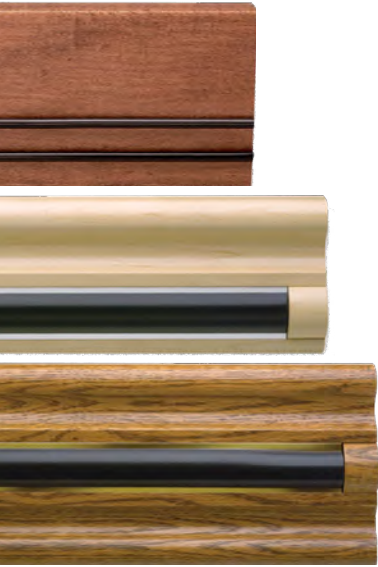
**Crescent**

*CRVS7C: 7" vinyl crescent cover over continuous aluminum retainer. Also available in 5"*

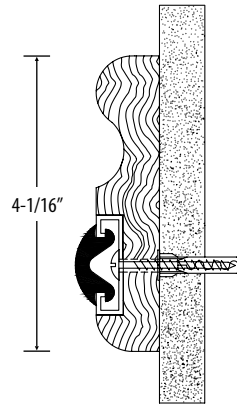


# EnvironWOOD Chair and Crash Rails

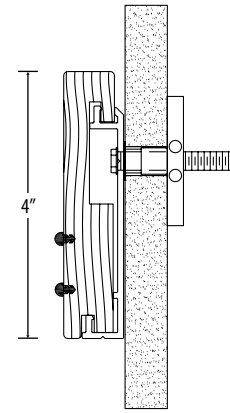
- Warmth and richness of fine hardwoods
- Multiple finishes and stains
- Well-suited for lower abuse applications
- Options include stain, finish, and vinyl bumperettes



**Standard**  
WCRS-4: 4" surface mount



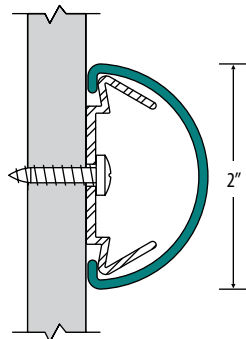
**Bumperette**  
WCRB-4: 4" surface mount with vinyl bumperette



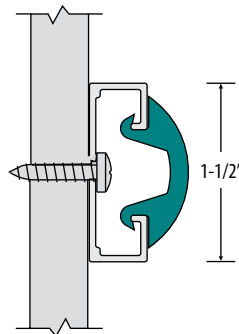
**Dual Bumperettes**  
WCRSBT-4: 4" surface mount with two vinyl bumperettes

# Vinyl Bumper Guards

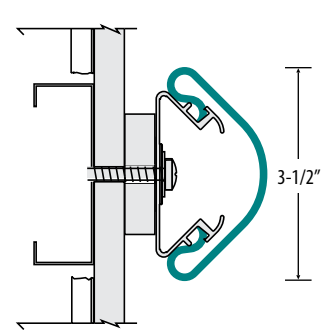
- Class A fire-rated
- Options include cushions and extended mount bracket (3-1/2" only)



**Standard**  
BGVS2C: Surface mount 2" rail with vinyl cover and economical plastic retainer



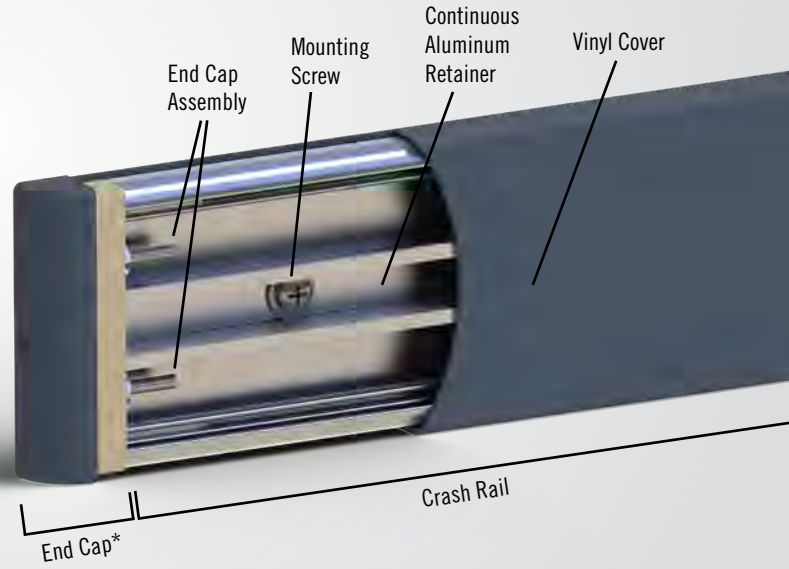
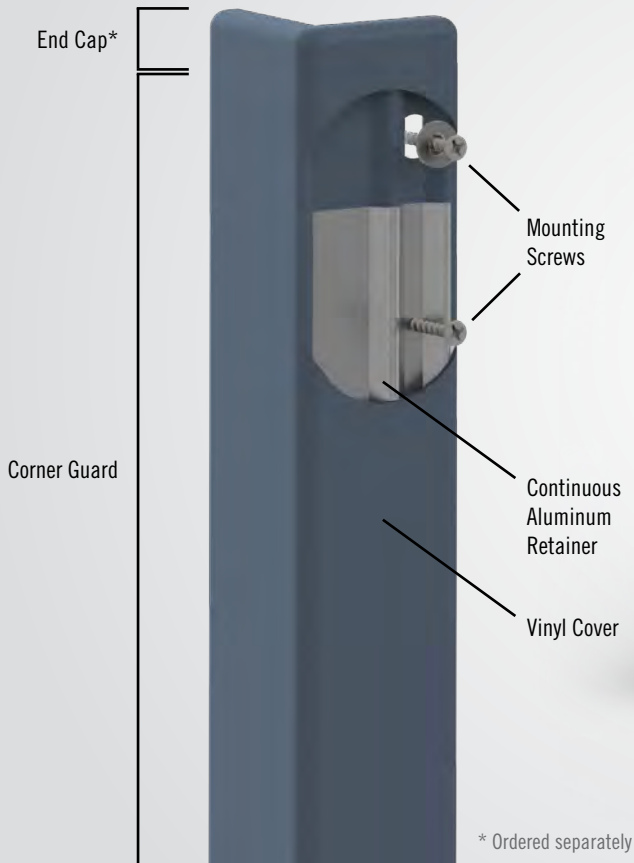
**Rub Rail**  
BGVS15C-RFM: Surface mount 1-1/2" rail with flexible vinyl bumper inserted into continuous aluminum retainer



**Cushion**  
BGVS35-C05: Surface mount 3-1/2" rail with vinyl cover and continuous aluminum retainer



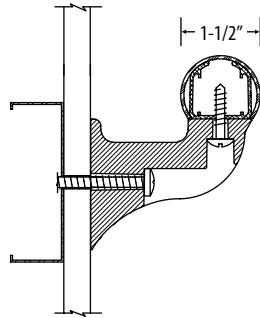
# Inside Wall Protection



# Vinyl Handrails

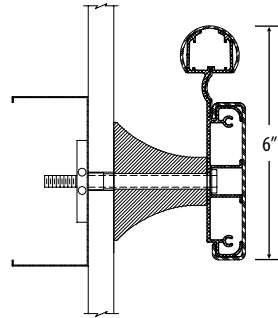
- Continuous aluminum retainer
- Class A fire-rated

- ADA compliant
- Options include accent strip (5-1/2" and 6" only)



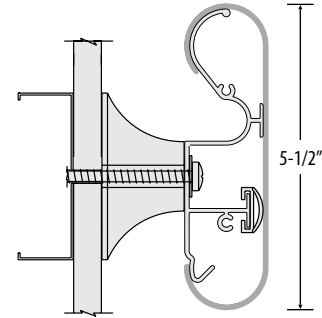
### Standard

*HRVE15: 1-1/2" diameter round hand grip with continuous aluminum retainer*



### Thumb Grip

*HRVE6C: 6" rail with full-length vinyl cover and continuous aluminum retainer. Also available in 5-1/2"*



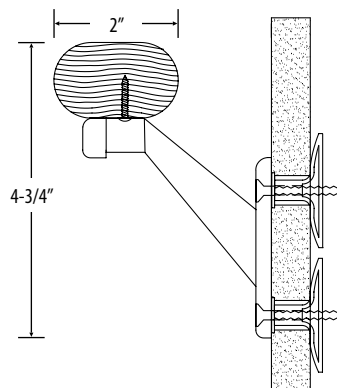
### Accent Strip

*HRVE55C-AS: 5-1/2" rail with full-length vinyl bumper with accent strip and continuous aluminum retainer. Also available in 6"*

# EnvironWOOD Handrails

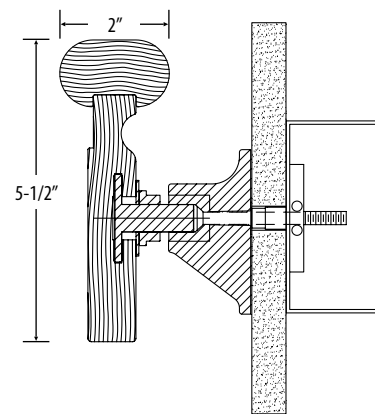
- Warmth and richness of fine hardwoods
- Multiple finishes and stains

- Well-suited for lower abuse applications
- ADA compliant



### Standard

*WHR-20: 2" round hand grip mounted over cast aluminum rail*



### Thumb Grip

*WHRO-55: 5-1/2" extended mount wood with 1-1/4" round thumb grip*



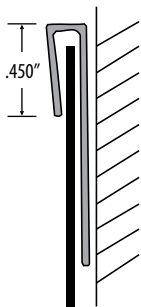
# Stainless Steel Wall Coverings

- Well-suited for clean rooms and food service areas
- High impact capacity
- Simple cleaning and maintenance
- 16 gauge type #304 stainless steel



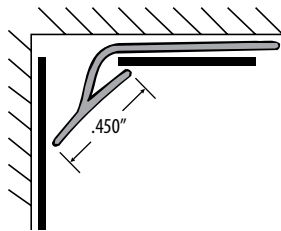
# Vinyl Wall Coverings

- Protects medium to high abuse areas
- Manufactured with color throughout the thickness of the sheet to hide dents and scratches
- Chemical and stain resistant
- Complete set of finishing features
- Options include thickness (.028", .040", and .060") and form (4'x8' sheet or 4'x120' roll)



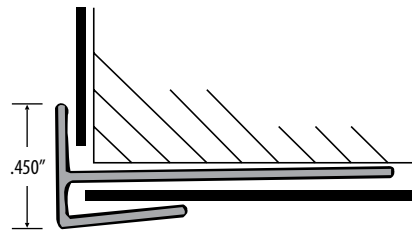
**J Molding**

WCV-MJM: 10' long vinyl J-molding



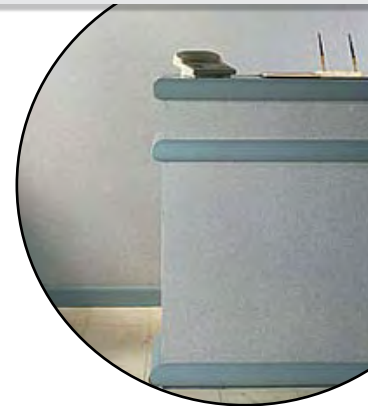
**Inside Corner**

WCV-MIC: 10' high vinyl inside corner



**Outside Corner**

WCV-MOC: 10' high vinyl outside corner



# Vinyl Color Chart



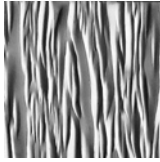
|            |         |            |                |           |           |          |
|------------|---------|------------|----------------|-----------|-----------|----------|
|            |         |            |                |           |           |          |
| White      | Linen   | Cream      | Delicate White | Pearl     | Ivory     | Tan      |
|            |         |            |                |           |           |          |
| Dark Cream | Peach   | Wheat      | Beige          | Silk      | Bamboo    | Cashmere |
|            |         |            |                |           |           |          |
| Suede      | Sand    | Mocha      | Brown          | Toffee    | Tucson    |          |
|            |         |            |                |           |           |          |
| Oyster     | Shark   | Khaki      | Soda           | Pumice    | Mist      |          |
|            |         |            |                |           |           |          |
| Tumbleweed | Gravity | Fudge      | Caramel        | Nutmeg    | Coffee    |          |
|            |         |            |                |           |           |          |
| Stone      | Lava    | Soap       | Landscape      | Sea Green | Sage      |          |
|            |         |            |                |           |           |          |
| Dew        | Air     | Aqua       | Sky            | Rain      | Dark Blue |          |
|            |         |            |                |           |           |          |
| Navy       | Fog     | Dark Stone | Gray           | Charcoal  | Black     |          |

Colors above are only approximations. Contact us for samples.

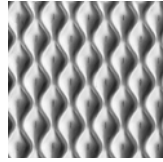
Download Drawings, CAD, Spec, and LEED documents at [Nystrom.com](http://Nystrom.com)

# Stainless Steel Patterns

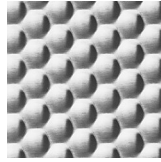
The #4 satin finish comes standard in 16 gauge thickness for both type #304 and #430 stainless steel. Embossed stainless steel is available in type #304 stainless. Thickness varies depending on the pattern.



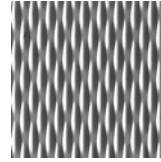
Wave



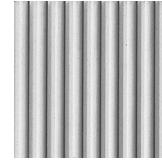
Bounce



Honeycomb



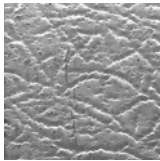
Rice



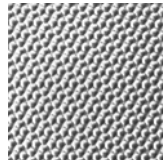
Pinstripe



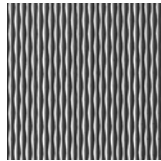
Cobblestone



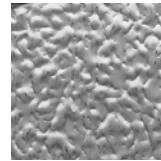
Leather



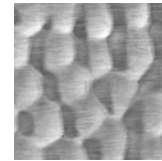
Pebble



Basket Weave



Stucco

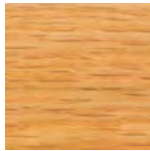


Hammered



#4 Satin

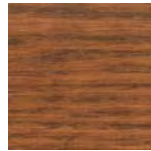
# EnvironWOOD Finishes



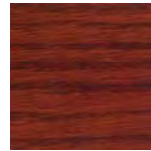
Oak - Natural



Oak - Honey



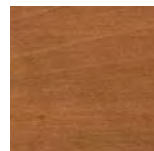
Oak - Walnut



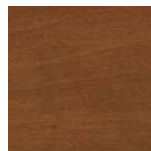
Oak - Cherry



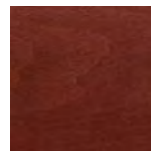
Maple - Natural



Maple - Honey



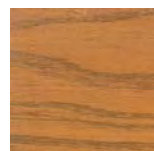
Maple - Walnut



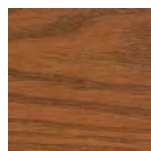
Maple - Cherry



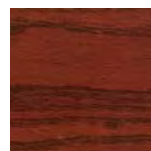
Ash - Natural



Ash - Honey



Ash - Walnut



Ash - Cherry

Choose from our 12 gorgeous hardwood finishes to add warmth and richness to your interior. Our collection of responsibly harvested wood includes oak, maple, and ash varieties.

Custom finishes are also available.





# 10

## **Complimentary Building Products. Right to site.**

- 05 55 00* Stair Treads & Nosings
- 07 72 33* Roof Hatches
- 07 72 36* Smoke Vents
- 07 95 13* Expansion Joint Systems
- 08 31 00* Access Doors
- 08 31 00* Floor Doors
- 08 91 00* Louvers
- 10 26 00* Wall & Door Protection
- 10 44 13* Fire Safety
- 12 48 13* Entrance Flooring Systems

Nystrom.com  
800.547.2635

9300 73rd Avenue North  
Minneapolis, MN 55428



Right to site.