

POINT FIX SLIDING SYSTEM

AVAILABLE FINISH

- Satin stainless steel

SS1 Tube top rail

TECHNICAL DETAILS

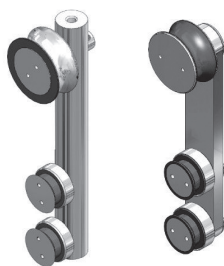
Cut to size per 1M
Includes 2 ends caps



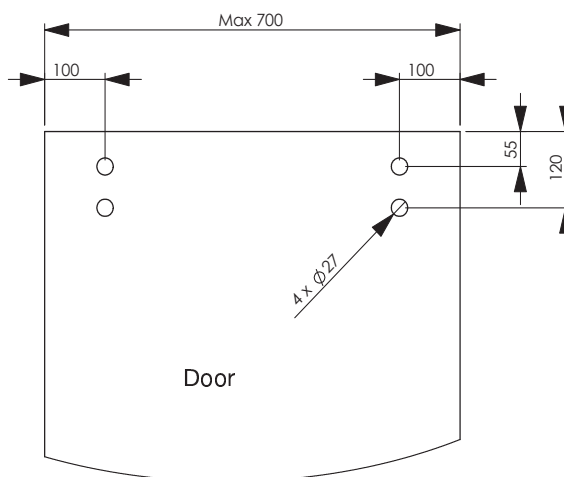
SS3R/SS3F Glass hanger, round bar/flat bar

TECHNICAL DETAILS

Two required per door
Adjustable to suit 10mm and 12mm glass



Glass detail



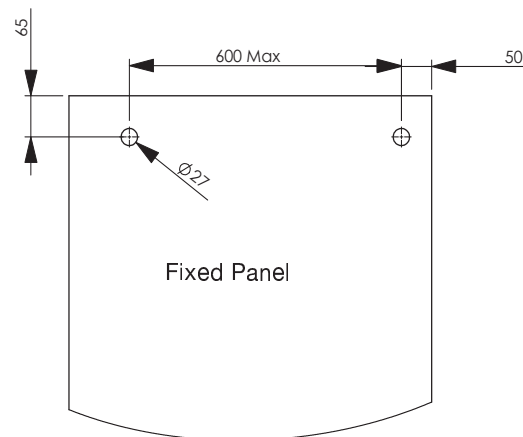
SS4 Wall anchor for SS1 tube



SS5 Glass mount clamp



SS6 Wall mount clamp



SS7R Stop

TECHNICAL DETAILS

SS7R = Round with spring stop
SS7FL = Flat stop (left hand)
SS7FR = Flat stop (right hand)



SS7R



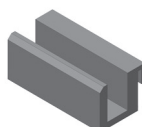
SS7FL or SS7FR

(please specify left or right; left hand shown)

SSG10 Floor guide

TECHNICAL DETAILS

For 10mm glass
Clips on to the channel
No fixings required



SS9 Sliding door finger pull

TECHNICAL DETAILS

Glass hole size 48mm
58mm o/a dia
Fits 8mm and 10mm glass



SS8 Floor guide

TECHNICAL DETAILS

Adjustable to suit 8mm, 10mm
or 12mm glass
Base thickness is 6mm

