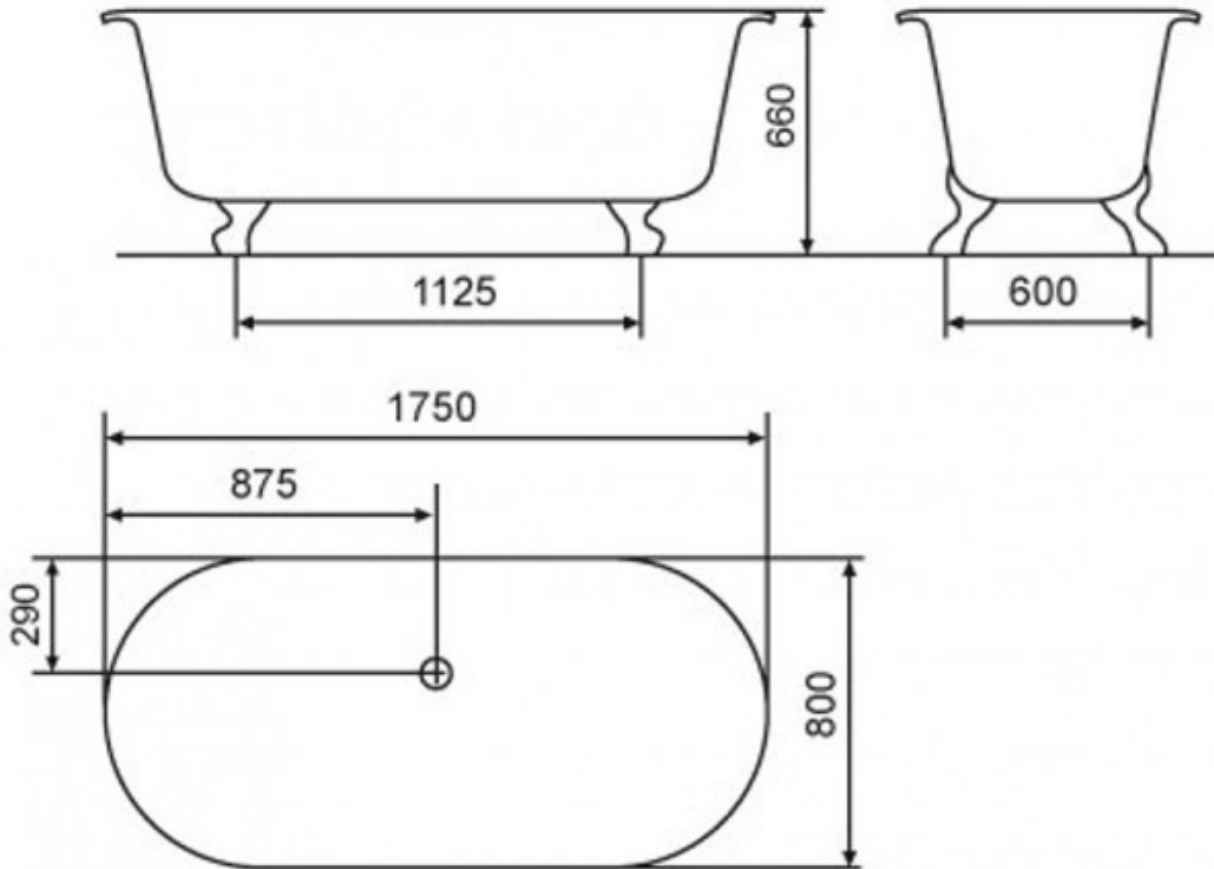









CHESHIRE QUARRYCAST FREESTANDING BATH 1750 X 800 X 660
INCL QUARRYCAST FEET

victoria ⊕ albert®

52023.10
\$3319.00



	Guarantee	25 Year Guarantee
	Dimensions	1750 (L) x 800 (W) x 660 (H)mm
	Residential Use	Suitable for Residential/Light Commercial Use (Kitchens, Bathrooms and Laundries in Motels, Hotels and Retirement Villages)
	Commercial Use	Suitable for commercial use.
	Capacity	273 Litres
	Outdoor Use	Can be installed inside or outdoors.
	Quarrycast	QUARRYCAST® material is made from a finely ground volcanic limestone and resin mix. 100% one piece, hand finished and packed with naturally desirable properties.





Exterior Painting

Exterior can be painted or personalised.



Weight

57KG



Cleaning
Recommendations

We recommend any non-abrasive bathroom or kitchen cleaner however care should be taken with some products as they can damage the metal drain parts inside the bath. Abrasive cleaning products will cause the disappearance of the gloss finish over time.



British owned and
operated



Made in South Africa

A timeless classic - this deep claw foot Victorian double ended roll top bath is of generous proportions. Traditional, yet equally at home in a contemporary bathroom.