

# ROOFING SOLUTIONS

ROOFING, CLADDING AND RAINWATER SYSTEMS > PRODUCT CATALOGUE



JAN 2022

> **0800 427 663**  
[www.steelandtube.co.nz](http://www.steelandtube.co.nz)





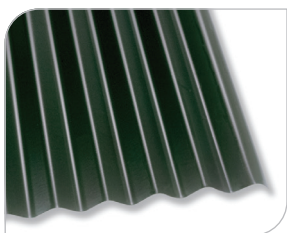
# ROOFING



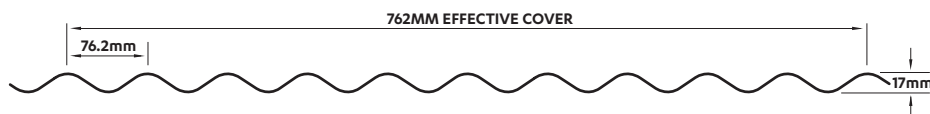
## CORRUGATED

**Corrugated** roofing offers the timeless elegance and matchless adaptability of the traditional corrugate profile.

Manufactured in Whangarei, Auckland, Hamilton, Tauranga, Wellington and Christchurch.



### CUSTOM ORB®



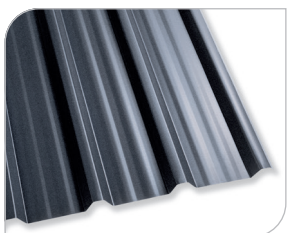
## TRAPEZOIDAL

**Trapezoidal**, or rib, profiles have sloping-sided ribs and are fastened through the profile. They are available in a number of configurations to suit a vast range of performance and appearance criteria.

They can be categorised by common application into Residential/Commercial and Commercial/Industrial groups.

### RESIDENTIAL AND COMMERCIAL PROFILES

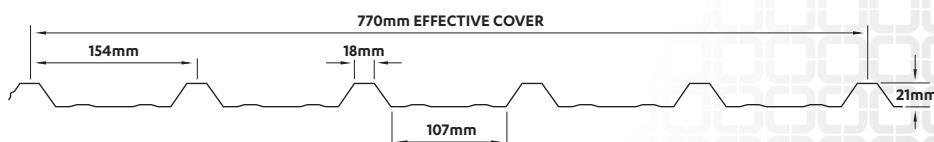
Steel & Tube offer four **Trapezoidal** rib products with rib heights varying between 20mm and 30mm. These are typically utilised in domestic roofing, or for commercial roofing and cladding applications where spanning ability is not a prime requirement.



### SIX RIB

Manufactured in Tauranga

**Six Rib** has a more subtle rib and wider pan, for an attractive, economical solution to most domestic roofing applications.

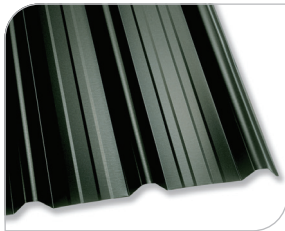
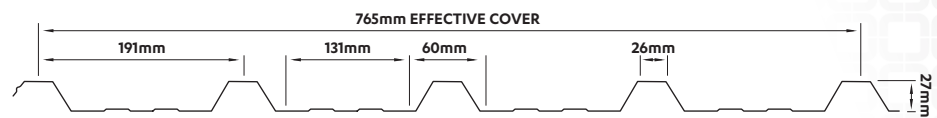


Because both **Plumbdek®** and **Trimform®** profiles feature a strong rib design, they are equally at home in residential applications or at work in commercial situations.



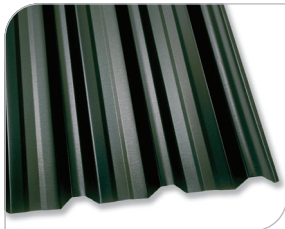
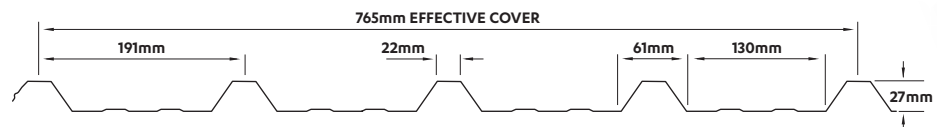
### PLUMBDEK®

Manufactured in Auckland, Tauranga & Christchurch



### TRIMFORM®

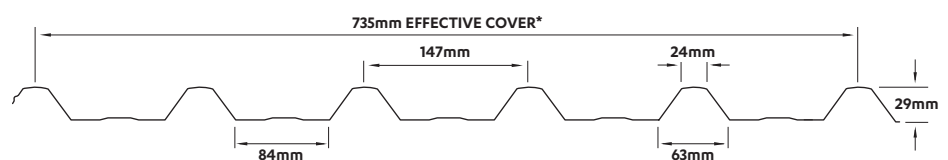
Manufactured in Hamilton



### TRIMLINE®

Manufactured in Auckland, Whangarei & Wellington

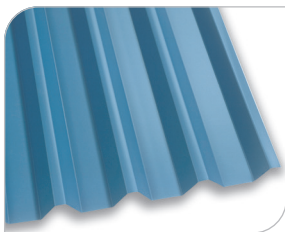
**Trimline** has six bold ribs making it an exceptionally attractive roofing and cladding profile.



**\* Note:** Regional variances can occur with different base materials and thicknesses. If cover is crucial, please discuss with Steel & Tube prior to ordering.

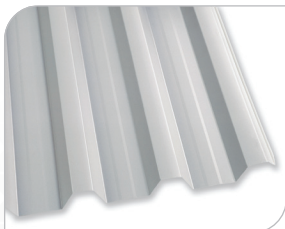
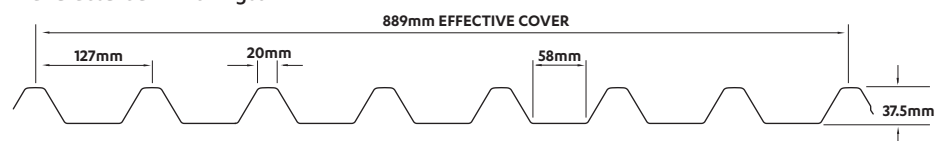
## COMMERCIAL/INDUSTRIAL PROFILES

Where larger spans or greater robustness is required, the higher-ribbed trapezoidals make their mark. **ST7®** and **ST900®** have medium height ribs, giving a bolder look for residential applications and for commercial and industrial work.



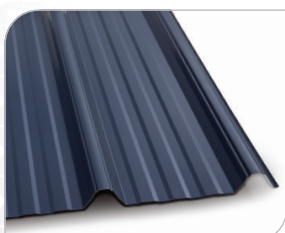
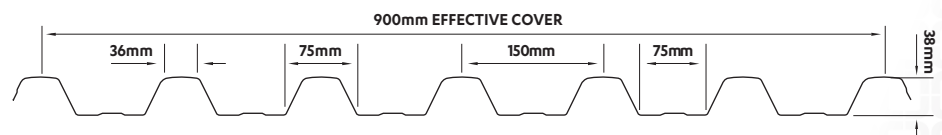
### ST7®

Manufactured in Wellington



### ST900®

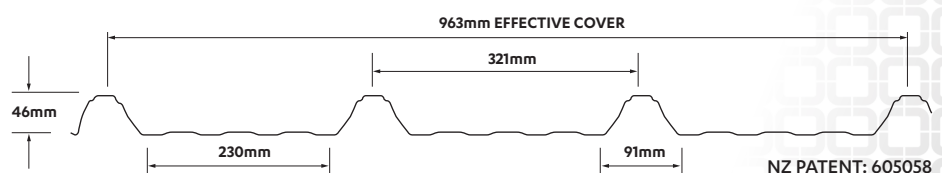
Manufactured in Auckland and Christchurch



### ST963

Manufactured in Auckland & Christchurch

**ST963** is a profiled metal roofing and cladding profile with four trapezoidal ribs of 46mm in height and a 230mm wide pan.



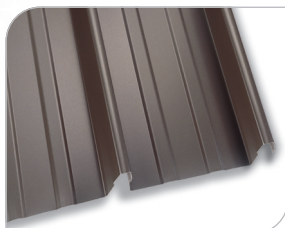




## TROUGH SECTION

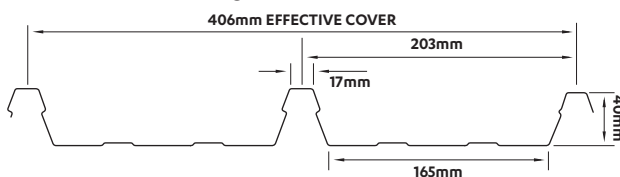
Steel & Tube's trough section profiles are designed to meet a variety of needs from low pitch and long lengths to steep pitches where the clean lines are enhanced by the secret fixings.

In some cases indentations from the clips may be noticeable although this should become less noticeable with weathering over time.



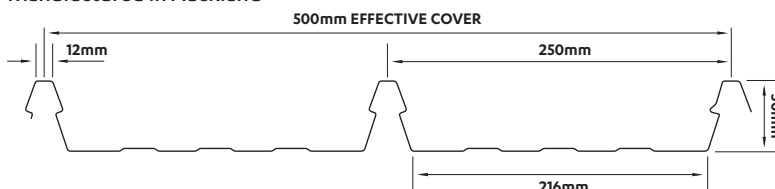
### KLIPLOK

Manufactured in Wellington



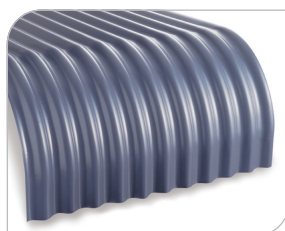
### HI RIB

Manufactured in Auckland



## CURVED

Steel & Tube is equipped to precurve corrugate and three trapezoidal profiles in residential or commercial designs where radii exceed the limits for drape or spring curving. Guidelines on **Spring Curving** are available from your nearest Steel & Tube roofing branch.



### CORRUGATE

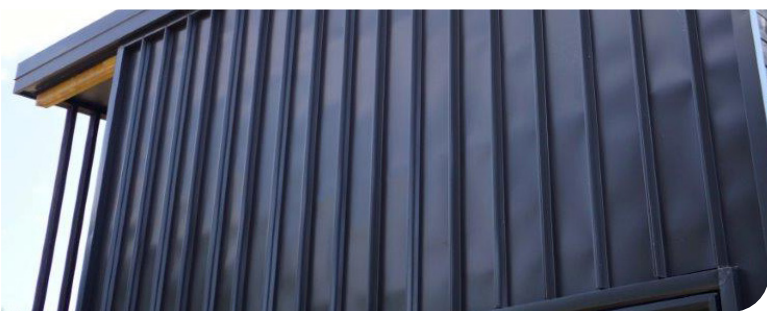
**Custom Orb®** may be roll curved to the fashionable barrel roll or to the tighter, more traditional bullnosing; both requiring a special grade of material which may need to be ordered in advance.



### CRIMP CURVED

**Trimline®, Plumbdek®, and ST900®** can be crimp curved down to a minimum radius of 400mm.



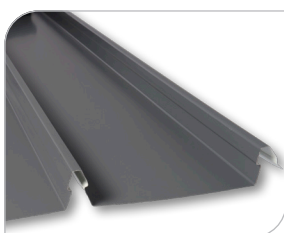


## LEGACY®

**LEGACY®** has been specifically introduced to complement our EuroLine range of roofing products, with their unmistakable eighteenth century standing seam roofing style.

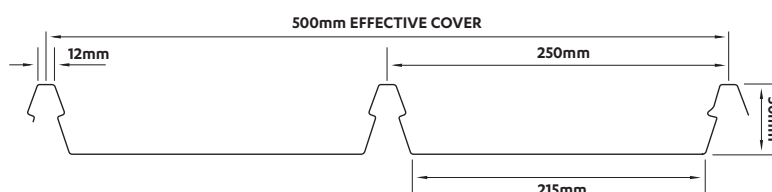
It incorporates modern high strength roll forming technology and is available in continuous lengths.

It is important to note that an architectural feature of this product is the undulation of the wide flat pan of the profile. In some situations, indentations caused by fixing clips or purlins may be noticeable although this should become less apparent with weathering over time.



### LEGACY®

Manufactured in Auckland



## EUROLINE®

**Euroline®** is an elegant descendant of eighteenth century standing seam roofing.

**Euroline®** is obtainable in two profiles: **Battenlok** and **Seamlok**. Standard pan widths are typically 500mm, but 300mm or 400mm can also be supplied.

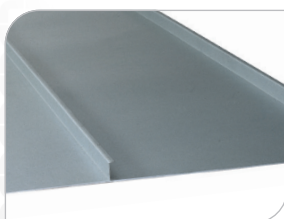
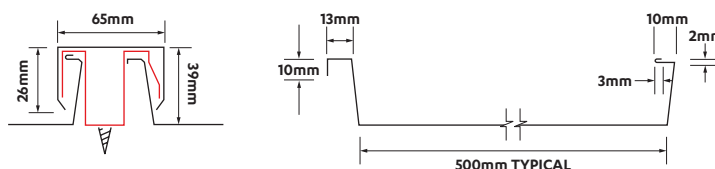
For wall cladding, **Seamlok** is the recommended profile.

It is important to note that an architectural feature of this product is the undulation in the wide flat pans. In some situations marks made by the fixing clips may be noticeable although this should become less apparent with time.



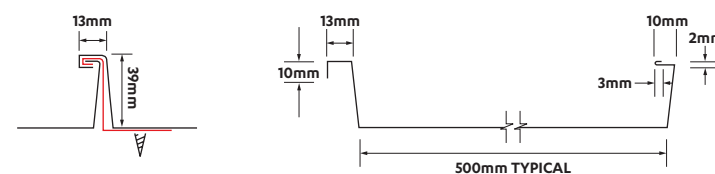
### BATTENLOK

Manufactured in Auckland and Christchurch



### SEAMLOK

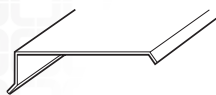
Manufactured in Auckland and Christchurch



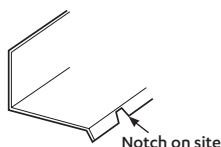


## COMMON FLASHINGS

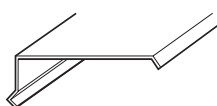
**KICK OUT BARGE**



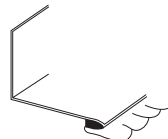
**NOTCHED APRON**



**BIRDS BEAK BARGE**



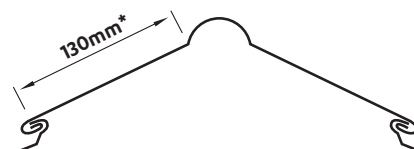
**SOFT EDGE APRON**



**SOFT EDGE HEAD BARGE**

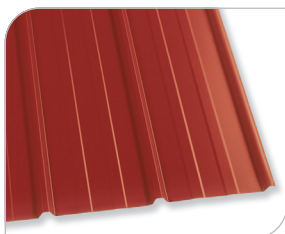


For corrugate barges, your supplying branch may have dimensions standard for their area. Dimensions for other profiles dimensions should be specified by the installer. Internal angles on soft edge or notched barge or apron also need to be specified.



\*200mm wide cover ridge is also available.

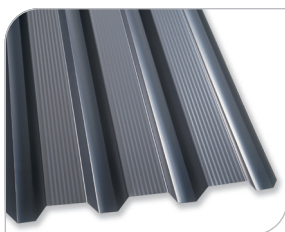
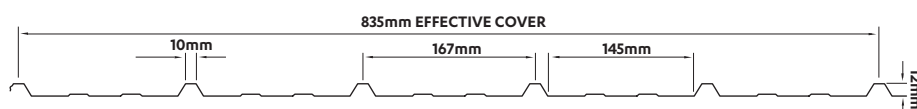
## WALL CLADDING



### TRIMKLAD®

Manufactured in Hamilton

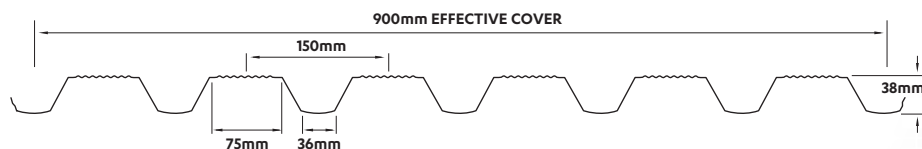
Trimklad® has an unobtrusive rib and a very wide swaged pan for any installation where a neat appearance and lower labour costs are an essential design criteria.



### STC900®

Manufactured in Auckland

STC900® is specially designed for pan-out wall cladding or canopies where the normal underside of the profile is exposed to view. Fine flutes in the face highlight the surface and accentuate the negative detail, while modifications to the side lap detail means that weatherproofness and good looks are maintained on both sides of the profile.







# RAINWATER SOLUTIONS



## TRADITIONAL

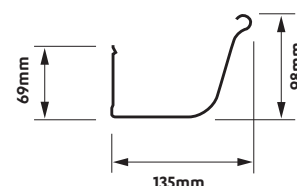
### CUSTOMLINE®

Manufactured in Tauranga

- **Customline®** is a larger, long run version of the classic quarter round, and is deeper than other designs, for greater water carrying capacity and enhanced aesthetic appeal.
- **Customline®** can be fitted with fully concealed brackets to enhance the clean smooth lines or with external brackets, for a timeless classic look.

#### CROSS SECTIONAL AREA

7100mm<sup>2</sup>



## CONTEMPORARY

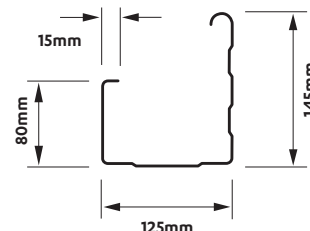
### PLUMBLINE®

Manufactured in Auckland

- **Plumblime®** provides a large capacity domestic spouting which is also at home on smaller commercial work.
- **Plumblime®** has a strong profile with a double swaged face and swaged base.
- **Plumblime®** is fixed using concealed clips for emphasis of its bold lines.

#### CROSS SECTIONAL AREA

10000mm<sup>2</sup>



## COMMERCIAL GUTTERS

Manufactured in Whangarei, Auckland, Hamilton, Tauranga, Wellington and Christchurch

The most commonly specified commercial gutters are 175mm and 300mm, however, as each is specifically folded, the dimensions can be varied greatly to suit any application, provided appropriate fixing brackets are sourced.

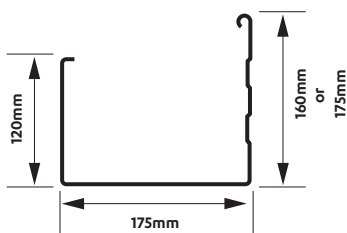
Standard pressed internal brackets are available for the 175 gutter, however for extra strength, specially fabricated steel external brackets are recommended (colour matched if required).

Steel & Tube provides details regarding industrial gutter bracket design and placement, available from our website [www.steelandtube.co.nz](http://www.steelandtube.co.nz).

### COMMERCIAL GUTTERS TYPICALLY AVAILABLE IN 175mm AND 280mm-300mm WIDTHS

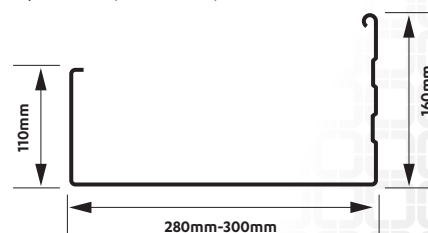
#### CROSS SECTIONAL AREA

21,000mm<sup>2</sup>



#### CROSS SECTIONAL AREA

31,350mm<sup>2</sup> (285mm width)



#### Note:

Dimensions are indicative only. There may be differences in dimensions between regions. Please contact your local Steel & Tube branch for more information.





## FASCIA SYSTEMS

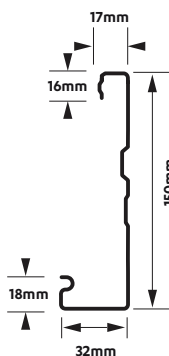
### MULTI-LINE® FASCIA

- An attractive and economical advance over timber fascias, **Multi-line® Fascia** can be fitted with a range of spoutings for contemporary or traditional appearances.

Steel & Tube's fascia systems are available exclusively through qualified installers.

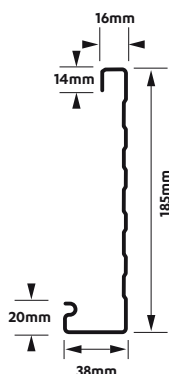
### MULTI-LINE® FASCIA 150

Manufactured in Tauranga



### MULTI-LINE® FASCIA 185

Manufactured in Wellington and Christchurch



**BIM-spec™** is a one stop portal for all Steel & Tube's specification and technical content. It provides access to a large library of 2D and 3D CAD content and building information models (BIM) across a wide range of Steel & Tube product categories. This includes manufacturer-specific and generic libraries suitable for all specifiers, consulting and fabrication engineers and specialist consultants/contractors.

The BIM-spec portal can be accessed through our website [www.steelandtube.co.nz](http://www.steelandtube.co.nz)



#### Trademark Note:

*CUSTOM ORB* is a registered trademark of BlueScope Steel Limited.

*Multi-line, ST7, ST900, Trimklad, STC900, Plumbdek, Trimform, Trimline, Euroline, Plumblin, Legacy* are registered trademarks of Steel & Tube Holdings Limited.

*The ST963 profile* is a registered patent - New Zealand Patent Number: 605058.