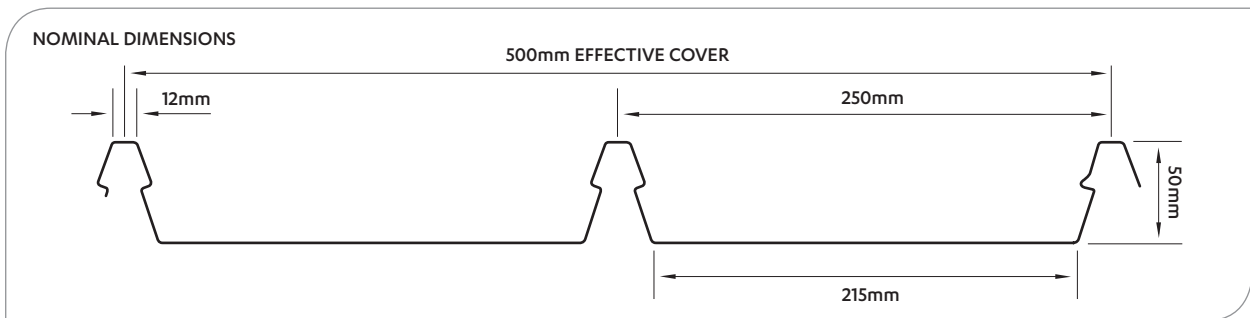


PRODUCT TECHNICAL STATEMENT  
**LEGACY**

✦ *Profiled Metal Roofing and Cladding*



**DESCRIPTION**

**LEGACY** has been specifically introduced to complement our EuroLine range of roofing products, with their unmistakable eighteenth century standing seam roofing style. It incorporates modern high strength roll forming technology to eliminate the need for supporting plywood substrate and is available in continuous lengths.

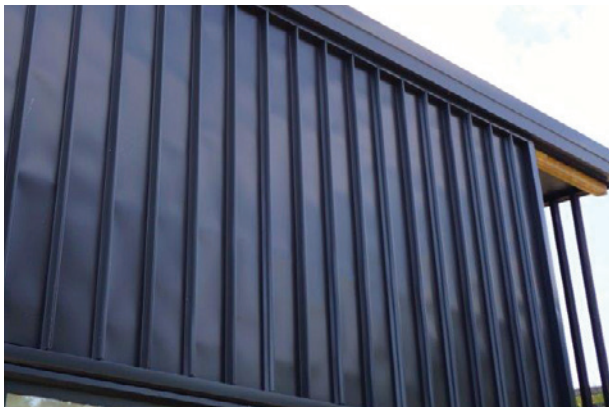
An architectural feature of this profile are the undulations in the wide flat pan, which can be expected in this type of roof profile. In some situations indentations caused by the fixing clips or purlins may be noticeable although this will become less apparent with weathering over time.

**SCOPE OF USE**

**LEGACY** is a concealed clip fixed trough section roof and wall cladding suitable for:

- Roof cladding down to a minimum pitch of 3°
- Vertical wall cladding installed over a drained cavity
- Installation to supports at 600mm spans on buildings within the scope of NZS 3604

Use outside of the stated scope of use is subject to Special Design in consultation with Steel & Tube.



**LEGACY** used for a cladding application. The undulations in the wide flat pan are to be expected.

**MATERIALS**

**LEGACY** is available in 0.55mm BMT COLORSTEEL®. For other materials please contact Steel & Tube on 0800 333 247 to discuss.

**STATEMENT OF CODE COMPLIANCE**

**LEGACY** will comply with the following clauses of the New Zealand Building Code:

**B1 – STRUCTURE**

When fastened to supports at maximum of 600mm centres with one **LEGACY** clip per sheet per support with two screws per clip, **LEGACY** will withstand wind loads of up to Extra High Wind Zone as determined by NZS 3604: 2011.

**B2 – DURABILITY**

When the base material is used in accordance with Table 20 of E2/AS1. In Severe Marine environments eaves clips to be Thermoplastic Powder Coated Galvanised or Stainless Steel 304 as appropriate for the cladding material.

**E2 – EXTERNAL MOISTURE**

When design principles contained in E2/AS1 for trough section cladding are applied. Steel & Tube recommend details which incorporate concealed fixing methods to minimise the use of exposed fasteners.

## FASTENERS

Typically fastened with a Zinalume® or Galvanised steel bracket with two 10gx45mm wafer head Timberfix® screws into timber purlins or two 10gx16mm wafer head Steelfix® screws into steel purlins. When fastening through a non-structural building member such as cavity battens, sarking or thermal breaks, increase the screw length to ensure a minimum of 30mm penetration into timber structure or three full screw threads to clear through a steel support.

## WARRANTY PLUS

Steel & Tube **WarrantyPlus** is the most comprehensive warranty available in the industry. **WarrantyPlus** covers an extended range of performance criteria, is supported back to back by our suppliers, includes site specific maintenance requirements and is transferable to subsequent owners.

## FOOT TRAFFIC

Foot traffic must take place over purlin lines.

## SPECIFICATIONS

Recommended specifications are available in the roofing section of our website: [www.steelandtube.co.nz](http://www.steelandtube.co.nz)

## DESIGN DETAILS

To complement the clean lines of **LEGACY** and enhance weather tightness, the use of concealed fixing methods are recommended for flashings.

For specific advice on details contact the Steel & Tube technical helpline on 0800 333 247.

## PUBLICATIONS

For your installation to perform to its potential, it is important that it is designed, installed and maintained in accordance with good trade practice. Please refer to:

- MRM Code of Practice
- E2/AS1
- New Zealand Steel's Specifiers and Builders Guide
- New Zealand Steel's Installers Guide
- BRANZ: Good Practice Guide Profiled Metal Roofing
- BRANZ: Good Practice Guide Profiled Metal Wall Cladding

## INSTALLERS

A list of local installers for your area is available from your local Steel & Tube branch or on our website: [www.steelandtube.co.nz](http://www.steelandtube.co.nz)

### Note:

Trademarks apply to the following products presented in this publication:  
Zinalume, Timberfix, Steelfix, Colorsteel.