

Pacific Non-Fire Rated Interconnecting

Issue date: 6/26/25

Page 1 of 4

DESCRIPTION

Pacific Doors offer a range of interconnecting door sets that provide a higher acoustic performance than a single door set can provide. These door sets are tested acoustic interconnecting door sets designed to reduce sound transmission within buildings.

For further information on this product, visit:

<https://www.pacificdoors.co.nz/products/acoustic/acoustic-doors/non-fire-rated-interconnecting>

PRODUCT FEATURES:

Product features:

- Up to STC 61 acoustic rating
- Single leaf only
- 6 frame options
- Suitable for interior use only
- Compatible with timber stud, steel stud and masonry wall
- Certified acoustic performance to ISO 140-3

PRODUCT OPTIONS

The thickness of each door leaf is 47mm with an approximate leaf weight of 24kg/m².

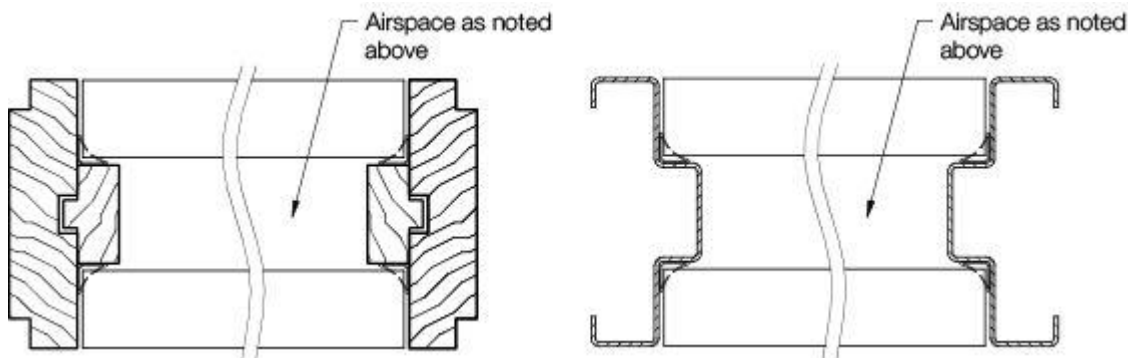
Door Type	Frame Type	Space Description	Acoustic Rating	Max Leaf Height (mm)	Max Leaf Width (mm)
AD200-48ID	Common Frame	65mm airspace between door leaves	STC/Rw 48	2700	1200
AD200-58ID	Separate Frame	160mm airspace between door leaves	STC/Rw 58	2700	1200

AD300-ID	Separate Frame	160mm airspace between door leaves	STC/Rw 61	2700	1200
----------	----------------	---	-----------	------	------

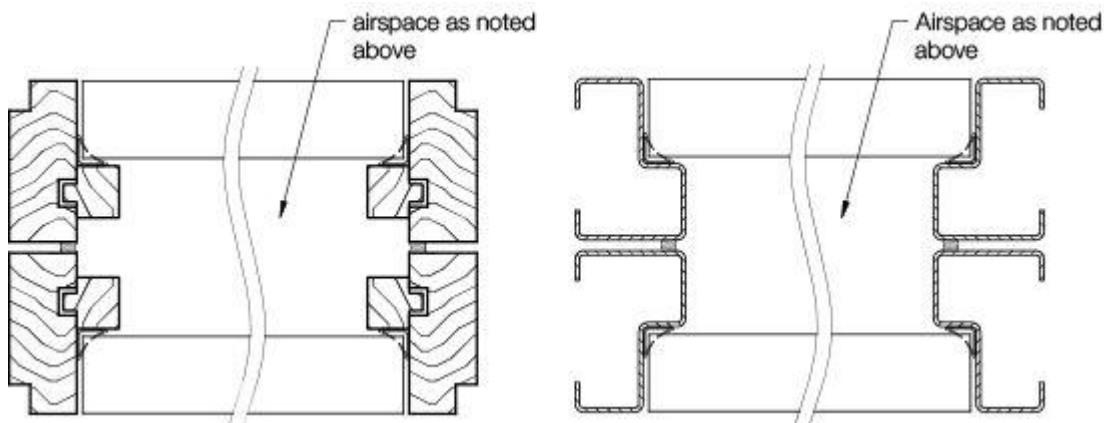
Notes:

1. Please note that the maximum leaf width shown above is measured per door leaf.

Common Frame



Separate Frame



Wall Types

Door sets must be installed carefully with particular attention to the sealing of gaps, including around the frame to wall junction.

Leaf Facings

The facings listed below are available for these door sets

- MDF
- Timber Veneer
- HPL decorative laminate (e.g. Formica)

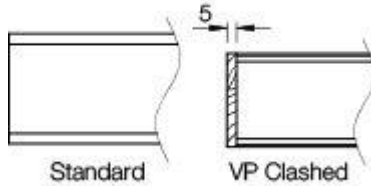
Notes:

1. Other facings may be available, please contact Pacific Doors to discuss further options.

Leaf Edges

Paint-quality doors have unclashed edges.

Timber veneer faced doors are clashed on the vertical edges with solid timber.



Meeting Stiles

This door set is not available as a pair.

HARDWARE AND SEALS

Seals

The perimeter frame seals are self-adhesive seals mounted in the frame rebate, so are hidden when the door is closed.

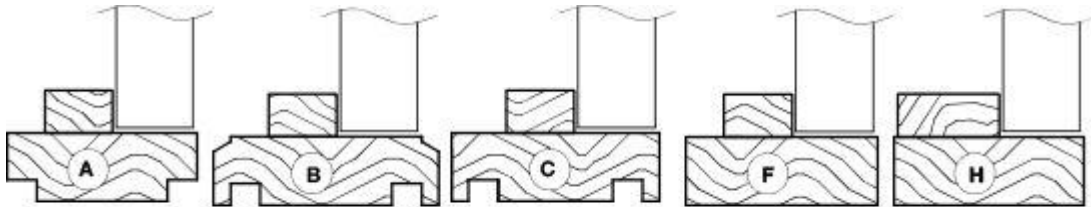
The bottom seal (Type L) is an automatic door seal that lifts clear of the floor when the door is opened. The seal is fully mortised in a groove in the bottom edge of the door.

The bottom seal must close onto a smooth, flat and level surface in order to seal as intended.

FRAME TYPES AND PROFILES

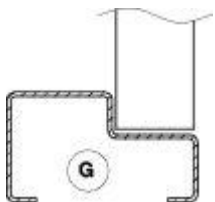
Timber Frame

The timber frame profiles listed below are available for these door sets



Steel Frame

The steel frame profiles listed below are available for these door sets



Steel frames require packing of the frame during installation with fibrous insulation material (e.g. fibreglass, mineral wool or polyester batts).

Standard frames are three-sided only with no sill. Four-sided frames and/or custom sills may be available on request. For more in depth information on frame profiles and sizes, please see our Installation Instructions.

ACOUSTICAL PERFORMANCE GRAPHS

Size of test opening: 1.92 m²
Mass per unit area: 20.4 kg/m²
Temperature: 12.0 °C
Air humidity: %
Source room volume: 62.3 m³
Receiving room volume: 56.0 m³

Frequency f [Hz]	R 1/3 octave [dB]
50	16.2
63	14.7
80	26.7
100	30.6
125	33.7
160	36.9
200	42.1
250	40.8
315	43.2
400	43.8
500	46.9
630	48.8
800	50.3
1,000	50.5
1,250	47.6
1,600	43.5
2,000	44.5
2,500	50.6
3,150	52.8
4,000	59.6
5,000	63.2



Rating according to ISO 717-1

$R_w(C;C_{tr}) = 48 (-2; -4)$ dB

Evaluation based on laboratory measurement results obtained in one-third-octave bands by an engineering method.

$C_{50-3150} = -4$ dB

$C_{50-5000} = -3$ dB

$C_{100-5000} = -1$ dB

$C_{tr,50-3150} = -13$ dB

$C_{tr,50-5000} = -13$ dB

$C_{tr,100-5000} = -4$ dB