

# Pacific PFW60 Fuego-Light Steel Fire Window

Issue date: 6/25/25

Page 1 of 4

## DESCRIPTION

The Pacific Forster FuegoLight -/60/30 is a fixed glazing, steel-framed fire-rated window. It provides 60 minutes of integrity and 30 minutes of insulation.

**For further information on this product, visit:**

<https://www.pacificdoors.co.nz/products/fire/fire-windows/frr-60-minute/pfw60>

## PRODUCT FEATURES:

### Product features:

- 60min fire rating
- Single glazed
- Acoustic rating available
- Suitable for both interior and exterior use
- Compatible with timber stud, steel stud and masonry wall
- Tested to AS/NZS 4284:2008 and NZS 4211:2008
- Comply with NZS 4232.2:1988 and meet NZBC C/AS2

## PRODUCT OPTIONS

The thickness of the window frame is 65 mm with an approximate glazed weight of 78 kg/m<sup>2</sup>.

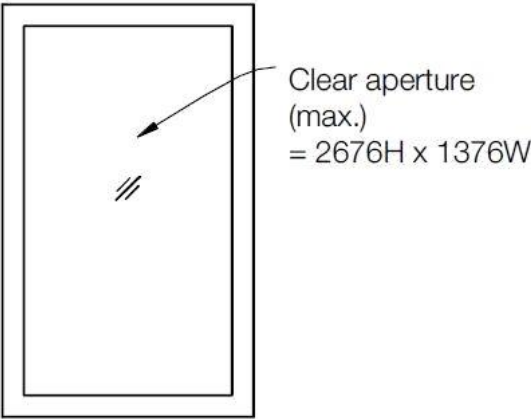
This is a double-glazed window, especially suited to exterior applications where increased thermal insulation is required.

Glazing Type	Maximum Glazed Area	Max Height (mm)	Max Width (mm)	Frame Type		Fire Rating
				Timber	Steel	
Pyrobel 17N	3.68m <sup>2</sup>	2676	1376		✓	-/60/30

### Notes:

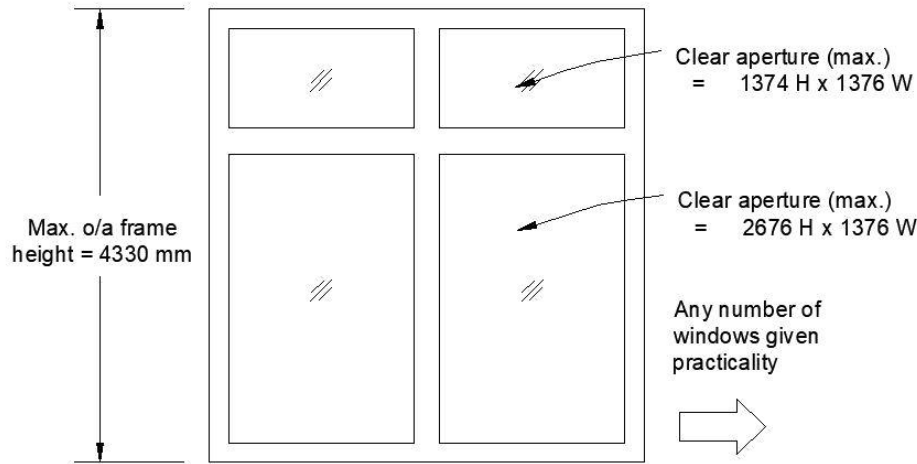
1. Sizes noted above are the clear view.
2. All glazing is Grade A safety glass.

Single Pane

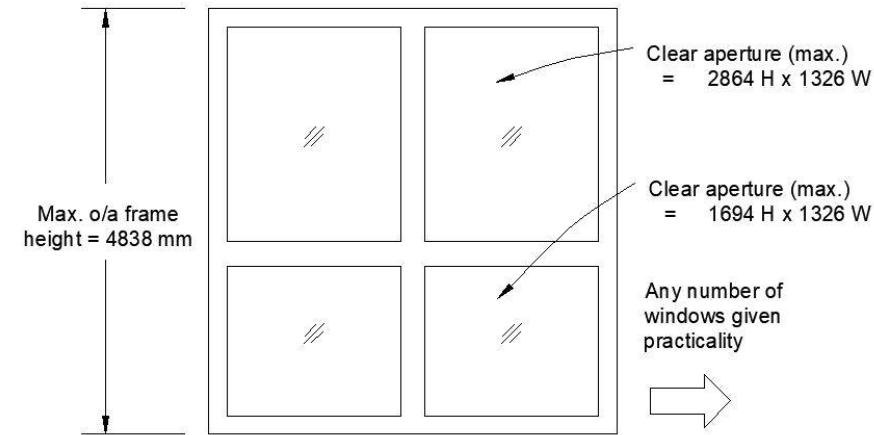


Multi Pane

Option 1:



Option 2:



## Sizing Rules

The maximum allowed clear view is 2676 mm High x 1376 mm Wide. Multiple panes may be joined by transoms/mullions. Maximum allowed total unit height is 4479 mm for interior windows and 4213 mm for exterior windows.

## Wall Types

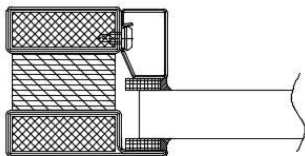
The Pacific Steel Fire Window -/60/30 is suitable for installation in timber or steel stud plasterboard walls and masonry fire-rated walls. Walls to be fire rated to minimum -/60/30 by others.

The standard installation method for steel or timber stud walls is by 12g screws at max. 450 mm centres.

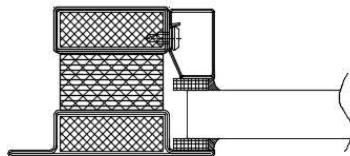
The standard for Masonry installation is M8 Excalibur screwbolts (or similar) at max. 450 mm centres. No fasteners are exposed to weather or attack face.

## Steel frame

The frame is made from 1.5 mm cold-formed steel box sections.



FuegoLight window frame



FuegoLight transom frame

For more in-depth information on frame profiles and sizes, please see our Installation Instructions.

## Finish

Standard preparation for interior use is powder coating.

Standard preparation for exterior use is sandblasting followed by zinc arc spray (15-year weatherability grade) to frame.

Unit can be delivered with a powder coat finish or primed, ready to paint.

## PERFORMANCE

### Thermal Insulation

The glazing used in this window has a thermal insulation rating (R-value) of:

Pyrobel: 0.185 Km<sup>2</sup>/W

Changes to the NZBC H1 "Energy efficiency" will come into effect gradually starting from November 2022, featuring more stringent requirements for the thermal insulation values of all exterior glazed windows and doors. As a result, some of our products may not be suitable for all climate zones or building types. Customers should take care to specify a suitable product for each specific project, and Pacific Doors takes no responsibility for incorrect products being selected. Thermal insulation R-values for all our exterior glazing products are listed on the Pacific Doors website.

## Exterior Situations

The window is tested to AS/NZS 4284:2008 – “Testing of building facades” and complies with the requirements of NZS 4211:2008 – “Specification for performance of windows” up to and including the Extra High Wind Zone.

## **Acoustic Performance**

A certified acoustic rating of STC 39 for interior windows and STC 40 for exterior windows is available for this window type. Please notify PDS if you require acoustic certification for your fire window.