

## Pacific VP120-FH Fire-Rated Floor Hatch

Issue date: 6/25/25

Page 1 of 3

### DESCRIPTION

The Pacific VP120-FH Fire-Rated Floor Hatch consists of one or two proprietary fire-rated non-load-bearing panels resting in a pressed steel frame. The steel frame is fixed to a concrete floor.

The access hatch permits the installation of relatively large plant into the ceiling cavity or the removal of that equipment for maintenance purposes.

**For further information on this product, visit:**

<https://www.pacificdoors.co.nz/products/fire/fire-panels-hatches/frr-120-minute/vp120-fh>

### PRODUCT OPTIONS

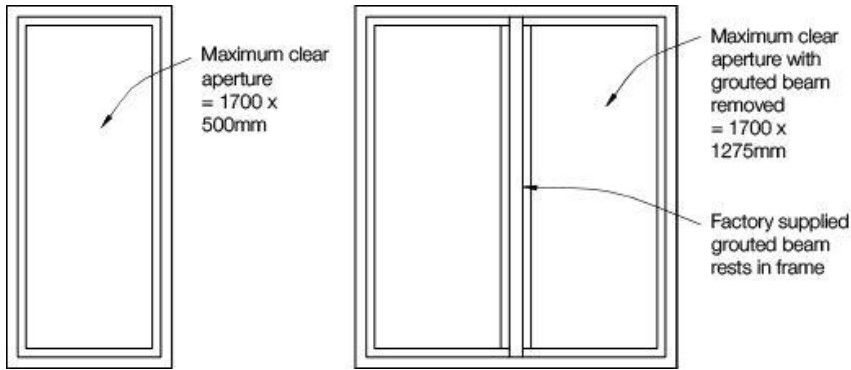
The access hatch permits the installation of relatively large plant into the ceiling cavity or the removal of that equipment for maintenance purposes.

Floor hatches are outside the scope of NZS 4520 and are therefore not labelled.

Configuration	Fire Resistance Rating Stability/Integrity/Insulation	Max Aperture Height (mm)	Max Aperture Width (mm)	Panel Thickness (mm)
Single panel	-/120/60	1700	500	48
Two panel	-/120/60	1700	1275	48

#### Notes:

1. Two hatch panels with a removal mullion between are required to achieve clear apertures greater than 1700 x 500mm. The hatch panel frame must use a 25mm stop.



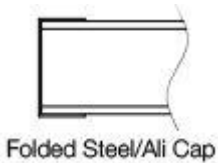
## Product Options

### Leaf Facings

- Ply

### Leaf Edges

The leaf edges listed below are available for this panel.



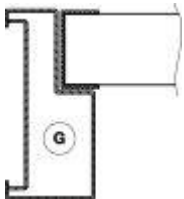
## Frame Types and Profiles

### Timber Frame

The VP120-FH is not available in a timber frame.

### Steel Frame

The steel frame profiles listed below are available for this panel.



## Floor / Ceiling Specifications

Pyropanel VP90-FH Fire Rated Floor Hatch may be installed into a fire rated Gib Board® floor/ceiling system of appropriate FRR provided:

- Maximum live load = 0 kg
- Joist system must be adequate to support the hatch weight at 100kg maximum.
- There are no additional service penetrations in the ceiling system.

## Optional Extras

A reed switch could be fitted to the assembly to monitor closed status.

## Restrictions

Panel *may not be* hinged.